

# LATERAL 213, SOUTHWEST INTERCEPTOR

## WALNUT CREEK 2ND ADDITION

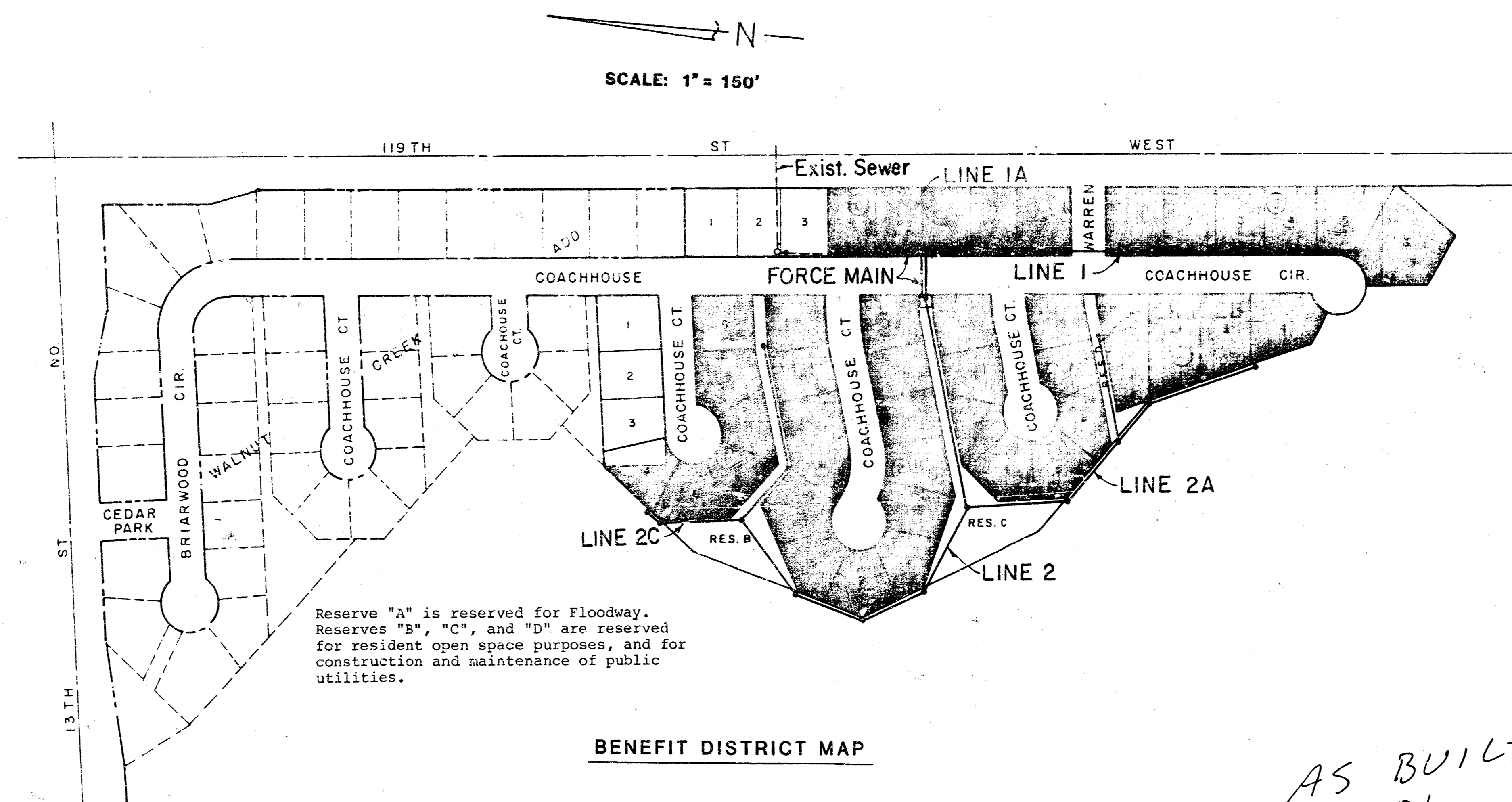
PROJECT NO. 468-76-245-81487-000-000-001

CITY OF WICHITA, KANSAS

MICHAEL E. LINDEBAK CITY ENGINEER

INDEX

1	Title and Benefit District Map
2-5	Plan and Profiles
6	Lift Station Site Plan
7-8	Lift Station Details
9	Plat of Walnut Creek 2nd Add.
10	Precast Manhole Detail

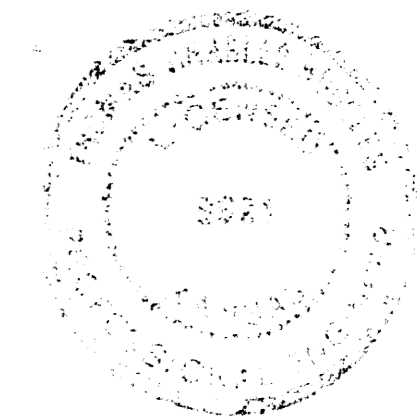


BENEFIT DISTRICT MAP

NOTES:

1. Contractor shall be responsible for preserving property irons. Any irons disturbed as a result of his operations shall be re-established at the contractor's expense. Any such work shall be performed by a licensed surveyor or professional engineer.
2. The contractor shall contact the utilities prior to any excavation to determine the location of existing or future underground utilities in the project area.
3. Construction of this project shall be coordinated with Water Main Extensions, proj. no. 440-76-245-88053-000-000-001, and Street Improvements, proj. no. 472-76-245-81489-000-000-001.
4. Compacted fill to "Existing" grade, as shown on the profiles, is to be placed by "others" prior to issuance of notice to proceed with this project. Any areas where existing grade does not provide sufficient pipe cover, contractor shall fill to a depth of 2.5' minimum over the top of sewer pipe. Such fill shall be subsidiary to L.F. of sewer pipe.

AS BUILT  
RDL  
11-86

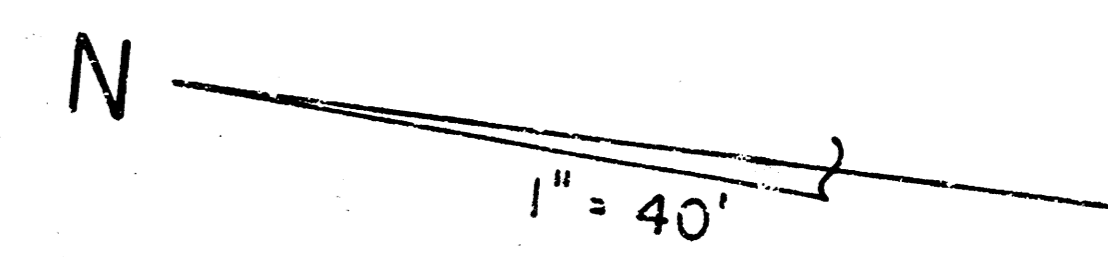
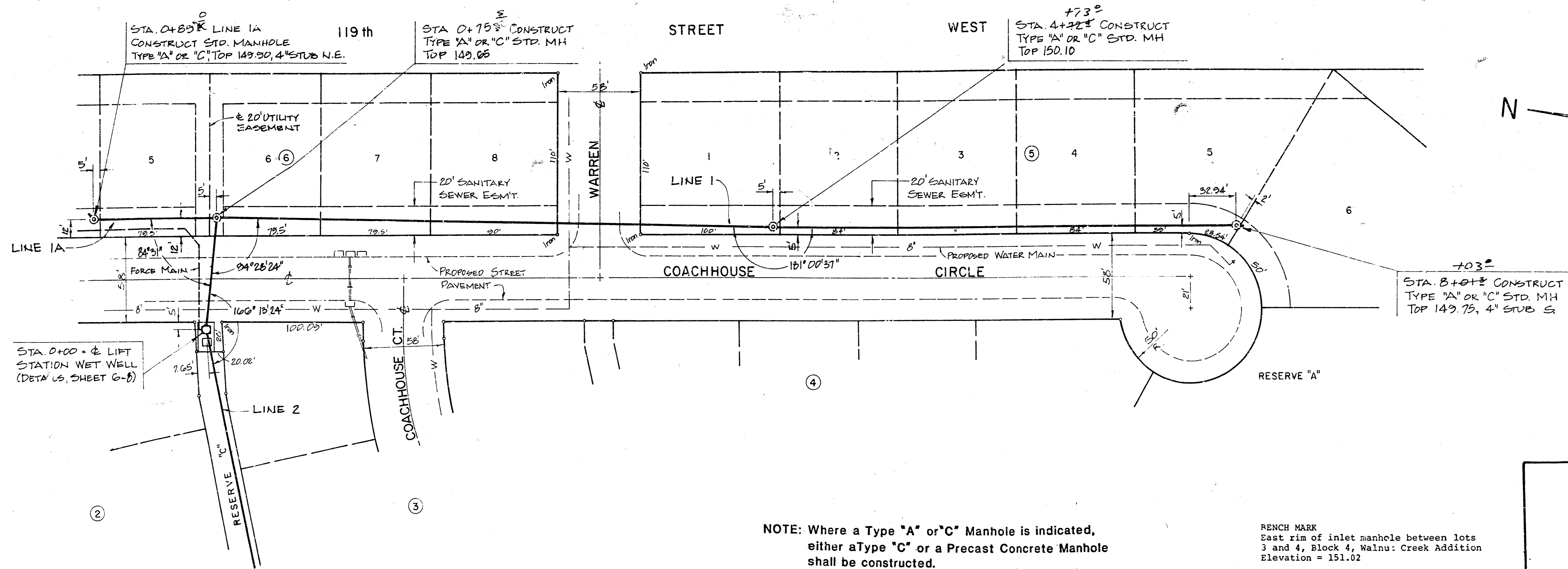


MAY 1986

BAUGHMAN COMPANY, P.A.  
SURVEYING & ENGINEERING  
316/262-7271 • 330 LAURA • WICHITA, KANSAS 67211



FILMED FROM THE BEST AVAILABLE COPY....



**NOTE:** Where a Type "A" or "C" Manhole is indicated, either a Type "C" or a Precast Concrete Manhole shall be constructed.

Area around manhole shall be filled to top of manhole. See detail, sheet 4.

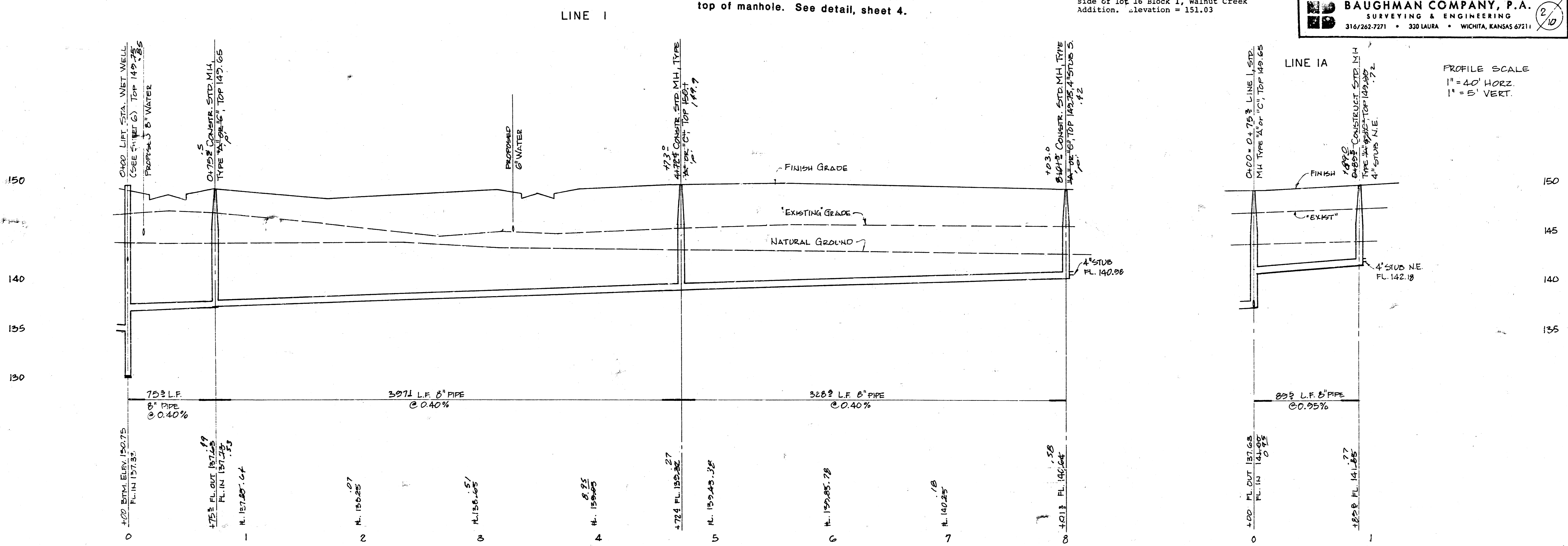
**BENCH MARK**  
East rim of inlet manhole between lots 3 and 4, Block 4, Walnut Creek Addition  
Elevation = 151.02

**BENCH MARK**  
"0" out in top of curb near the south side of lot 16 Block 1, Walnut Creek Addition.  
Elevation = 151.03

**LATERAL 213, S.W.I.**  
WALNUT CREEK 2nd ADDITION  
CITY OF WICHITA, KANSAS

Project number:  
468-76-245-81487-000-000-1

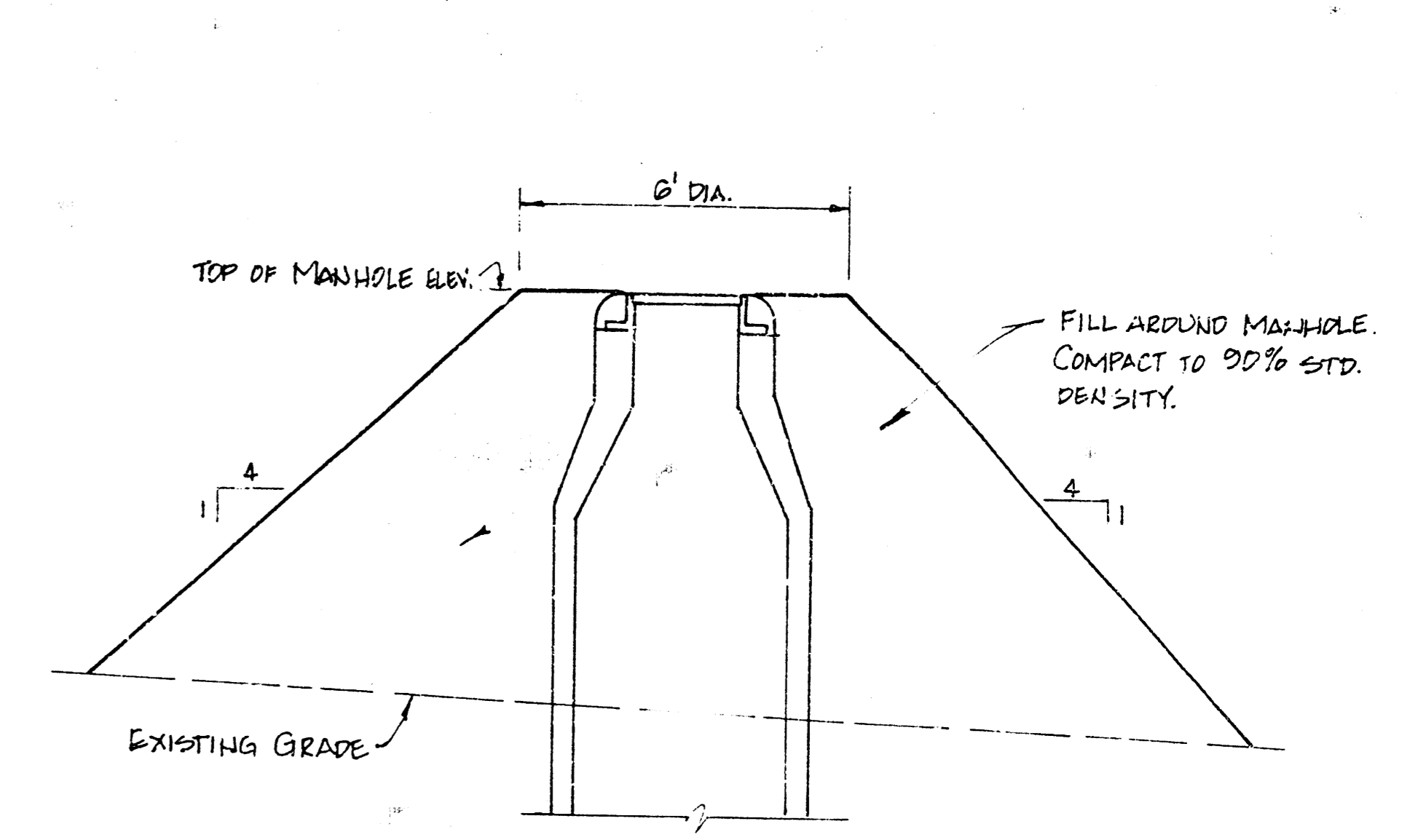
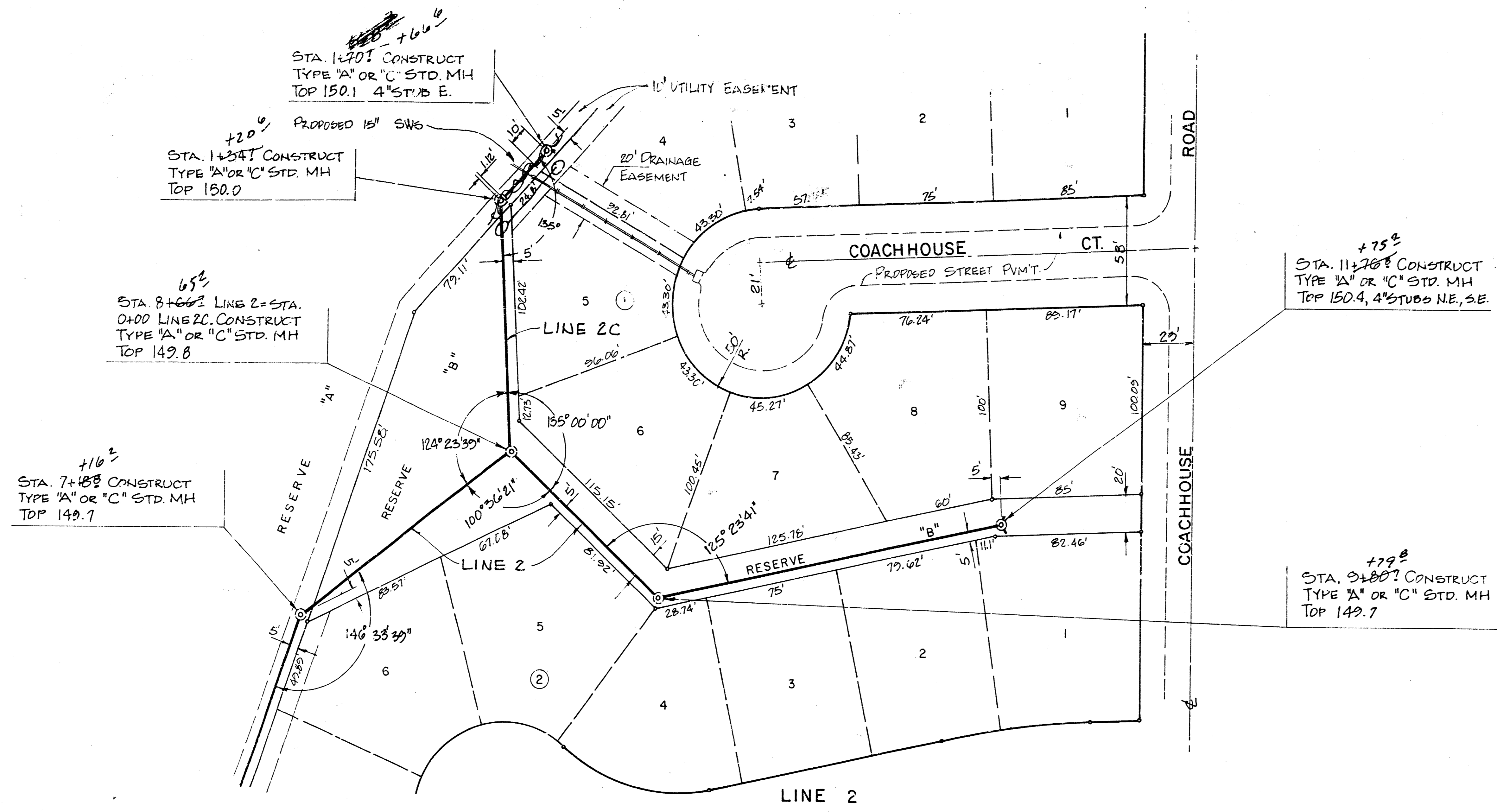
**BAUGHMAN COMPANY, P.A.**  
SURVEYING & ENGINEERING  
316/262-7271 • 330 LAURA • WICHITA, KANSAS 67211



LINES 1 and 1A

**FILMED FROM THE BEST AVAILABLE COPY**

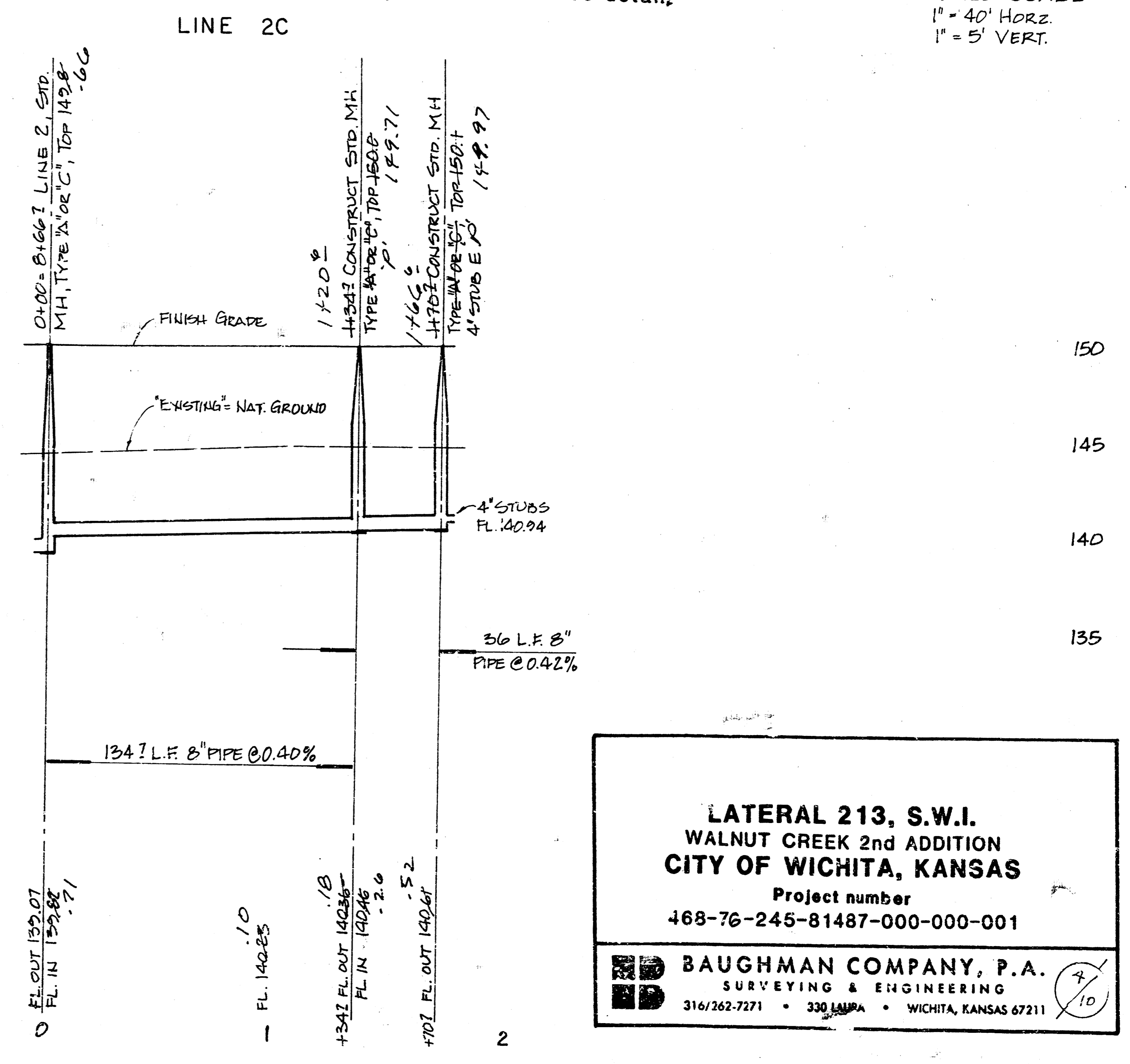
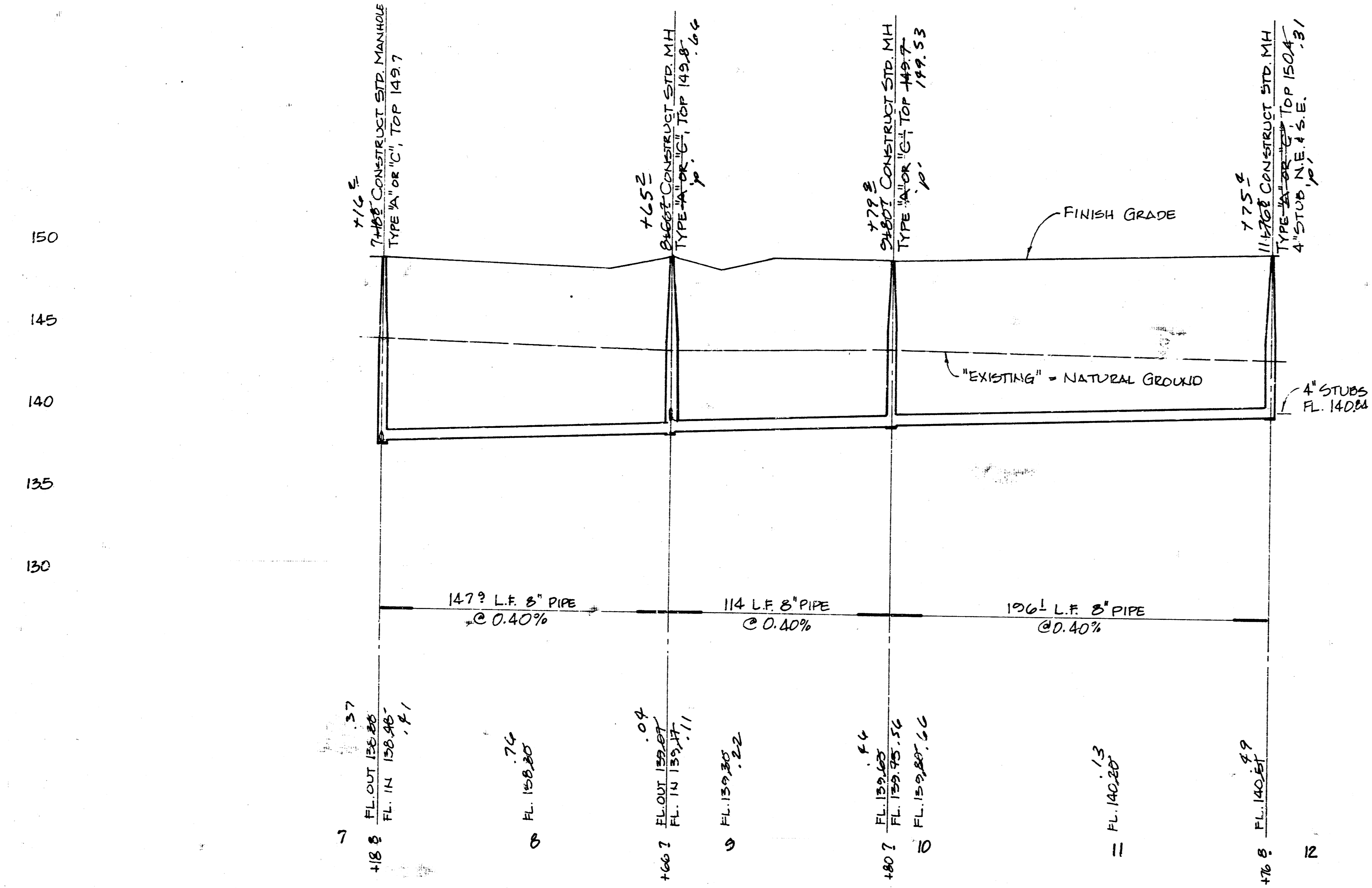




NOTE: Where a Type "A" or "C" Manhole is indicated, either a Type "C" or a Precast Concrete Manhole shall be constructed.

Area around manhole shall be filled to top of manhole. See detail.

PROFILE SCALE  
1" = 40' HORIZ.  
1" = 5' VERT.

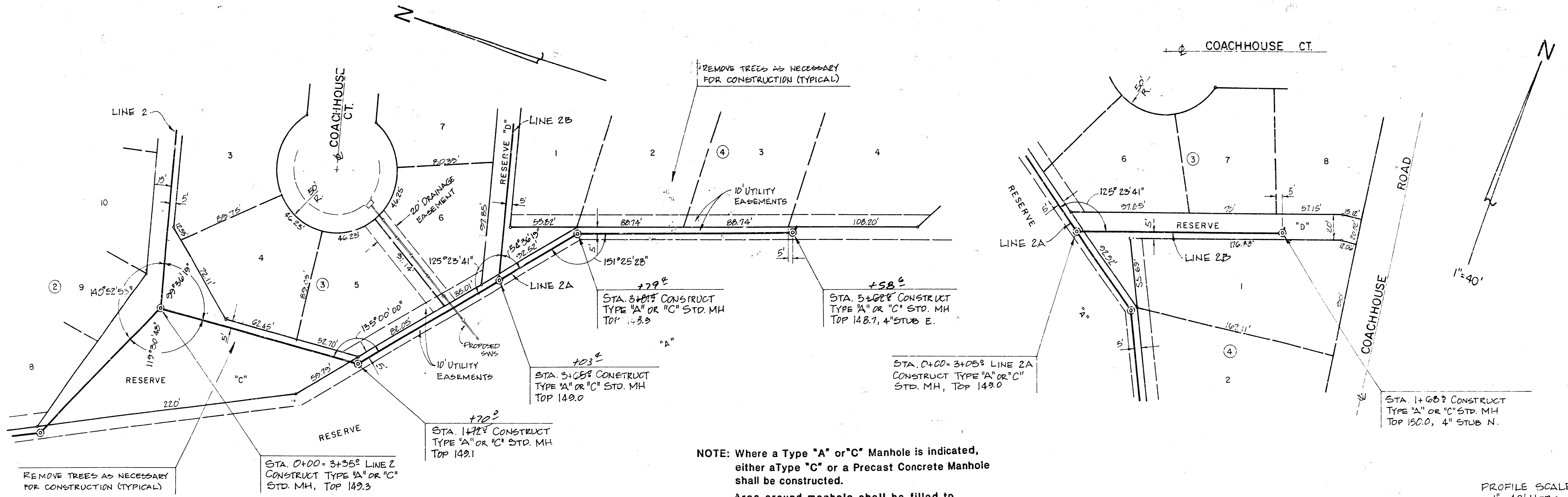


**LATERAL 213, S.W.I.**  
**WALNUT CREEK 2nd ADDITION**  
**CITY OF WICHITA, KANSAS**  
 Project number  
 468-76-245-81487-000-000-001

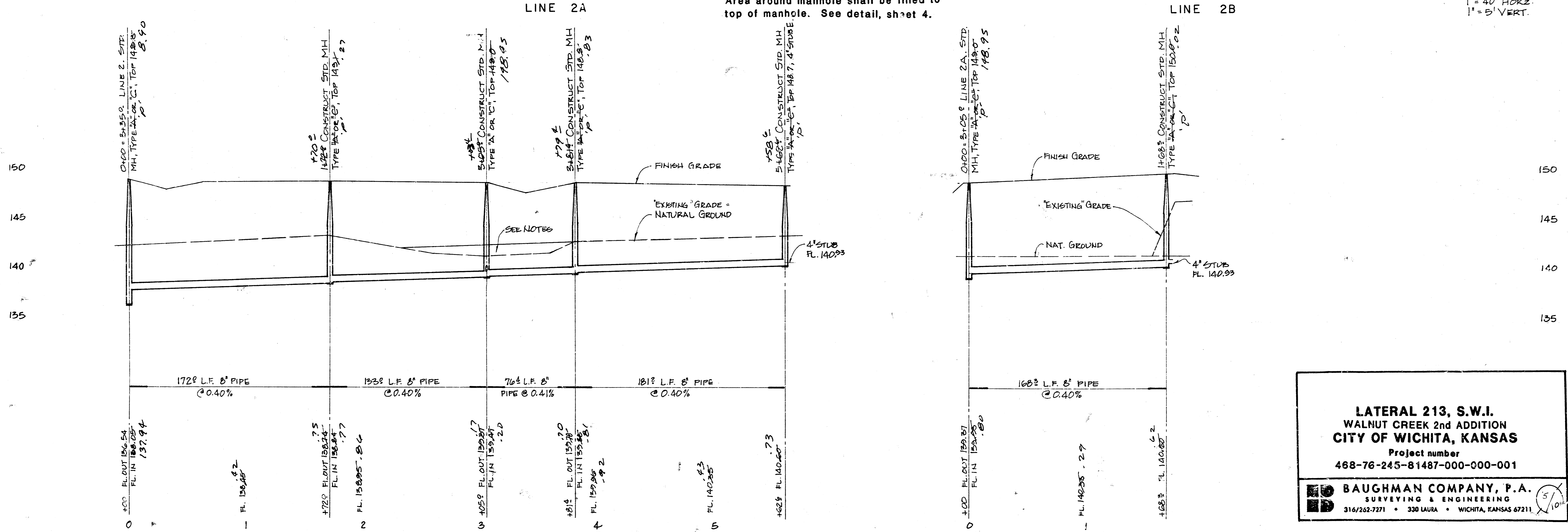
**BAUGHMAN COMPANY, P.A.**  
 SURVEYING & ENGINEERING  
 316/262-7271 • 330 S.W. 10th • WICHITA, KANSAS 67211

LINES 2 and 2C

FILMED FROM THE BEST AVAILABLE COPY



PROFILE SCALE  
 1" = 40' HORIZ.  
 1" = 5' VERT.

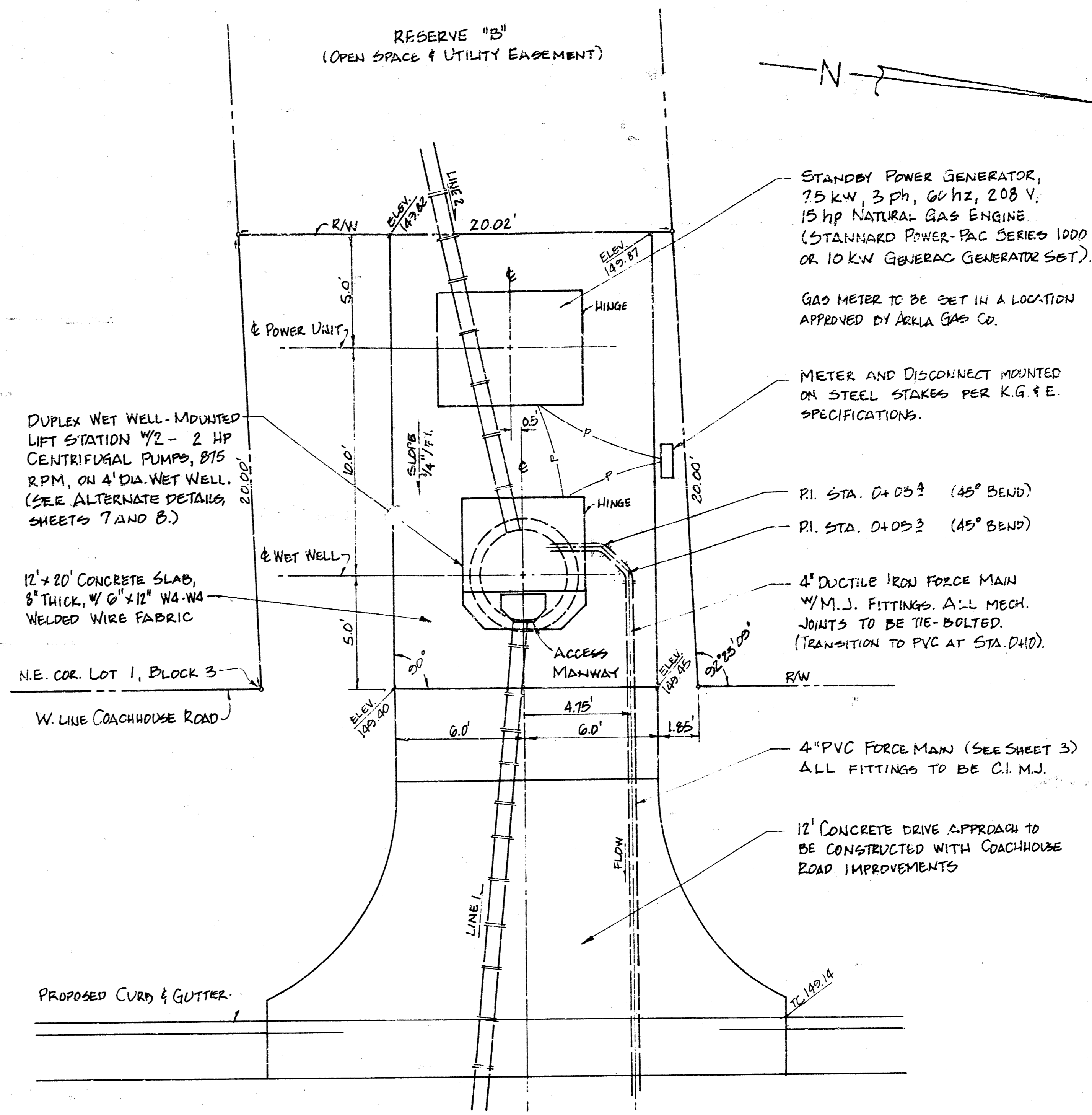
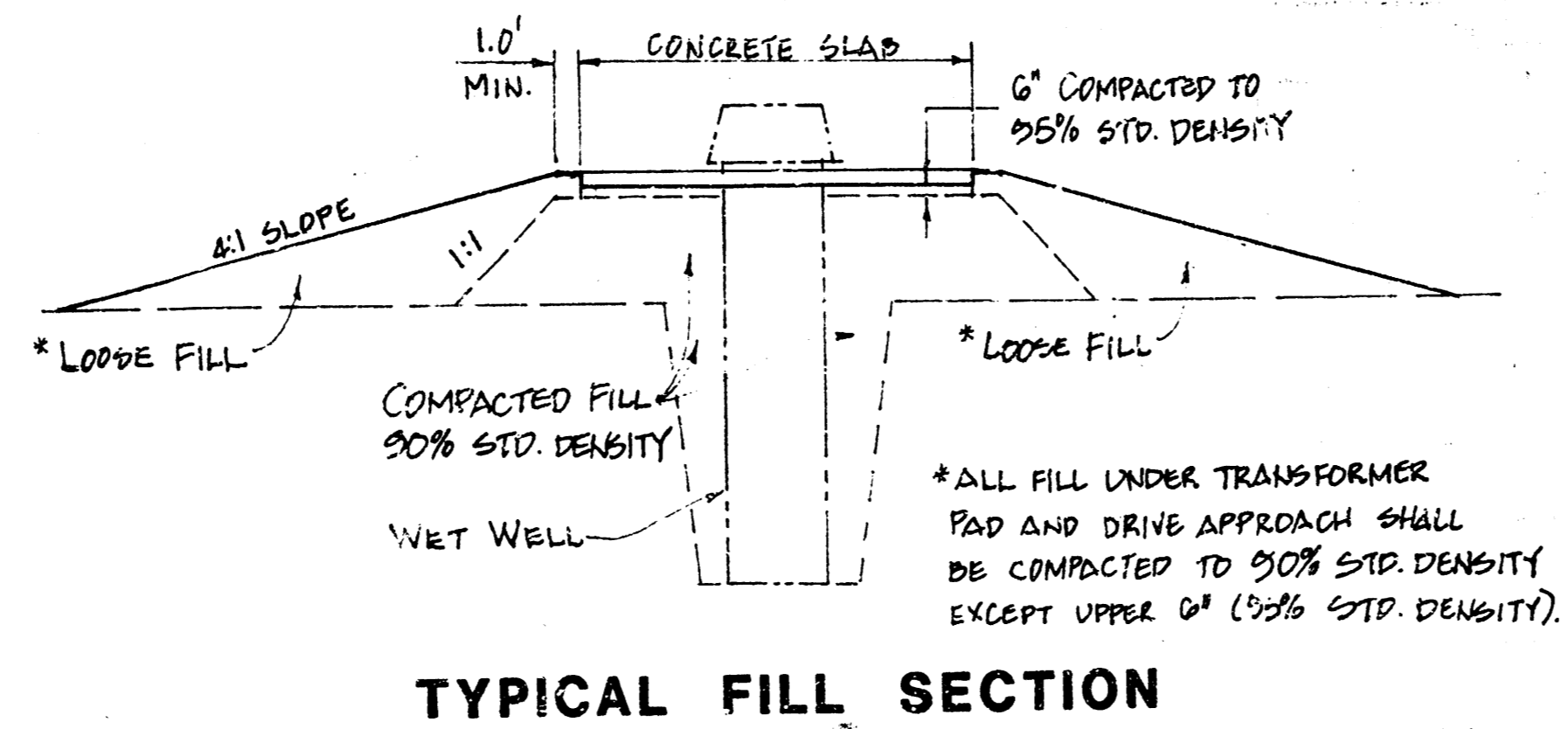


**LATERAL 213, S.W.I.**  
**WALNUT CREEK 2nd ADDITION**  
**CITY OF WICHITA, KANSAS**  
 Project number  
 468-76-245-81487-000-000-001

**BAUGHMAN COMPANY, P.A.**  
 SURVEYING & ENGINEERING  
 316/262-7271 • 330 LAURA • WICHITA, KANSAS 67211

LINES 2A and 2B

FILMED FROM THE BEST AVAILABLE COPY.....



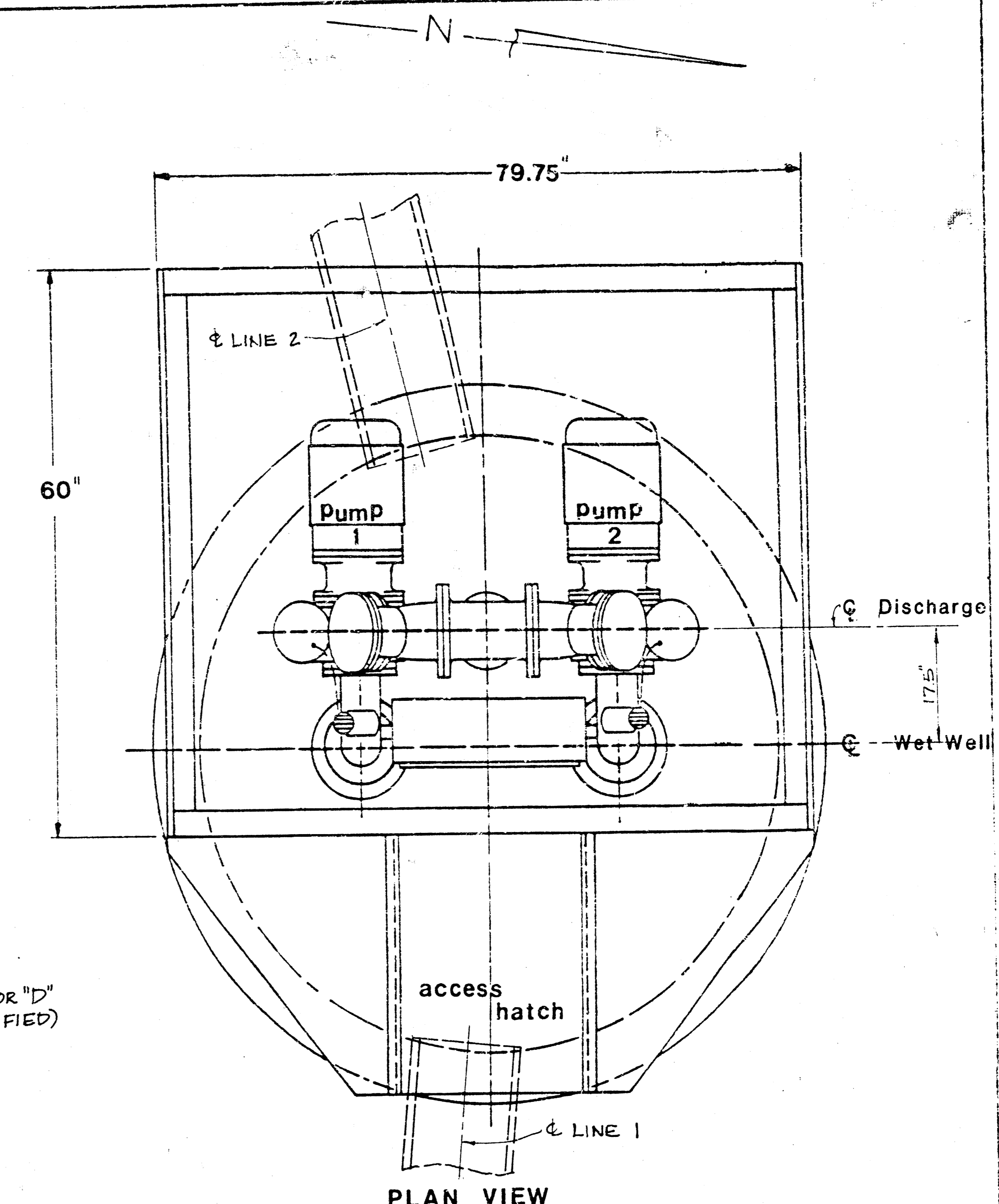
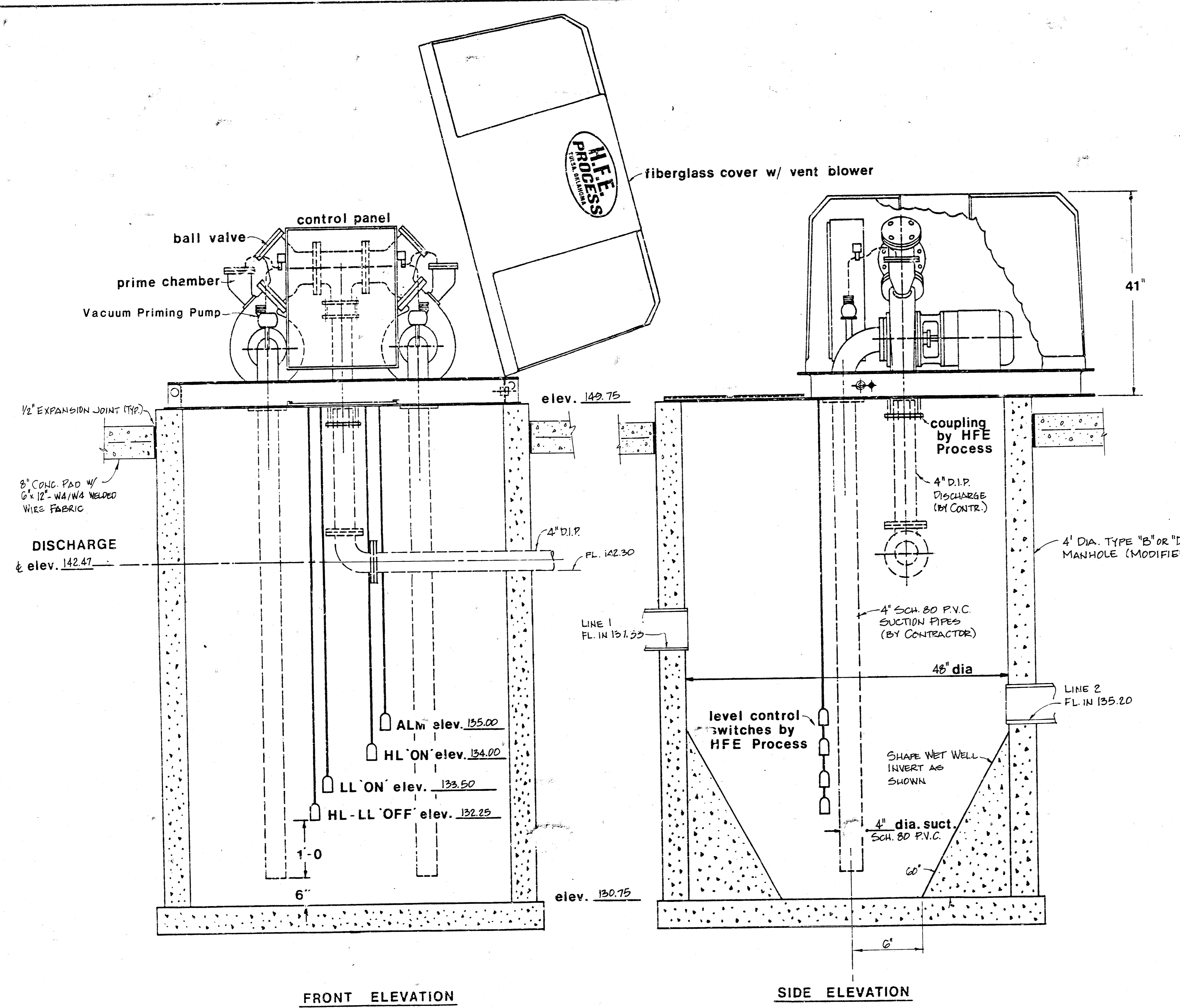
**LIFT STATION SITE PLAN**  
1" = 2'

- NOTES:
1. The lump sum price for furnishing and installing the lift station with standby power and miscellaneous appurtenances complete in place shall include all costs for furnishing and installing the lift station, wet well, and standby power module as indicated on the site plan, complete in place and in operation. Such lump sum bid shall include the cost of constructing and/or installing compacted subgrade, concrete pad, meter setting, disconnect switch, electrical conduit and wiring, electrical power supply, natural gas fuel supply, finished grading, and any other incidentals necessary to complete the work.
  2. Contractor shall install meter setting and disconnect switch in the location indicated on the site plan, and shall construct a concrete pad for K.G.&E. transformer in a location approved by the Engineer. All electric service equipment shall conform to K.G.&E. requirements.
  3. A 1 1/2" conduit shall be installed underground from the lift station to the power unit and from the power unit to the disconnect switch. A 3/4" conduit shall be installed underground from the lift station to the telephone system service location, for connection to alarm system.
  4. A UL listed lightning arrestor shall be installed after the disconnect switch for voltage surge protection of the automatic transfer switch and all secondary wiring.
  5. Concrete drive approach to lift station is to be constructed as part of Coach house Road pavement improvements. Contractor shall fill and compact area under lift station concrete pad to 90% std. density. Area surrounding pad shall be graded to meet existing ground at 4:1 maximum slope. (See Typical Fill Section.)
  6. Contractor shall install or arrange installation of gas meter and service connection to standby power unit in a location approved by the Engineer. Meter setting and service equipment shall conform to Arkla Gas Company requirements.

**LATERAL 213, S.W.I.**  
**WALNUT CREEK 2nd ADDITION**  
**CITY OF WICHITA, KANSAS**  
Project number  
468-76-245-81487-000-001


**BAUGHMAN COMPANY, P.A.**  
SURVEYING & ENGINEERING  
316/262-7271 • 330 MAURA • WICHITA, KANSAS 67211

FILMED FROM THE BEST AVAILABLE COPY.....



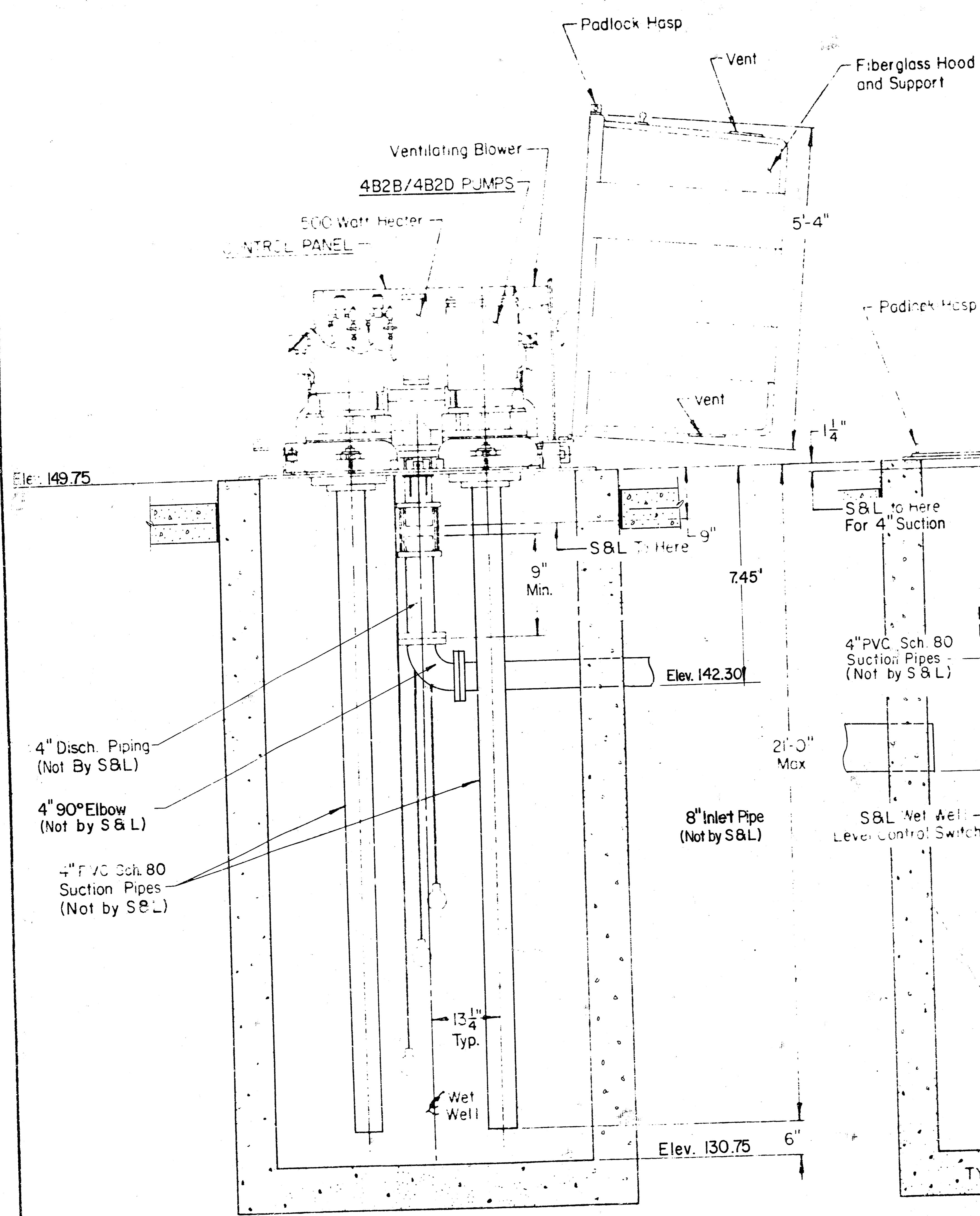
NOTES: 500 watt heater - std.  
250 cfm vent fan - std.  
1.5 & .75" service conn.

NO SCALE

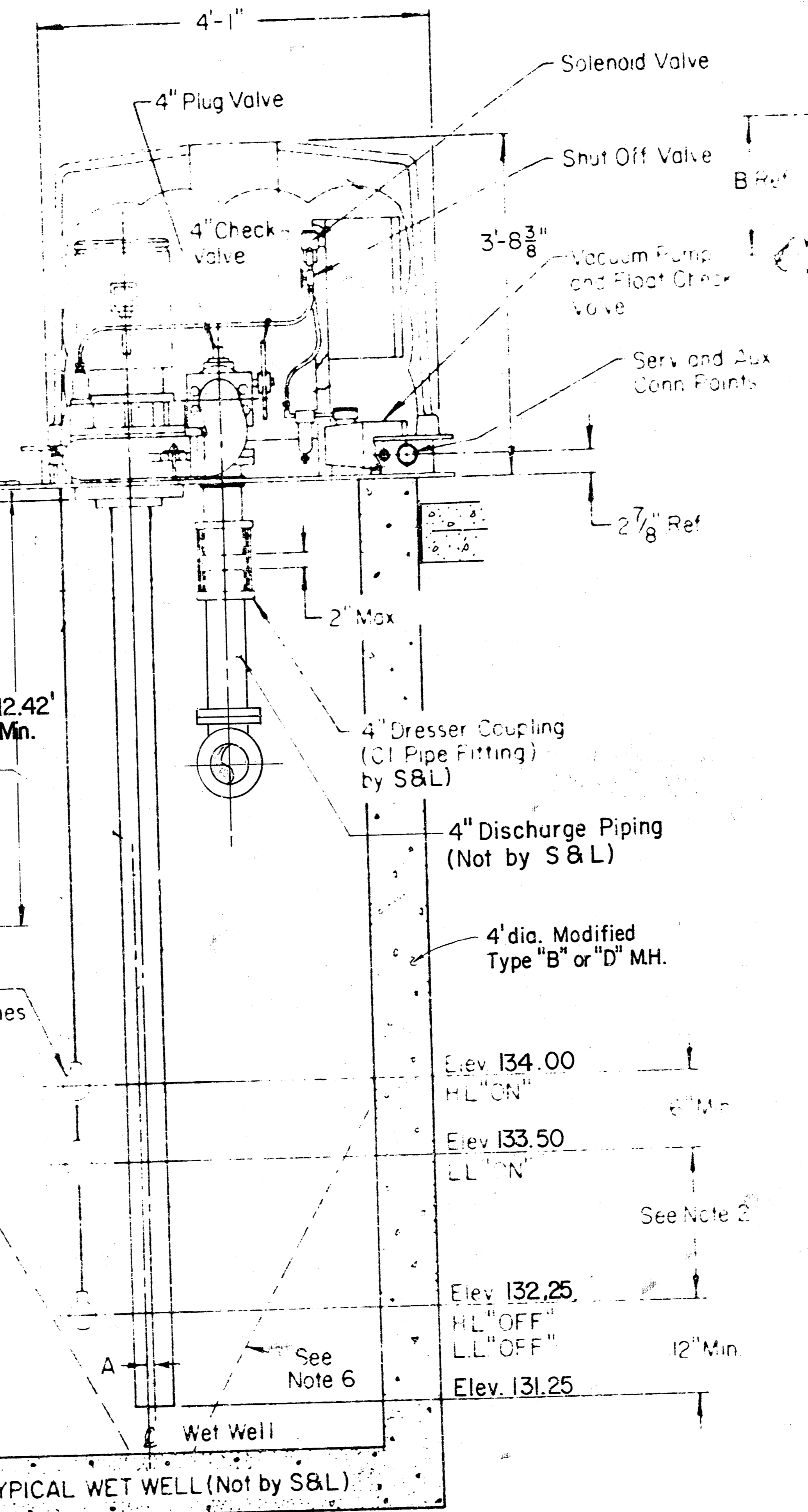
<p>LATERAL 213, S.W.I. WALNUT CREEK 2nd ADDITION CITY OF WICHITA, KANSAS Project number 468-76-245-81487-000-000-001</p>	 <p><b>H.F.E. PROCESS</b> TULSA, OKLAHOMA</p> <p>A HARDISON COMPANY - TULSA</p>
--	--

FILMED FROM THE BEST  
AVAILABLE COPY

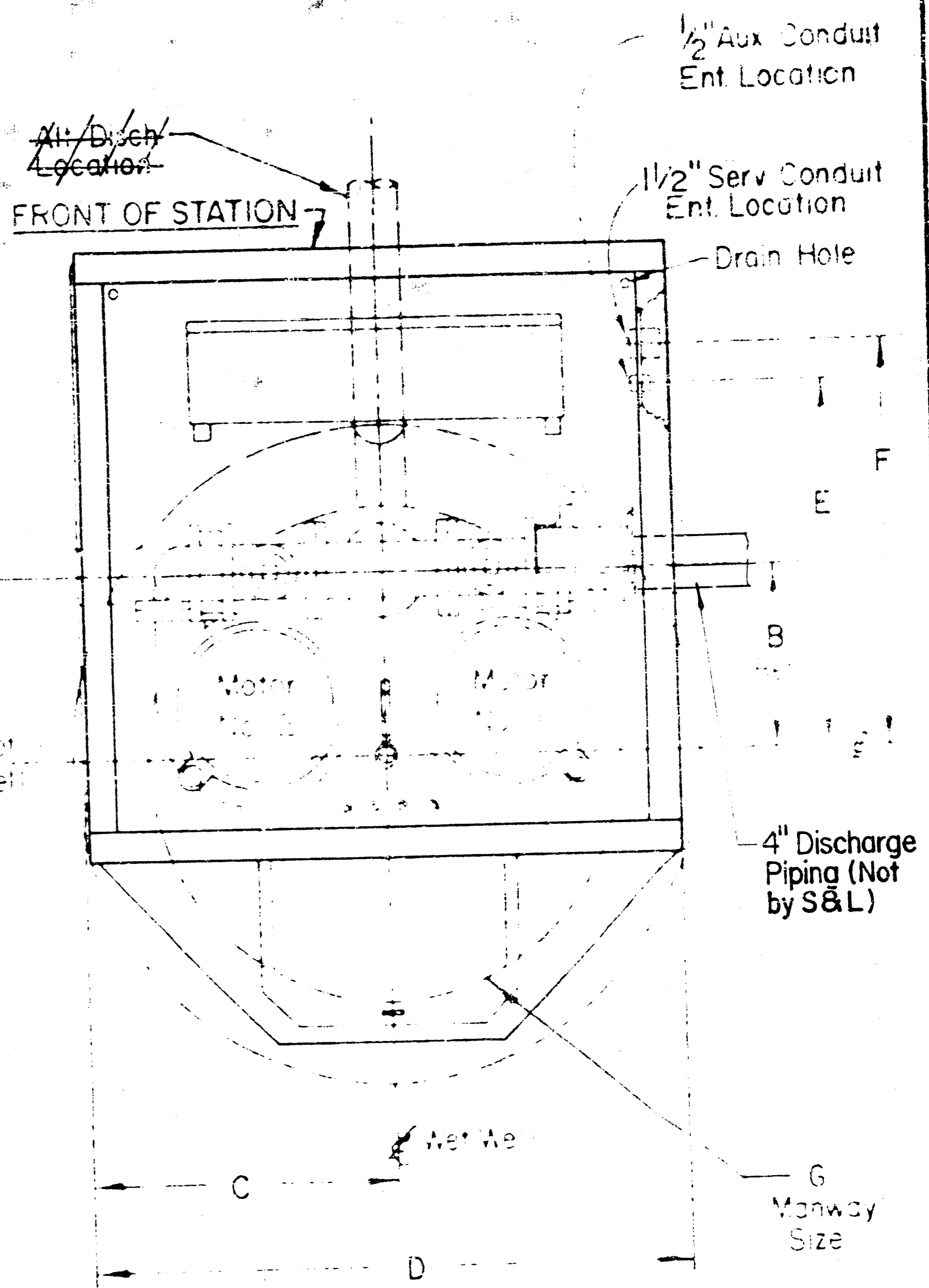
WET WELL DIAMETER	DIM. A	DIM. B	DIM. C	DIM. D	DIM. E	DIM. F	MANWAY G
4'-0"	4"	15 13/16"	33"	66"	27 7/8"	32 3/8"	14" x 24"
5'-0"	8"	19 13/16"	34"	68"	33 3/8"	37 7/8"	24 1/2" x 26"
6'-0"	2"	13 13/16"	40"	80"	27 3/8"	31 7/8"	24 1/2" x 28"



SECTIONAL ELEVATION



CROSS SECTION



PLAN VIEW  
MAN CHAMBER  
Show Lids Cover

- NOTES:
1. Maximum Capacity - 400 G.P.M.
  2. Volume in Gallons Between L.L. "ON" and L.L. "OFF" Should Equal Pumping Rate in G.P.M.
  3. If End of Discharge Line is Below Elevation of Discharge Line at Point of Leaving Wet Well, Consult Factory.
  4. If Discharge Line is Less than 200 Feet in Length a Check Valve May be Required - Consult Factory.
  5. Pump Motors - 20 H.P. Maximum.
  6. Provide 60° Slope in Wet Well - As Required.

Alternate "B"  
Lat. 213, Southwest Interceptor  
Proj. no. 468-76-245-81487-000-000-001

4B2B/4B2D PUMPS		87D196
D. Fisher	2-79	Smith & Loveless, Inc.
M.E.W.	2-79	
C.V.	3-79	
WET WELL MOUNTED PUMP LIFT STA. - MODEL "S"		4" DIA. WELL
4" PIPING		
Eq. 1		
87D196		

FILMED FROM THE BEST AVAILABLE COPY.....

# WALNUT CREEK 2ND ADDITION

WICHITA, SEDGWICK COUNTY, KANSAS

691-1M

M-2 7-28

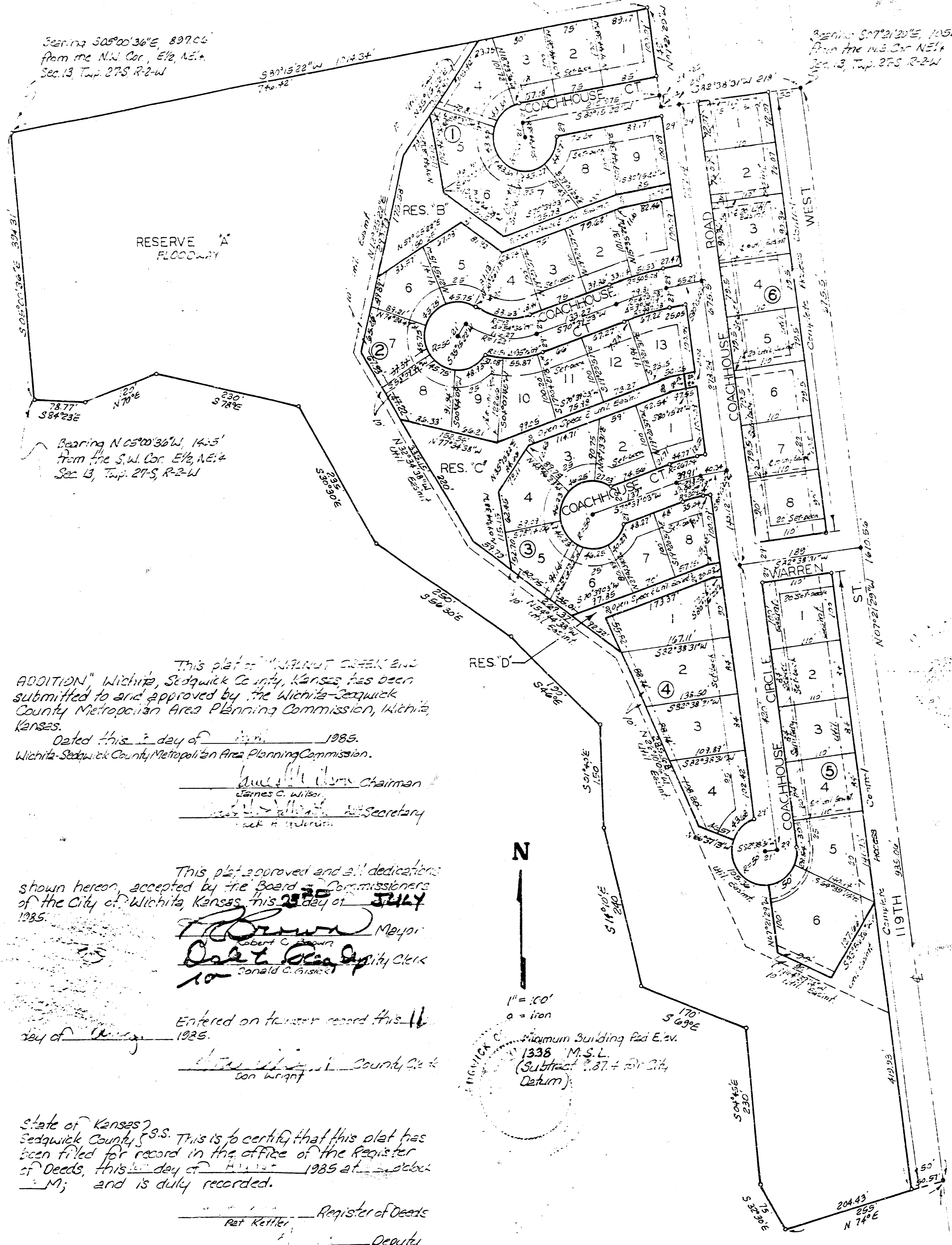
State of Kansas, ss. We, Baughman Company, P.A., Surveyors in Sedgewick County, and State as narrow certain that we have surveyed and platted "WALNUT CREEK 2ND ADDITION" within Sedgewick County, Kansas and that the accompanying map is a true and correct exhibit of the property surveyed and platted as a part of land of the City of Wichita of Sec. 13, Twp. 27S, R. 2W of the 1st P.M. Sedgewick County, Kansas. Commencing at the NE corner of said NE 1/4, thence S 107° 21' 23" E along the east line of said NE 1/4, 1058.82 feet to a point of beginning; thence S 52° 55' 31" W 23.3 feet; thence N 07° 12' 25" W 143.2 feet; thence S 80° 15' 22" W along a curve with the north line of the E 1/2 of said NE 1/4, 107.54 feet to the west line of the E 1/2 of said NE 1/4; thence S 25° 20' 52" E along the west line of the E 1/2 of said NE 1/4, 384.31 feet to a point of beginning of the SW corner of the E 1/2 of said NE 1/4; thence S 34° 28' E 73.77 feet; thence N 70° 15' 10" W 225.3 feet; thence S 78° 25' 23" W 230 feet; thence S 30° 30' E 235 feet; thence S 52° 30' E, 280 feet; thence S 46° 15' 12" W 190 feet; thence S 04° 40' E, 150 feet; thence S 14° 05' 24" W 245 feet; thence S 69° 15' 17" W 170 feet; thence S 04° 15' 23" W 230 feet; thence S 32° 30' E, 150 feet; thence N 74° 15' 25" W to a point on the east line of said NE 1/4, thence N 09° 21' 23" W along the east line of said NE 1/4, 1410.96 feet to the place of beginning.

7-9-85  
Date  
Baughman Company, P.A.  
William L. Kerber Surveyor  
William L. Kerber

Know all men by these presents that we, the undersigned, have caused the land described in the surveyors certificate to be platted into lots, blocks, streets and reserves to be known as "WALNUT CREEK 2ND ADDITION", Wichita, Sedgewick County, Kansas. The utility easements are hereby granted as indicated for the construction and maintenance of all public utilities. The drainage easements are hereby granted for drainage purposes. The streets are hereby dedicated to and for the use of the public. All egress and ingress rights of access to or from 119th St. West over and across the east line of Reserve "A" and Lots 1, 2, 3, 4, 5 and 6, Block 5 and Lots 1, 2, 3, 4, 5, 6, 7 and 8, Block 6 are hereby granted to the City of Wichita, Kansas. Reserve "A" is hereby reserved for floodway and shall be the responsibility of the owners of the lots in Walnut Creek 2nd Addition, until such time as the governing authority elects to assume the responsibility for maintenance and improvement of the drainage. No building shall be constructed on or within said floodway; nor shall any fill, change of grade, creation of channel or other work be carried on without the permission of the appropriate governing body. With such permission of said appropriate body, additional improvements and/or activities may be permitted within said floodway, such as landscaping, water features, paths, pedestrian and maintenance, creek crossings and recreational facilities. Reserves "B", "C" and "D" are hereby reserved for resident open space purposes, such as landscaping and paths and are hereby granted for the construction and maintenance of all public utilities. Reserves "A", "B", "C" and "D" will be owned by the Walnut Creek Home Owners Association. No building shall be constructed below a minimum pad elevation of 1338 Mean Sea Level.

Barbed Wire Associates, a Kansas General Partnership  
Leonard E. Marotte, Partner  
Larry E. Bortenberg, Partner

State of Kansas, ss. The foregoing instrument was acknowledged before me, this 9th day of July, 1985, by Robert C. Foster, Partner and Larry E. Bortenberg, Partner, on behalf of Barbed Wire Associates, a Kansas General Partnership.



This plat of "WALNUT CREEK 2ND ADDITION" Wichita, Sedgewick County, Kansas, has been submitted to and approved by the Wichita-Sedgewick County Metropolitan Area Planning Commission, Wichita, Kansas.  
Dated this 9th day of July, 1985.  
Wichita-Sedgewick County Metropolitan Area Planning Commission.

James C. Wilbur Chairman  
Robert C. Foster Secretary

This plat approved and all dedications shown hereon, accepted by the Board of Commissioners of the City of Wichita, Kansas, this 23rd day of JULY, 1985.  
Robert C. Foster Mayor  
Donald C. Givens City Clerk  
Entered on transfer record this 11th day of August, 1985.  
William L. Kerber County Clerk  
William L. Kerber

State of Kansas, ss. This is to certify that this plat has been filed for record in the office of the Register of Deeds, this 9th day of July, 1985 at 10:00 a.m.; and is duly recorded.

Pat Ketter Register of Deeds  
Ed Repp Deputy

**LATERAL 213, S.W.I.**  
WALNUT CREEK 2nd ADDITION  
CITY OF WICHITA, KANSAS  
Project number  
468-76-245-81487-000-001

**BAUGHMAN COMPANY, P.A.**  
SURVEYING & ENGINEERING  
316/262-7271 • 330 LAURA • WICHITA, KANSAS 67211

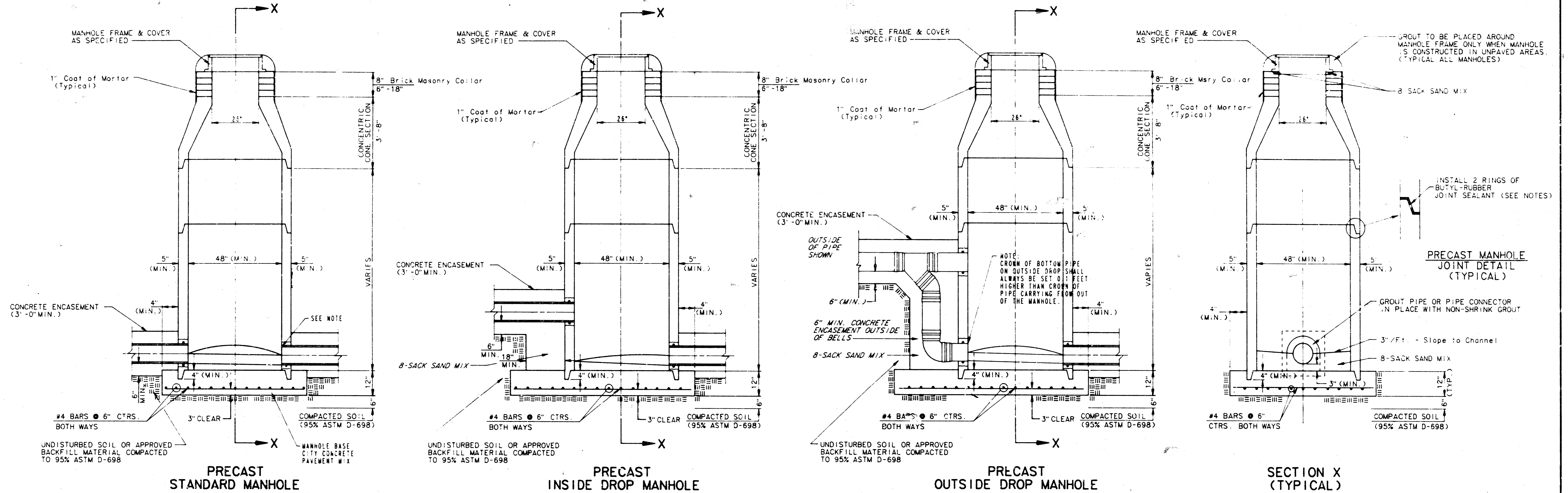
FILMED FROM THE BEST AVAILABLE COPY

# SEWER APPURTENANCES DETAILS

## ADOPTED AS STANDARD DESIGN

### BY

## CITY OF WICHITA



**PRECAST  
STANDARD MANHOLE**

**PRECAST  
INSIDE DROP MANHOLE**

**PRECAST  
OUTSIDE DROP MANHOLE**

**SECTION X  
(TYPICAL)**

**GENERAL NOTES**  
PRECAST MANHOLE NOTES

1. ALL PRECAST CONCRETE MANHOLE SECTIONS SHALL CONFORM TO THE LATEST REVISION OF A.S.T.M. C478 AS MODIFIED BY THE SPECIFICATIONS.
2. NON-SHRINK GROUT SHALL BE NON-METALLIC TYPE.
3. APPROVED FLEXIBLE WATERSTOP GASKETS SHALL BE INSTALLED TO JOIN THE SEWER TO THE MANHOLE WALL WHEN A.B.S. COMPOSITE PIPE OR P.V.C. PIPE IS USED. FOR OTHER TYPES OF PIPE THE SEWER SHALL BE GROUDED IN PLACE WITH NON-SHRINK GROUT. THE SEWER PIPE SHALL BE SUPPORTED WITH CONCRETE ENCASEMENT A MINIMUM OF 3 FEET FROM THE MANHOLE WALL AND TO THE FIRST JOINT FOR V.C.P. SUCH THAT THE JOINT REMAINS FLEXIBLE.
4. ALL INSIDE SURFACES OF THE CONCRETE MANHOLE WHICH WOULD BE EXPOSED TO SEWER GAS SHALL BE COATED WITH 2 COATS TRENCO SERIES 66 HI-BUILD EPOXYLINE, DRY THICKNESS OF 8 MILS (MIN.).
5. EXTERIOR MANHOLE WALLS SHALL BE COATED WITH 1 COAT MOBILARMA 633 BITUMINOUS COATING.
6. JOINT SEALING COMPOUND SHALL BE KENT SEAL NO. 2 OR APPROVED EQUAL.
7. PRECAST MANHOLES SHALL BE SET AT LEAST 4 INCHES INTO THE MANHOLE BASE.
8. TOP OF MANHOLE FLOOR SLAB SHALL BE AT LEAST 3 INCHES BELOW THE FLOW LINE OF THE OUTLET PIPE TO INSURE SUFFICIENT MINIMUM THICKNESS OF SHAPED INVERT.
9. LIFTING HOLES SHALL BE FILLED WITH NON-SHRINK GROUT AND THE INTERIOR SURFACE COATED AS SPECIFIED.
10. MORTAR USED IN MASONRY CONSTRUCTION SHALL CONTAIN 8 BAGS OF CEMENT PER CUBIC YARD. CONCRETE USED IN MANHOLE BASES SHALL CONFORM TO THE REQUIREMENTS OF CONCRETE FOR CONCRETE PAVEMENT CONSTRUCTION AS SPECIFIED IN THE CITY STANDARD PAVING SPECIFICATIONS USING CITY CONCRETE PAVEMENT MIX WITHOUT AIR ENTRAINING ADMIXTURE. MORTAR SHALL BE PLACED AROUND THE MANHOLE RING AS SHOWN ON THE DRAWINGS WHEN MANHOLES ARE CONSTRUCTED IN UNPAVED AREAS. MANHOLES CONSTRUCTED WHERE PIPE SIZES ARE SMALLER THAN 24" SHALL HAVE AN INSIDE DIAMETER OF 4". MANHOLES CONSTRUCTED WHERE PIPE SIZES ARE 24" OR LARGER SHALL HAVE AN INSIDE DIAMETER OF 5". COMPLETED MANHOLE SHALL BE WITHOUT LEAKS AND WATER TIGHT.
11. REINFORCING STEEL SHALL BE INSTALLED IN THE MANHOLE BASES AND SHALL CONSIST OF NO. 4 BARS PLACED ON 6" CENTERS IN BOTH DIRECTIONS. THE MANHOLE BASE REINFORCEMENT SHALL BE PLACED AT LEAST 3" ABOVE THE BOTTOM OF THE MANHOLE BASE. ALL COSTS FOR FURNISHING AND INSTALLING REINFORCING STEEL SHALL BE INCLUDED IN THE UNIT PRICE BID FOR THE MANHOLE.
12. OPENINGS SHALL BE CUT INTO THE MANHOLE WALL WHEN OUTSIDE DROPS ARE CONSTRUCTED ON EXISTING MANHOLES. SUCH OPENINGS CUT INTO EXISTING MANHOLES SHALL BE AS SMALL AS PRACTICAL TO FACILITATE INSTALLING AND GROUDED THE NEW PIPE IN PLACE. WATERSTOP GASKETS SHALL BE USED WITH P.V.C. AND A.B.S. COMPOSITE PIPE. THE NEW PIPE SHALL BE GROUDED INTO THE OPENING USING AN APPROVED NON-SHRINK GROUT FOR THE FULL MANHOLE WALL THICKNESS. THE EXTERIOR OF THE COMPLETED CONNECTION SHALL BE SEALED WITH AN APPROVED BITUMINOUS COATING SUCH THAT THE CONNECTION WILL BE WATER TIGHT. FLOOR OF MANHOLE SHALL BE MODIFIED TO FORM NEW FLOW CHANNEL FOR THE NEW CONNECTION AS INDICATED BY THE DRAWING. THIS WORK, INCLUDING MODIFICATION OF MANHOLE FLOOR, SHALL BE PAID FOR AT THE UNIT PRICE BID FOR OUTSIDE DROP STACK CONSTRUCTED ON EXISTING MANHOLE.
13. THE FLOORS OF ALL MANHOLES SHALL BE SHAPED WITH FLOW CHANNELS SUCH THAT THE MANHOLES WILL BE SELF-CLEANING AND FREE OF AREAS WHERE SOLIDS COULD BE DEPOSITED AS SEWAGE FLOWS THROUGH THE MANHOLE FROM ALL INLET PIPES TO THE OUTLET PIPE. FLOW CHANNELS SHALL BE FORMED TO MATCH THE BOTTOM HALVES OF THE INFLOWING PIPES AND THE OUTFLOWING PIPE AS SHOWN BY THE DRAWINGS EXCEPT FOR INSIDE DROP MANHOLES. FLOW CHANNELS FOR INSIDE DROP MANHOLES SHALL BE CONSTRUCTED AS INDICATED BY THE DRAWING. MANHOLE FLOORS SHALL HAVE SLOPES OF 3 INCHES PER FOOT IN THE AREAS OUTSIDE OF THE FLOW CHANNELS SLOPED TOWARD THE FLOW CHANNELS. PIPES LAID THROUGH MANHOLES SHALL HAVE THE TOP HALF REMOVED TO REAT LINES OF THE FULL INSIDE DIAMETER OF THE MANHOLE. MANHOLE FLOORS SHALL THEN BE SHAPED AROUND THE BOTTOM HALF OF THE PIPE WHICH FORMS THE FLOW CHANNEL.
14. PIPES INSTALLED WITHIN THE EXCAVATION MADE FOR THE MANHOLE SHALL BE CRADLED WITH CONCRETE TO THE LIMITS OF THE MANHOLE EXCAVATION. WHEN CLAY PIPE IS USED, THE CRADLE SHALL EXTEND TO THE FIRST JOINT OUTSIDE THE MANHOLE. THE CRADLE SHALL BE TERMINATED AT THE CLAY PIPE JOINT IN A MANNER WHICH WILL MAINTAIN THE FLEXIBILITY OF THE JOINT. COST OF CRADLE WITHIN MANHOLE EXCAVATION OR TO CLAY PIPE JOINTS ADJACENT TO MANHOLE SHALL BE INCLUDED IN THE UNIT PRICE BID FOR THE MANHOLE.
15. MANHOLE COVER CASTINGS AND MANHOLE FRAME CASTINGS SHALL CONFORM TO THE REQUIREMENTS AS INDICATED IN THE STANDARD SPECIFICATIONS AND AS SHOWN IN THE STANDARD DETAIL DRAWING.
16. THE VERTICAL DROP IN INSIDE DROP MANHOLES SHALL NOT EXCEED 4' FOR INFLOWING PIPES SIZED 12" OR SMALLER AND 2' FOR INFLOWING PIPES LARGER THAN 12". THE CROWNS OF INFLOWING PIPES SHALL NEVER BE SET LOWER THAN THE CROWN OF THE OUTFLOWING PIPE.
17. STANDARD MANHOLES AND STANDARD INSIDE DROP MANHOLES SHALL BE BID AS STANDARD MANHOLES FOR THE TYPE AND DIAMETER INDICATED. OUTSIDE DROP MANHOLES SHALL BE BID AS STANDARD OUTSIDE DROP MANHOLES FOR THE TYPE AND DIAMETER INDICATED. ALL MANHOLE DIAMETERS WILL BE 4' UNLESS INDICATED OTHERWISE.
18. A BRICK MASONRY COLLAR SHALL BE INSTALLED BETWEEN THE CAST IRON FRAME AND THE CONCENTRIC CONE. THE COLLAR WILL HAVE 8" WALLS AND A VERTICAL HEIGHT OF 6" MINIMUM AND 18" MAXIMUM. A 1" COAT OF MORTAR WILL BE PLASTERED ON THE OUTSIDE OF THE COLLAR.

**LATERAL 213, S.W.I.**  
**WALNUT CREEK 2nd ADDITION**  
**CITY OF WICHITA, KANSAS**  
Project number  
**468-72-245-81487-000-001**

**BAUGHMAN COMPANY, P.A.**  
SURVEYING & ENGINEERING  
316/262-7271 • 330 LAURA • WICHITA, KANSAS 67211

**FILMED FROM THE BEST  
AVAILABLE COPY....**