

# LATERAL 233 S.W.I.

TO SERVE

## THE NETT PARK ADDITION

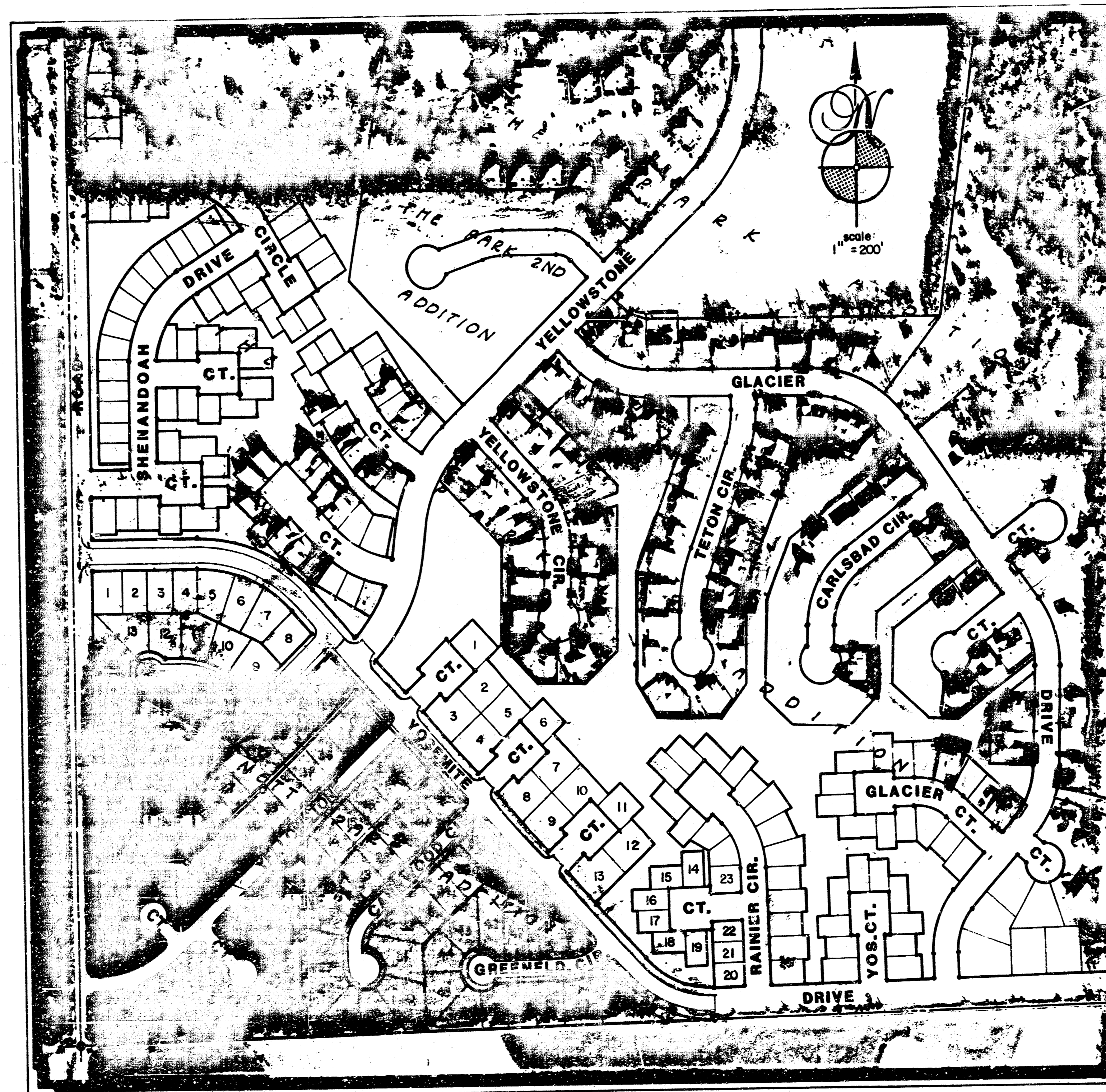
LOTS 22 THRU 47, BLOCK A

PROJECT NUMBER

468-76-245-81644-000-000-001

THE CITY of WICHITA, KANSAS

MICHAEL E. LINDEBAK  
CITY ENGINEER



### INDEX OF SHEETS

Title Sheet	1
Plan & Profile; Line 1 & Line 2	2
Plan & Profile; Line 1	3
Vertical Riser Detail	4

### BENCHMARKS

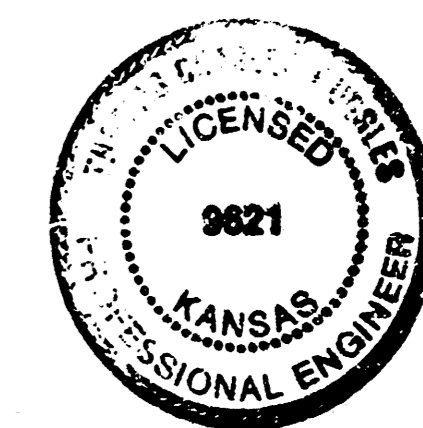
Bench Mark 1 City of Wichita Disc, Maize Rd. and 27th St. South, 25' east and 4' south of Quarter Sec. Corner. Elev. 145.64 City Datum

Bench Mark 2 12" Cut, Top of Curb North end of Existing Northwest Curb Return @ Yosemite Dr. and Yellowstone. Elev. 139.98 City Datum

### GENERAL NOTES

- Underground utility service lines and overhead utility pole lines are to be adjusted as necessary by others prior to construction unless the plans specifically call for their adjustment by the Contractor or unless the plans specifically identify a utility to be adjusted by its owner during construction. Existing utilities and their location, as shown on the plans, represent the best information obtainable for design. The Contractor will be required to work around existing utilities within the right-of-way which do not conflict with proposed construction.
- The Contractor shall be responsible for preserving property irons. The Contractor will be required to re-establish any property irons which are damaged or destroyed by his construction operations. Such irons shall be re-established by a licensed land surveyor in accordance with state laws.

*Built per plan 12-88 ZDL*



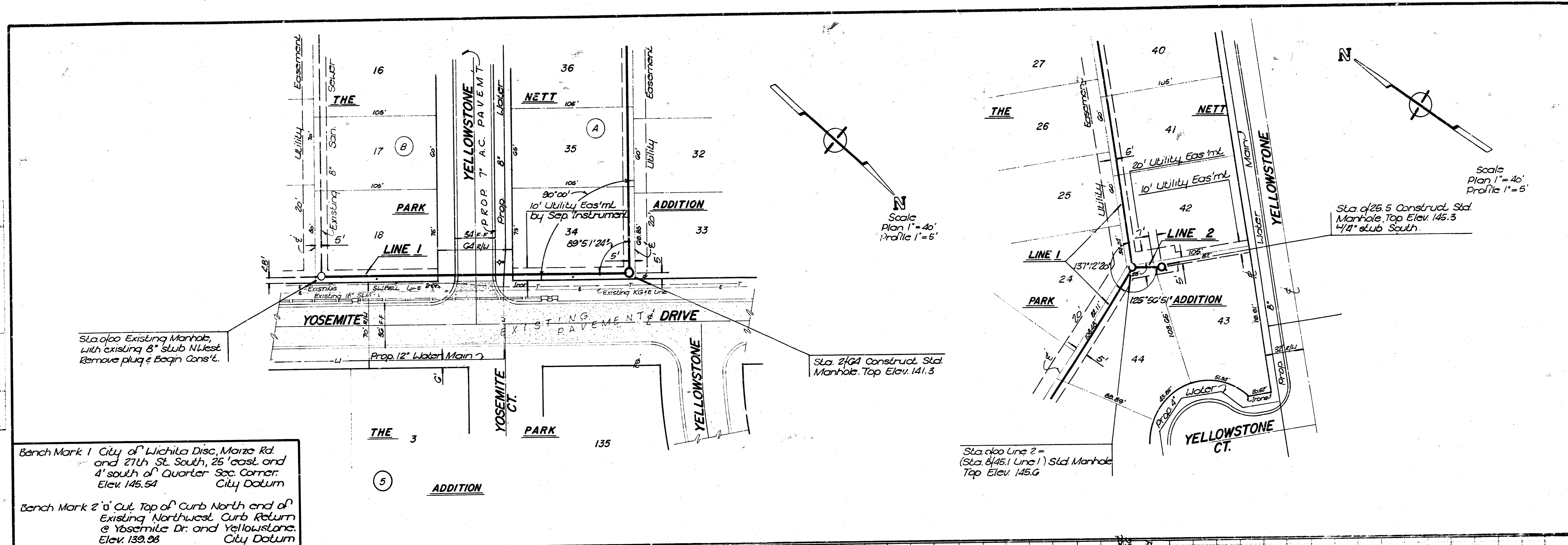
JUNE 24, 1988

TITLE SHEET

BAUGHMAN COMPANY, P.A.  
SURVEYING & ENGINEERING  
316262-7271 • 315 ELLIS • WICHITA, KANSAS 67211

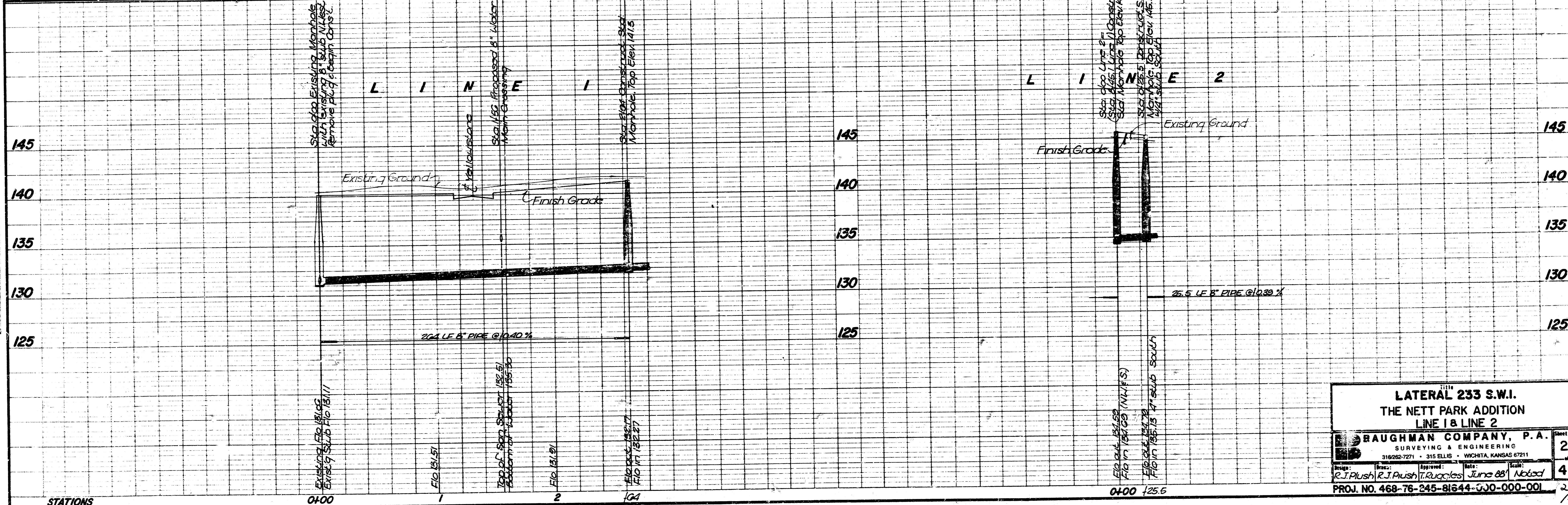
Drawn: R.J. Plush	Checked: T. Ruggles	Date: June 88	Scale: 1" = 200'
-------------------	---------------------	---------------	------------------

FILMED FROM THE BEST AVAILABLE COPY



Bench Mark 1 City of Wichita Disc. Maize Rd. and 27th St. South, 25' east, and 4' south of Quarter Sec. Corner. Elev. 145.54 City Datum

Bench Mark 2 6" Cut. Top of Curb North end of Existing Northwest Curb Return @ Yosemite Dr. and Yellowstone. Elev. 139.93 City Datum



**LATERAL 233 S.W.I.**  
**THE NETT PARK ADDITION**  
**LINE 1 & LINE 2**

**BAUGHMAN COMPANY, P.A.**  
 SURVEYING & ENGINEERING  
 316282-7271 • 316 ELLIS • WICHITA, KANSAS 67211

Scale: 1"=40' (Plan), 1"=5' (Profile)  
 Date: June 88  
 Project No. 468-76-245-81644-GJO-000-001

FILMED FROM THE BEST AVAILABLE COPY



