

# Lateral 234, S.W. Interceptor

to serve

## THE NETT PARK ADDITION

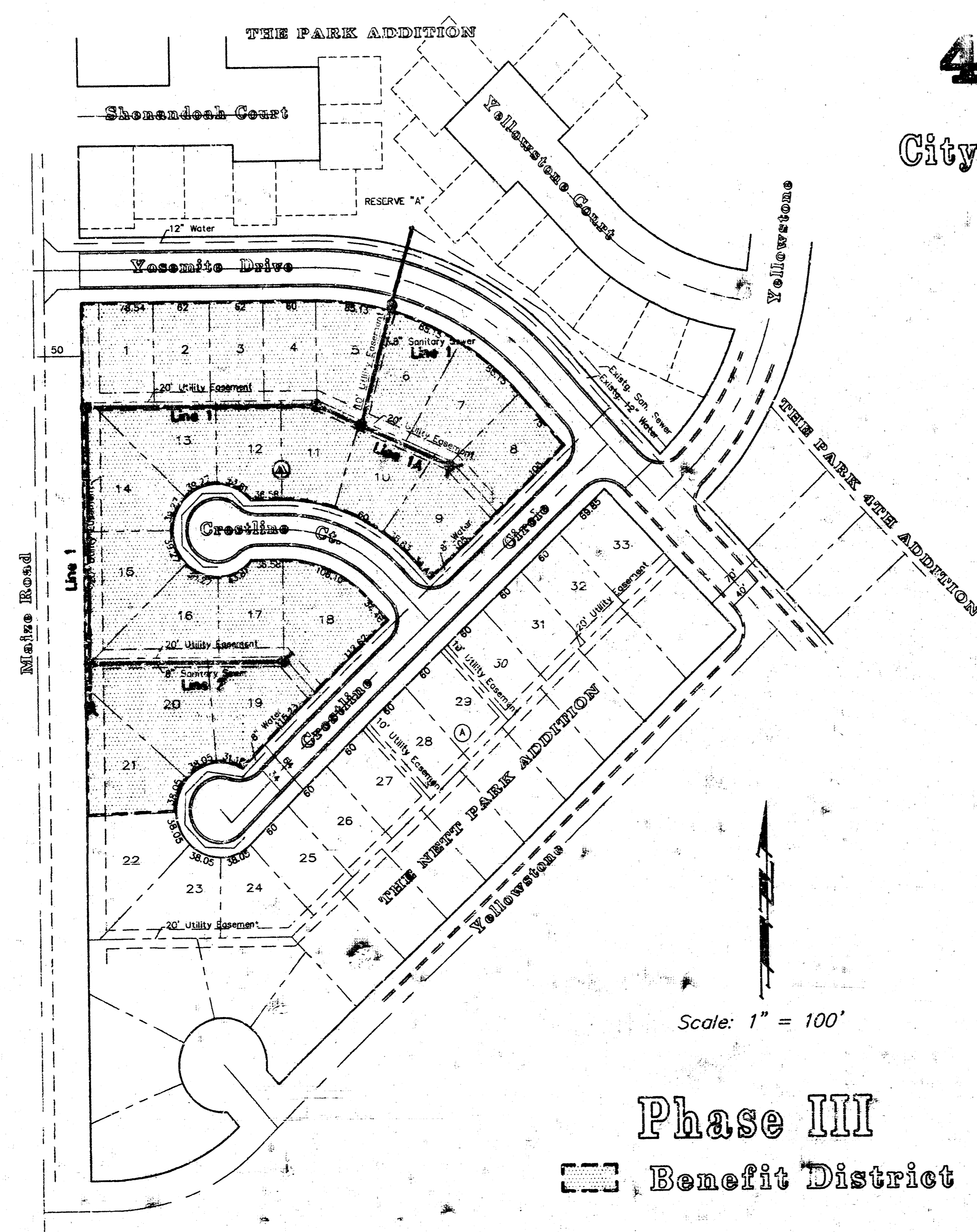
Lots 1 - 21 inclusive, Block A

Project No.

**468 76 245 81645 000 000 001**

City of Wichita, Kansas - Michael E. Lindebak, City Engineer

Index Code: **740894**



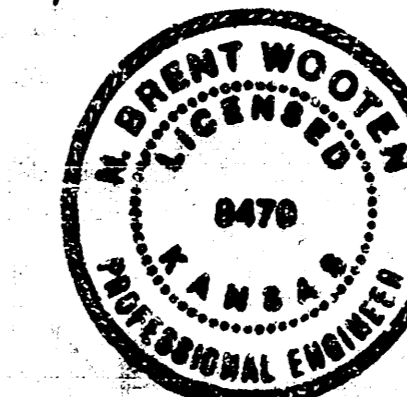
### General Notes

- Underground utility service lines and overhead utility pole lines are to be adjusted as necessary by others prior to construction unless the plans specifically call for their adjustment by the Contractor or unless the plans specifically identify a utility to be adjusted by its owner during construction. Existing utilities and their location, as shown on the plans, represent the best information obtainable for design. The Contractor will be required to work around existing utilities within the right-of-way which do not conflict with proposed construction.
- The Contractor shall notify pipeline companies at least 24 hours in advance of any work being performed across and/or adjacent to pipelines.
- The Contractor shall give all property owners and/or tenants of developed property abutting the construction of this project a minimum of ten (10) days advance notice prior to start of construction.
- The Contractor shall be responsible for preserving property irons. The Contractor will be required to re-establish any property irons which are damaged or destroyed by his construction operations. Such irons shall be re-established by a licensed land surveyor in accordance with state laws.
- Contractor shall grade the sanitary sewer alignment to the profile and elevation shown on the plans. All cost for grading shall be subsidiary to the project.
- The contractor shall co-ordinate construction of the sanitary sewer with that of the water line for this same area.
- All excess excavation material shall be disposed of on sites approved by the engineer. The contractor shall contact Gaylan Nett, 942-0446, for permission to dispose of excavation within The Nett Park.

### Index of Sheets

TITLE SHEET	1
PLAN/PROFILE - LINE 1	2 - 4
PLAN/PROFILE - LINE 1 & 1A	3
PLAN/PROFILE - LINE 2	5
EASEMENT GRADING PLAN	6
MANHOLE DETAIL SHEET	7
PLAT COPY	8

*Booked  
per plan  
RDL*

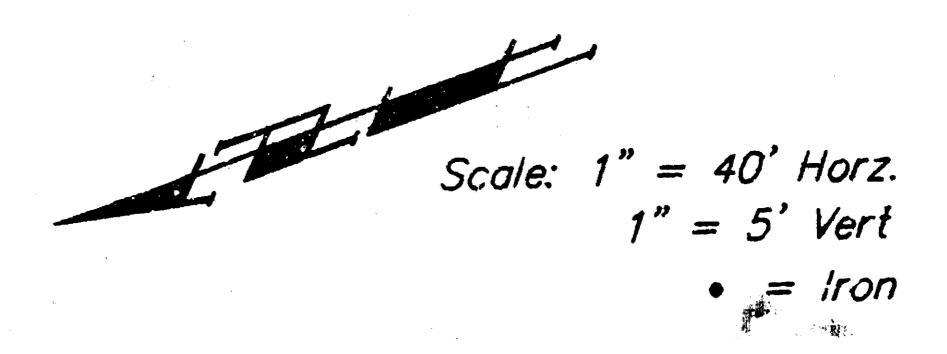
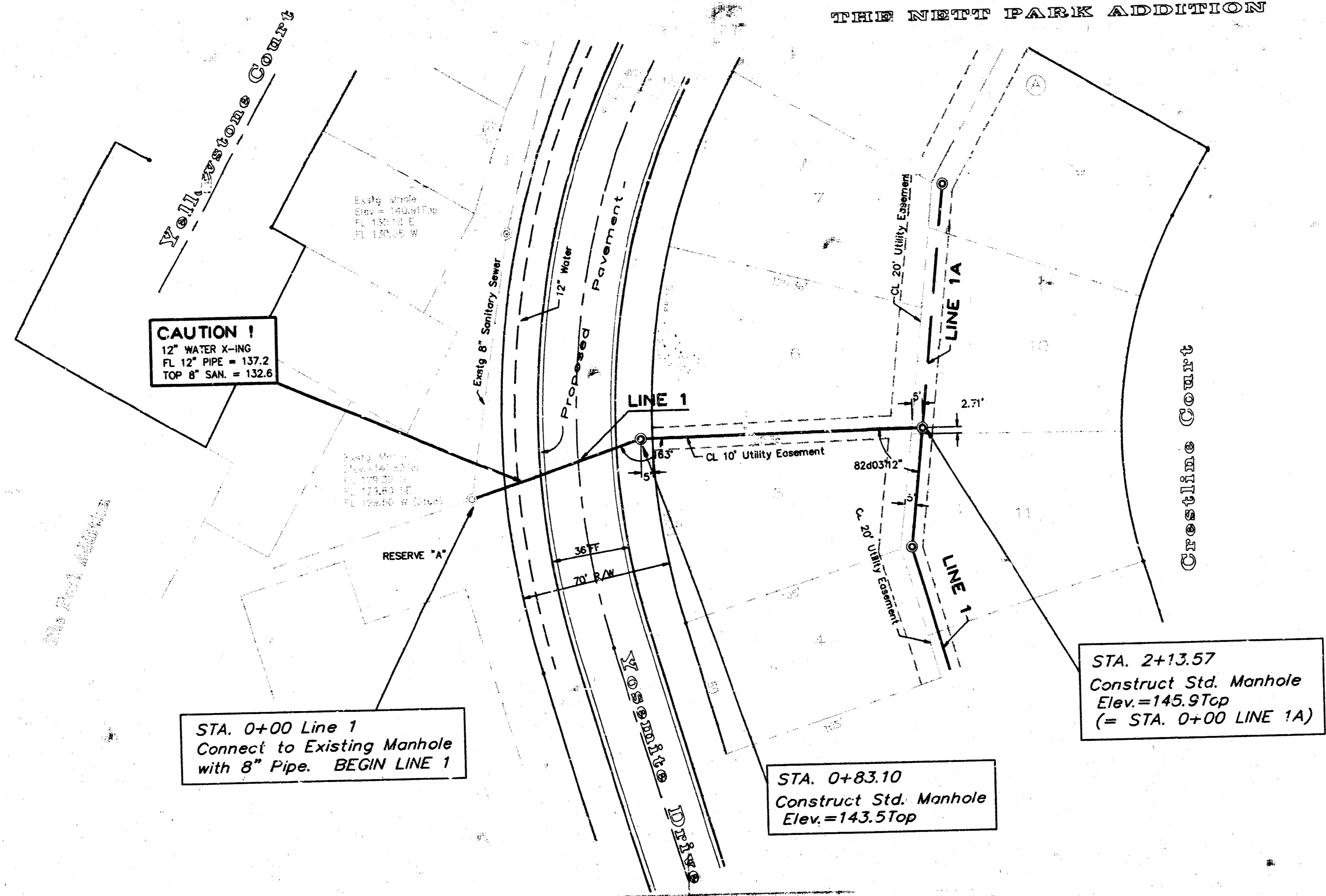


OCT1991

**Benchmarks:**

1. City Disc: Maize Rd. @ 27th St. S. 25' E. and 4' S. of 1/4 Sec cor. Elev. = 143.54 City datum
2. City Disc: S.E. Cor N.W. 1/4 Sec. (Sec. 5, T28S, R1W) Elev. = 128.38 City datum
3. "□" Cut Top of curb N. end N.W. return Rosemite @ Yellowstone. Elev. = 139.98 City datum

**THE NETT PARK ADDITION**

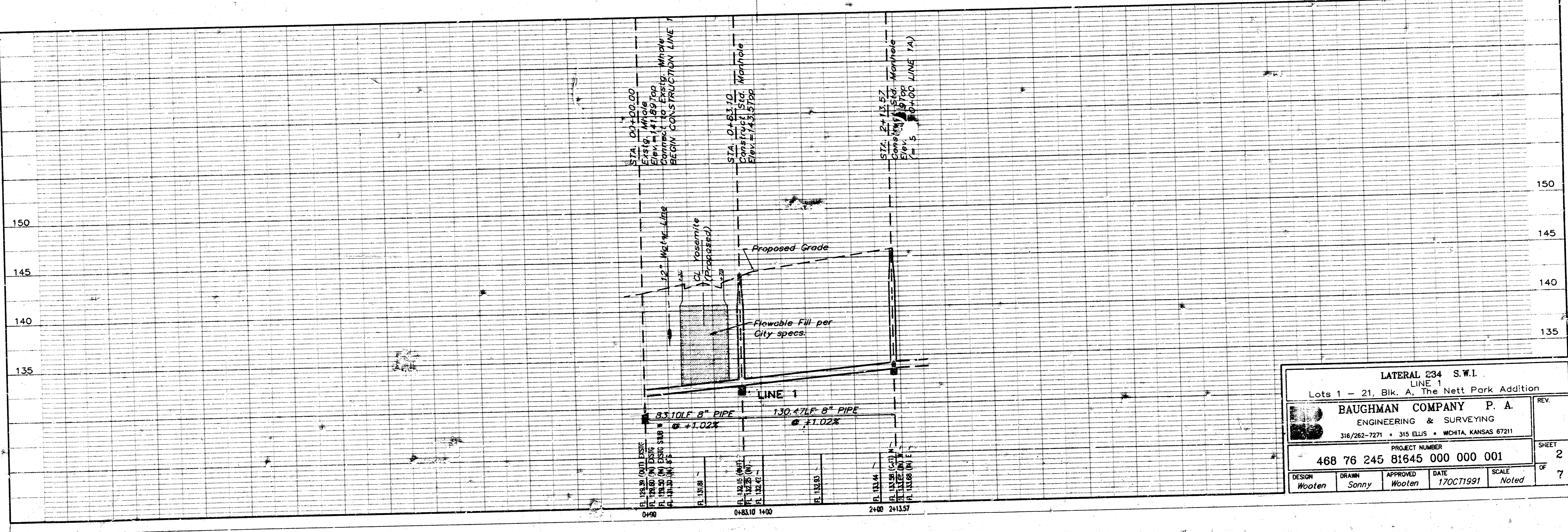


**CAUTION!**  
12" WATER X-ING  
FL 12" PIPE = 137.2  
TOP OF SAN. = 132.6

STA. 0+00 Line 1  
Connect to Existing Manhole  
with 8" Pipe. BEGIN LINE 1

STA. 0+83.10  
Construct Std. Manhole  
Elev. = 143.5 Top

STA. 2+13.57  
Construct Std. Manhole  
Elev. = 145.9 Top  
(= STA. 0+00 LINE 1A)

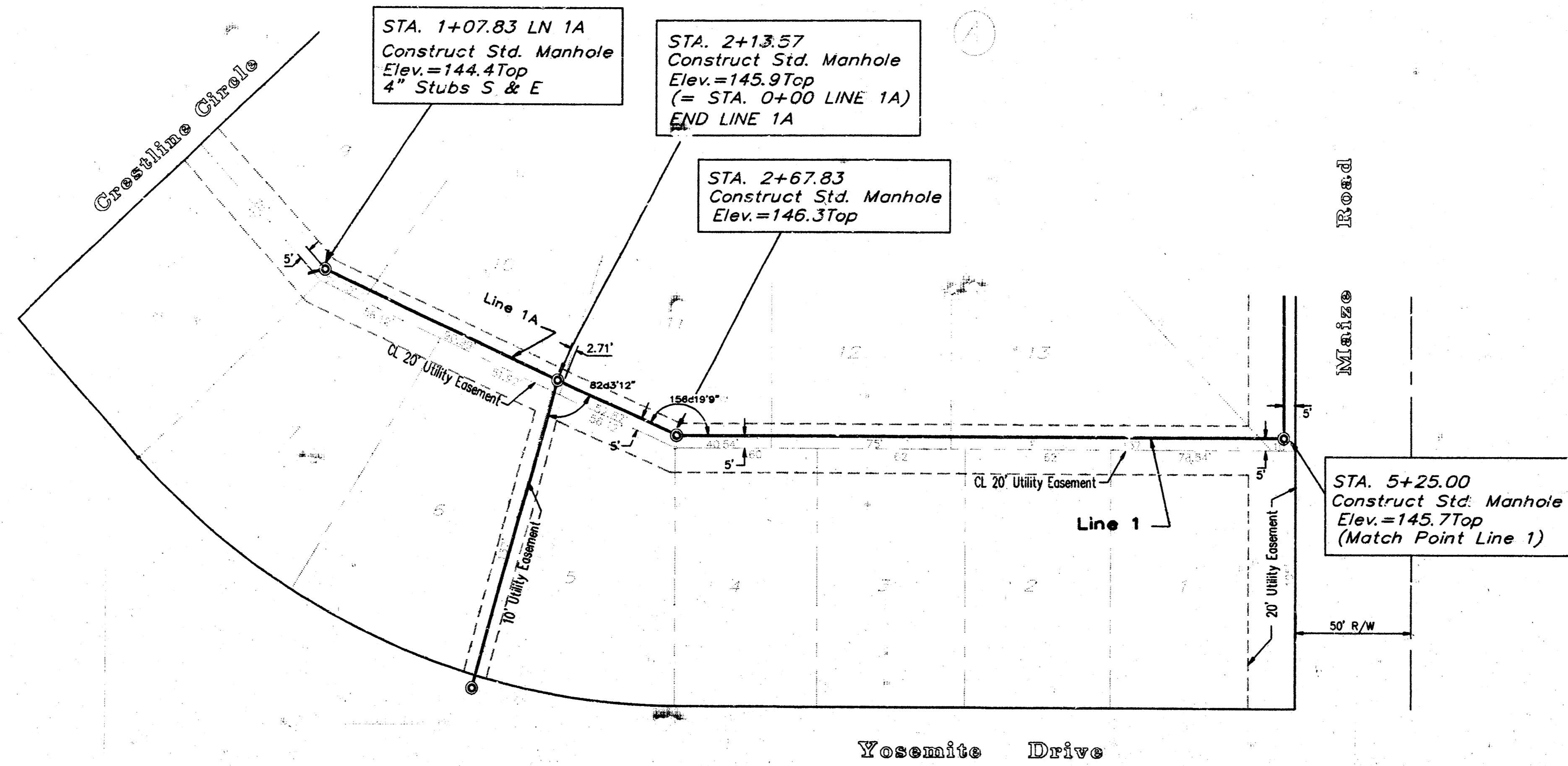


LATERAL 234 S.W.I. LINE 1 Lots 1 - 21, Blk. A, The Nett Park Addition				REV.
BAUGHMAN COMPANY P. A. ENGINEERING & SURVEYING 316/262-7271 • 315 ELLIS • WICHITA, KANSAS 67211				
PROJECT NUMBER 468 76 245 81645 000 000 001				SHEET 2
DESIGN Wooten	DRAWN Sonny	APPROVED Wooten	DATE 17OCT1991	SCALE Noted
				OF 7

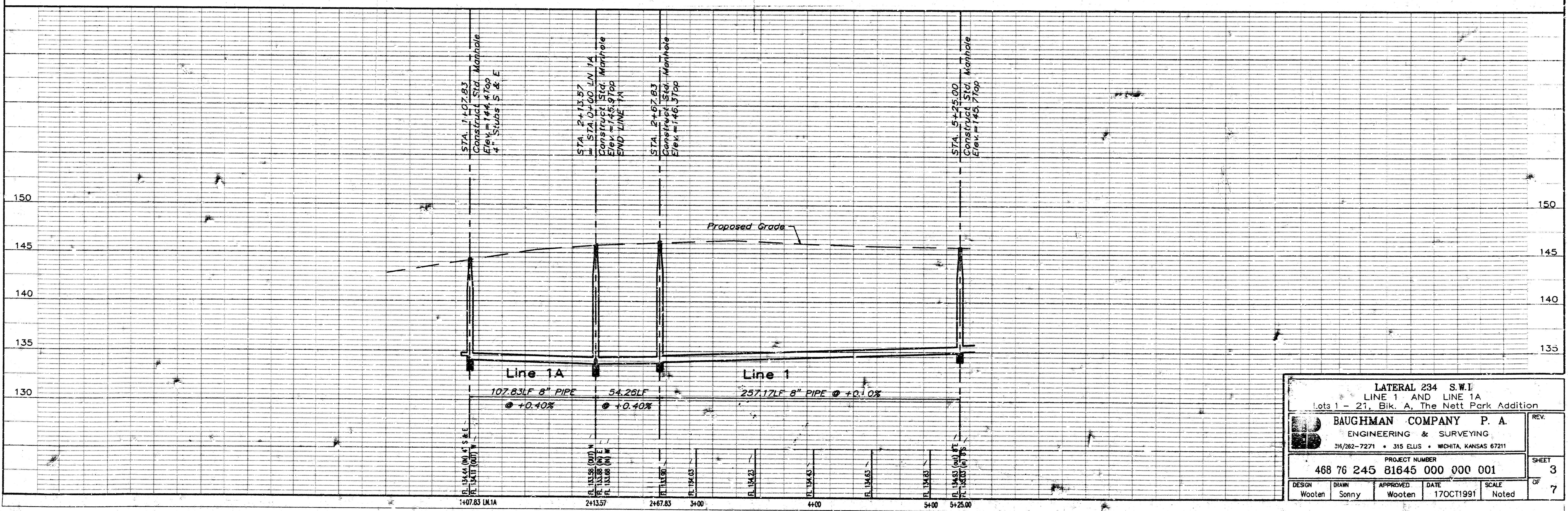
**Benchmarks:**

1. City Disc: Maize Rd. @ 27th St. So. 25' E. and 4' S. of 1/4 Sec cor. Elev. = 145.54 City datum
2. City Disc: S.E. Cor N.W. 1/4 Sec. (Sec. 5, T29S, R1W) Elev. = 126.34 City datum
3. "C" Cut Top of curb N. end N.W. return Yosemite @ Yellowstone. Elev. = 139.98 City datum

**THE NETT PARK ADDITION**



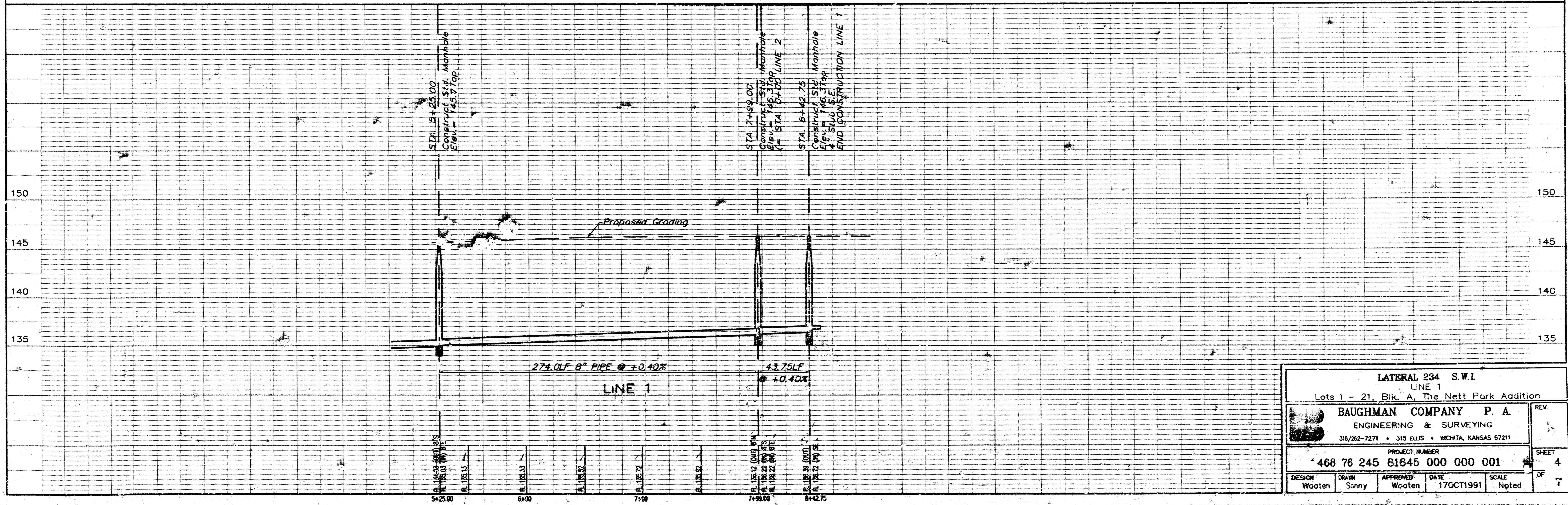
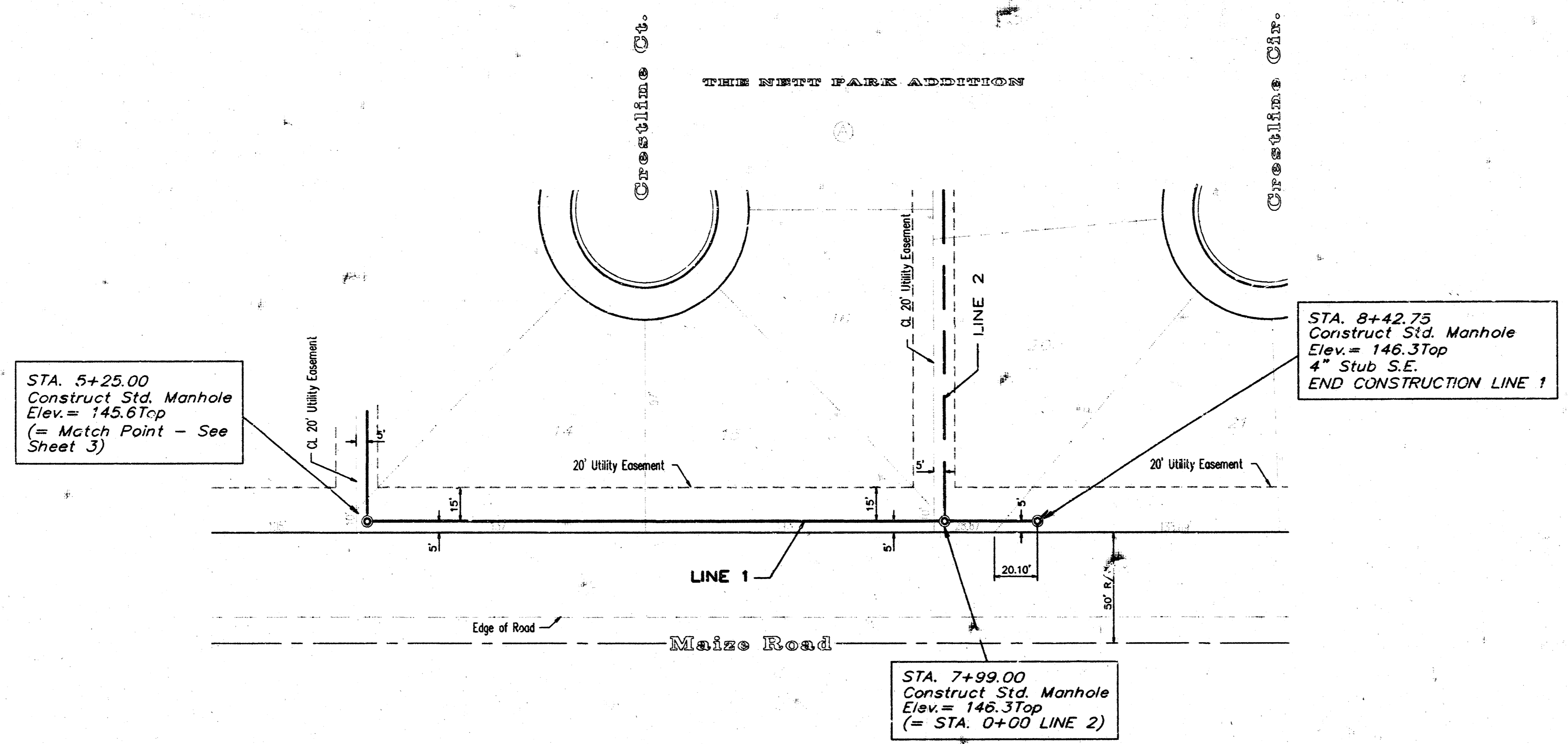
Scale: 1" = 40' Horz.  
1" = 5' Vert.



LATERAL 234 S.W.I			
LINE 1 AND LINE 1A			
lots 1 - 21, Blk. A, The Nett Park Addition			
		REV.	
BAUGHMAN COMPANY P. A. ENGINEERING & SURVEYING 316/282-7271 • 315 ELLIS • WICHITA, KANSAS 67211			
PROJECT NUMBER			
468 76 245 81645 000 000 001			
DESIGN	DRAWN	APPROVED	DATE
Wooten	Sonny	Wooten	17OCT1991
SCALE			NOTED
SHEET			3
OF			7

**Benchmarks:**

1. City Disc. Maize Rd. @ 27th St. So. 26' E. and 4' S. of 1/4 Sec cor. Elev. = 143.54 City datum
2. City Disc. S.E. Cor N.W. 1/4 Sec. (Sec. 5, T28S, R1W) Elev. = 128.38 City datum
3. "C" Cut Top of curb N. and N.W. return Yosemite @ Yellowstone. Elev. = 139.98 City datum



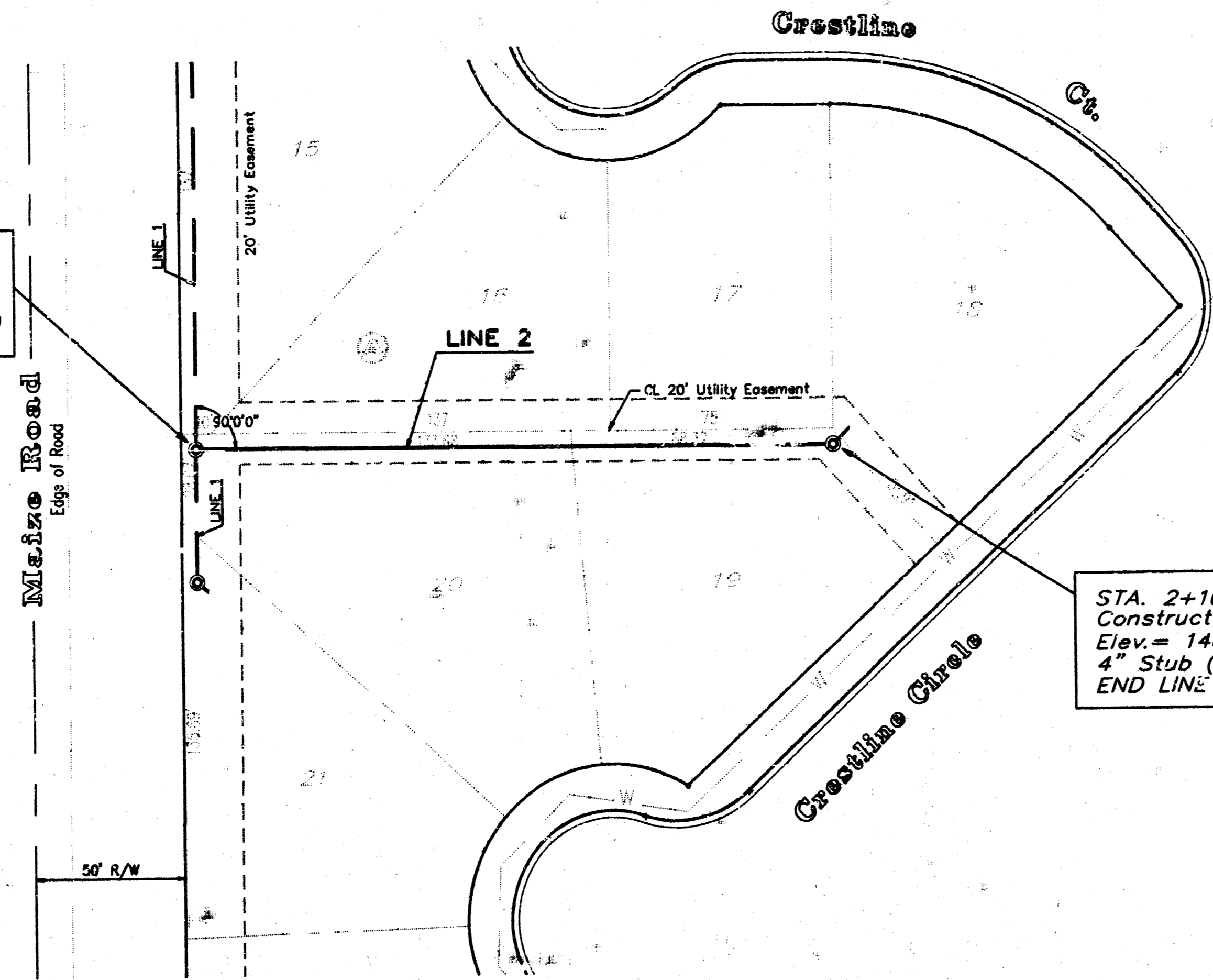
LATERAL 234 S.W.I. LINE 1 Lots 1 - 21, Blk. A, The Nett Park Addition			
<b>BAUGHMAN COMPANY P. A.</b> ENGINEERING & SURVEYING 316/262-7271 • 315 ELLIS • WICHITA, KANSAS 67211			REV. A
PROJECT NUMBER <b>468 76 245 81645 000 000 001</b>			
DESIGN Wooten	DRAWN Sonny	APPROVED Wooten	DATE 17OCT1991
		SCALE Noted	SHEET 4 OF 2

**Benchmarks:**

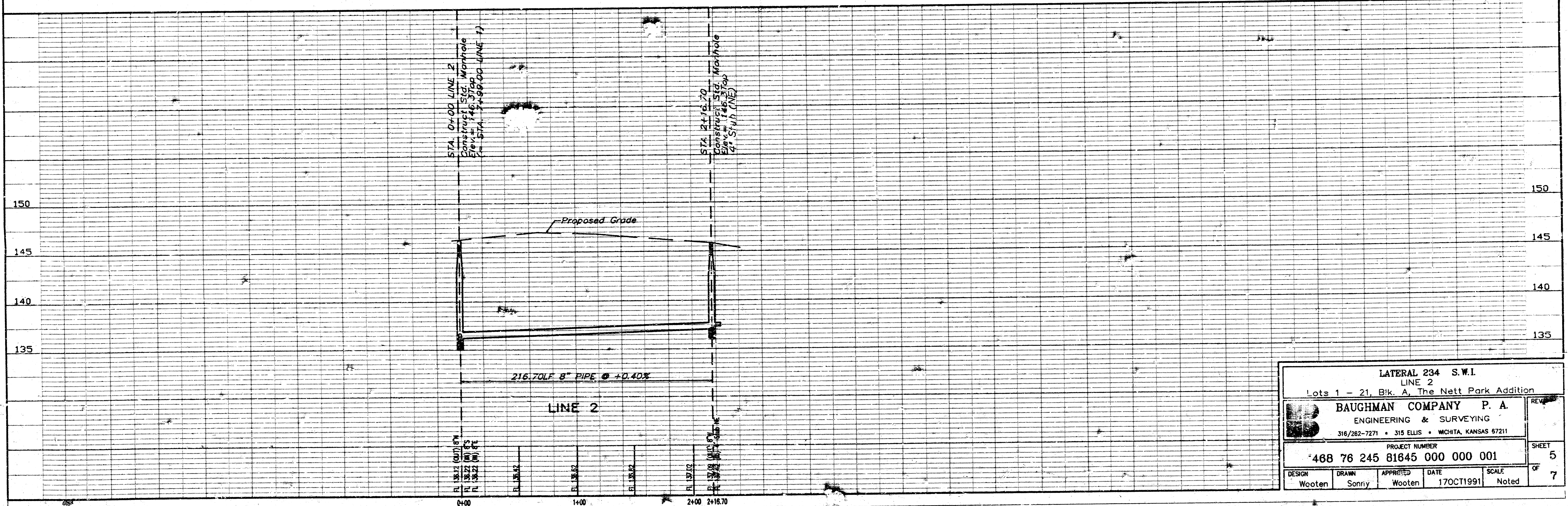
1. City Disc. Maize Rd. @ 27th St. So. 25' E. and 4' S. of 1/4 Sec cor. Elev. = 143.54 City datum
2. City Disc. S.E. Cor N.W. 1/4 Sec. (Sec. 5, T28S, R1W) Elev. = 128.38 City datum
3. "□" Cut Top of curb N. end N.W. return Yosemite @ Yellowstone. Elev. = 139.88 City datum


**THE NETT PARK ADDITION**

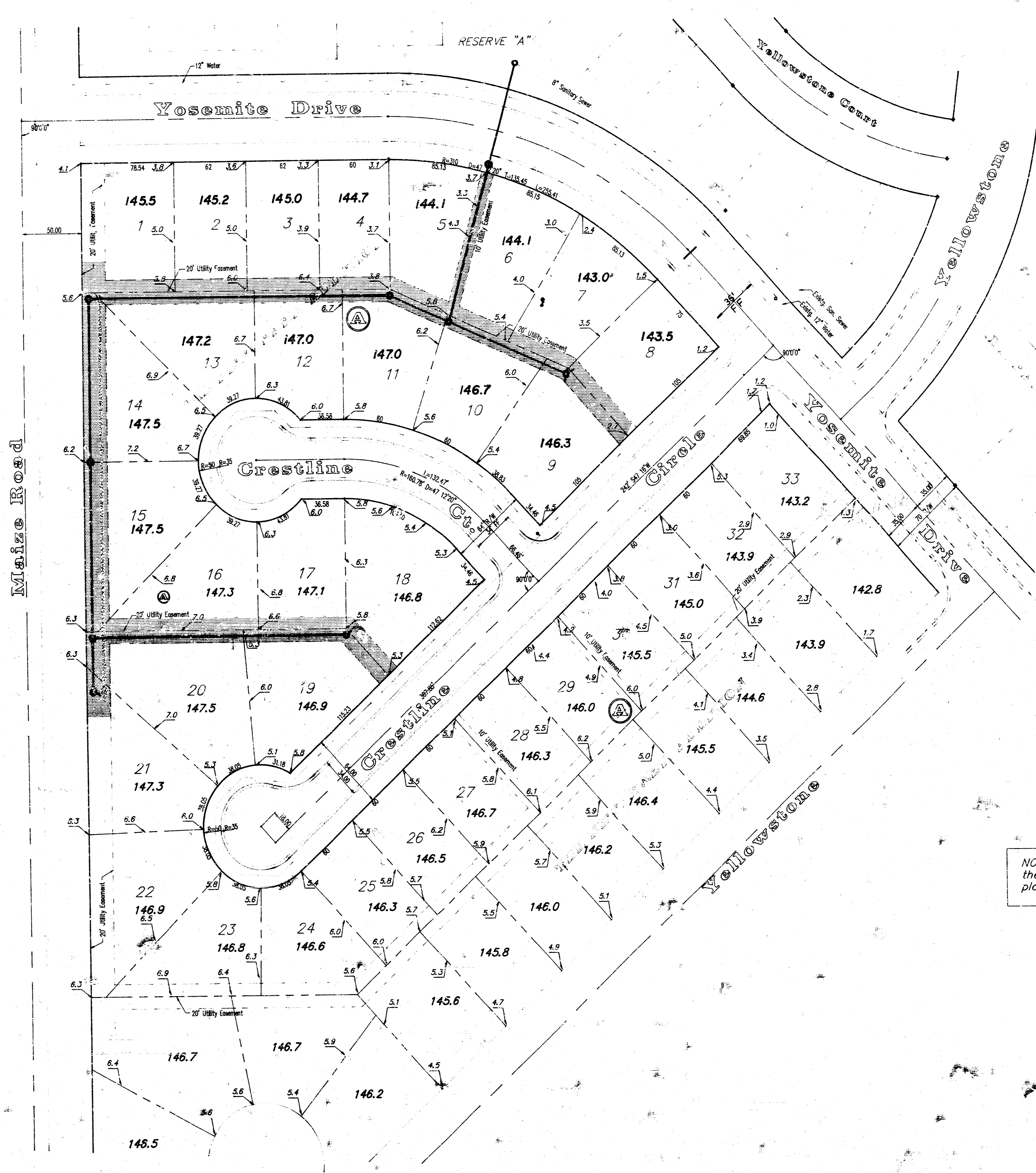
STA. 0+00 LINE 2  
Construct Std. Manhole  
Elev. = 146.3Top  
(= STA. 7+99.00 LINE 1)



Scale: 1" = 40' Horz  
1" = 5' Vert



LATERAL 234 S.W.1				
LINE 2				
Lots 1 - 21, Blk. A, The Nett Park Addition				
 <b>BAUGHMAN COMPANY P. A.</b> ENGINEERING & SURVEYING 316/282-7271 • 315 ELLIS • WICHITA, KANSAS 67211				REV.
PROJECT NUMBER				SHEET
468 76 245 81845 000 000 001				5
DESIGN	DRAWN	APPROVED	DATE	SCALE
Wooten	Sonny	Wooten	17OCT1991	Noted
				OF
				7



Scale: 1" = 50'

**BENCHMARKS**

1. City Disc: Maize Rd. @ 27th St. So. 25' E. and 4' S. of 1/4 Sec cor. Elev.= 145.54 City datum
2. City Disc: S.E. Cor N.W. 1/4 Sec. (Sec. 5, T28S, R1W) Elev.= 128.38 City datum
3. "□" Cut Top of curb N. end N.W. return Yosemite @ Yellowstone. Elev.= 139.98 City datum

NOTE: Contractor shall grade the sanitary sewer alignment to the profile and elevation shown on the easement grading plan. All costs for grading shall be subsidiary to the project.

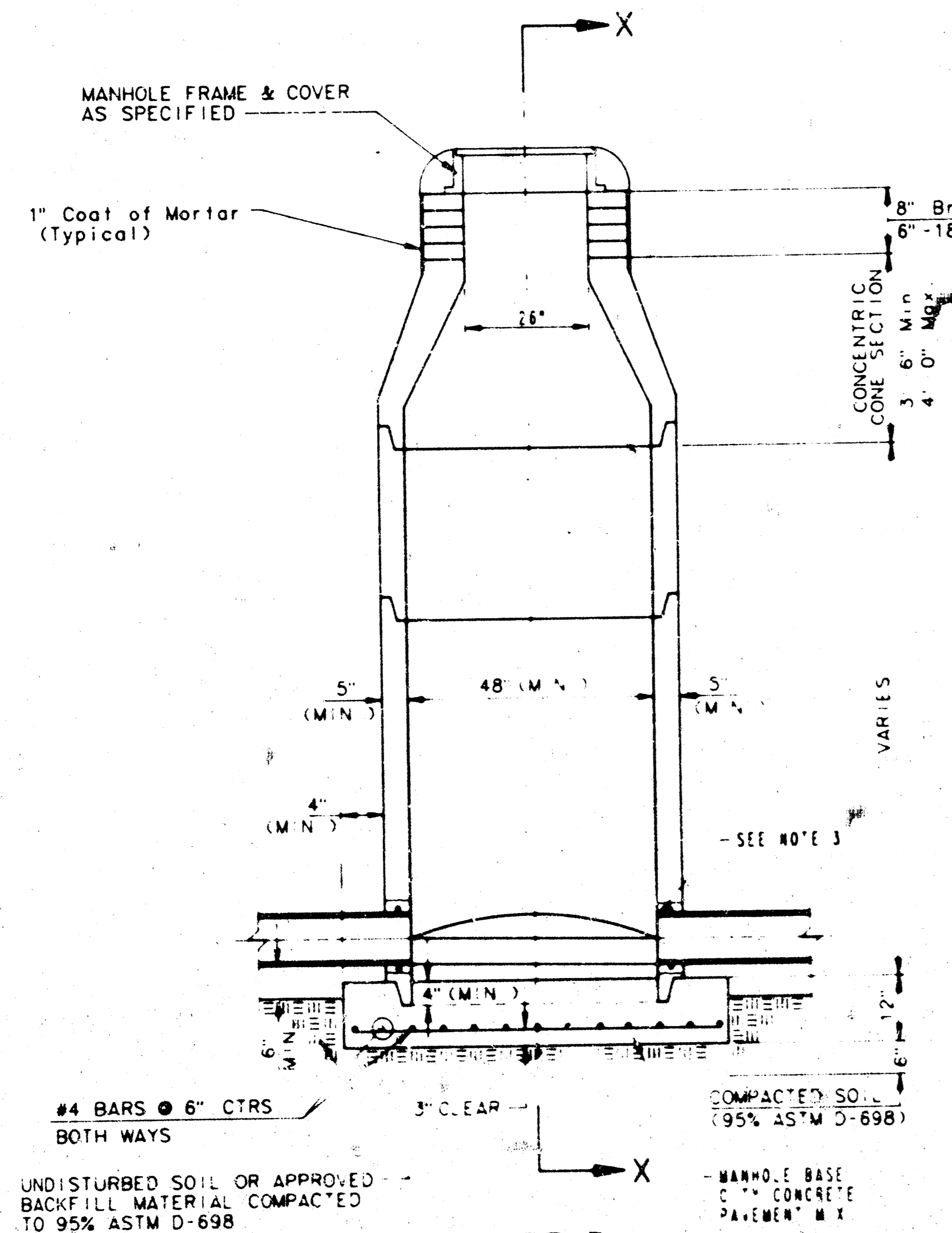
<b>Easement Grading Plan</b>				
The Nett Park Phase III				
<b>BAUGHMAN COMPANY P. A.</b>				
ENGINEERING & SURVEYING				
318/262-7271 • 315 ELLIS • WICHITA, KANSAS 67211				
PROJECT NUMBER				SHEET
468 76 245 81645 000 000 001				OF 6
DESIGN	DRAWN	UTIL. CHECK'D	DATE	SCALE
Ruggles	RJP/Sonny		OCT1991	1" = 50'

# SEWER APPURTENANCES DETAILS

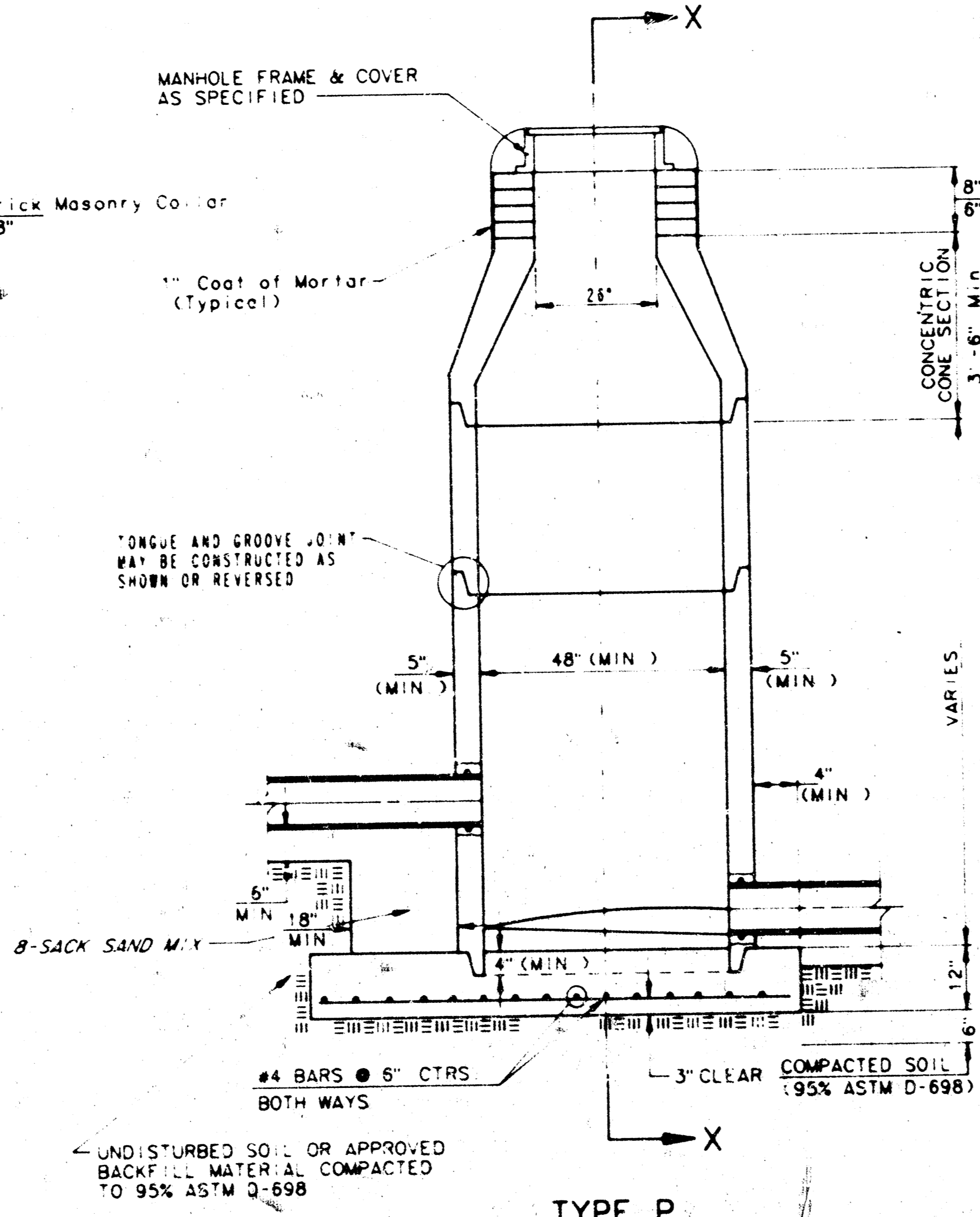
## ADOPTED AS STANDARD DESIGN

### BY

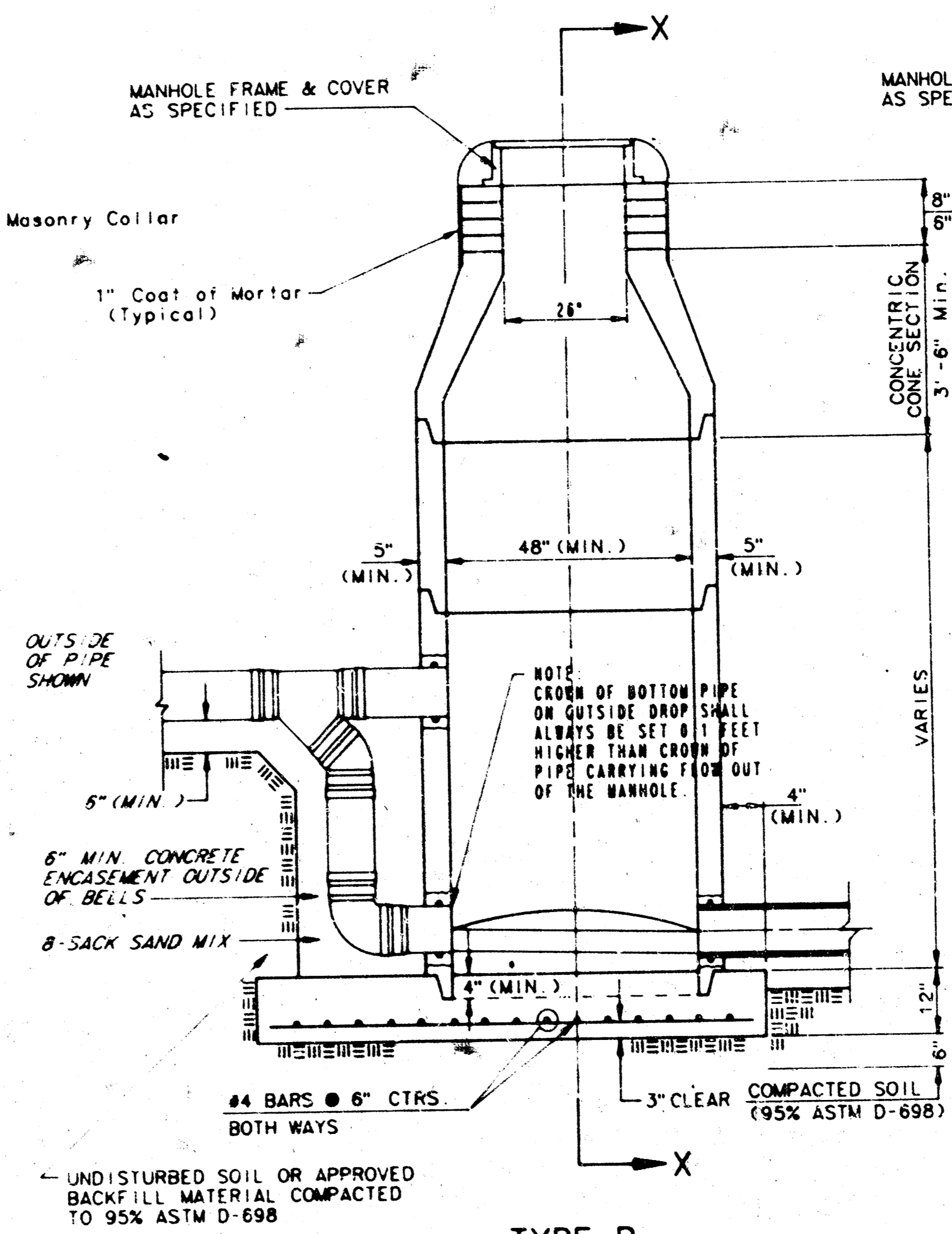
## CITY OF WICHITA



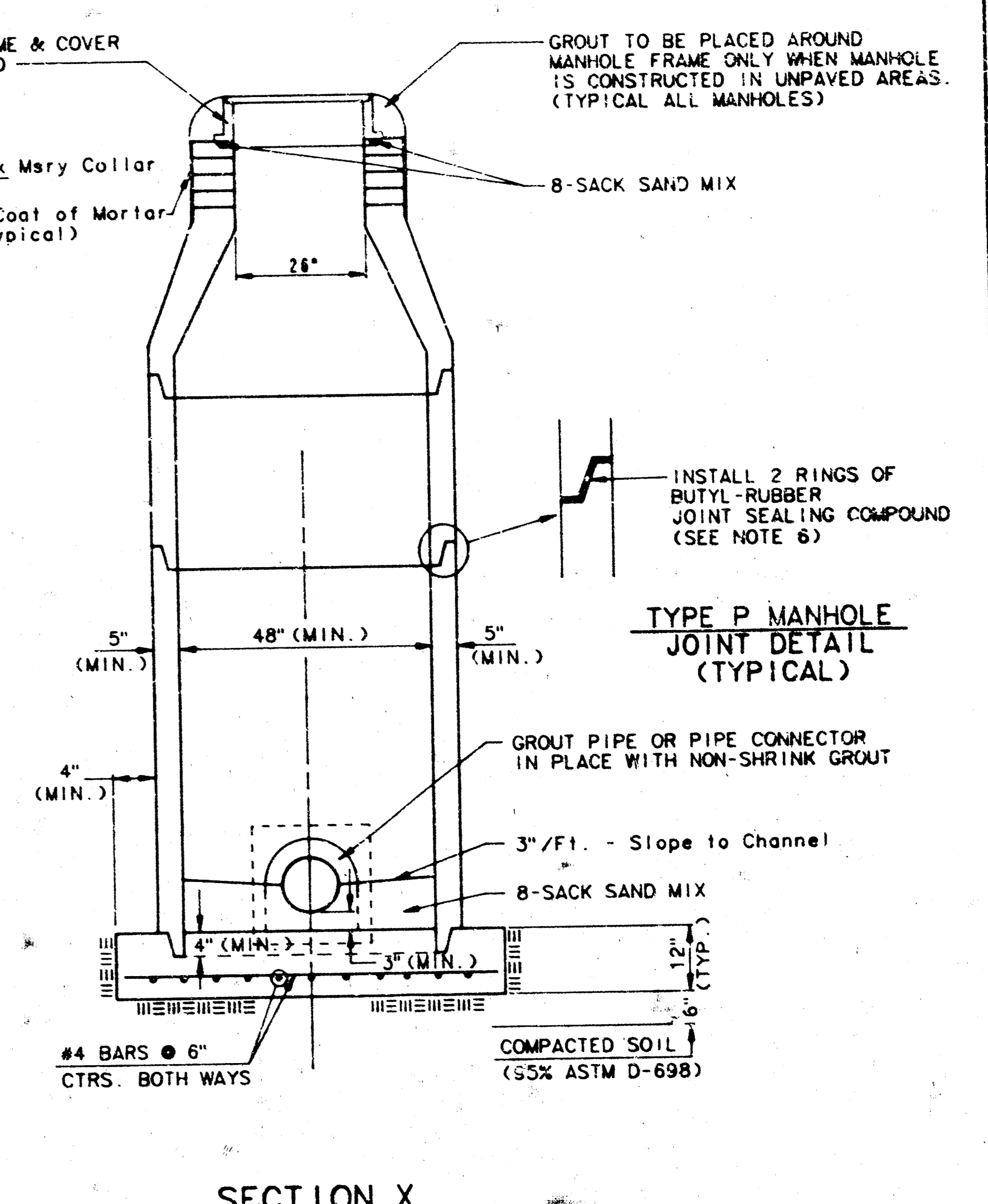
**TYPE P  
STANDARD MANHOLE**



**TYPE P  
INSIDE DROP MANHOLE**



**TYPE P  
OUTSIDE DROP MANHOLE**



**SECTION X  
(TYPICAL)**

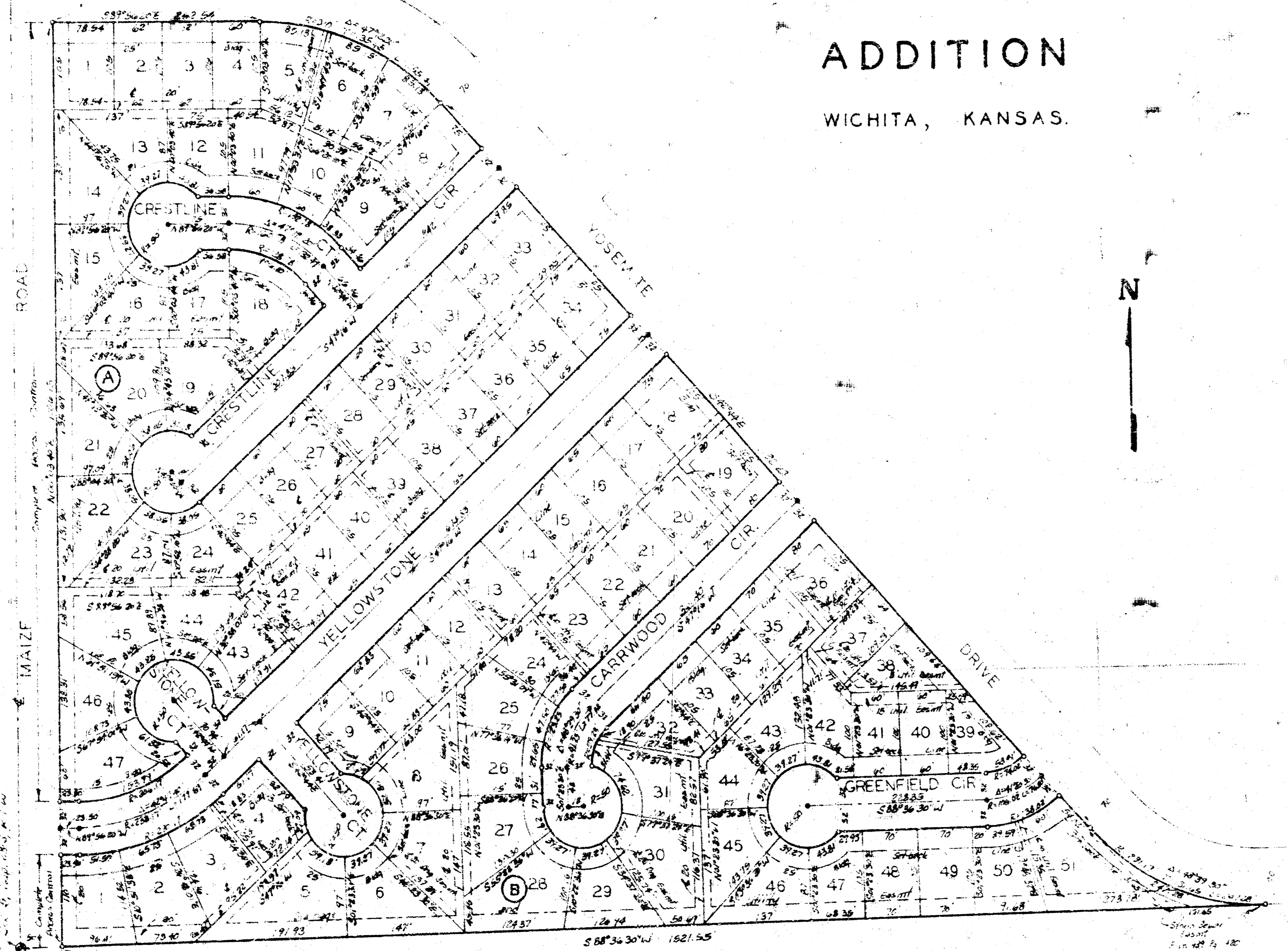
**GENERAL NOTES**

- PRECAST MANHOLE NOTES**
1. ALL PRECAST CONCRETE MANHOLE SECTIONS SHALL CONFORM TO THE LATEST REVISION OF A.S.T.M. C-478 AS MODIFIED BY THE SPECIFICATIONS.
  2. NON-SHRINK GROUT SHALL BE NON-METALLIC TYPE.
  3. APPROVED FLEXIBLE WATERSTOP GASKETS SHALL BE INSTALLED TO JOIN THE SEWER TO THE MANHOLE WALL WHEN A B.S. COMPOSITE PIPE OR P.V.C. PIPE IS USED. FOR OTHER TYPES OF PIPE THE SEWER SHALL BE GROUTED IN PLACE WITH NON-SHRINK GROUT. THE SEWER PIPE SHALL BE SUPPORTED WITH CONCRETE ENCASEMENT A MINIMUM OF 3 FEET FROM THE MANHOLE WALL AND TO THE FIRST JOINT FOR P.V.C. SUCH THAT THE JOINT REMAINS CLEAR.
  4. ALL INSIDE SURFACES OF THE CONCRETE MANHOLE WHICH WOULD BE EXPOSED TO SEWER GAS SHALL BE COATED WITH 2 COATS TREMEC SERIES 60 MORTAR EPITOLITE DRY MIX CEMENTS (MIN.)
  5. EXTERIOR MANHOLE WALLS SHALL BE COATED WITH 1 COAT MORTAR 633 BITUMINOUS COATING.
  6. JOINT SEALING COMPOUND SHALL BE KENT SEAL NO. 2 OR APPROVED EQUAL.
  7. PRECAST MANHOLES SHALL BE SET AT LEAST 4 INCHES INTO THE MANHOLE BASE.
  8. TOP OF MANHOLE FLOOR SLAB SHALL BE AT LEAST 3 INCHES BELOW THE FLOW LINE OF THE OUTLET PIPE TO INSURE SUFFICIENT MINIMUM THICKNESS OF SHAPED INVERT.
  9. LIFTING HOLES SHALL BE FILLED WITH NON-SHRINK GROUT AND THE INTERIOR SURFACE COATED AS SPECIFIED.
  10. MORTAR USED IN MASONRY CONSTRUCTION SHALL CONTAIN 8 SACKS OF CEMENT PER CUBIC YARD. CONCRETE USED IN MANHOLE BASES SHALL CONFORM TO THE REQUIREMENTS OF CONCRETE FOR CONCRETE PAVEMENT CONSTRUCTION AS SPECIFIED IN THE CITY STANDARD PAVING SPECIFICATIONS USING CITY CONCRETE PAVEMENT MIX WITHOUT AIR ENTRAINING ADJUTURE. MORTAR SHALL BE PLACED AROUND THE MANHOLE RING AS SHOWN ON THE DRAWINGS WHEN MANHOLES ARE CONSTRUCTED IN UNPAVED AREAS. MANHOLES CONSTRUCTED WHERE PIPE SIZES ARE SMALLER THAN 24\"/>

11. REINFORCING STEEL SHALL BE INSTALLED IN THE MANHOLE BASES AND SHALL CONSIST OF NO. 4 BARS PLACED ON 6\"/>
- 12. OPENINGS SHALL BE CUT INTO THE MANHOLE WALL WHEN OUTSIDE DROPS ARE CONSTRUCTED ON EXISTING MANHOLES. SUCH OPENINGS CUT INTO EXISTING MANHOLES SHALL BE AS SMALL AS PRACTICAL TO FACILITATE INSTALLING AND GROUTING THE NEW PIPE IN PLACE. WATERSTOP GASKETS SHALL BE USED WITH P.V.C. AND A B.S. COMPOSITE PIPE. THE NEW PIPE SHALL BE GROUTED INTO THE OPENING USING AN APPROVED NON-SHRINK GROUT FOR THE FULL MANHOLE WALL THICKNESS. THE EXTERIOR OF THE COMPLETED CONNECTION SHALL BE SEALED WITH AN APPROVED BITUMINOUS COATING SUCH THAT THE CONNECTION WILL BE WATER TIGHT. FLOOR OF MANHOLE SHALL BE MODIFIED TO FORM NEW FLOW CHANNEL FOR THE NEW CONNECTION AS INDICATED BY THE DRAWING. THIS WORK, INCLUDING MODIFICATION OF MANHOLE FLOOR, SHALL BE PAID FOR AT THE UNIT PRICE BID FOR OUTSIDE DROP STACK CONSTRUCTED ON EXISTING MANHOLE.
- 13. THE FLOORS OF ALL MANHOLES SHALL BE SHAPED WITH FLOW CHANNELS SUCH THAT THE MANHOLES WILL BE SELF-CLEANING AND FREE OF AREAS WHERE SOLIDS COULD BE DEPOSITED AS SEWAGE FLOWS THROUGH THE MANHOLE FROM ALL INLET PIPES TO THE OUTLET PIPE. FLOW CHANNELS SHALL BE FORMED TO BE AT THE BOTTOM HALVES OF THE INFLOWING PIPES AND THE OUTLET PIPE AS SHOWN BY THE DRAWINGS EXCEPT FOR INSIDE DROP MANHOLES. FLOW CHANNELS FOR INSIDE DROP MANHOLES SHALL BE CONSTRUCTED AS INDICATED BY THE DRAWING. MANHOLE FLOORS SHALL HAVE SLOPES OF 3 INCHES PER FOOT IN THE AREAS OUTSIDE OF THE FLOW CHANNELS SLOPED TOWARD THE FLOW CHANNELS. PIPES LAID THROUGH MANHOLES SHALL HAVE THE TOP HALF REMOVED TO NEAR LINES FOR THE FULL INSIDE DIAMETER OF THE MANHOLE. MANHOLE FLOORS SHALL THEN BE SHAPED AROUND THE BOTTOM HALF OF THE PIPE WHICH FORMS THE FLOW CHANNEL.
- 14. PIPES INSTALLED WITHIN THE EXCAVATION MADE FOR THE MANHOLE SHALL BE CRADLED WITH CONCRETE TO THE LIMITS OF THE MANHOLE EXCAVATION. WHEN CLAY PIPE IS USED, THE CRADLE SHALL EXTEND TO THE FIRST JOINT OUTSIDE THE MANHOLE. THE CRADLE SHALL BE TERMINATED AT THE CLAY PIPE JOINT IN A MANNER WHICH WILL MAINTAIN THE FLEXIBILITY OF THE JOINT. COST OF CRADLE WITHIN MANHOLE EXCAVATION OR TO CLAY PIPE JOINTS ADJACENT TO MANHOLE SHALL BE INCLUDED IN THE UNIT PRICE BID FOR THE MANHOLE.

15. MANHOLE COVER CASTINGS AND MANHOLE FRAME CASTINGS SHALL CONFORM TO THE REQUIREMENTS AS INDICATED IN THE STANDARD SPECIFICATIONS AND AS SHOWN IN THE STANDARD DETAIL DRAWING.
16. THE VERTICAL DROP IN INSIDE DROP MANHOLES SHALL NOT EXCEED 4\"/>
- 17. STANDARD MANHOLES AND STANDARD INSIDE DROP MANHOLES SHALL BE BID AS STANDARD MANHOLES FOR THE TYPE AND DIAMETER INDICATED. ALL MANHOLE DIAMETERS WILL BE 4\"/>
- 18. A BRICK MASONRY COLLAR SHALL BE INSTALLED BETWEEN THE CAST IRON FRAME AND THE CONCENTRIC CONE. THE COLLAR WILL HAVE 8\"/>

# THE NETT PARK ADDITION WICHITA, KANSAS.



This plat of THE NETT PARK ADDITION, Wichita, Kansas, has been submitted to and approved by the Board of Statute County Metropolitan Area Planning Commission, Wichita, Kansas, dated this 17th day of December, 1936.

And a copy of said plat is on file Planning Commission

\_\_\_\_\_  
Chairman  
\_\_\_\_\_  
Secretary

The plat of THE NETT PARK ADDITION, Wichita, Kansas, has been submitted to and approved by the Board of Commissioners of the City of Wichita, Kansas, this 17th day of December, 1936.

\_\_\_\_\_  
Mayor  
T. A. E. REA  
City Clerk

\_\_\_\_\_  
City Engineer

This is to certify that this plat has not been recorded and is not a part of the public records of the City of Wichita, Kansas, and is duly recorded.

\_\_\_\_\_  
Register of Deeds  
\_\_\_\_\_  
Deputy

\_\_\_\_\_  
Wichita State Bank

This is to certify that the plat of THE NETT PARK ADDITION, Wichita, Kansas, has been submitted to and approved by the Board of Statute County Metropolitan Area Planning Commission, Wichita, Kansas, dated this 17th day of December, 1936.

\_\_\_\_\_  
Surveyor

That all men by these presents that in the undersigned have caused the land herein described in the surveys, plat, etc. to be divided into lots, blocks and streets to be known as THE NETT PARK ADDITION, Wichita, Kansas, the utility easements are hereby granted as indicated by the construction and maintenance of all public utilities. The storm sewer easement is hereby granted for storm sewer purposes. The streets are hereby dedicated to and for the use of the public. All easements of access to or from the lots, over and across the west line of lots 1, 4, 15, 20, 21, 22, 45, and 46, Block A, and lots 1, Block B, are hereby granted to the City of Wichita, Kansas. The drainage easements are hereby granted for drainage purposes.

\_\_\_\_\_  
Surveyor  
\_\_\_\_\_  
City Engineer

This is to certify that the plat of THE NETT PARK ADDITION, Wichita, Kansas, has been submitted to and approved by the Board of Statute County Metropolitan Area Planning Commission, Wichita, Kansas, dated this 17th day of December, 1936.

\_\_\_\_\_  
Mayor  
\_\_\_\_\_  
City Clerk

\_\_\_\_\_  
City Engineer