

# SANITARY SEWER PLANS

## HUNTINGTON PLACE THIRD ADDITION

### LAT. 260, S.W.I.

### PROJECT NO.

## 468-76-245-81774-000-000-001

CITY OF WICHITA, KANSAS  
MICHAEL E. LINDEBAK, CITY ENGINEER

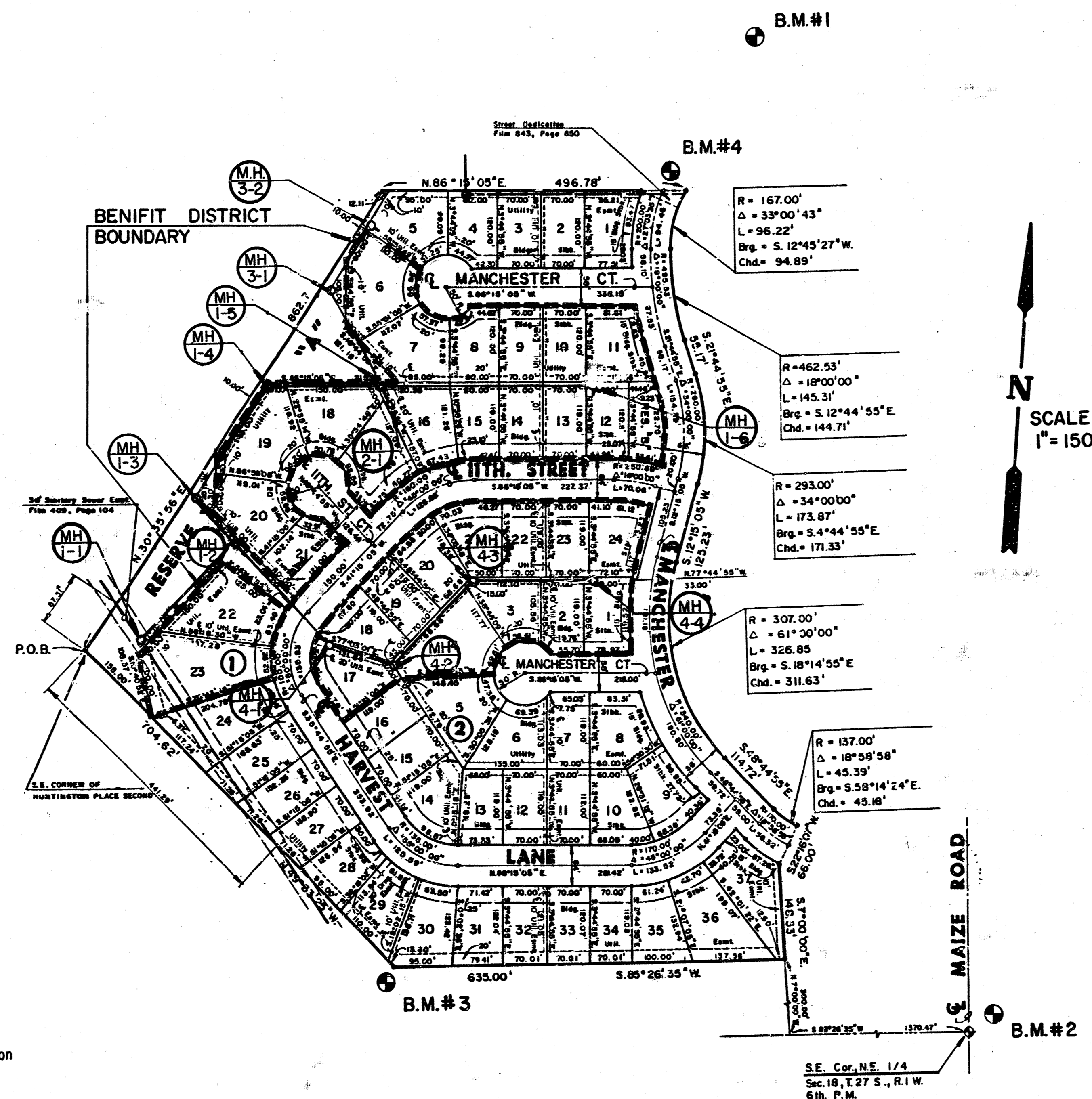
#### GENERAL NOTES

- THE CONTRACTOR SHALL BE RESPONSIBLE FOR PRESERVING PROPERTY IRONS. THE CONTRACTOR SHALL BE REQUIRED TO RE-ESTABLISH ANY PROPERTY IRONS WHICH ARE DAMAGED OR DESTROYED BY HIS CONSTRUCTION OPERATIONS. SUCH IRONS SHALL BE RE-ESTABLISHED BY A LICENSED LAND SURVEYOR OR A LICENSED PROFESSIONAL ENGINEER IN ACCORDANCE WITH STATE LAWS.
- A PORTION OF EXCESS EXCAVATED MATERIAL SHALL BE MOUNDED AROUND MANHOLES WHICH EXTEND MORE THAN ONE (1) FOOT ABOVE THE EXISTING GROUND. SUCH MOUNDS SHALL BE CONSTRUCTED WITH A SIX (6) FOOT DIAMETER FLAT TOP WITH 4 TO 1 SIDE SLOPES DOWN TO THE ORIGINAL GROUND. THE ELEVATION OF THE FLAT TOP OF THE MOUND SHALL BE 0.4 FOOT BELOW THE TOP OF THE MANHOLE.
- CONTRACTOR SHALL NOTIFY THE FOLLOWING UTILITY COMPANIES PRIOR TO ANY EXCAVATION:
 

ARKLA GAS COMPANY	942-9350
BELL TELEPHONE	1-316-571-2115
CABLEVISION	262-0661
GAS SERVICE COMPANY	263-7511
KANSAS GAS & ELECTRIC	1-800-344-7233
KANSAS ONE-CALL	524-0491
CITIES SERVICE	316-254-7243
KANSAS GAS SUPPLY	
- EXISTING UTILITIES AND THEIR LOCATIONS, AS SHOWN ON THE PLANS, REPRESENT THE BEST INFORMATION OBTAINABLE FOR DESIGN. LOCATION INFORMATION HAS BEEN OBTAINED FROM THE VARIOUS UTILITY COMPANIES AND IS EITHER FROM COMPANY RECORD DRAWINGS OR COMPANY PROVIDED FIELD LOCATIONS. THE PLAN LOCATIONS SHOWN ARE NOT GUARANTEED. ADDITIONAL EXISTING UTILITIES MAY ALSO BE ENCOUNTERED.
- ALL STUBS AND PLUGGED PIPES SHALL BE LOCATED WITH GREEN PLASTIC TAPE IN THE SAME MANNER AS RISERS.
- COST OF EXCAVATION, HAULING, AND DUMPING OF EXCESS EXCAVATION SHALL BE SUBSIDIARY TO THE PROJECT.
- PRIOR TO LAYING SEWER LINES USING EXISTING STUBS IN EXISTING MANHOLES, THE CONTRACTOR SHALL EXPOSE AND VERIFY THE ELEVATION, GRADE AND ALIGNMENT OF EXISTING STUBS AND NOTIFY THE ENGINEER OF ANY DEVIATION FROM THE PLAN. WHERE CONNECTING TO AN EXISTING MANHOLE THAT DOES NOT HAVE AN EXISTING STUB OR THE STUB IS UNUSABLE DUE TO ELEVATION GRADE OR ALIGNMENT, THE CONTRACTOR SHALL RESHAPE THE EXISTING MANHOLE INVERT TO PROVIDE SMOOTH FLOW. THE COST OF RESHAPING EXISTING MANHOLE INVERTS IS INCIDENTAL TO THE PROJECT.

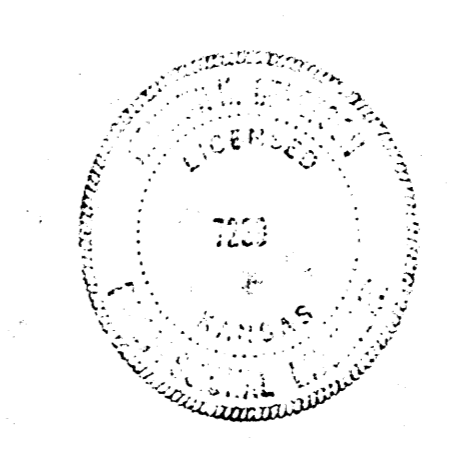
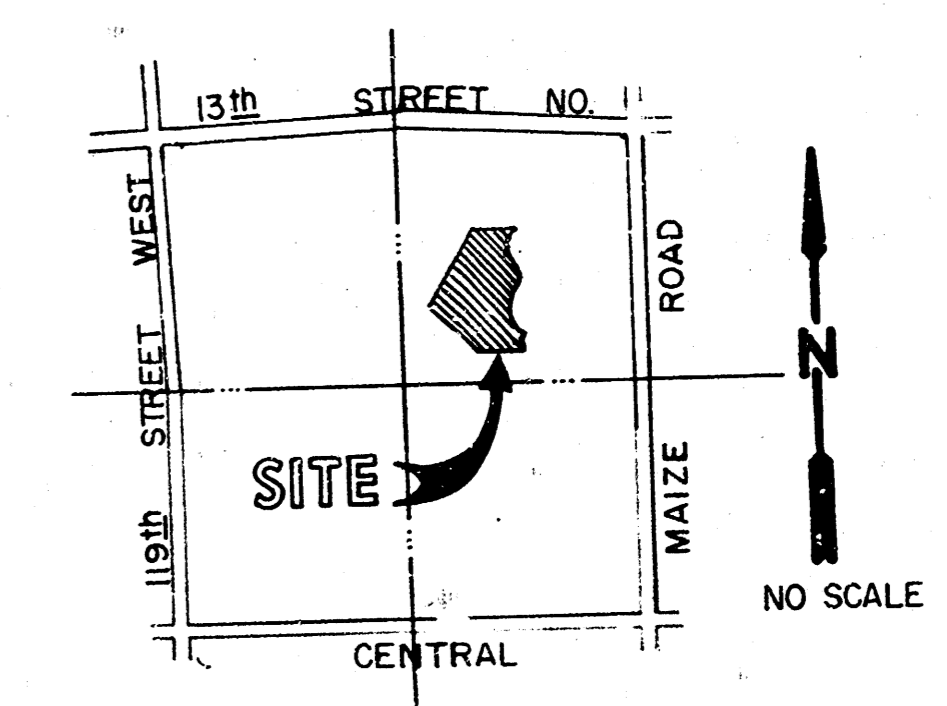
#### BENCH MARKS

- |   |  |
|---|--|
| <p>B.M. #1 "□" Cut on T.C., North End Return, NE Corner Manchester &amp; Ponderosa Circle, + 400' Northeast of N.E. Corner of Plat<br/>Elev. = 153.19</p> <p>B.M. #2 Maize &amp; 9th Street North, City of Wichita Bench Mark Disc, 32' North &amp; 38' East of Quarter Section Corner T18-275-R1W<br/>Elev. = 152.28</p> | <p>B.M. #3 Railroad spike in North side of corner fence post at the Southwest corner of Lot 30, Block 1, Huntington Place 3rd<br/>Elev. = 144.63</p> <p>B.M. #4 "□" cut on T.C. East curb of Manchester at the Northeast corner of Huntington Place 3rd<br/>Elev. = 153.77</p> |
|---|--|

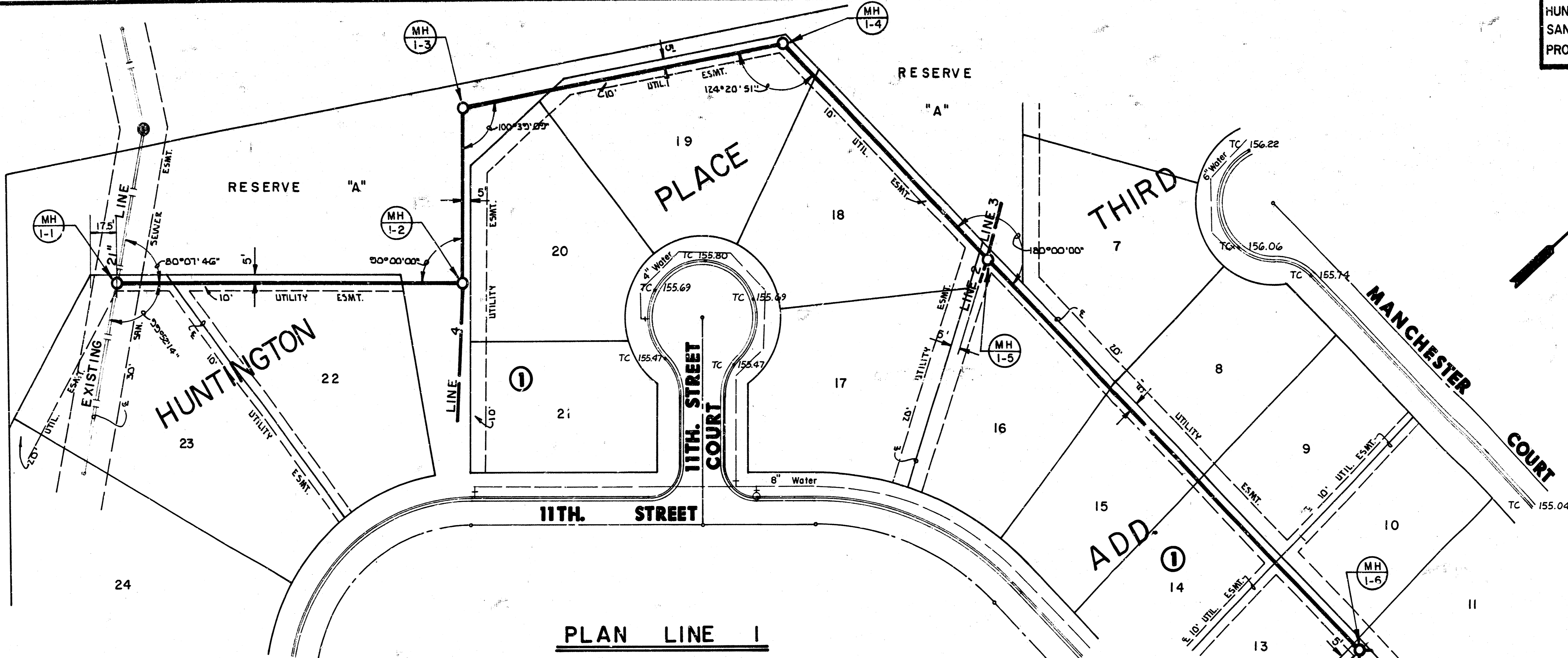


#### INDEX TO DRAWINGS

SHEET NO.	DESCRIPTION
1	TITLE SHEET
2	PLAN & PROFILE, LINE 1
3	PLAN & PROFILE, LINES 2 & 3
4	PLAN & PROFILE, LINE 4
5	FINAL PLAT



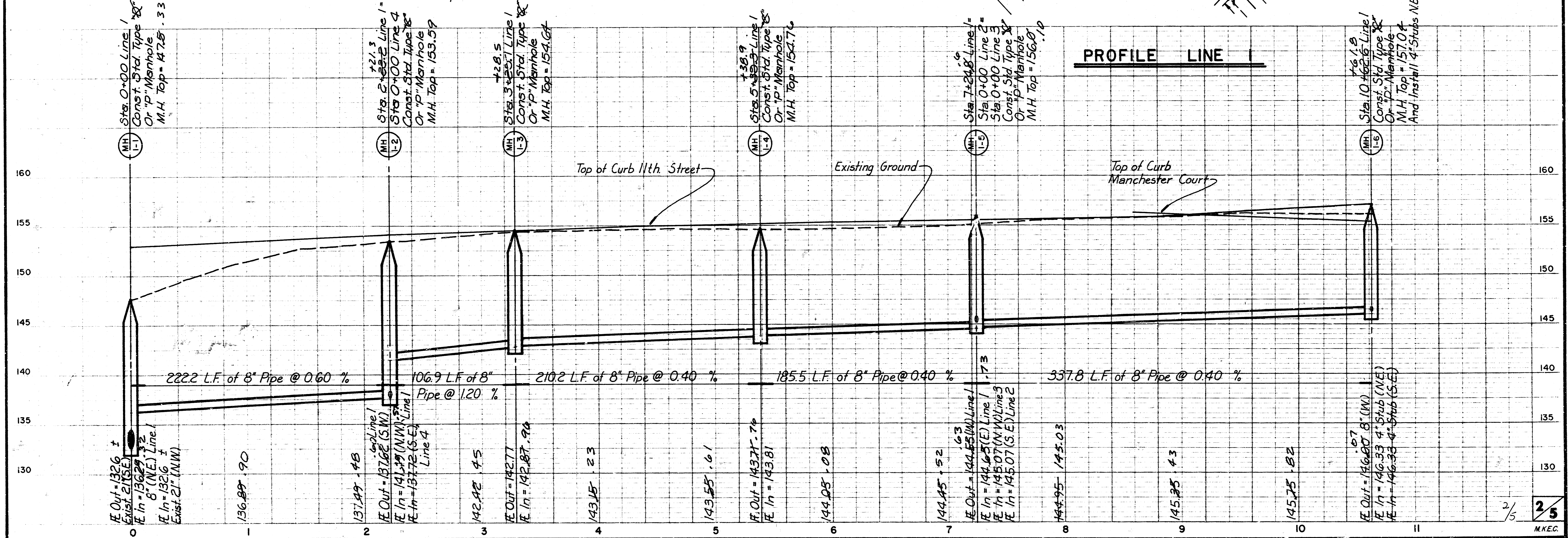
	<b>HUNTINGTON PLACE THIRD ADDITION SANITARY SEWER PLANS</b>	G.J.A. K.S.M. K.H.B. 1/11/87
	MID-KANSAS ENGINEERING CONSULTANTS PA 3500 NORTH ROCK ROAD BUILDING #100 WICHITA, KANSAS 67226	
		Sheet <b>1</b> of <b>5</b>



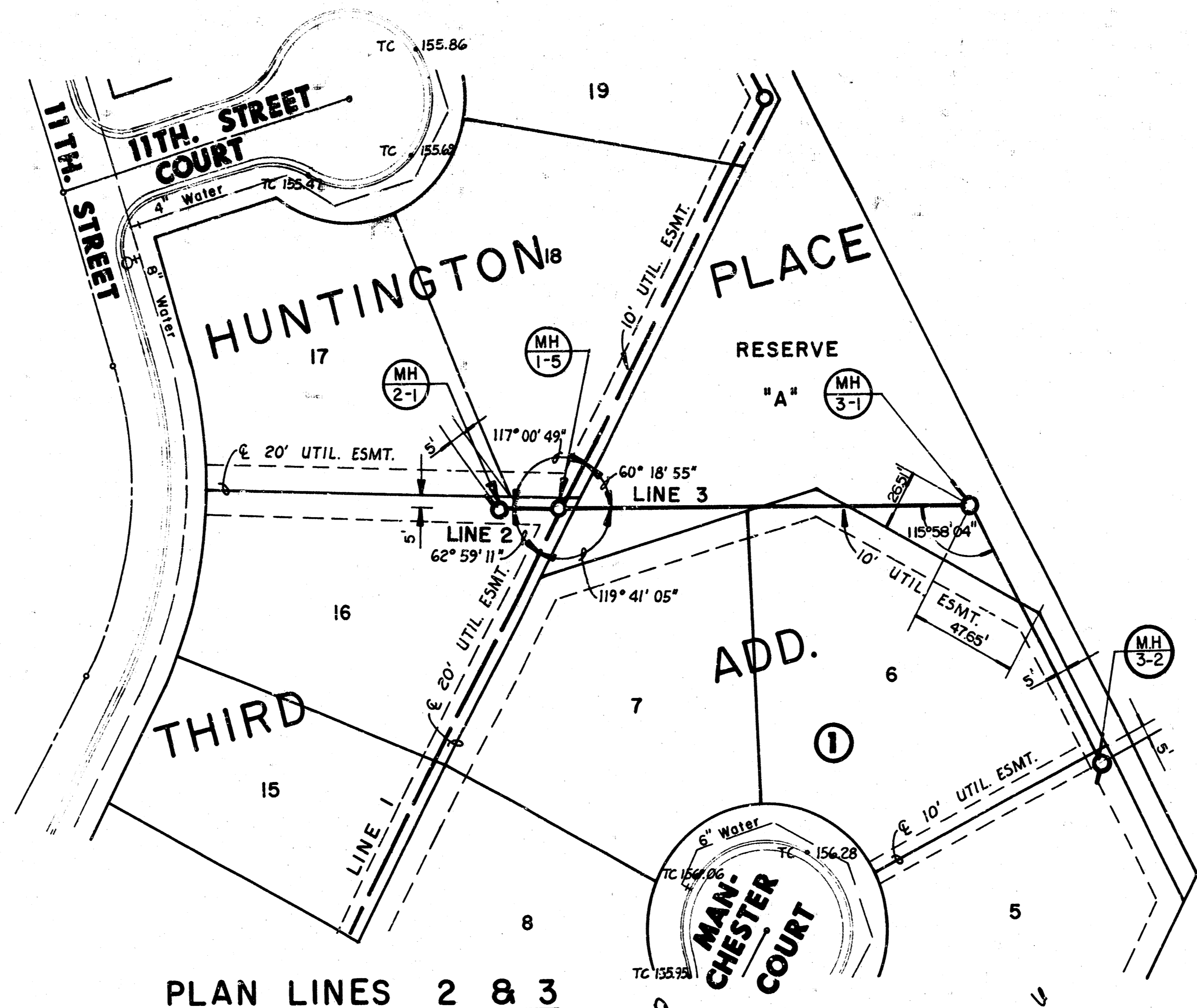
Scale: 1" = 40' Horiz.  
 1" = 5' Vert.

**PLAN LINE 1**

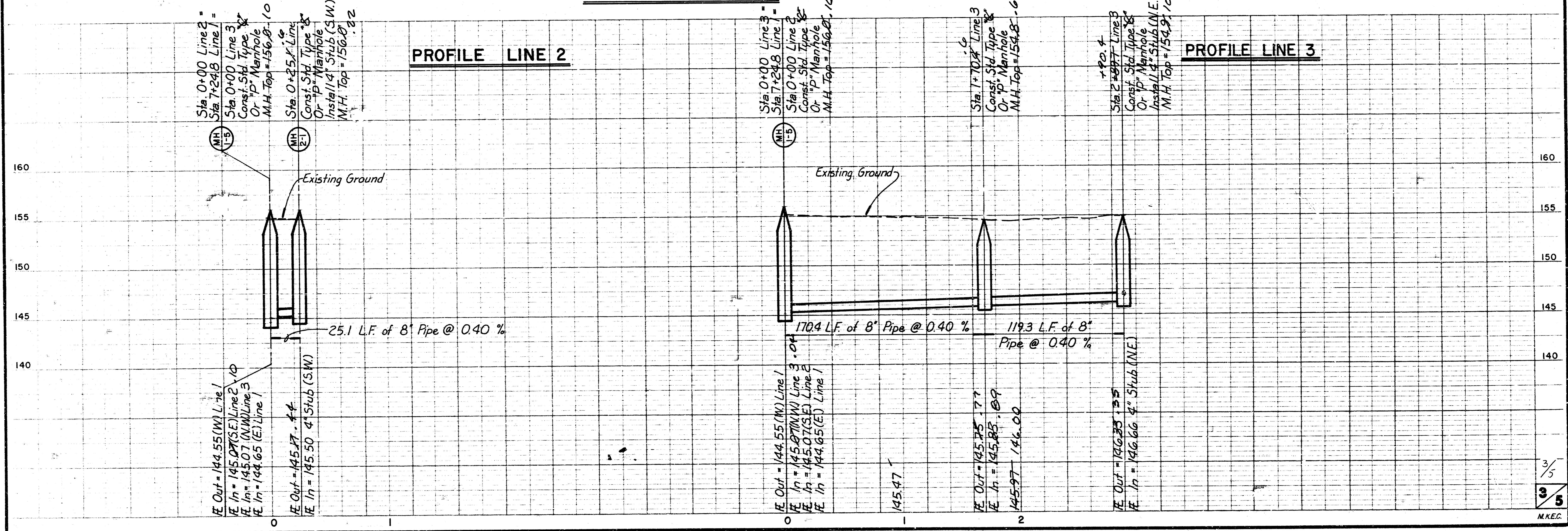
**PROFILE LINE 1**

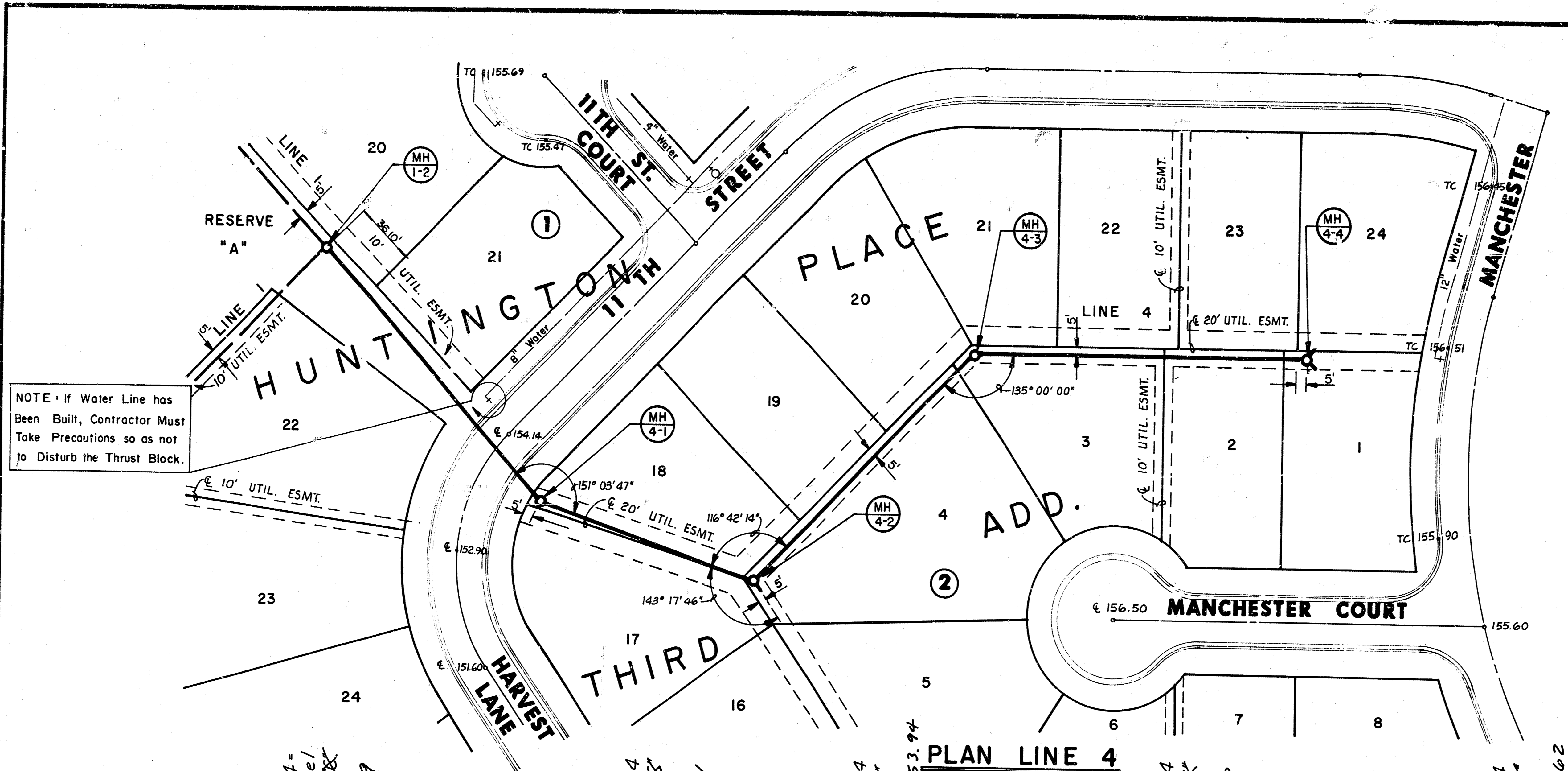


N  
 Scale: 1" = 40' Horiz.  
 1" = 5' Vert.



PLAN LINES 2 & 3





Scale: 1" = 40' Horiz.  
 1" = 5' Vert.

