

SANITARY SEWER LAT. 268, SOUTHWEST INTERCEPTOR

TO SERVE PART OF

GRAY'S 4th ADDITION SEDGWICK COUNTY, KANSAS

CITY OF WICHITA, KANSAS

M.E. LINDEBAK CITY ENGINEER

CITY PROJECT NO. 468-76-245-81830-000-000-001
INDEX NO. 740407

February, 1990

IMPROVEMENT DISTRICT DESCRIPTION

LOTS 78 THROUGH 90 INCLUSIVE, BLOCK "B".
LOTS 1 THROUGH 6 INCLUSIVE, BLOCK "C".
LOTS 3 and 4, BLOCK "D."

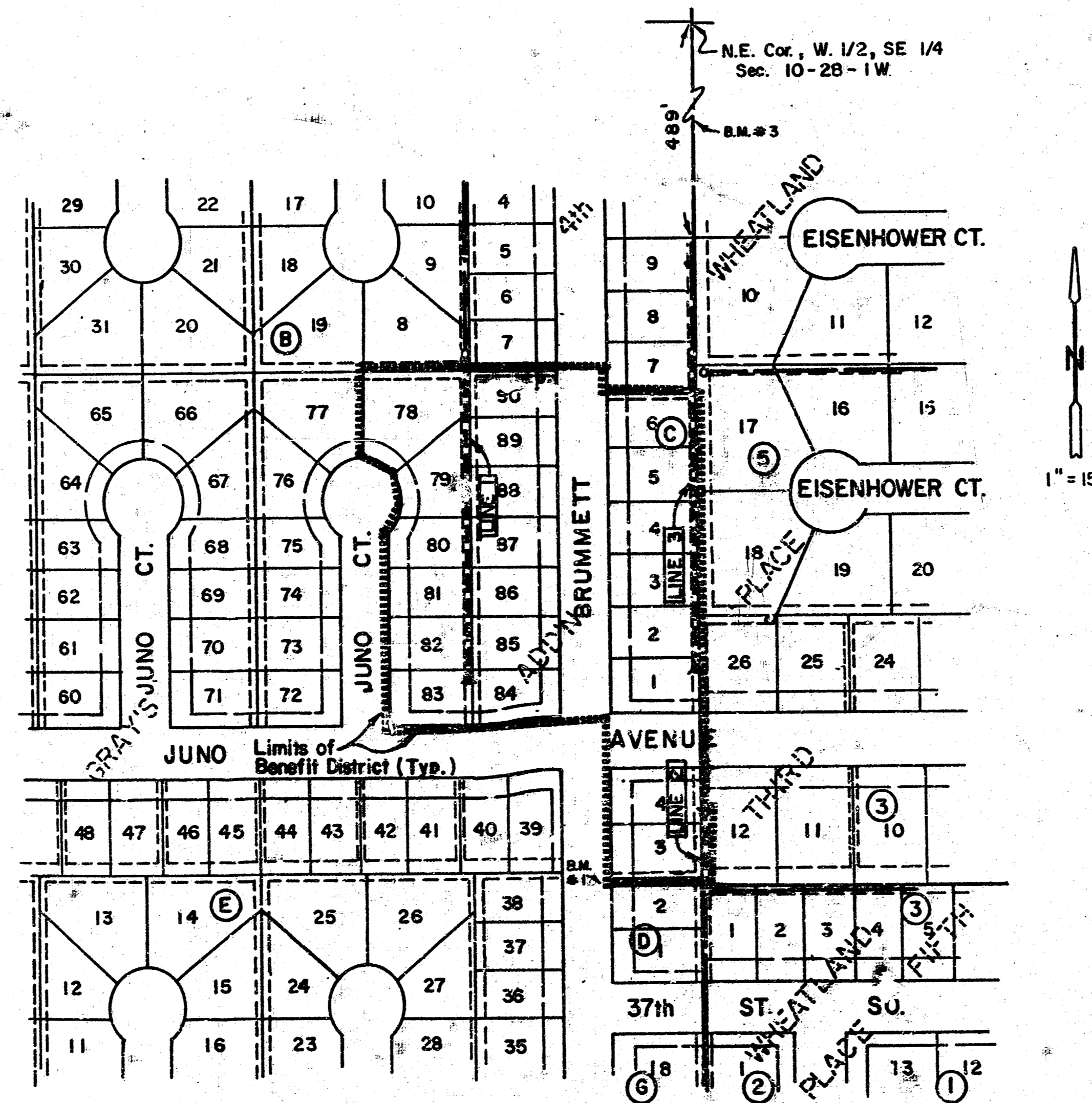
NOTES

1. CONTRACTOR WILL BE REQUIRED TO PROVIDE A MINIMUM ADVANCE NOTICE OF TWENTY-FOUR (24) HOURS TO UTILITY COMPANIES PRIOR TO STARTING ANY EXCAVATION AS FOLLOWS:

KANSAS ONE-CALL	687-2470
-----------------	----------

THE CONTRACTOR MUST NOTIFY THE FOLLOWING IN CASE OF AN EMERGENCY:

CABLEVISION	262-4270 OR 263-2061
K.P. & L. GAS SERVICE COMPANY	263-7511
KANSAS GAS & ELECTRIC	263-1141
ARKLA GAS COMPANY	942-8350 OR 263-8161
SOUTHWESTERN BELL TELEPHONE COMPANY	1-571-2611
CITY OF WICHITA WATER DEPARTMENT	268-4908
CITY OF WICHITA SEMER MAINTENANCE	268-4071
2. THE CONTRACTOR SHALL BE RESPONSIBLE FOR PRESERVING PROPERTY IRONS. THE CONTRACTOR WILL BE REQUIRED TO RE-ESTABLISH ANY PROPERTY IRONS WHICH ARE DAMAGED OR DESTROYED BY HIS CONSTRUCTION OPERATIONS. SUCH IRONS SHALL BE RE-ESTABLISHED BY A LICENSED LAND SURVEYOR IN ACCORDANCE WITH STATE LAWS.
3. UNLESS OTHERWISE SPECIFIED ON THE PLANS, MANHOLES MAY BE TYPE "P", "C" OR "M" MANHOLES. MANHOLES SHALL BE CONSTRUCTED IN ACCORDANCE WITH THE STANDARD SPECIFICATIONS AND THE STANDARD DETAIL DRAWINGS.
4. TRAFFIC WILL NOT BE AFFECTED IN THIS AREA OF CONSTRUCTION.
5. CONTRACTOR SHALL PROVIDE POSITIVE DRAINAGE AWAY FROM ALL MANHOLE COVERS.
6. CONTRACTOR SHALL GRADE THE SANITARY SEWER ALIGNMENT TO THE PROFILE AND ELEVATION SHOWN ON THE EASEMENT GRADING PLAN. ALL COSTS FOR GRADING SHALL BE SUBSIDIARY TO THE PROJECT.

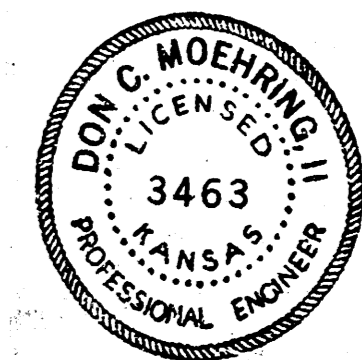


Sheet No.	Description
1	Cover Sheet
2	Plan & Profile - Lines 1, 2 and 3
3	Easement Grading Plan/Plat

BENCHMARKS-

1. Chiseled "□" on Top of Curb Opposite the N.W. Cor. Lot 2, Block "D", Gray's 4th Add. Elev. = 121.75 City Datum.
2. "V" Notch on conc. slab of lift station at SE Cor Res. "A", Gray's 4th Add. Elev. = 117.44 City Datum.
3. Chiseled "□" on Top of Curb at SW Cor of Curb Inlet, North Side 35th St. S. at E.L. Gray's 4th Add. Elev. = 115.57 City Datum.

*Build Per Plan
RDL
8-90*

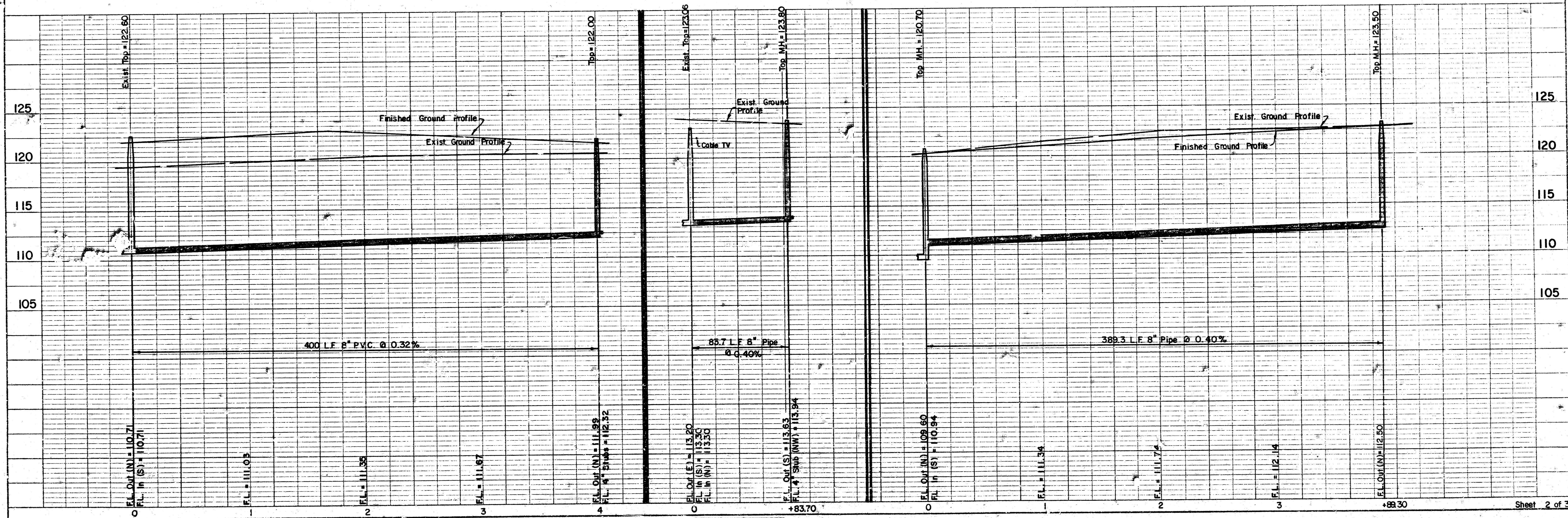
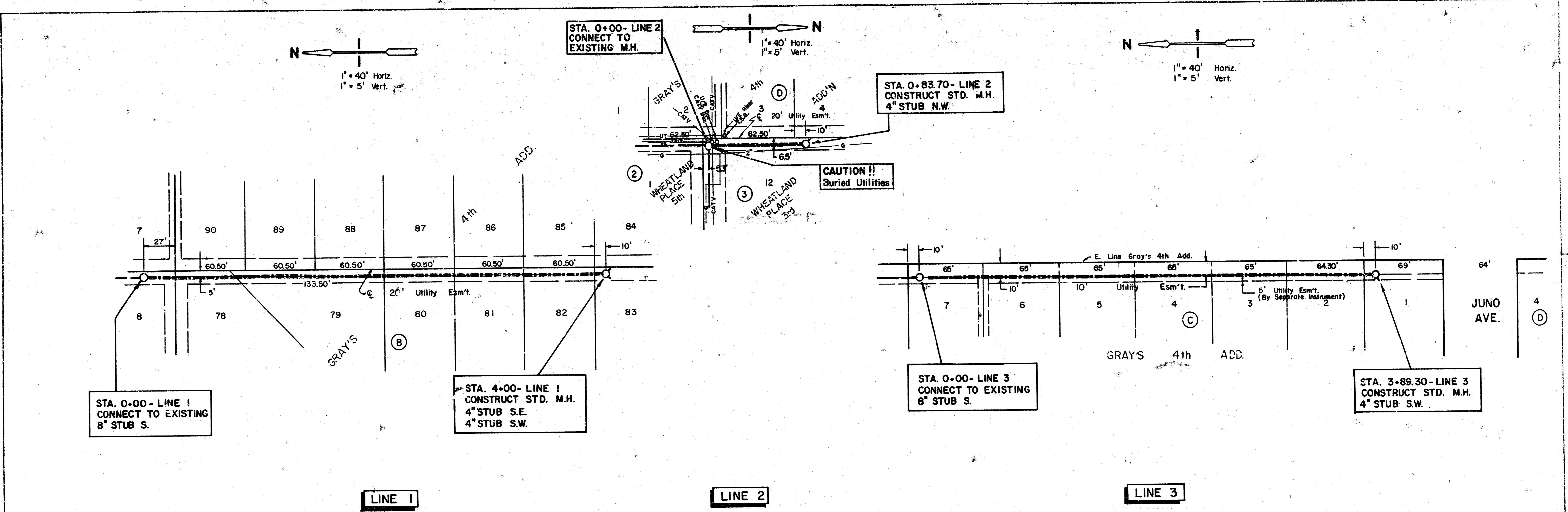


**MOEHRING & ASSOCIATES
CONSULTING ENGINEERS
WICHITA**

**FILMED FROM THE BEST
AVAILABLE COPY**

PLAN
 DRAWN BY: []
 CHECKED BY: []
 DATE: []
 NO. []

PROFILE
 DRAWN BY: []
 CHECKED BY: []
 DATE: []
 NO. []

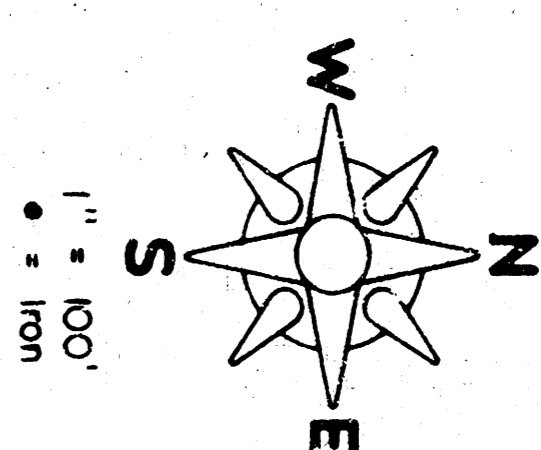
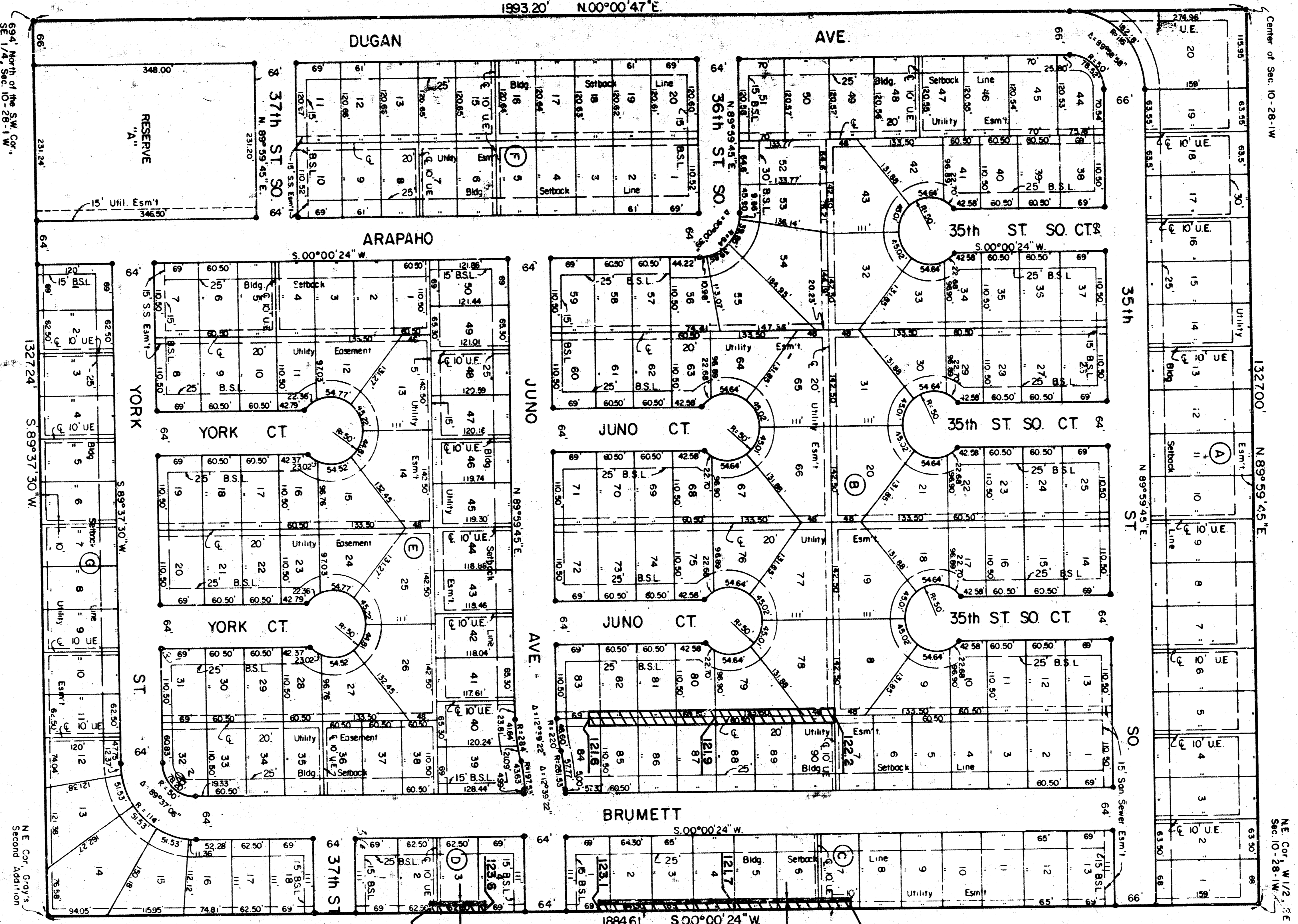


FILMED FROM THE BEST AVAILABLE COPY

GRAY'S 4TH ADDITION

SEDGWICK COUNTY, KANSAS

EASEMENT GRADING PLAN



This plat of "GRAY'S 4TH ADDITION" has been submitted to and approved by the Wichita-Sedgwick County Metropolitan Area Planning Commission.
 Dated this 14th day of April, 1988.
 WICHITA-SEDGWICK COUNTY METROPOLITAN AREA PLANNING COMMISSION

Elton Parsons Chairman
Martin St. Knout Secretary

This plat has been approved and all dedications shown hereon, if any, accepted by the Board of Commissioners of Sedgwick County, Kansas, this 14th day of April, 1988.

Stefano Krawchen Deputy
 DATE FILED
 This plat has been approved and all dedications shown hereon, if any, accepted by the Board of Commissioners of Sedgwick County, Kansas, this 14th day of April, 1988.

Mark F. Schneider Chairman
Billy J. Gray Chairman Pro-Tem
Edward A. Hentzen Commissioner
Tom Scott Commissioner

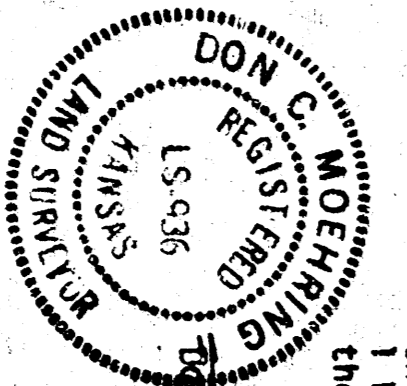
Bernard A. Hentzen Commissioner
 Attest: *Tom Wright* County Clerk
 STATE OF KANSAS, COUNTY OF SEDGWICK, SS:
 This is to certify that this instrument was filed for record in the Register of Deeds Office at 10:15 A.M. on the 20TH day of MAY, 1988.

Felt Kettler Register of Deeds
Patricia J. Williams Deputy
 Entered on transfer record this 20th day of May, 1988.

Don Wright County Clerk

Don Wright County Clerk

#948051



STATE OF KANSAS, COUNTY OF SEDGWICK, SS:
 I, Don C. Moehring II, a Registered Land Surveyor in said State and County, do hereby certify that I have surveyed and platted the above described property, and that the same is in accordance with the laws of the State of Kansas. The streets and a Reserve, to be known as "GRAY'S 4TH ADDITION", Sedgwick County, Kansas, are hereby dedicated to and for the use of the public as indicated on the accompanying plat, and are hereby granted. Reserve "A" is hereby designated for drainage purposes. Reserve "A" is to be owned and maintained by a home owners association.
 GRAY CONSTRUCTION, INC.
Billy J. Gray President
Kenneth M. Clark Secretary

STATE OF KANSAS, COUNTY OF SEDGWICK, SS:
 Be it remembered that this 14th day of April, 1988, before me, a Notary Public in and for said State and County, came Gray Construction, Inc. by Billy J. Gray, President and Kenneth M. Gray, Secretary, on behalf of the Corporation, to me personally, writing and duly acknowledged the execution of the same on behalf of and as the act and deed of said Corporation. In testimony whereof I have hereunto set my hand and affixed my notarial seal the day and year above written.

Don Wright Notary Public
 My Commission Expires 20 1992
 My Commission Expires on the above described property, do hereby consent to the plat of "GRAY'S 4TH ADDITION".

Kenneth M. Clark President
 STATE OF KANSAS, COUNTY OF SEDGWICK, SS:
 Be it remembered that this 14th day of April, 1988, before me, a Notary Public in and for said State and County, came Bank of Mid America, Inc. by Kenneth M. Clark, President, on behalf of the Bank, to me personally known to be the same person who executed the foregoing instrument of writing and duly acknowledged the execution thereof. In testimony whereof I have hereunto set my hand and affixed my notarial seal the day and year above written.

Don Wright Notary Public
 My Commission Expires 20 1992
 My Commission Expires on the above described property, do hereby consent to the plat of "GRAY'S 4TH ADDITION".

Kenneth M. Clark President

20.00

FILMED FROM THE BEST AVAILABLE COPY....