

SANITARY SEWER LAT. 269, SOUTHWEST INTERCEPTOR

TO SERVE PART OF

GRAY'S 4th ADDITION SEDGWICK COUNTY, KANSAS

CITY OF WICHITA, KANSAS

M.E. LINDEBAK CITY ENGINEER

CITY PROJECT NO. 468 - 76 - 245 - 81831 - 000-000-001
INDEX NO. 740845

JULY , 1991

IMPROVEMENT DISTRICT DESCRIPTION

LOTS 11 THROUGH 20 INCLUSIVE, BLOCK "A"
LOTS 26 THROUGH 30 INCLUSIVE, LOTS 33
THROUGH 42 INCLUSIVE, AND LOTS 44
THROUGH 49 INCLUSIVE, BLOCK "B."

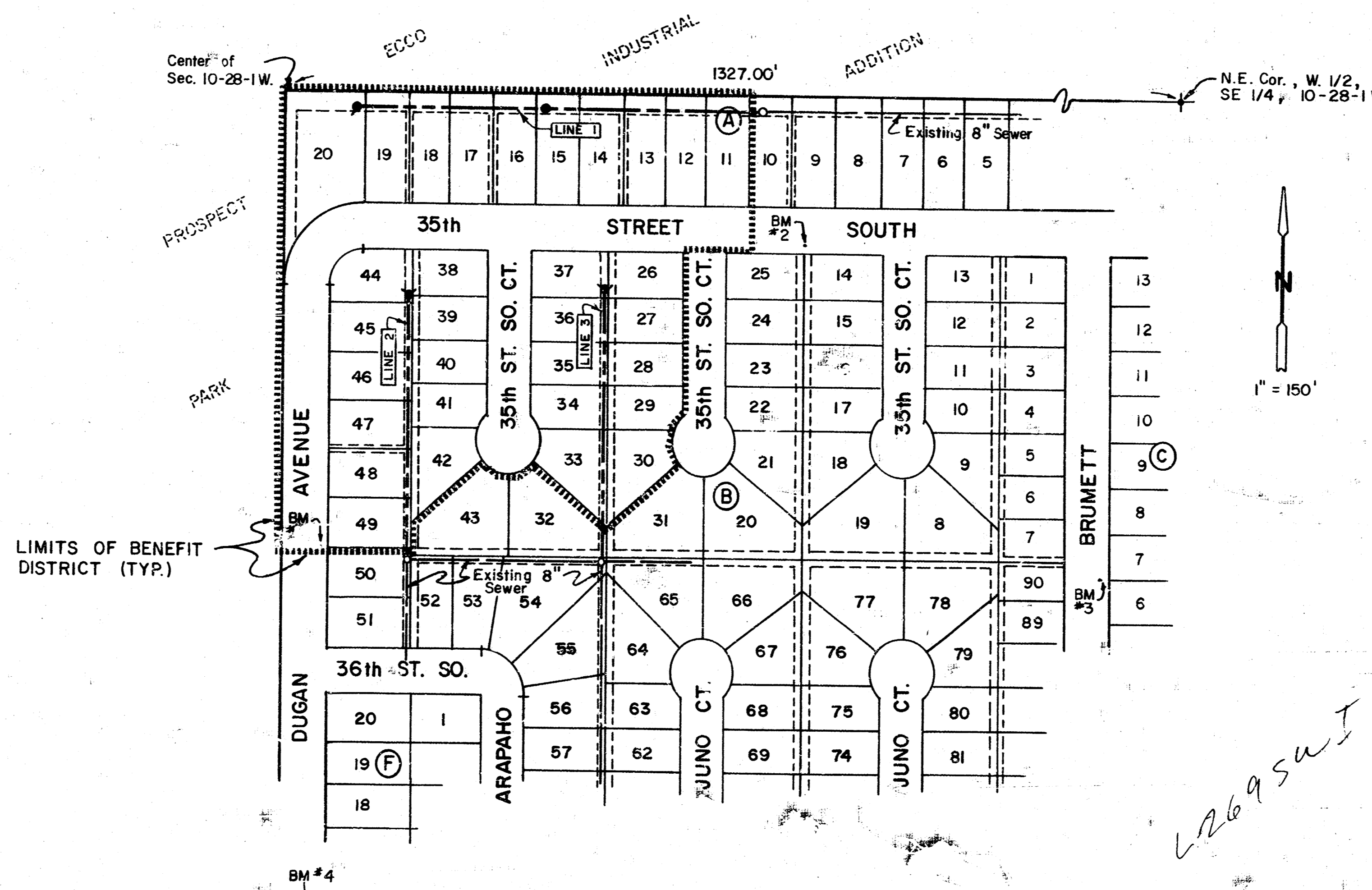
NOTES

1. CONTRACTOR WILL BE REQUIRED TO PROVIDE A MINIMUM ADVANCE NOTICE OF TWENTY-FOUR (24) HOURS TO UTILITY COMPANIES PRIOR TO STARTING ANY EXCAVATION AS FOLLOWS:

KANSAS ONE-CALL	687-2470
-----------------	----------

THE CONTRACTOR MUST NOTIFY THE FOLLOWING IN CASE OF AN EMERGENCY:

CABLEVISION	262-4270 OR 263-2061
K. P. & L. GAS SERVICE COMPANY	263-7511
KANSAS GAS & ELECTRIC	263-1141
ARKLA GAS COMPANY	942-8350 OR 263-8161
SOUTHWESTERN BELL TELEPHONE COMPANY	1-571-2611
CITY OF WICHITA WATER DEPARTMENT	268-1908
CITY OF WICHITA SEWER MAINTENANCE	268-4371
2. THE CONTRACTOR SHALL BE RESPONSIBLE FOR PRESERVING PROPERTY IRONS. THE CONTRACTOR WILL BE REQUIRED TO RE-ESTABLISH ANY PROPERTY IRONS WHICH ARE DAMAGED OR DESTROYED BY HIS CONSTRUCTION OPERATIONS. SUCH IRONS SHALL BE RE-ESTABLISHED BY A LICENSED LAND SURVEYOR IN ACCORDANCE WITH STATE LAWS.
3. UNLESS OTHERWISE SPECIFIED ON THE PLANS, MANHOLES MAY BE TYPE "P", "C" OR "D" MANHOLES. MANHOLES SHALL BE CONSTRUCTED IN ACCORDANCE WITH THE STANDARD SPECIFICATIONS AND THE STANDARD DETAIL DRAWINGS.
4. TRAFFIC WILL NOT BE AFFECTED IN THIS AREA OF CONSTRUCTION.
5. CONTRACTOR SHALL PROVIDE POSITIVE DRAINAGE AWAY FROM ALL MANHOLE COVERS.
6. CONTRACTOR SHALL GRADE THE SANITARY SEWER ALIGNMENT TO THE PROFILE AND ELEVATION SHOWN ON THE EASEMENT GRADING PLAN. ALL COSTS FOR GRADING SHALL BE SUBSIDIARY TO THE PROJECT.

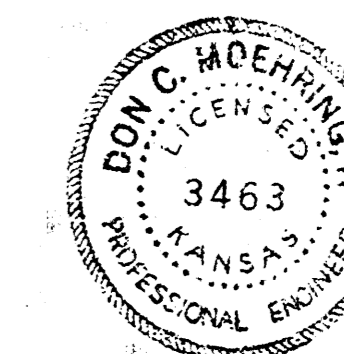


INDEX

Sheet No.	Description
1	Cover Sheet
2	Plan & Profile - Line 1
3	Plan & Profile - Lines 2 and 3
4	Easement Grading Plan / Plat

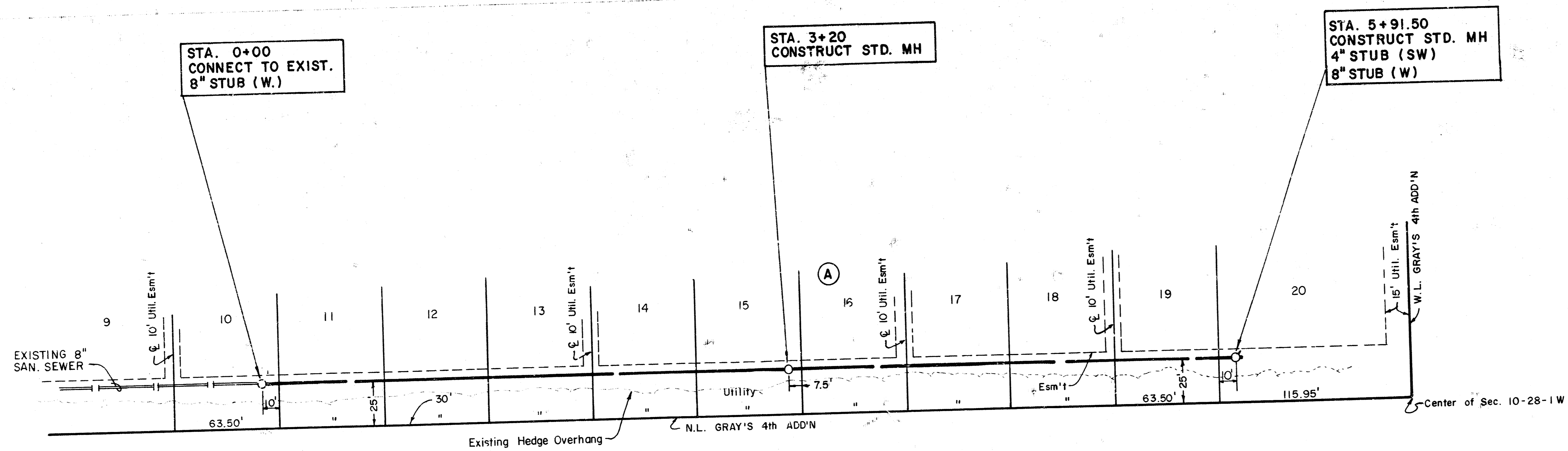
BENCHMARKS

1. Chiseled "□" on T.C., E. Side Dugan opposite NW Cor. Lot 50, Blk. "B".
Elev. = 120.41 City Datum
2. Chiseled "□" on T.C., S. Side 35th St. So. opposite Lot 25, Blk. "B".
Elev. = 118.72 City Datum
3. Chiseled "□" on T.C., E. Side Brumett opposite Lot 7, Blk. "C".
Elev. = 119.92 City Datum
4. Chiseled "□" on T.C., E. Side Dugan, 487' S. of C.L. 38th St. So.
Elev. = 119.32 City Datum



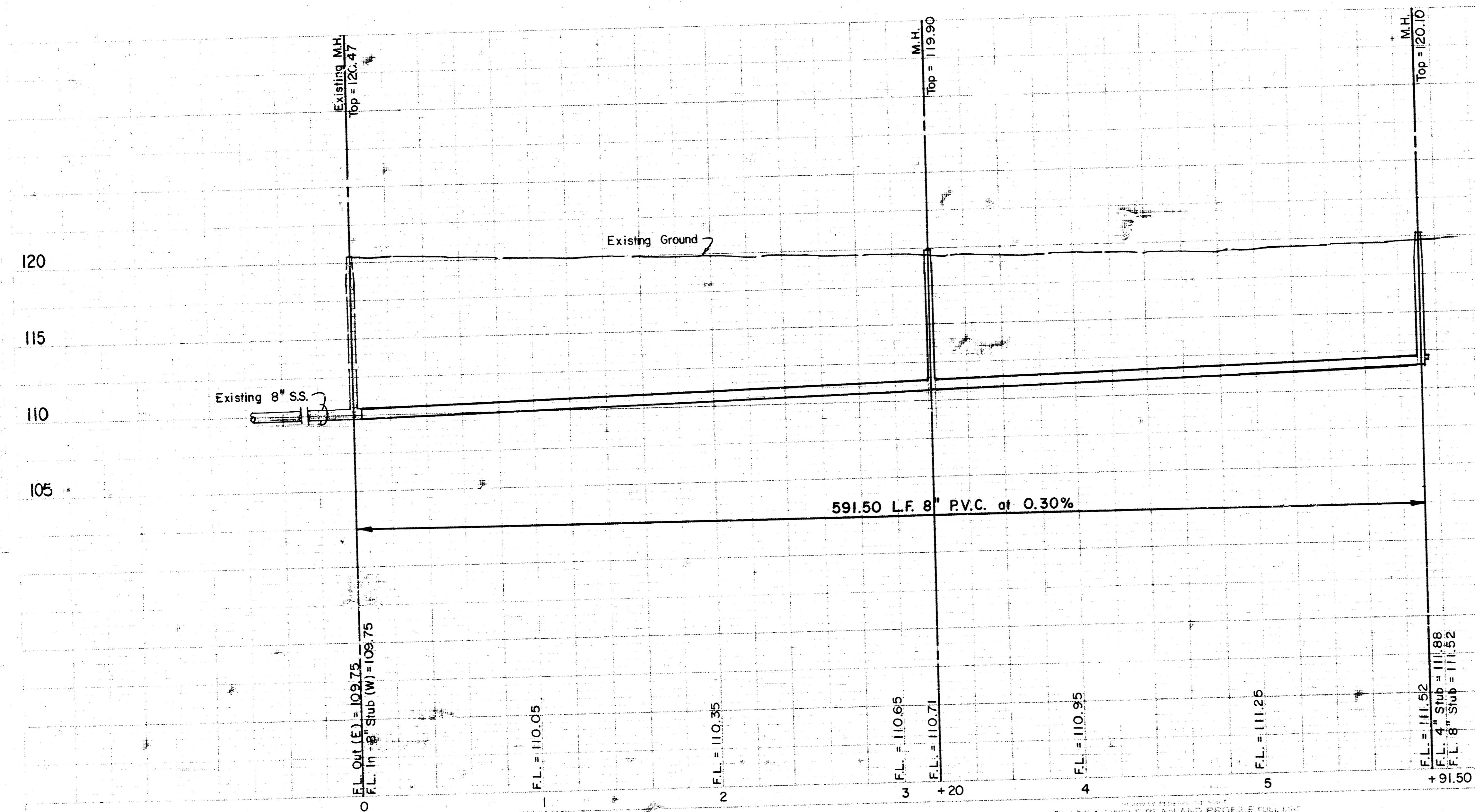
MOEHRING & ASSOCIATES
CONSULTING ENGINEERS
WICHITA

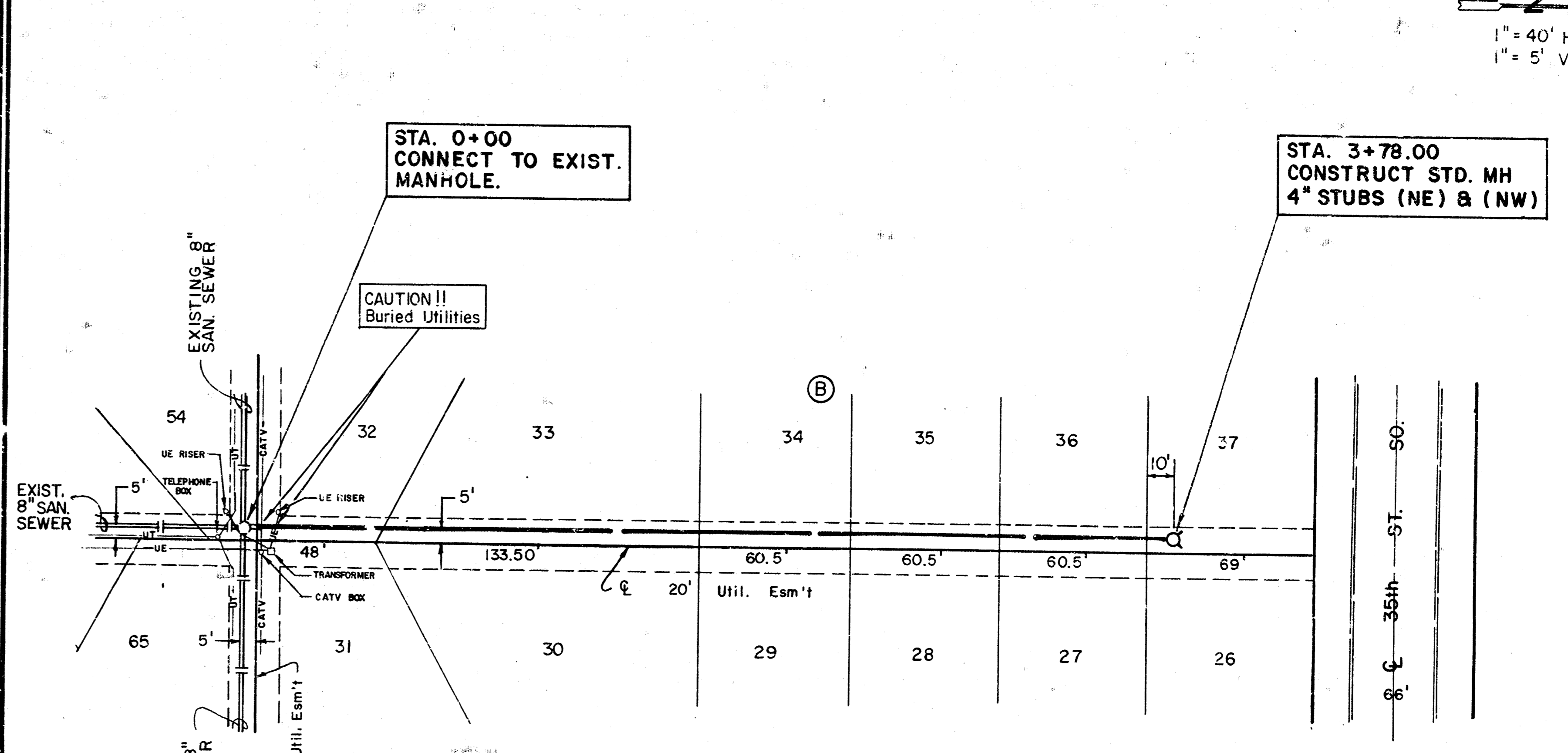
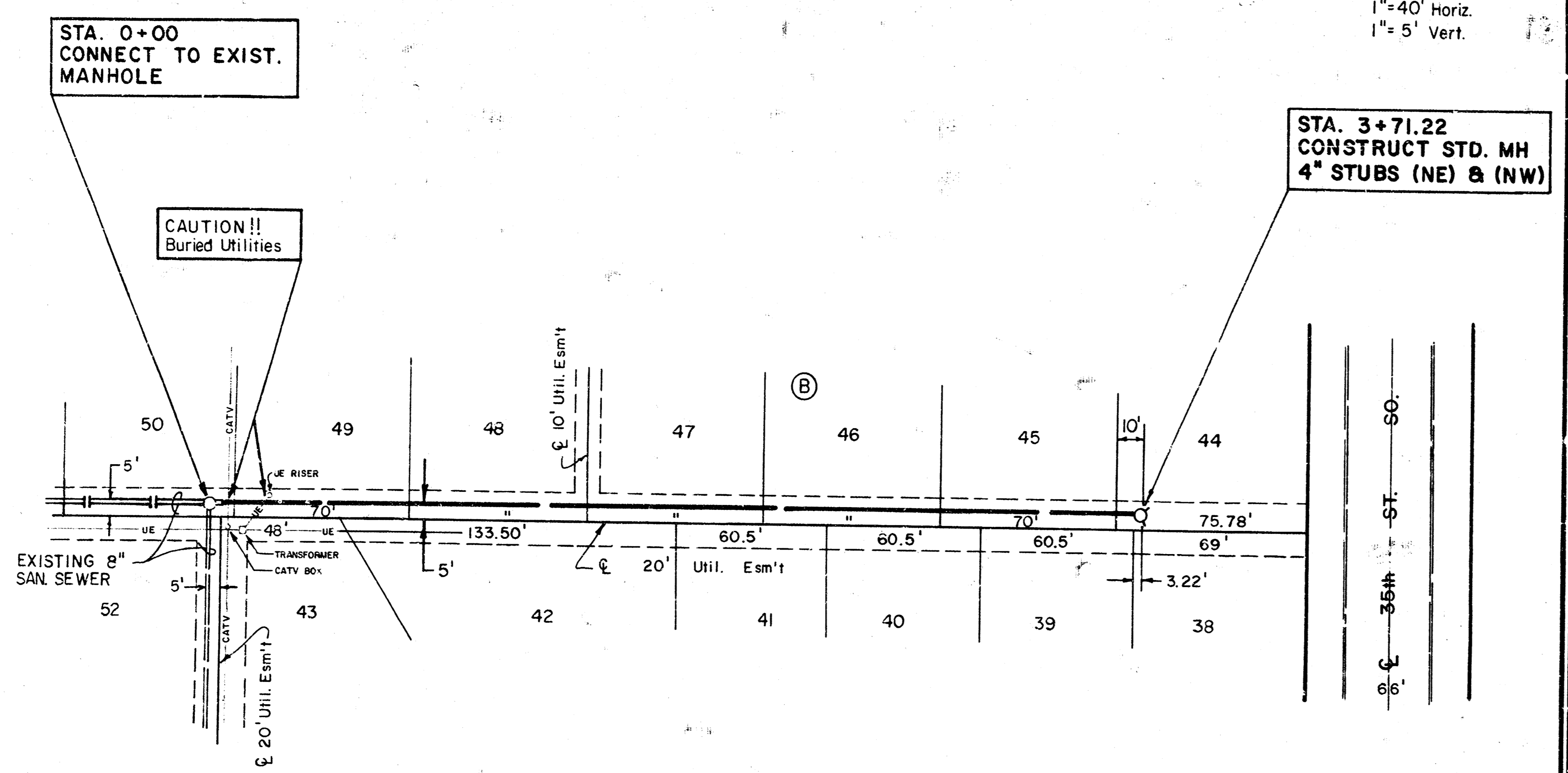
①



1" = 40' Horiz.
1" = 5' Vert.

LINE 1





LINE 2

LINE 3

— LEGEND —
 UE = Underground Electric
 UT = Underground Telephone
 CATV = Cable Television

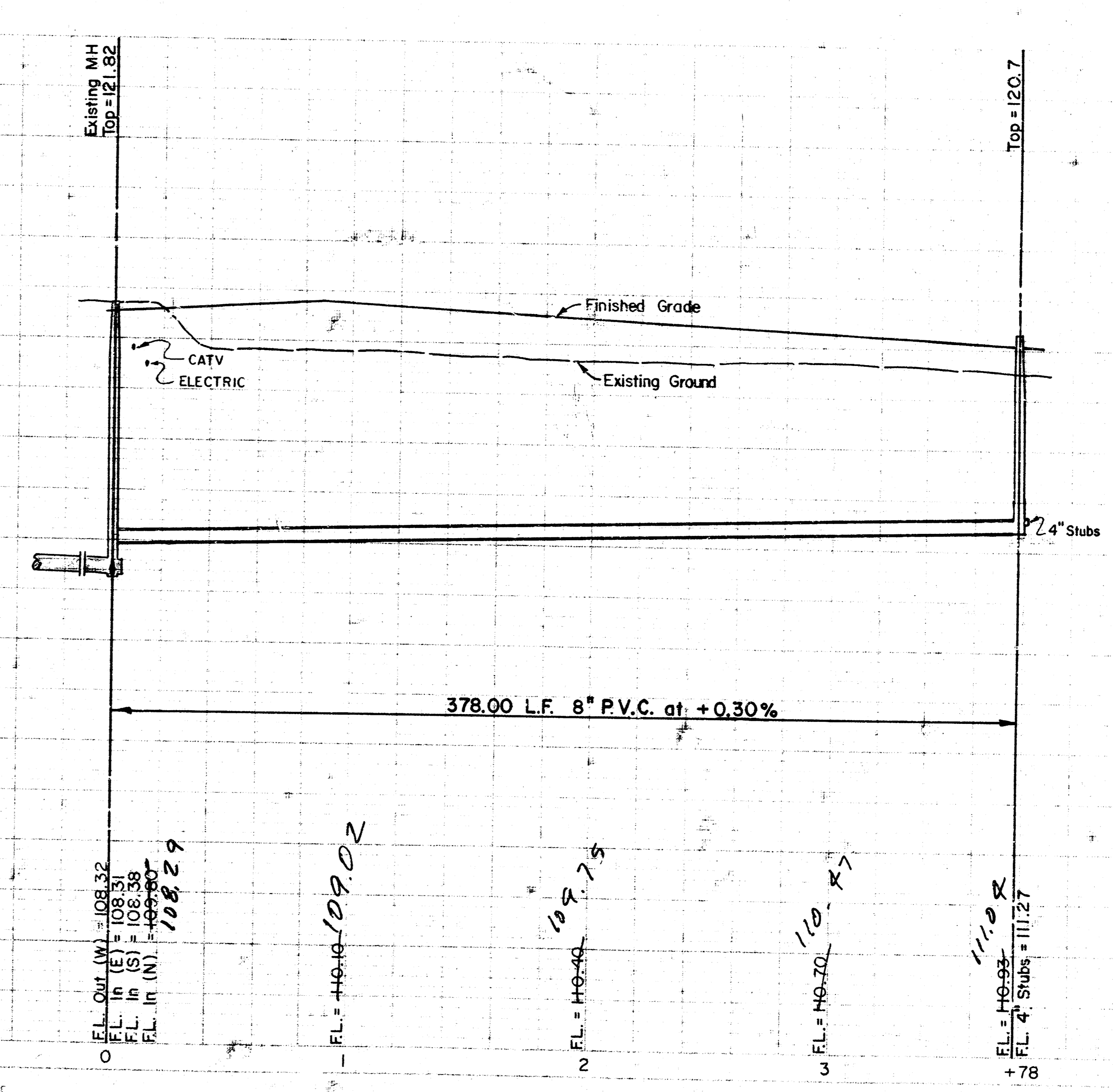
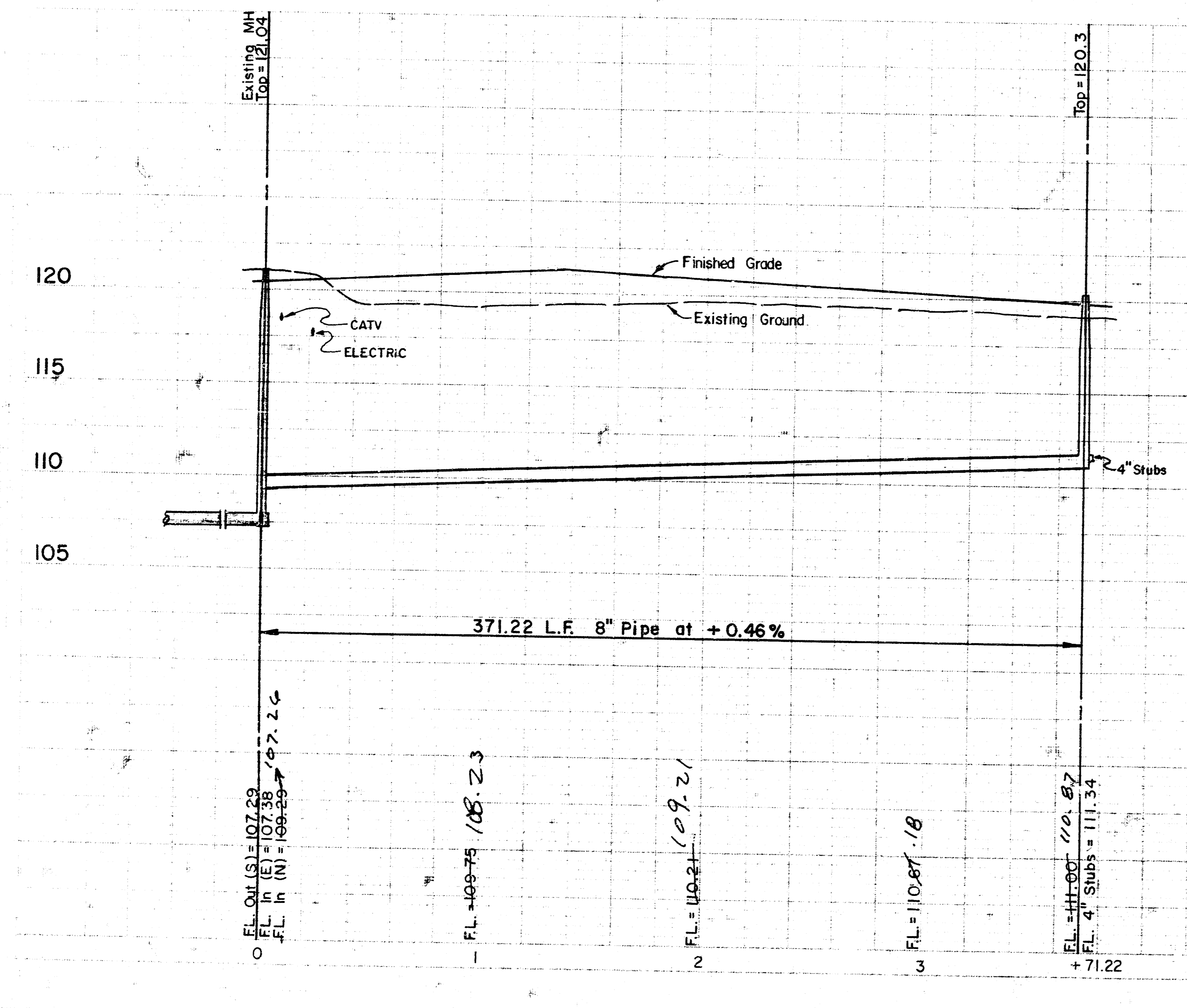
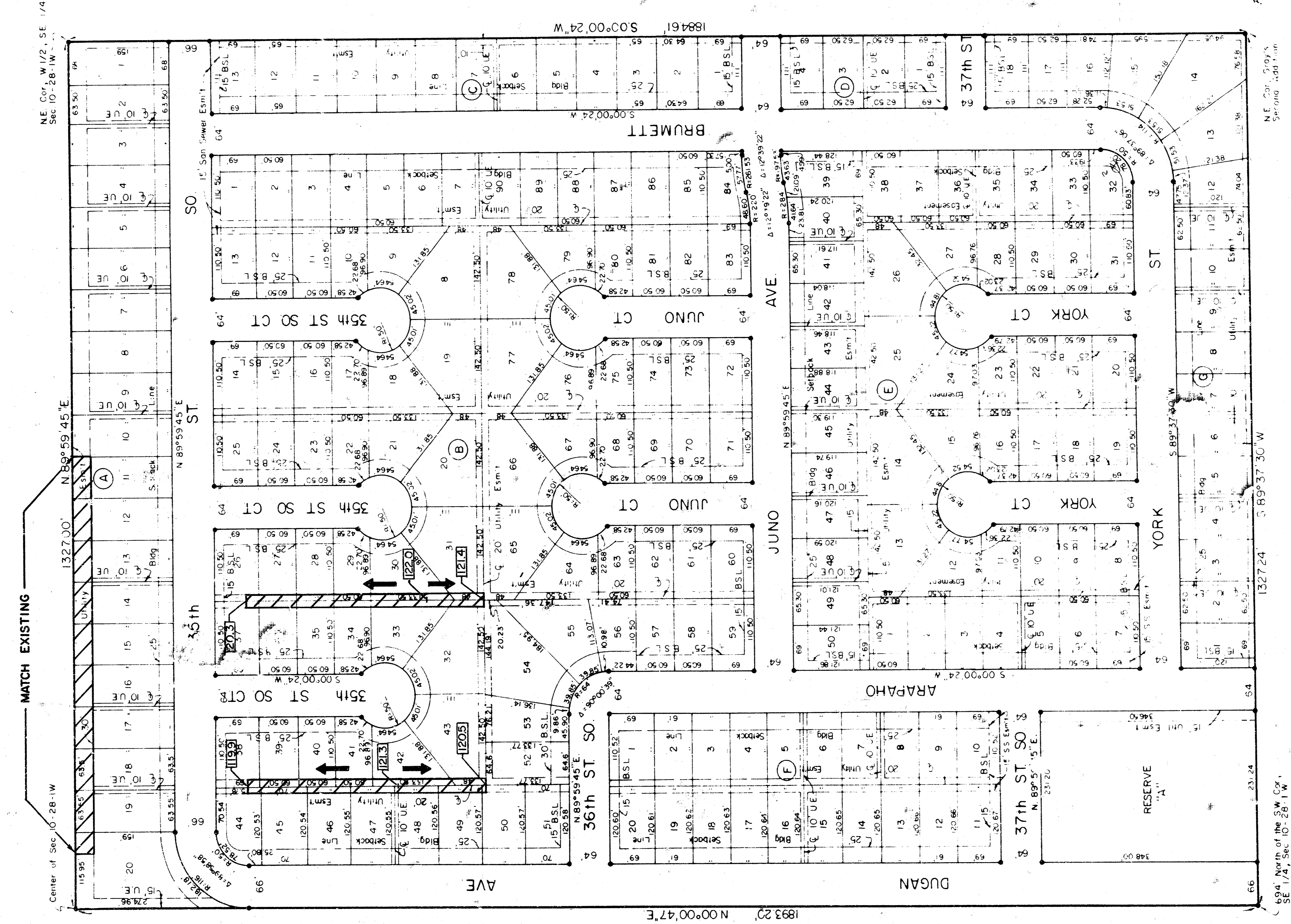


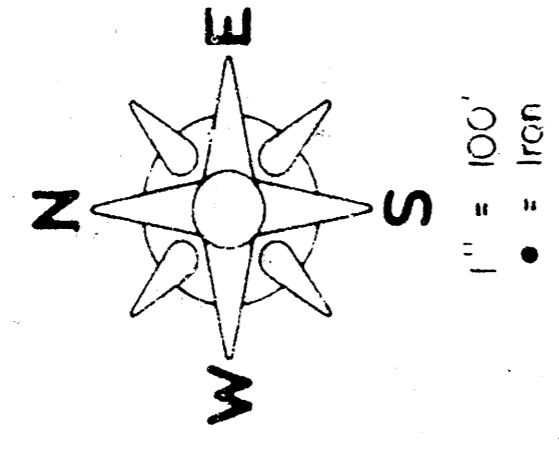
PLATE SINGLE PLAN AND PROFILE

GRAY'S 4TH ADDITION SEDDWICK COUNTY, KANSAS

EASEMENT GRADING PLAN



D 8-32



This plat of "GRAY'S 4TH ADDITION" has been submitted to and approved by the Wichita-Sedgewick County Metropolitan Area Planning Commission.

Dated this 14th day of May, 1988.

WICHITA-SEDDWICK COUNTY METROPOLITAN AREA PLANNING COMMISSION
Eilon Parsons, Chairman

Secretary
Marvin Trout

This plat has been approved and all dedications shown hereon, if any, accepted by the Board of Commissioners of Sedgewick County, Kansas, this 14th day of May, 1988.

State of Kansas
Sylvia Kamen
Deputy County Clerk

Mark T. Schneider, Chairman

Billy J. Gray, Chairman Pro-tem

Commissioner

County Clerk

Attest: *Don Wright*, Register of Deeds

STATE OF KANSAS, COUNTY OF SEDGWICK, SS:
This is to certify that this instrument was filed for record in the Register of Deeds Office at 10:15 AM, on the 14th day of May, 1988.

Entered on transfer record this 14th day of May, 1988.

STATE OF KANSAS, COUNTY OF SEDGWICK, SS:
I, Don C. Meanning II, a Registered Land Surveyor in said State and County, do hereby certify that I have surveyed and platted "GRAY'S 4TH ADDITION" in Sedgewick County, Kansas, in accordance with the accompanying plat and described as being the West 1/2 of the Southeast 1/4 of Section 10, Township 28 South, Range 1 West of the 6th P.M., Sedgewick County, Kansas, except the South 694.0 thereof.

Don C. Meanning II, Surveyor

STATE OF KANSAS, COUNTY OF SEDGWICK, SS:
Be it remembered that this 14th day of May, 1988, I, Don C. Meanning II, a Registered Land Surveyor in said State and County, Lane Gray, Construction, Inc., by Billy J. Gray, President and Dennis M. Gray, Secretary, on behalf of the Corporation, to me personally known to be the same persons who executed the foregoing instrument of and as the act and deed of said Corporation, in testimony whereof I have hereunto set my hand and affixed my notarial seal the day and year above written.

Don C. Meanning II, Notary Public

My Commission Expires: 2-27-1991

By Commission Expires: 2-27-1991

By Commission Expires: 2-27-1991

By Commission Expires: 2-27-1991

By Commission Expires: 2-27-1991

Know all men by these presents that we the undersigned, property owners of the land as above set forth, for and in behalf of our selves, our heirs, assigns, executors, administrators, and assigns, do hereby dedicate, reserve, and set apart to the public, the streets and a reserve, to be known as "GRAY'S 4TH ADDITION", Sedgewick County, Kansas. The Streets are hereby dedicated to and for the use of the public. Easements for the construction and maintenance of public utilities, easements and other interests, including but not limited to, easements, rights, and interests, are reserved for the use of the public. The reserve is to be owned and maintained by a Home Owners Association.

GRAY CONSTRUCTION, INC.

Billy J. Gray, President

Dennis M. Gray, Secretary

Don C. Meanning II, Surveyor