

SANITARY SEWER LIFT STATION AND FORCE MAIN

LATERALS 276, 277, 278 and 279

SOUTHWEST INTERCEPTOR

CITY OF WICHITA, KANSAS

M.E. LINDEBAK CITY ENGINEER

CITY PROJECT NO. 468 - 76 - 245 - 81927 - 000 - 000 - 001
INDEX NO. 608075

APRIL, 1989

IMPROVEMENT DISTRICT DESCRIPTION

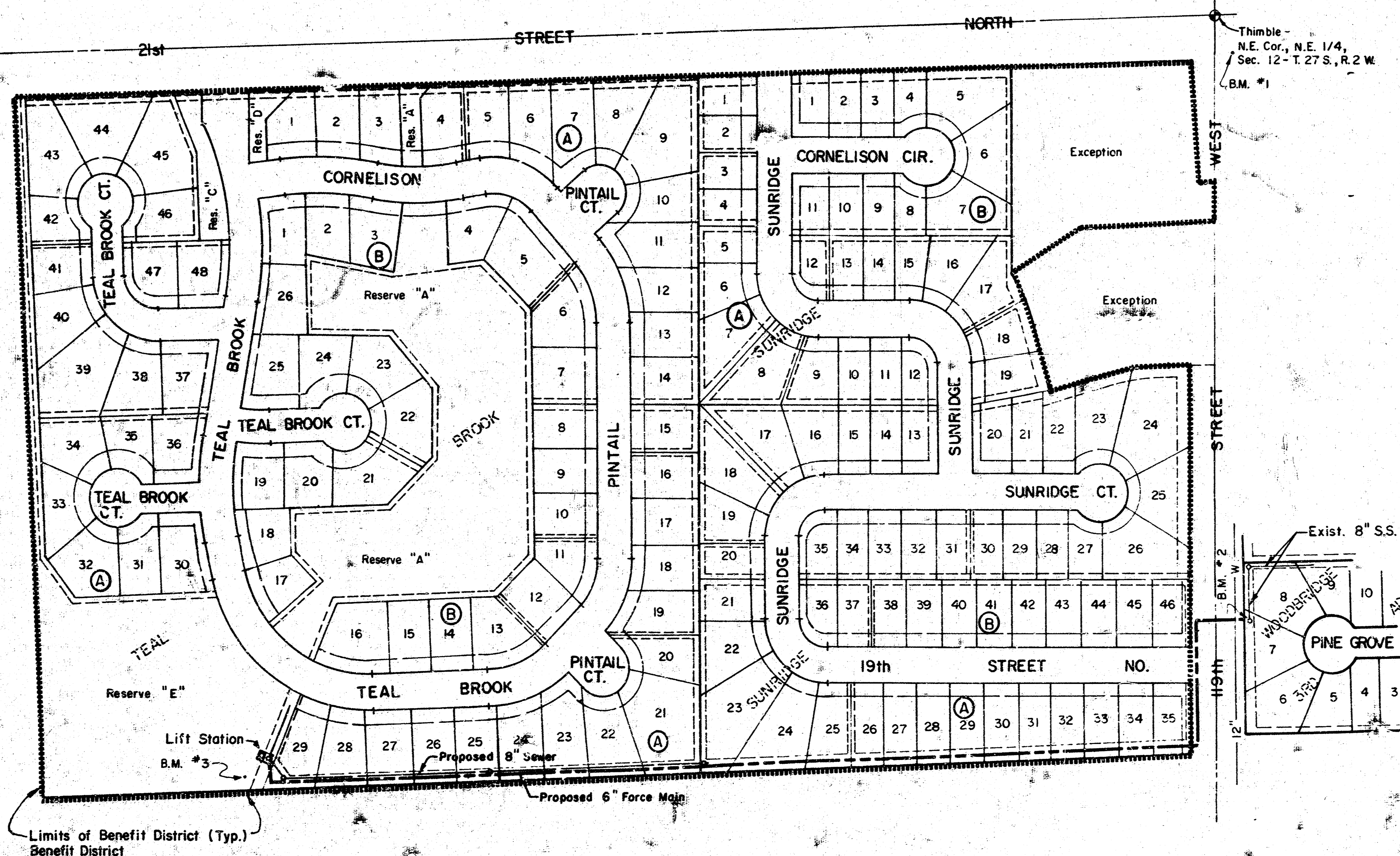
LOTS 1 THROUGH 35 INCLUSIVE, BLOCK A, AND
LOTS 1 THROUGH 46 INCLUSIVE, BLOCK B, IN
SUNRIDGE ADDITION.

LOTS 1 THROUGH 48 INCLUSIVE, BLOCK A, AND
LOTS 1 THROUGH 26 INCLUSIVE, BLOCK B, IN
TEAL BROOK ESTATES.

AN UNPLATTED TRACT IN THE N. 1/2 OF THE
NE 1/4, SEC. 12, T.27 S., R.2 W. OF THE 6TH
P.M., SEDGWICK COUNTY, KANSAS.

NOTES:

- CONTRACTOR WILL BE REQUIRED TO PROVIDE A MINIMUM ADVANCE NOTICE OF TWENTY-FOUR (24) HOURS TO UTILITY COMPANIES PRIOR TO STARTING ANY EXCAVATION AS FOLLOWS:
KANSAS ONE-CALL 1-800-344-7233
THE CONTRACTOR MUST NOTIFY THE FOLLOWING IN CASE OF AN EMERGENCY:
CABLEVISION 262-4270 OR 263-2061
K.P. & L. GAS SERVICE COMPANY 263-7511
KANSAS GAS & ELECTRIC 264-1141
ARJLA GAS COMPANY 942-8350 OR 263-8161
SOUTHWESTERN BELL TELEPHONE COMPANY 1-571-2611
CITY OF WICHITA WATER DEPARTMENT 268-4908
CITY OF WICHITA SEWER MAINTENANCE 268-4071
- INTERURBAN TRAFFIC GENERATED OUTSIDE THE PROJECT AREA IS TO BE CARRIED THROUGH CONSTRUCTION. LOCAL BUSINESS OR APARTMENT TRAFFIC GENERATED WITHIN THE PROJECT AREA IS TO BE CARRIED THROUGH CONSTRUCTION.
- UNDERGROUND UTILITY SERVICE LINES AND OVERHEAD UTILITY POLE LINES ARE TO BE ADJUSTED AS NECESSARY BY OTHERS PRIOR TO CONSTRUCTION UNLESS THE PLANS SPECIFICALLY CALL FOR THEIR ADJUSTMENT BY THE CONTRACTOR. EXISTING UTILITIES AND THEIR LOCATION, AS SHOWN ON THE PLANS, REPRESENT THE BEST INFORMATION OBTAINABLE FOR DESIGN. THE CONTRACTOR WILL BE REQUIRED TO WORK AROUND EXISTING UTILITIES WITHIN THE RIGHT-OF-WAY WHICH DO NOT CONFLICT WITH PROPOSED CONSTRUCTION.
- RUBBLE FROM THE REMOVAL OF MISCELLANEOUS STRUCTURES AND EXCESS EXCAVATION WHICH IS TO BE WASTED SHALL BE DISPOSED OF ON SITES TO BE PROVIDED BY THE CONTRACTOR. THESE SITES SHALL BE APPROVED BY THE ENGINEER AS TO SUITABILITY, APPEARANCE AND SITE LOCATION. LOCATIONS THAT, IN THE OPINION OF THE ENGINEER, WILL LEAVE AN UNSIGHTLY APPEARANCE WILL NOT BE APPROVED.
- THE SANITARY SEWER AND FORCE MAIN SHALL BE CONSTRUCTED ON THE ALIGNMENT SHOWN BY THE PLANS. HEDGE, TREES AND SHRUBS IN EASEMENTS OR PUBLIC RIGHT-OF-WAY WHICH ARE IN DIRECT CONFLICT WITH PROPOSED NEW CONSTRUCTION SHALL BE REMOVED BY THE CONTRACTOR WITH THE ENGINEER'S APPROVAL. TREES AND SHRUBS WHICH ARE NOT IN DIRECT CONFLICT WITH PROPOSED NEW CONSTRUCTION SHALL BE SAVED AND PROTECTED FROM DAMAGE. THE COST FOR ANY NECESSARY TREE REMOVAL, TRIMMING, CLEARING AND GRUBBING SHALL BE CONSIDERED SUBSIDIARY AND NOT PAID FOR SEPARATELY.
- THE CONTRACTOR SHALL BE RESPONSIBLE FOR PRESERVING PROPERTY IRONS. THE CONTRACTOR WILL BE REQUIRED TO RE-ESTABLISH ANY PROPERTY IRONS WHICH ARE DAMAGED OR DESTROYED BY HIS CONSTRUCTION OPERATIONS. SUCH IRONS SHALL BE RE-ESTABLISHED BY A LICENSED LAND SURVEYOR IN ACCORDANCE WITH STATE LAWS.
- CONTRACTOR TO INSTALL GRAVITY SEWER ALONG THE SOUTH LINE OF LOTS 21-29, BLOCK "A", TEAL BROOK ESTATES, PRIOR TO INSTALLATION OF FORCE MAIN.
- THE LUMP SUM PRICE BID FOR FURNISHING AND INSTALLING LIFT STATION WITH STANDBY POWER AND MISCELLANEOUS APPURTENANCES COMPLETE IN PLACE SHALL INCLUDE ALL COSTS FOR FURNISHING AND INSTALLING THE LIFT STATION AND STANDBY POWER MODULE AS INDICATED ON THE SITE PLAN COMPLETE IN PLACE AND IN OPERATION. SUCH LUMP SUM BID SHALL INCLUDE THE COST OF CONSTRUCTING AND/OR INSTALLING COMPACTED FILL CONCRETE PAD, ACCESS DRIVE, ELECTRICAL PEDESTAL, ELECTRICAL CONDUIT, ELECTRICAL WIRING, DISCONNECT SWITCH, ELECTRICAL POWER SUPPLY, NATURAL GAS FUEL SUPPLY, FINISHED GRADING AND ANY OTHER INCIDENTALS NECESSARY TO COMPLETE THE WORK.
- CONTRACTOR SHALL FURNISH A METER RACK TO SUPPORT THE DISCONNECT AND METER ENCLOSURES IN A LOCATION APPROVED BY THE ENGINEER.
- A 2" CONDUIT SHALL BE INSTALLED UNDERGROUND FROM THE DISCONNECT SWITCH LOCATED ON THE ELECTRICAL SERVICE PEDESTAL TO THE LIFT STATION MODULE AND FROM THE LIFT STATION MODULE TO THE STANDBY POWER MODULE AND FROM THE STANDBY POWER MODULE TO THE DISCONNECT SWITCH LOCATED ON THE ELECTRICAL SERVICE PEDESTAL. A 3/4" CONDUIT SHALL BE INSTALLED UNDERGROUND BETWEEN THE LIFT STATION MODULE AND THE ELECTRICAL SERVICE PEDESTAL TO FACILITATE CONNECTION OF THE ALARM SYSTEM BY OTHERS. THE ELECTRICAL POWER SUPPLY TO THE METER BASE MUST BE UNDERGROUND. ALL ELECTRICAL WIRING SHALL CONFORM TO THE CITY OF WICHITA CODE.
- A UL LISTED LIGHTNING ARRESTOR SHALL BE INSTALLED AFTER THE DISCONNECT SWITCH FOR VOLTAGE SURGE PROTECTION OF THE AUTOMATIC TRANSFER SWITCH AND ALL SECONDARY WIRING.
- THE DRIVE APPROACH TO THE LIFT STATION SHALL BE CONSTRUCTED AS INDICATED ON THE PLAN AND SHALL BE INCLUDED AS PART OF THE LUMP SUM PRICE BID FOR FURNISHING AND INSTALLING LIFT STATION.
- THE CONTRACTOR SHALL CONTACT K.G. & E. (MIKE PRUITT, 261-6257) TO MAKE ARRANGEMENTS FOR ELECTRICAL SERVICE.
- THE CONTRACTOR SHALL BE RESPONSIBLE FOR ARRANGEMENTS WITH ARJLA GAS COMPANY (JERRY WATKINS, 942-8350) FOR EXTENSION OF GAS SERVICE TO THE LIFT STATION SITE, AND FOR PAYMENT OF COSTS OF SUCH EXTENSION AND METER SETTING. LOCATION OF METER TO BE ACCEPTABLE TO ARJLA GAS COMPANY AND TO THE CITY OF WICHITA SEWER MAINTENANCE DEPT.
- FITTINGS AND CONCRETE THRUST BLOCKS SHALL BE CONSIDERED SUBSIDIARY TO THE INSTALLATION OF THE FORCE MAIN AND NOT PAID FOR SEPARATELY.
- FORCE MAIN WARNING SIGNS SHALL BE PLACED AT THE FOLLOWING STATIONS: 0+36, 17+86, 20+14, 21+08.



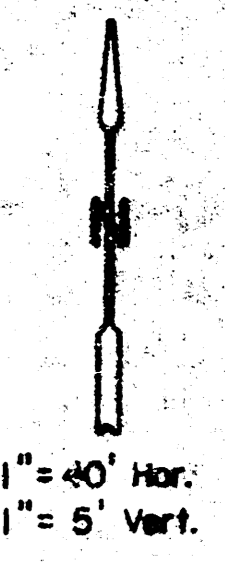
- BENCHMARKS:
- City Disc - 79' South & 46' East of the N.E. Corner of Sec. 12. Elev. = 172.08 City Datum.
 - N. Rim M.H. - 240' North & 110' East of the S.E. Corner of Sunridge Addition. Elev. = 169.11 City Datum.
 - R.R. Spike in 24" Cottonwood - 26' North & 29' West of S.W. Corner, Lot 29, Blk. "A", Teal Brook Estates. Elev. = 152.63 City Datum.

Sheet No.	Description
1	Cover Sheet
2-3	Plan & Profile
4	Site Plan & Details, Force Main & Lift Station
5	Stand-By Generator & Air Release Manhole
6	Lift Station

Built Per Plan
ROL 2-90

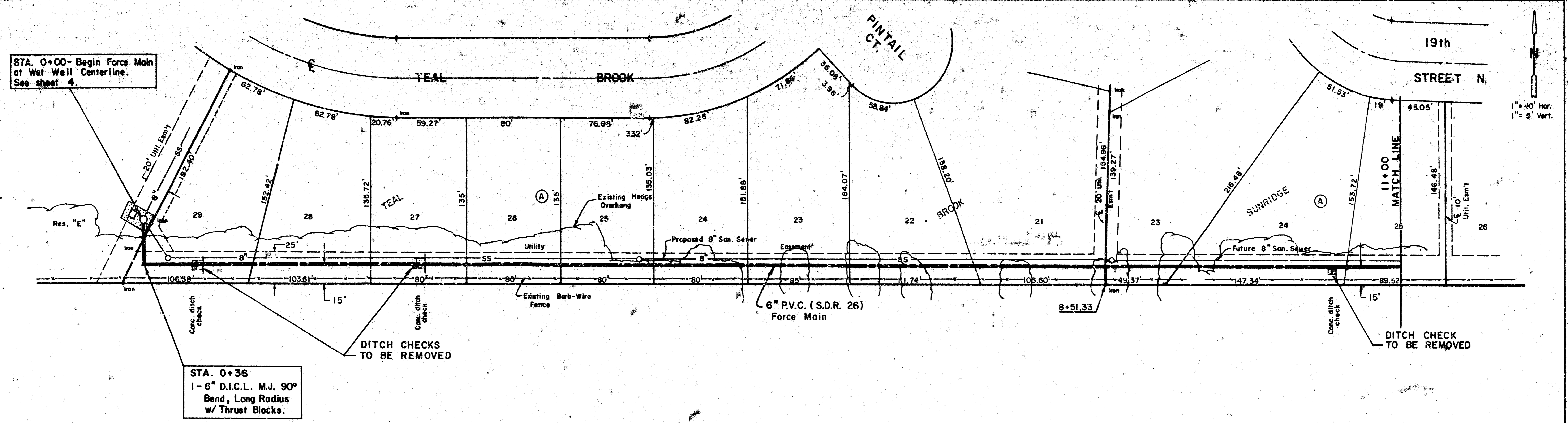
MOEHRING & ASSOCIATES
CONSULTING ENGINEERS
WICHITA

FILMED FROM THE BEST AVAILABLE COPY



STA. 0+00- Begin Force Main at Wet Well Centerline. See sheet 4.

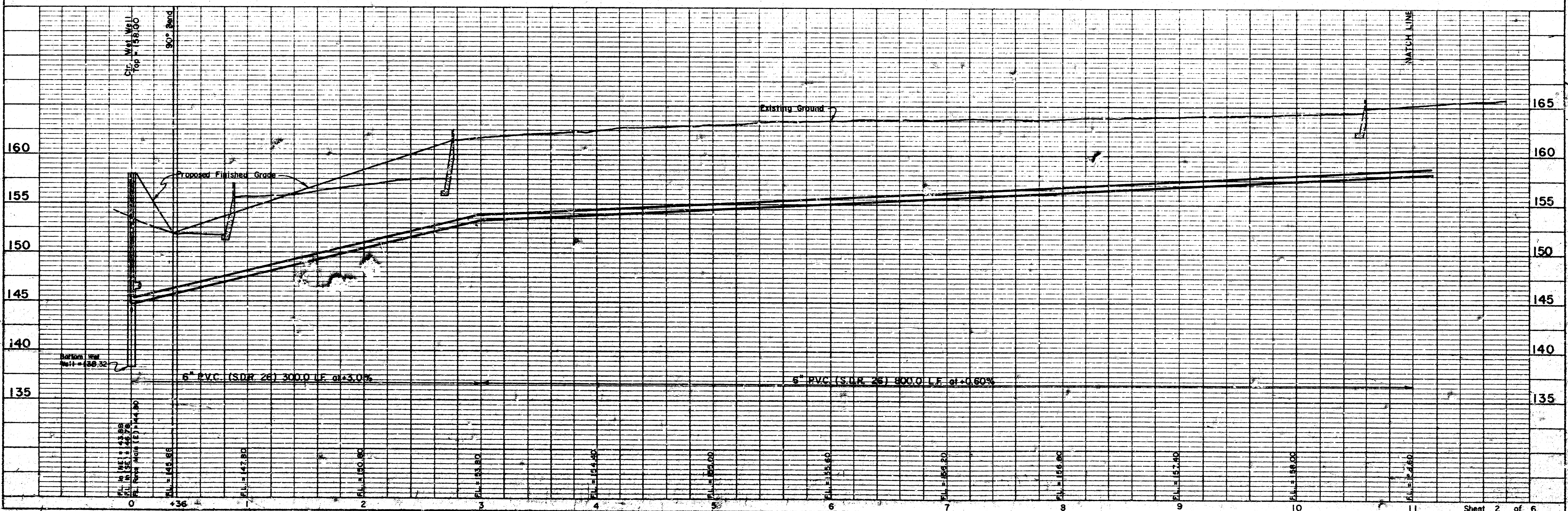
STA. 0+36
1-6" D.I.C.L. M.J. 90° Bend, Long Radius w/ Thrust Blocks.



NOTE: COST OF REMOVAL OF CONC. DITCH CHECKS TO BE SUBSIDIARY AND NOT PAID FOR SEPERATELY.

DATE	
BY	
REVISION	
NO.	
DATE	
BY	
REVISION	
NO.	
DATE	
BY	
REVISION	
NO.	
DATE	
BY	
REVISION	
NO.	

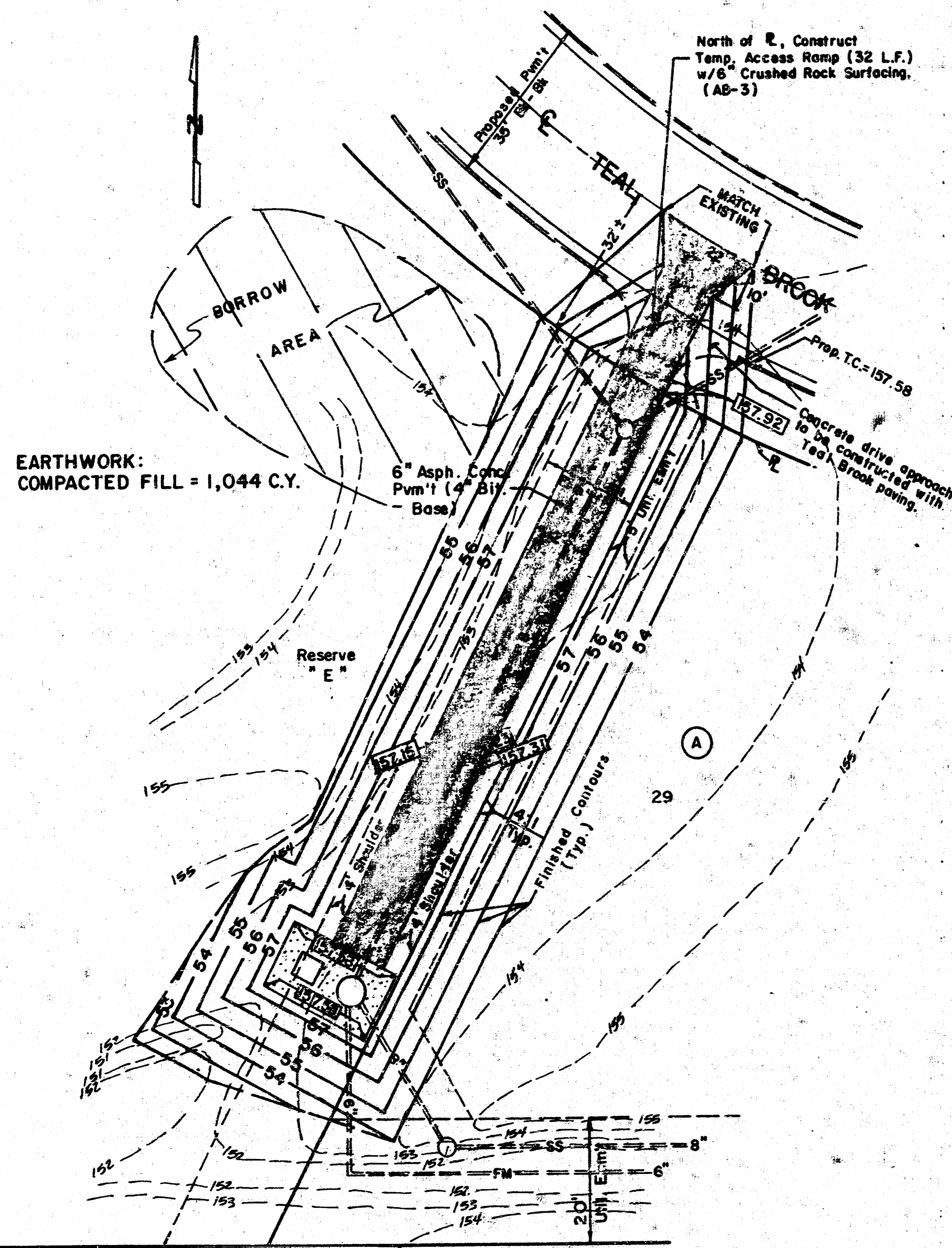
DATE	
BY	
REVISION	
NO.	
DATE	
BY	
REVISION	
NO.	
DATE	
BY	
REVISION	
NO.	



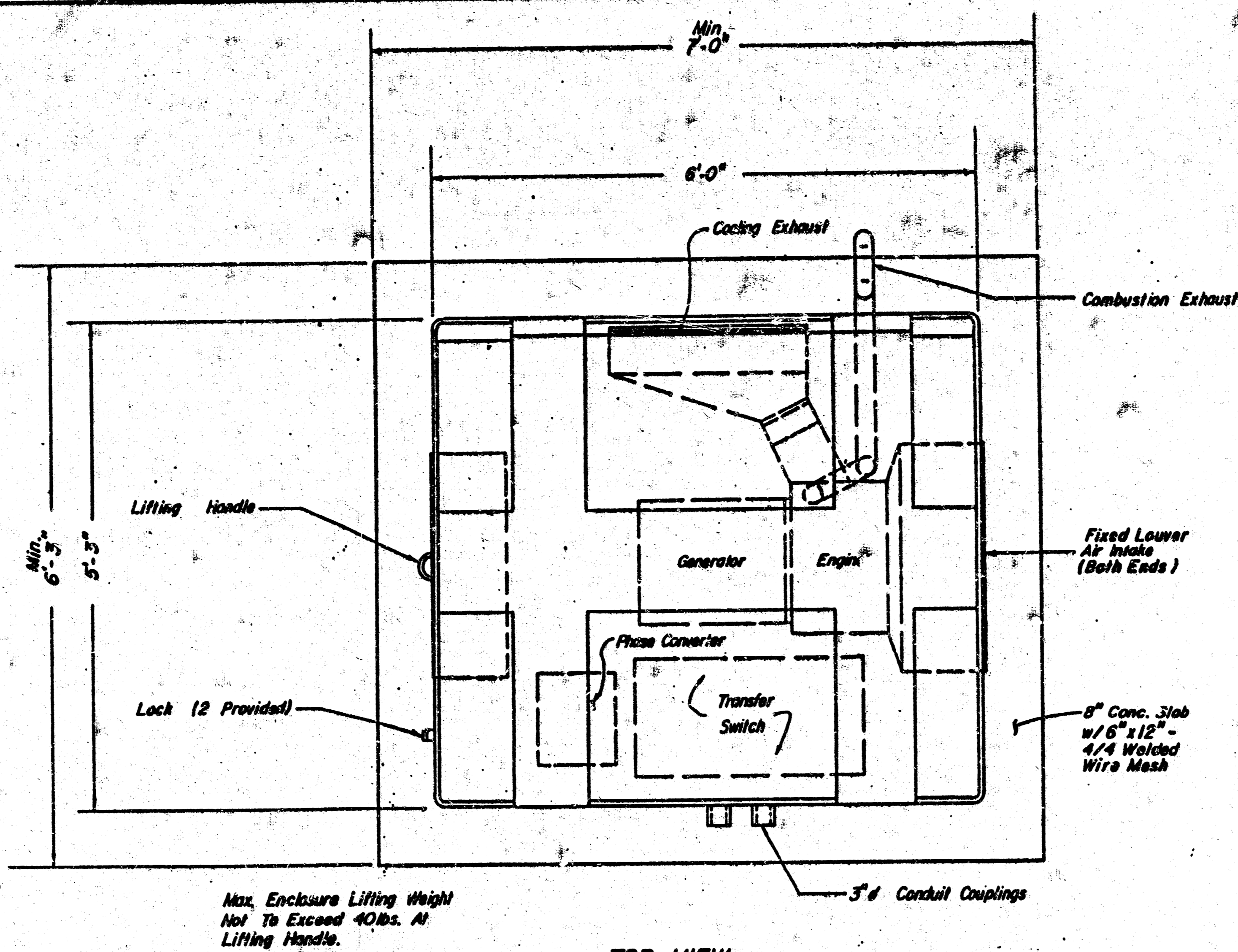
Sheet 2 of 6

FILMED FROM THE BEST AVAILABLE COPY

Proj. No. 468-76-245-81927-000-000-001

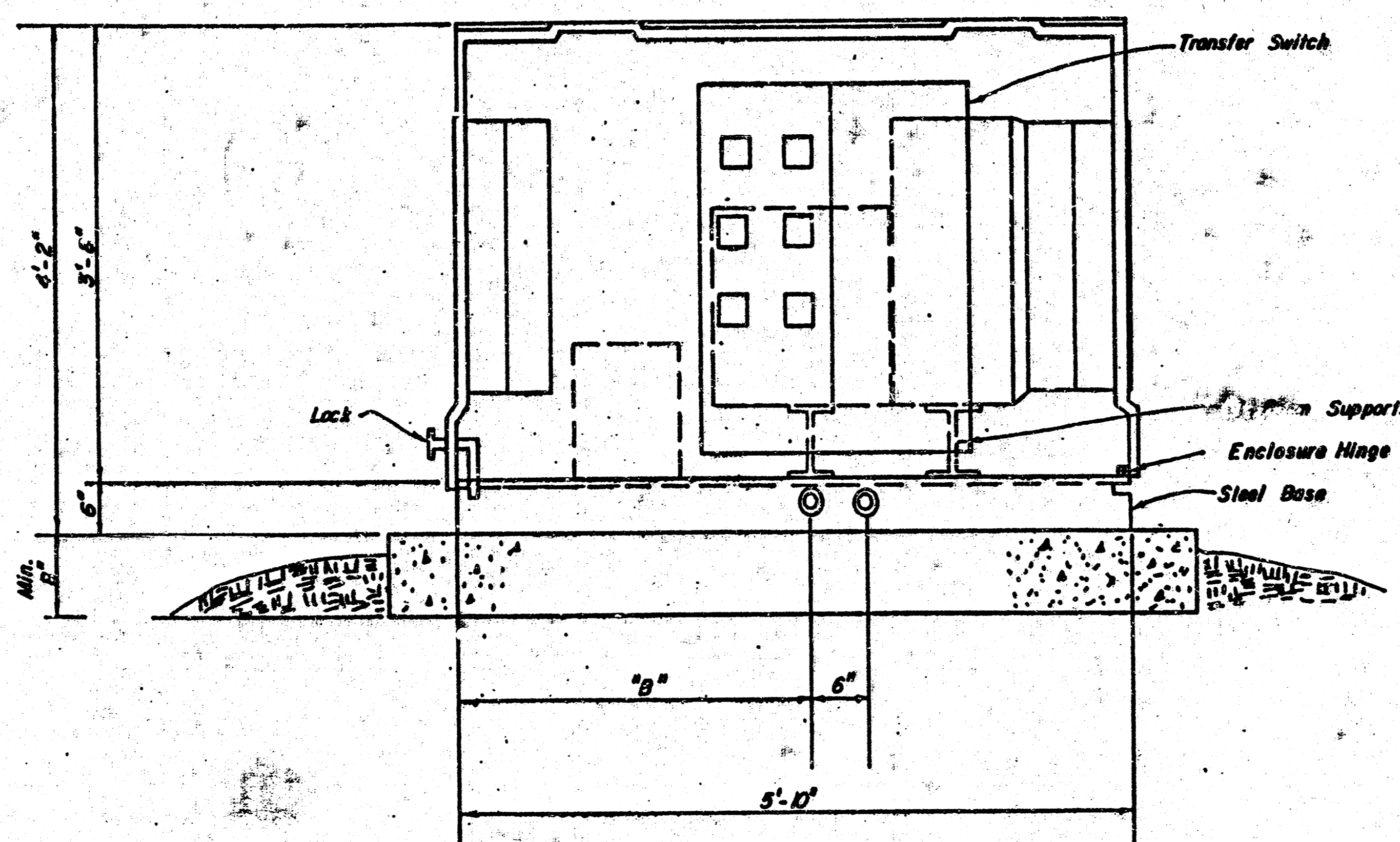


LIFT STATION AND ACCESS DRIVE
GRADING PLAN
1" = 20'

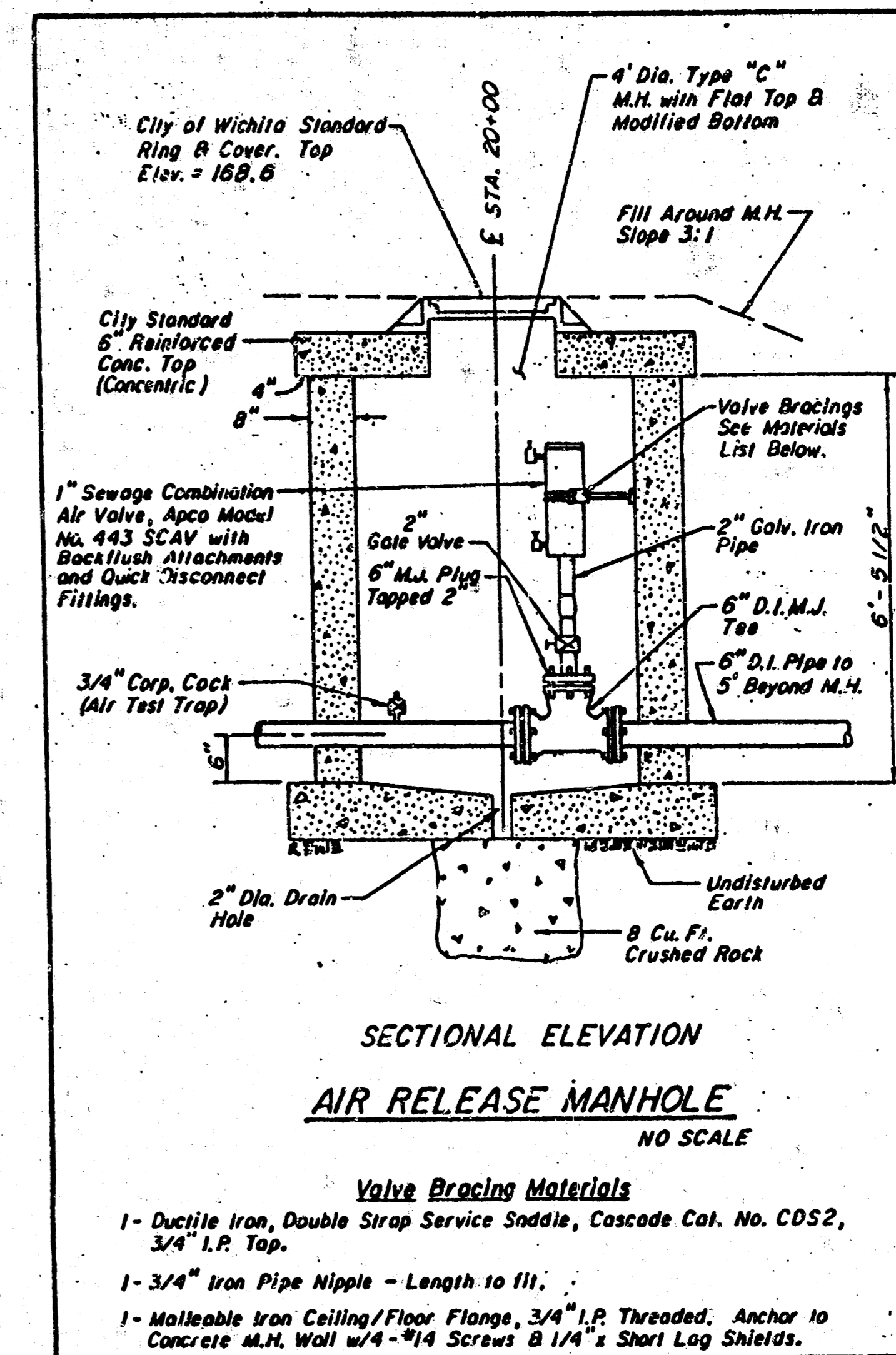


TOP VIEW

STAND-BY GENERATOR DETAILS
STANNARD POWER EQUIPMENT CO.
SERIES 1000
(N.T.S.)



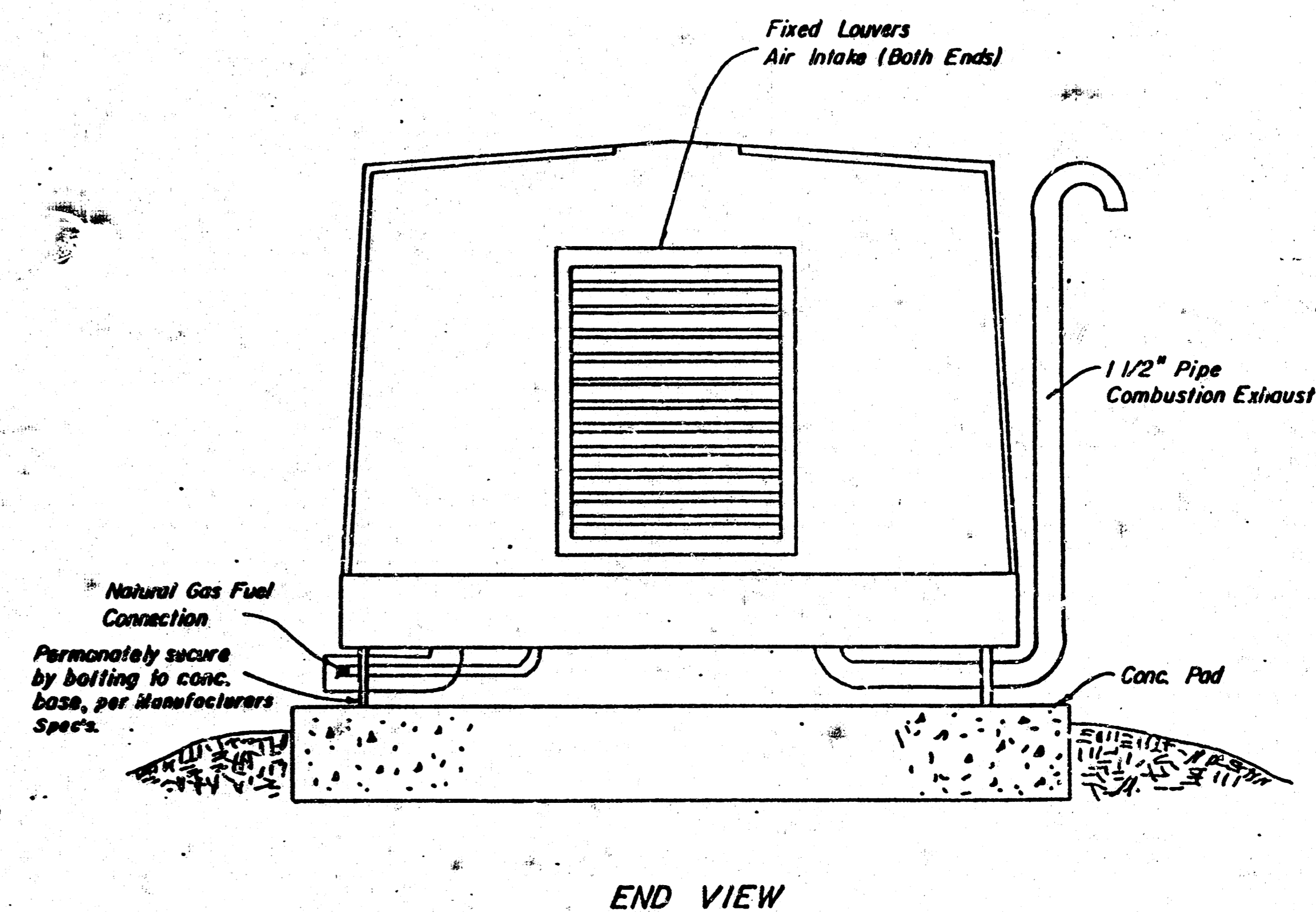
SECTIONAL ELEVATION



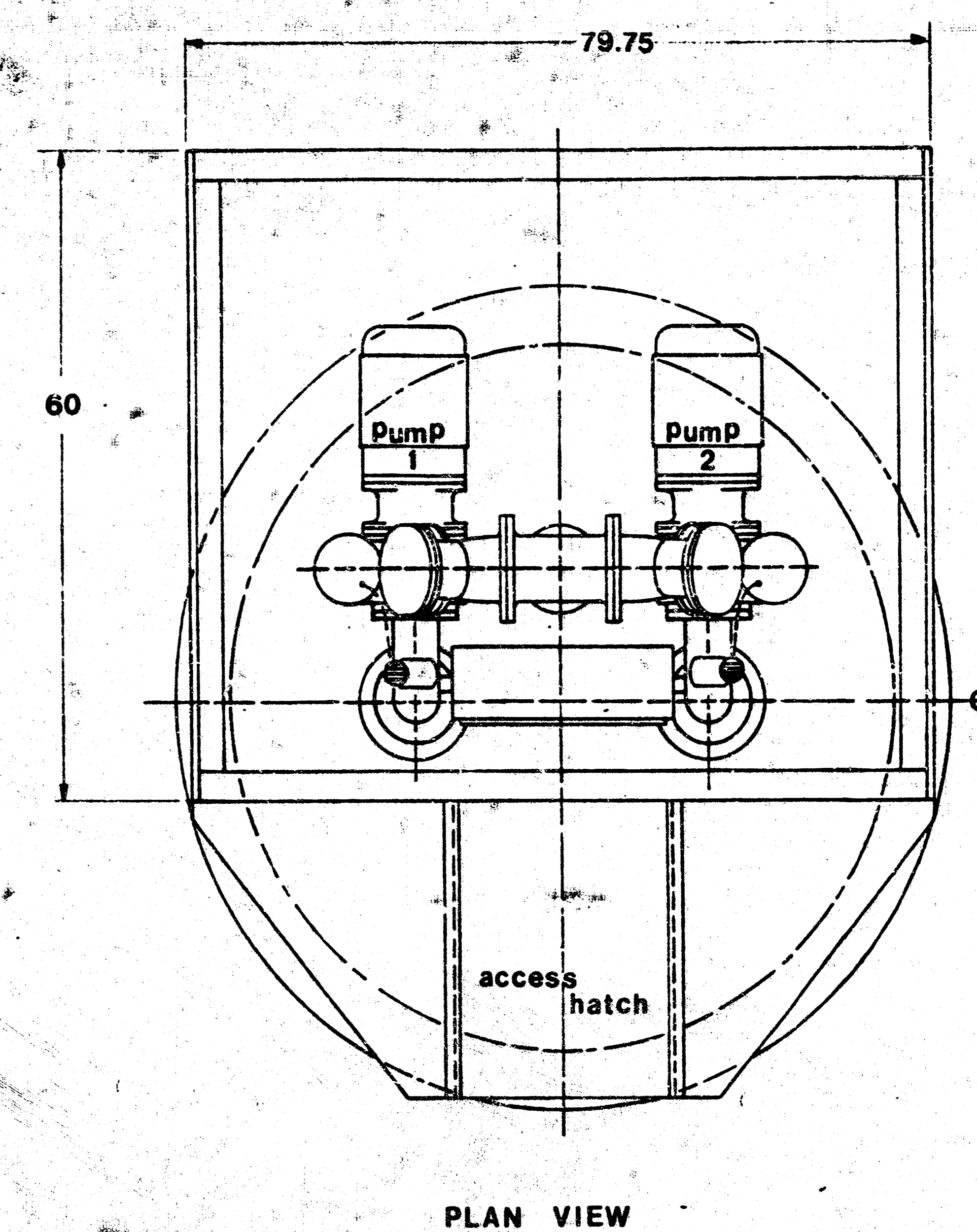
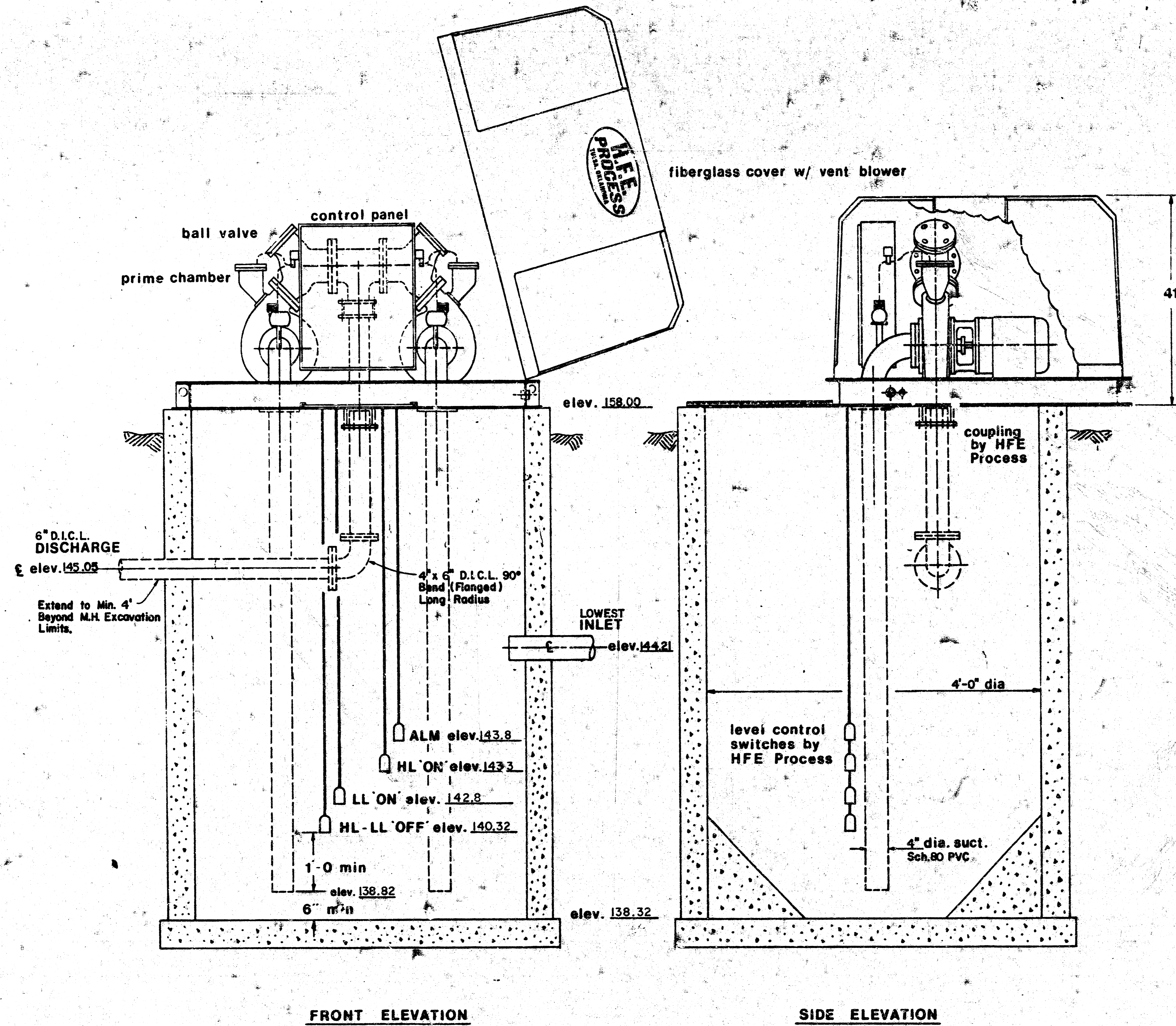
SECTIONAL ELEVATION
AIR RELEASE MANHOLE
NO SCALE

Valve Bracing Materials

- 1- Ductile Iron, Double Strap Service Saddle, Cascade Cat. No. CDS2, 3/4" I.P. Top.
- 1- 3/4" Iron Pipe Nipple - Length to fit.
- 1- Malleable Iron Ceiling/Floor Flange, 3/4" I.P. Threaded. Anchor to Concrete M.H. Wall w/4 - #14 Screws @ 1/4" x Short Lag Shields.



END VIEW



NOTES: 500 watt heater - std.
250 cfm vent fan - std.
1.5 & .75" service conn.



Project No. 465-76-245-61227-000-000-001 Sheet 6 of 6

FILMED FROM THE BEST AVAILABLE COPY