

LAT. 317, SANITARY SEWER
SOUTHWEST INTERCEPTOR

TO SERVE A PART OF
WHEATLAND ADDITION
TO SEDGWICK COUNTY, KANSAS

CITY OF WICHITA, KANSAS
M.E. LINDEBAK CITY ENGINEER

CITY PROJECT NO. 468-76-245-82287-000-000-001

INDEX NO. 741769

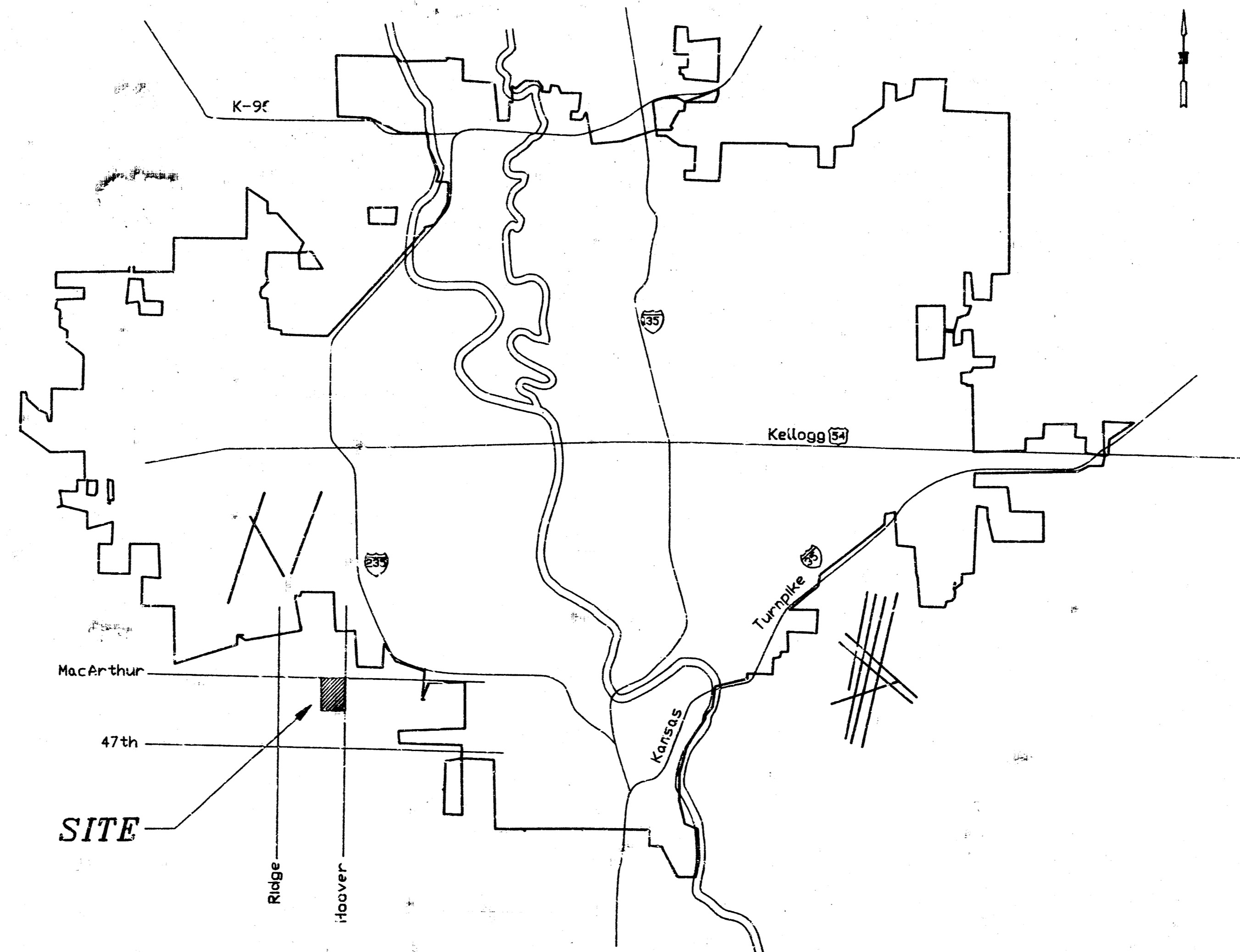
January 1994

IMPROVEMENT DISTRICT DESCRIPTION

LOTS 1 THROUGH 8 INCLUSIVE AND
LOTS 21 THROUGH 28 INCLUSIVE, BLOCK "D"
LOTS 45 THROUGH 60 INCLUSIVE, BLOCK "E"
IN WHEATLAND ADDITION

INDEX

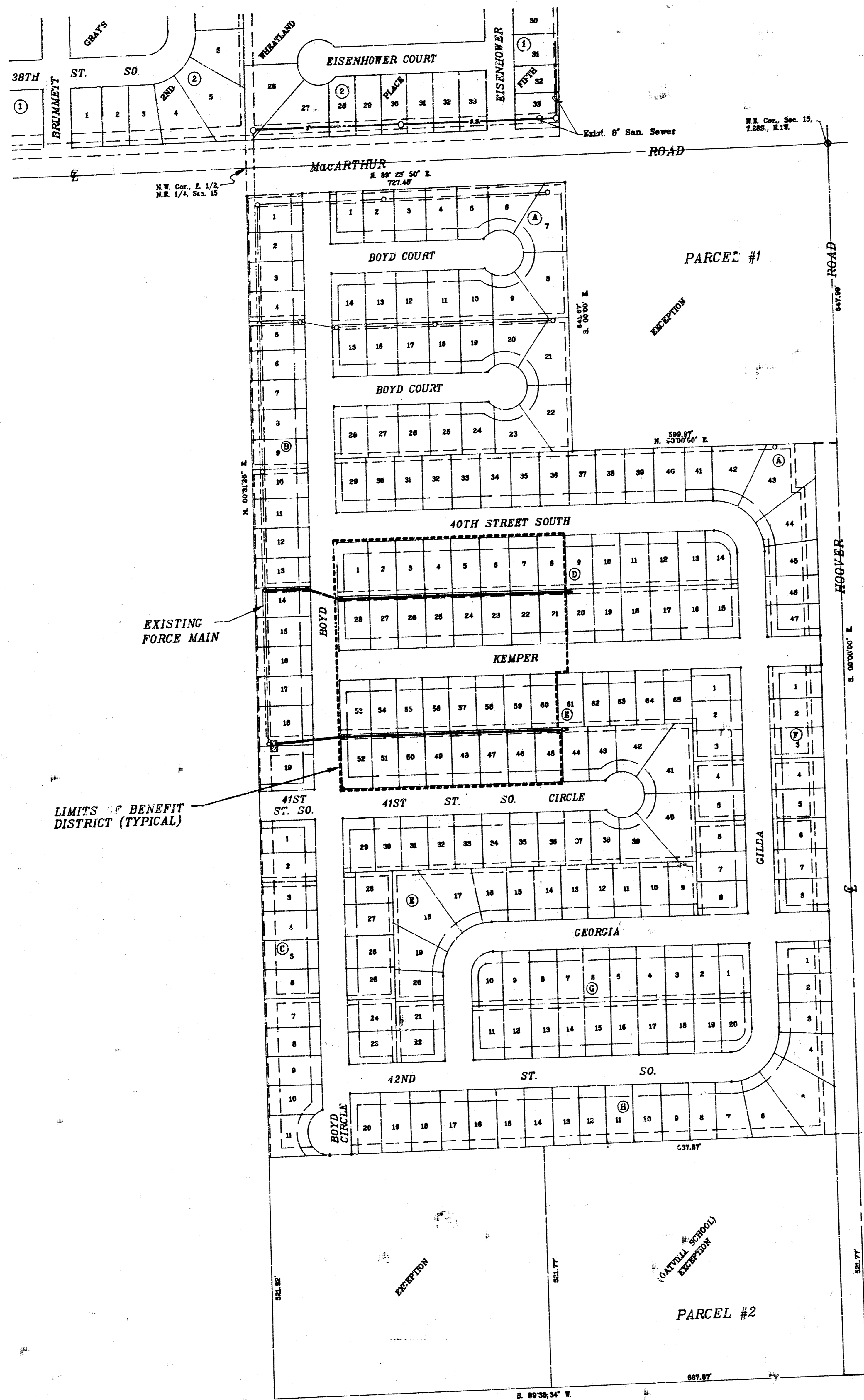
1. Cover Sheet
2. Key Map
3. Easement Grading Plan / Plat
- 4,5 Plan & Profiles



Booked 11-16-94
JKB
As Per Plan



MOHRING & ASSOCIATES
CONSULTING ENGINEERS
WICHITA



WHEATLAND ADDITION
SEDCWICK COUNTY, KANSAS

1" = 150'

SANITARY SEWER KEY MAP

NOTES

- CONTRACTOR WILL BE REQUIRED TO PROVIDE A MINIMUM ADVANCE NOTICE OF TWENTY-FOUR (24) HOURS TO UTILITY COMPANIES PRIOR TO STARTING ANY EXCAVATION AS FOLLOWS:

KANSAS ONE-CALL	687-2470
-----------------	----------

THE CONTRACTOR MUST NOTIFY THE FOLLOWING IN CASE OF AN EMERGENCY:

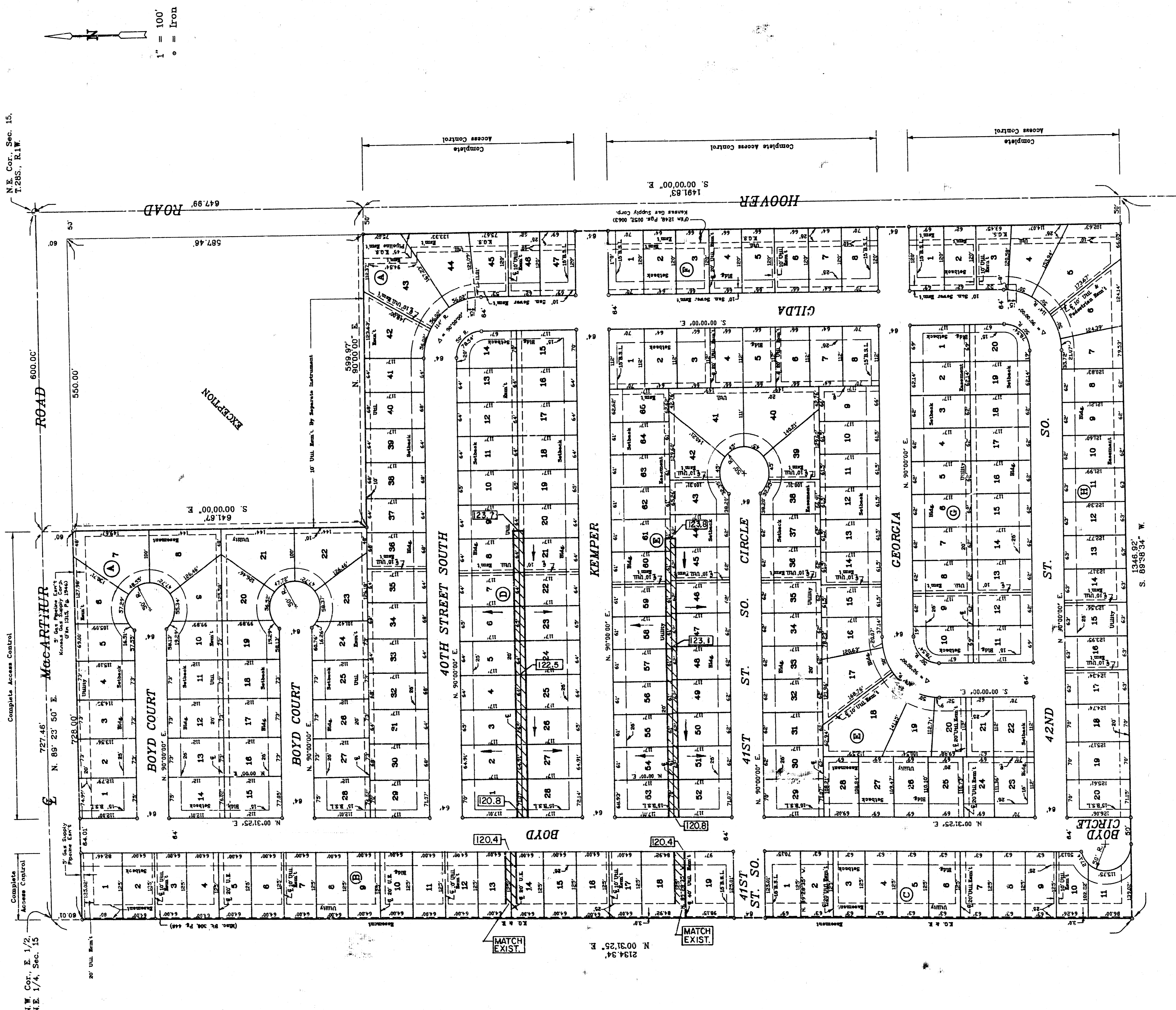
CABLEVISION	262-4270 OR 263-2061
K.P. & L. GAS SERVICE COMPANY	263-7511
KANSAS GAS & ELECTRIC	263-1141
ARKLA GAS COMPANY	942-8350 OR 263-6161
SOUTHWESTERN BELL TELEPHONE COMPANY	1-571-2611
CITY OF WICHITA WATER DEPARTMENT	268-4908
CITY OF WICHITA SEWER MAINTENANCE	268-4071
- THE CONTRACTOR SHALL BE RESPONSIBLE FOR PRESERVING PROPERTY WHICH ARE DAMAGED OR DESTROYED BY HIS CONSTRUCTION OPERATIONS. SUCH ITEMS SHALL BE RE-ESTABLISHED BY A LICENSED LAND SURVEYOR IN ACCORDANCE WITH STATE LAWS.
- UNLESS OTHERWISE SPECIFIED ON THE PLANS, MANHOLES MAY BE TYPE "P", "C" OR "D" MANHOLES. MANHOLES SHALL BE CONSTRUCTED IN ACCORDANCE WITH THE STANDARD SPECIFICATIONS AND THE STANDARD DETAIL DRAWINGS.
- TRAFFIC WILL NOT BE AFFECTED IN THIS AREA OF CONSTRUCTION.
- CONTRACTOR SHALL PROVIDE POSITIVE DRAINAGE AWAY FROM ALL MANHOLE COVERS.
- CONTRACTOR SHALL GRADE THE SANITARY SEWER ALIGNMENT TO THE PROFILE AND ELEVATION SHOWN ON THE EASEMENT GRADING PLAN. ALL DISTURBED AREAS TO BE RESEEDDED USING TEMPORARY RYE GRASS WITHIN 14 DAYS UPON PROJECT COMPLETION. ALL COSTS FOR GRADING AND SEEDING SHALL BE PAID AS EASEMENT GRADING.

BENCHMARKS

- R.R. SRIKE IN UTILITY POLE AT NW CORNER WHEATLAND ADDITION. ELEV. = 124.56 CITY DATUM
- "C" ON TOP OF WEST CURB EISENHOWER, 60' N. OF C.L. McARTHUR. ELEV. = 123.46 CITY DATUM
- TOP OF IRON IN THIMBLE AT C.L. HOOVER & McARTHUR. ELEV. = 122.45 CITY DATUM

MOEHRING & ASSOCIATES
CONSULTING ENGINEERS
WICHITA

WHEATLAND ADDITION
 SEDGWICK COUNTY, KANSAS



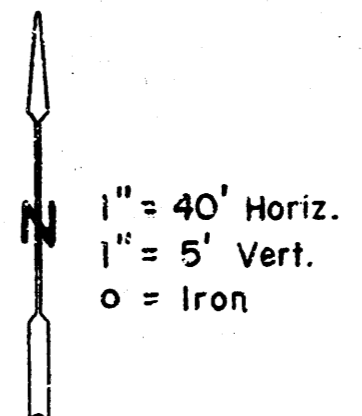
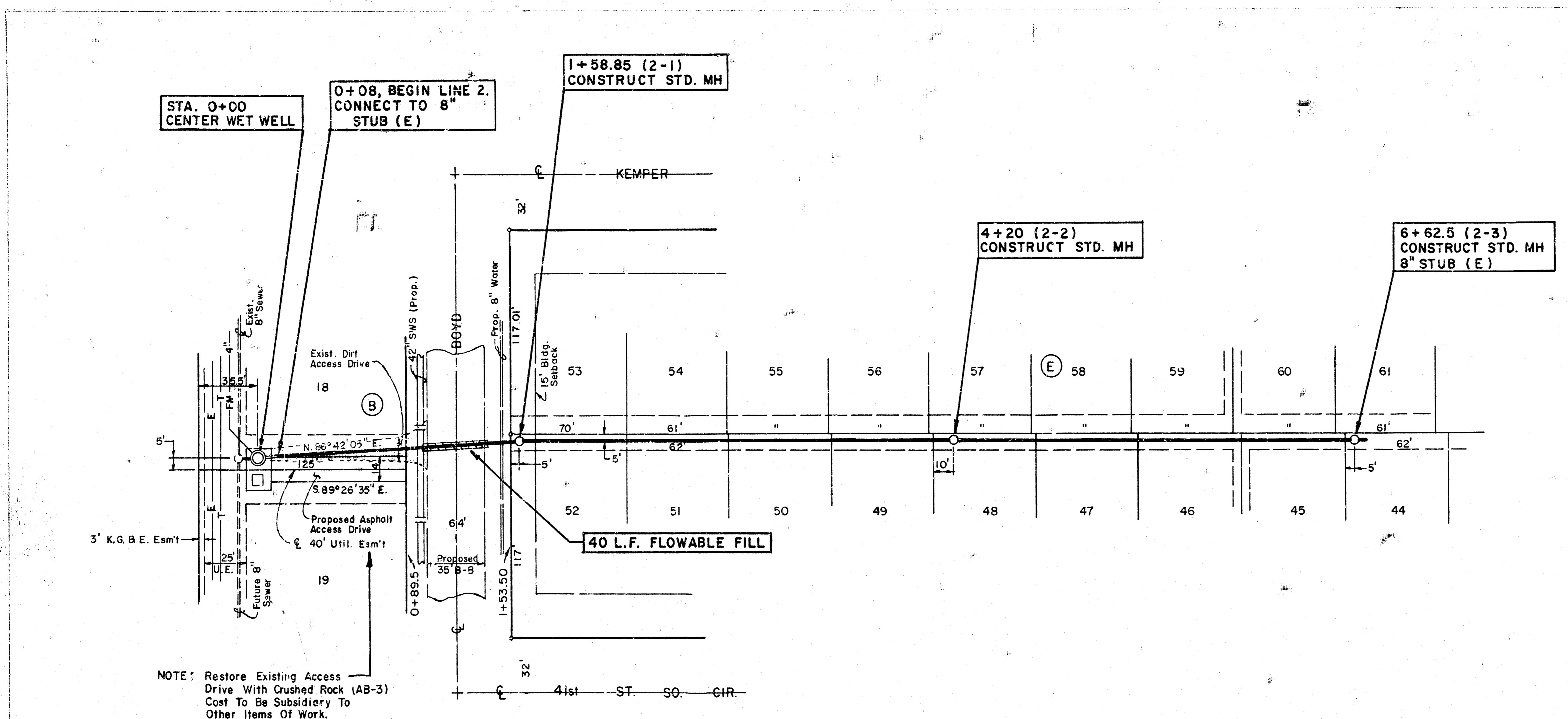
N.E. Cor. Sec. 15.
 T.28S., R.1W.

N.W. Cor. E. 1/2.
 N.E. 1/4, Sec. 15

EASEMENT GRADING PLAN / PLAN

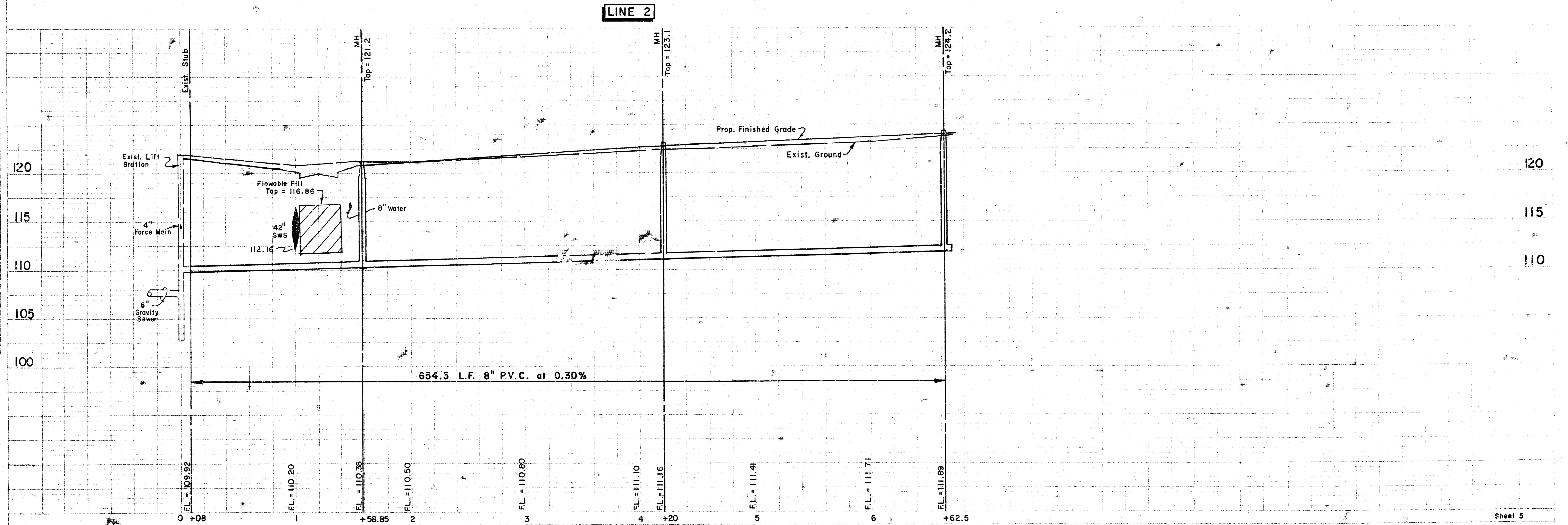
MOEHRING & ASSOCIATES CONSULTING ENGINEERS

S.E. Cor.
 N.E. 1/4, Sec. 15



PLAN
 NORTH ARROW
 SCALE
 1" = 40' HORIZ.
 1" = 5' VERT.
 O = IRON

PLAN
 NORTH ARROW
 SCALE
 1" = 40' HORIZ.
 1" = 5' VERT.
 O = IRON



LINE 2