

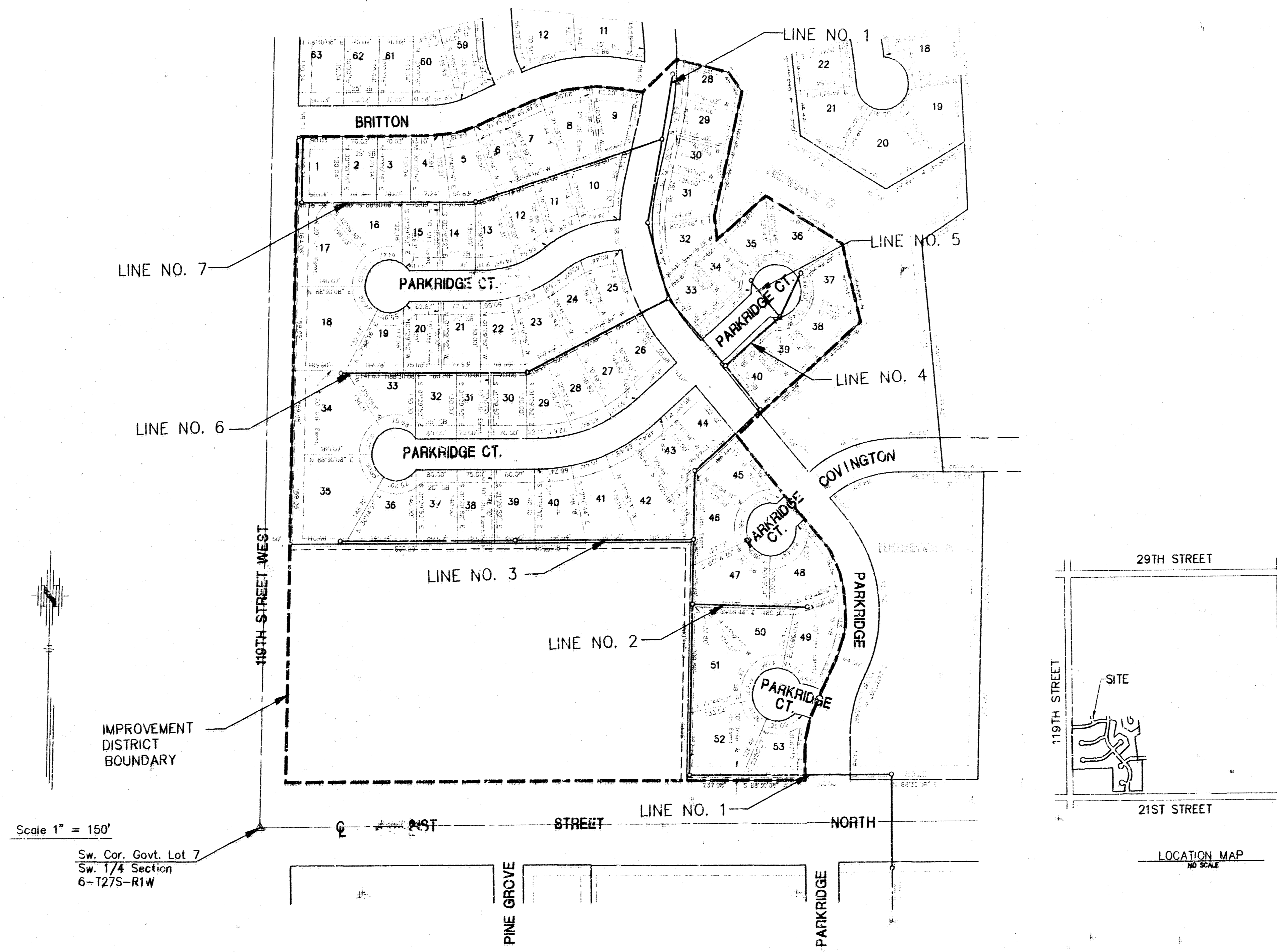
CONSTRUCTION PLANS
 SANITARY SEWER EXTENSIONS
ABERDEEN FIRST ADDITION
 TO
THE CITY OF WICHITA, KANSAS

MICHAEL E. LINDEBAK, P.E. - CITY ENGINEER
 LATERAL 333, SOUTHWEST INTERCEPTOR
 PROJECT NO. 468-82382
 INDEX CODE 741900

GENERAL NOTES:

- Existing utility lines and their location, as shown on the plans, represent the best information obtainable for design. The contractor will be required to work around existing utilities within the right-of-way which do not conflict with proposed construction.
- Rubble from the removal of miscellaneous structures and excavations which is to be wasted shall be disposed of on sites to be provided by the Contractor. These sites shall be approved by the Engineer as to suitability, appearance and site location. Locations that, in the opinion of the Engineer, will leave an unsightly appearance will not be approved.

All disposal sites must be approved by the Kansas Department of Health and Environment. Material either stockpiled or disposed of in a flood plain would require a Kansas State Board of Agriculture permit. Any material dumped in waters of the United States or wetlands is subject to U.S. Corps. of Engineers permitting regulations. Any material buried or stockpiled beyond approved construction limits would require additional archaeological investigations unless buried in a previously approved borrow location.
- The Contractor shall be responsible for maintaining continuous flow of sewage through construction. Contractor's proposed method for maintaining sewage flow shall be approved by the Engineer. Cost of maintaining flow of sewage through construction will not be paid for directly and this cost shall be considered as subsidiary to the other pay items of the work.
- The Contractor shall be responsible for preserving property irons. The Contractor will be required to re-establish any property irons which are damaged or destroyed by his construction operations. Such irons shall be re-established by a licensed land surveyor or a licensed professional engineer in accordance with state laws.
- Trees and shrubs in public right-of-way which are in direct conflict with proposed new construction shall be removed by the Contractor with the Engineer's approval. Trees and shrubs which are not in direct conflict with the proposed new construction shall be saved and protected from damage.
- Contractor shall vacuum test all manholes according to the City of Wichita standard specifications.
- Temporary grass seeding shall be provided on all distributed areas.



INDEX

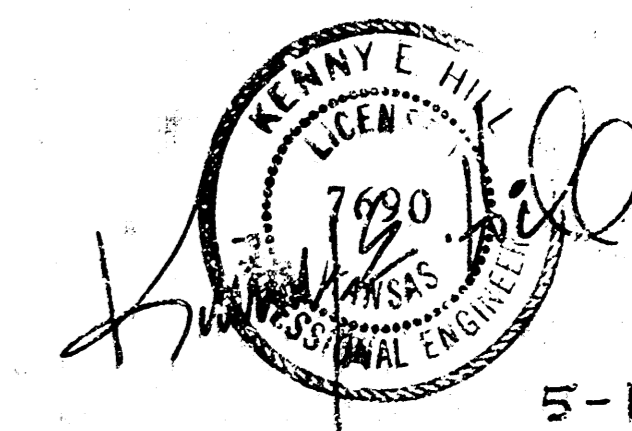
TITLE SHEET	SHEET 1
LINE NO. 1 - 2	SHEET 2
LINE NO. 1	SHEET 3
LINE NO. 3	SHEET 4
LINE NO. 4 - 5	SHEET 5
LINE NO. 6	SHEET 6
LINE NO. 7	SHEET 7
TYPE "P" MANHOLE	SHEET 8
TYPE "C" MANHOLE	SHEET 9
VERTICAL RISER DETAIL	SHEET 10
ABERDEEN 1ST ADDITION PLAT	SHEET 11

BENCH MARKS

(City of Wichita Datum)

- City of Wichita Disc 67' S. of centerline of 21st and 45' E. of centerline of 119th. Elev. 172.08
- 80d Nail in P.P. 30' E. and 50' S. W. 1/4 Corner. Section 6-1275-R1W Elev. 172.0d
- 80d Nail in P.P. 40' W. and 40' N. Corner Section 6-1275-R1W Elev. 175.05
- 80d Nail in P.P. 50' S. N. 1/4 Corner Section 6-1275-R1W Elev. 179.98

Booked per plan

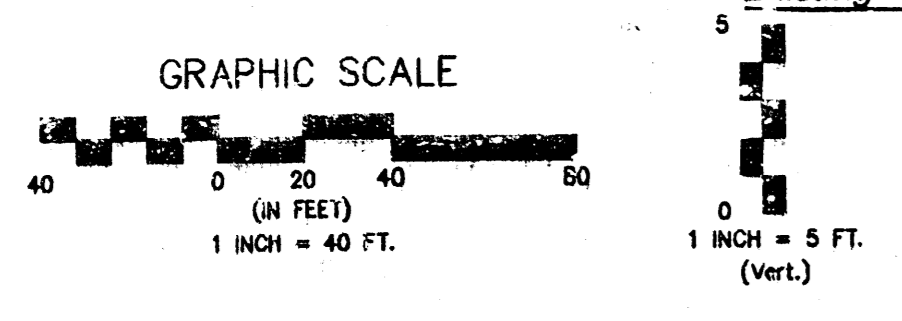
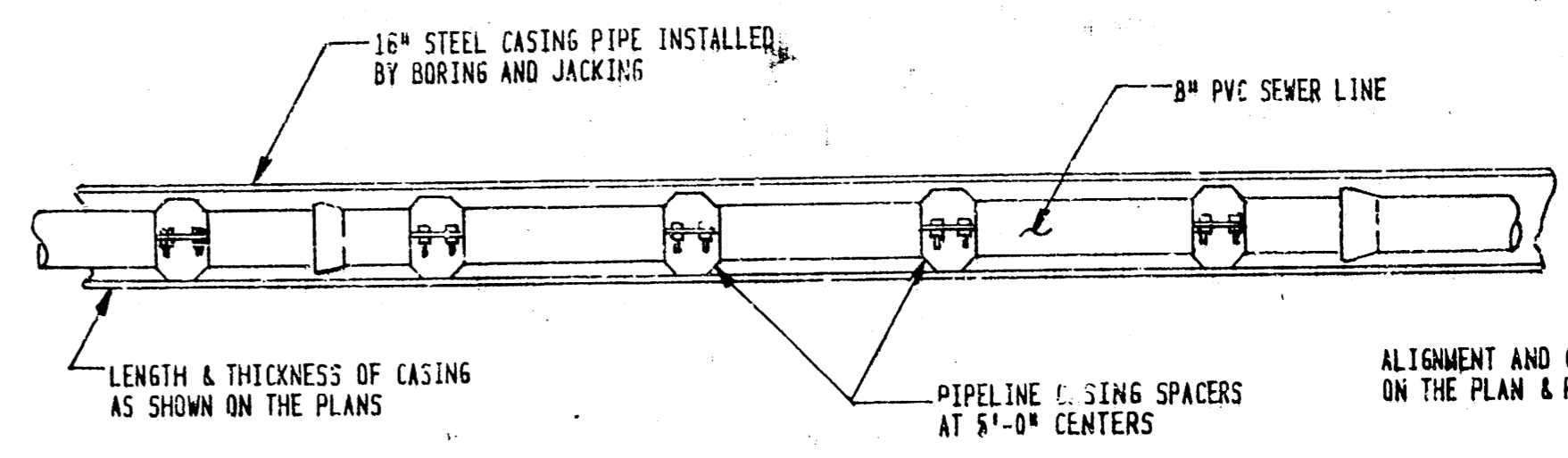
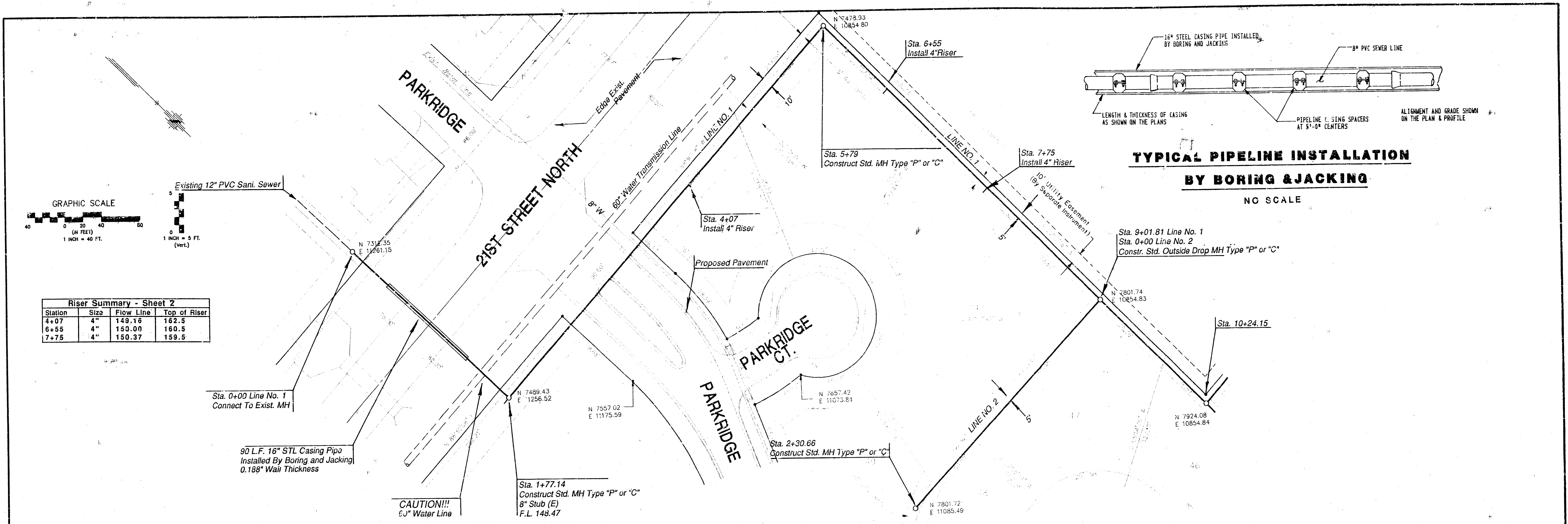


5-18-94

JUNE 1994

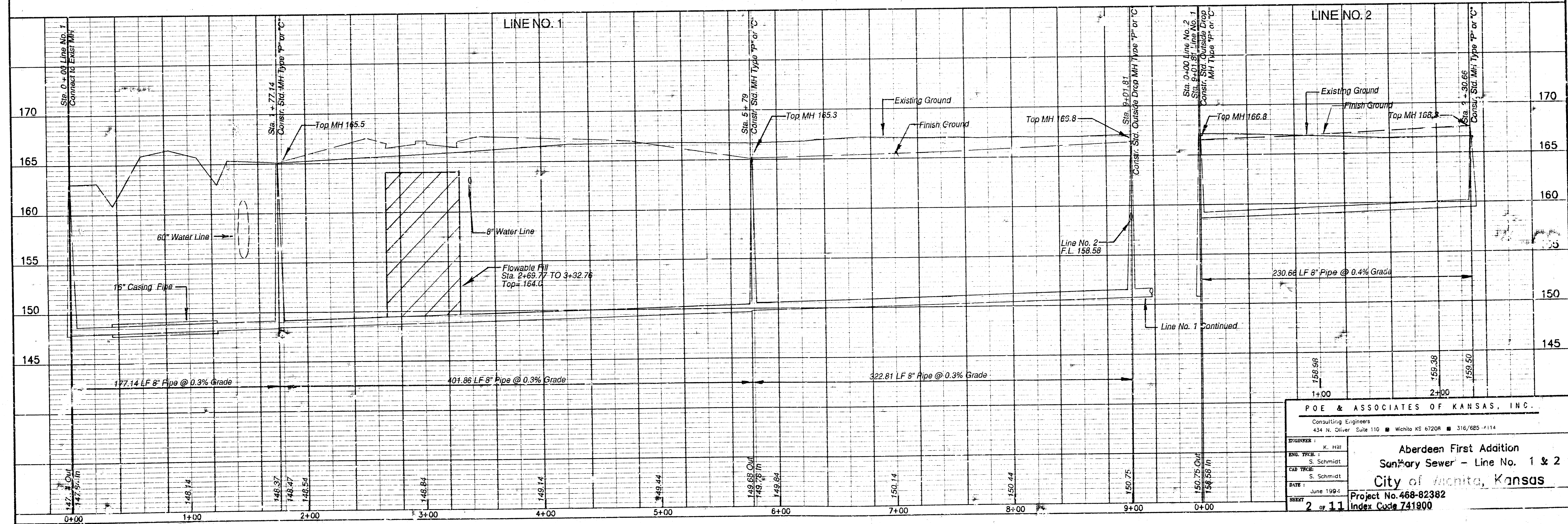
PLANS PREPARED BY
PQE & ASSOCIATES OF KANSAS, INC.

Consulting Engineers
 434 N. Oliver Suite 110 Wichita KS 67208 316/685-4114



Riser Summary - Sheet 2

Station	Size	Flow Line	Top of Riser
4+07	4"	149.18	162.5
6+55	4"	150.00	160.5
7+75	4"	150.37	159.5

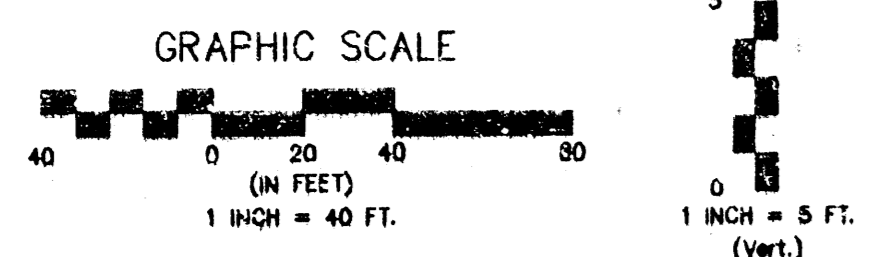


POE & ASSOCIATES OF KANSAS, INC.
 Consulting Engineers
 434 N. Oliver Suite 110 • Wichita KS 67208 • 316/685-1114

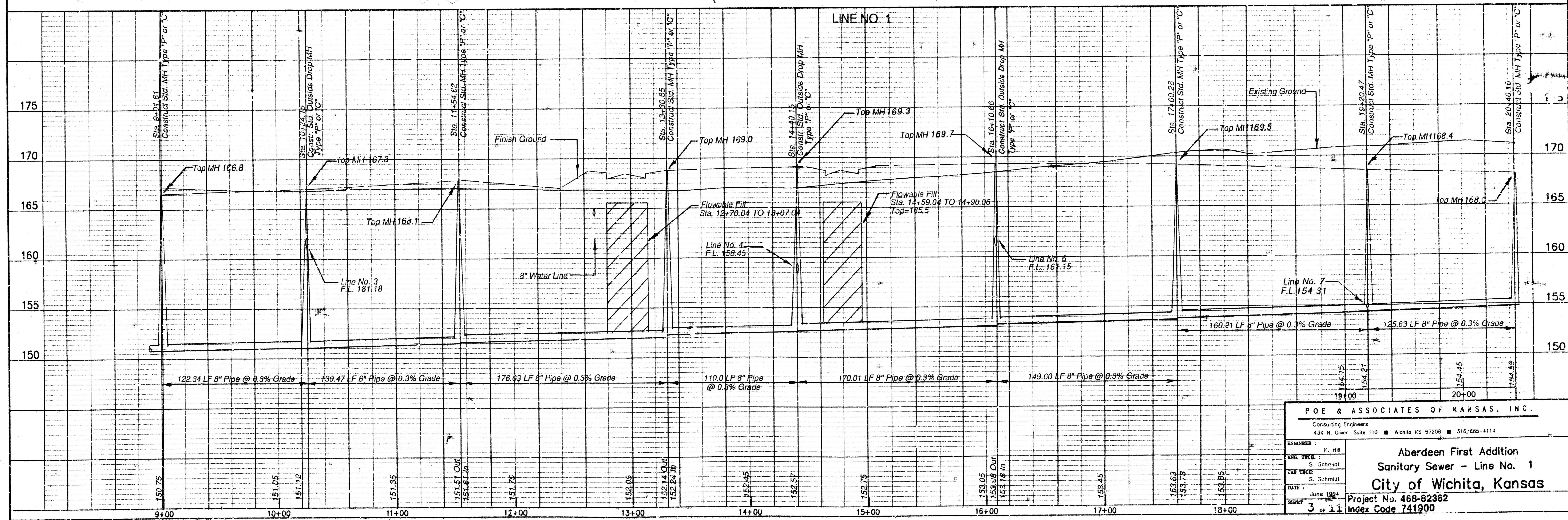
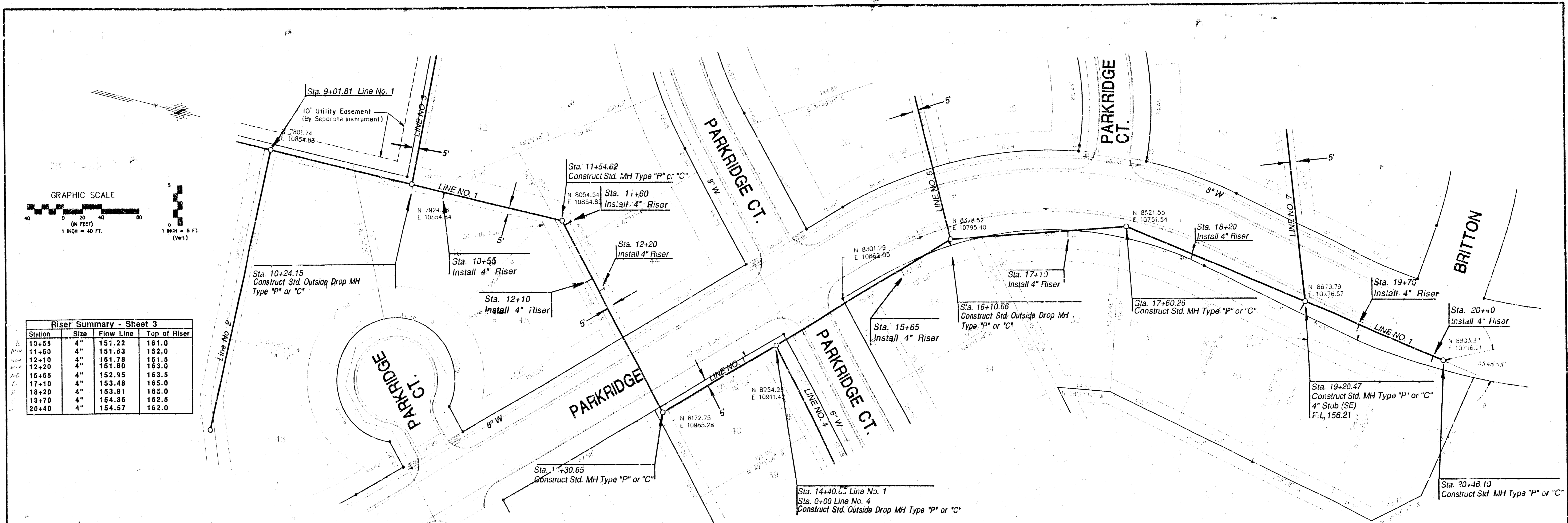
DESIGNER: K. Hill
 ENG. CHECK: S. Schmidt
 CAD CHECK: S. Schmidt
 DATE: June 1994
 SHEET: 2 of 11

Aberdeen First Addition
 Sanitary Sewer - Line No. 1 & 2
 City of Wichita, Kansas
 Project No. 468-82382
 Index Code 741900

F:\APPS\DWG\31\BASE-SS Mod May 4 14:56:00 1994 Steve Schmidt



Station	Size	Flow Line	Top of Riser
10+55	4"	151.22	161.0
11+60	4"	151.63	162.0
12+10	4"	151.78	161.5
12+20	4"	151.80	163.0
16+65	4"	152.95	163.5
17+10	4"	153.48	165.0
18+20	4"	153.91	165.0
19+70	4"	154.36	162.5
20+40	4"	154.57	162.0

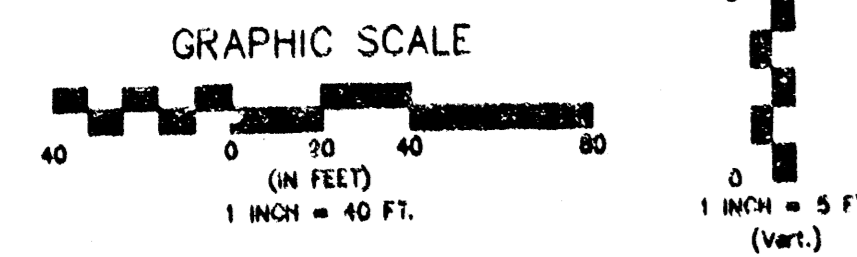


POE & ASSOCIATES OF KANSAS, INC.
 Consulting Engineers
 434 N. Oliver, Suite 110 ■ Wichita, KS 67208 ■ 316/685-1114

ENGINEER: K. Hill
 SURV. TRACER: S. Schmidt
 CADD TRACER: S. Schmidt
 DATE: June 1994
 SHEET: 3 of 11

Aberdeen First Addition
 Sanitary Sewer - Line No. 1
 City of Wichita, Kansas
 Project No. 468-62382
 Index Code 741900

F:\APPS\DATA\BASE-SS Web May 4 14 56:02 7584 Steve Schmidt



PARKRIDGE CT.

PARKRIDGE CT.

119TH ST. WEST

LINE NO. 2

LINE NO. 1

LINE NO. 3

LINE NO. 3

Sta. 0+00 Line No. 3
Srt. 10+24.15 Line No. 1

Sta. 3+55.17
Construct Std. MH Type "P" or "C"

Sta. 7+05.41
Construct Std. MH Type "P" or "C"

N 1024.08
E 10894.44

N 8044.75
E 10520.21

Sta. 0+00 Line No. 3
Srt. 10+24.15 Line No. 1
Construct Std. Closure Drop MH
Type "P" or "C"

Sta. 3+55.17
Construct Std. MH Type "P" or "C"

Sta. 7+05.41
Construct Std. MH Type "P" or "C"

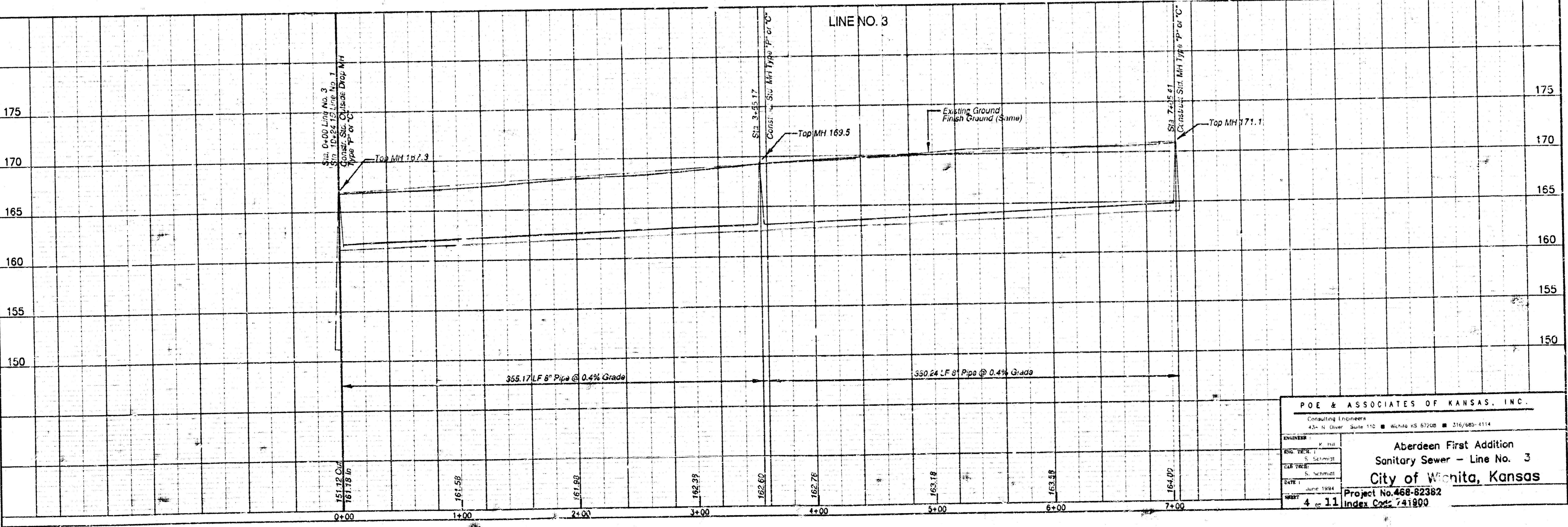
Top MH 167.9

Top MH 169.5

Top MH 171.1

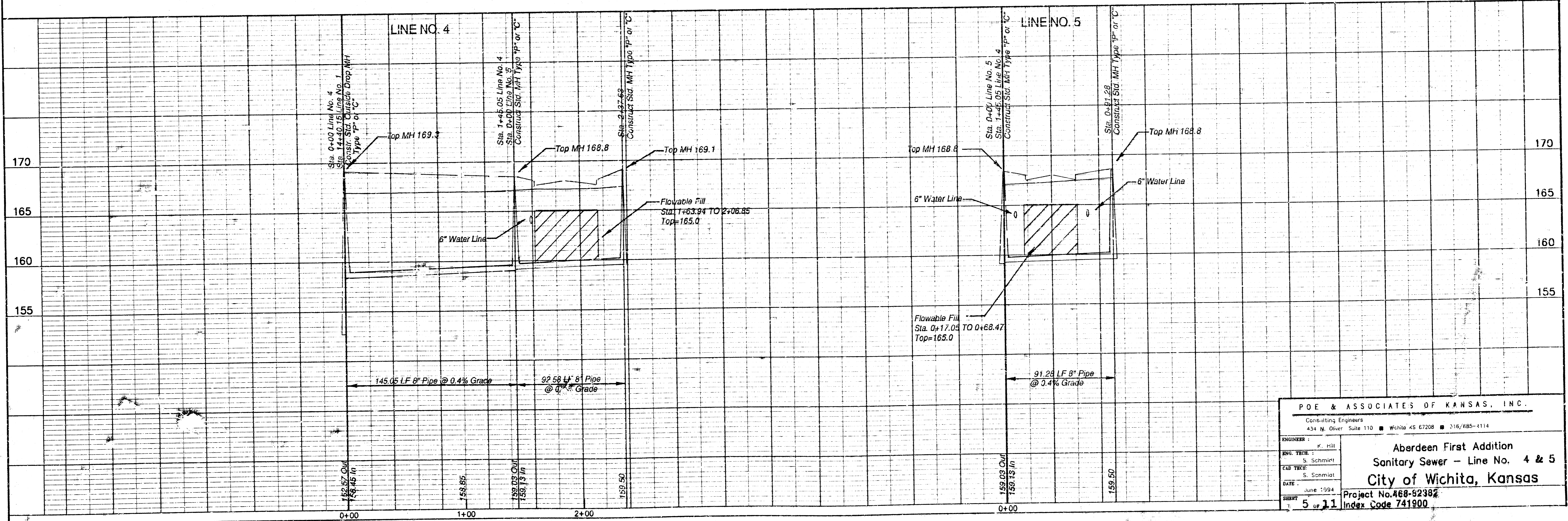
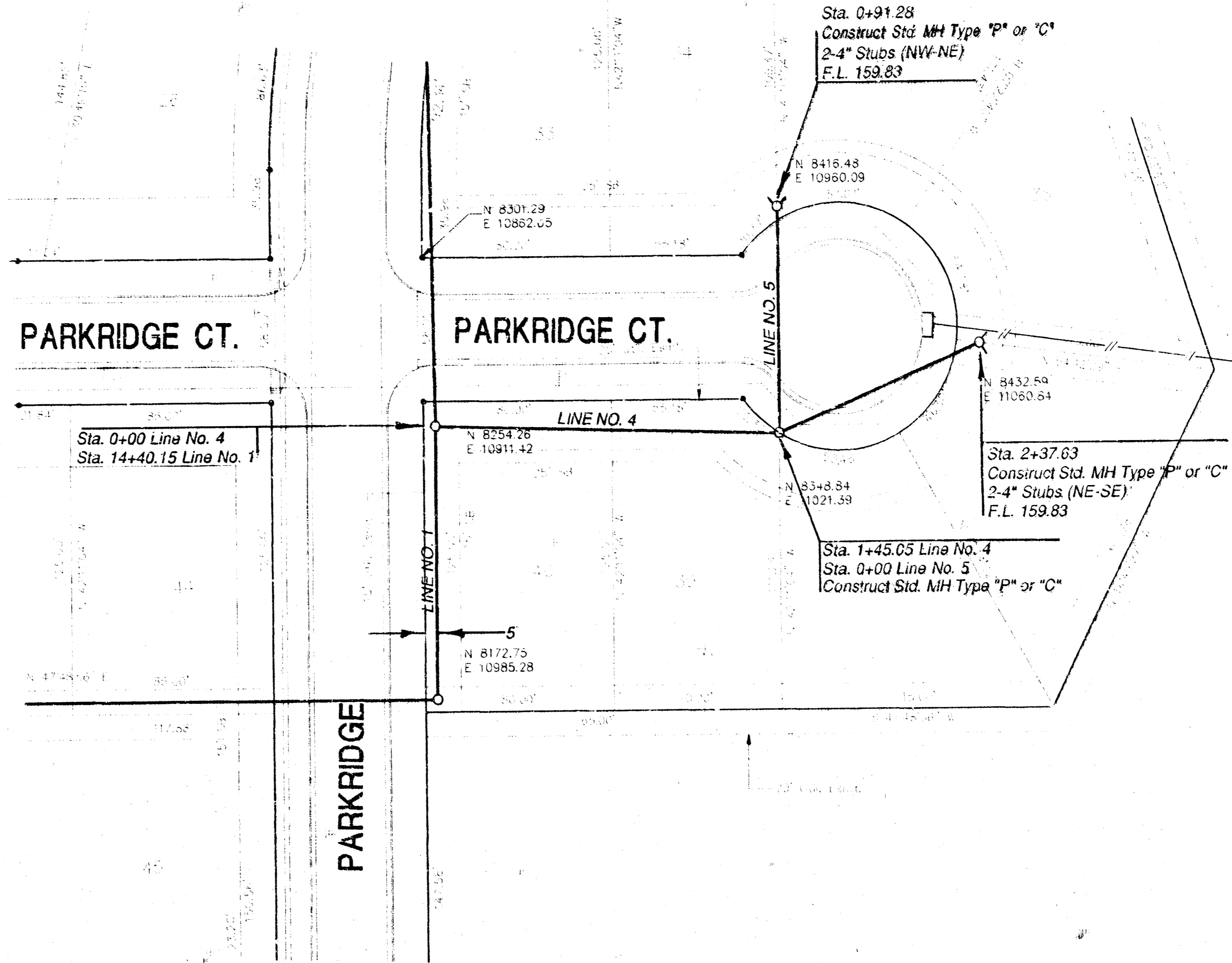
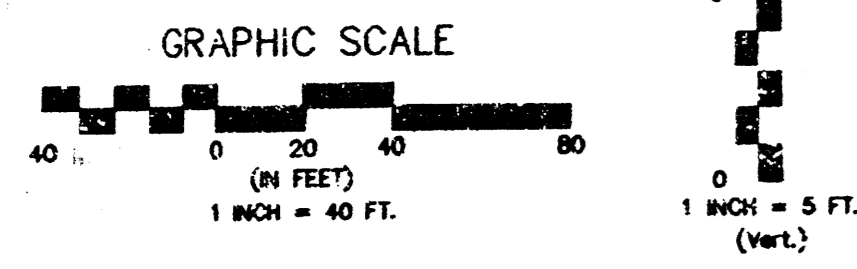
355.17 LF 8" Pipe @ 0.4% Grade

350.24 LF 8" Pipe @ 0.4% Grade



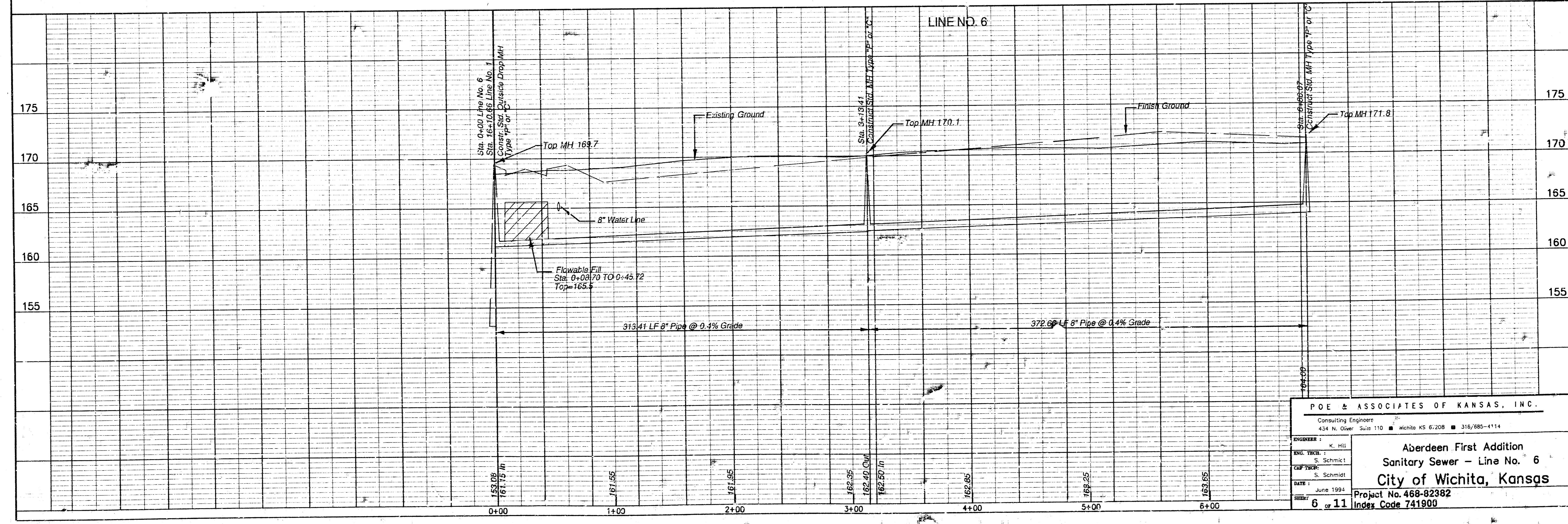
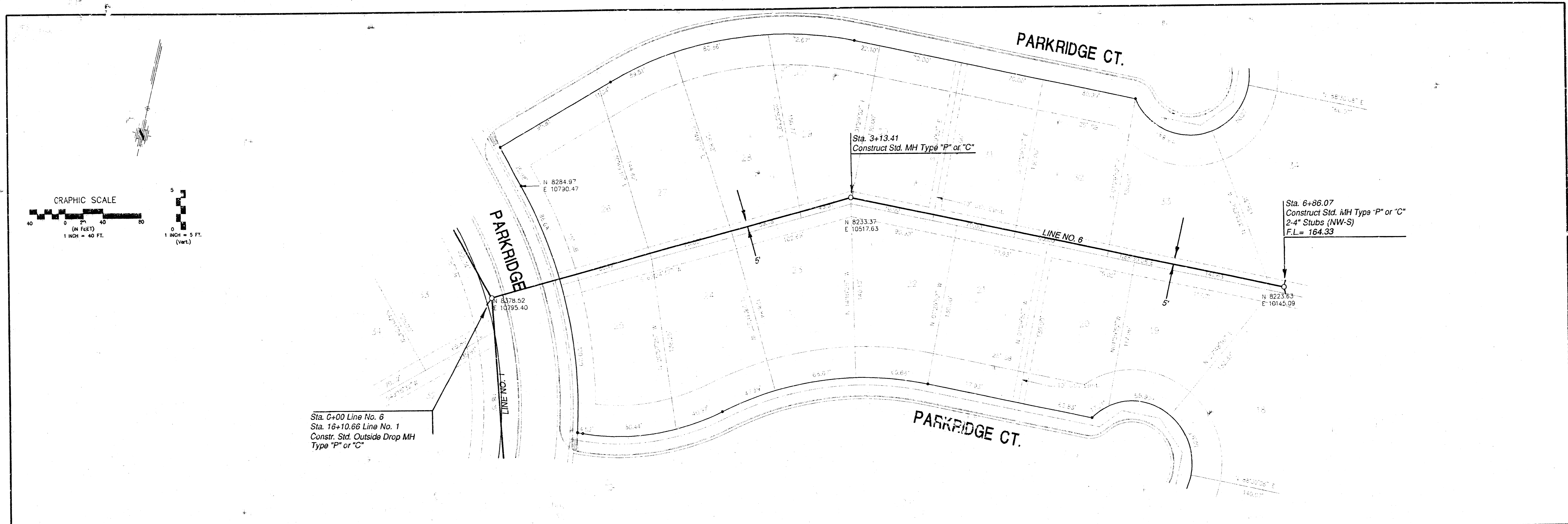
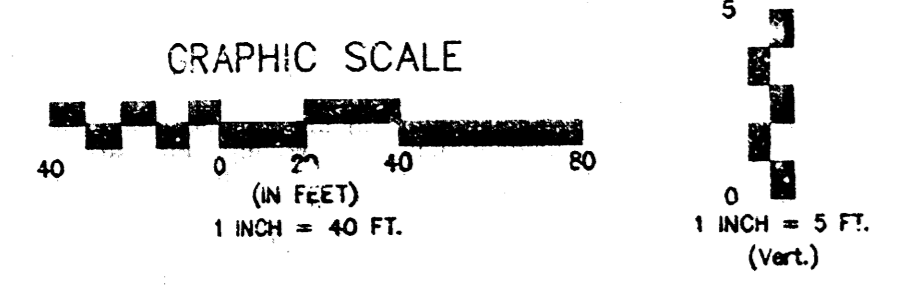
POE & ASSOCIATES OF KANSAS, INC. Consulting Engineers 420 N. Oliver, Suite 110 • Wichita, KS 67208 • 316/266-2114	
ENGINEER: P. H. H. H. DRAFTER: S. Schmidt DATE: June 1994 SHEET: 4 of 11	Aberdeen First Addition Sanitary Sewer - Line No. 3 City of Wichita, Kansas Project No. 468-82382 Index Code: 741800

P:\WP5\BGA\PL571\BGAZ-SS - Med. May 4 16:03:10 1994 - Steve Schmitt



P.O.E. & ASSOCIATES OF KANSAS, INC.
 Consulting Engineers
 434 N. Oliver Suite 110 • Wichita KS 67208 • 316/685-1114
 ENGINEER: P. Hill
 REV. TECH: S. Schmiel
 CAD TECH: S. Schmiel
 DATE: June 1994
Aberdeen First Addition
Sanitary Sewer - Line No. 4 & 5
City of Wichita, Kansas
 Project No. 468-82387
 Index Code 741900
 SHEET 5 of 11

F:\APPS\UCAD\1531\BASE-SS - Wed May 4 10:05:15 1994 - Steve Schmidt

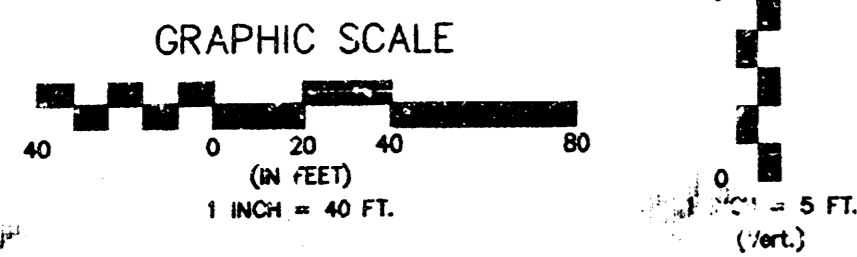


POE & ASSOCIATES OF KANSAS, INC.
 Consulting Engineers
 434 N. Over Suite 110 Wichita KS 67208 316/685-4114

ENGINEER: K. HSJ
 ENG. TICKET: S. Schmitt
 CAP. TICKET: S. Schmitt
 DATE: June 1994
 SHEET: 6 OF 11

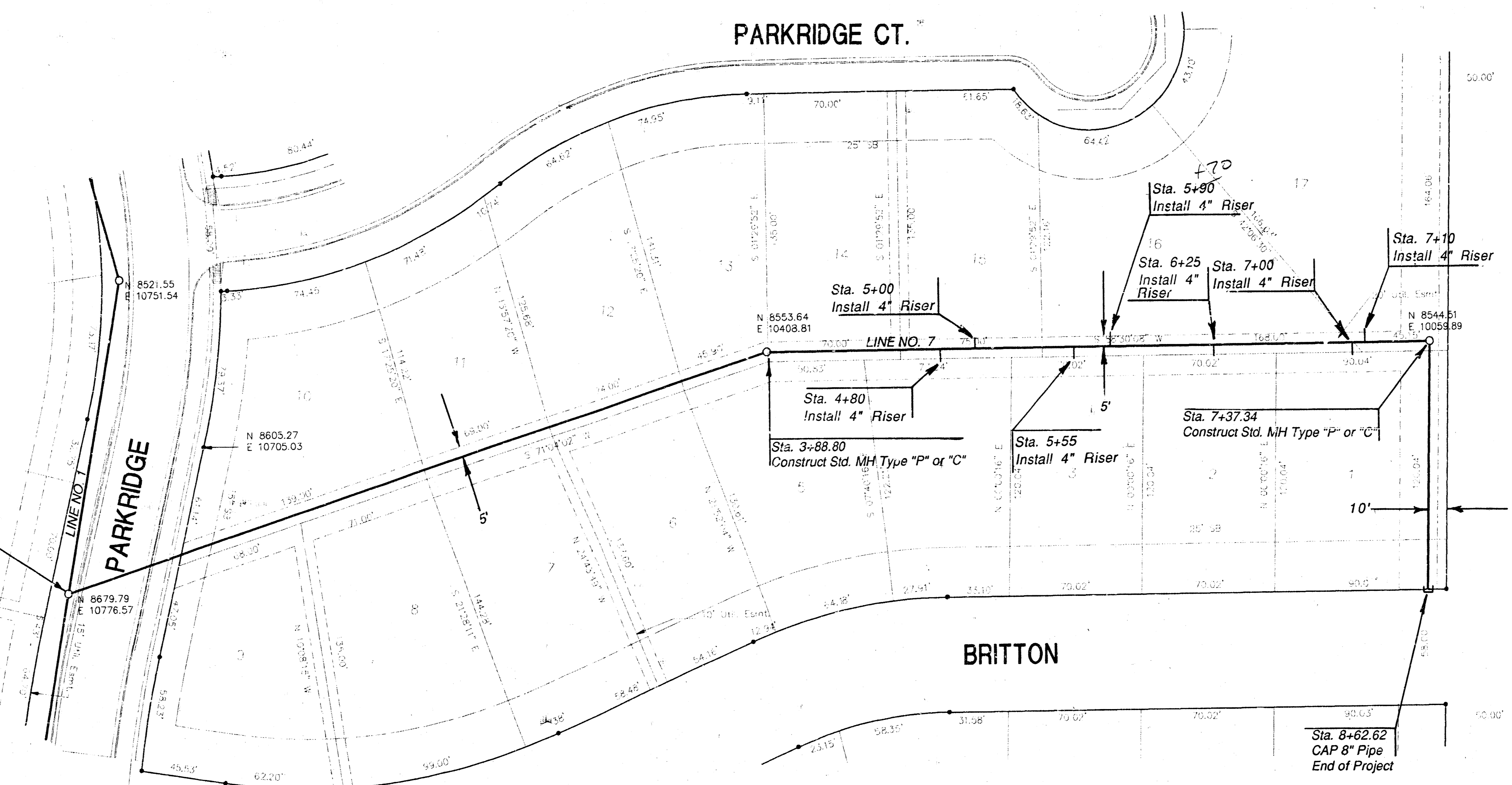
Aberdeen First Addition
 Sanitary Sewer - Line No. 6
 City of Wichita, Kansas
 Project No. 468-82382
 Index Code 741900

F:\APP\DATA\931\BASE-55 Mod May 4 15:24:57 1994 Steve Schmidt



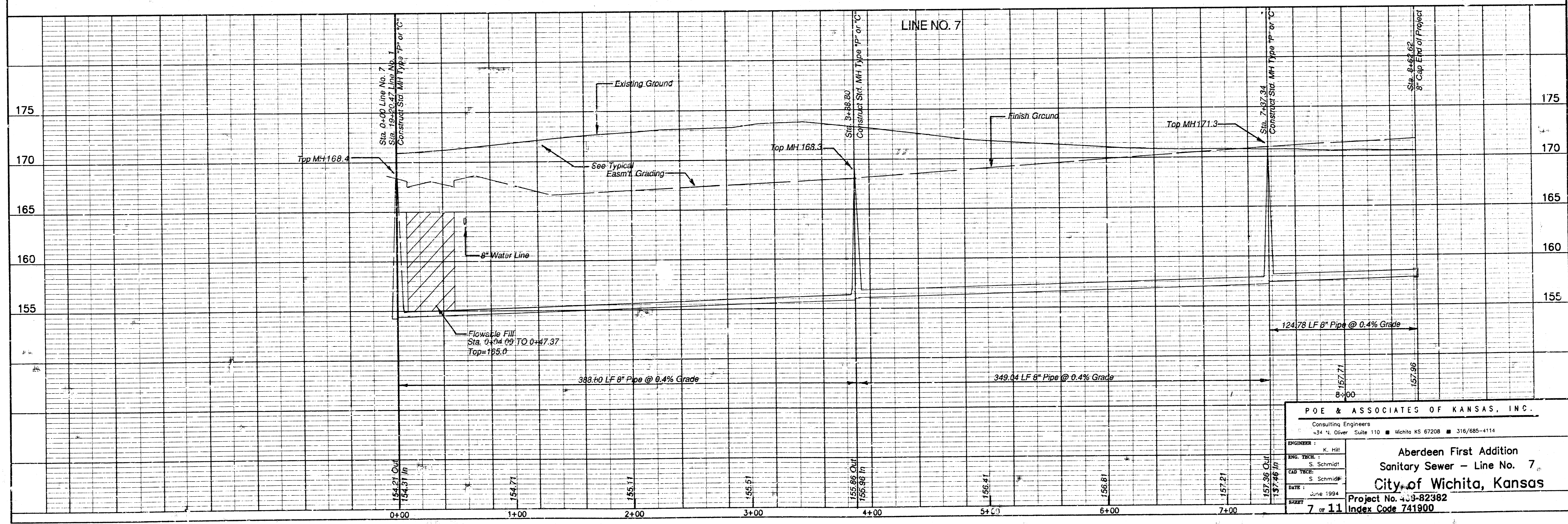
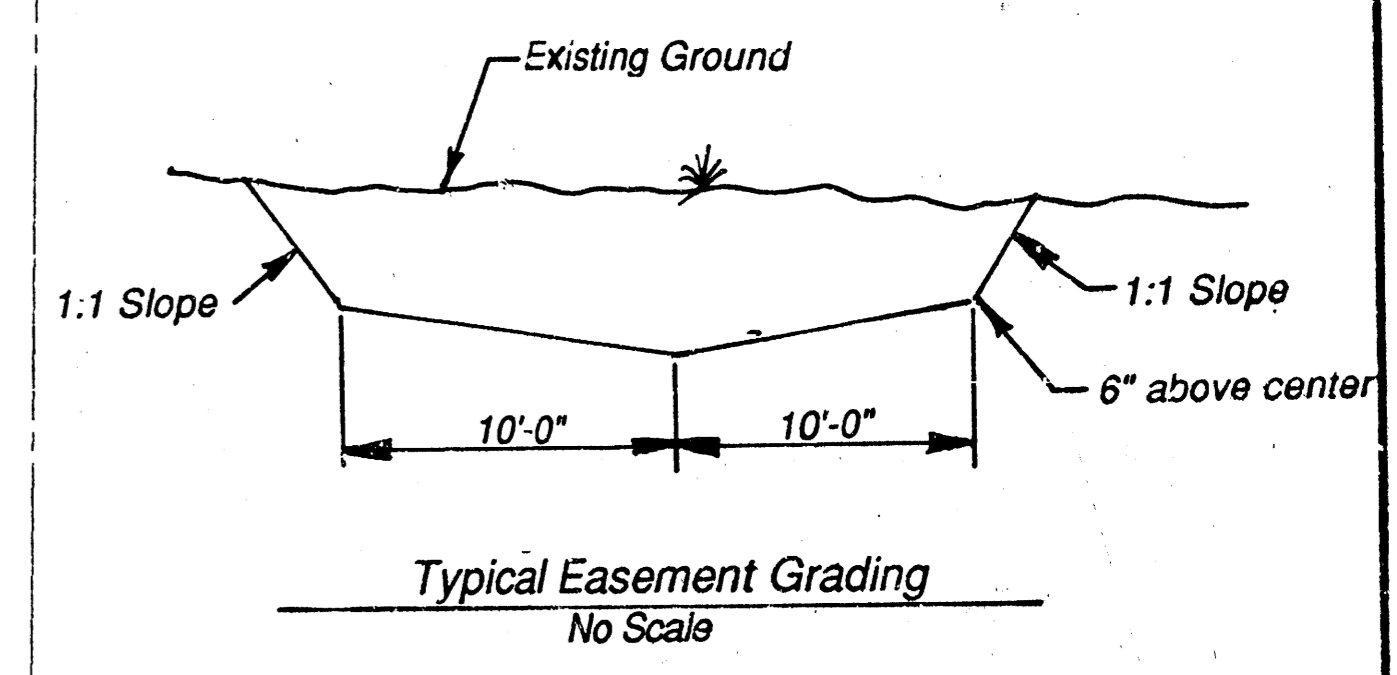
Sta. 0+00 Line No. 7
Sta. 19+20.47 Line No. 1
Construct Std. MH Type "P" or "C"

Riser Summary - Sheet 7			
Station	Size	Flow Line	Top of Riser
4+80	4"	156.33	163.0
5+00	4"	156.41	163.0
5+55	4"	156.63	163.5
5+70	4"	156.69	163.5
6+25	4"	156.91	164.0
7+00	4"	157.21	165.0
7+10	4"	157.25	165.0



119TH STREET

Note: Extra dirt from easement grading shall be wasted on adjacent lots.



POE & ASSOCIATES OF KANSAS, INC.
Consulting Engineers
34 N. Oliver Suite 110 Wichita KS 67208 316/685-4114

ENGINEER: K. Hill
ENG. CHECK: S. Schmidt
CAD DRAWER: S. Schmidt
DATE: June 1994
SHEET: 7 of 11

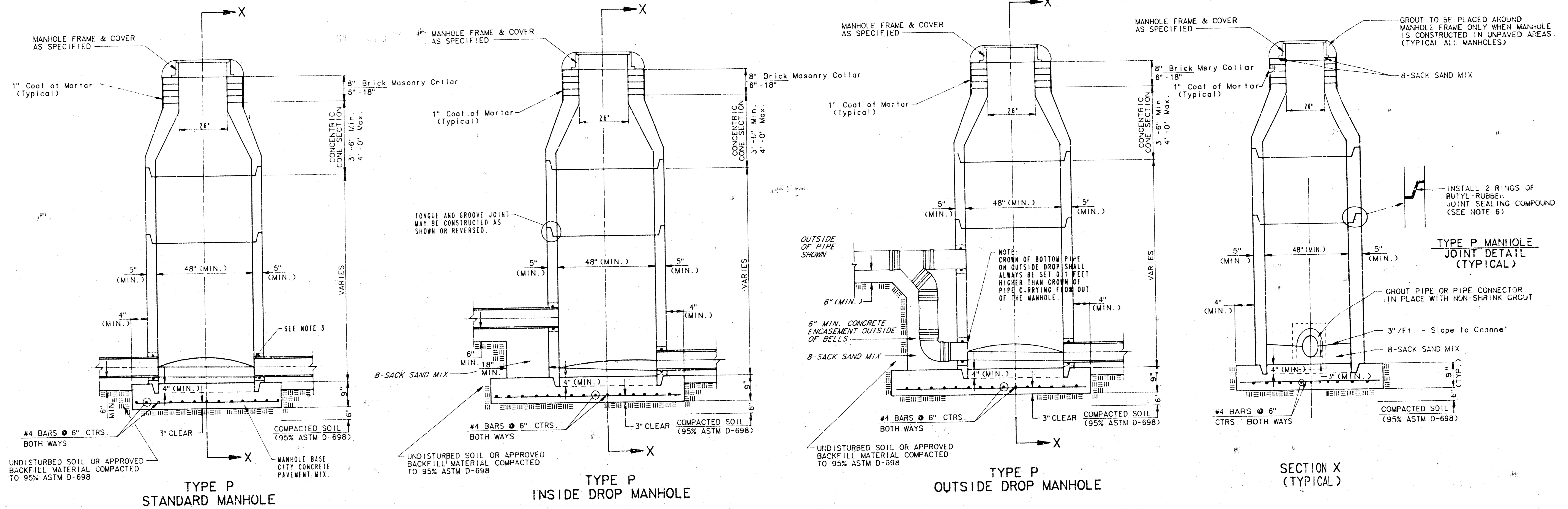
Aberdeen First Addition
Sanitary Sewer - Line No. 7
City of Wichita, Kansas
Project No. 4-3-82382
Index Code 741900

SEWER APPURTENANCES DETAILS

ADOPTED AS STANDARD DESIGN

BY

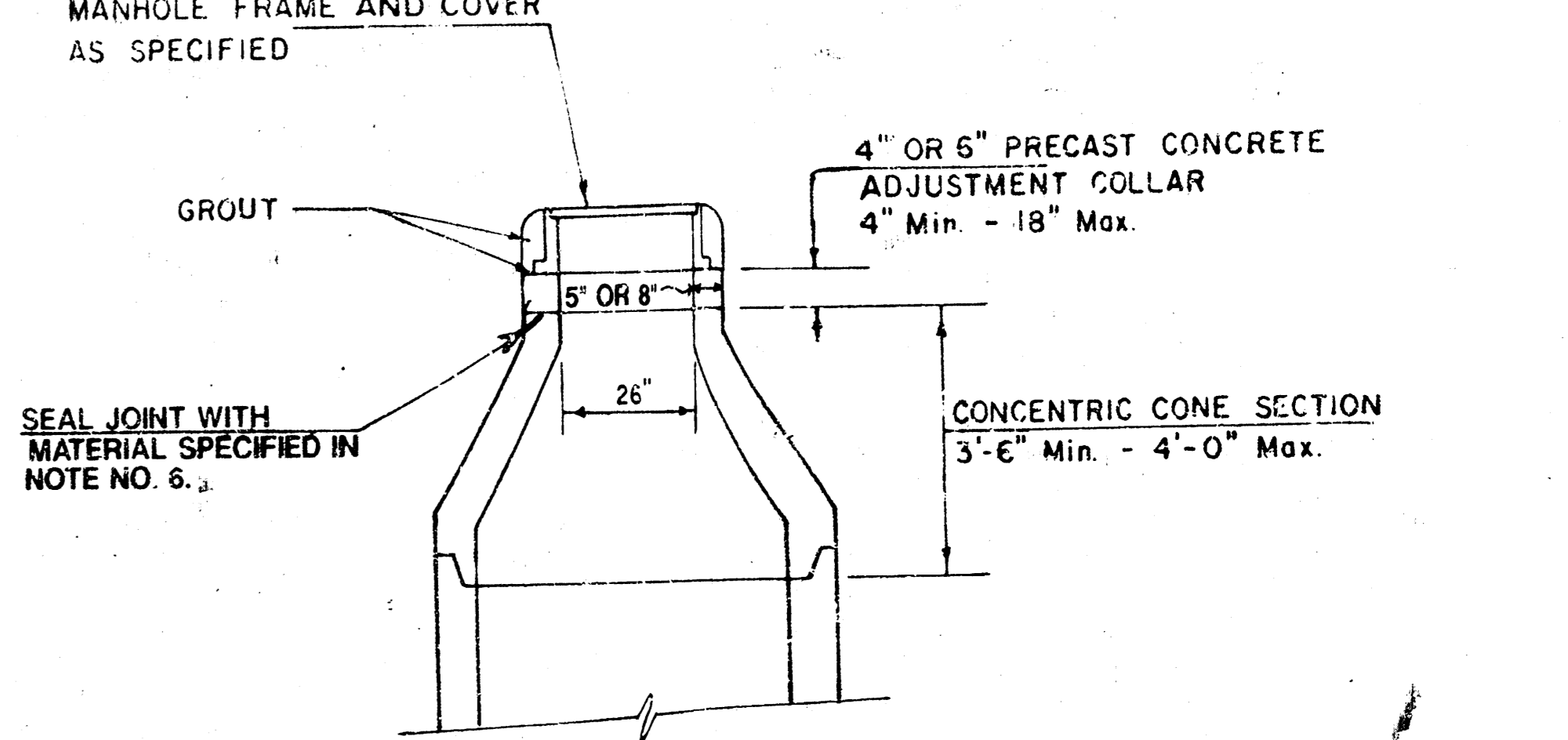
CITY OF WICHITA



- GENERAL NOTES**
PRECAST MANHOLE NOTES
- ALL PRECAST CONCRETE MANHOLE SECTIONS SHALL CONFORM TO THE LATEST REVISION OF A.S.T.M. C478 AS MODIFIED BY THE SPECIFICATIONS.
 - NON-SHRINK GROUT SHALL BE NON-METALLIC TYPE.
 - APPROVED FLEXIBLE WATERSTOP GASKETS SHALL BE INSTALLED TO JOIN THE SEWER TO THE MANHOLE WALL WHEN A.B.S. COMPOSITE PIPE OR P.V.C. PIPE IS USED. FOR OTHER TYPES OF PIPE THE SEWER SHALL BE GROUTED IN PLACE WITH NON-SHRINK GROUT. THE SEWER PIPE SHALL BE SUPPORTED WITH CONCRETE ENCASEMENT A MINIMUM OF 3 FEET FROM THE MANHOLE WALL AND TO THE FIRST JOINT FOR V.C.P. SUCH THAT THE JOINT REMAINS FLEXIBLE.
 - ALL INSIDE SURFACES OF THE CONCRETE MANHOLE WHICH WOULD BE EXPOSED TO SEWER GAS SHALL BE COATED WITH 2 COATS TRENCH SERIES 66 HI-BUILD EPOXYKOTE, DRY THICKNESS OF 8 MILS (MIN.)
 - EXTERIOR MANHOLE WALLS SHALL BE COATED WITH 1 COAT MOBILARMA 633 BITUMINOUS COATING.
 - JOINT SEALING COMPOUND SHALL BE KENT SEAL NO. 2 OR APPROVED EQUAL.
 - PRECAST MANHOLES SHALL BE SET AT LEAST 4 INCHES INTO THE MANHOLE BASE.
 - TOP OF MANHOLE FLOOR SLAB SHALL BE AT LEAST 3 INCHES BELOW THE FLOW LINE OF THE OUTLET PIPE TO INSURE SUFFICIENT MINIMUM THICKNESS OF SHAPED INVERT.
 - LIFTING HOLES SHALL BE FILLED WITH NON-SHRINK GROUT AND THE INTERIOR SURFACE COATED AS SPECIFIED.
 - MORTAR USED IN MASONRY CONSTRUCTION SHALL CONTAIN 8 SACKS OF CEMENT PER CUBIC YARD. CONCRETE USED IN MANHOLE BASES SHALL CONFORM TO THE REQUIREMENTS OF CONCRETE FOR CONCRETE PAYMENT CONSTRUCTION AS SPECIFIED IN THE CITY STANDARD PAVING SPECIFICATIONS USING CITY CONCRETE PAYMENT MIX WITHOUT AIR ENTRAINING ADMIXTURE. MORTAR SHALL BE PLACED AROUND THE MANHOLE RING AS SHOWN ON THE DRAWINGS WHEN MANHOLES ARE CONSTRUCTED IN UNPAVED AREAS. MANHOLES CONSTRUCTED WHERE PIPE SIZES ARE SMALLER THAN 24" SHALL HAVE AN INSIDE DIAMETER OF 4". MANHOLES CONSTRUCTED WHERE PIPE SIZES ARE 24" OR LARGER SHALL HAVE AN INSIDE DIAMETER OF 5". COMPLETED MANHOLE SHALL BE WITHOUT LEAKS AND WATER TIGHT.

- REINFORCING STEEL SHALL BE INSTALLED IN THE MANHOLE BASES AND SHALL CONSIST OF NO. 4 BARS PLACED ON 6" CENTERS IN BOTH DIRECTIONS. THE MANHOLE BASE REINFORCEMENT SHALL BE PLACED AT LEAST 3" ABOVE THE BOTTOM OF THE MANHOLE BASE. ALL COSTS FOR FURNISHING AND INSTALLING REINFORCING STEEL SHALL BE INCLUDED IN THE UNIT PRICE BID FOR THE MANHOLE.
- OPENINGS SHALL BE CUT INTO THE MANHOLE WALL WHEN OUTSIDE DROPS ARE CONSTRUCTED ON EXISTING MANHOLES. SUCH OPENINGS CUT INTO EXISTING MANHOLES SHALL BE AS SMALL AS PRACTICAL TO FACILITATE INSTALLING AND GROUTING THE NEW PIPE IN PLACE. WATERSTOP GASKETS SHALL BE USED WITH P.V.C. AND A.B.S. COMPOSITE PIPE. THE NEW PIPE SHALL BE GROUTED INTO THE OPENING USING AN APPROVED NONSHRINK GROUT FOR THE FULL MANHOLE WALL THICKNESS. THE EXTERIOR OF THE COMPLETED CONNECTION SHALL BE SEALED WITH AN APPROVED BITUMINOUS COATING SUCH THAT THE CONNECTION WILL BE WATER TIGHT. FLOOR OF MANHOLE SHALL BE MODIFIED TO FORM NEW FLOW CHANNEL FOR THE NEW CONNECTION AS INDICATED BY THE DRAWING. THIS WORK, INCLUDING MODIFICATION OF MANHOLE FLOOR, SHALL BE PAID FOR AT THE UNIT PRICE BID FOR OUTSIDE DROP STACK CONSTRUCTED ON EXISTING MANHOLE.
- THE FLOORS OF ALL MANHOLES SHALL BE SHAPED WITH FLOW CHANNELS SUCH THAT THE MANHOLES WILL BE SELF-CLEANING AND FREE OF AREAS WHERE SOLIDS COULD BE DEPOSITED AS SEWAGE FLOWS THROUGH THE MANHOLE FROM ALL INLET PIPES TO THE OUTLET PIPE. FLOW CHANNELS SHALL BE FORMED TO MATCH THE BOTTOM HALVES OF THE INFLOWING PIPES AND THE OUTFLOWING PIPE AS SHOWN BY THE DRAWINGS EXCEPT FOR INSIDE DROP MANHOLES. FLOW CHANNELS FOR INSIDE DROP MANHOLES SHALL BE CONSTRUCTED AS INDICATED BY THE DRAWING. MANHOLE FLOORS SHALL HAVE SLOPES OF 3 INCHES PER FOOT IN THE AREAS OUTSIDE OF THE FLOW CHANNELS SLOPED TOWARD THE FLOW CHANNELS. PIPES LAID THROUGH MANHOLES SHALL HAVE THE TOP HALF REMOVED TO REAT LINE FLOORS SHALL THEN BE SHAPED AROUND THE BOTTOM HALF OF THE PIPE WHICH FORMS THE FLOW CHANNEL.
- PIPES INSTALLED WITHIN THE EXCAVATION MADE FOR THE MANHOLE SHALL BE CRADLED WITH CONCRETE TO THE LIMITS OF THE MANHOLE EXCAVATION. WHEN CLAY PIPE IS USED, THE CRADLE SHALL EXTEND TO THE FIRST JOINT OUTSIDE THE MANHOLE. THE CRADLE SHALL BE TERMINATED AT THE CLAY PIPE JOINT IN A MANNER WHICH WILL MAINTAIN THE FLEXIBILITY OF THE JOINT. COST OF CRADLE WITHIN MANHOLE EXCAVATION OR TO CLAY PIPE JOINTS ADJACENT TO MANHOLE SHALL BE INCLUDED IN THE UNIT PRICE BID FOR THE MANHOLE.

- MANHOLE COVER CASTINGS AND MANHOLE FRAME CASTINGS SHALL CONFORM TO THE REQUIREMENTS AS INDICATED IN THE STANDARD SPECIFICATIONS AND AS SHOWN IN THE STANDARD DETAIL DRAWING.
- THE VERTICAL FREE FALL DROP INSIDE MANHOLES SHALL NOT EXCEED 2'. THE CROWNS OF INFLOWING PIPES SHALL NEVER BE SET LOWER THAN THE CROWN OF THE OUTFLOWING PIPE.
- STANDARD MANHOLES AND STANDARD INSIDE DROP MANHOLES SHALL BE BID AS STANDARD MANHOLES FOR THE TYPE AND DIAMETER INDICATED. OUTSIDE DROP MANHOLES SHALL BE BID AS STANDARD OUTSIDE DROP MANHOLES FOR THE TYPE AND DIAMETER INDICATED. ALL MANHOLE DIAMETERS WILL BE 4' UNLESS INDICATED OTHERWISE.
- A BRICK MASONRY COLLAR SHALL BE INSTALLED BETWEEN THE CAST IRON FRAME AND THE CONCENTRIC CONE. THE COLLAR WILL HAVE 8" WALLS AND A VERTICAL HEIGHT OF 6" MINIMUM AND 18" MAXIMUM. A 1" COAT OF MORTAR WILL BE PLASTERED ON THE OUTSIDE OF THE COLLAR.



Sheet 8 of 11
ABERDEEN FIRST ADDITION
 PROJECT CODE: 468-82382
 INDEX CODE: 741900
 REVISED NOV. 1993
 NOTE NO. 16 REVISED JAN. 1991
 Revised 3-21-89
 Revised 8-10-88

10 1 1 54

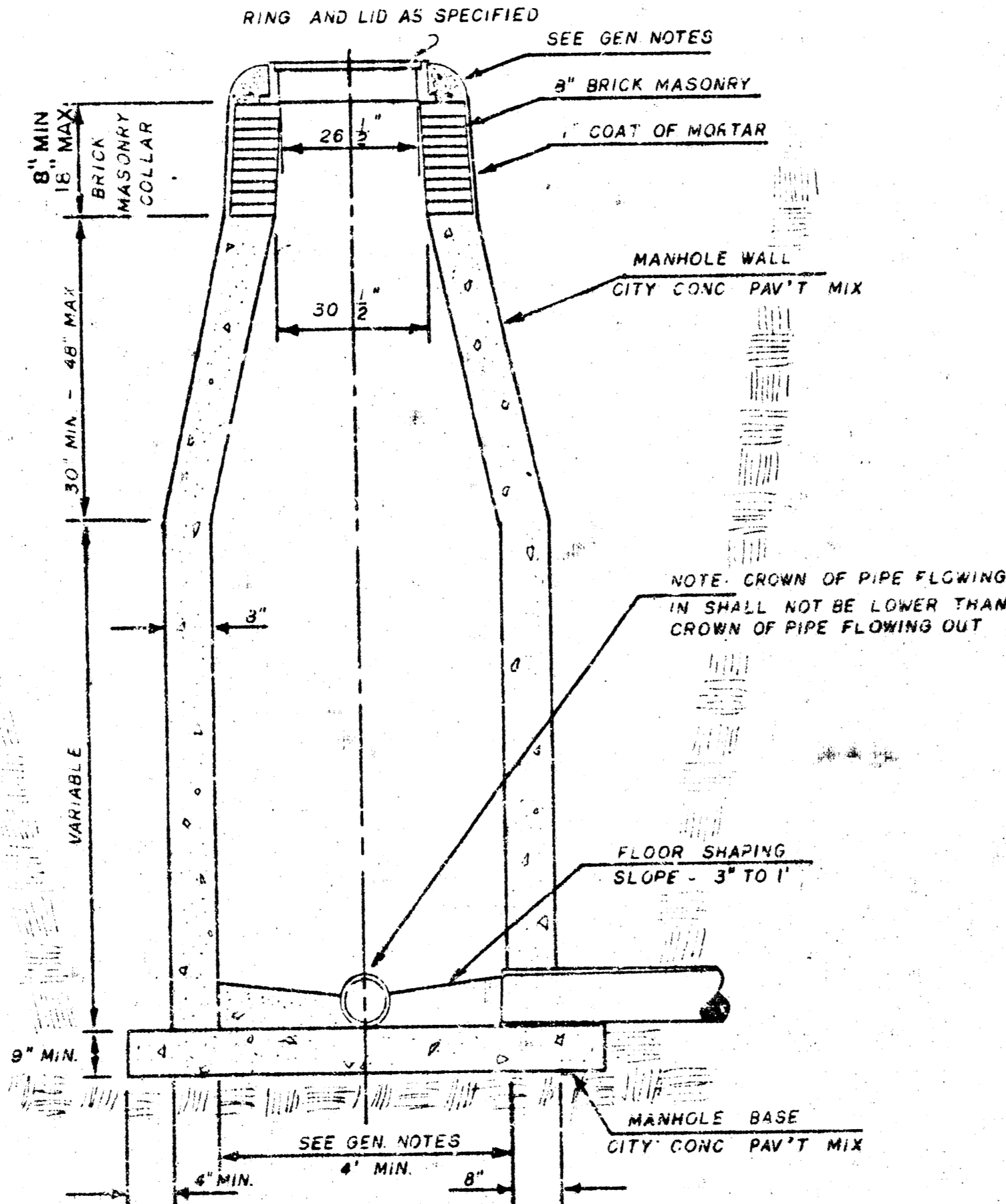
SEWER APPURTENANCES DETAILS

ADOPTED AS STANDARD DESIGN

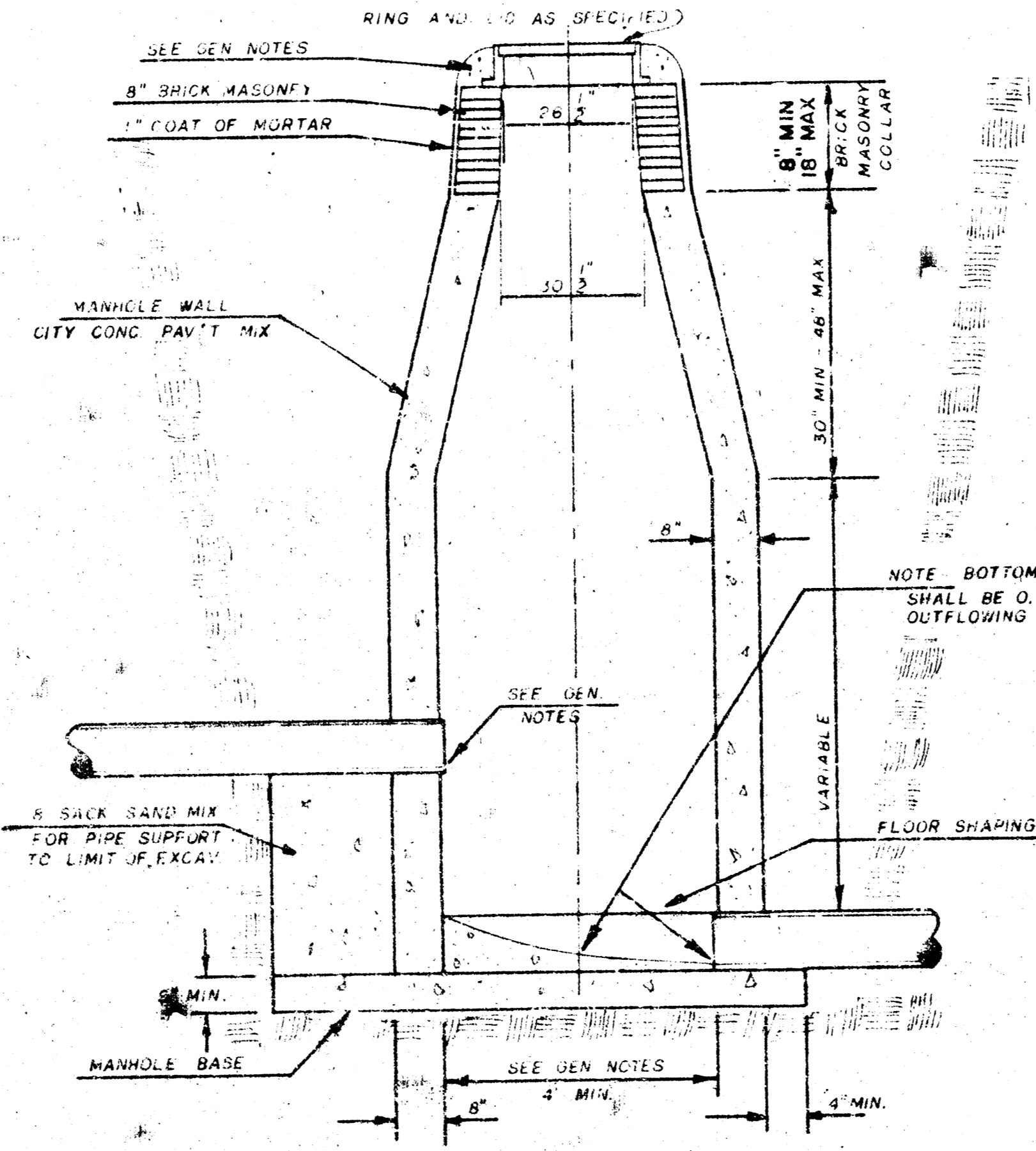
BY

City of Wichita, Kansas

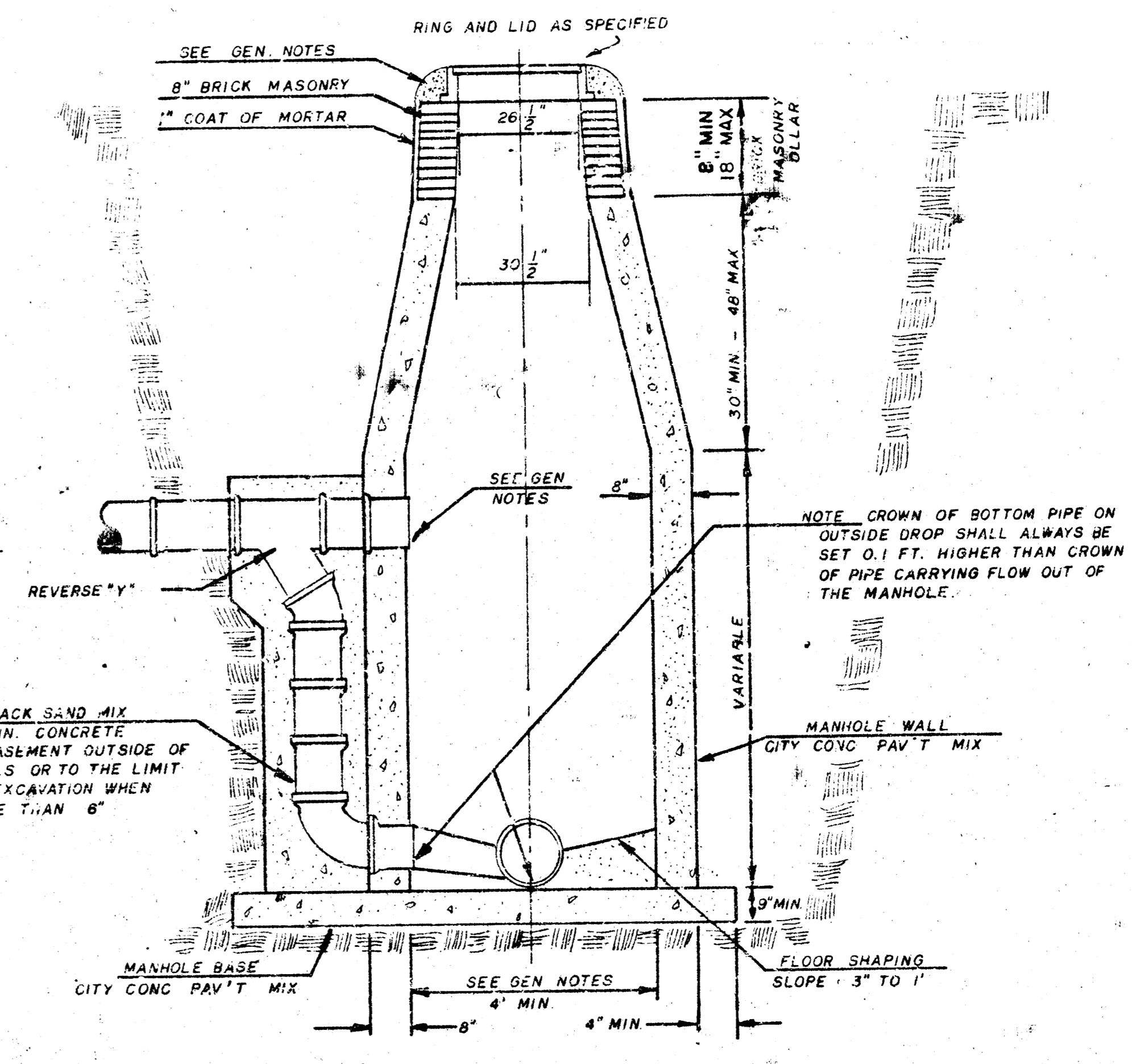
STANDARD MANHOLE TYPE "C"



INSIDE DROP MANHOLE TYPE "C"



OUTSIDE DROP MANHOLE TYPE "C"



GENERAL NOTES

- MORTAR USED IN MASONRY CONSTRUCTION SHALL CONTAIN 8 SACKS OF CEMENT PER CUBIC YARD. CONCRETE USED IN MANHOLE WALLS AND BASES SHALL CONFORM TO THE REQUIREMENTS OF CONCRETE FOR CONCRETE PAVEMENT CONSTRUCTION AS SPECIFIED IN THE CITY STANDARD PAVING SPECIFICATIONS USING CITY CONCRETE PAVEMENT MIX WITHOUT AIR ENTRAINING ADJUTIVE. MORTAR SHALL BE PLACED AROUND THE MANHOLE RING AS SHOWN ON THE DRAWINGS WHEN MANHOLES ARE CONSTRUCTED IN UNPAVED AREAS. TYPE "C" MANHOLES CAN BE CONSTRUCTED ONLY WHERE PIPE SIZES ARE 4" OR SMALLER. THE INSIDE DIAMETER OF TYPE "C" MANHOLES SHALL BE 4". COMPLETED MANHOLE SHALL BE WITHOUT LEAKS AND WATER TIGHT.
- REINFORCING STEEL SHALL BE INSTALLED IN THE MANHOLE BASE. REINFORCING STEEL SHALL CONSIST OF NO. 4 BARS PLACED ON 6" CENTERS IN BOTH DIRECTIONS. REINFORCING STEEL SHALL BE PLACED 6" ABOVE THE BOTTOM OF THE MANHOLE BASE. COST OF FURNISHING AND INSTALLING REINFORCING STEEL SHALL BE INCLUDED IN THE UNIT PRICE BID FOR THE MANHOLE.
- AN OPENING SHALL BE CUT IN THE MANHOLE WALL FOR THE UPPER INLET PIPE FOR INSIDE AND OUTSIDE DROP MANHOLES. THE UPPER INLET PIPE SHALL BE SHOULDED INTO THIS OPENING WITH NON-SHRINK GROUT. THE EXTERIOR OF THIS COMPLETED CONNECTION SHALL BE SEALED WITH AN APPROVED BITUMINOUS COATING SUCH THAT THE CONNECTION WILL BE WATER TIGHT.
- THE FLOORS OF ALL MANHOLES SHALL BE SHAPED WITH FLOW CHANNELS SUCH THAT THE MANHOLES WILL BE SELF CLEANING AND FREE OF AREAS WHERE SOLIDS COULD BE DEPOSITED AS SEWAGE FLOWS THROUGH THE MANHOLE FROM ALL INLET PIPES TO THE OUTLET PIPE. FLOW CHANNELS SHALL BE FORMED TO MATCH THE BOTTOM HALVES OF THE INFLOWING PIPES AND THE OUTFLOWING PIPE AS SHOWN BY THE DRAWINGS EXCEPT FOR INSIDE DROP MANHOLES. FLOW CHANNELS FOR INSIDE DROP MANHOLES SHALL BE CONSTRUCTED AS INDICATED BY

THE DRAWING. MANHOLE FLOORS SHALL HAVE SLOPES OF 3 INCHES PER FOOT IN THE AREAS OUTSIDE OF THE FLOW CHANNELS SLOPED TOWARD THE FLOW CHANNELS. PIPES LAID THROUGH MANHOLE SHALL HAVE THE TOP HALF REMOVED TO HEAT LINES FOR THE FULL INSIDE DIAMETER OF THE MANHOLE. MANHOLE FLOORS SHALL THEN BE SHAPED AROUND THE BOTTOM HALF OF THE PIPE WHICH FORMS THE FLOW CHANNEL.

- PIPES INSTALLED WITHIN THE EXCAVATION MADE FOR THE MANHOLE SHALL BE CRADLED WITH CONCRETE TO THE LIMITS OF THE MANHOLE EXCAVATION. WHEN CLAY PIPE IS USED, THE CRADLE SHALL EXTEND TO THE FIRST JOINT OUTSIDE THE MANHOLE. THE CRADLE SHALL BE TERMINATED AT THE CLAY PIPE JOINT IN A MANNER WHICH WILL MAINTAIN THE FLEXIBILITY OF THE JOINT. COST OF CRADLE WITHIN MANHOLE EXCAVATION OR TO CLAY PIPE JOINTS ADJACENT TO MANHOLE SHALL BE INCLUDED IN THE UNIT PRICE BID FOR THE MANHOLE.
- MANHOLE COVER CASTINGS AND MANHOLE FRAME CASTINGS SHALL CONFORM TO THE REQUIREMENTS AS INDICATED IN THE STANDARD SPECIFICATIONS AND AS SHOWN IN THE STANDARD DETAIL DRAWING.
- THE VERTICAL FREE FALL DROP INSIDE MANHOLES SHALL NOT EXCEED 2'. THE CROWNS OF INFLOWING PIPES SHALL NEVER BE SET LOWER THAN THE CROWN OF THE OUTFLOWING PIPE.

STANDARD MANHOLES TYPE "C" AND STANDARD INSIDE DROP MANHOLES TYPE "C" SHALL BE BID AS STANDARD MANHOLES FOR THE TYPE AND DIAMETER INDICATED. OUTSIDE DROP MANHOLES TYPE "C" SHALL BE BID AS STANDARD OUTSIDE DROP MANHOLES FOR THE TYPE AND DIAMETER INDICATED. ALL MANHOLE DIAMETERS WILL BE 4" UNLESS INDICATED OTHERWISE.

Sheet 9 of 11

ABERDEEN FIRST ADDITION
PROJECT NO. 468-82382
INDEX CODE: 741900
NOTE NO. 7 REVISED JAN 1991

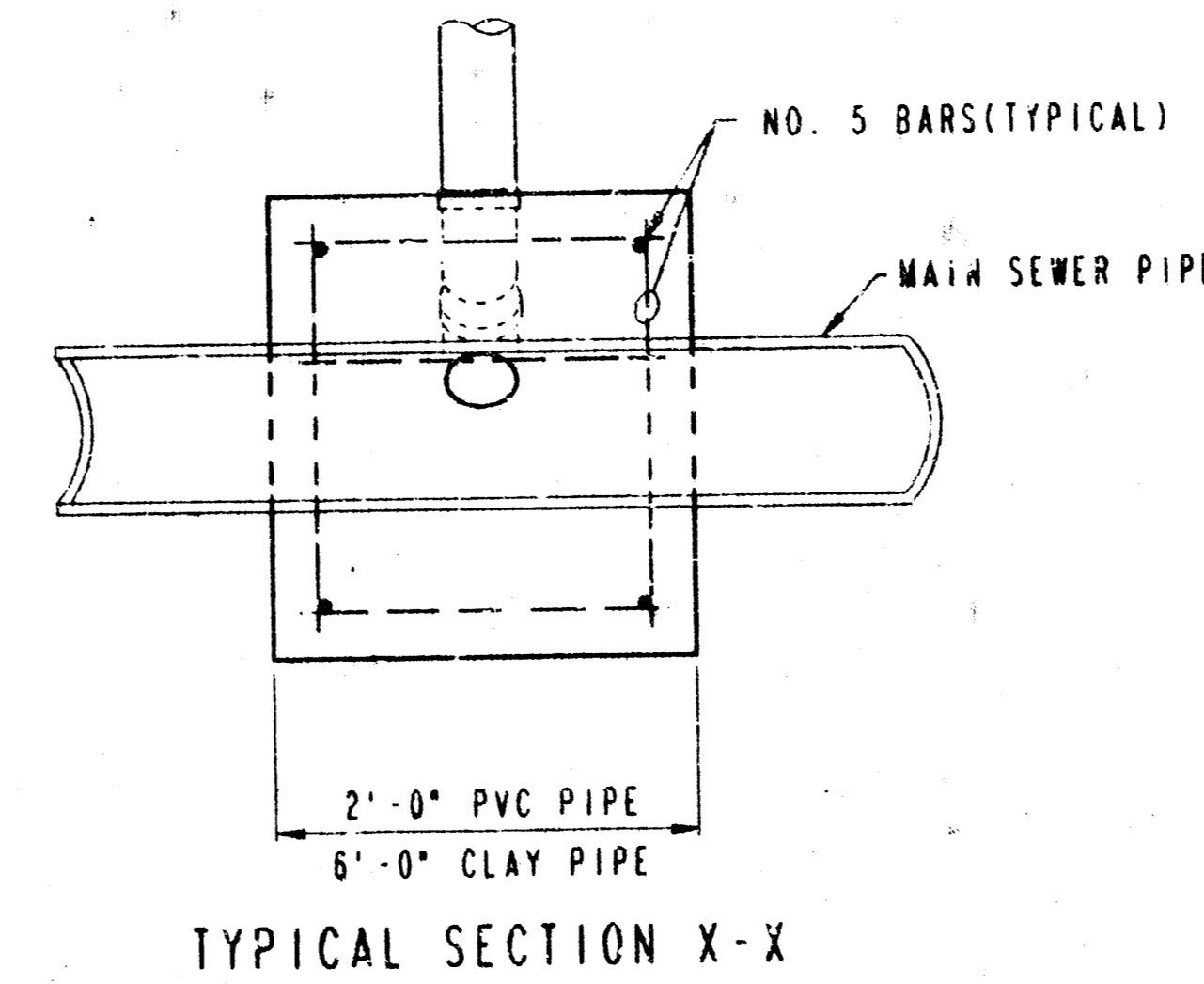
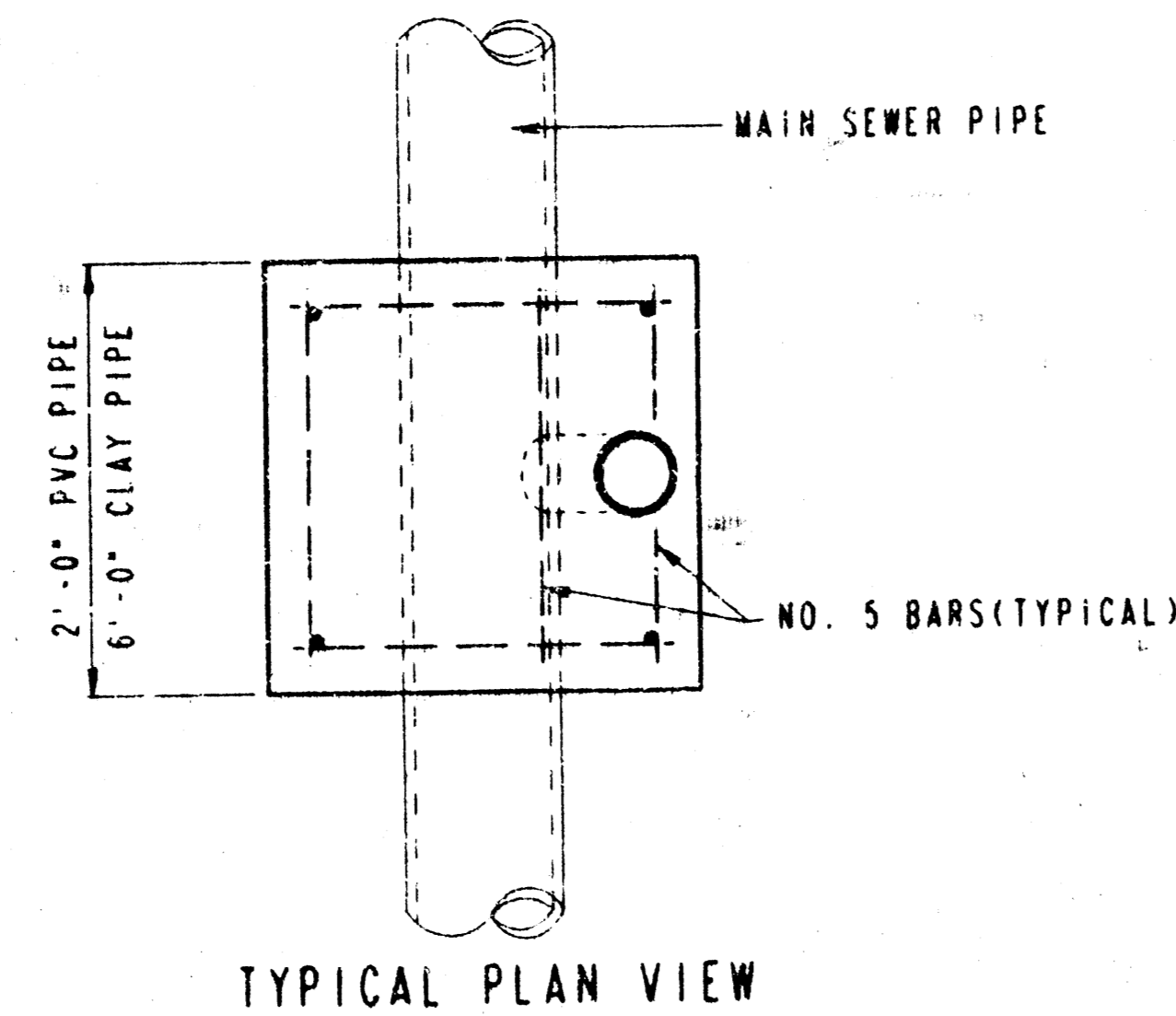
VERTICAL RISER DETAILS

ADOPTED AS STANDARD DESIGN

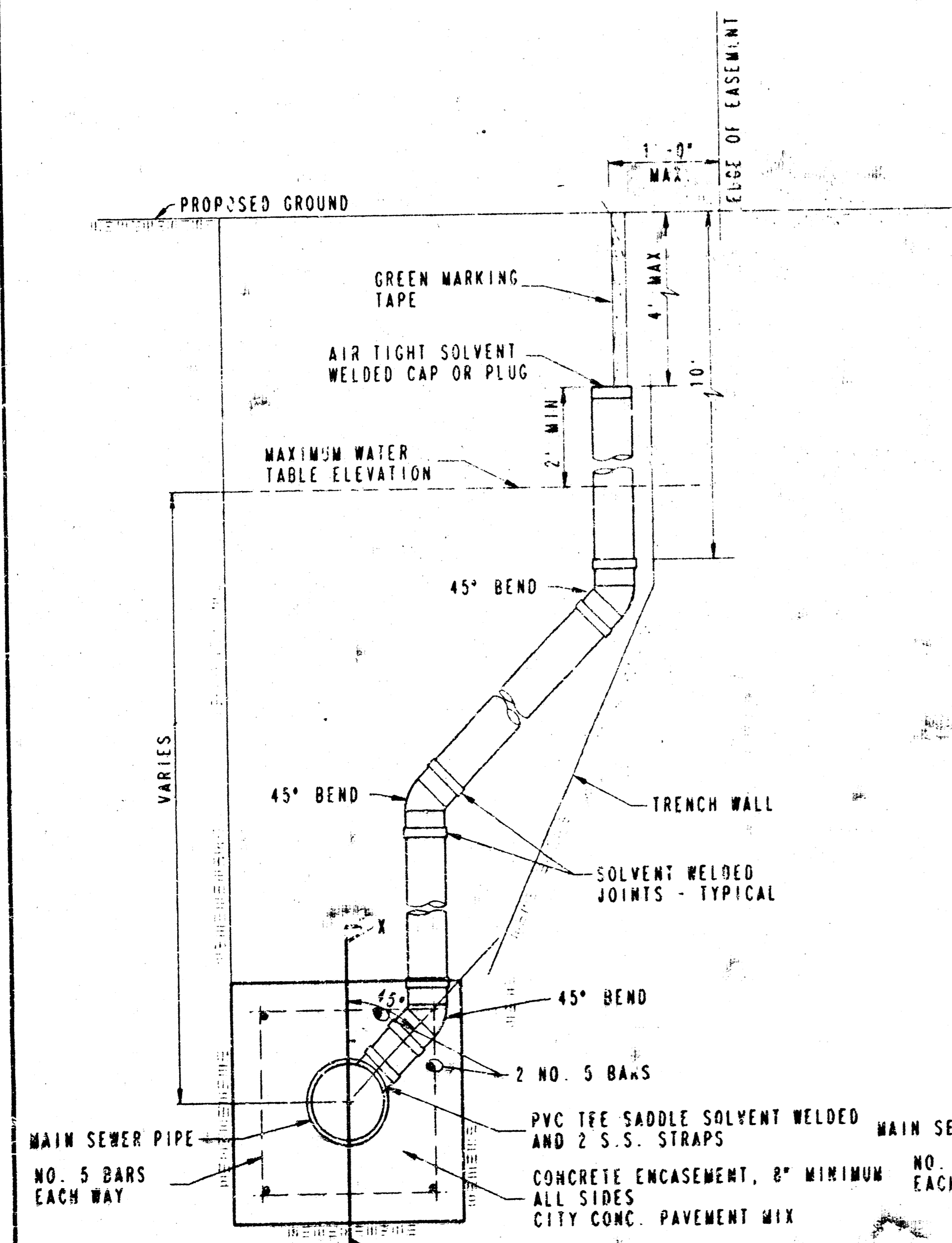
BY

CITY OF WICHITA, KANSAS

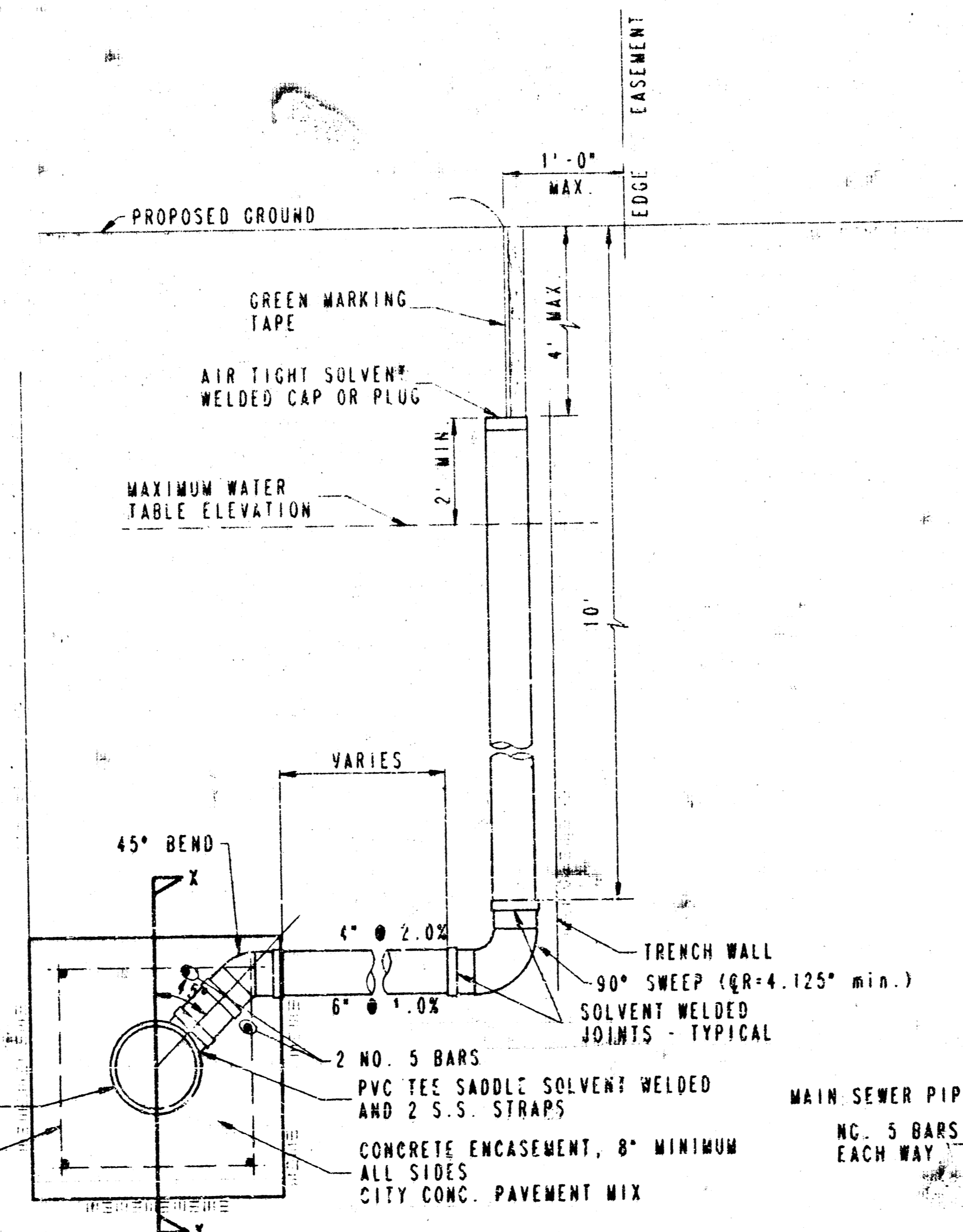
OCTOBER 1992



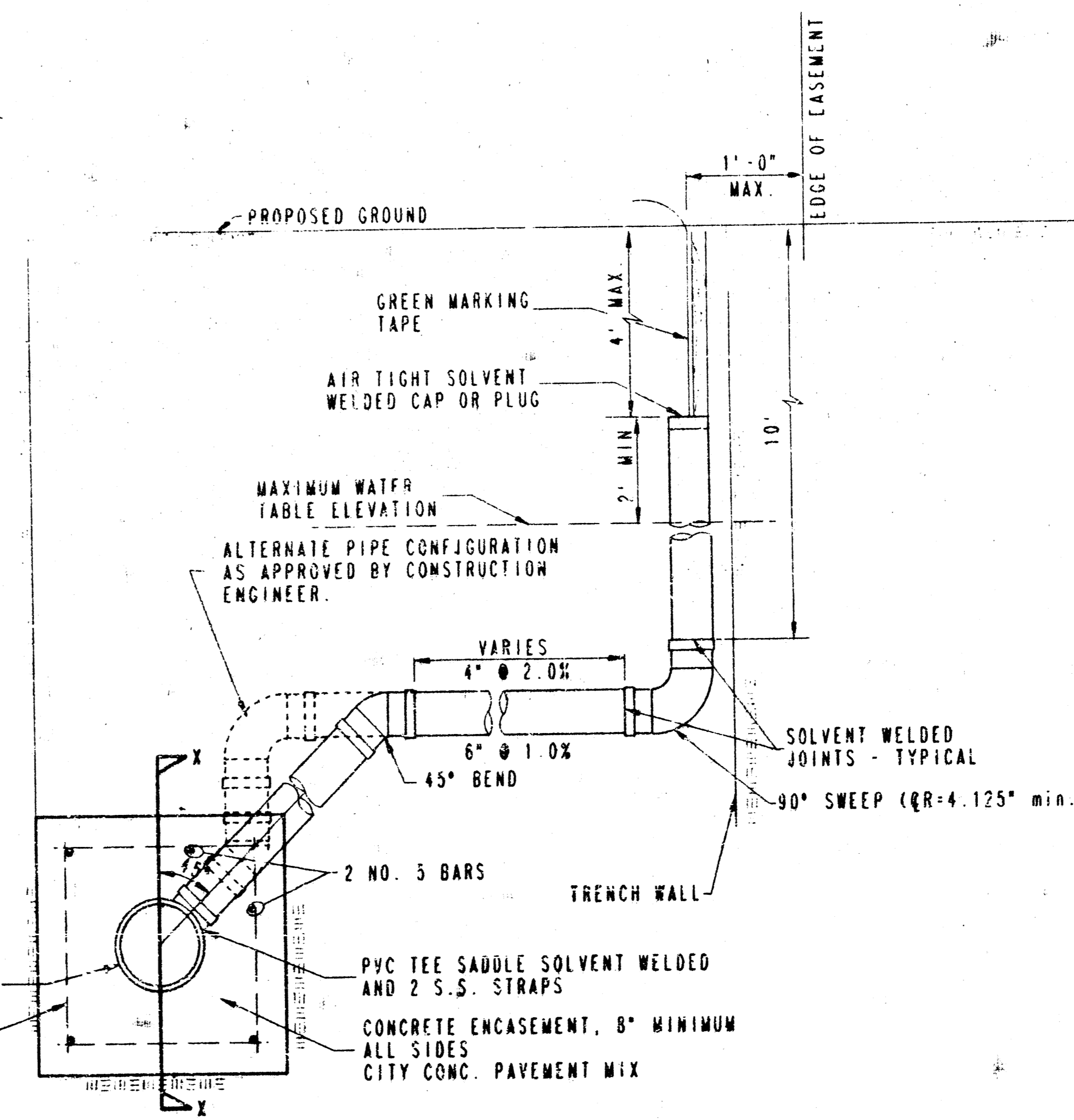
DATE	
BY	
PLAN	
DESIGNED	
CHECKED	



METHOD "A"



METHOD "B"

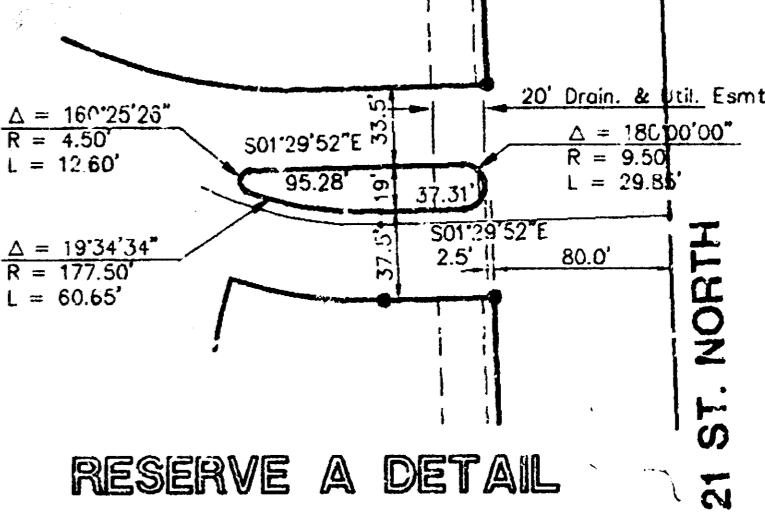
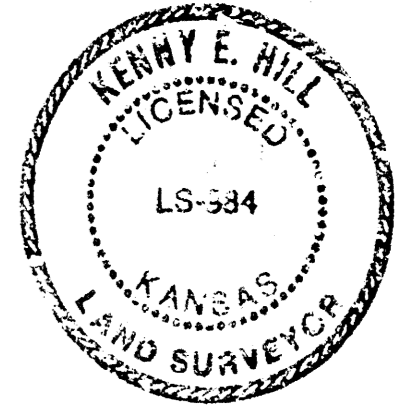
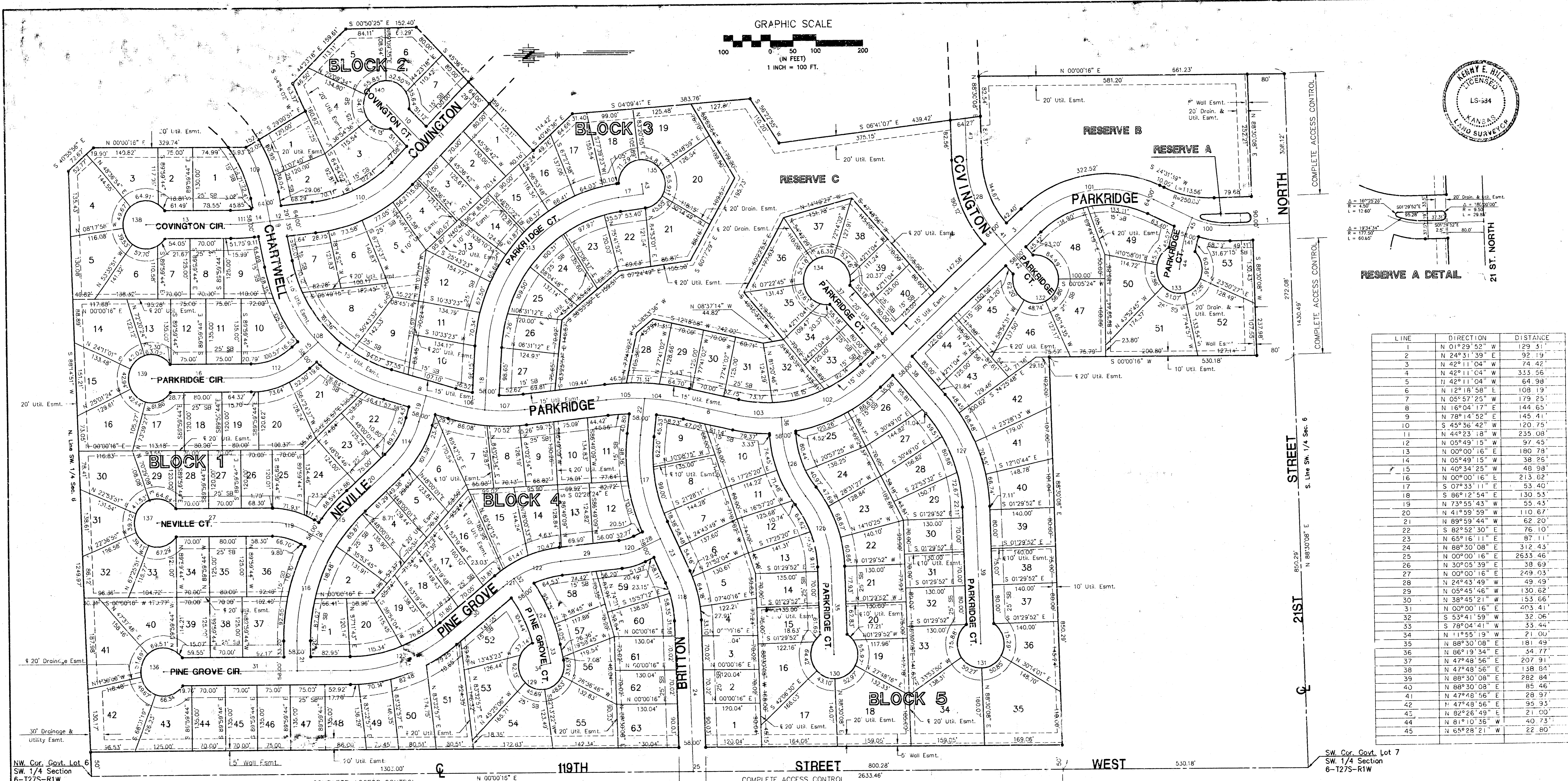


METHOD "C"

NOTE: RISER PIPE REQUIREMENTS AT MANHOLE STUBS SHALL BE SIMILAR TO THOSE SHOWN ABOVE.

GENERAL NOTES

- RISERS.** Risers shall be installed to serve all lots or tracts where the sanitary sewer main is below the water table. Risers shall also be installed to serve all lots and tracts where the sanitary sewer main depth is greater than 12 feet below the proposed ground elevation. Installation of risers because of field conditions shall be approved by the Construction Engineer. The location of the risers to serve developed property shall be approved by the property owner and the Construction Engineer.
- PIPE STUBS.** Pipe stubs shall be installed in manholes where locations of manholes will provide satisfactory service connection as determined by the Construction Engineer. The vertical distance between the flowline of the manhole pipe stub and the flowline of the sanitary sewer main out of the manhole shall not exceed 2 feet. Risers shall be utilized at manhole pipe stubs as indicated in Note 1. Manhole pipe stubs shall be set such that the top of the stub is not lower than the top of the sanitary sewer main.
- SIZING.** Pipe stubs and risers shall be sized according to the plans and riser table where risers are indicated by the plans. Where risers or pipe stubs are required because of field conditions, the risers and stubs shall be six-inch diameter for commercial or industrial properties and 4" or 6" diameter for residential properties, based on lot size and sanitary sewer main depth. Sizing of risers and stubs shall be approved by the Construction Engineer prior to installation.
- RISER OR STUB MATERIAL.** Risers and stubs shall be constructed of SDR 35 PVC Pipe or Schedule 40 PVC Pipe, meeting the requirements of the latest revision of A.S.T.M. All pipe joints shall be solvent welded.
- REINFORCED CONCRETE ENCASUREMENT.** Riser connections to clay pipe sanitary sewers shall be reinforced concrete encased both ways from the riser centerline. The reinforced concrete encasement shall extend three feet from the riser centerline or stop at the first sanitary sewer pipe joint within three feet of the riser centerline. Riser connections to PVC Sanitary Sewer mains shall be reinforced concrete encased one foot each way from the riser centerline. The concrete encasement shall be reinforced with reinforcing steel as shown in the appropriate drawings. The concrete shall conform to the City Standard Specifications for concrete pavement.
- BEDDING.** Bedding around the sanitary sewer riser shall be compacted Pipe Bedding Type 1 or 2. The bedding shall be placed and compacted from the depth of the sanitary sewer main to the top of the sanitary sewer riser pipe. Compacted pipe bedding Type 1 or 2 shall be required for all risers whether constructed in vertical wall or sloped wall trenches. Bedding material and construction practices shall be approved by the Construction Engineer prior to installation.
- SUPPORT OF RISERS.** Sanitary sewer riser pipe shall be supported during trench backfill. The riser pipe shall be held in a vertical position at all times until trench backfill and compaction has been completed. Contractor's methods for supporting and backfilling the riser pipe shall be approved by the Construction Engineer.
- PLUGGING.** The ends of the riser pipes and manhole stubs shall be plugged using an airtight solvent welded cap or plug. Cap or plug fittings shall be approved by the Construction Engineer prior to installation. Caps or plugs which do not provide an airtight seal will not be accepted.
- TOP OF THE RISER PIPE.** The top elevation of the sanitary sewer riser pipe shall be built per plan elevations, unless otherwise directed by the Construction Engineer. Where riser elevations are not shown on the plans, the top of the risers shall be set at an elevation four feet below the proposed ground surface. If ground water is encountered, the top of the riser pipe shall be set at an elevation two feet (min.) above the maximum water table elevation, regardless of the riser elevation shown on the plans.
- MARKING.** Locations of the ends of the sanitary sewer riser pipe shall be marked by fastening green colored plastic tape to the end of the riser. The tape shall be supported by a length of wooden 2 x 4, extending from the top of the riser pipe to the proposed ground surface. The green tape shall be visible and extend one foot above the proposed ground surface. The green tape shall be 4 mil Polyethylene film with a minimum width of three inches, specifically manufactured for the purpose of identification of underground sewers.
- LOCATION MEASURES.** The project inspector shall record and document the location of all risers constructed as measured from the nearest manhole, indicating the direction from the manhole, the direction and distance from the manhole, riser size, and elevation of the top of the riser.
- RISER LOCATION.** The riser shall be located per plan if shown. If not shown on the plan, the riser shall be located at the center of the lot, within one foot of the property side of the easement for the lot being served. All riser locations shall be approved by the Construction Engineer prior to installation.
- PAYMENT.** "Sanitary sewer risers" shall be paid for at the contract unit price per each, which price shall be full compensation for all pipe, fittings, marking tape, length of wooden 2 x 4, reinforced concrete encasement, support during backfill, backfill, labor, site restoration, and any other items necessary to complete the work.
"Manhole stubs" shall be paid for at the contract unit price per each, which shall be full compensation for all labor, material, and incidentals necessary to complete the work, including all pipe, fittings, reinforced concrete encasement, and all other items as required and listed for "Sanitary Sewer Risers".



LINE	DIRECTION	DISTANCE
1	N 01°29'52" W	129.51'
2	N 24°31'39" E	92.19'
3	N 42°11'04" W	74.42'
4	N 42°11'04" W	33.56'
5	N 42°11'04" W	64.98'
6	N 12°18'58" E	108.19'
7	N 05°47'25" W	179.25'
8	N 16°04'17" E	144.65'
9	N 78°14'52" E	145.41'
10	S 45°36'42" W	120.75'
11	N 42°23'18" W	235.08'
12	N 05°49'15" W	97.45'
13	N 02°00'16" E	180.78'
14	N 05°49'15" W	38.25'
15	N 40°34'25" W	48.98'
16	N 00°00'16" E	213.62'
17	S 07°33'11" E	53.40'
18	S 86°12'54" E	130.53'
19	N 73°55'43" W	55.43'
20	N 41°59'59" W	110.67'
21	N 89°59'44" W	62.20'
22	S 82°52'30" E	76.10'
23	N 65°16'11" E	87.13'
24	N 88°30'08" E	312.43'
25	N 00°00'16" E	2533.46'
26	N 30°05'39" E	38.69'
27	N 00°00'16" E	249.03'
28	N 24°43'49" W	49.49'
29	N 05°45'46" W	130.62'
30	N 38°45'21" W	53.66'
31	N 00°00'16" E	403.41'
32	S 53°41'59" W	32.06'
33	S 01°29'52" E	33.44'
34	N 11°55'19" W	21.00'
35	N 88°30'08" E	181.49'
36	N 08°19'34" E	44.77'
37	N 47°48'56" E	207.91'
38	N 47°48'56" E	158.84'
39	N 88°30'08" E	282.84'
40	N 88°30'08" E	85.46'
41	N 47°48'56" E	28.37'
42	N 47°48'56" E	95.33'
43	N 82°28'49" E	21.00'
44	N 81°10'36" E	40.73'
45	N 65°28'21" W	22.80'

CURVE	RADIUS	LENGTH	TANGENT	CHORD	BEARING	DELTA	CURVE	RADIUS	LENGTH	TANGENT	CHORD	BEARING	DELTA
100	183.00'	83.12'	42.29'	82.41'	S 11°30'54" W	26°01'31"	121	240.00'	28.85'	14.43'	28.81'	N 35°19'53" W	06°52'57"
101	245.00'	285.26'	161.28'	269.42'	N 08°49'42" W	66°44'34"	122	240.00'	109.37'	55.65'	108.43'	N 18°45'05" W	26°06'38"
102	330.00'	214.44'	111.16'	210.69'	S 23°34'06" E	31°13'56"	123	340.00'	230.01'	119.60'	225.65'	S 19°22'33" E	38°45'37"
103	330.00'	99.46'	50.11'	99.08'	S 03°40'55" W	17°16'05"	124	303.42'	129.10'	65.54'	128.13'	N 65°53'20" E	24°22'42"
104	540.00'	90.16'	45.19'	90.06'	N 07°31'58" E	09°34'00"	125	245.77'	158.29'	82.01'	155.56'	N 70°00'22" E	36°59'32"
105	540.00'	82.06'	41.11'	81.98'	N 01°36'14" W	08°42'23"	126	228.82'	139.04'	71.74'	136.91'	S 68°03'55" W	34°48'53"
106	415.00'	72.49'	36.34'	72.40'	S 11°04'03" W	10°00'29"	127	329.00'	253.63'	121.98'	228.75'	N 68°00'32" E	40°41'12"
107	415.00'	87.07'	43.69'	86.91'	S 00°03'11" W	12°01'14"	128	240.00'	227.12'	116.87'	260.15'41"	260°15'41"	
108	332.20'	360.28'	200.18'	342.86'	S 47°09'35" W	12°01'14"	129	50.00'	227.12'	116.87'	260.15'41"	260°15'41"	
109	296.33'	107.35'	54.27'	106.77'	N 67°52'08" E	20°45'28"	130	50.00'	252.29'	129.05'56"	289°05'56"	289°05'56"	
110	215.00'	212.04'	110.21'	208.06'	S 25°06'16" E	38°34'03"	131	50.00'	252.29'	129.05'56"	289°05'56"	289°05'56"	
111	480.00'	48.80'	24.42'	48.78'	S 02°54'29" E	05°49'31"	132	50.00'	252.29'	129.05'56"	289°05'56"	289°05'56"	
112	171.00'	121.11'	63.22'	118.59'	S 20°17'05" E	40°34'41"	133	50.00'	252.29'	129.05'56"	289°05'56"	289°05'56"	
113	331.00'	454.43'	271.22'	419.58'	N 46°53'02" W	78°39'43"	134	50.00'	252.29'	129.05'56"	289°05'56"	289°05'56"	
114	190.00'	105.88'	54.35'	104.52'	S 57°37'51" E	31°55'43"	135	50.00'	252.29'	129.05'56"	289°05'56"	289°05'56"	
115	388.00'	108.59'	54.65'	108.24'	N 50°01'04" W	18°02'10"	136	50.00'	252.29'	129.05'56"	289°05'56"	289°05'56"	
116	388.00'	216.43'	111.11'	213.63'	N 74°00'57" W	31°57'35"	137	50.00'	252.29'	129.05'56"	289°05'56"	289°05'56"	
117	352.00'	195.71'	100.45'	193.19'	S 81°11'50" W	31°57'35"	138	50.00'	252.29'	129.05'56"	289°05'56"	289°05'56"	
118	230.00'	212.04'	110.21'	208.06'	N 76°53'09" E	23°13'57"	139	50.00'	252.29'	129.05'56"	289°05'56"	289°05'56"	
119	155.00'	81.93'	41.53'	80.99'	N 15°02'58" E	30°05'23"	140	50.00'	252.29'	129.05'56"	289°05'56"	289°05'56"	
120	128.00'	42.37'	21.38'	42.18'	S 15°14'47" E	18°58'04"	141	170.84'	46.82'	23.56'	46.68'	N 73°19'28" W	15°42'15"

BENCH MARKS
 City of Wichita Bench Mark Disc, 67' south of centerline 21st St. & 79' south of section line, and 46' east of centerline 119th St. Elevation 172.08
 80d nail in power pole, 30' east and 50' south of Northwest Corner of Government Lot 6 in SW Quarter of Section 6-1275-R1W. Elevation 172.29
 80d nail in power pole 50' south of NE Corner of Government Lot 3 in NW Quarter of Section 6-1275-R1W. Elevation 179.98

All Easements are either 10 feet wide or 20 feet wide Utility Easements unless otherwise noted.
 The Minimum Low Opening Elevation of the homes built in this addition shall be 167.5 (City of Wichita Datum)(1354.9 MSL)
 Front yard Building Setback Lines are 25 feet and Sideyard Building Setback Lines are 15 feet unless otherwise shown.

ABERDEEN FIRST ADDITION

TO WICHITA, SEDGWICK COUNTY, KANSAS