

Lat. 371 & 372, S.W.I.  
**SANITARY SEWER LIFT STATION &  
 FORCE MAIN IMPROVEMENTS**

to serve  
**Stonebriar Addition**  
 CITY OF WICHITA, KANSAS

Michael E. Lindabak, P.E. City Engineer

Project Number

**468-78-245-82686-000-000-001**

Index Code: 742874

**Sheet Index**

Title Sheet	1
Plan/Profile	2
Lift Station Site Plan	3
Lift Station Detail	4
Manhole Detail	5
Electrical Riser Plan	6
Plat of Stonebriar Addition	7

**Benchmark**

Railroad Spike in Power Pole  
 Located 27' South and 402' East  
 of the Northwest Corner of the  
 NE 1/4, Section 24, TWP. 27-S,  
 R-1-W.

Elevation = 92.98 City Datum

City of Wichita Disc Located  
 44' North and 30' East of the  
 Centerlines of 47th Street South  
 and Meridian.

Elevation = 91.78 City Datum

Scale: 1" = 150'

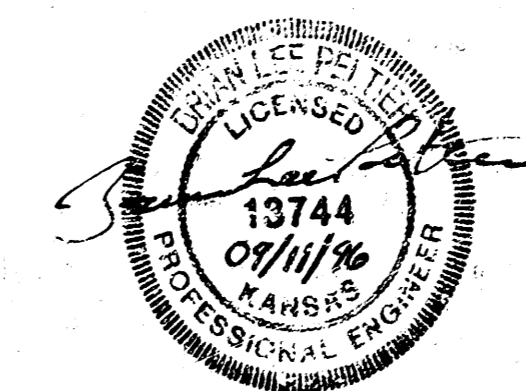
**GENERAL NOTES:**

- Contractor will be required to provide notice to utility companies a minimum of twenty-four (24) hours prior to any excavation, as follows:  

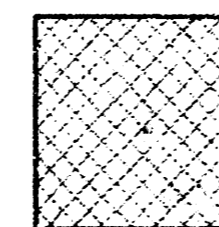
Kansas One-Call	687-2470
Multimedia Cablevision	262-0661
K.P.L. Gas Service Company	383-8650
Kansas Gas & Electric Company	383-8600
Peoples Gas Company	342-8350
Southwestern Bell Telephone Company	1-571-2611
City of Wichita Water Dept.	268-4908
City of Wichita Traffic Engineering	268-4446

The Contractor must notify the following in case of an emergency:
- Underground utility service lines and overhead utility pole lines are to be adjusted as necessary by others prior to construction unless the plans specifically call for their adjustment by the Contractor or unless the plans specifically identify a utility to be adjusted by its owner during construction. Existing utilities and their location, as shown on the plans, represent the best information obtainable for design. The Contractor will be required to work around existing utilities within the right-of-way which do not conflict with proposed construction.
- Trees and shrubs in public right-of-way which are in direct conflict with proposed new construction shall be removed by the Contractor with the Engineer's approval. Trees and shrubs which are not in direct conflict with proposed new construction shall be saved and protected from damage.
- The Contractor shall be responsible for preserving property irons. The Contractor will be required to re-establish any property irons which are damaged or destroyed by his construction operations. Such irons shall be re-established by a licensed land surveyor in accordance with state laws.
- All areas disturbed by construction operations shall be seeded with rye grass at a rate of 300 lbs/acre immediately following construction in that area. Prior to seeding, area shall be prepared per City specs.
- The Contractor shall be responsible for coordination of gas and electrical service to be extended and connected to the lift station site as necessary.
- The lump sum price bid for furnishing and installing lift station and miscellaneous appurtenances complete in place shall include all costs for furnishing and installing the lift station module as indicated on the site plan complete in place and in operation. Such lump sum bid shall include the cost of constructing and/or installing compacted subgrade, concrete pad, power pole, electrical conduit, electrical wiring, disconnect switch, electrical power supply, natural gas fuel supply, piping, earthwork, compacted fill, finished grading and any other incidentals necessary to complete the work.
- The Contractor Shall Also be Responsible For the Activation and Implementation of the Lift Station to Full Operational Condition as Required for Acceptance By The City of Wichita.
- The Contractor Shall Provide Appropriate Signage For The 4" Force Main as Required By The City of Wichita. Cost of Signage Shall Be Incidental to L.F. 4" Force Main.
- Interurban traffic generated outside the project area and local traffic generated within the project area are to be carried through construction at all times.
- The Contractor shall be responsible for preserving all quarter section corners. A licensed land surveyor shall take field ties to any quarter section corner within the limits of pavement removal and set a City survey monument in the required location. Survey monuments will be furnished by the City. The licensed land surveyor will accurately locate and install the iron at the quarter section corner. This work will not be paid for directly, but shall be considered subsidiary to other pay items of work in the contract.

Booked  
 N-262  
 RDL  
 AS BUILT



**Benefit District**



**BAUGHMAN COMPANY P. A.**  
 ENGINEERING, SURVEYING, & PLANNING  
 318 E. 262-7271 • 318 ELLIS • WICHITA, KANSAS 67211

**Benchmark:**

Railroad Spike in Power Pole  
Located 27' South and 402' East  
of the Northwest Corner of the  
NE 1/4, Section 24, TWP. 27-S,  
R-1-W

Elevation = 92.98 City Datum

City of Wichita Disc<sup>o</sup> located  
44' North and 30' East of the  
Centerlines of 47th Street South  
and Meridian.

Elevation = 91.78 City Datum

Sta 0+00 Begin Construction  
Break into Existing Bricked-Up  
Box-Out in Existing Special  
Plastic Lined Manhole and  
Install New 4" Force Main.  
Grout Pipe in Place, Water-  
Tight, with Non-Shrink Grout.

Crevel Access Road  
(See Detail Sheet 3)

Caution! Underground  
Gas Line Crossing

Caution! Overhead  
Electric Line Crossing

INSTALL 24 L.F.  
FLOWABLE FILL

6.3 L.F. 4" Sanitary  
Sewer Force Main

Sta D+06.3  
1 - 1'-90" Bend

Saw-Cut, Remove, and  
Replace 30 L.F. Asphalt  
Pavement as Necessary  
for Construction

NW COR., NE 1/4, SEC. 24,  
TWP. 27-S, R-1-W  
(See General Note #11)

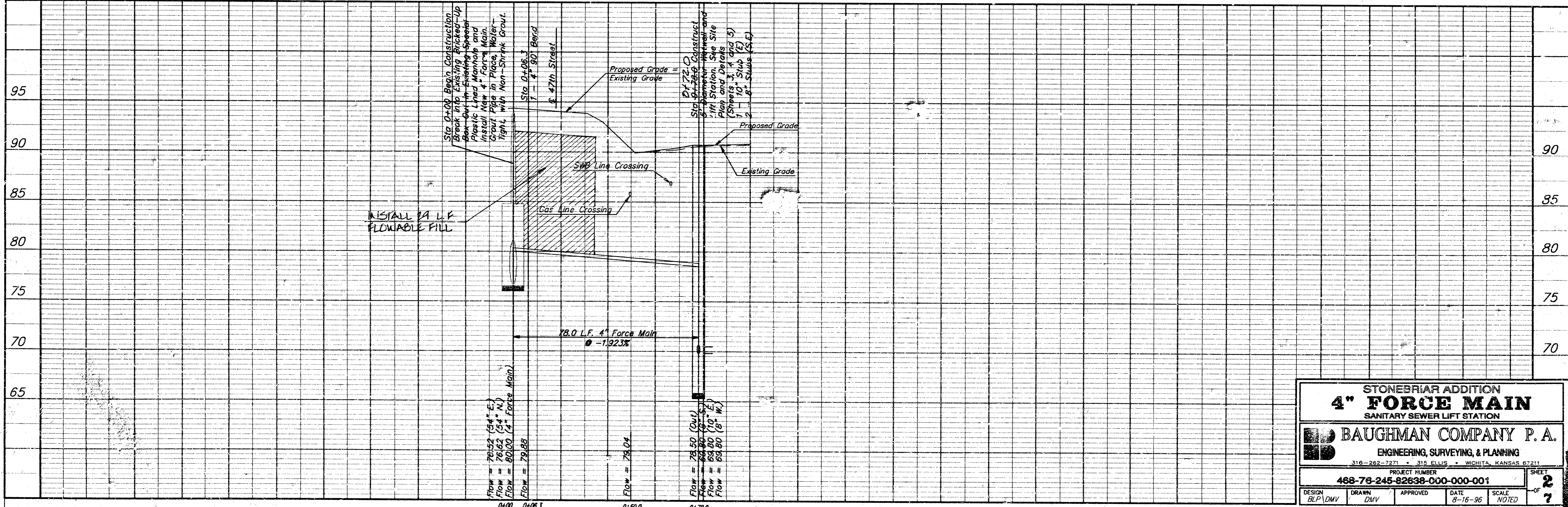
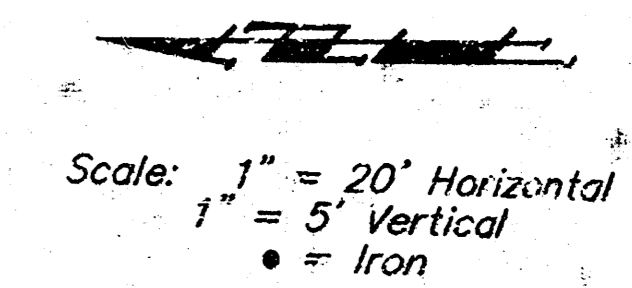
71.7 L.F. 4" Sanitary  
Sewer Force Main

Install 4" Force  
Main Location Sign  
(See Detail Sheet 3)

0+72.0  
Sta 0+72.0 Construct  
5' Diameter Wetwell and  
Lift Station. See Site  
Plan and Details  
(Sheets 3, 4 and 5)  
1 - 10" Stub (E)  
2 - 8" Stubs (S, W)

Caution! Underground  
SWB Line Crossing

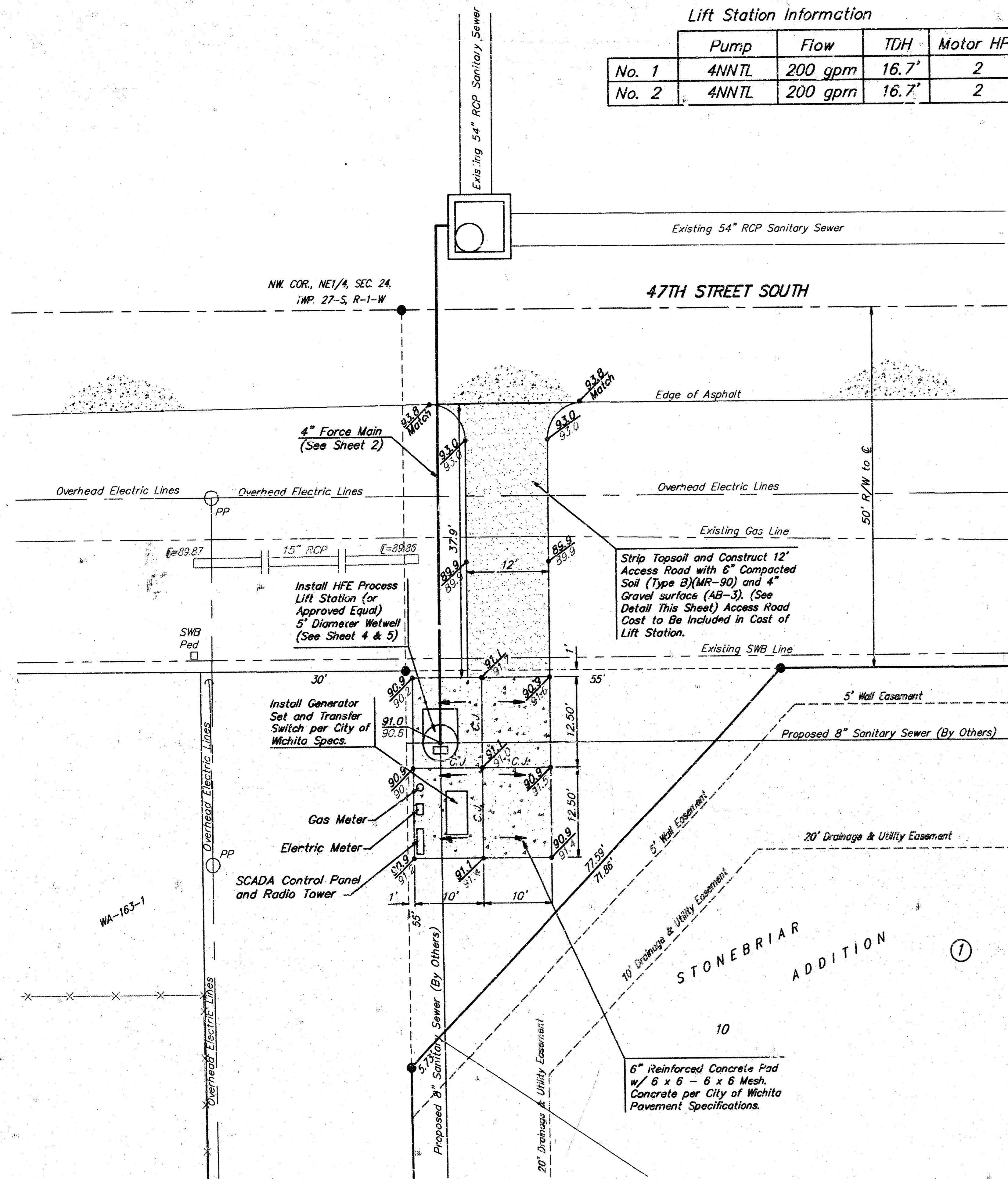
Caution! Existing  
15" RCP



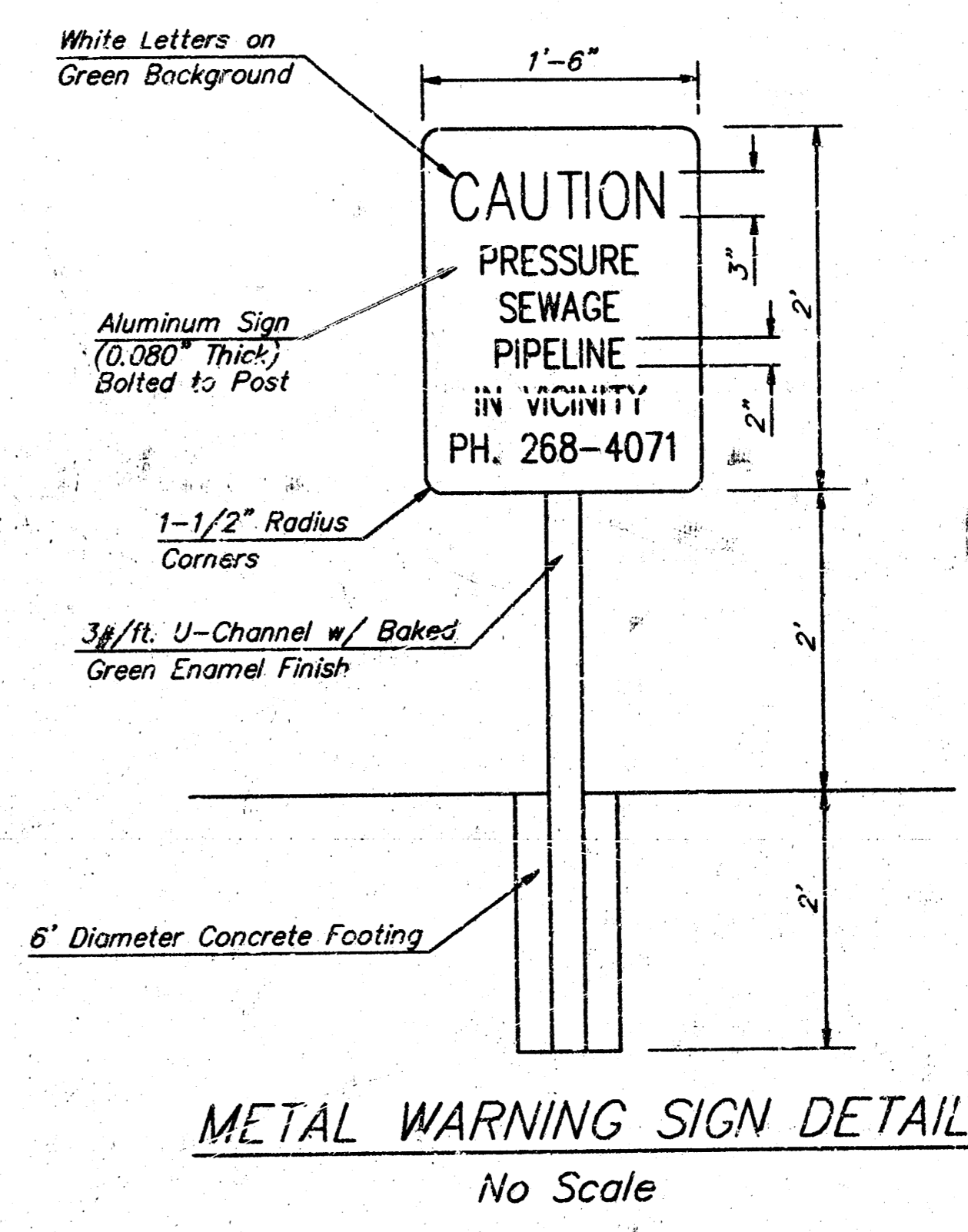
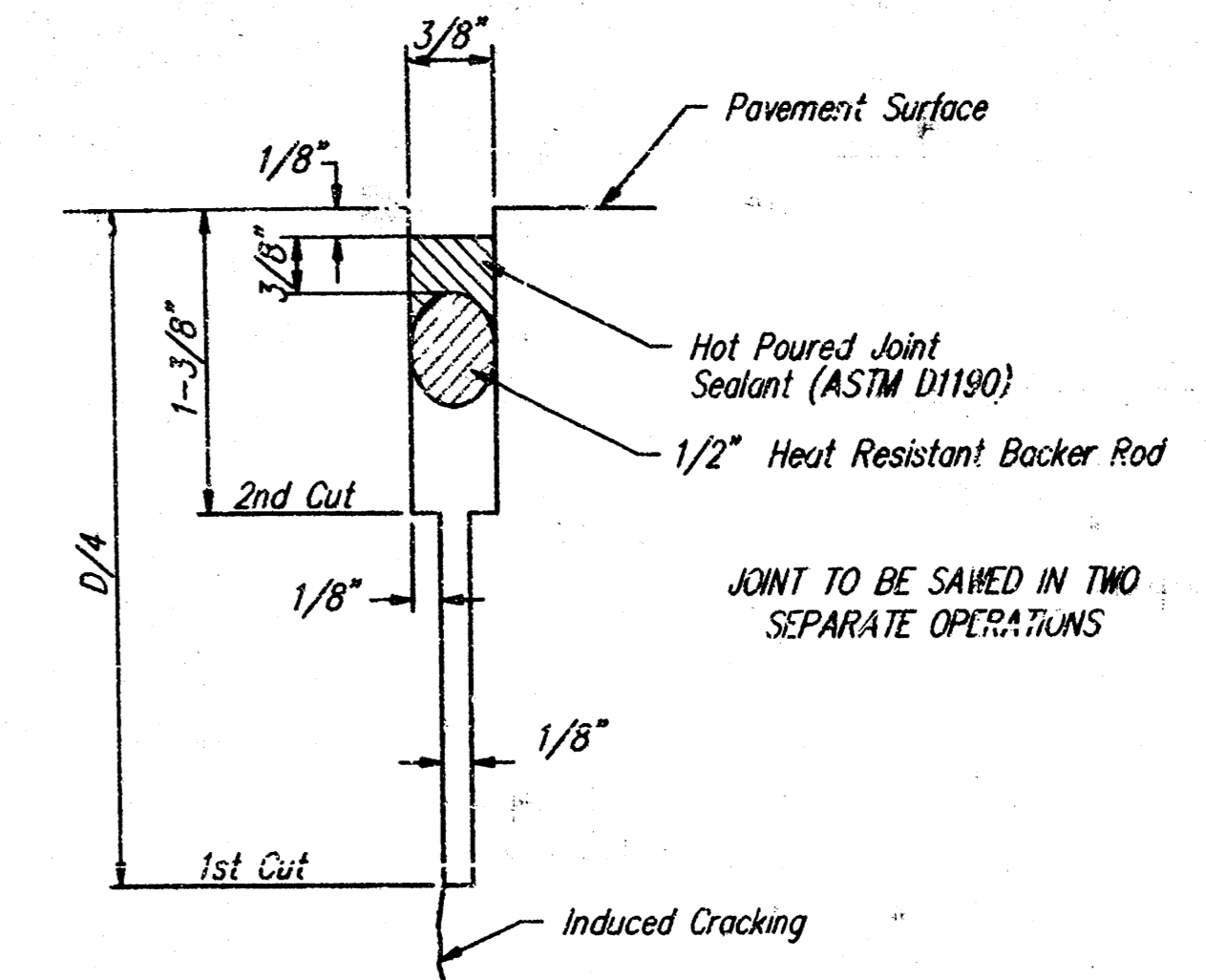
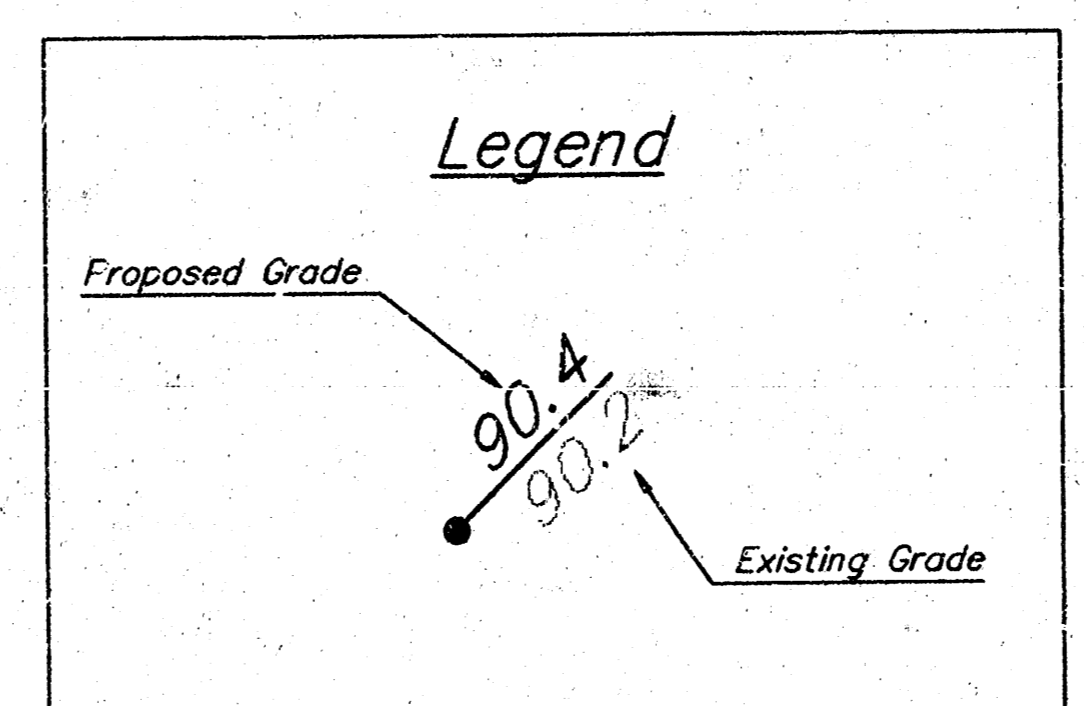
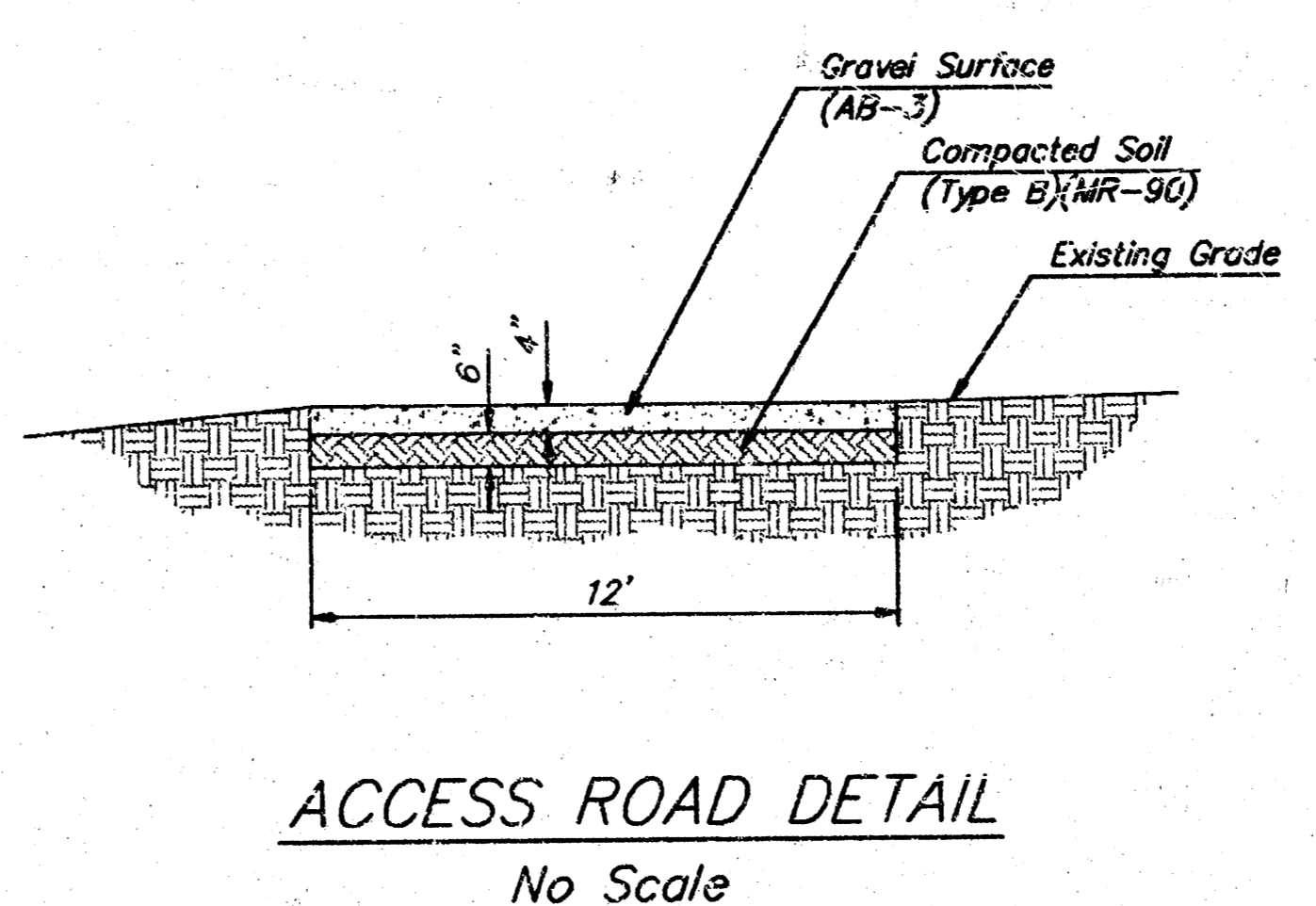
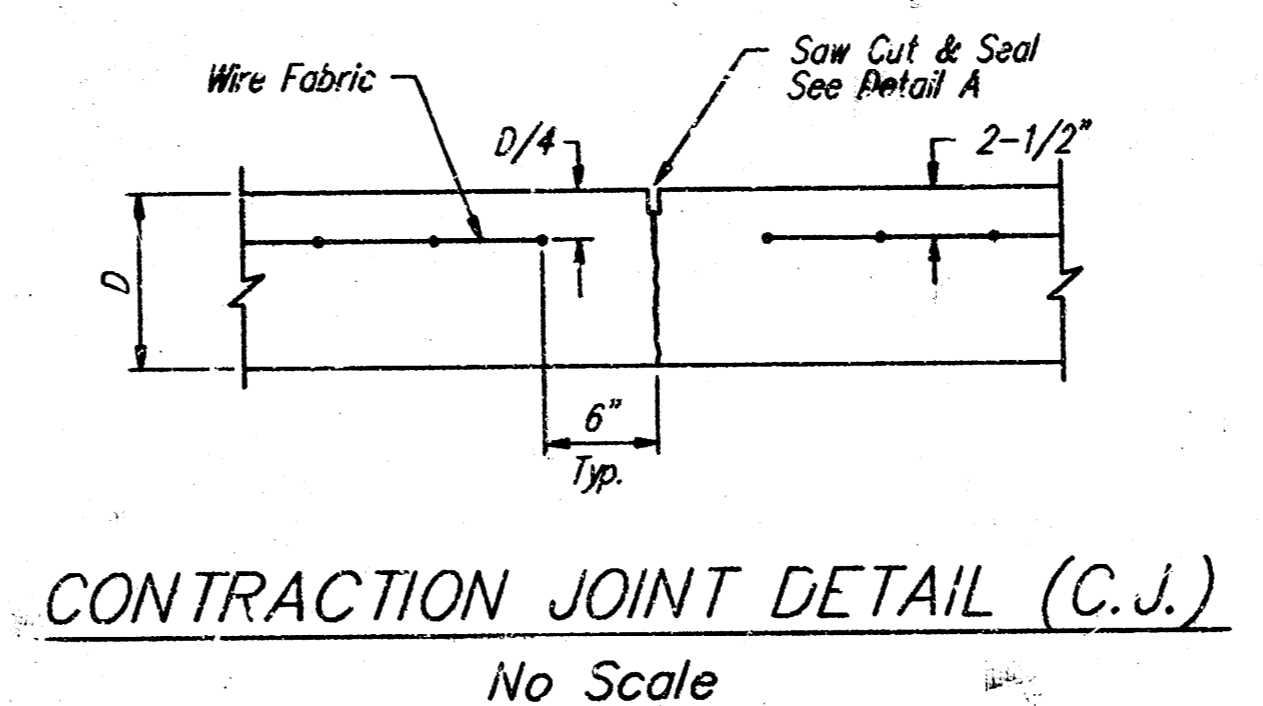
STONEBRIAR ADDITION			
<b>4" FORCE MAIN</b>			
SANITARY SEWER LIFT STATION			
<b>BAUGHMAN COMPANY P. A.</b>			
ENGINEERING, SURVEYING, & PLANNING			
316-282-7271 • 316 ELLIS • WICHITA, KANSAS 67211			
PROJECT NUMBER			
488-78-245-82638-000-000-001			
DESIGN	DRAWN	APPROVED	DATE
GLP/DMV	DMV		8-16-96
SCALE			NOTED
			2
			7

Lift Station Information

	Pump	Flow	TDH	Motor HP	Impeller Dia.	RPM	Elec. Serv. Req.
No. 1	4NNTL	200 gpm	16.7'	2	To Be Determined By	1140	208V, 3Ø, 4-Wire
No. 2	4NNTL	200 gpm	16.7'	2	Pump Manufacturer	1140	208V, 3Ø, 4-Wire



STONEBRIAR ADDITION LIFT STATION  
Scale: 1" = 10'



**Notes:**

The Price Bid for Furnishing and Installing the Wet Well Mounted Lift Station With Standby Emergency Power and Miscellaneous Appurtenances Complete in Place Shall Include All Costs for Furnishing and Installing the Lift Station as Indicated Complete in Place and in Operation. This Price Shall Include the Cost of Constructing and/or Installing Compacted Subgrade, Concrete Pad, Power Pole, Electrical Conduit, Electrical Wiring, Disconnect Switch, Primary and Secondary Electrical Power Supply, Natural Gas Fuel Supply, Finished Grading, and any Other Incidentals Necessary to Complete the Work.

The Contractor Shall be Responsible for Arrangements with the Gas Company for Extension of Gas Service to the Lift Station Site and For Payment of Costs of such Extension and Meter Setting. Location of Meter to be Acceptable to Gas Service Company and to City of Wichita Sewer Maintenance Department.

The Contractor Shall be Responsible for Arrangements with KGE Electric Company for Extension of 3-Phase Electrical Service to the Lift Station Site and For Payment of such Extension and Meter Setting at a Cost of \$11,100. Contractor Shall Contact Mike Pruitt at KGE (261-6257) to Make the Necessary Arrangements.

**STONEBRIAR ADDITION  
SITE PLAN  
SANITARY SEWER LIFT STATION**

**BAUGHMAN COMPANY P. A.**  
ENGINEERING, SURVEYING, & PLANNING  
318-262-7271 • 318 ELLIS • WICHITA, KANSAS 67211

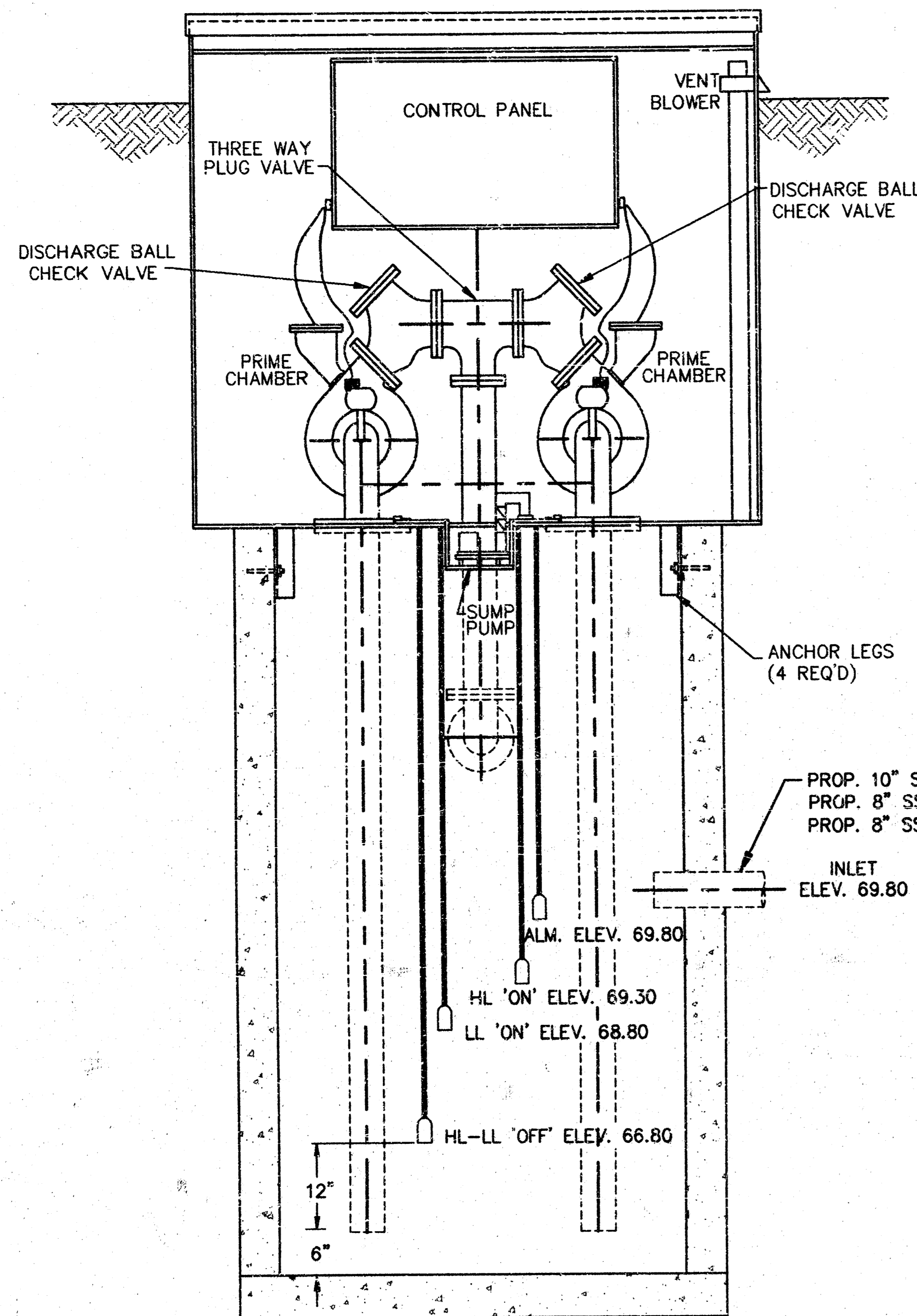
PROJECT NUMBER  
**488-76-245-82638-000-0001**

DESIGN BLP/DMV	DRAWN DMV	APPROVED	DATE 8-16-96	SCALE NOTED	SHEET 3 OF 7
-------------------	--------------	----------	-----------------	----------------	-----------------------

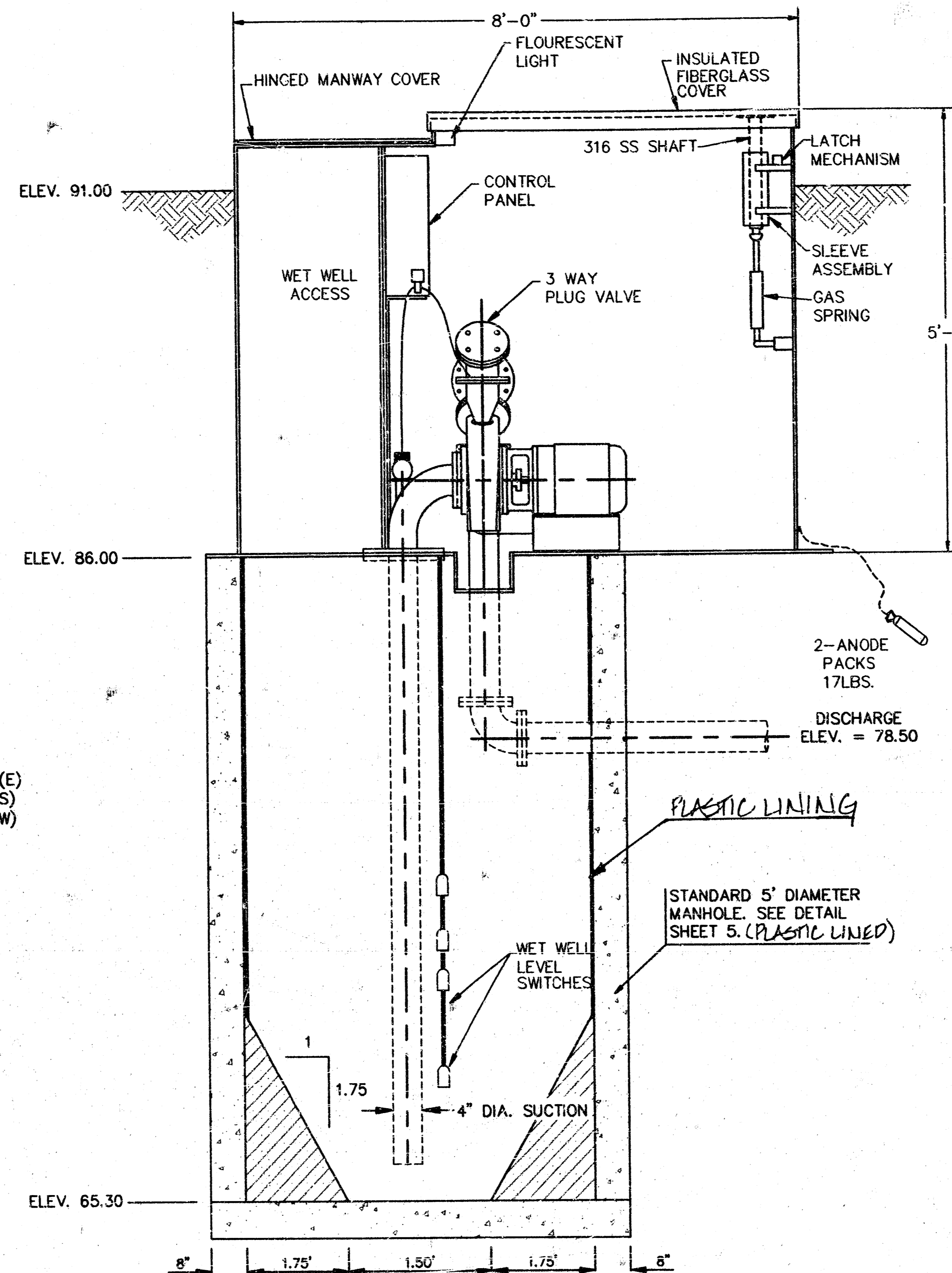
STONEBRIAR ADDITION

PUMPS	MAX HP	"A"	"B"	"C"
P470	7 1/2	5'	17 7/8"	2'-6"
		6'	17 7/8"	3'-6"
P495	20	5'	17 1/2"	2'-6"
		6'	17 1/2"	3'-6"
P412	50	5'	17 1/2"	2'-6"
		6'	17 1/2"	3'-6"

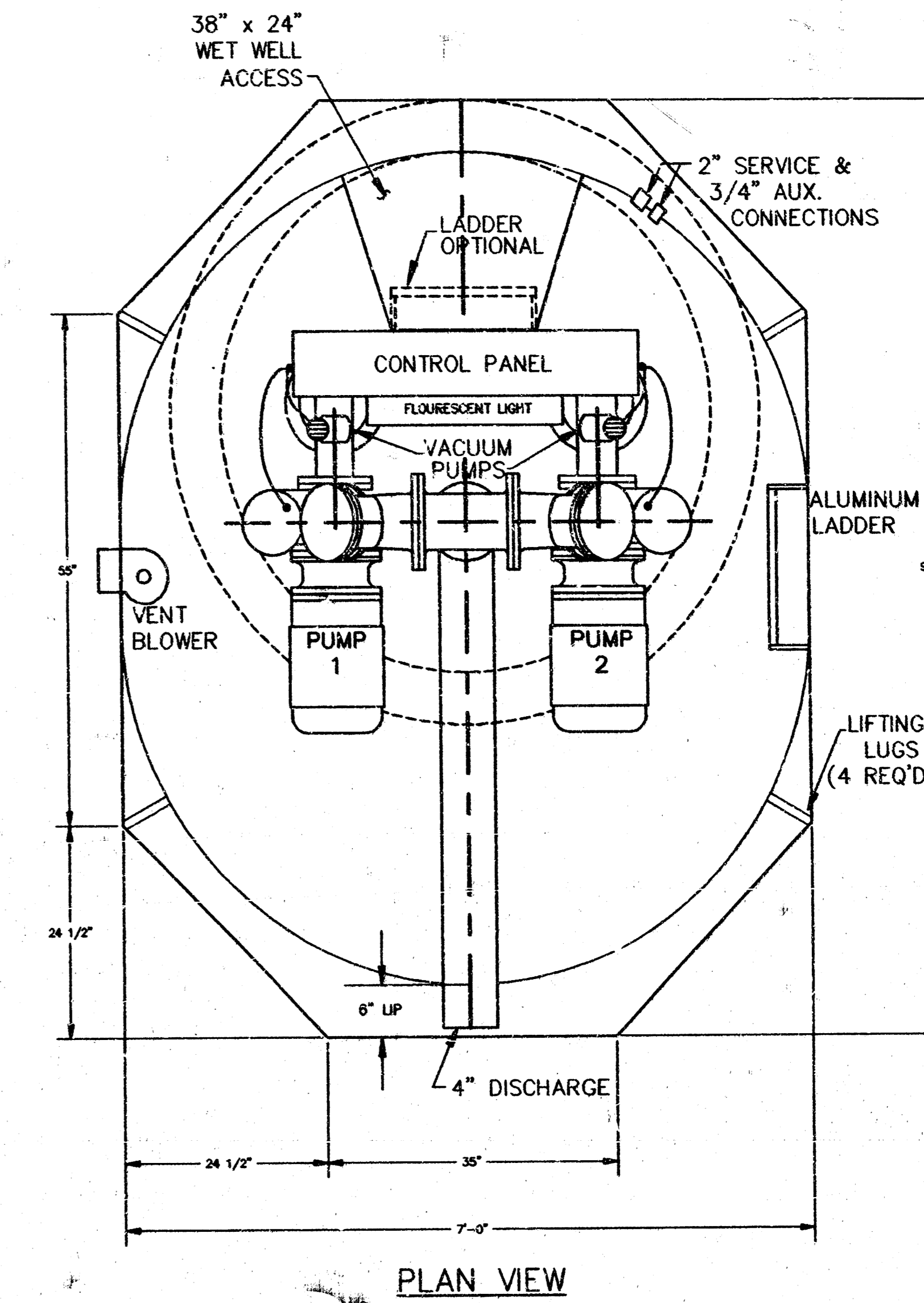
**RECESSED VACUUM PRIMED  
WET WELL MOUNTED LIFT STATION**



FRONT ELEVATION



SIDE ELEVATION



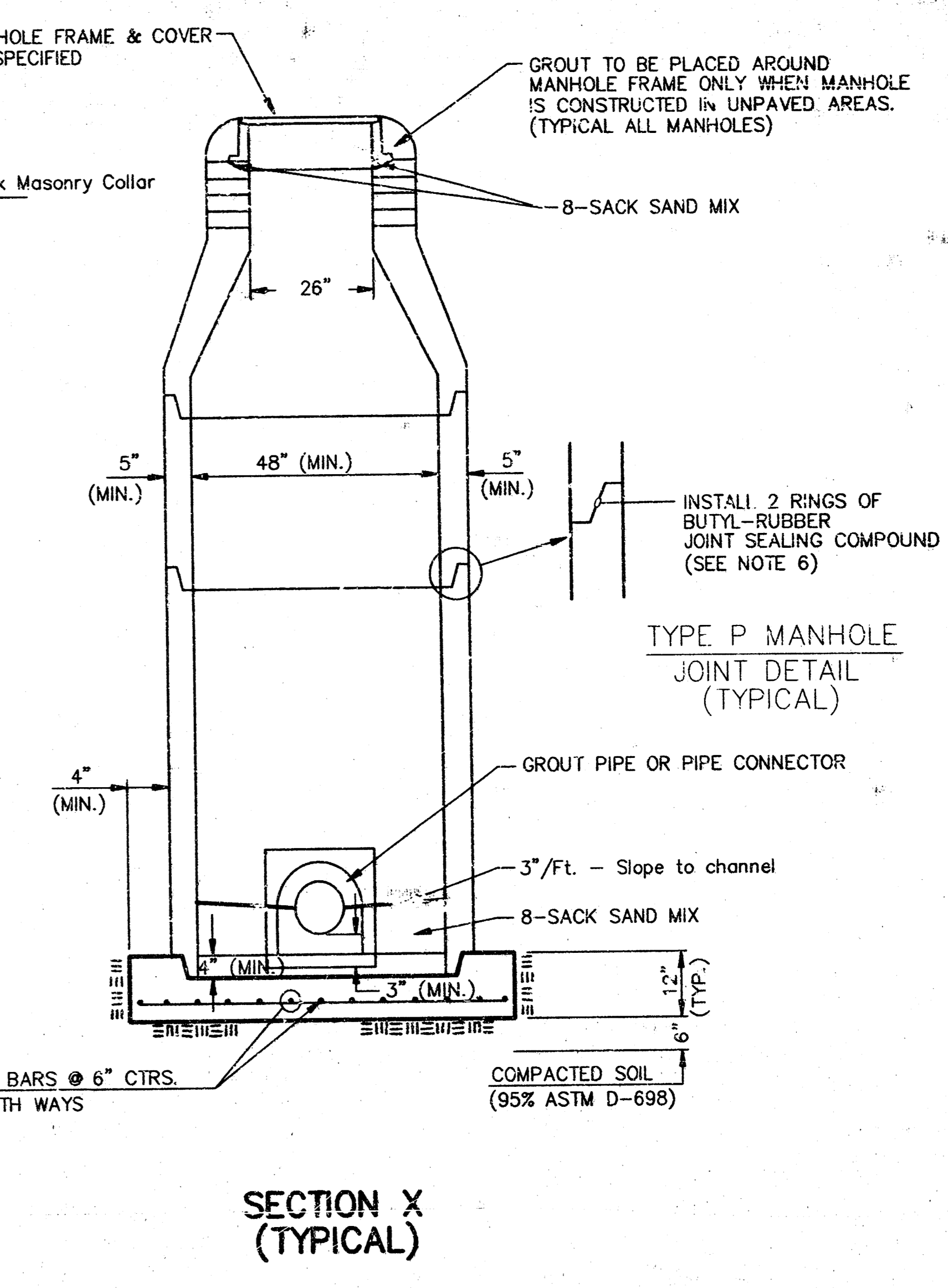
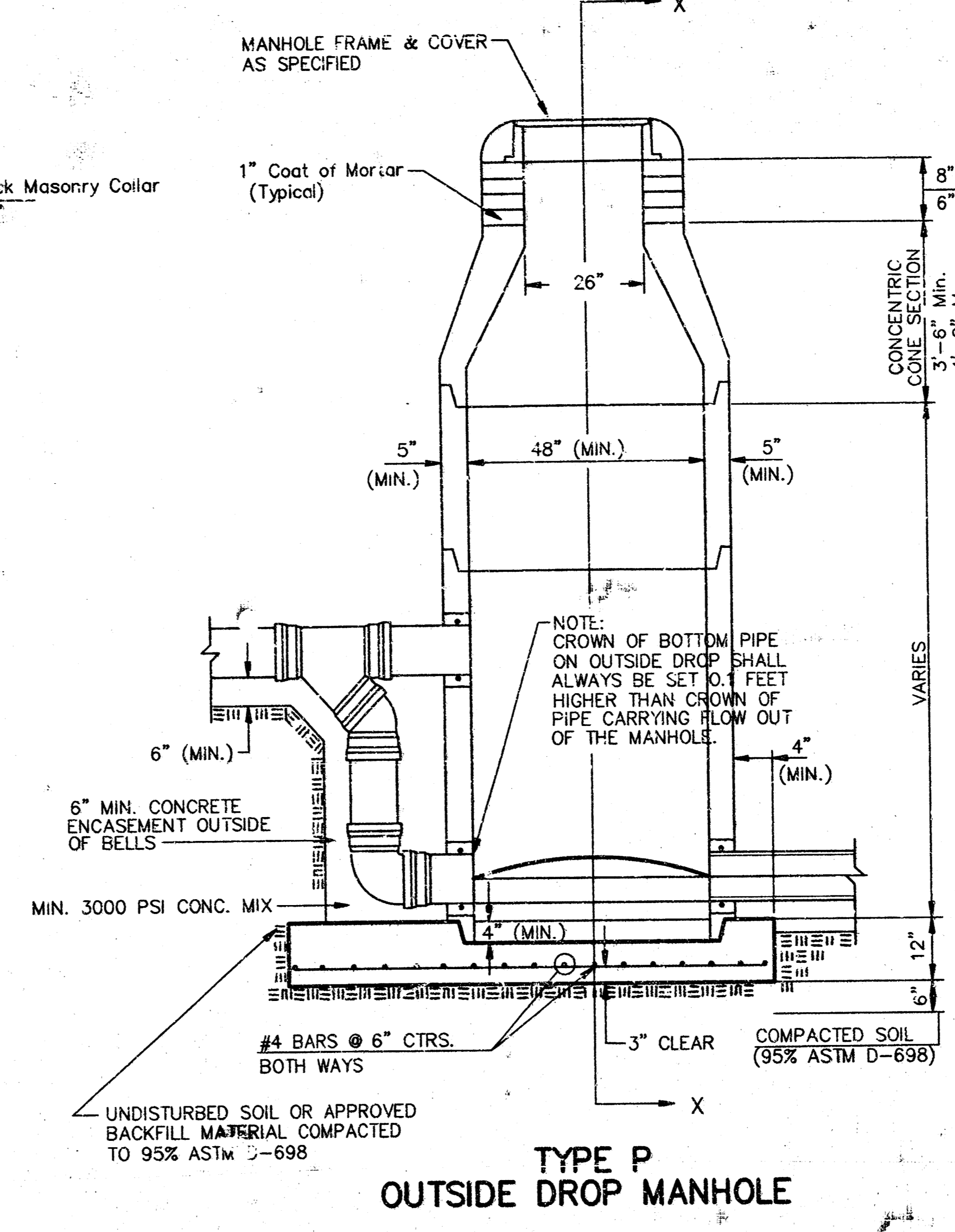
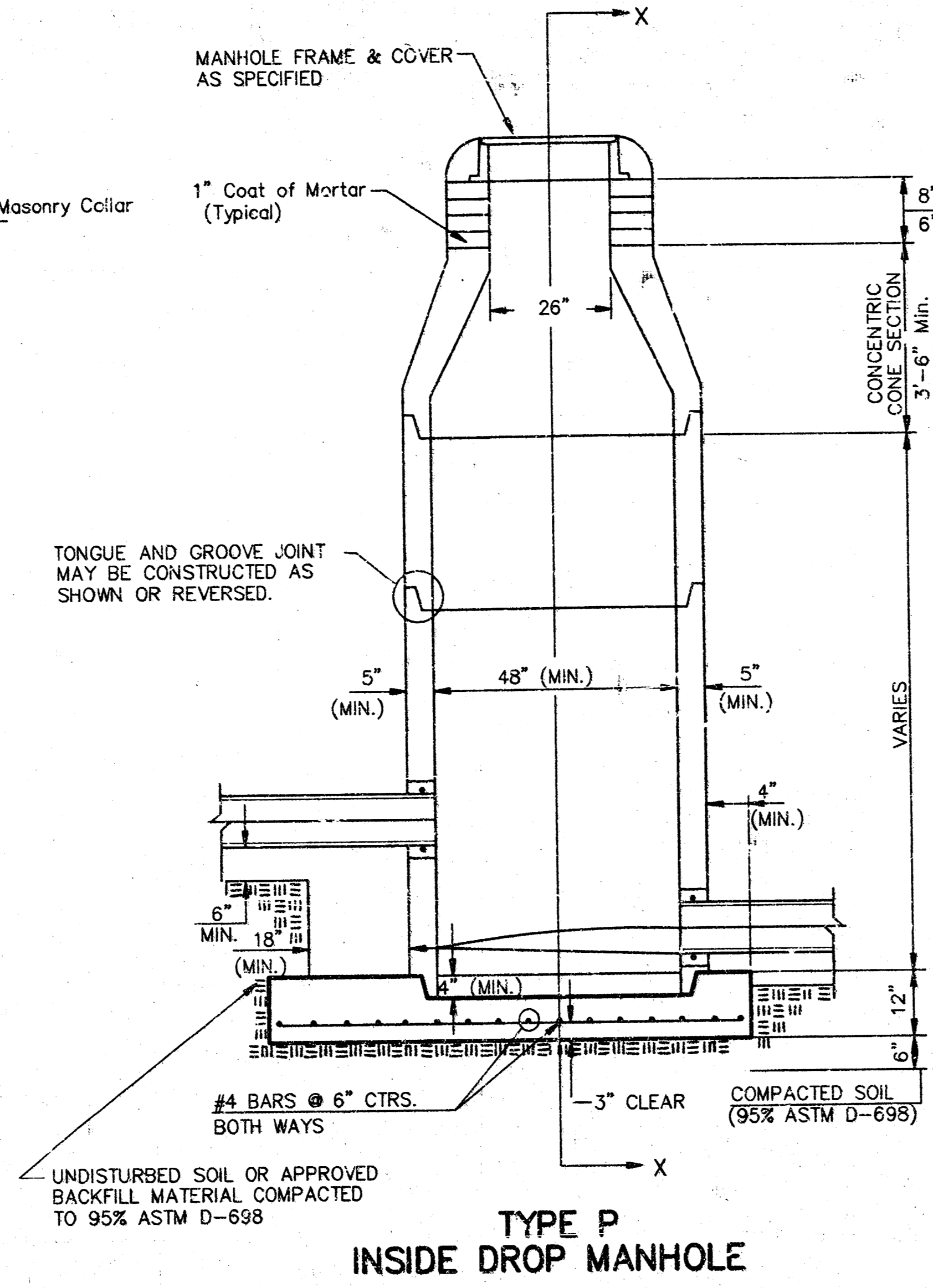
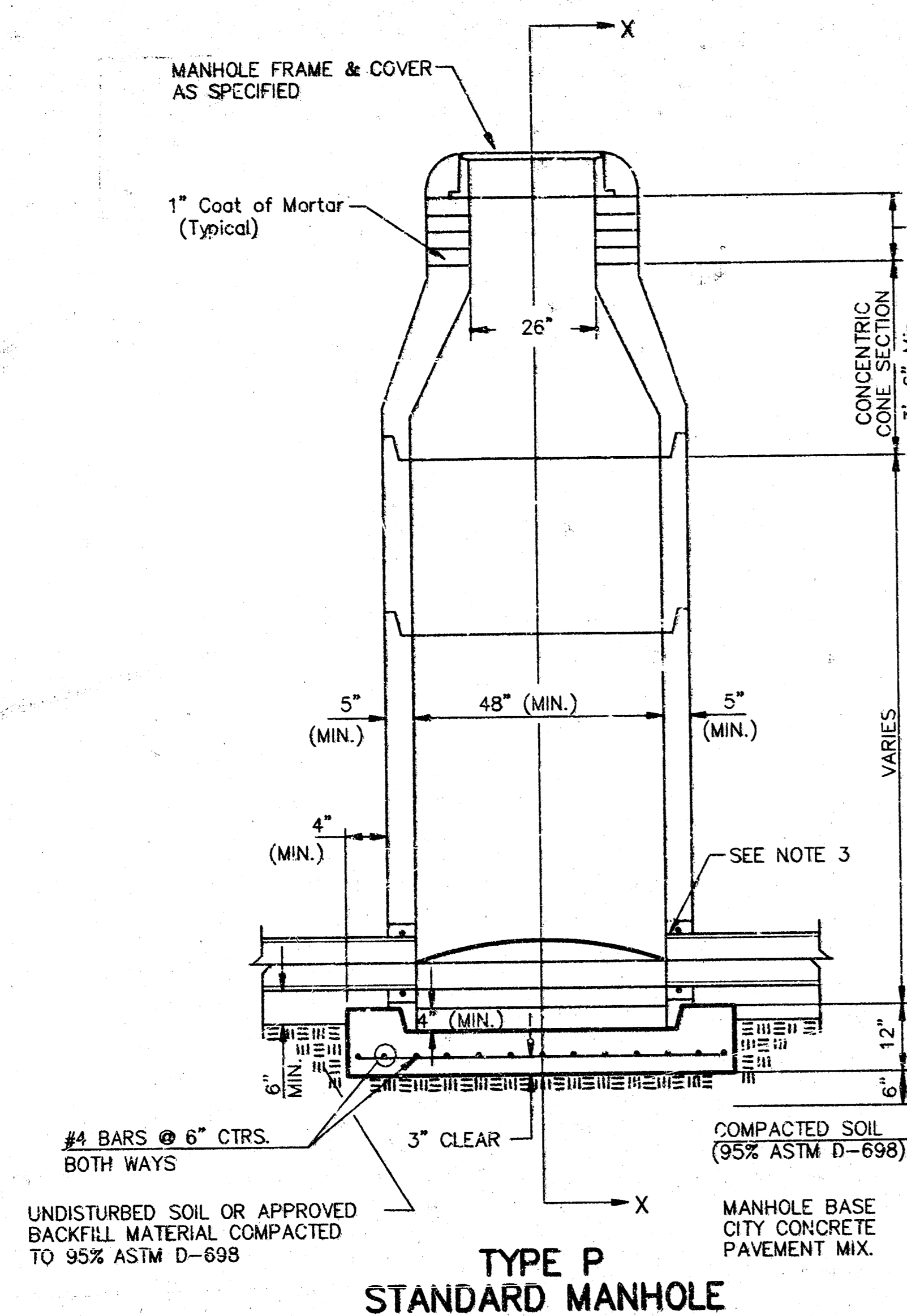
**STONEBRIAR ADDITION  
LIFT STATION  
SANITARY SEWER LIFT STATION DETAIL**

**BAUGHMAN COMPANY P. A.**  
ENGINEERING, SURVEYING, & PLANNING  
316-262-7271 • 315 ELLIS • WICHITA, KANSAS 67211

DESIGN	DRAWN	APPROVED	DATE	SCALE	SHEET
			8-16-96	NONE	4 OF 7

PROJECT NUMBER: 468-78-245-82630-000-001

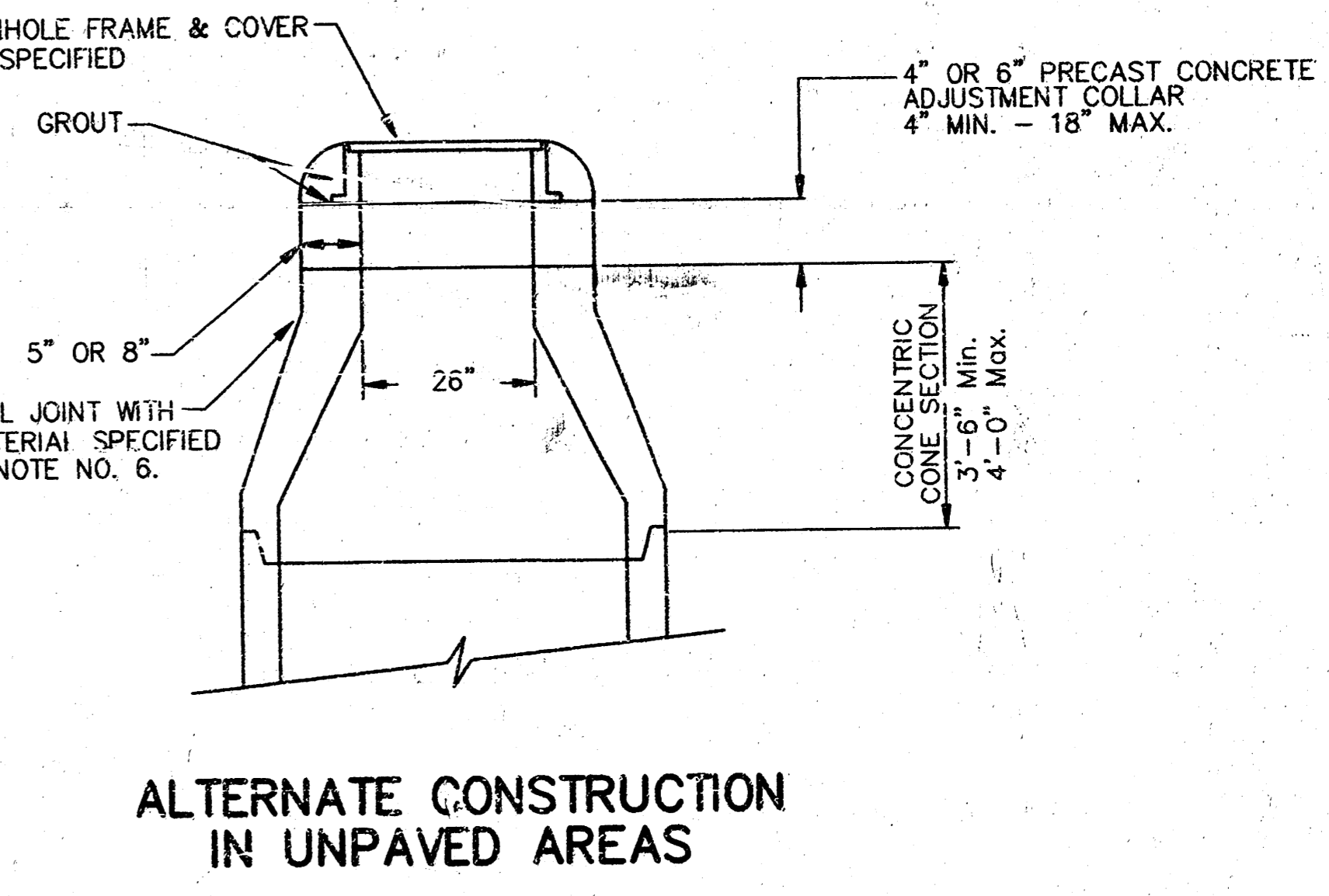
# SEWER APPURTENANCES DETAILS



- GENERAL NOTES**  
**PRECAST MANHOLE NOTES**
- ALL PRECAST CONCRETE MANHOLE SECTIONS SHALL CONFORM TO THE LATEST REVISIONS OF A.S.T.M. C478 AS MODIFIED BY THE SPECIFICATIONS.
  - NON-SHRINK GROUT SHALL BE NON-METALLIC TYPE.
  - APPROVED FLEXIBLE WATERSTOP GASKETS SHALL BE INSTALLED TO JOIN THE SEWER TO THE MANHOLE WALL. WHEN A.B.S. COMPOSITE PIPE OR P.V.C. PIPE IS USED, FOR OTHER TYPES OF PIPE THE SEWER SHALL BE GROUTED IN PLACE WITH NON-SHRINK GROUT. THE SEWER PIPE SHALL BE SUPPORTED WITH CONCRETE ENCASEMENT A MINIMUM OF 3 FEET FROM THE MANHOLE WALL AND TO THE FIRST JOINT FOR V.C.P. SUCH THAT THE JOINT REMAINS FLEXIBLE.
  - ALL INSIDE SURFACES OF THE CONCRETE MANHOLE WHICH WOULD BE EXPOSED TO SEWER GAS SHALL BE COATED WITH 2 COATS TREMEC SERIES 66 HI-BUILD EPOXYURE, DRY THICKNESS OF 8 MILS (MIN.).
  - EXTERIOR MANHOLE WALLS SHALL BE COATED WITH 1 COAT MOBILARMA 633 BITUMINOUS COATING.
  - JOINT SEALING COMPOUND SHALL BE KENT SEAL NO. 2 OR APPROVED EQUAL.
  - PRECAST MANHOLES SHALL BE SET AT LEAST 4 INCHES INTO THE MANHOLE BASE.
  - TOP OF MANHOLE FLOOR SLAB SHALL BE AT LEAST 3 INCHES BELOW THE FLOW LINE OF THE OUTLET PIPE TO INSURE SUFFICIENT MINIMUM THICKNESS OF SHAPED INVERT.
  - LIFTING HOLES SHALL BE FILLED WITH NON-SHRINK GROUT AND THE INTERIOR SURFACE COATED AS SPECIFIED.
  - MORTAR USED IN MASONRY CONSTRUCTION SHALL CONTAIN 8 SACKS OF CEMENT PER CUBIC YARD. CONCRETE USED IN MANHOLE BASES SHALL CONFORM TO THE REQUIREMENTS OF CONCRETE FOR CONCRETE PAVEMENT CONSTRUCTION AS SPECIFIED IN THE CITY STANDARD PAVING SPECIFICATIONS USING CITY CONCRETE PAVEMENT MIX WITHOUT AIR ENTRAINING ADMIXTURE. MORTAR SHALL BE PLACED AROUND THE MANHOLE RING AS SHOWN ON THE DRAWINGS WHEN MANHOLES ARE CONSTRUCTED IN UNPAVED AREAS. MANHOLES CONSTRUCTED WHERE PIPE SIZES ARE SMALLER THAN 24" SHALL HAVE AN INSIDE DIAMETER OF 4". MANHOLES CONSTRUCTED WHERE PIPE SIZES ARE 24" OR LARGER SHALL HAVE AN INSIDE DIAMETER OF 5". COMPLETED MANHOLE SHALL BE WITHOUT LEAKS AND WATER TIGHT.

- REINFORCING STEEL SHALL BE INSTALLED IN THE MANHOLE BASES AND SHALL CONSIST OF NO. 4 BARS PLACED ON 6" CENTERS IN BOTH DIRECTIONS. THE MANHOLE BASE REINFORCEMENT SHALL BE PLACED AT LEAST 3" ABOVE THE BOTTOM OF THE MANHOLE BASE. ALL COSTS FOR FURNISHING AND INSTALLING REINFORCING STEEL SHALL BE INCLUDED IN THE UNIT PRICE BID FOR THE MANHOLE.
- OPENINGS SHALL BE CUT INTO THE MANHOLE WALL WHEN OUTSIDE DROPS ARE CONSTRUCTED ON EXISTING MANHOLES. SUCH OPENINGS CUT INTO EXISTING MANHOLES SHALL BE AS SMALL AS PRACTICAL TO FACILITATE INSTALLING AND GROUTING THE NEW PIPE IN PLACE. WATERSTOP GASKETS SHALL BE USED WITH P.V.C. AND A.B.S. COMPOSITE PIPE. THE NEW PIPE SHALL BE GROUTED INTO THE OPENING USING AN APPROVED NON-SHRINK GROUT FOR THE FULL MANHOLE WALL THICKNESS. THE EXTERIOR OF THE COMPLETED CONNECTION SHALL BE SEALED WITH AN APPROVED BITUMINOUS COATING SUCH THAT THE CONNECTION WILL BE WATER TIGHT. FLOOR OF MANHOLE SHALL BE MODIFIED TO FORM NEW FLOW CHANNEL FOR THE NEW CONNECTION AS INDICATED BY THE DRAWING. THIS WORK, INCLUDING MODIFICATION OF MANHOLE FLOOR, SHALL BE PAID FOR AT THE UNIT PRICE BID FOR OUTSIDE DROP STACK CONSTRUCTED ON EXISTING MANHOLE.
- THE FLOORS OF ALL MANHOLES SHALL BE SHAPED WITH FLOW CHANNELS SUCH THAT THE MANHOLES WILL BE SELF CLEANING AND FREE OF AREAS WHERE SOLIDS COULD BE DEPOSITED AS SEWAGE FLOWS THROUGH THE MANHOLE FROM ALL INLET PIPES TO THE OUTLET PIPE. FLOW CHANNELS SHALL BE FORMED TO MATCH THE BOTTOM HALVES OF THE INFLOWING PIPES AND THE OUTFLOWING PIPE AS SHOWN BY THE DRAWINGS EXCEPT FOR INSIDE DROP MANHOLES. FLOW CHANNELS FOR INSIDE DROP MANHOLES SHALL BE CONSTRUCTED AS INDICATED BY THE DRAWING. MANHOLE FLOORS SHALL HAVE SLOPES OF 3 INCHES PER FOOT IN THE AREAS OUTSIDE OF THE FLOW CHANNELS SLOPED TOWARD THE FLOW CHANNELS. PIPES LAID THROUGH MANHOLES SHALL HAVE THE TOP HALF REMOVED TO HEAT LINES FOR THE FULL INSIDE DIAMETER OF THE MANHOLE. MANHOLE FLOORS SHALL THEN BE SHAPED AROUND THE BOTTOM HALF OF THE PIPE WHICH FORMS THE FLOW CHANNEL.
- PIPES INSTALLED WITHIN THE EXCAVATION MADE FOR THE MANHOLE SHALL BE CRADLED WITH CONCRETE TO THE LIMITS OF THE MANHOLE EXCAVATION. WHEN CLAY PIPE IS USED, THE CRADLE SHALL EXTEND TO THE FIRST JOINT OUTSIDE THE MANHOLE. THE CRADLE SHALL BE TERMINATED AT THE CLAY PIPE JOINT IN A MANNER WHICH WILL MAINTAIN THE FLEXIBILITY OF THE JOINT. COST OF CRADLE WITHIN MANHOLE EXCAVATION OR TO CLAY PIPE JOINTS ADJACENT TO MANHOLE SHALL BE INCLUDED IN THE UNIT PRICE BID FOR THE MANHOLE.

- MANHOLE COVER CASTINGS AND MANHOLE FRAME CASTINGS SHALL CONFORM TO THE REQUIREMENTS AS INDICATED IN THE STANDARD SPECIFICATIONS AND AS SHOWN IN THE STANDARD DETAIL DRAWING.
- THE VERTICAL DROP IN INSIDE DROP MANHOLES SHALL NOT EXCEED 2' FOR INFLOWING PIPES SIZED 12" OR SMALLER AND 2' FOR INFLOWING PIPES LARGER THAN 12". THE CROWNS OF INFLOWING PIPES SHALL NEVER BE SET LOWER THAN THE CROWN OF THE OUTFLOWING PIPE.
- STANDARD MANHOLES AND STANDARD INSIDE DROP MANHOLES SHALL BE BID AS STANDARD MANHOLES FOR THE TYPE AND DIAMETER INDICATED. OUTSIDE DROP MANHOLES SHALL BE BID AS STANDARD OUTSIDE DROP MANHOLES FOR THE TYPE AND DIAMETER INDICATED. ALL MANHOLE DIAMETERS WILL BE 4' UNLESS INDICATED OTHERWISE.
- A BRICK MASONRY COLLAR SHALL BE INSTALLED BETWEEN THE CAST IRON FRAME AND THE CONCENTRIC CONE. THE COLLAR WILL HAVE 8" WALLS AND A VERTICAL HEIGHT OF 6" MINIMUM AND 18" MAXIMUM. A 1" COAT OF MORTAR WILL BE PLASTERED ON THE OUTSIDE OF THE COLLAR. THE USE OF PRE-CAST CONCRETE SPACERS FOR MANHOLE TOP ADJUSTMENT IS ALSO ALLOWED.



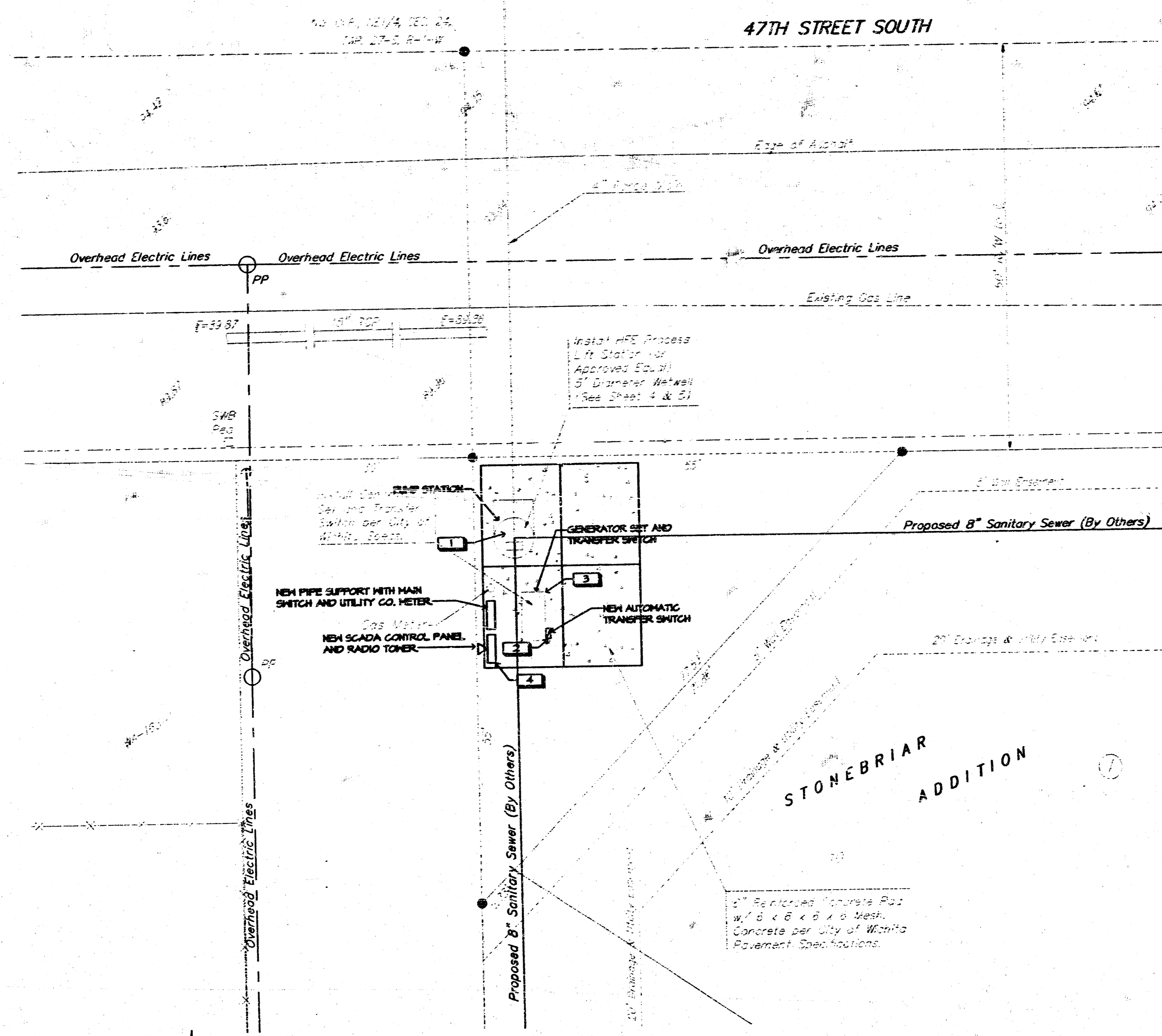
CITY OF WICHITA  
**STD. MANHOLE DETAILS**  
& SEWER APPURTENANCES DETAILS

**BAUGHMAN COMPANY P.A.**  
ENGINEERING, SURVEYING, & PLANNING  
316-262-2222 • 316-262-2222 • WICHITA, KANSAS 67211

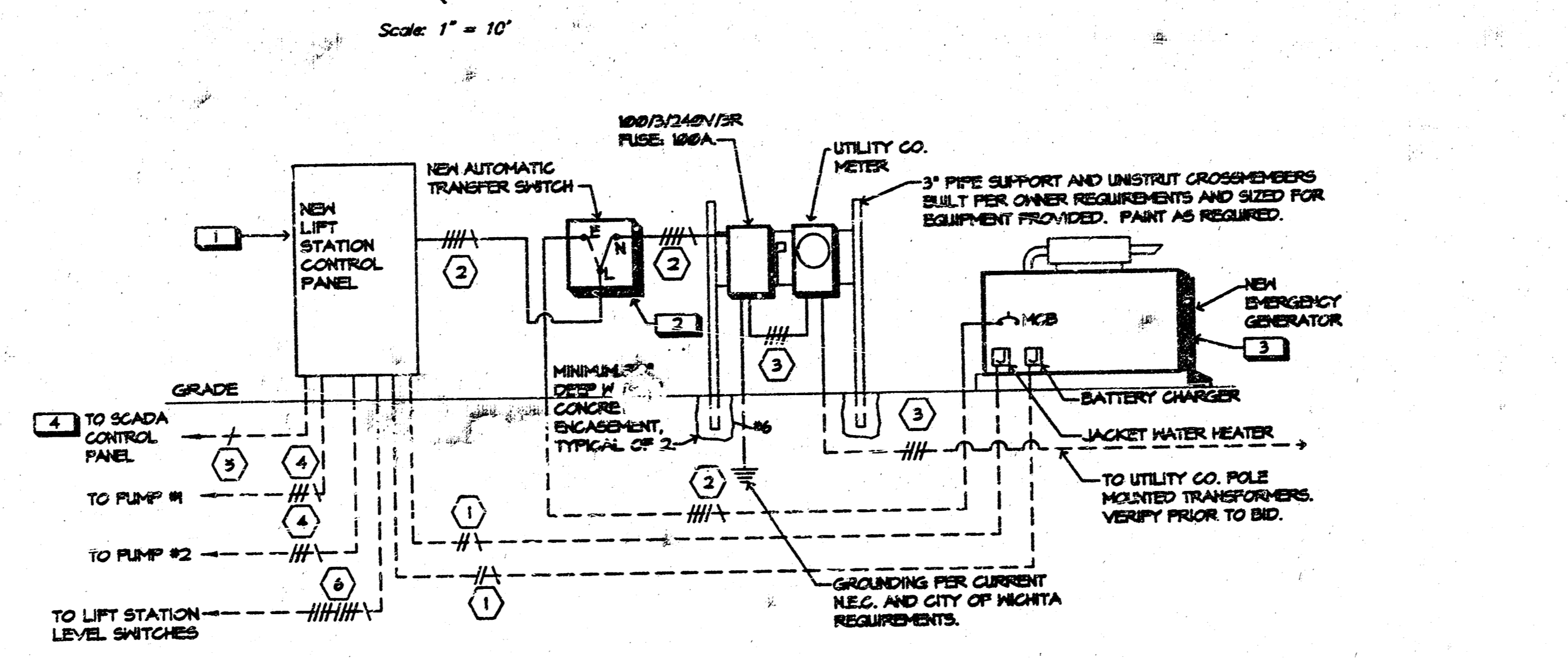
PROJECT NUMBER: 488-78-245-82638-010-000-001

DESIGN	DRAWN	APPROVED	DATE	SCALE
	NOV.93			

PLAN NOTES	
SVA	DESCRIPTION
1	NEW LIFT STATION CONTROL PANEL TO INCLUDE THE FOLLOWING DEVICES: (1) 200 AMP GENERATOR BATTERY CHARGER (2) 200 AMP JACKET WATER HEATER (3) 200 AMP SCADA CONTROL PANEL PROVIDE ALL WIRING AND CONNECTIONS PER MANUFACTURERS REQUIREMENTS. PROVIDE COMPLETE UNIT PER CITY OF MOHTA SPECIFICATIONS AND REQUIREMENTS.
2	NEW AUTOMATIC TRANSFER SWITCH, 150 AMP, 3 POLE, 200 VOLT, 3 PHASE WITH SOLID NEUTRAL AND GROUND BAR. PROVIDE WITH AUTOMATIC HEAVILY DUTY EMERGENCY BACKUP POWER. PROVIDE COMPLETE UNIT PER CITY OF MOHTA SPECIFICATIONS AND REQUIREMENTS.
3	NEW EMERGENCY GENERATOR, NATURAL GAS, 20 KVA, 120/208 VOLT, 3 PHASE, 4 WIRE PLUS GROUND WITH AUTO START, WEATHERPROOF ENCLOSURE AND ALL ASSOCIATED EQUIPMENT TO PROVIDE AUTOMATIC EMERGENCY BACKUP POWER. PROVIDE COMPLETE UNIT PER CITY OF MOHTA SPECIFICATIONS AND REQUIREMENTS.
4	NEW SCADA (SITE CONTROL AND DATA ACQUISITION) SYSTEM, PROVIDE COMPLETE SYSTEM WITH CONTROL PANEL, ANTENNAE, WIRE AND RADIO TRANSMITTER. PROVIDE WIRING AND SECTION OF ALL REQUIRED POINTS TO GIVE A COMPLETE AND FUNCTIONAL SYSTEM. PROVIDE COMPLETE UNIT PER CITY OF MOHTA SPECIFICATIONS AND REQUIREMENTS.



**STONEBRIAR ADDITION LIFT STATION ELECTRICAL**



**STONEBRIAR ADDITION LIFT STATION ELECTRICAL RISER DIAGRAM**

NOT TO SCALE  
 NOTES: 1. VERIFY ALL PRIMARY AND SECONDARY ELECTRICAL SERVICE ENTRANCE REQUIREMENTS WITH LOCAL UTILITY CO. CODES AND ORDINANCES PRIOR TO BID.  
 VOLTAGE: 120/208V 3Ø 4 WIRE

SYMBOL LIST		
SYMBOL	DESCRIPTION	MOUNTING
(A)	FLUORESCENT FIXTURE & FIXTURE LETTER	CEILING
(A)	FLUORESCENT FIXTURE & FIXTURE LETTER	CEILING
(A)	INCANDESCENT OR H.L.D. FIXTURE & FIXTURE LETTER	WALL/CEILING
(A)	INCANDESCENT OR H.L.D. FIXTURE & FIXTURE LETTER	WALL/CEILING
(A)	EXIT FIXTURE - SHADING (2 NOTES FACED)	CEILING
(A)	GFCI DUPLEX GROUNDED RECEPTACLE	1-3" AFF
(A)	DUPLEX GROUNDED RECEPTACLE	1-3" AFF
(A)	EXTERIOR GFCI RECEPT. WEATHERPROOF	1-3" AFF
(A)	SPECIAL OUTLET, SEE SCHEDULE OR AS NOTED	
(A)	TELEPHONE OUTLET (2-PART, 48" DIA)	1-3" AFF
(A)	SWITCHES (2-POLE-WAY-A-WAY/FLIGHT)	4'-0" TO TOP
(A)	JUNCTION BOX	
(A)	FUSIBLE	
(A)	SPECIAL DEVICE AS NOTED ON PLAN	
(A)	BRANCH CIRCUIT PANEL & PANEL DESIG.	6'-0" TO TOP
(A)	H.D. SAFETY SWITCH (480V/POLE/VOLTAGE)	6'-0" TO TOP
(A)	STARTER (SIZE/POLE/VOLTAGE)	6'-0" TO TOP
(A)	THERMOSTAT (BY H.C.)	4'-0" TO TOP
(A)	MOTOR	
(A)	CONDUIT RUN 2Ø2 & 1Ø2 GRD.-1/2"	CEILING
(A)	CONDUIT RUN 3 Ø2/Ø2 & 2 Ø2/Ø2"	EARTH/FLOOR
(A)	PARTIAL MOMENT (MULTIPLE LOAD LOCATIONS)	
(A)	SEE NOTE #1	
(A)	FEEDER IDENTIFICATION, SEE SCHEDULE	
(A)	WEATHERPROOF	
(A)	INDICATES SWITCHING SCHEME	

GENERAL NOTES	
1.	VERIFY ALL OUTLET LOCATIONS ON THE JOB PRIOR TO ROUGH-IN.
2.	REFER TO RELATED ARCHITECTURAL, MECHANICAL, AND STRUCTURAL DRAWINGS FOR RELATED INFORMATION.
3.	REFER TO THE SPECIFICATIONS FOR DATA NOT ON THE DRAWINGS.
4.	COORDINATE OUTLET BOX LOCATIONS WITH MASONRY TO MINIMIZE CUTTING OF BRICK OR BLOCK.
5.	ALL MOUNTING HEIGHTS TO BOTTOM OF ITEM UNLESS OTHERWISE NOTED.
6.	E.C. SHALL REFER TO MECHANICAL DRAWINGS AND SPECIFICATIONS FOR THE REQUIREMENTS ASSOCIATED WITH WIRING AND CONNECTION OF INTERLOCKING AND CONTROLS OF MECHANICAL UNITS AND THERMOSTAT LOCALS.
7.	CONDUIT RUN IN CONDUITS AS INDICATED. CONDUIT SIZE AS REQUIRED. CONDUIT RUN TO PANEL. DEVICE SIZE AS INDICATED (AMP/POLE). CIRCUIT WITHOUT INDICATION IS ROUTED TO 2ØA.P. BREAKER.
8.	A GROUND CONDUCTOR SIZED PER N.E.C. ARTICLE 250 IS REQUIRED IN ALL POWER, RECEPTACLE, AND LIGHTING CIRCUITS. GROUND CONDUCTORS ARE NOT SHOWN ON DRAWINGS.

FEEDER SCHEDULE						
FEEDER IDENT.	SETS	CONDUCTORS		GROUND SIZE PER SET	BOLDED PER SET	CONDUIT SIZE PER SET
		QUANT. PER SET	SIZE			
1	1	2	#2	#2		3/4"
2	1	4	#2	#6		1 1/2"
3	1	4	#2	#6		3"
4	1	3	#2	#2		3/4"
5	1	Ø	(Ø)	#2		3/4"
6	1	Ø	#2	#2		3/4"

**STONEBRIAR ADDITION ELECTRICAL RISER AND SITE**

**BAUGHMAN COMPANY P.A.**  
 ENGINEERING, SURVEYING, & PLANNING

315 S. G. LUSK, MOHTA, KANSAS 67211  
 316-282-2277

PROJECT NUMBER: **460-76-245-82638-000-000-001**

DESIGN: SVA  
 DRAWN: SVA  
 APPROVED: [Signature]  
 DATE: [Date]  
 SCALE: 1"=10'-0"

SHEET 6 OF 7

VD16ZAP10ZEUU1; DATE: 05/25/95; TIME: 05:05

