

# LATERAL 430, SOUTHWEST INTERCEPTOR SEWER

PROJ. NO. 468-82996

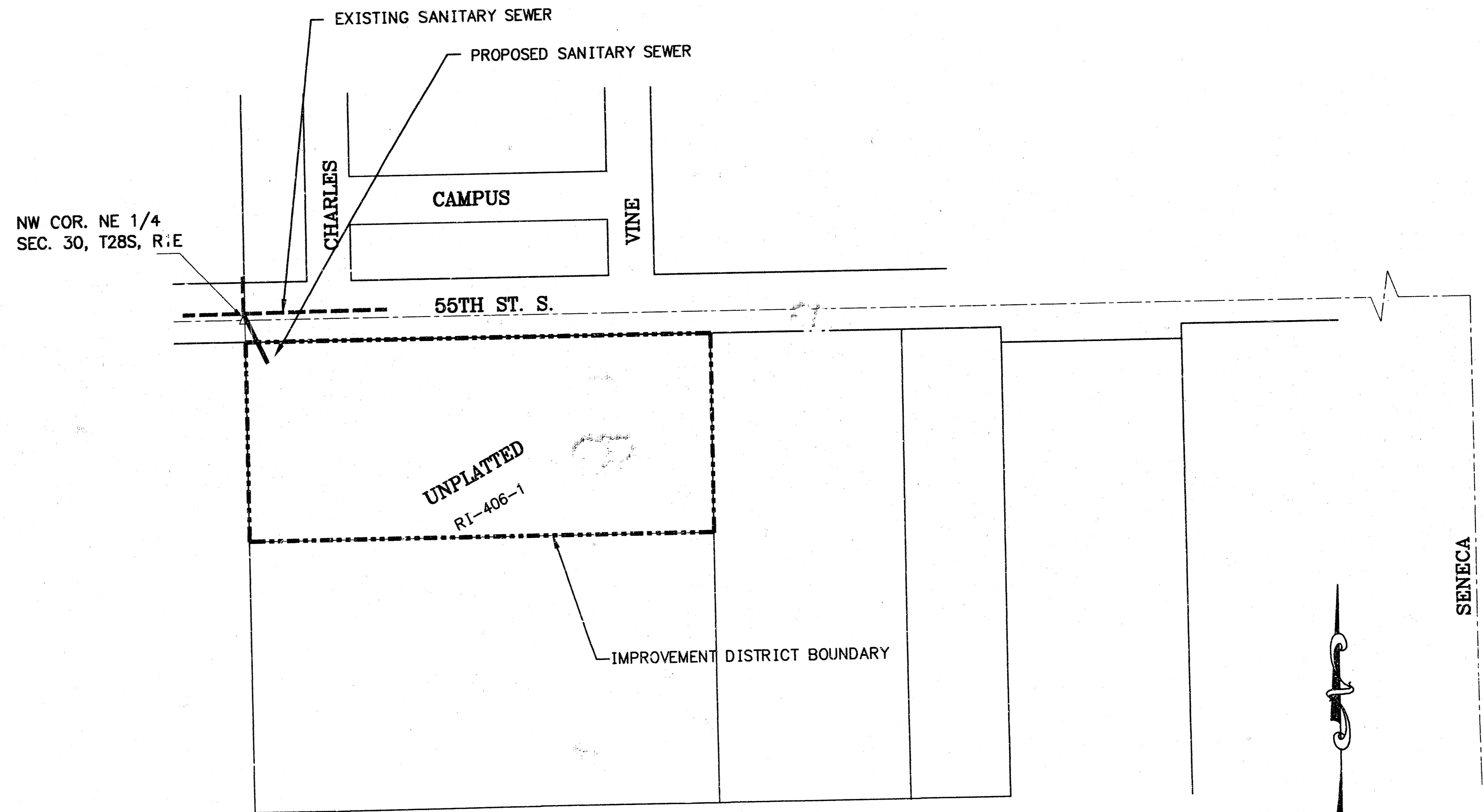
INDEX NO. 743802

CITY OF WICHITA, KANSAS

M. E. LINDEBAK - CITY ENGINEER

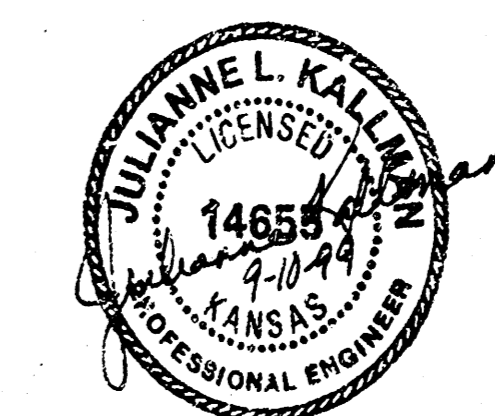
GENERAL NOTES:

1. ALL CONSTRUCTION AND MATERIAL TO COMPLY WITH CITY OF WICHITA SPECIFICATIONS AND STANDARDS.
2. THE CONTRACTOR SHALL NOTIFY THE UTILITY SERVICE COMPANIES TO FLAG THEIR UNDERGROUND LINES AND REQUEST ANY OVERHEAD POLE/LINE ADJUSTMENTS 48 HOURS PRIOR TO CONSTRUCTION.  
KANSAS ONE-CALL 1-800-344-7233
3. THE UNDERGROUND UTILITY SERVICE LINES AND OVERHEAD UTILITY POLE LINES ARE TO BE ADJUSTED AS NECESSARY BY OTHERS PRIOR TO CONSTRUCTION UNLESS THE PLANS SPECIFICALLY CALL FOR THEIR ADJUSTMENT BY THE CONTRACTOR. EXISTING UTILITIES AND THEIR LOCATION, AS SHOWN ON THE PLANS, REPRESENT THE BEST INFORMATION OBTAINABLE FOR DESIGN. LOCATION INFORMATION HAS BEEN OBTAINED FROM THE VARIOUS UTILITY COMPANIES AND IS EITHER FROM COMPANY RECORD DRAWINGS OR COMPANY PROVIDED FIELD LOCATIONS. THE CONTRACTOR WILL BE REQUIRED TO WORK AROUND EXISTING UTILITIES WITHIN THE RIGHT-OF-WAY WHICH DO NOT CONFLICT WITH PROPOSED CONSTRUCTION.
4. THE CONTRACTOR SHALL GIVE ALL PROPERTY OWNERS AND/OR TENANTS DIRECTLY AFFECTED BY THE CONSTRUCTION OF THIS PROJECT A MINIMUM OF FIVE (5) DAYS ADVANCE WRITTEN NOTICE PRIOR TO START OF CONSTRUCTION.
5. ANY TREE OR SHRUB REMOVAL MUST BE APPROVED BY THE FIELD ENGINEER.
6. THE CONTRACTOR SHOULD EXAMINE THE CONSTRUCTION SITE PRIOR TO BIDDING AND BE SATISFIED AS TO THE WORK SHOWN FOR COMPLETION.
7. ANY FENCE REMOVED DURING CONSTRUCTION MUST BE REPLACED AND RESTORED TO ORIGINAL CONDITION.
8. UTILITY EASEMENT AND FENCE RESTORATION SHALL BE SUSPENDED FOR THREE WEEKS FROM THE DATE THE SEWER IS TESTED AND ACCEPTED BY THE ENGINEERING DIVISION, DEPARTMENT OF PUBLIC WORKS, TO ALLOW PROPERTY OWNERS TIME TO INSTALL HOOKUPS TO THE SEWER MAIN. CONTRACTORS SHALL NOTIFY PROPERTY OWNERS, IN WRITING, OF THIS AGREEMENT.
9. THE CONTRACTOR WILL BE REQUIRED TO REESTABLISH ANY PROPERTY IRONS OR THIMBLES WHICH ARE DAMAGED OR DESTROYED BY CONSTRUCTION OPERATIONS. SUCH IRONS OR THIMBLES SHALL BE REESTABLISHED BY A LICENSED LAND SURVEYOR IN ACCORDANCE WITH STATE LAWS.



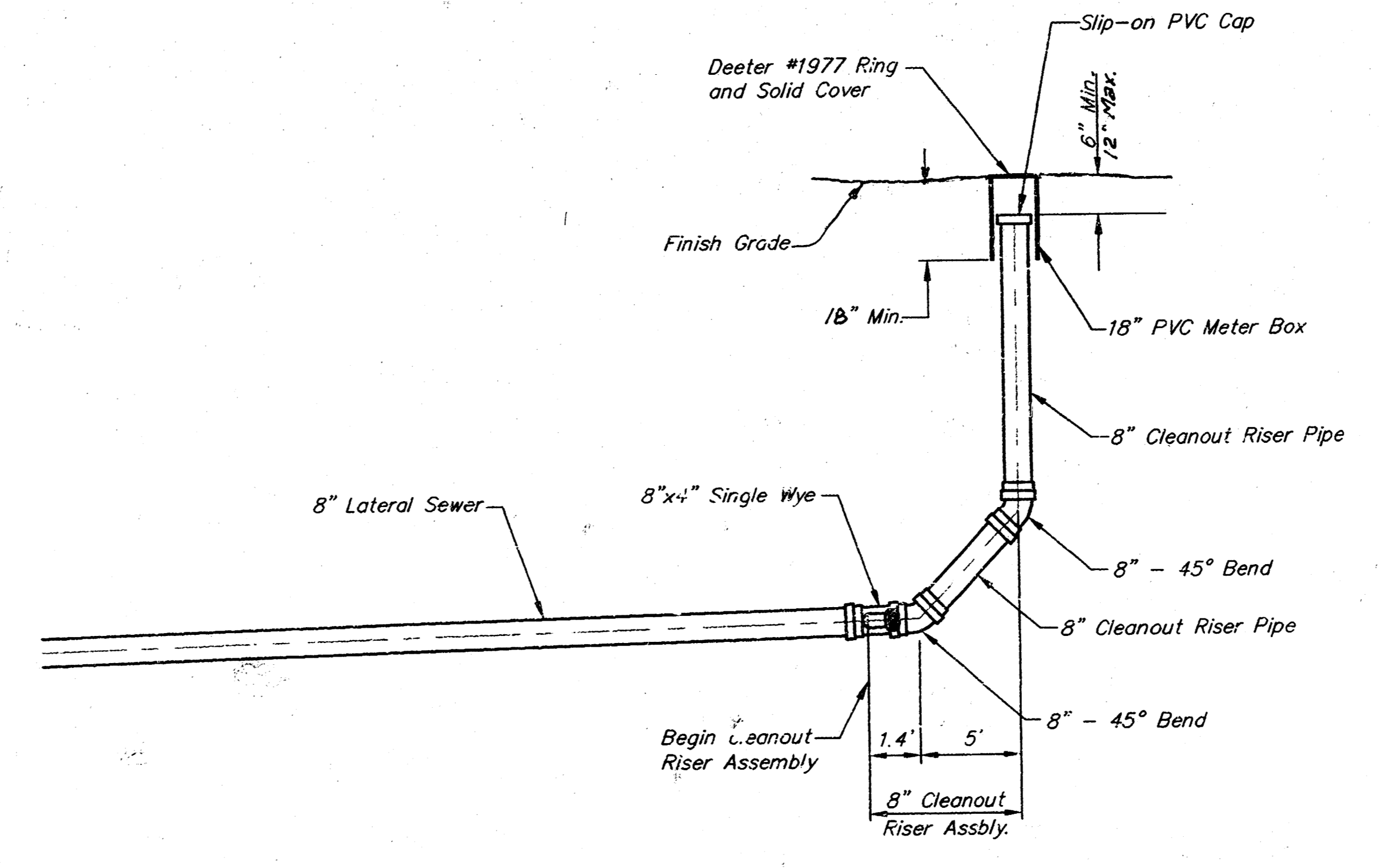
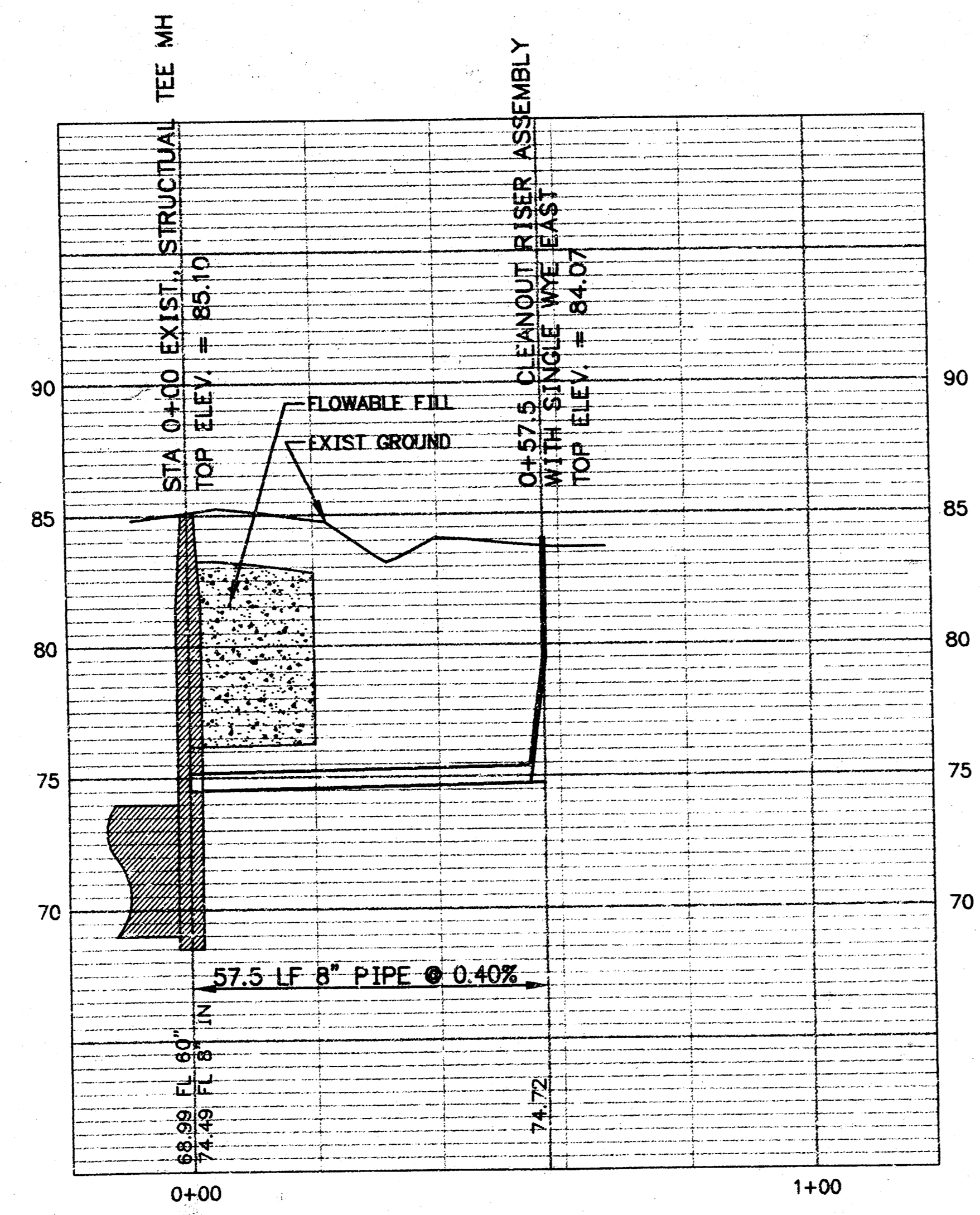
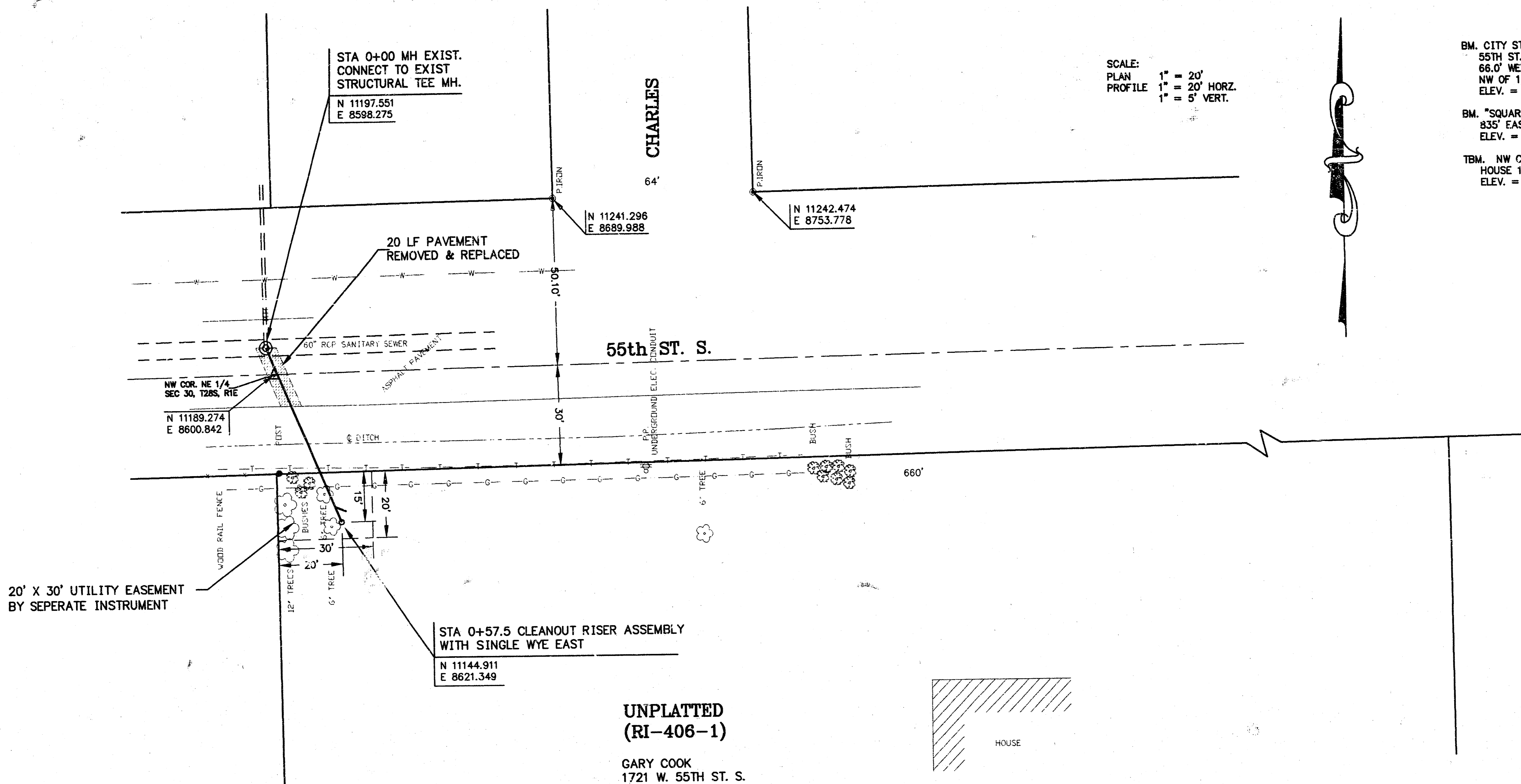
**INDEX OF SHEETS**

SHEET 1	-	TITLE SHEET
SHEET 2	-	PLAN/PROFILE
SHEET 3	-	MANHOLE CONNECTION DETAILS
SHEET 3	-	THIMBLE DETAIL



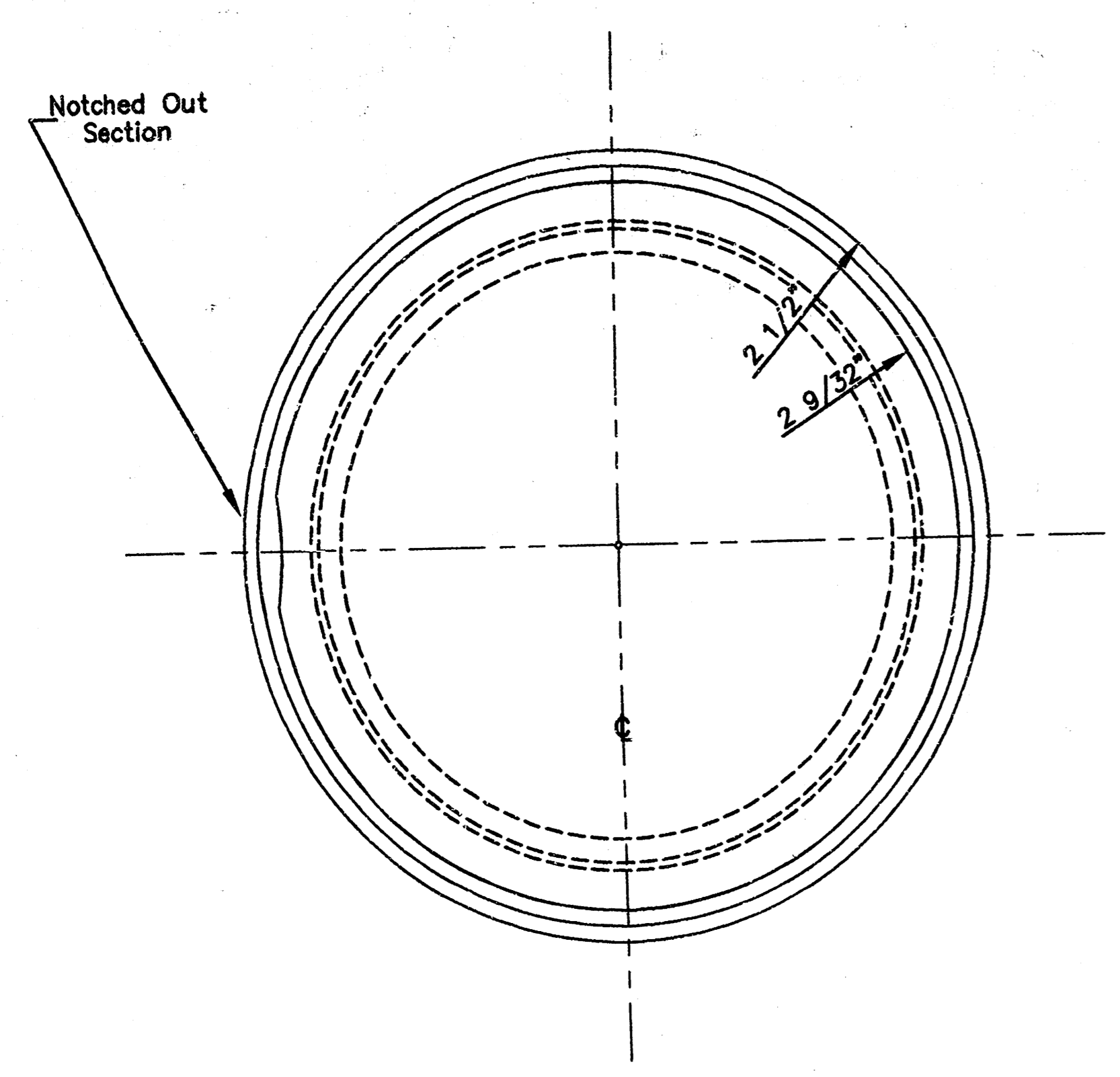
SCALE: 1" = 100'

*Booked  
P-107  
11-23-99  
RDL  
Per Plan*

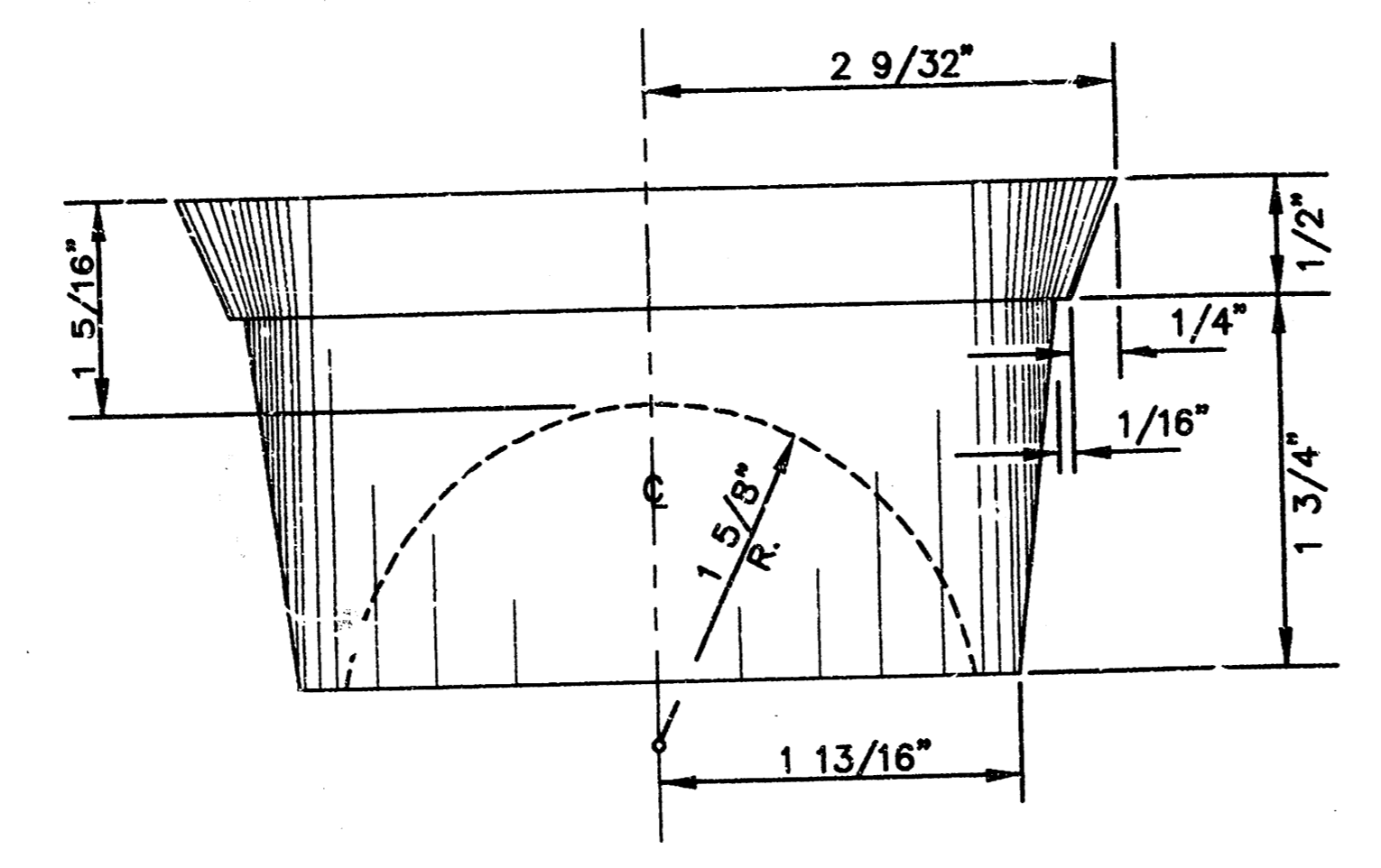


8" CLEANOUT RISER ASSEMBLY

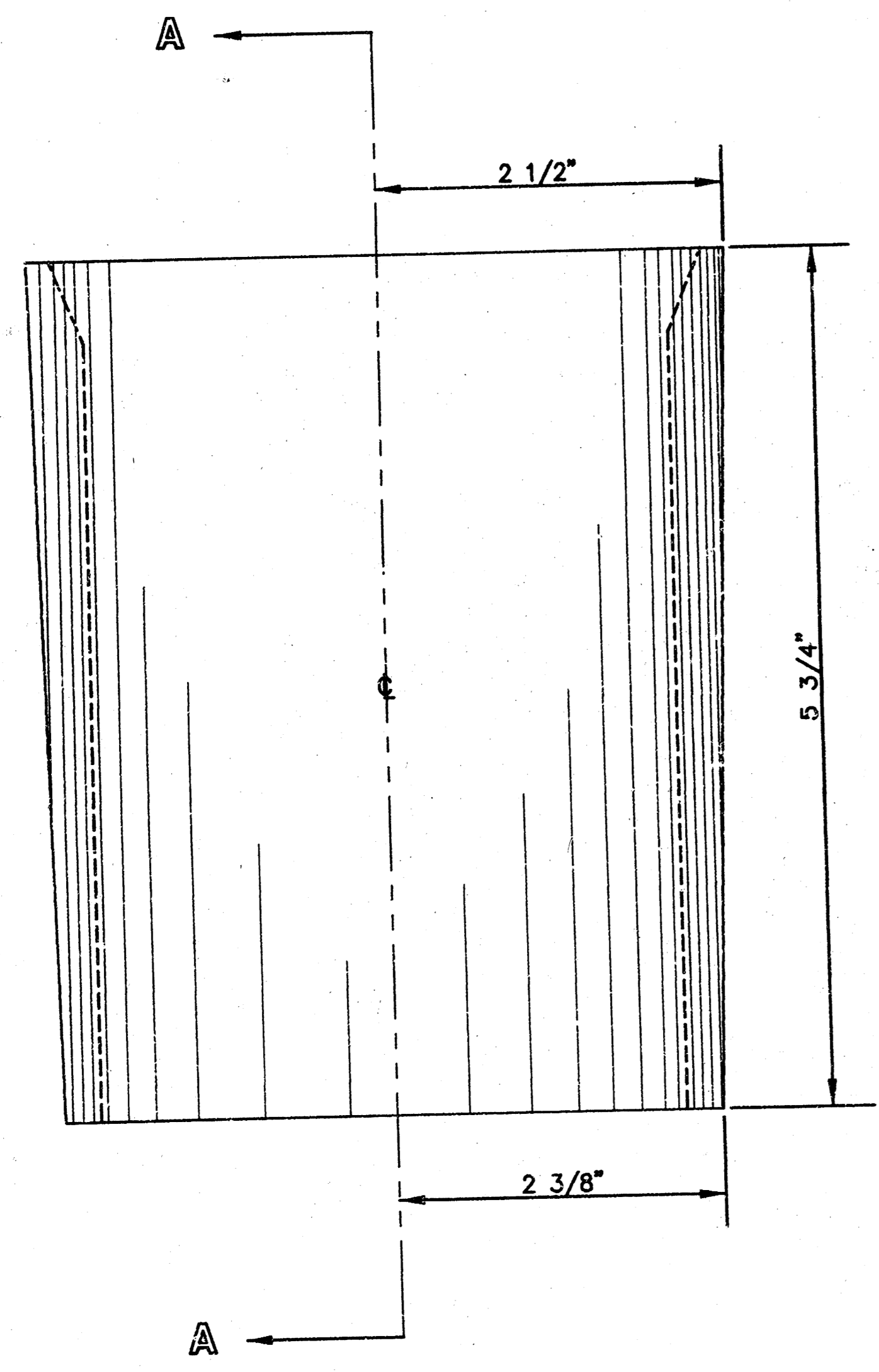
<p>THE CITY OF WICHITA</p> <p>CITY ENGINEER'S OFFICE        CITY HALL - SEVENTH FLOOR        435 NORTH MAIN STREET        WICHITA, KANSAS 67202        (316) 268-4001        (316) 268-4114 FAX</p>	<b>LATERAL 430, SWI</b>	
	M. E. LINLEY, P.E. - CITY ENGINEER	
	PROJECT NUMBER 468-82996	DATE JULY 99
	SHEET 2 OF 3	



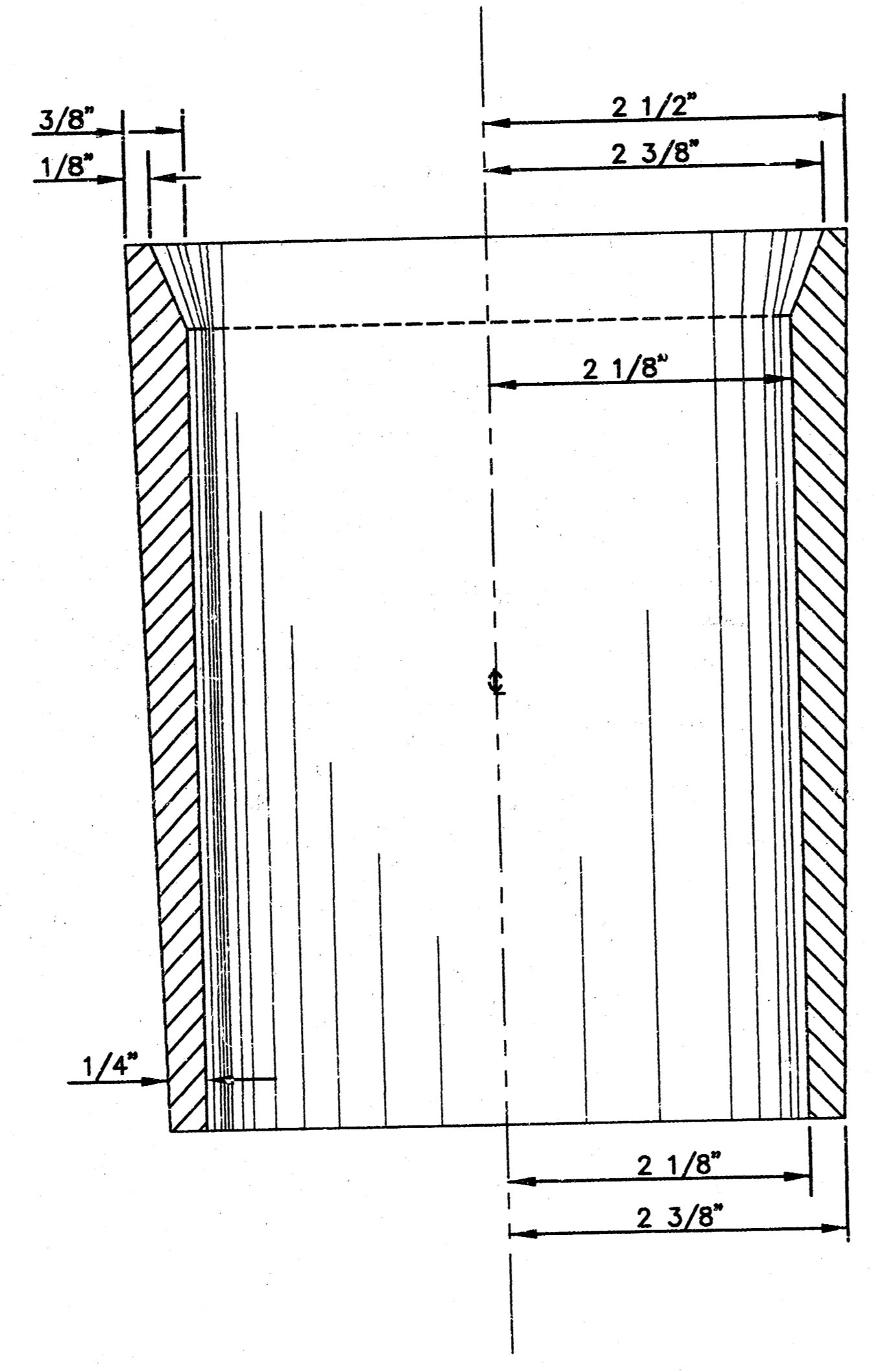
Cylinder & Plug Plan View



Plug Side View



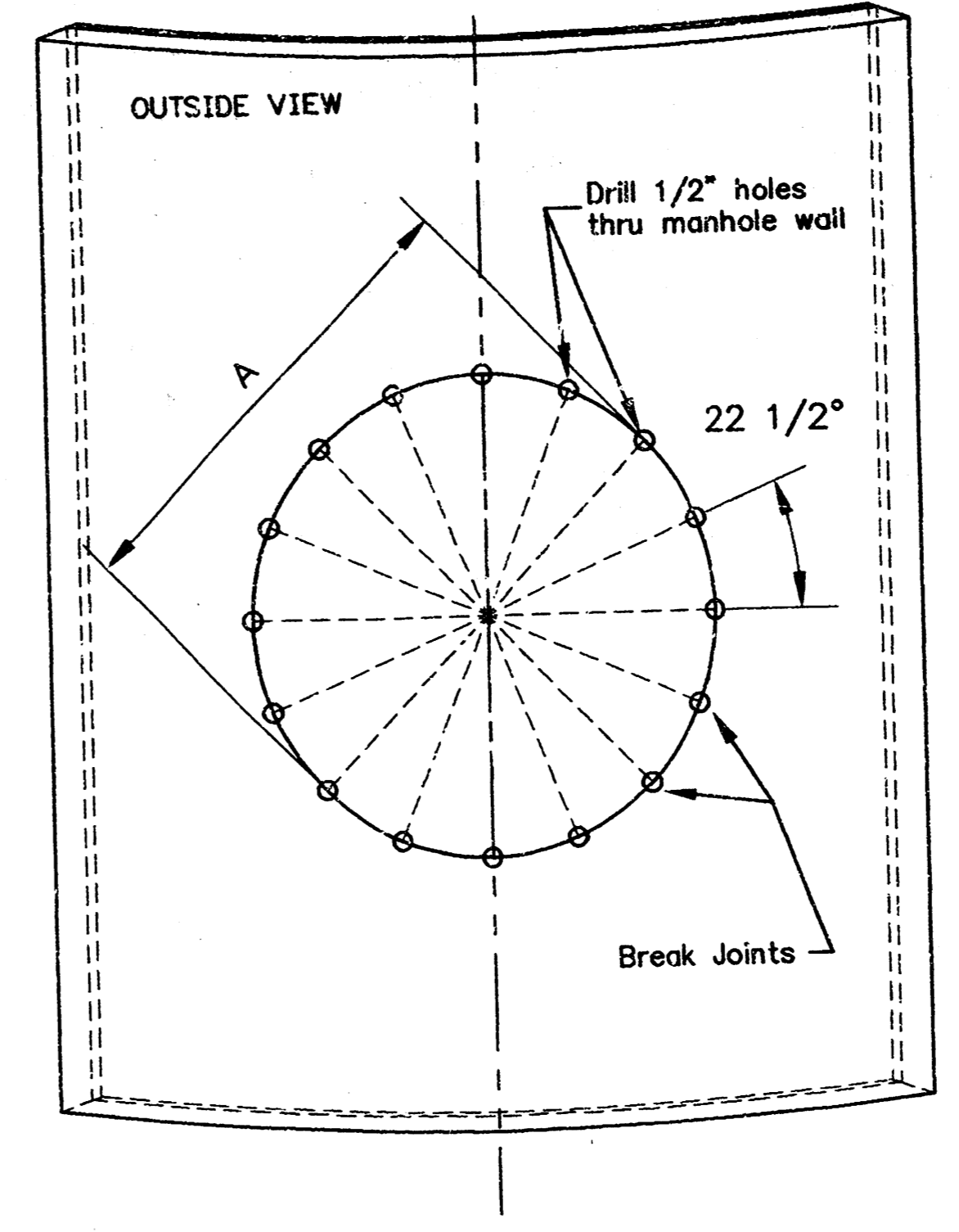
Cylinder Side View



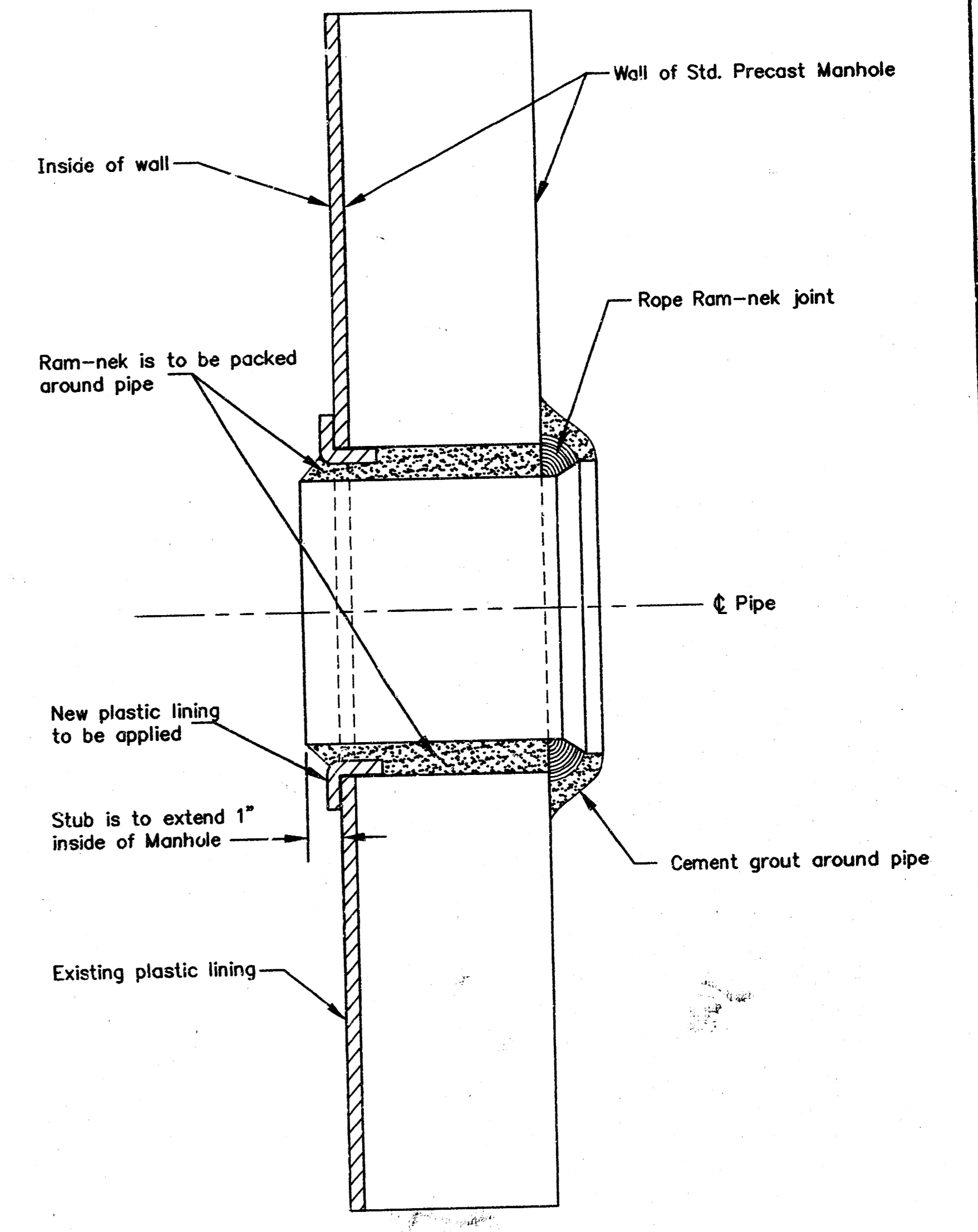
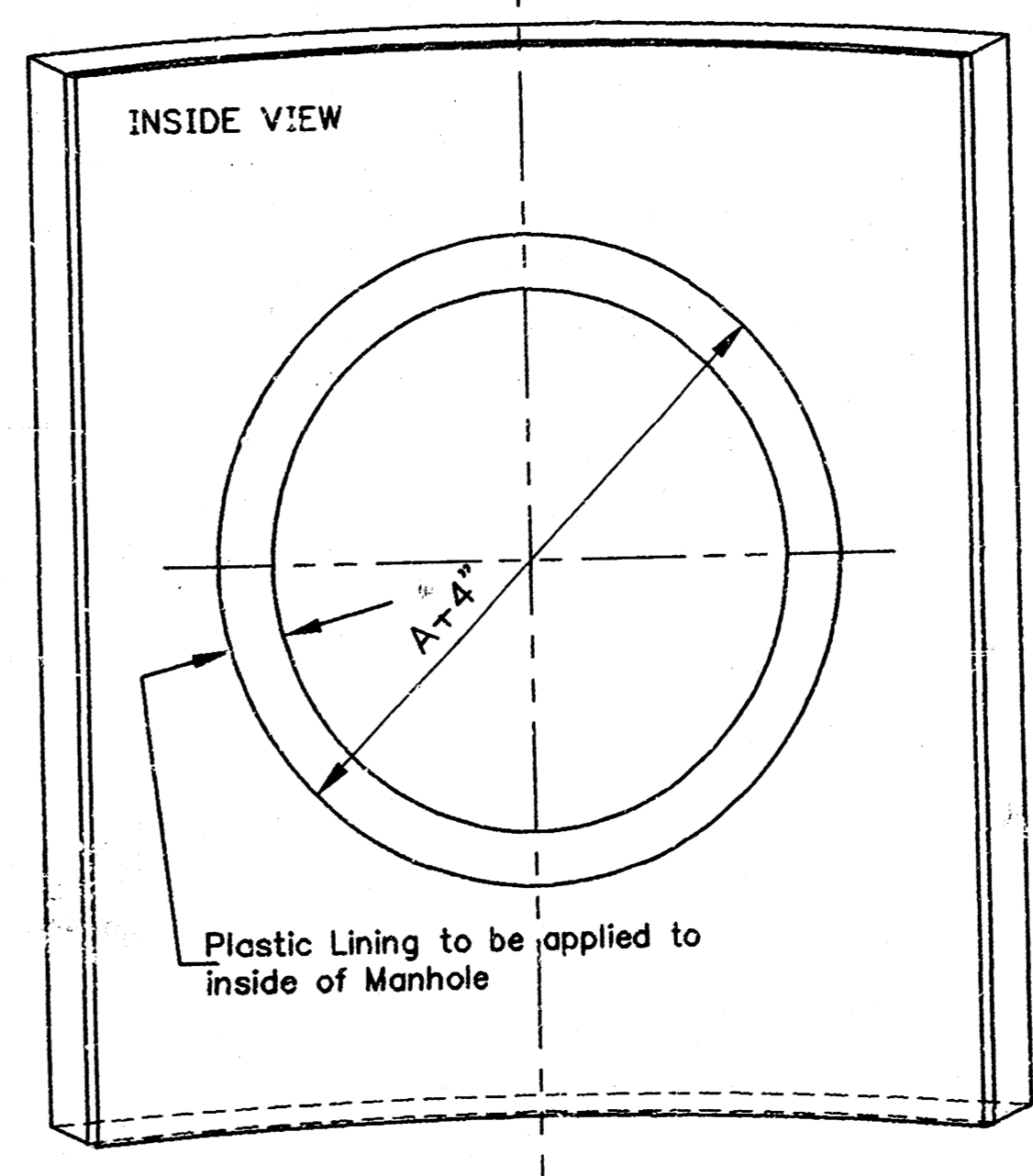
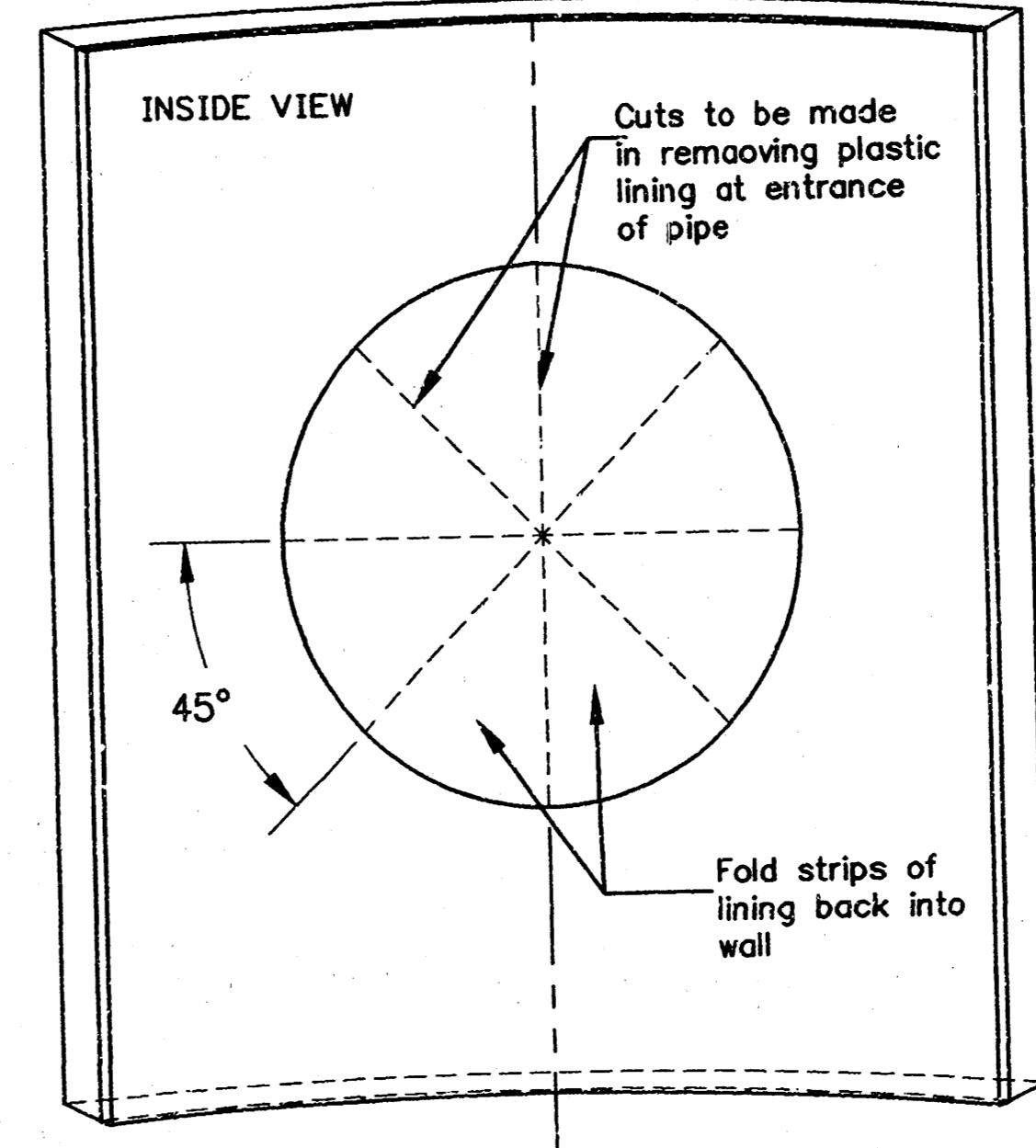
Cylinder Section AA View

NOTE: Details Drawn to Full Scale.  
 Cylinder & Plug Casting Shall Conform to Class 25 S of ASTM Designation A48  
 Cylinder Weight = 6.36 lbs.  
 Plug Weight = 5.25 lbs.

<p>THE CITY OF WICHITA        CITY ENGINEER'S OFFICE        CITY HALL - SEVENTH FLOOR        455 NORTH MAIN STREET        WICHITA, KANSAS 67202        (316) 268-4501        (316) 268-4114 FAX</p>	<b>STANDARD THIMBLE DETAIL</b>	
	M. E. LINDEBAK P.E. - CITY ENGINEER	
	PROJECT NUMBER 468-82996	INDEX CODE 743802
	DATE MAR 96	



A = OUTSIDE DIAMETER OF PIPE PLUS 2"



<p>THE CITY OF WICHITA        CITY ENGINEER'S OFFICE        CITY HALL - SEVENTH FLOOR        455 NORTH MAIN STREET        WICHITA, KANSAS 67202        (316) 268-4501        (316) 268-4114 FAX</p>	<b>PIPE CONNECTION TO PLASTIC LINED CONCRETE MANHOLE</b>	
	M. E. LINDEBAK P.E. - CITY ENGINEER	
	PROJECT NUMBER 468-82996	INDEX CODE 743802
	DATE JULY 99	SHEET 3 OF 3