

CONSTRUCTION PLANS
 SANITARY SEWER EXTENSIONS
ABERDEEN 3RD ADDITION - PHASE 2

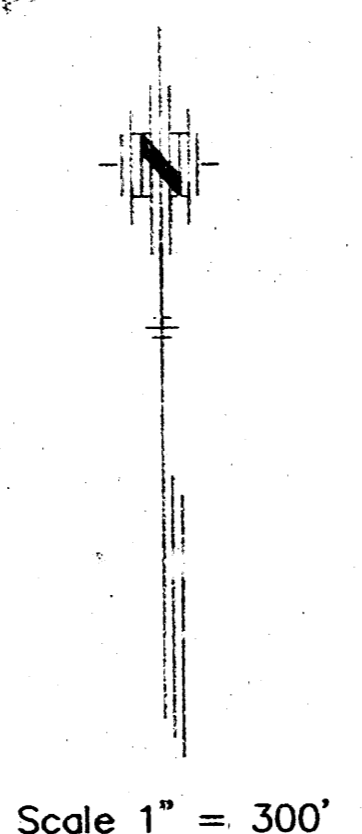
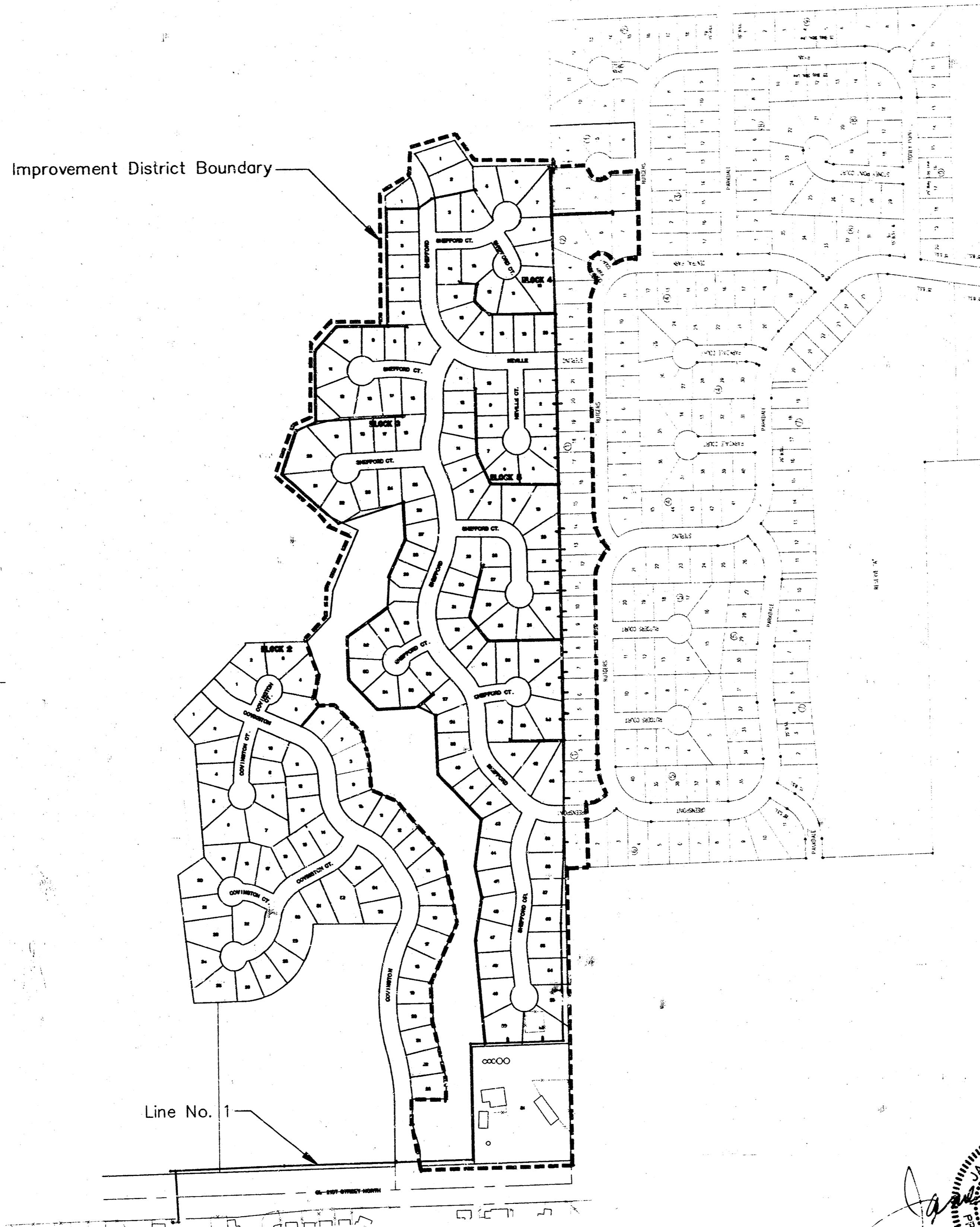
TO
THE CITY OF WICHITA, KANSAS
LATERAL 432, SOUTHWEST INTERCEPTOR SEWER

MICHAEL E. LINDEBAK, P.E. - CITY ENGINEER
 PROJECT NO. 468-83004
 OCA NO. 743833

GENERAL NOTES:

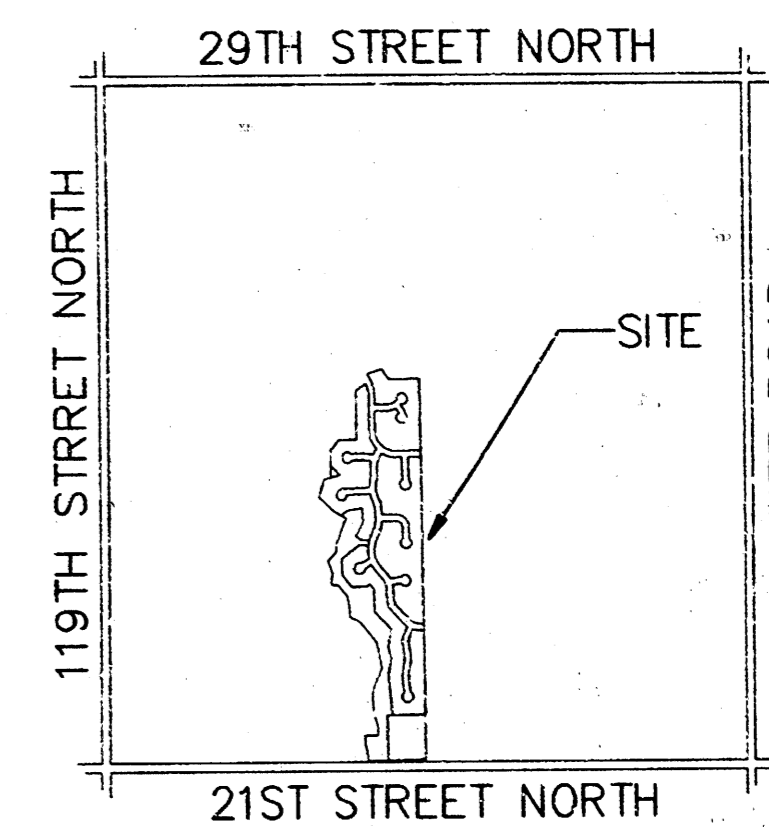
- Existing utility lines and their location, as shown on the plans, represent the best information obtainable for design. The contractor will be required to work around existing utilities within the right-of-way which do not conflict with proposed construction.
- Rubble from the removal of miscellaneous structures and excess excavation which is to be wasted shall be disposed of on sites to be provided by the Contractor. These sites shall be approved by the Engineer as to suitability, appearance and site location. Locations that, in the opinion of the Engineer, will leave an unsightly appearance will not be approved.

 All disposal sites must be approved by the Kansas Department of Health and Environment. Material either stockpiled or disposed of in a flood plain would require a Kansas State Board of Agriculture permit. Any material dumped in waters of the United States or wetlands is subject to U.S. Corps of Engineers permitting regulations. Any material buried or stockpiled beyond approved construction limits would require additional archaeological investigations unless buried in a previously approved borrow location.
- The Contractor shall be responsible for maintaining continuous flow of sewage through construction. Contractor's proposed method for maintaining sewage flow shall be approved by the Engineer. Cost of maintaining flow of sewage through construction will not be paid for directly and this cost shall be considered as subsidiary to the other pay items of the work.
- The Contractor shall be responsible for preserving property irons. The Contractor will be required to re-establish any property irons which are damaged or destroyed by his construction operations. Such irons shall be re-established by a licensed land surveyor in accordance with state laws.
- Trees and shrubs in public right-of-way which are in direct conflict with proposed new construction shall be removed by the Contractor with the Engineer's approval. Trees and shrubs which are not in direct conflict with the proposed new construction shall be saved and protected from damage.
- Contractor shall vacuum test all manholes according to the City of Wichita standard specifications.
- The tops of all Manholes to be set 0.4 feet above existing ground unless otherwise noted.
- Sewer service lines that cross over the top of water mains shall be encased in concrete, 10 feet each side of the crossing. If the sewer crosses below the water line with less than 2 feet of clearance, the sewer line joints must be at least 10 feet away from the water line or the sewer must be encased in concrete as described above. 12" clearance must be maintained between the sewer and water lines.
- All areas disturbed by sewer construction, i.e. R/W, easements, and adjacent properties shall be restored with the same grass/sod as per AR 78.



INDEX

TITLE SHEET	SHEET 1
SANITARY SEWER KEYMAP	SHEET 2
LINE NO. 1	SHEET 3-4
TYPE "P" MANHOLE	SHEET 5
COORDINATE POINTS LIST	SHEET 6-7
ABERDEEN PHASE 3 ADDITION PLAT	SHEET 8-9



LOCATION MAP
 No Scale

BENCH MARKS

(City of Wichita Datum)

- City of Wichita Benchmark disc, 67' south of centerline 21st St. & 79' south of section line, and 46' east of centerline 119th St. Elev. 172.08
- 80d nail in power pole, 30' east and 50' south of Northwest Corner of Government Lot 6 in SW Quarter of Section 6, T27S, R1W. Elev. 172.08
- 80d nail in power pole 50' south of NE corner of Government Lot 3 in NW Quarter of Section 6, T27S, R1W. Elev. 179.98
- 80d nail in power pole 40' west and 40' north of the NW Corner of the NW Corner of Sec. 6, T27S, R1W. Elev. 175.05

Booked
 P-152, P-153, P-154
 10-24-00
 R. Loomis
 AS. BUILT

FEBRUARY 2000

PLANS PREPARED BY

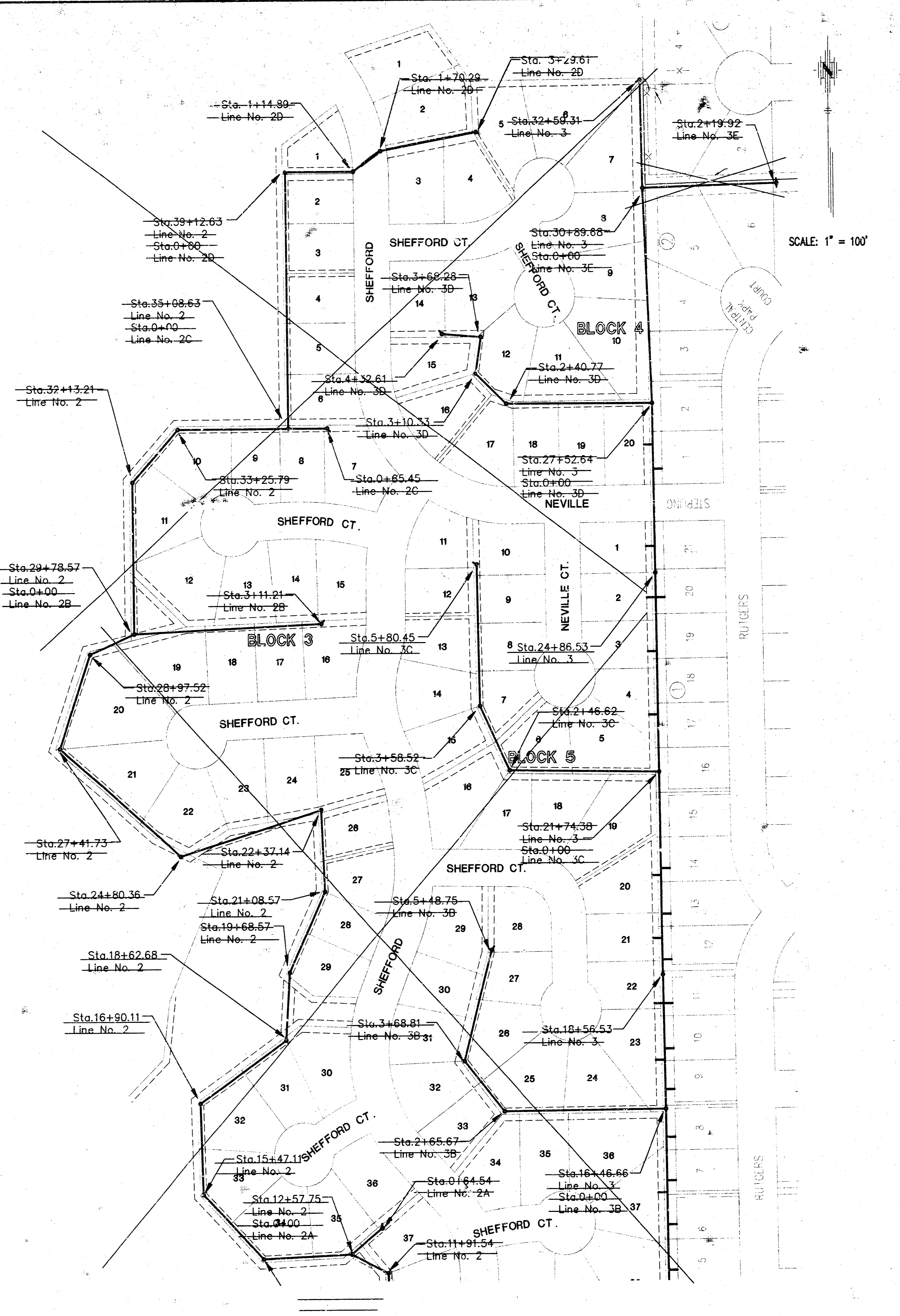
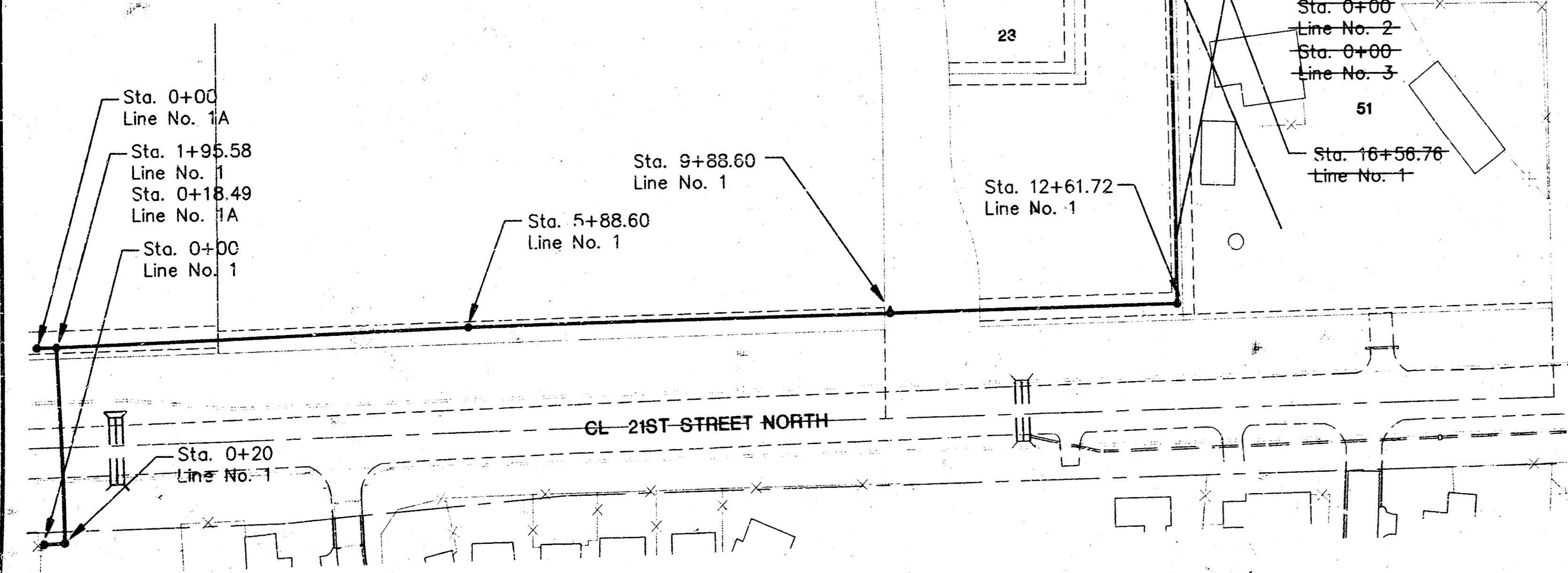


Michael E. Lindebak
 5-17-00

SCALE: 1" = 100'

SCALE: 1" = 100'

RISER SUMMARY													
No.	Line	Sta./Dir.	Lot No.	Block No.	Aber. Add.	Ever. Add.	Saddle Size	Information Only			Record Information		
								10" Main FL	8" Main FL	4" Pipe	Proposed/Actual	Upstream	Downstream
1	3	0+78.47/Lt.	50	3	X		10"x4"	151.75	8'	14'	160.2/		
2	3	2+05.05/Lt.	52	3	X		10"x4"	152.00	9'	14'	160.5/		
3	3	9+55.98/Rt.	1	1		X	10"x4"	153.60	7'	14'	160.4/		
4	3	11+05.59/Rt.	1	1		X	10"x4"	153.93	10'	19'	164.0/		
5	3	11+96.91/Lt.	43	5	X		10"x4"	154.07	8'	11'	162.0/		
6	3	13+73.99/Lt.	38	5	X		8"x4"	154.49	6'	14'	163.4/		
7	3	13+93.88/Rt.	5	1		X	8"x4"	154.57	9'	14'	164.6/		
8	3	14+65.88/Rt.	6	1		X	8"x4"	154.79	10'	14'	164.6/		
9	3	15+15.37/Lt.	37	5	X		8"x4"	154.93	7'	14'	162.2/		
10	3	15+34.06/Rt.	7	1		X	8"x4"	154.97	10'	14'	164.9/		
11	3	16+02.17/Lt.	8	1		X	8"x4"	155.17	9'	14'	164.0/		
12	3	16+76.94/Rt.	9	1		X	8"x4"	155.40	8'	14'	163.0/		
13	3	17+23.08/Lt.	23	5	X		8"x4"	155.54	6'	14'	161.1/		
14	3	17+40.70/Rt.	10	1		X	8"x4"	155.59	8'	14'	161.4/		
15	3	18+11.50/Rt.	22	5	X		Dbl 8"x4"	155.80	6'	14'	162.1/		
16	3	18+11.50/Rt.	11	1		X	Dbl 8"x4"	155.80	8'	14'	164.0/		
17	3	18+79.94/Rt.	12	1		X	8"x4"	156.01	10'	14'	165.6/		
18	3	19+13.65/Lt.	21	5	X		8"x4"	156.12	7'	14'	163.0/		
19	3	19+51.54/Rt.	13	1		X	8"x4"	156.22	5'	14'	166.2/		
20	3	20+12.20/Lt.	20	5	X		8"x4"	156.41	6'	14'	162.7/		
21	3	20+22.94/Rt.	14	5	X		8"x4"	156.44	9'	14'	165.4/		
22	3	22+64/Lt.	4	5	X		8"x4"	157.16	5'	14'	161.7/		
23	3	23+63/Lt.	3	5	X		8"x4"	157.46	5'	14'	162.8/		
24	3	24+47.70/Lt.	2	5	X		Dbl 8"x4"	157.72	6'	14'	163.6/		
25	3	24+47.70/Rt.	20	1		X	Dbl 8"x4"	157.71	9'	14'	166.4/		
26	3	25+28.16/Lt.	1	5	X		8"x4"	157.95	7'	14'	164.7/		
27	3	26+49.21/Rt.	1	2		X	8"x4"	158.32	8'	14'	166.5/		
28	3	26+87.41/Lt.	20	4	X		8"x4"	158.43	6'	14'	164.5/		



ABERDEEN 3RD ADDITION PHASE 2
SANITARY SEWER KEY MAP

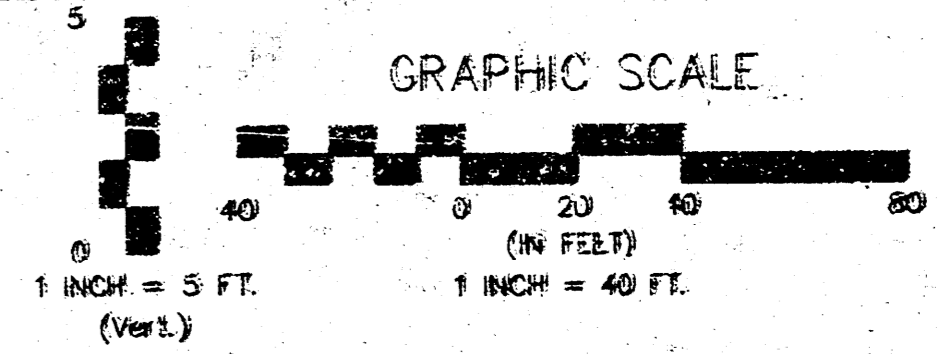
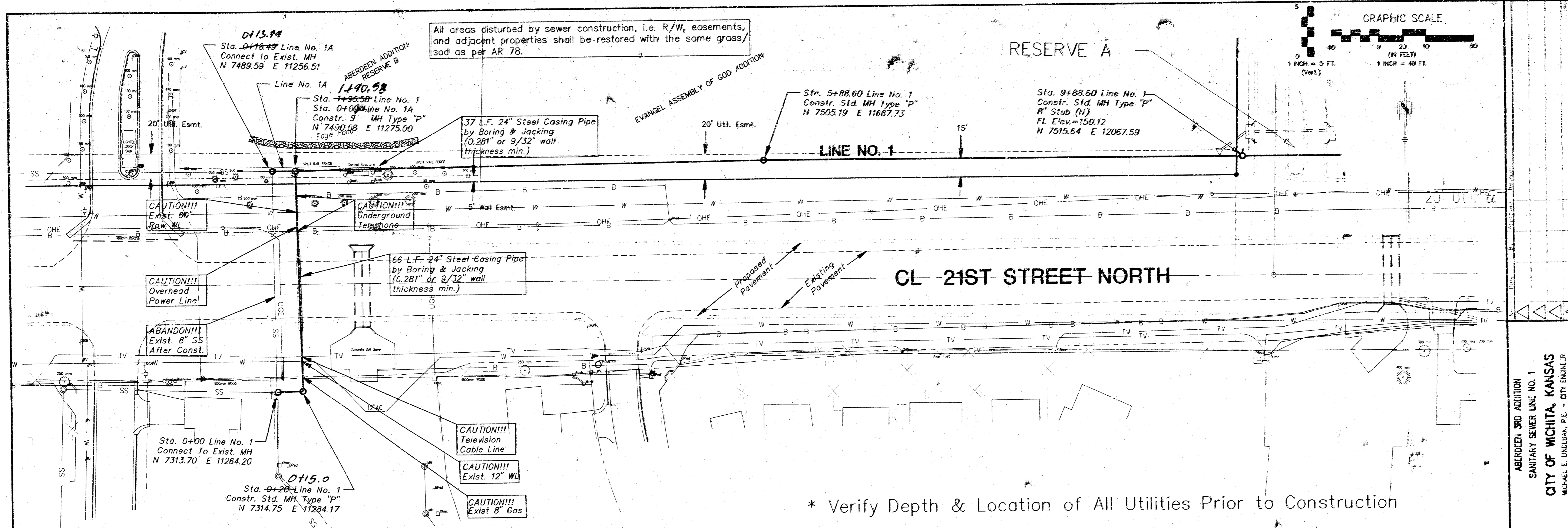
CITY OF WICHITA, KANSAS
MICHAEL E. UNDERKAY, P.E. - CITY ENGINEER
C.O.W. Proj. No. 448-88402 CCA# 734659

POE & ASSOCIATES OF KANSAS, INC.
1501 S. WILSON, SUITE 200 WICHITA, KS 67202-1116 TEL: 316-262-4444

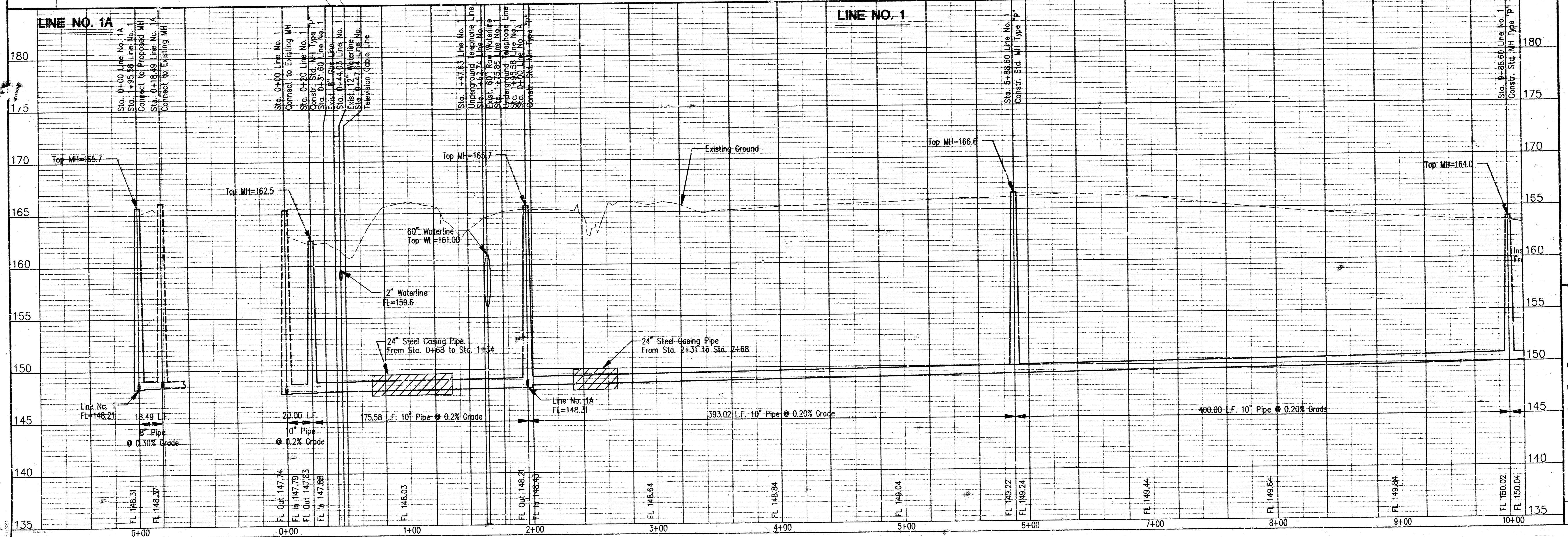
FINAL

Engineer: J. Libert
Drawn By: M. Perez
Proj. Job No.: 16564
Date: February 2000

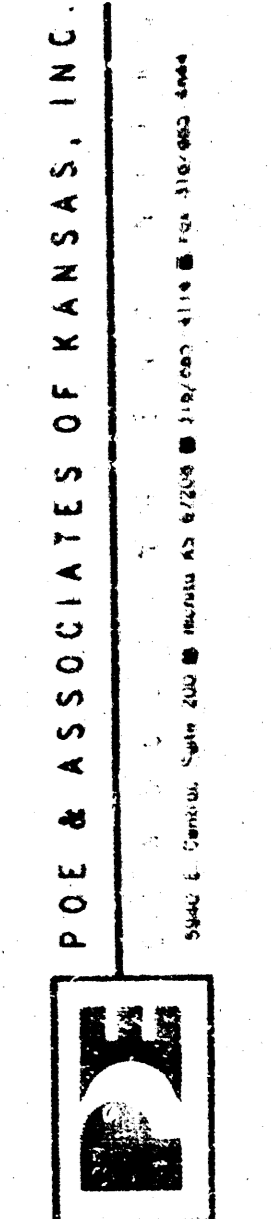
G:\APPS\DWG\16564\16564.dwg Mod May 17 11:54:03 2000 Jason Dickman - Poe & Associates of Kansas, Inc.



* Verify Depth & Location of All Utilities Prior to Construction

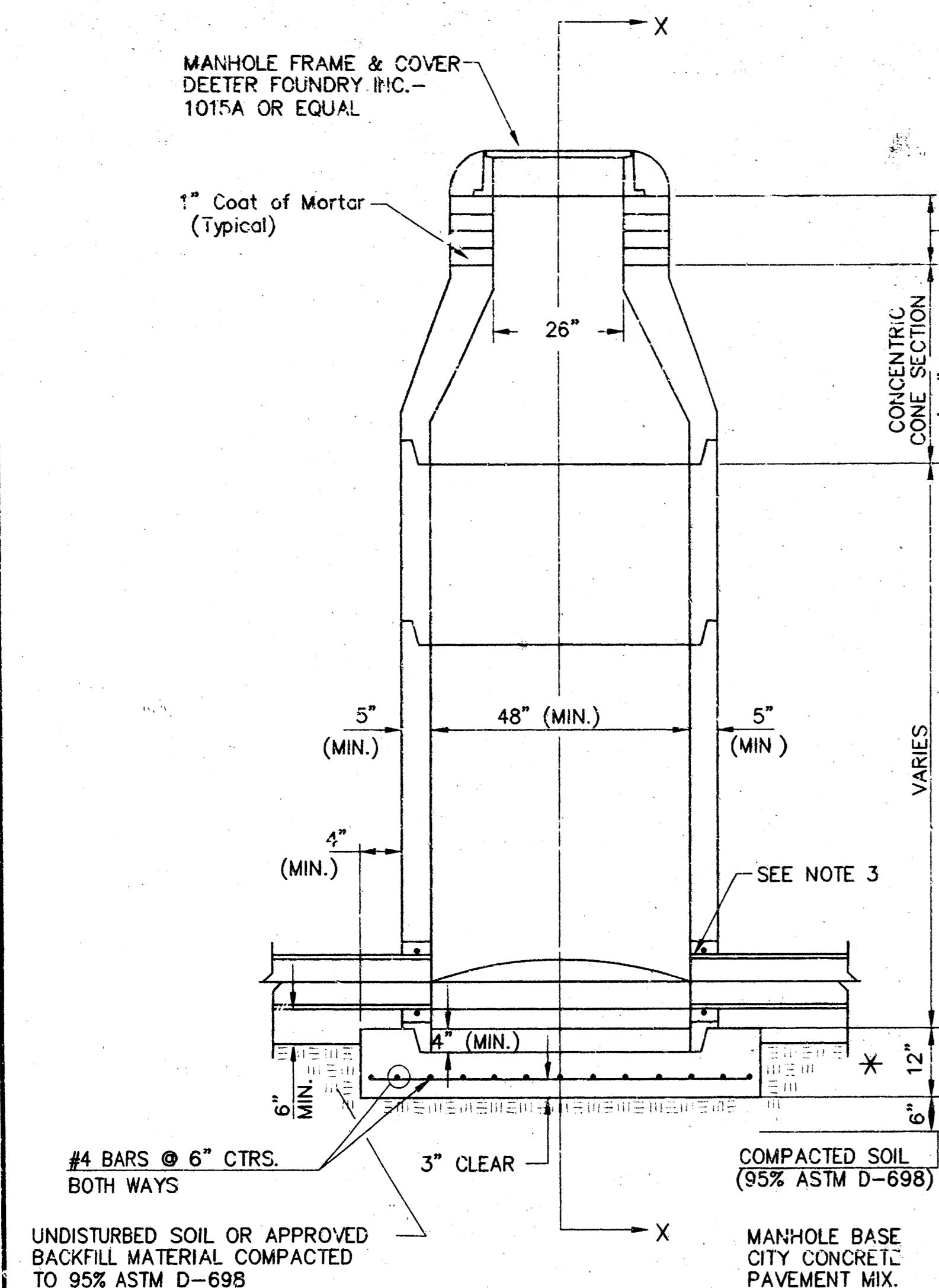


ABERDEEN 3RD ADDITION
 SANITARY SEWER LINE NO. 1
 CITY OF WICHITA, KANSAS
 MICHAEL E. UNDLAND, P.E. - CITY ENGINEER
 Proj. No. 488-63064 GCA# 74333

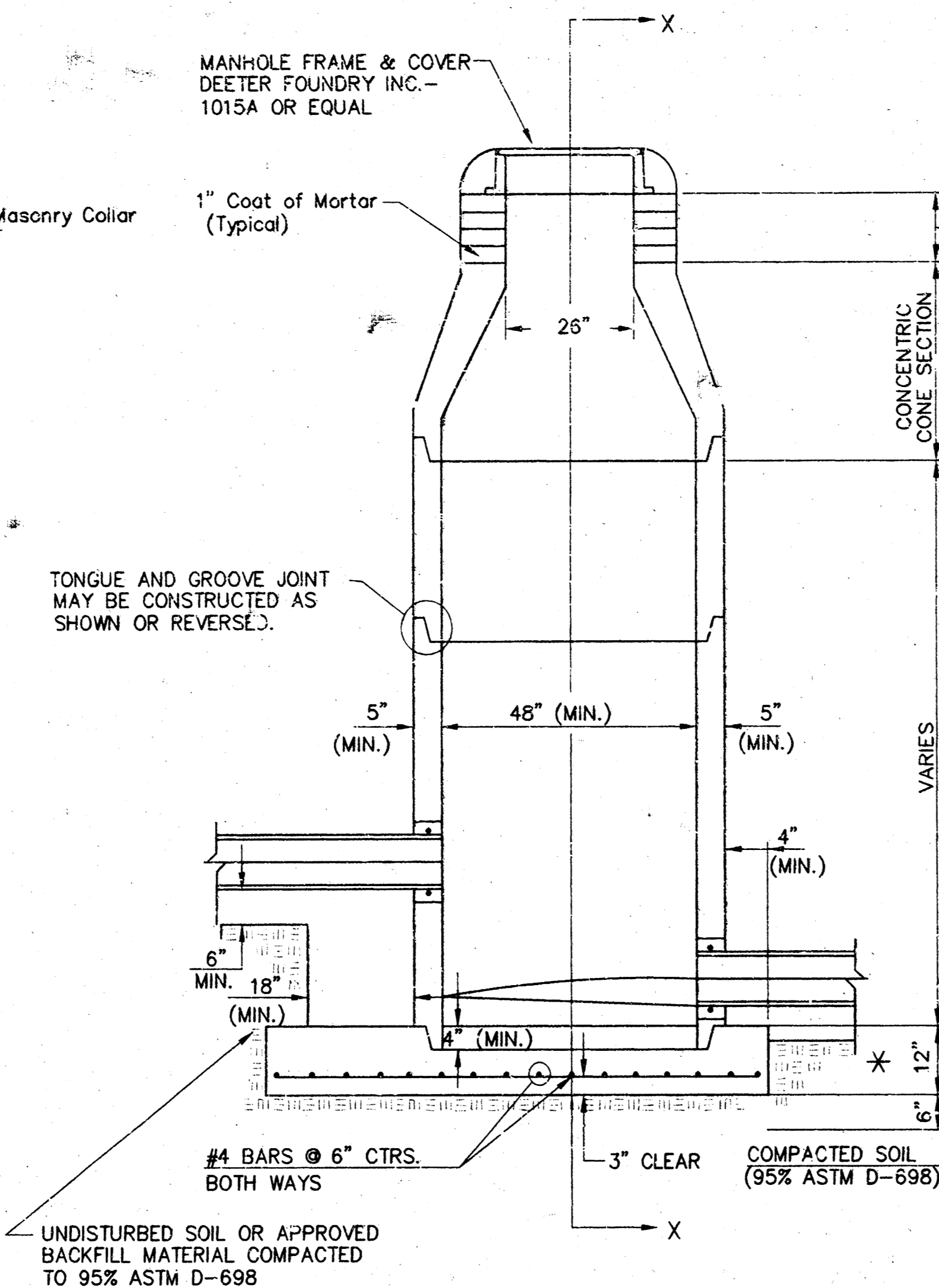


FINAL
 Designed By: J. Ubert / J. Dickman
 Drawn By: M. Peitz
 Prev Job No.: 1950A
 Date: February 2000

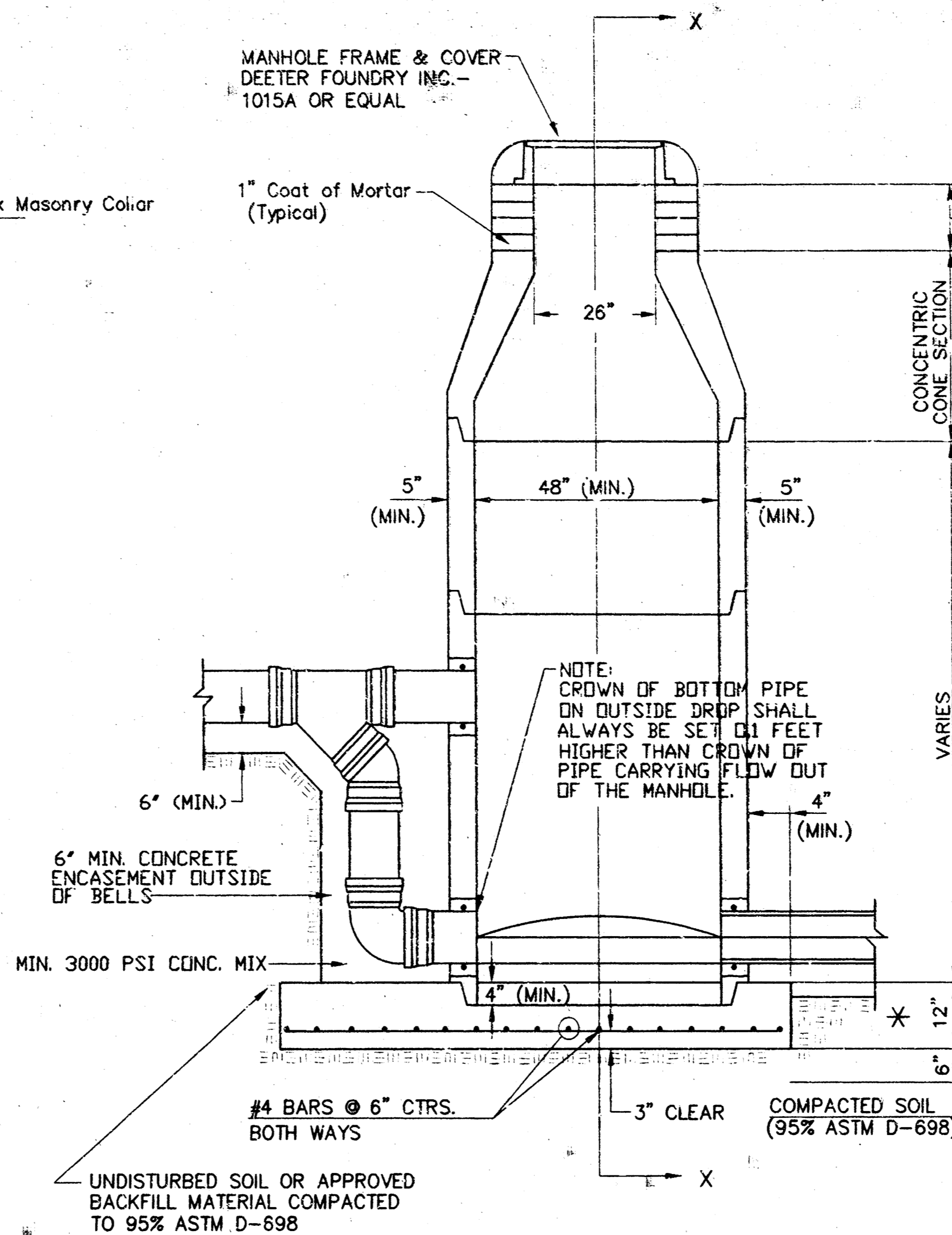
SEWER APPURTENANCES DETAILS



TYPE P STANDARD MANHOLE



TYPE P INSIDE DROP MANHOLE



TYPE P OUTSIDE DROP MANHOLE

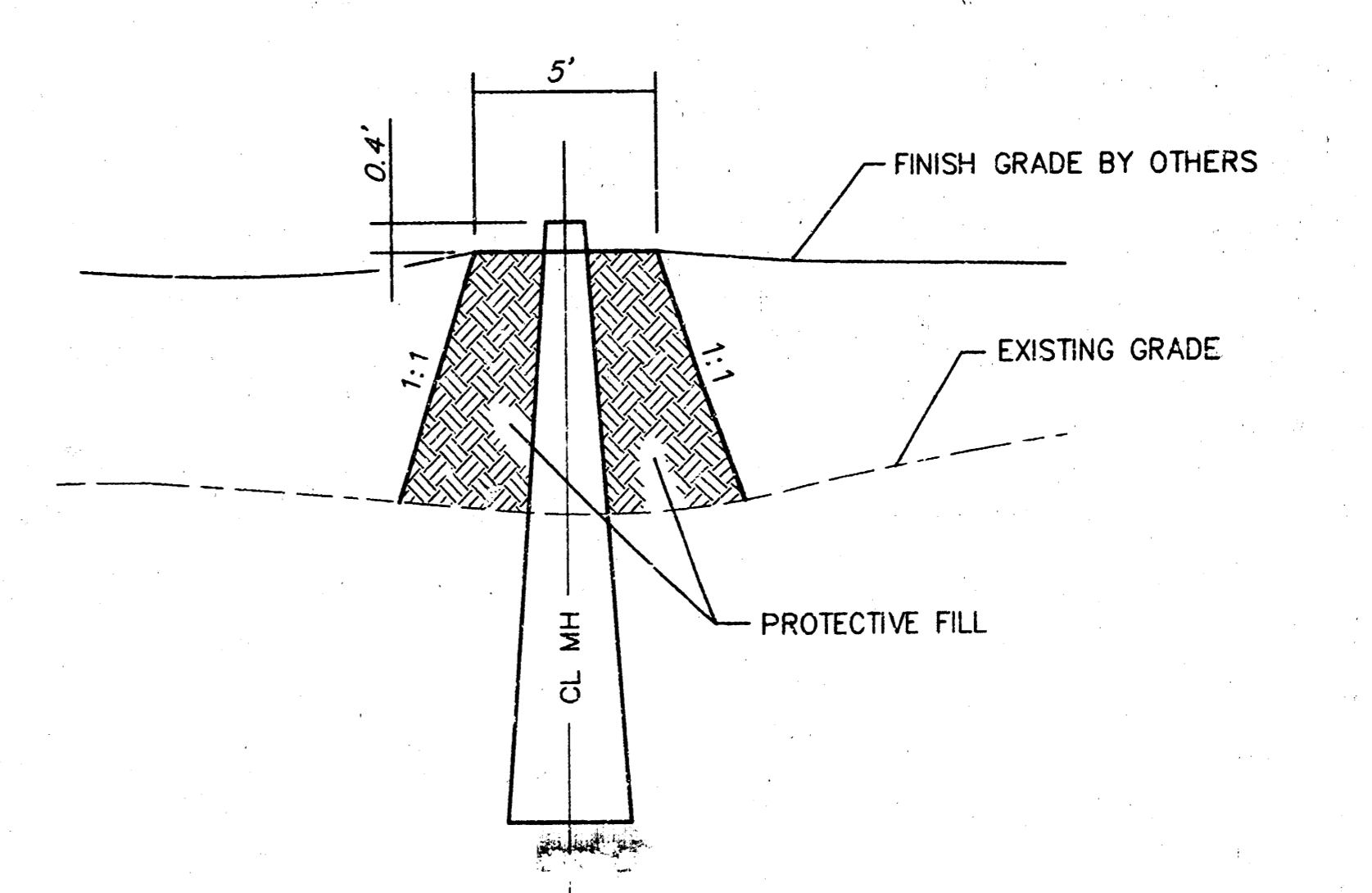


SECTION X (TYPICAL)

- GENERAL NOTES**
PRECAST MANHOLE NOTES
- ALL PRECAST CONCRETE MANHOLE SECTIONS SHALL CONFORM TO THE LATEST REVISIONS OF A.S.T.M. C478 AS MODIFIED BY THE SPECIFICATIONS.
 - NON-SHRINK GROUT SHALL BE NON-METALLIC TYPE.
 - APPROVED FLEXIBLE WATERSTOP GASKETS SHALL BE INSTALLED TO JOIN THE SEWER TO THE MANHOLE WALL WHEN A.B.S. COMPOSITE PIPE OR P.V.C. PIPE IS USED. FOR OTHER TYPES OF PIPE THE SEWER SHALL BE GROUTED IN PLACE WITH NON-SHRINK GROUT. THE SEWER PIPE SHALL BE SUPPORTED WITH CONCRETE ENCASEMENT A MINIMUM OF 3 FEET FROM THE MANHOLE WALL AND TO THE FIRST JOINT FOR V.C.P. SUCH THAT THE JOINT REMAINS FLEXIBLE.
 - ALL INSIDE SURFACES OF THE CONCRETE MANHOLE WHICH WOULD BE EXPOSED TO SEWER GAS SHALL BE COATED WITH 2 COATS TNEC SERIES 66 HI-BUILD EPOXOLINE, DRY THICKNESS OF 8 MILS (MIN.).
 - EXTERIOR MANHOLE WALLS SHALL BE COATED WITH 1 COAT MOBILARMA 633 BITUMINOUS COATING.
 - JOINT SEALING COMPOUND SHALL BE KENT SEAL NO. 2 OR APPROVED EQUAL.
 - PRECAST MANHOLES SHALL BE SET AT LEAST 4 INCHES INTO THE MANHOLE BASE.
 - TOP OF MANHOLE FLOOR SLAB SHALL BE AT LEAST 3 INCHES BELOW THE FLOW LINE OF THE OUTLET PIPE TO INSURE SUFFICIENT MINIMUM THICKNESS OF SHAPED INVERT.
 - LIFTING HOLES SHALL BE FILLED WITH NON-SHRINK GROUT AND THE INTERIOR SURFACE COATED AS SPECIFIED.
 - MORTAR USED IN MASONRY CONSTRUCTION SHALL CONTAIN 8 SACKS OF CEMENT PER CUBIC YARD. CONCRETE USED IN MANHOLE BASES SHALL CONFORM TO THE REQUIREMENTS OF CONCRETE FOR CONCRETE PAVEMENT CONSTRUCTION AS SPECIFIED IN THE CITY STANDARD PAVING SPECIFICATIONS USING CITY CONCRETE PAVEMENT MIX WITHOUT AIR ENTRAINING ADMIXTURE. MORTAR SHALL BE PLACED AROUND THE MANHOLE RINGS AS SHOWN ON THE DRAWINGS WHEN MANHOLES ARE CONSTRUCTED IN UNPAVED AREAS. MANHOLES CONSTRUCTED WHERE PIPE SIZES ARE SMALLER THAN 24" SHALL HAVE AN INSIDE DIAMETER OF 4". MANHOLES CONSTRUCTED WHERE PIPE SIZES ARE 24" OR LARGER SHALL HAVE AN INSIDE DIAMETER OF 5". COMPLETED MANHOLE SHALL BE WITHOUT LEAKS AND WATER TIGHT.

- REINFORCING STEEL SHALL BE INSTALLED IN THE MANHOLE BASES AND SHALL CONSIST OF NO. 4 BARS PLACED ON 6" CENTERS IN BOTH DIRECTIONS. THE MANHOLE BASE REINFORCEMENT SHALL BE PLACED AT LEAST 3" ABOVE THE BOTTOM OF THE MANHOLE BASE. ALL COSTS FOR FURNISHING AND INSTALLING REINFORCING STEEL SHALL BE INCLUDED IN THE UNIT PRICE BID FOR THE MANHOLE.
- OPENINGS SHALL BE CUT INTO THE MANHOLE WALL WHEN OUTSIDE DROPS ARE CONSTRUCTED ON EXISTING MANHOLES. OPENINGS CUT INTO EXISTING MANHOLES SHALL BE AS SMALL AS PRACTICAL TO FACILITATE INSTALLING AND GROUTING THE NEW PIPE IN PLACE. WATERSTOP GASKETS SHALL BE USED WITH P.V.C. AND A.B.S. COMPOSITE PIPE. THE NEW PIPE SHALL BE GROUTED INTO THE OPENING USING AN APPROVED NONSHRINK GROUT FOR THE FULL MANHOLE WALL THICKNESS. THE EXTERIOR OF THE COMPLETED CONNECTION SHALL BE SEALED WITH AN APPROVED BITUMINOUS COATING SUCH THAT THE CONNECTION WILL BE WATER TIGHT. FLOOR OF MANHOLE SHALL BE MODIFIED TO FORM NEW FLOW CHANNEL FOR THE NEW CONNECTION AS INDICATED BY THE DRAWING. THIS WORK, INCLUDING MODIFICATION OF MANHOLE FLOOR, SHALL BE PAID FOR AT THE UNIT PRICE BID FOR OUTSIDE DROP STACK CONSTRUCTED ON EXISTING MANHOLE.
- THE FLOORS OF ALL MANHOLES SHALL BE SHAPED WITH FLOW CHANNELS SUCH THAT THE MANHOLES WILL BE SELF-CLEANING AND FREE OF AREAS WHERE SOLIDS COULD BE DEPOSITED AS SEWAGE FLOWS THROUGH THE MANHOLE FROM ALL INLET PIPES TO THE OUTLET PIPE. FLOW CHANNELS SHALL BE FORMED TO MATCH THE BOTTOM HALVES OF THE INFLOWING PIPES AND THE OUTFLOWING PIPE AS SHOWN BY THE DRAWINGS EXCEPT FOR INSIDE DROP MANHOLES. FLOW CHANNELS FOR INSIDE DROP MANHOLES SHALL BE CONSTRUCTED AS INDICATED BY THE DRAWING. MANHOLE FLOORS SHALL HAVE SLOPES OF 3 INCHES PER FOOT IN THE AREAS OUTSIDE OF THE FLOW CHANNELS SLOPED TOWARD THE FLOW CHANNELS. PIPES LAID THROUGH MANHOLES SHALL HAVE THE TOP HALF REMOVED TO NEAT LINES FOR THE FULL INSIDE DIAMETER OF THE MANHOLE. MANHOLE FLOORS SHALL THEN BE SHAPED AROUND THE BOTTOM HALF OF THE PIPE WHICH FORMS THE FLOW CHANNEL.
- PIPES INSTALLED WITHIN THE EXCAVATION MADE FOR THE MANHOLE SHALL BE CRADLED WITH CONCRETE TO THE LIMITS OF THE MANHOLE EXCAVATION. WHEN CLAY PIPE IS USED, THE CRADLE SHALL EXTEND TO THE FIRST JOINT OUTSIDE THE MANHOLE. THE CRADLE SHALL BE TERMINATED AT THE CLAY PIPE JOINT IN A MANNER WHICH WILL MAINTAIN THE FLEXIBILITY OF THE JOINT. COST OF CRADLE WITHIN MANHOLE EXCAVATION OR TO CLAY PIPE JOINTS ADJACENT TO MANHOLE SHALL BE INCLUDED IN THE UNIT PRICE BID FOR THE MANHOLE.

- MANHOLE COVER CASTINGS AND MANHOLE FRAME CASTINGS SHALL CONFORM TO THE REQUIREMENTS AS INDICATED IN THE STANDARD SPECIFICATIONS AND AS SHOWN IN THE STANDARD DETAIL DRAWING.
- THE VERTICAL DROP IN INSIDE DROP MANHOLES SHALL NOT EXCEED 2' FOR INFLOWING PIPES SIZED 12" OR SMALLER AND 2' FOR INFLOWING PIPES LARGER THAN 12". THE CROWNS OF INFLOWING PIPES SHALL NEVER BE SET LOWER THAN THE CROWN OF THE OUTFLOWING PIPE.
- STANDARD MANHOLES AND STANDARD INSIDE DROP MANHOLES SHALL BE BID AS STANDARD MANHOLES FOR THE TYPE AND DIAMETER INDICATED. OUTSIDE DROP MANHOLES SHALL BE BID AS STANDARD OUTSIDE DROP MANHOLES FOR THE TYPE AND DIAMETER INDICATED. ALL MANHOLE DIAMETERS WILL BE 4' UNLESS INDICATED OTHERWISE.
- A BRICK MASONRY COLLAR SHALL BE INSTALLED BETWEEN THE CAST IRON FRAME AND THE CONCENTRIC CONE. THE COLLAR WILL HAVE 8" WALLS AND A VERTICAL HEIGHT OF 6" MINIMUM AND 18" MAXIMUM. A 1" COAT OF MORTAR WILL BE PLASTERED ON THE OUTSIDE OF THE COLLAR. THE USE OF PRE-CAST CONCRETE SPACERS FOR MANHOLE TOP ADJUSTMENT IS ALSO ALLOWED.
- ALL MANHOLE BASE CONSTRUCTION THAT OCCURS IN THE FIELD MUST HAVE A MINIMUM OF EIGHT INCHES OF CONCRETE BELOW THE MANHOLE WALL AND THE WALL SECTION SHOULD EXTEND FOUR INCHES INTO THE BASE RESULTING IN A MINIMUM TOTAL BASE THICKNESS OF 12 INCHES. MONOLITHIC BASE SECTIONS CONSTRUCTED IN THE FACTORY AND CURED AS PER ASTM C478 MUST HAVE A MINIMUM EIGHT INCH THICK CONCRETE BASE. BASE SECTIONS CONSTRUCTED IN THE FACTORY UTILIZING A PREVIOUSLY MANUFACTURED MANHOLE WALL SECTION, AS OUTLINED IN THE ABOVE PARAGRAPH, MUST HAVE A MINIMUM BASE THICKNESS OF EIGHT INCHES WITH THE WALL SECTION EXTENDING FOUR INCHES INTO THE BASE AND BE MANUFACTURED IN COMPLIANCE WITH ASTM C478.



PROTECTIVE FILL AT MANHOLE
NOT TO SCALE

MINIMUM PROTECTIVE FILL SHALL BE PROVIDED IN ALL INSTANCES WHERE MH TOP IS GREATER THAN 0.4' ABOVE EXISTING GROUND. (COST SUBSIDIARY TO MH INSTALLATION.) (TYPICAL ALL SHEETS.)

ABERDEEN 3RD ADDITION
TYPE "P" MANHOLE DETAILS
CITY OF WICHITA, KANSAS
MICHAEL E. UNDERBARK, P.E. CITY ENGINEER
Prof. No. 448-88402 OC-17 744858

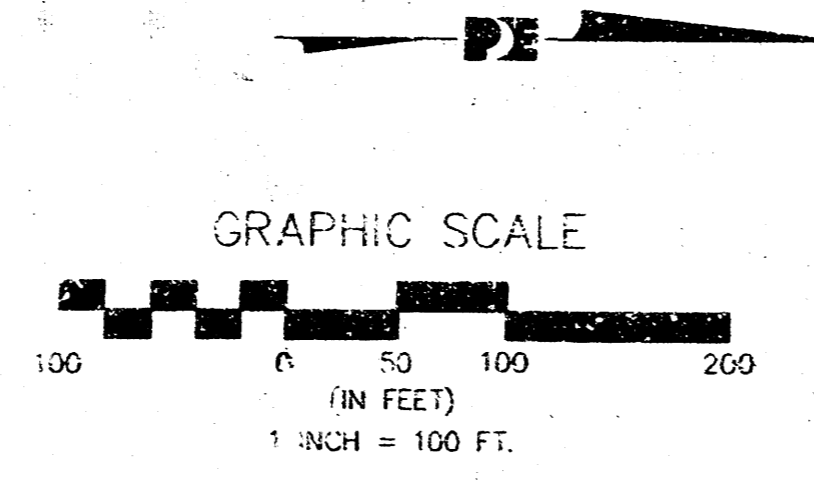
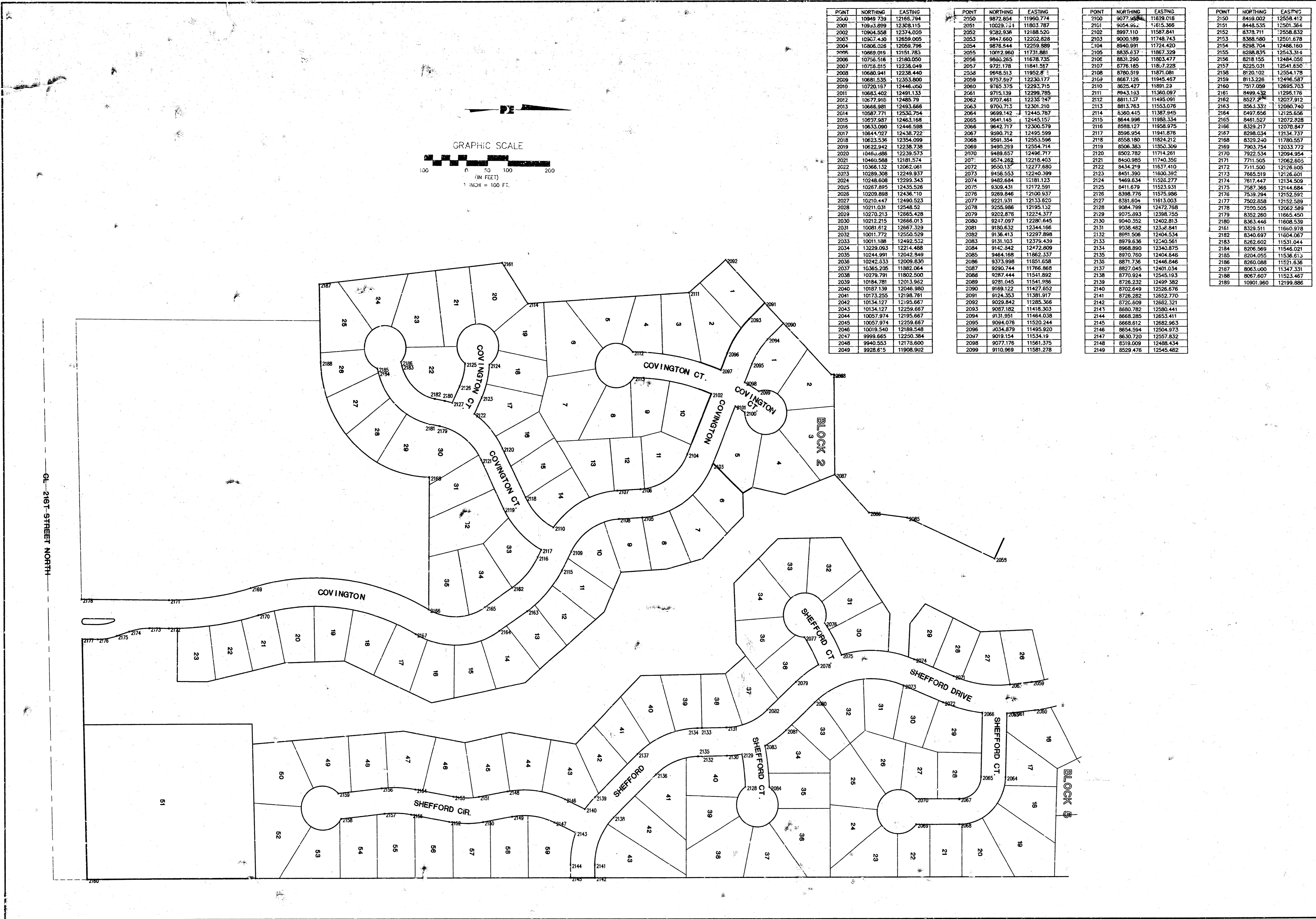
POE & ASSOCIATES OF KANSAS, INC.
1001 S. W. 10TH ST., SUITE 200, WICHITA, KS 67202-1114 TEL: 374-6600 FAX: 374-6601

FINAL

Engineer: J. Libert / J. Dickman
Drawn By: M. Perez
Poe Job No.: 056A
Date: February, 2000

Sheet
5 of 9

G:\APPS\DATA\EGS\base.dwg Wed May 17 13:18:38 2000 Jason Dickman - Poe & Associates of Kansas, Inc.



POINT	NORTHING	EASTING
2000	10949.739	12166.794
2001	10943.899	12308.115
2002	10944.558	12374.020
2003	10937.430	12659.005
2004	10806.028	12058.796
2005	10869.016	12151.783
2006	10756.518	12180.050
2007	10755.815	12238.049
2008	10680.941	12238.440
2009	10681.535	12353.800
2010	10720.197	12446.000
2011	10683.402	12481.133
2012	10677.910	12485.79
2013	10665.981	12493.666
2014	10587.771	12532.754
2015	10697.987	12463.168
2016	10633.090	12446.598
2017	10644.727	12438.722
2018	10623.536	12354.099
2019	10622.942	12238.738
2020	10464.886	12239.573
2021	10460.588	12181.574
2022	10366.132	12082.981
2023	10289.308	12249.937
2024	10248.608	12299.343
2025	10267.895	12335.526
2026	10209.888	12436.110
2027	10210.447	12490.523
2028	10211.031	12548.52
2029	10212.213	12605.428
2030	10212.210	12666.013
2031	10081.612	12667.329
2032	10011.772	12550.529
2033	10011.188	12492.532
2034	10229.063	12214.468
2035	10244.991	12042.849
2036	10242.533	12009.830
2037	10365.205	11982.064
2038	10279.791	11802.500
2039	10184.781	12013.962
2040	10187.139	12046.980
2041	10173.255	12198.781
2042	10134.127	12195.667
2043	10134.127	12259.667
2044	10057.974	12195.667
2045	10057.974	12259.667
2046	10019.540	12189.548
2047	9999.665	12250.384
2048	9940.553	12173.600
2049	9928.615	11908.902

POINT	NORTHING	EASTING
2050	9872.654	11960.774
2051	10029.721	11803.787
2052	9780.938	12168.520
2053	9847.650	12202.828
2054	9878.544	12259.889
2055	10012.960	11731.981
2056	9860.253	11678.735
2057	9721.178	11841.517
2058	9648.513	11952.81
2059	9757.597	12230.177
2060	9785.375	12293.715
2061	9715.139	12298.785
2062	9707.461	12235.247
2063	9700.715	12301.310
2064	9699.142	12443.787
2065	9641.145	12443.157
2066	9642.717	12300.579
2067	9590.712	12495.599
2068	9591.354	12553.596
2069	9480.293	12554.714
2070	9489.657	12496.717
2071	9574.262	12218.453
2072	9550.137	12277.680
2073	9458.553	12240.399
2074	9489.884	12181.123
2075	9339.431	11717.591
2076	9269.846	11700.837
2077	9221.931	12133.620
2078	9256.986	12195.132
2079	9202.878	12234.377
2080	9217.097	12286.645
2081	9180.632	12344.166
2082	9136.413	12297.898
2083	9131.103	12376.439
2084	9145.842	12472.809
2085	9464.168	11862.337
2086	9375.998	11851.658
2087	9296.744	11786.868
2088	9287.444	11541.892
2089	9281.045	11541.986
2090	9189.122	11427.652
2091	9174.353	11381.917
2092	9029.842	11285.366
2093	9087.182	11418.303
2094	9131.951	11464.038
2095	9094.078	11520.244
2096	9034.879	11495.920
2097	9019.154	11534.19
2098	9077.176	11581.375
2099	9110.969	11581.278

POINT	NORTHING	EASTING
2100	9077.984	11629.018
2101	9054.952	11615.366
2102	8997.110	11587.841
2103	9000.189	11748.743
2104	8940.991	11724.420
2105	8835.637	11867.329
2106	8831.290	11903.477
2107	8776.185	1187.225
2108	8780.519	11871.081
2109	8687.125	11945.457
2110	8525.427	11891.23
2111	8943.133	11360.097
2112	8811.137	11495.091
2113	8813.763	11553.076
2114	8360.445	11387.945
2115	8644.998	11983.334
2116	8598.127	11958.975
2117	8596.954	11941.876
2118	8558.190	11924.212
2119	8506.383	11350.309
2120	8502.782	11714.261
2121	8450.985	11743.358
2122	8434.219	11637.410
2123	8451.390	11600.392
2124	8469.634	11526.277
2125	8411.679	11533.531
2126	8388.778	11575.888
2127	8381.604	11613.003
2128	8084.799	12472.768
2129	8075.893	12398.785
2130	8040.352	12402.813
2131	8038.482	12348.841
2132	8091.506	12404.534
2133	8079.636	12403.561
2134	8068.890	12340.875
2135	8070.760	12404.848
2136	8071.736	12446.846
2137	8027.045	12401.034
2138	8770.924	12545.193
2139	8726.232	12499.382
2140	8702.649	12526.676
2141	8726.282	12652.770
2142	8726.609	12682.321
2143	8680.782	12380.441
2144	8668.285	12653.411
2145	8668.612	12682.963
2146	8654.594	12504.973
2147	8630.720	12557.832
2148	8519.009	12488.434
2149	8529.476	12545.482

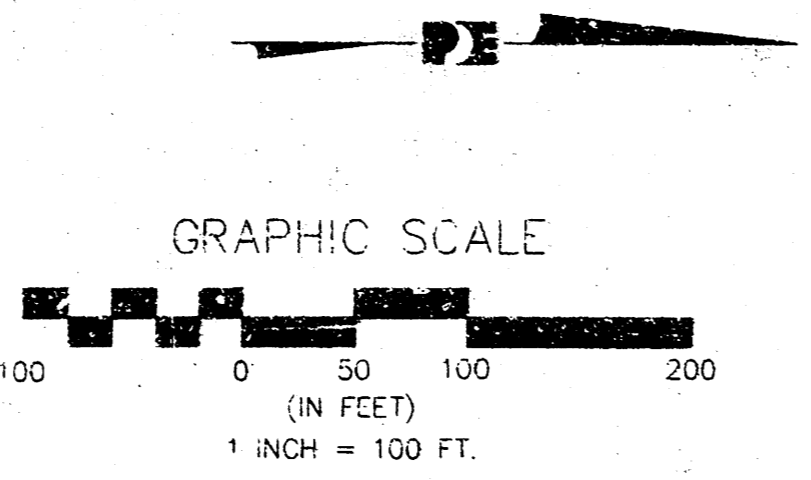
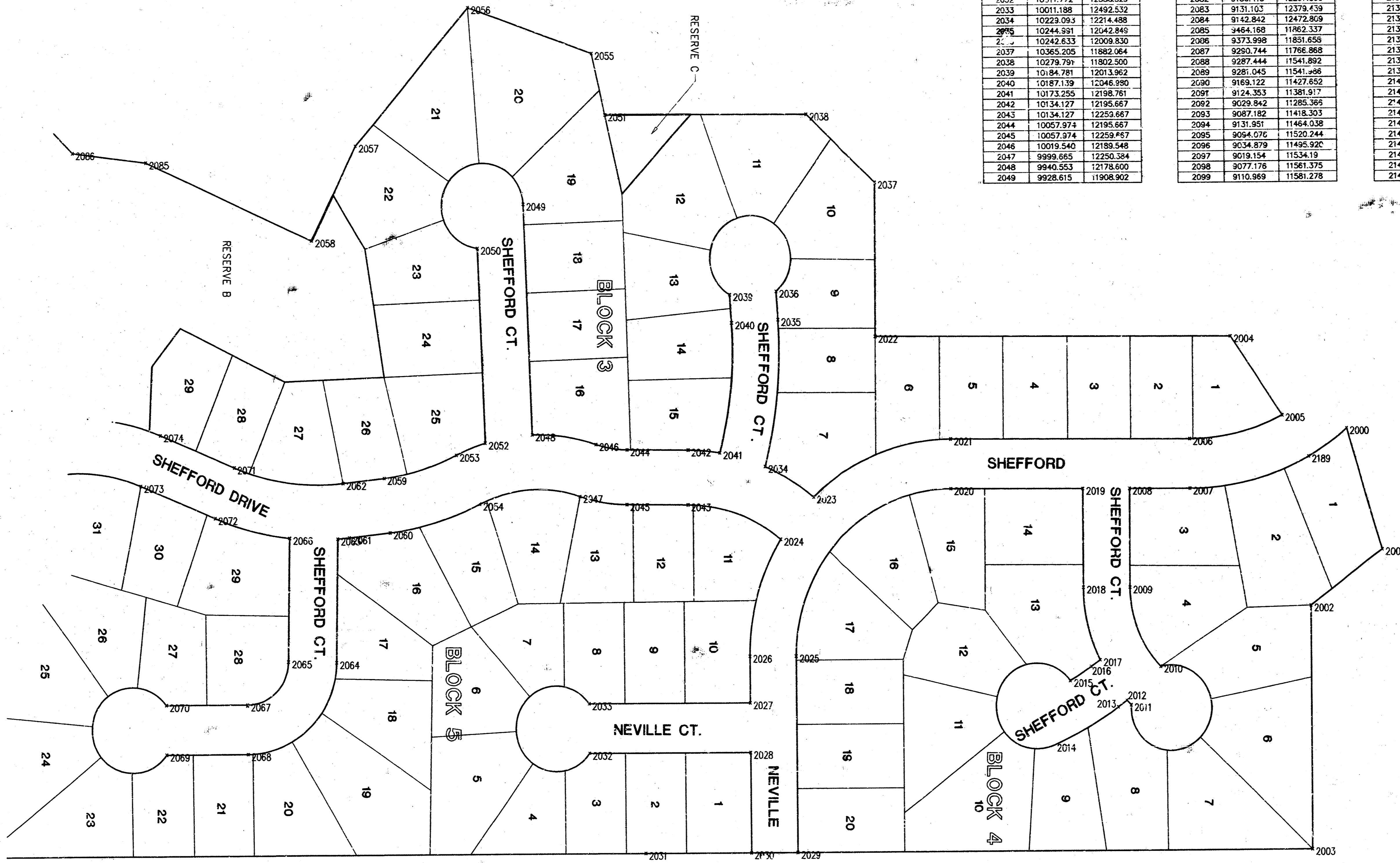
POINT	NORTHING	EASTING
2150	8449.002	12658.412
2151	8448.535	12501.364
2152	8378.711	12558.832
2153	8388.580	12501.678
2154	8298.704	12486.160
2155	8298.835	12543.314
2156	8318.155	12484.058
2157	8225.031	12541.650
2158	8120.102	12554.178
2159	8113.226	12496.587
2160	7817.059	12695.703
2161	8499.432	11296.176
2162	8527.274	12027.912
2163	8563.337	12080.740
2164	8497.656	12125.656
2165	8461.527	12072.828
2166	8329.217	12076.847
2167	8298.034	12134.737
2168	8329.240	11780.557
2169	7903.754	12033.772
2170	7922.534	12094.954
2171	7711.505	12062.605
2172	7711.506	12126.605
2173	7665.519	12126.601
2174	7617.447	12134.509
2175	7587.365	12144.884
2176	7539.294	12152.592
2177	7502.858	12152.589
2178	7500.505	12162.589
2179	8352.260	11665.450
2180	8363.446	11608.538
2181	8329.511	11660.978
2182	8340.697	11604.067
2183	8282.602	11531.044
2184	8298.969	11546.021
2185	8204.055	11536.613
2186	8260.088	11521.636
2187	8063.000	11547.331
2188	8067.607	11523.487
2189	10901.960	12199.886

ABERDEEN 3RD ADDITION
 COORDINATE POINTS LIST
 CITY OF WICHITA, KANSAS
 MICHAEL E. LINDBERGH, P.E. - CITY ENGINEER
 Proj. No. 468-03004 OCAF 74.93.33

FINAL

Designed By: J. Libert / J. Dickman
 Drawn By: M. Perez / J. Dickman
 Print Job No.: 16556A
 Date: March, 2000

6 of 9



POINT	NORTHING	EASTING	POINT	NORTHING	EASTING	POINT	NORTHING	EASTING	POINT	NORTHING	EASTING
2000	10949.7398	12166.794	2050	9872.854	11960.774	2100	8077.952	11629.018	2150	8459.002	12558.412
2001	10933.896	12396.155	2051	11029.754	11803.787	2101	8054.992	11615.368	2151	8448.535	12551.354
2002	10904.508	12374.020	2052	10829.336	12188.520	2102	8097.110	11581.841	2152	8378.711	12558.832
2003	10907.430	12638.005	2053	9847.680	12202.828	2103	8006.189	11748.743	2153	8388.530	12501.678
2004	10800.028	12059.796	2054	9876.844	12259.589	2104	8040.991	11724.420	2154	8298.704	12348.160
2005	10899.719	12151.783	2055	10073.960	11731.581	2105	8053.637	11687.329	2155	8288.835	12547.314
2006	10756.515	12180.050	2056	9860.268	11678.735	2106	8031.290	11803.477	2156	8218.175	12484.059
2007	10756.815	12238.049	2057	9721.178	11841.517	2107	8774.185	11807.228	2157	8225.031	12541.650
2008	10680.941	12238.440	2058	9668.513	11952.816	2108	8780.519	11871.081	2158	8120.102	12554.178
2009	10681.535	12353.800	2059	9757.697	12231.177	2109	8657.119	11945.457	2159	8113.228	12446.587
2010	10720.197	12446.050	2060	9785.375	12293.715	2110	8625.427	11891.29	2160	7517.059	12865.703
2011	10883.402	12481.133	2061	9715.139	12299.785	2111	8443.193	11360.097	2161	8499.432	11296.176
2012	10677.918	12485.79	2062	9707.461	12238.247	2112	8811.137	11485.091	2162	8527.203	12027.912
2013	10666.961	12493.966	2063	9700.713	12301.210	2113	8813.753	11551.076	2163	8563.332	12083.740
2014	10587.771	12530.924	2064	9690.142	12445.787	2114	8560.445	11307.945	2164	8497.656	12125.656
2015	10607.987	12467.88	2065	9641.145	12445.157	2115	8644.998	11968.324	2165	8461.527	12072.828
2016	10633.090	12446.598	2066	9642.717	12300.579	2116	8593.127	11958.975	2166	8329.217	12078.447
2017	10644.027	12438.722	2067	9590.712	12485.599	2117	8598.854	11941.876	2167	8290.034	12134.737
2018	10623.556	12354.099	2068	9597.354	12533.566	2118	8558.180	11824.212	2168	8328.240	11780.557
2019	10622.942	12233.738	2069	9490.299	12554.714	2119	8508.383	11830.309	2169	7903.754	12033.772
2020	10460.886	12239.573	2070	9499.657	12496.717	2120	8502.782	11714.281	2170	7922.534	12094.954
2021	13460.588	12181.574	2071	9574.262	12218.403	2121	8450.985	11740.359	2171	7711.505	12062.605
2022	10366.132	12082.061	2072	9550.131	12277.680	2122	8434.219	11637.410	2172	7711.500	12128.605
2023	10289.308	12249.877	2073	9458.553	12240.399	2123	8451.390	11800.392	2173	7665.519	12128.601
2024	10243.608	12299.343	2074	9462.884	12181.123	2124	8469.634	11529.777	2174	7674.443	12134.509
2025	10267.895	12435.526	2075	9308.431	12172.591	2125	8411.679	11511.431	2175	7587.363	12144.684
2026	10209.888	12436.110	2076	9269.846	12100.637	2126	8398.776	11575.986	2176	7539.294	12152.592
2027	10210.447	12490.523	2077	9221.931	12133.523	2127	8381.604	11813.003	2177	7502.858	12152.599
2028	10211.031	12548.52	2078	9255.986	12185.132	2128	8064.799	12471.768	2178	7500.505	12062.599
2029	10270.213	12685.428	2079	9202.878	12234.177	2129	9075.893	13398.755	2179	8322.260	11665.450
2030	10212.215	12666.013	2080	9247.097	12280.645	2130	9040.352	12402.813	2180	8303.446	11608.539
2031	10087.612	12687.329	2081	9180.632	12344.166	2131	9038.452	12336.841	2181	8329.511	11660.378
2032	10011.772	12550.529	2082	9136.413	12277.898	2132	8961.506	12404.534	2182	8340.697	11604.667
2033	10011.189	12492.532	2083	9131.105	12379.439	2133	8978.636	12340.561	2183	8252.602	11531.044
2034	10223.093	12214.488	2084	9142.842	12472.808	2134	8968.890	12340.875	2184	8266.569	11546.021
2035	10244.891	12042.848	2085	9464.168	11862.337	2135	8970.760	12404.848	2185	8204.055	11536.813
2036	10242.833	12009.830	2086	9373.998	11851.658	2136	8971.736	12448.846	2186	8203.088	11521.636
2037	10365.205	11882.864	2087	9260.744	11866.868	2137	8927.045	12401.034	2187	8063.000	11347.331
2038	10279.791	11802.500	2088	9287.444	11541.892	2138	8770.924	12545.193	2188	8067.607	11523.467
2039	10184.781	12013.962	2089	9281.045	11541.896	2139	8726.232	12499.382	2189	10201.960	12199.888
2040	10187.139	12046.990	2090	9169.122	11427.652	2140	8702.849	12526.978			
2041	10173.255	12198.761	2091	9124.553	11381.917	2141	8726.282	12652.770			
2042	10134.127	12195.667	2092	9029.842	11285.365	2142	8726.609	12682.321			
2043	10134.127	12253.667	2093	9087.182	11418.303	2143	8880.782	12586.441			
2044	10057.974	12195.667	2094	9131.561	11464.038	2144	8668.285	12553.011			
2045	10057.974	12259.467	2095	9064.076	11520.244	2145	8958.612	12682.963			
2046	10019.540	12189.548	2096	9034.879	11495.920	2146	8654.594	12504.973			
2047	9999.665	12250.384	2097	9019.154	11534.119	2147	8630.720	12557.832			
2048	9940.553	12178.600	2098	9077.176	11581.375	2148	8519.009	12488.434			
2049	9928.615	11906.922	2099	9110.889	11581.278	2149	8529.476	12545.482			

FINAL

Designed By: J. Ubert / J. Dickman
 Drawn By: M. Perez / J. Dickman
 POC: J. Dickman / M. Perez
 Date: March 2000

POE & ASSOCIATES OF KANSAS, INC.

1111 W. 15th St., Suite 200, Topeka, KS 66604
 Phone: 785-863-1111 Fax: 785-863-1111

ABERDEEN 3RD ADDITION
COORDINATE POINTS LIST
CITY OF WICHITA, KANSAS
 MICHAEL E. UNDBAK, P.E. - CITY ENGINEER
 Proj. No. 488-BJ004 DC-47 743013

6: MAPS(D:\P\1656\Final.dwg Mon Mar 27 20:36:46 2000 Jim Libert - Poe & Associates of Kansas, Inc.

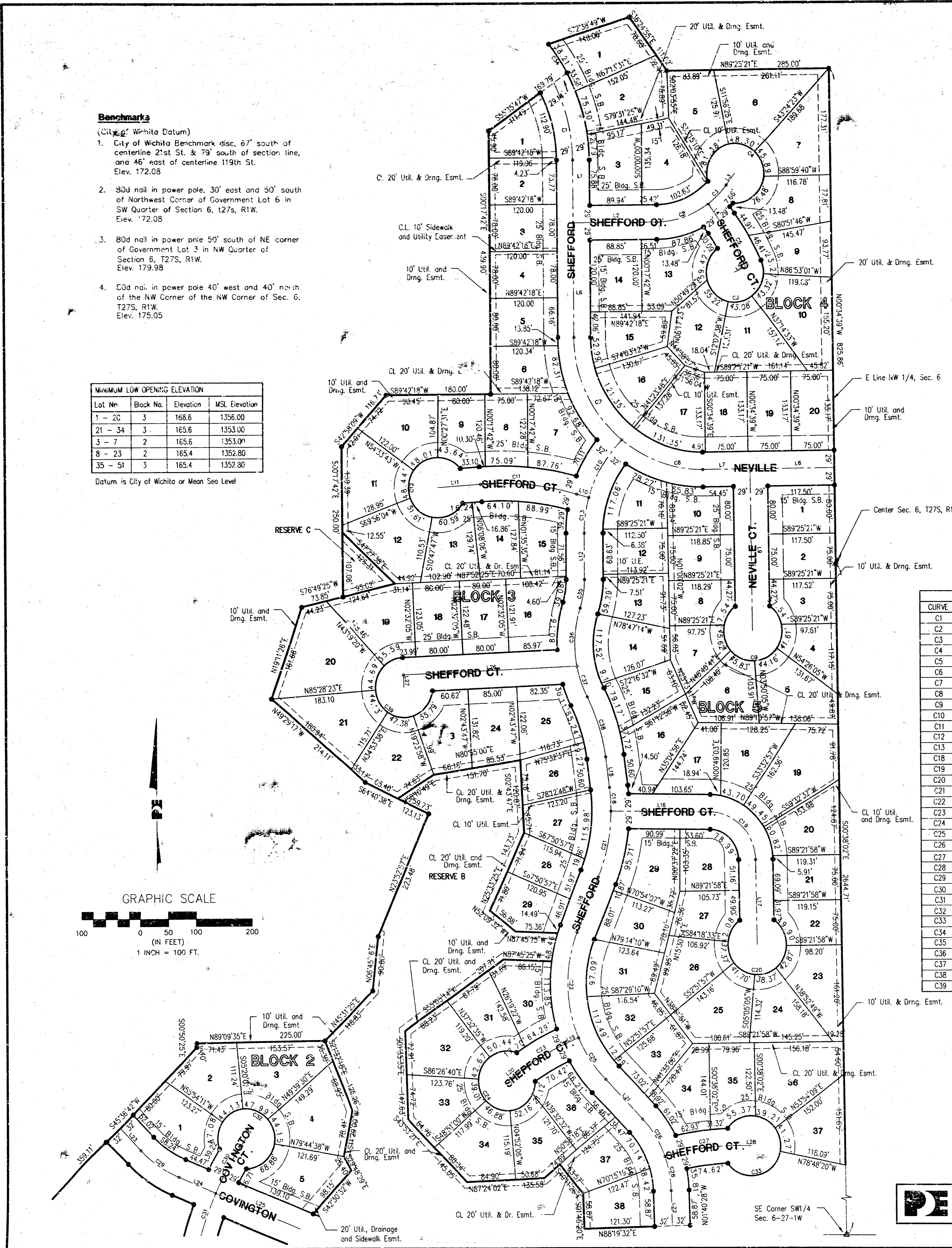
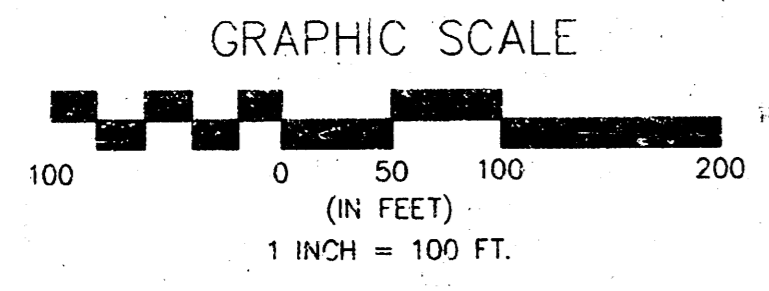
Benchmarks

(City of Wichita Datum)

- City of Wichita Benchmark disc, 6" south of centerline 21st St. & 79' south of section line, and 46' east of centerline 119th St. Elev. 172.03
- 80d nail in power pole, 30' east and 50' south of Northwest Corner of Government Lot 6 in SW Quarter of Section 6, T27S, R1W. Elev. 173.38
- 80d nail in power pole 50' south of NE corner of Government Lot 3 in NW Quarter of Section 6, T27S, R1W. Elev. 173.98
- 80d nail in power pole 40' west and 40' north of the NW Corner of the NW Corner of Sec. 6, T27S, R1W. Elev. 175.05

Lot No.	Block No.	Elevation	MSL Elevation
1 - 20	3	168.6	1356.00
21 - 34	3	165.6	1353.00
3 - 7	2	165.6	1353.00
8 - 23	2	165.4	1352.80
35 - 51	3	165.4	1352.80

Datum is City of Wichita or Mean Sea Level



LINE	LENGTH	BEARING
L1	104.86	N00°17'42"W
L2	144.36	N89°42'18"W
L3	24.87	S38°04'04"W
L4	40.24	S35°45'20"W
L5	21.00	S67°27'23"W
L6	191.06	N09°17'42"W
L7	83.42	S89°25'21"W
L8	148.50	S89°25'21"W
L9	269.00	N00°34'39"W
L10	21.74	S74°24'39"W
L11	73.83	S85°54'55"W
L12	76.15	S00°00'00"W
L15	50.60	S06°53'24"E
L16	175.37	S89°25'21"W
L17	141.79	N00°38'02"W
L18	269.00	S22°02'03"W
L19	26.05	S57°08'14"W
L20	41.44	N55°42'05"E
L21	91.94	S43°42'10"E
L22	58.87	S01°40'28"E
L23	52.02	S44°23'18"E
L24	71.02	S67°39'46"E
L25	176.02	S67°39'46"E
L26	324.02	S87°27'55"E
L27	21.00	S02°32'05"E
L28	8.69	S88°30'52"E

CURVE	LENGTH	RADIUS	TANGENT	CHORD	BEARING	DELTA
C1	134.41	272.00	68.61	133.04	N14°27'04"W	281°45'
C2	98.02	160.00	51.16	97.45	N71°58'29"E	352°38'
C3	451.17	160.00	22.74	45.02	N40°22'22"E	161°35'
C4	252.05	50.00	35.72	58.19	N50°46'47"W	288°49'42"
C5	85.14	399.43	42.73	84.97	N29°38'58"W	121°24'
C6	224.30	50.00	62.82	78.24	S75°01'36"E	257°02'01"
C7	196.64	223.00	105.23	190.33	N25°33'24"W	50°31'23"
C8	154.75	223.00	80.64	151.66	S70°41'52"E	394°53'
C9	252.29	50.00	35.60	58.00	N89°25'21"E	289°05'56"
C10	112.72	272.00	57.69	111.49	S30°39'20"W	294°31'
C11	171.69	500.00	85.70	170.84	N84°14'52"W	194°42'
C12	252.29	50.00	35.60	58.00	N04°05'05"W	289°05'56"
C13	59.72	17.00	30.05	59.54	S07°53'05"W	154°10'
C18	39.34	300.00	19.70	39.31	N03°08'01"W	07°30'46"
C19	123.91	80.00	78.26	111.89	N45°00'20"W	88°44'36"
C20	252.29	50.00	35.60	58.00	N89°21'58"E	289°05'56"
C21	112.72	300.00	57.03	112.06	N11°23'13"E	21°41'41"
C22	180.70	230.00	95.30	176.06	S09°21'21"E	45°04'48"
C23	79.84	400.00	40.65	79.70	S61°25'10"W	11°26'09"
C24	252.29	50.00	35.60	58.00	S34°17'52"E	289°05'56"
C25	83.66	230.00	42.30	83.20	S33°58'58"E	205°24'
C26	73.71	180.00	37.35	73.20	N31°58'17"W	232°46'
C27	146.61	500.00	73.84	146.09	N83°05'07"E	16°48'03"
C28	58.33	180.00	29.42	58.07	N10°57'26"W	18°33'56"
C29	81.24	700.00	41.19	80.69	S56°01'32"E	231°28'
C30	105.81	520.00	53.09	105.63	S33°35'01"W	11°39'31"
C31	73.11	500.00	139.78	269.88	S10°12'29"W	30°05'33"
C32	252.23	50.00	35.64	58.04	N55°05'57"W	289°02'10"
C33	252.23	50.00	35.64	58.04	N00°02'24"E	289°02'14"
C34	58.21	301.00	23.20	58.12	S34°42'27"E	11°04'48"
C35	49.18	155.76	24.80	49.98	N09°02'46"E	18°05'32"
C36	97.74	193.14	49.94	96.70	S03°35'39"W	28°24'45"
C37	54.02	193.14	27.19	53.84	S18°54'58"E	16°01'29"
C38	105.70	332.23	53.40	105.16	N16°54'33"W	20°02'18"
C39	227.58	50.00	58.76	76.16	S42°55'02"E	260°47'35"

STATE OF KANSAS, COUNTY OF SEDGWICK: ss.

I, Kenny E. Hill, being a duly licensed Land Surveyor in said County and State, do hereby certify that I have been in responsible charge of surveying and platting "ABERDEEN 3RD ADDITION" to Wichita, Kansas, located in the West Half of Section 6, Township 27 South, Range 1 West of the 6th P.M. Sedgewick County, Kansas, being described as follows:

Beginning at the Southeast Corner of the Southwest Quarter of Section 6, Township 27 South, Range 1 West of the 6th P.M. Sedgewick County, Kansas, thence North along the East line of the Southwest Quarter of said Section 6 on an assumed bearing of N00°38'02"W for a distance of 254.47 feet to the Center of said Section 6; thence N00°34'39"W on the West line of the Northwest Quarter of said Section 6 for a distance of 825.86 feet to the Southeast corner of Lot 43, Block 1, Aberdeen Second Addition; thence S89°25'21"W for a distance of 285.00 feet along the southerly line of Aberdeen Second Addition; thence N36°24'55"W for a distance of 111.02 feet; thence S72°38'49"W for a distance of 148.06 feet; thence southeasterly on a circular curve having a radius of 301.00 feet and a central angle of 11°04'48", being north of a 58.12 foot chord bearing S34°42'27"E for an arc distance of 58.21 feet; thence S55°35'47"W for a distance of 165.79 feet; thence S00°17'42"E for a distance of 439.90 feet; thence S89°42'18"W for a distance of 180.00 feet; thence S42°58'09"W for a distance of 73.85 feet; thence S10°17'42"E for a distance of 161.68 feet; thence S49°29'17"E for a distance of 214.11 feet; thence S64°40'38"E for a distance of 123.13 feet; thence S23°52'57"W for a distance of 223.48 feet; thence S06°45'16"W for a distance of 90.80 feet; thence S45°31'25"W for a distance of 118.83 feet; thence S89°09'35"W for a distance of 225.00 feet; thence S00°50'25"E for a distance of 6.40 feet; thence S45°36'42"W for a distance of 359.11 feet; thence S40°46'36"E for a distance of 114.42 feet; thence S04°09'41"E for a distance of 383.76 feet; thence S56°22'55"W for a distance of 110.20 feet; thence S06°41'07"E for a distance of 439.42 feet; thence N88°30'08"E for a distance of 82.54 feet; to the Northwest corner of Evangeli Assembly of God Addition; thence N88°30'08"E for a distance of 93.65 feet to a point of curve; thence on a circular curve to the left having a radius of 264.00 feet and a central angle of 88°00'22" for an arc distance of 405.50 feet; thence S89°59'44"E for a distance of 298.20 feet; thence southerly on a circular curve having a radius of 545.00 feet and a central angle of 46°13'20", being West of a 427.84 foot chord bearing S06°02'52"W for an arc distance of 439.67 feet to a point of curve; thence on a reverse circular curve having a radius of 655.00 feet and a central angle of 17°04'04" for an arc distance of 195.12 feet; thence S00°01'16"W for a distance of 291.03 feet to a point on the South line of the Southwest Quarter of said Section 6; thence N88°30'08"E for a distance of 634.22 feet to the point of beginning, subject to road right-of-way. Previously dedicated easements or street right-of-way are hereby vacated by virtue of K.S.A. 12-512(b).

The accompanying plat is a true and correct exhibit of property surveyed.

Dated this ___ day of _____, 1999.

Kenny E. Hill, L.S. 984
Vice President

KNOW ALL MEN BY THESE PRESENTS:

That we, the undersigned, have caused the land described in the Surveyor's Certificate to be platted into lots, blocks, streets and reserves. The streets are hereby dedicated to and for the use of the public. Easements are hereby granted as indicated for the construction and maintenance of drainage, a wall and utilities. Utilities may cross the wall easement. Reserve A shall permit entry monuments, lighting, landscaping, fences, walls, irrigation systems and utilities confined to easements. Reserve B and C shall permit ponds, drainage, irrigation systems, walks, recreation facilities, and utilities confined to easements. The reserves are to be owned and maintained by a property owners association its successors and assigns. All abutters' right of access to or from 21st Street North over and across the South line of Lot 51, Block 3 and Reserve B, except for one opening to Lot 51 are hereby granted to the City of Wichita. The minimum low opening elevation, for homes built on Lots 1 through 20, Block 3 shall be 168.6 City Datum (1356.00 MSL Datum), for homes built on Lots 21 through 34, Block 3 and Lots 3 through 7, Block 2 shall be 165.6 City Datum (1353.00 MSL Datum), and for homes built on Lots 8 through 23, Block 2 and Lots 35 through 51, Block 3 shall be 165.4 City Datum (1352.80 MSL Datum).

The Neville Family Trust III.

3AH-Inc.

Gregory Alan Neville, Trustee

Mathias Eck, President

Alvin Leon Neville, Trustee

Edward T. Neville, Trustee

Rita A. Neville, Trustee

STATE OF KANSAS, COUNTY OF SEDGWICK: ss.

This instrument was acknowledged before me on this ___ day of _____, 1999, by Mathias Eck, President of 3AH-Inc.

My Appointment Expires: _____

Notary Public

STATE OF KANSAS, COUNTY OF SEDGWICK: ss.

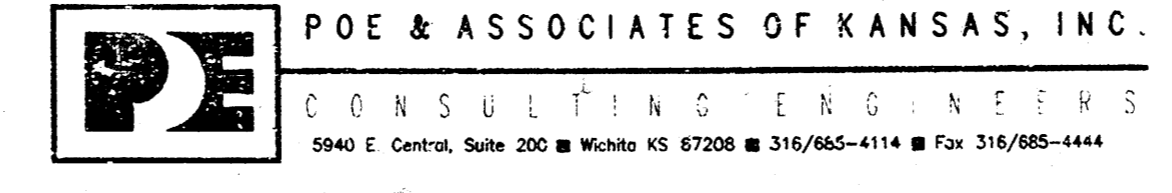
This instrument was acknowledged before me on this ___ day of _____, 1999, by Gregory Alan Neville, Alvin Leon Neville, Edward T. Neville and Rita A. Neville, Trustees of the Neville Family Trust III.

My Appointment Expires: _____

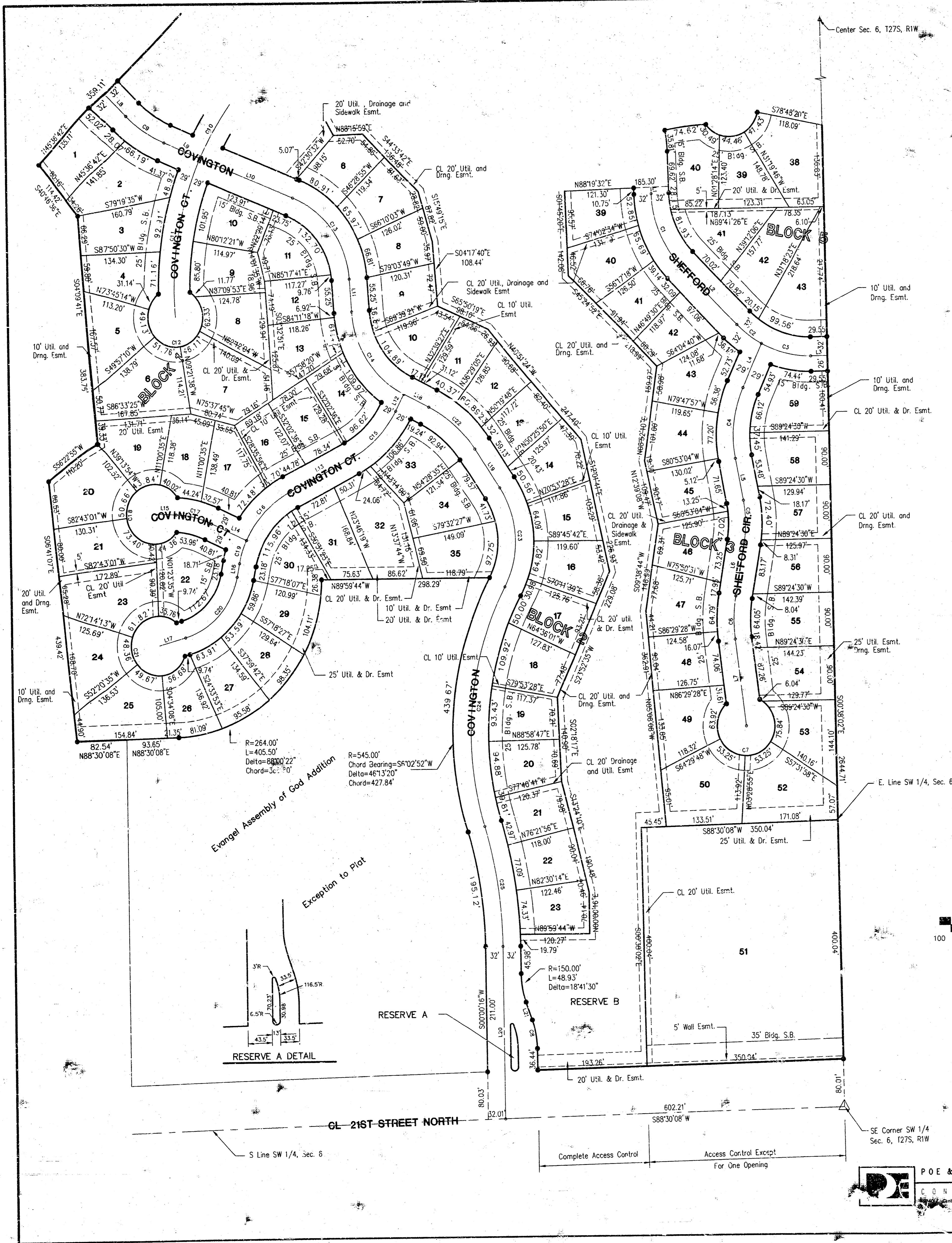
Notary Public

ABERDEEN 3RD ADDITION

TO WICHITA, SEDGWICK COUNTY, KANSAS



G:\UPPS\DLA\16565\Final.dwg Mon Mar 27 20:36:25 2000 Jim Libert - P&A Associates of Kansas, Inc.



LINE	LENGTH	BEARING
L1	10.75	S01°40'28\"W
L2	140.84	N44°42'28\"W
L3	29.55	N89°21'58\"E
L4	90.40	S24°19'22\"W
L5	71.65	N10°23'48\"W
L6	91.21	N05°47'47\"E
L7	146.41	N06°48'37\"W
L8	53.02	S44°23'18\"E
L9	71.02	S67°39'48\"E
L10	176.02	S67°39'48\"E
L11	55.25	N03°53'41\"W
L12	31.77	S27°18'20\"W
L13	123.12	S63°15'33\"W
L14	67.68	N65°06'52\"W
L15	39.12	S87°41'37\"E
L16	23.18	N11°07'13\"E
L17	50.47	S75°02'08\"W
L18	48.24	N62°41'40\"W
L19	79.57	S34°22'06\"E
L20	230.19	N00°00'16\"E
L21	31.76	N18°41'14\"W

CURVE	LENGTH	RADIUS	TANGENT	CHORD	BEARING	DELTA
C1	133.88	180.00	70.21	130.82	N22°38'58\"W	42°37'00\"
C2	53.44	180.00	26.92	53.25	N52°47'49\"W	17°00'42\"
C3	92.15	180.00	47.11	91.14	N75°38'06\"W	29°19'52\"
C4	121.14	200.00	62.49	119.29	S05°57'17\"W	34°42'10\"
C5	70.49	200.00	35.61	70.12	N00°18'00\"W	20°11'35\"
C6	72.45	250.00	36.48	72.20	N07°29'38\"E	16°38'19\"
C7	257.29	50.00	35.50	39.00	N83°11'28\"E	289°05'56\"
C8	48.53	150.00	24.59	48.72	N09°20'29\"W	18°41'30\"
C9	81.24	200.00	41.19	80.69	N56°01'32\"W	23°16'28\"
C10	105.81	520.00	53.09	105.63	S31°05'01\"W	11°39'31\"
C11	273.11	520.00	139.78	269.98	S10°12'29\"W	30°05'33\"
C12	252.23	50.00	35.64	58.04	N87°24'26\"E	289°02'10\"
C13	178.07	160.00	99.53	169.02	N35°46'44\"W	63°46'05\"
C14	174.61	170.00	95.88	167.03	N33°16'13\"W	58°50'34\"
C15	112.95	180.00	58.40	111.17	S45°16'56\"W	35°57'13\"
C16	113.88	170.00	59.16	111.74	S44°04'20\"E	38°22'25\"
C17	68.99	170.00	33.94	66.56	N76°24'14\"W	22°34'44\"
C18	252.28	50.00	35.60	58.00	S02°19'03\"W	289°05'43\"
C19	40.84	170.00	20.52	40.74	N18°02'10\"E	13°45'54\"
C20	145.02	130.00	81.10	137.62	S43°04'41\"W	63°54'54\"
C21	252.29	50.00	35.60	58.00	S14°57'52\"E	289°05'56\"
C22	108.76	220.00	55.52	107.86	S48°31'53\"E	289°19'34\"
C23	174.96	157.80	97.70	166.14	N02°36'17\"W	63°31'38\"
C24	413.85	513.00	288.83	402.72	S06°02'52\"W	46°13'21\"
C25	204.65	687.00	140.00	203.90	S08°31'46\"E	17°04'04\"

This plat of ABERDEEN 3RD ADDITION to Wichita, Kansas has been submitted to and approved by this WICHITA-SEDGWICK COUNTY METROPOLITAN AREA PLANNING COMMISSION, Wichita, Kansas.
Dated this _____ day of _____, 1999.

WICHITA SEDGWICK COUNTY METROPOLITAN AREA PLANNING COMMISSION

William M. Johnson, Chairman
Marvin S. Krout, Secretary

This plat approved and all dedications shown hereon accepted by the City Council of the City of Wichita, Kansas, this _____ day of _____, 1999.

Bob Knight, Mayor
Pat Burnett, City Clerk

Entered on transfer record this _____ day of _____, 1999.

James Alford, County Clerk

This is to certify that this instrument was filed for record in the Register of Deeds Office at _____ A.M.-P.M. on the _____ day of _____, 1999.

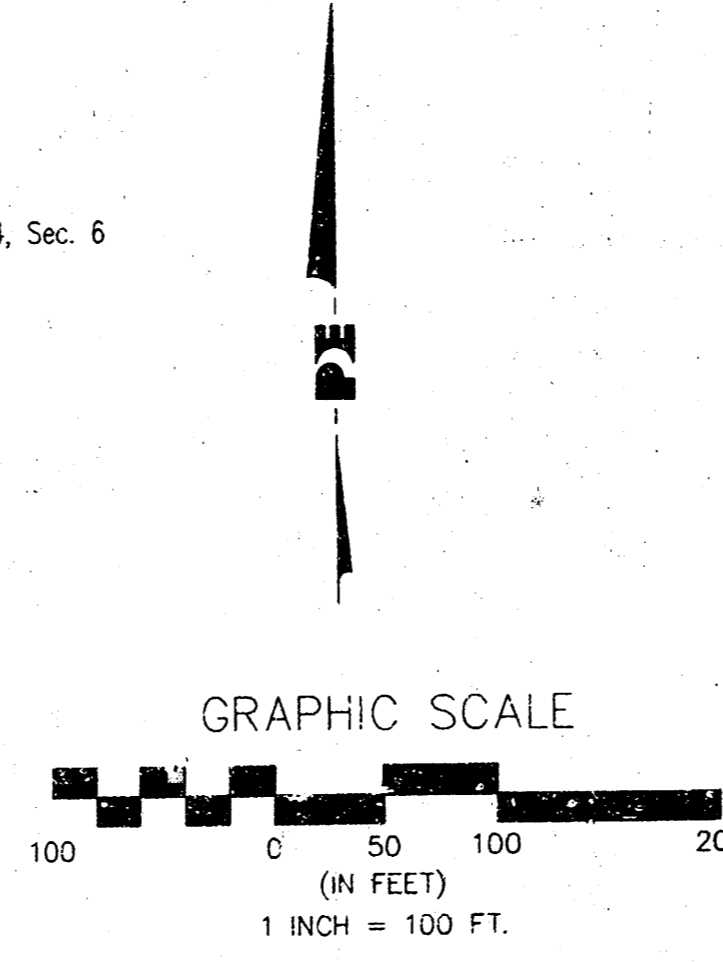
Bill Meek, Register of Deeds
Linda Kizzire, Deputy

Benchmarks

- (City of Wichita Datum)
1. City of Wichita Benchmark disc, 67' south of centerline 21st St. & 79' south of section line, and 46' east of centerline 119th St. Elev. 172.08
 2. 80d nail in power pole, 30' east and 50' south of Northwest Corner of Government Lot 6 in SW Quarter of Section 6, T27S, R1W. Elev. 172.08
 3. 80d nail in power pole 50' south of NE corner of Government Lot 3 in NW Quarter of Section 6, T27S, R1W. Elev. 179.98
 4. 80d nail in power pole 40' west and 40' north of the NW Corner of the NW Corner of Sec. 6, T27S, R1W. Elev. 175.05

Lot No.	Block No.	Elevation	MSL Elevation
1 - 20	3	168.6	1356.00
21 - 34	3	165.6	1353.00
3 - 7	2	165.6	1353.00
8 - 23	2	165.4	1352.80
35 - 51	3	165.4	1352.80

Datum is City of Wichita or Mean Sea Level



ABERDEEN 3RD ADDITION

TO WICHITA, SEDGWICK COUNTY, KANSAS

POE & ASSOCIATES OF KANSAS, INC.
CONSULTING ENGINEERS
1000 Central Exp. Hwy. Suite 200 Wichita, KS 67208 • Tel: 316/855-4114 • Fax: 316/855-4444