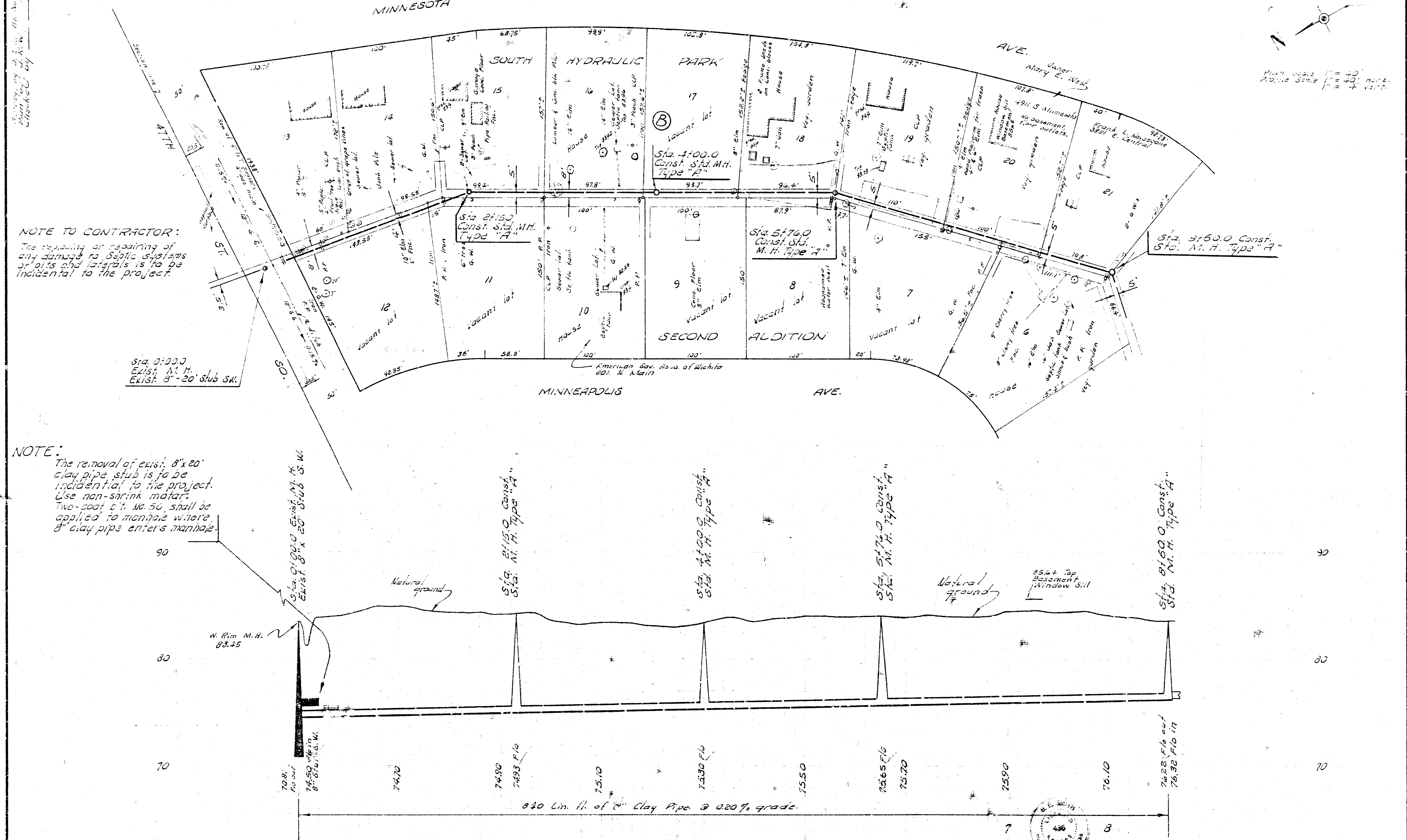


3. N. 84.39' 2" cut NW cor. 20th M.H. 85 cor. 17th & Hydraulic.
 3. N. 83.43' 60 penny Spk. 5130 bench S. Race, P.P. N. Side
 Apparent on E. line of 17th Block B South Hydraulic Park extended.
 3. N. 83.32' 60 penny Spk. 5130 bench W. face R.R. west
 cor. lot 15 Block B South Hydraulic Park.



NOTE TO CONTRACTOR:
 The repairing or replacing of any damaged to 840's systems or 10's and laterals is to be incidental to the project.

NOTE:
 The removal of exist. 8"x20" clay pipe stub is to be incidental to the project. Use non-shrink mortar. Two-coat c't. no. 50 shall be applied to manhole where 8" clay pipe enters manhole.

LAT. 5, SUB. 1, SW INTERCEPTOR SEWER
 CITY OF WICHITA, KANSAS
 B. E. SMITH CITY ENGINEER
 OCT. 1970 PROJECT NO. C20-3

