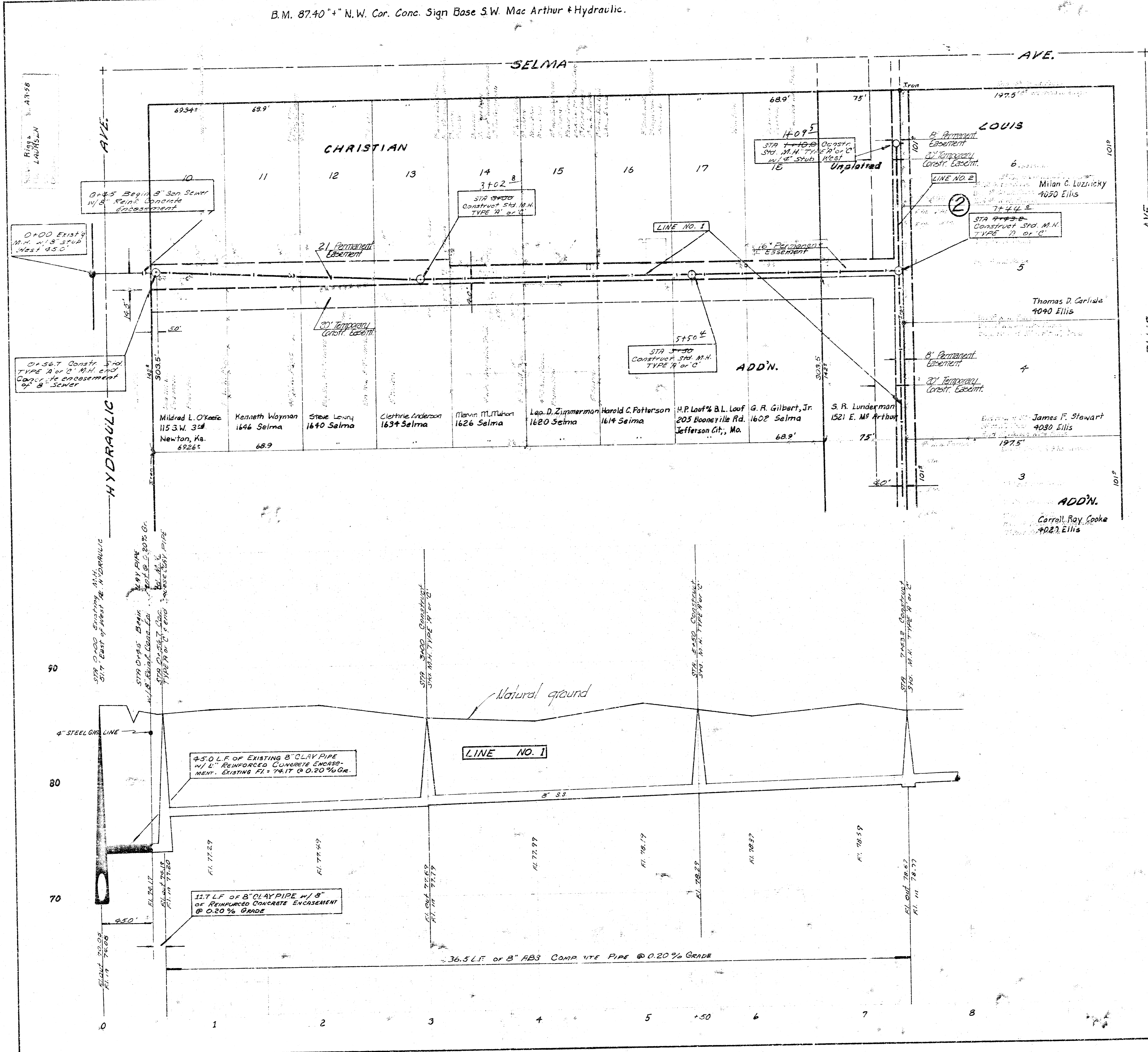
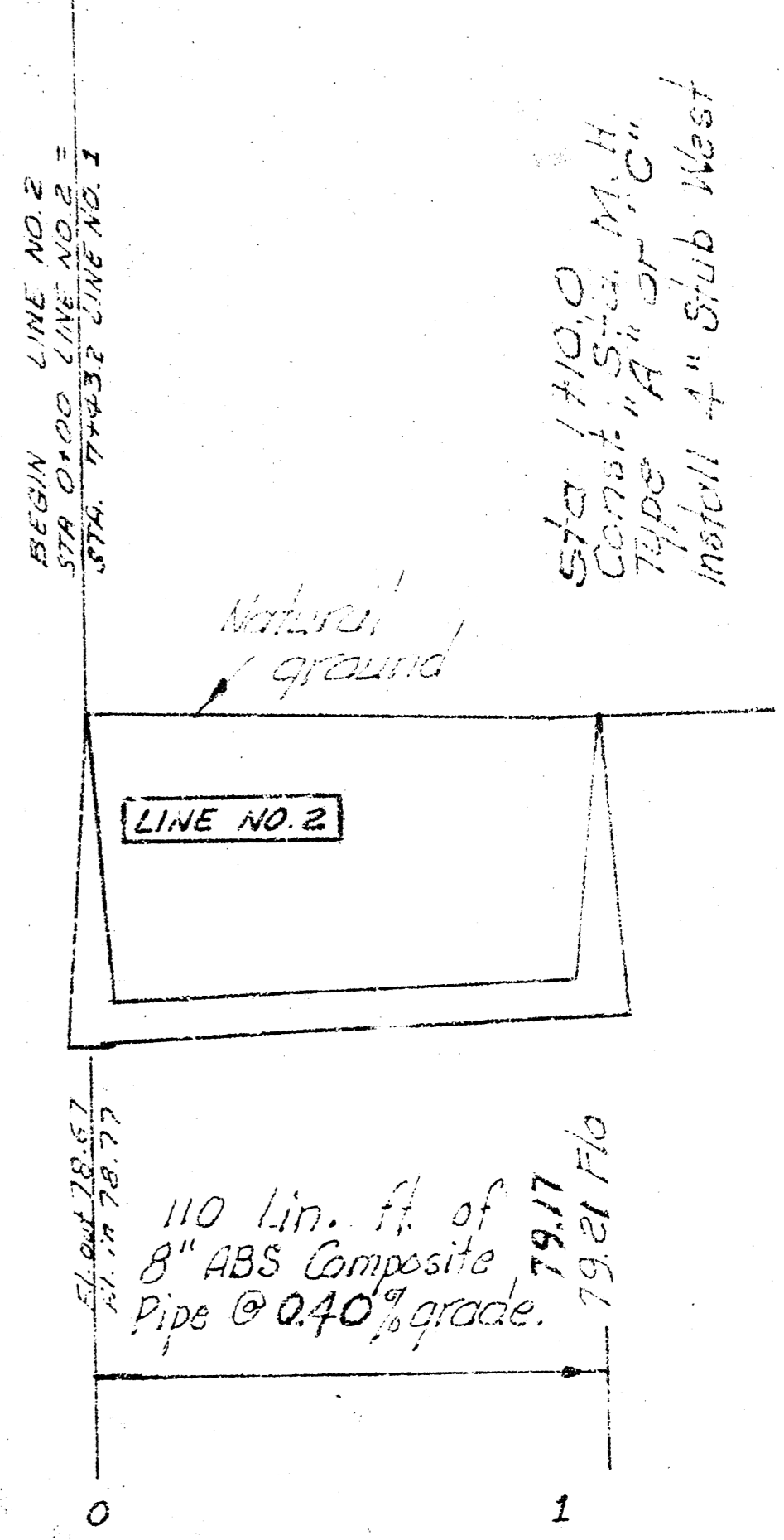


B.M. 87.40'± N.W. Cor. Conc. Sign Base S.W. Mac Arthur + Hydraulic.



NOT: SANITARY SEWER CONSTRUCTION ON IMPAVED TRACT SHALL BE IN CONFORMANCE WITH THE WATER LINE WHICH RISE FROM WATER METER OR SELMA AVE TO HOUSE AT 1100 S.W. MACARTHUR. CONTRACTOR WILL BE REQUIRED TO HIRE A PLUMBER TO INSTALL A COPPER WATER LINE FROM THE HOUSE AT 1100 S.W. MACARTHUR TO A WATER METER TO BE INSTALLED ON MACARTHUR ROAD BY THE CITY OF WICHITA. THE CONTRACTOR SHALL BE RESPONSIBLE FOR THE COST OF THE WATER METER AND THE LINE SHALL BE INSTALLED PRIOR TO CONSTRUCTION OF THE SEWER FROM THE HOUSE. THE LINE WILL BE INSTALLED WITH THE PROPOSED SEWER AND SUCH THAT THERE WILL BE NO INTERFERENCE OF WATER SERVICE TO THE HOUSE AT 1100 S.W. MACARTHUR. THE NEW WATER LINE AND WATER METER SHALL BE AS ALLOWED BY THE CITY ENGINEER. CONTRACTOR WILL BE RESPONSIBLE BY THE CITY OF WICHITA FOR THE COST OF THE WATER METER AND WATER LINE.

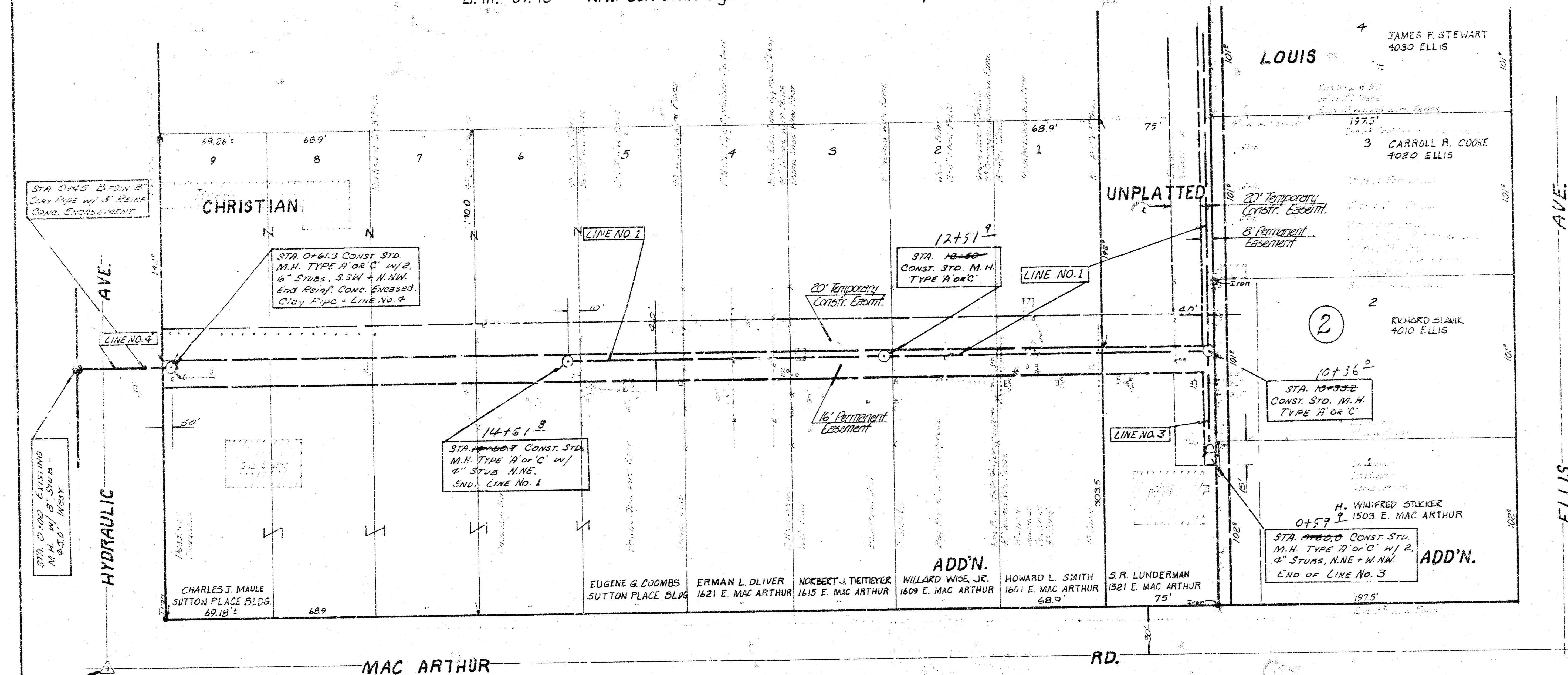
PLAN SCALE 1"=40'
PROFILE SCALE 1"=40' HORIZ.
1"=4' VERT.



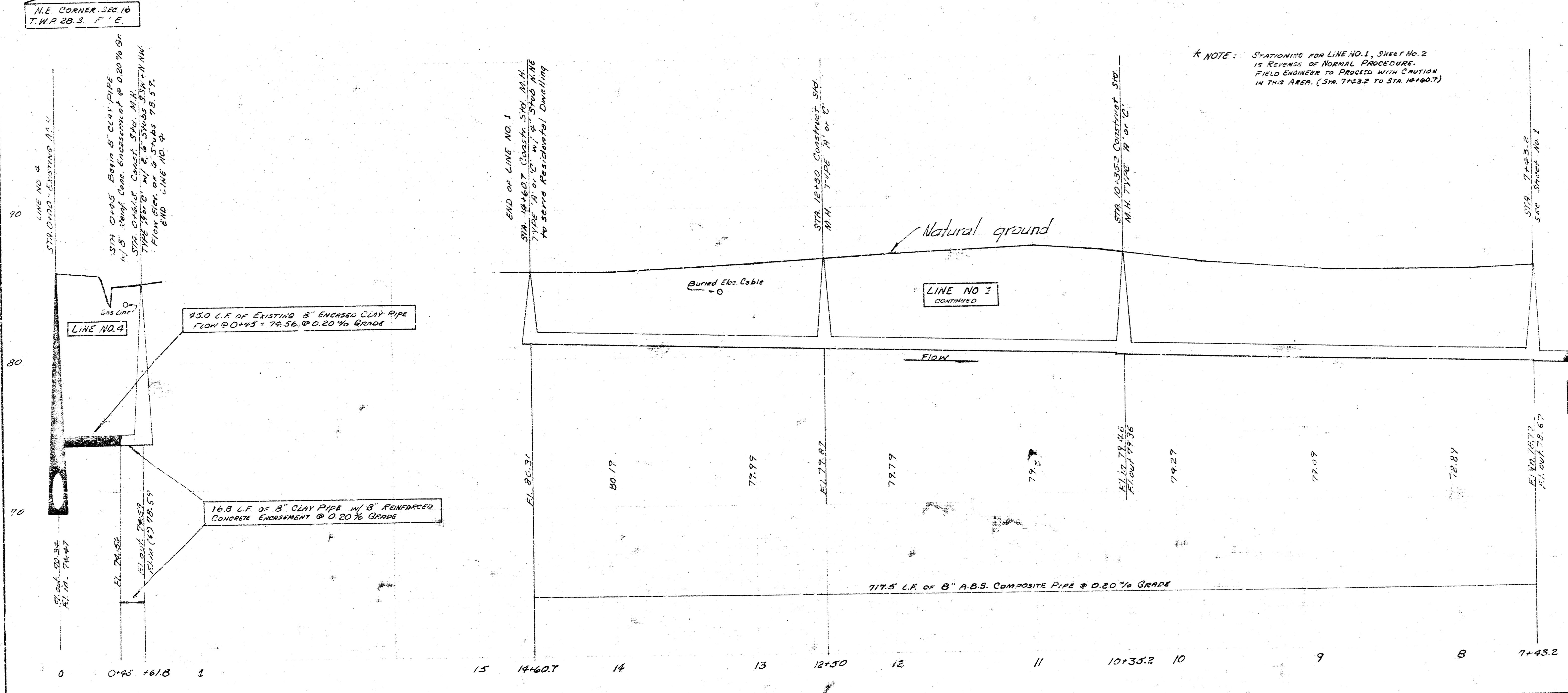
As Built 11-30-76
LAT. 18, SUB. 1, S. W. INTER.
CITY OF WICHITA, KANSAS
R. W. LINN, CITY ENGINEER
DATE: _____
PROJ. NO. DBKL570041

B. M. 87.40 "+ N.W. Cor. Conc. Sign Base S.W. Mac Arthur & Hydraulic.

NOTE: FIELD ENGINEER TO TAKE TIES TO EXISTING IRONS & REPLACE AFTER CONSTRUCTION.



PLAN SCALE 1"=40'
PROFILE SCALE 1"=40' HOR.
1"=4' VERT.



* NOTE: STATIONING FOR LINE NO. 1, SHEET NO. 2 IS REVERSE OF NORMAL PROCEDURE. FIELD ENGINEER TO PROCEED WITH CAUTION IN THIS AREA. (STA. 7+43.2 TO STA. 10+60.7)

LAT. 18, SUB. 1, S. W. INTER.
CITY OF WICHITA, KANSAS
R. W. LINN, CITY ENGINEER
DATE: 12/1/76
PROJ. NO. DBKL 7004i