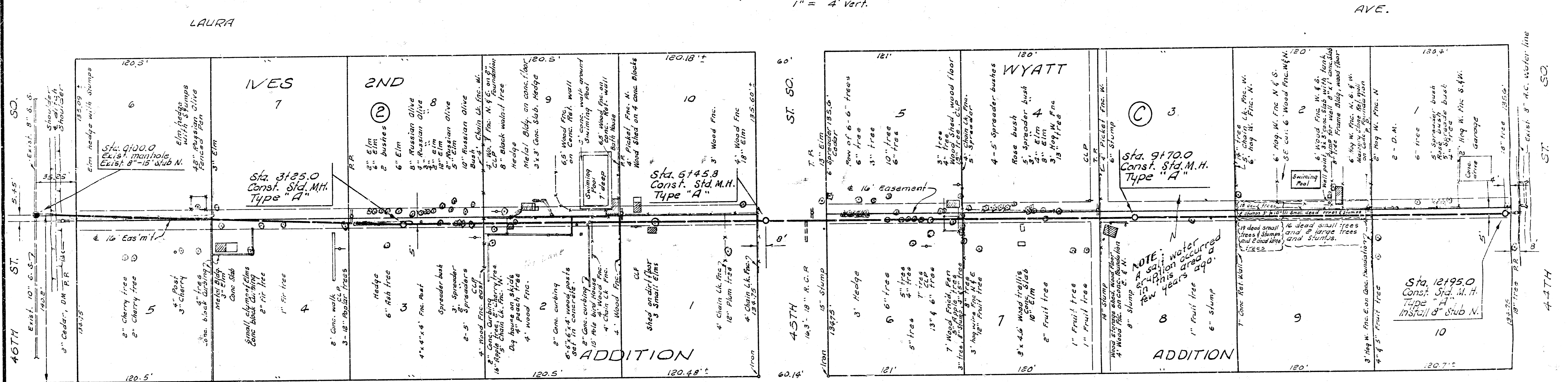


Survey by J. R. W. Checked by J. R. W. Br. No. 442-5

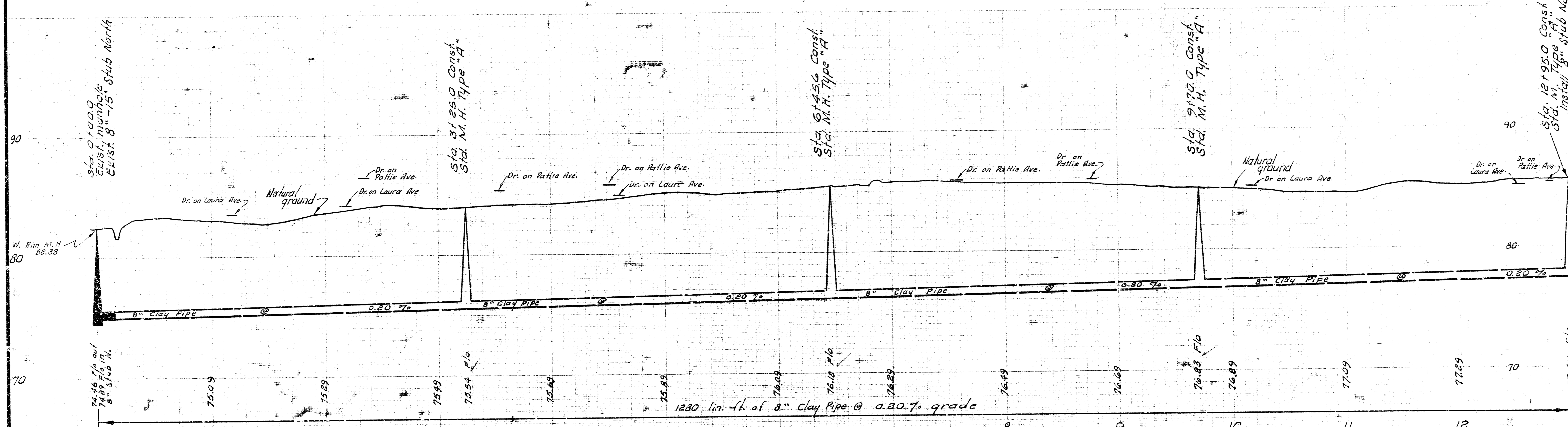
B. M. 87.59 "M" in Mueller on top Fire Hydrant NW cor. 45th & Laura.  
 B. M. 86.58 "M" in Mueller on top Fire Hydrant SW cor. 44th & Laura.  
 B. M. 84.85 Mueller "M" on Fire Hydrant Flange NW cor. 46th & Laura.

B. M. 86.78 Top S.E. Bolt Fire Plug NE cor. Lulu & 46th.  
 B. M. 82.57 40" Nail S.S. Power Pole NW cor. Pattie & 46th.  
 B. M. 84.76 60" Nail S.S. Power Pole N.S. 46th @ Sta. 81-27 betw. Victoria & Ellis.

Plan Scale 1" = 40'  
 Profile Scale 1" = 40' Horiz.  
 4" Vert.



**NOTE:**  
 The removing of bird house poles, clothesline poles, conc. curbing, conc. block curbing, masonry stone retaining walls, culvert pipes, hedges, trees, stumps, fences etc. and the replacing of the bird house poles, clothesline poles, conc. curbing, conc. block curbing, masonry stone retaining walls, culvert pipes, fences etc. is to be included in the Lump sum bid of "Clearing of Right of Way".



LAT. 20, SUB. 1, S.W. INTERCEPTOR SEWER  
 CITY OF WICHITA, KANSAS  
 B. E. SMITH — CITY ENGINEER  
 JAN. 1971 PROJECT NO. C20-45