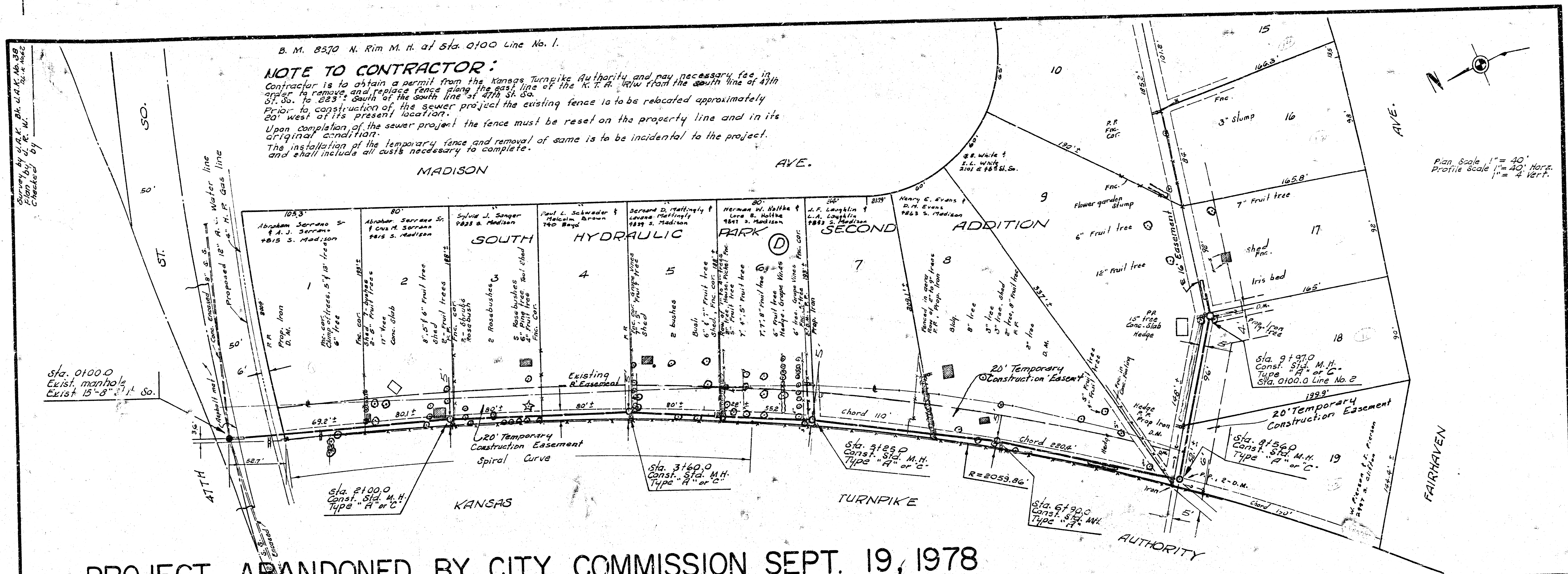


Survey by G. H. & W. L. H. 11/14/39
 100' by 100' 1/2" x 1/2" scale
 Checked by

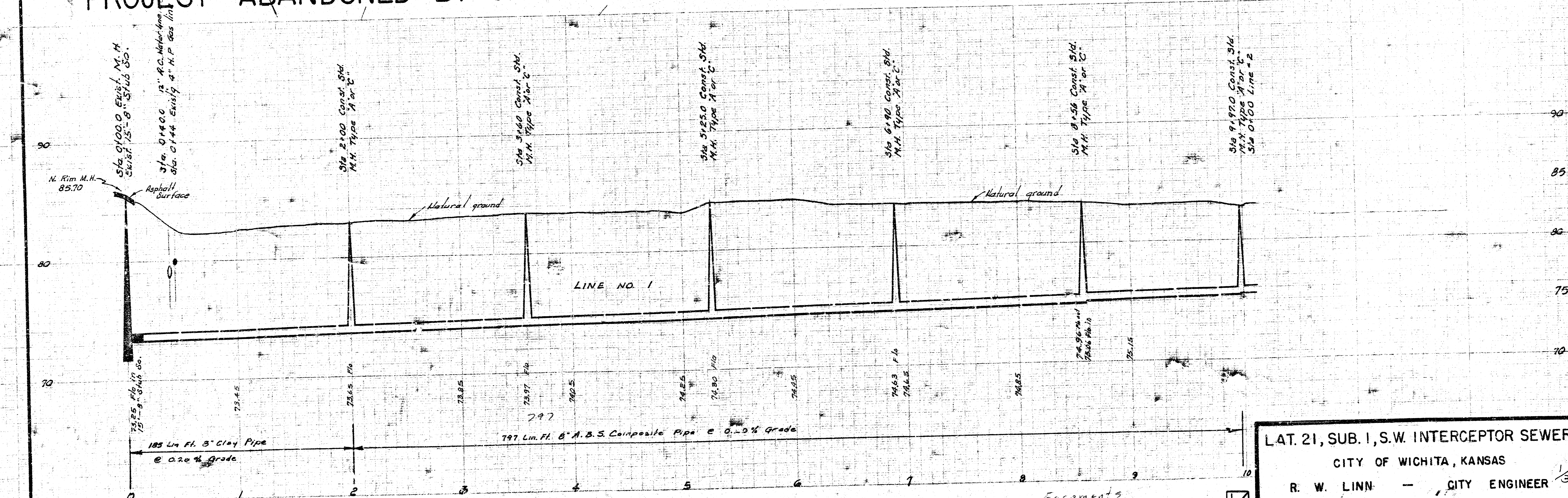
B. M. 8570 N. Rim M. H. at Sta. 0100 Line No. 1.

NOTE TO CONTRACTOR:
 Contractor is to obtain a permit from the Kansas Turnpike Authority and pay necessary fee in order to remove and replace fence along the east line of the K. T. A. R/W from the south line of 47th St. So. to 823' South of the south line of 47th St. So. Prior to construction of the sewer project the existing fence is to be relocated approximately 20' west of its present location. Upon completion of the sewer project the fence must be reset on the property line and in its original condition. The installation of the temporary fence and removal of same is to be incidental to the project and shall include all costs necessary to complete.

Plan Scale 1" = 40'
 Profile Scale 1" = 4' Vert.



PROJECT ABANDONED BY CITY COMMISSION SEPT. 19, 1978

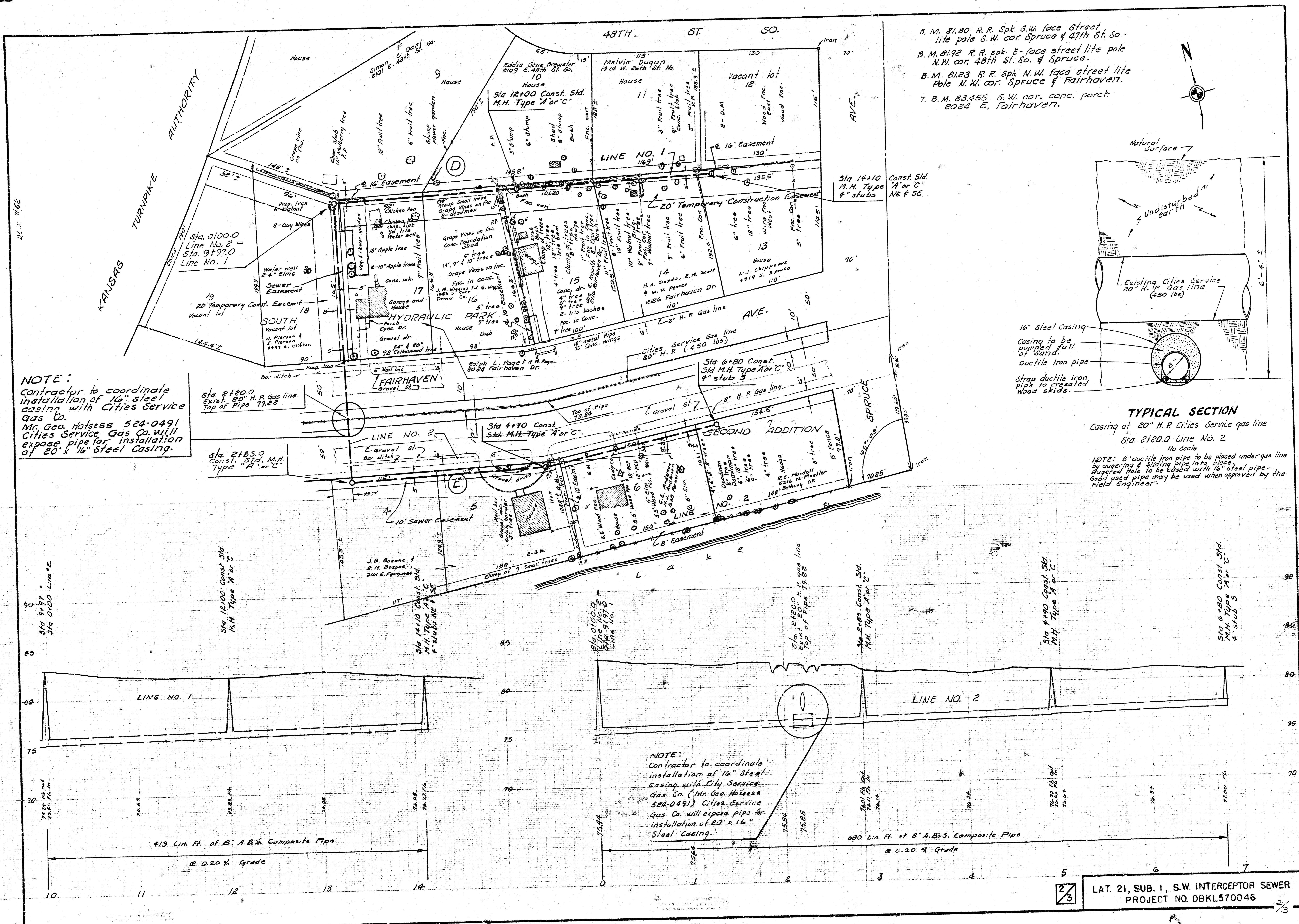


LAT. 21, SUB. 1, S.W. INTERCEPTOR SEWER
 CITY OF WICHITA, KANSAS
 R. W. LINN - CITY ENGINEER
 1971 PROJECT NO. DBKL 5 70046

Project Abandoned by City Commission Sept 19, 1978

Easements written

Hold for R/W



NOTE:
 Contractor to coordinate installation of 16" steel casing with Cities Service Gas Co.
 Mr. Geo. Holness 524-0491
 Cities Service Gas Co. will expose pipe for installation of 20" x 16" Steel Casing.

Sta. 2+20.0
 Const. 20" H.P. Gas line.
 Exist. 20" H.P. Gas line.
 Top of Pipe 79.22

Sta. 2+85.0
 Const. Std. M.H. Type "A" or "C".

Sta. 12+00 Const. Std. M.H. Type "A" or "C".

Sta. 14+10 Const. Std. M.H. Type "A" or "C".

Sta. 0+00.0
 Const. Std. M.H. Type "A" or "C".

Sta. 2+00.0
 Const. Std. M.H. Type "A" or "C".

Sta. 2+55.0 Const. Std. M.H. Type "A" or "C".

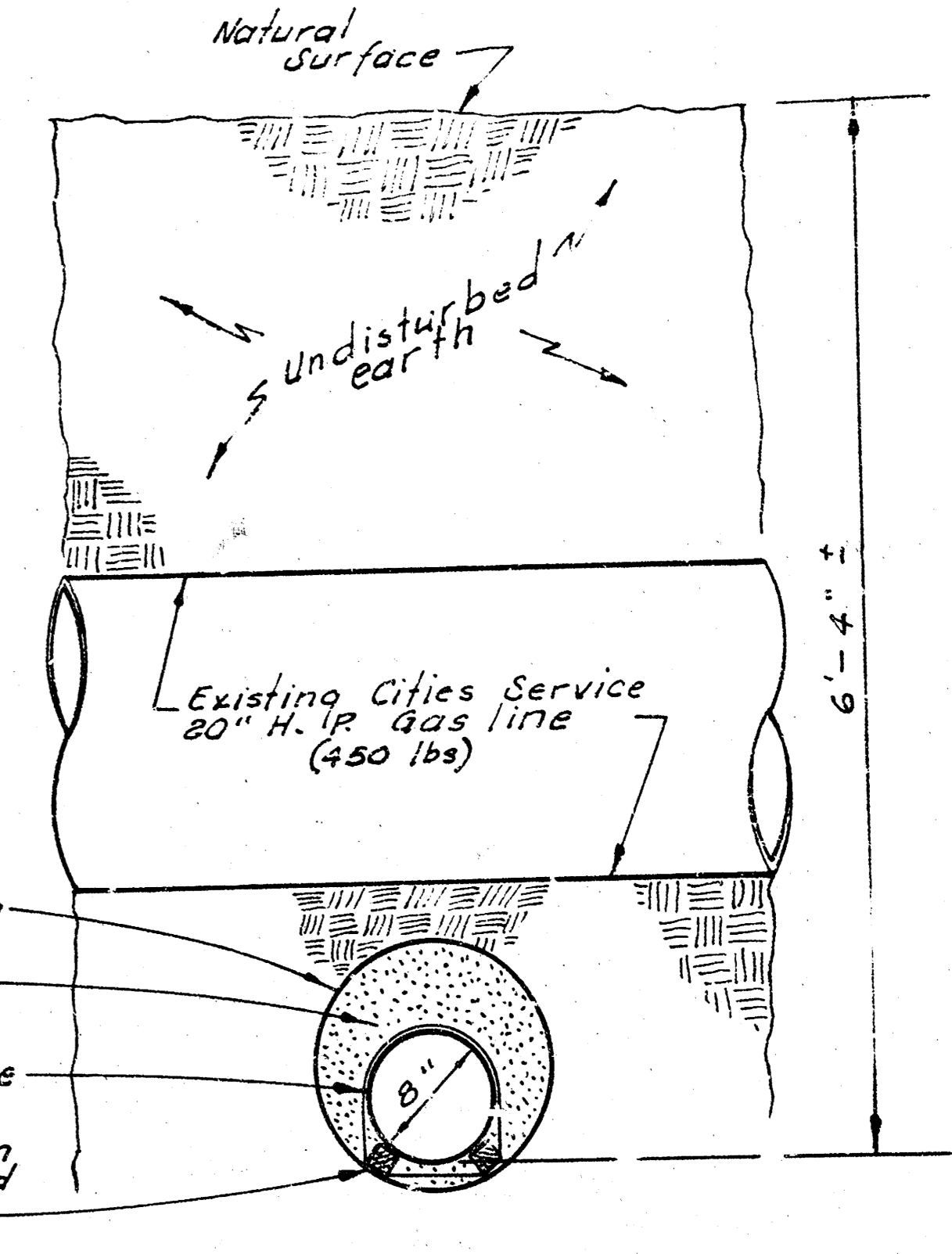
Sta. 4+90 Const. Std. M.H. Type "A" or "C".

Sta. 6+80 Const. Std. M.H. Type "A" or "C".

NOTE:
 Contractor to coordinate installation of 16" steel casing with City Service Gas Co. (Mr. Geo. Holness 524-0491). Cities Service Gas Co. will expose pipe for installation of 20" x 16" Steel Casing.

680 Lin. Ft. of 8" A.B.S. Composite Pipe @ 0.20% Grade

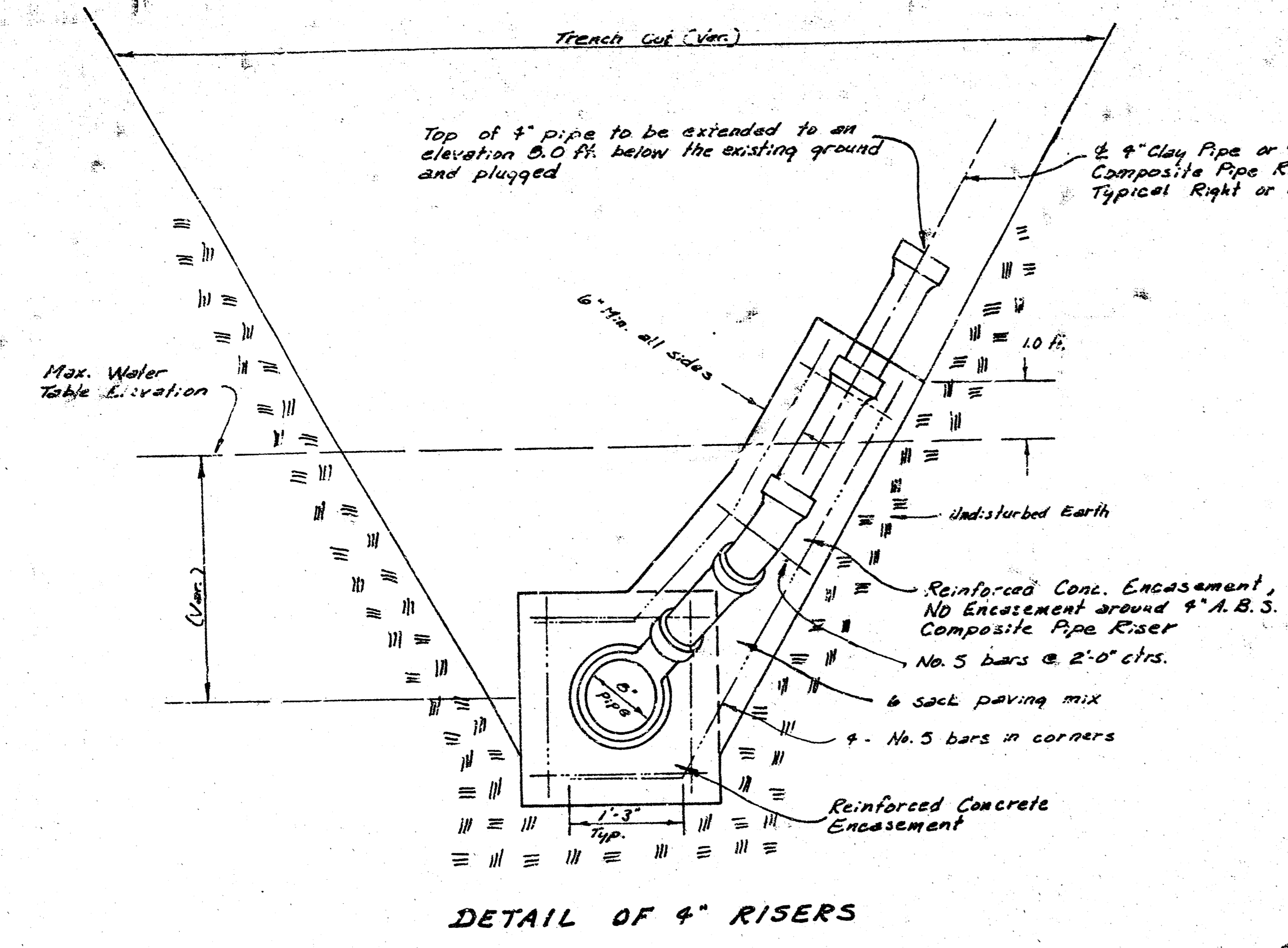
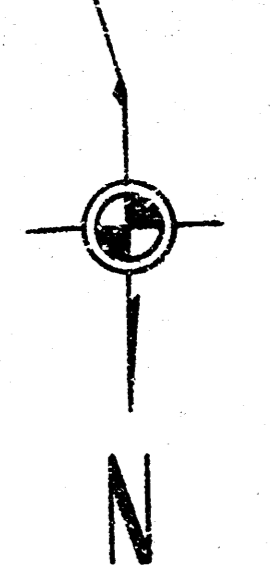
- B. M. 81.80 R.R. Spk. S.W. face Street lite pole S.W. cor. Spruce & 47th St. So.
- B. M. 81.92 R.R. spk E-face street lite pole N.W. cor. 48th St. So. & Spruce.
- B. M. 81.23 R.R. Spk N.W. face street lite Pole N.W. cor. Spruce & Fairhaven.
- T. B. M. 83.455 S.W. cor. conc. porch 2024 E. Fairhaven.



TYPICAL SECTION
 Casing of 20" H.P. Cities Service gas line
 Sta. 2+20.0 Line No. 2
 No Scale

NOTE: 8" ductile iron pipe to be placed under gas line by augering & sliding pipe into place. Augered hole to be cased with 16" steel pipe. Good used pipe may be used when approved by the Field Engineer.

T. B. M. 83.455 S.W. cor. paroh
2024 S. Fairhaven.



DETAIL OF 4" RISERS

