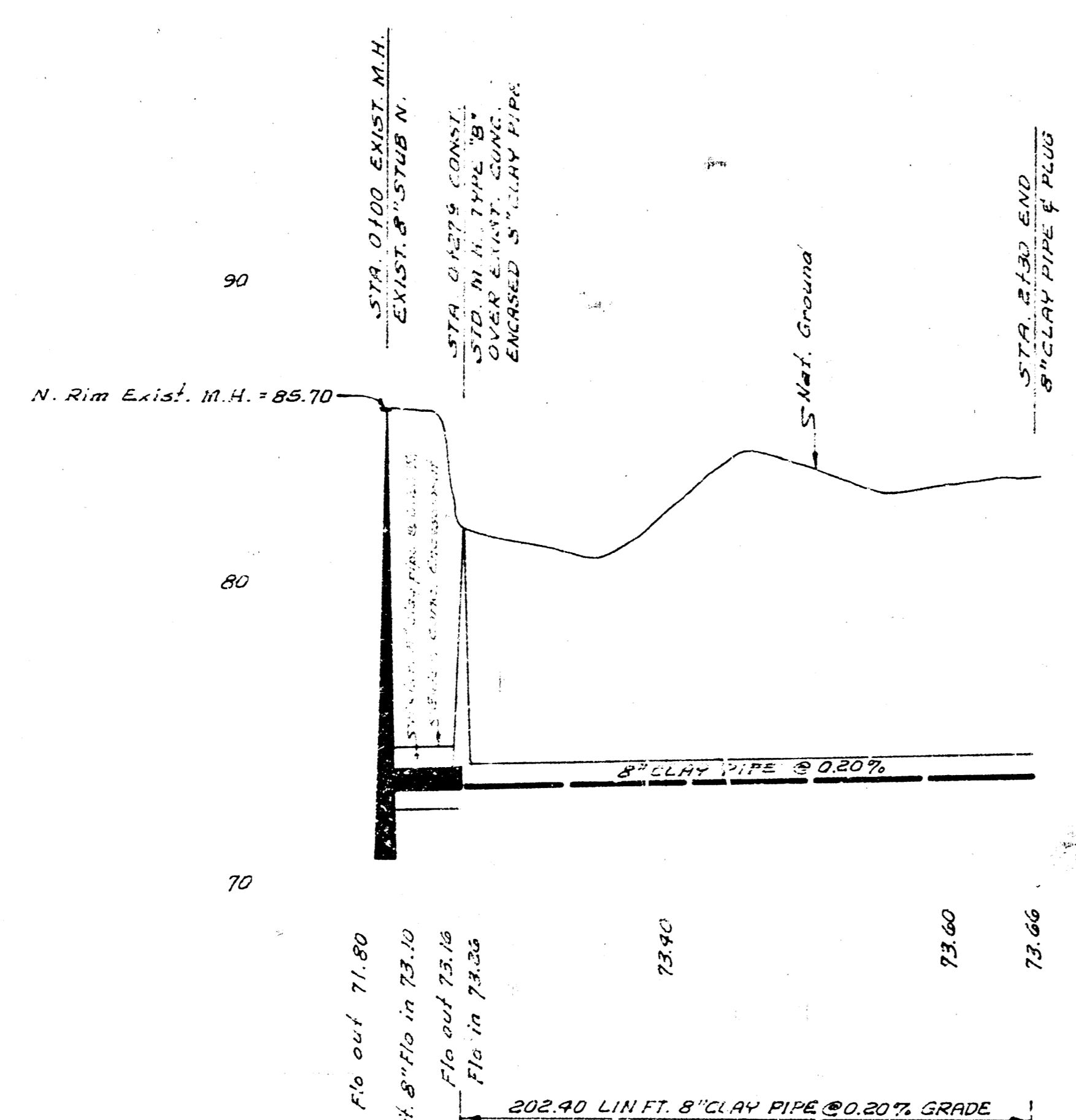
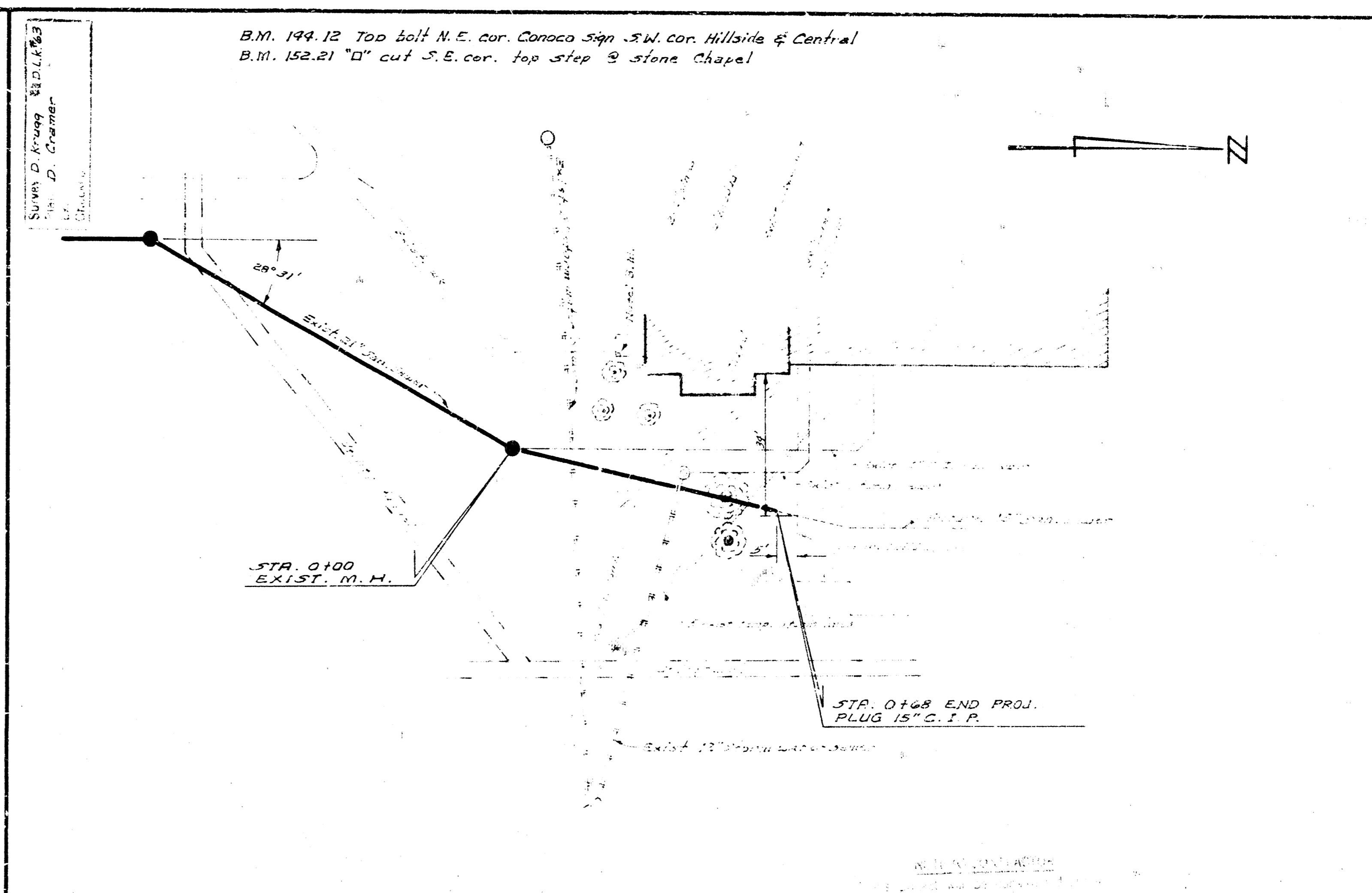


B.M. 89.39 "1" on N.W. cor. Conc. M.H. S.E. cor. 47th St. So. 2nd Quarter  
 B.M. 85.70 N. Rim M.H. STA. 0100

Plan Scale 1"=40'  
 Profile Scale 1"=40' Hor.  
 1"=4' Vert.

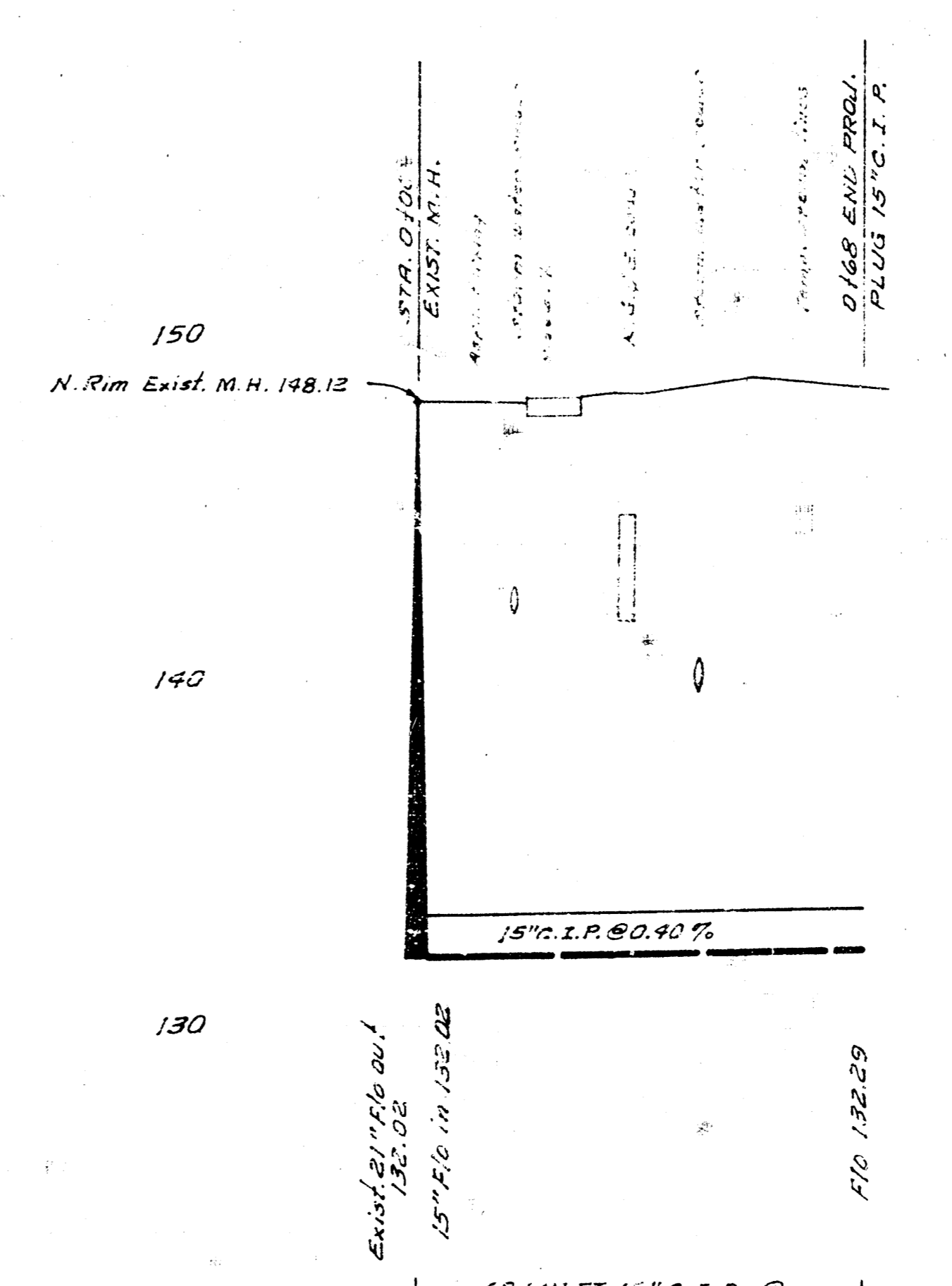


LAT. 22, SUB 1, S.W. INTERCEPTOR  
 CITY OF WICHITA, KANSAS  
 B. E. SMITH, CITY ENGINEER  
 PROJ. NO. C20-47  
 DATE: NOV. 1970



B.M. 144.12 Top half N.E. cor. Conoco sign - S.W. cor. Hillside & Central  
 B.M. 152.21 "D" cut S.E. cor. top step @ Stone Chapel

Plan Scale 1"=40'  
 Profile Scale 1"=40' Hor.  
 1"=4' Vert.



2ND EXT. TO LAT. 1, WESLEY INTERCEPTOR  
 CITY OF WICHITA, KANSAS  
 B. E. SMITH, CITY ENGINEER  
 DATE: 11, 13, 1970