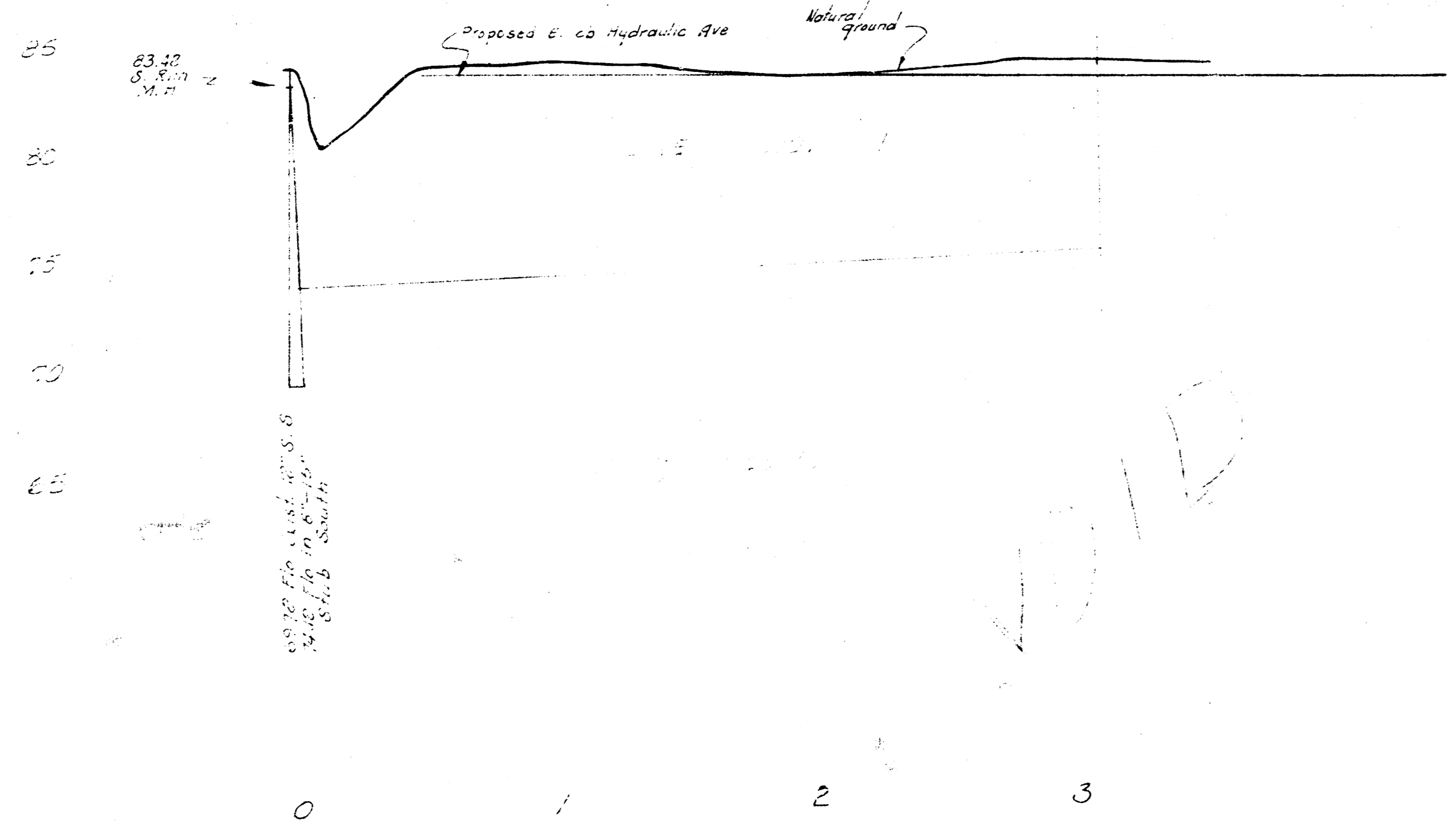
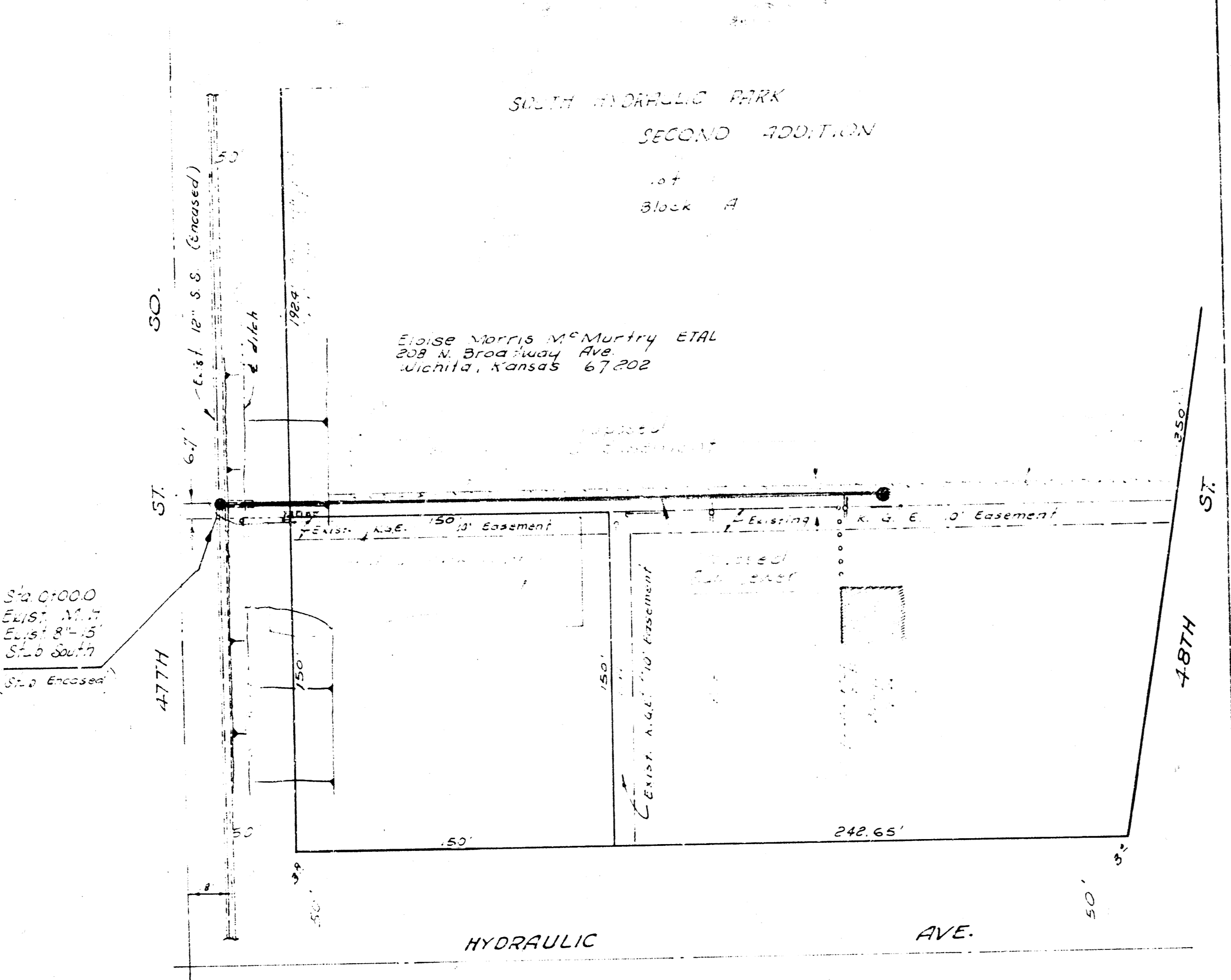
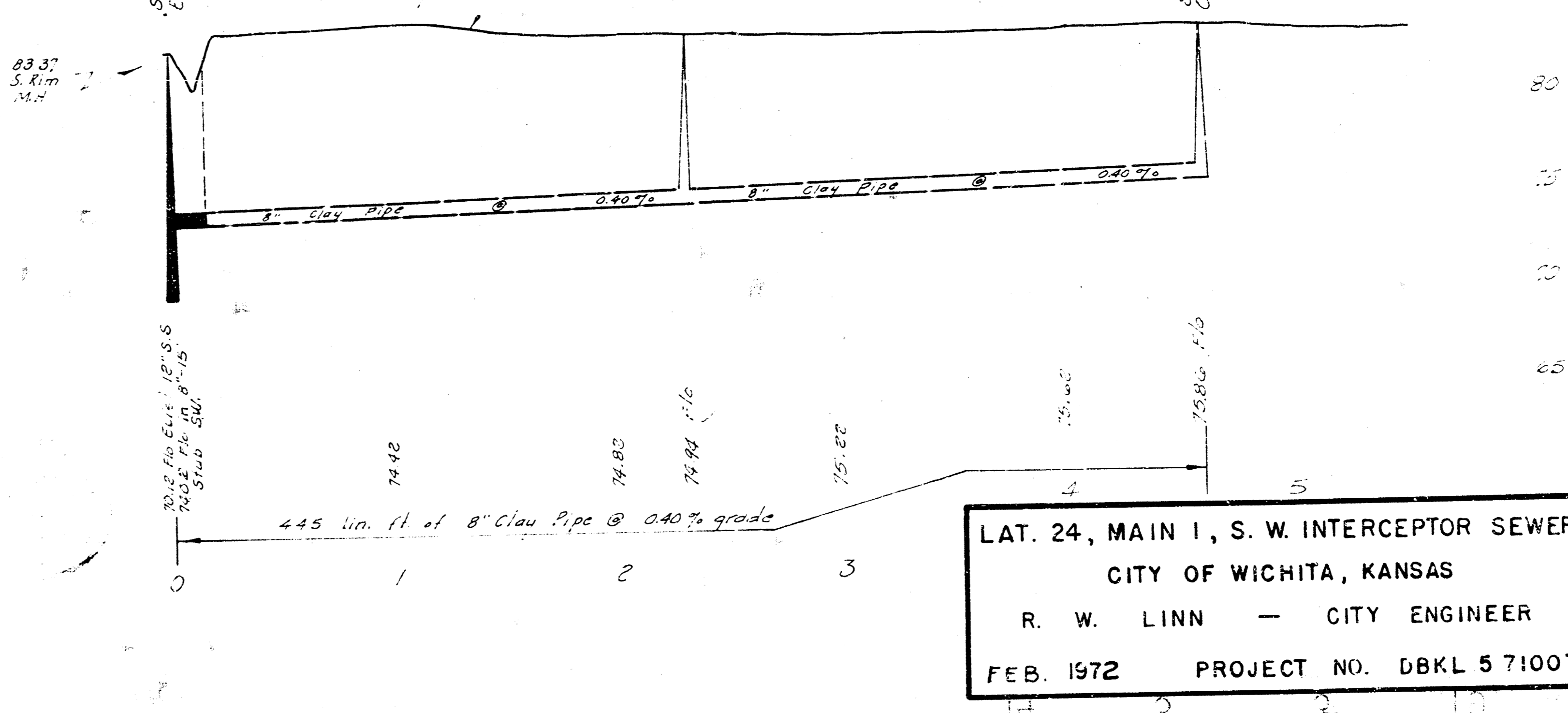
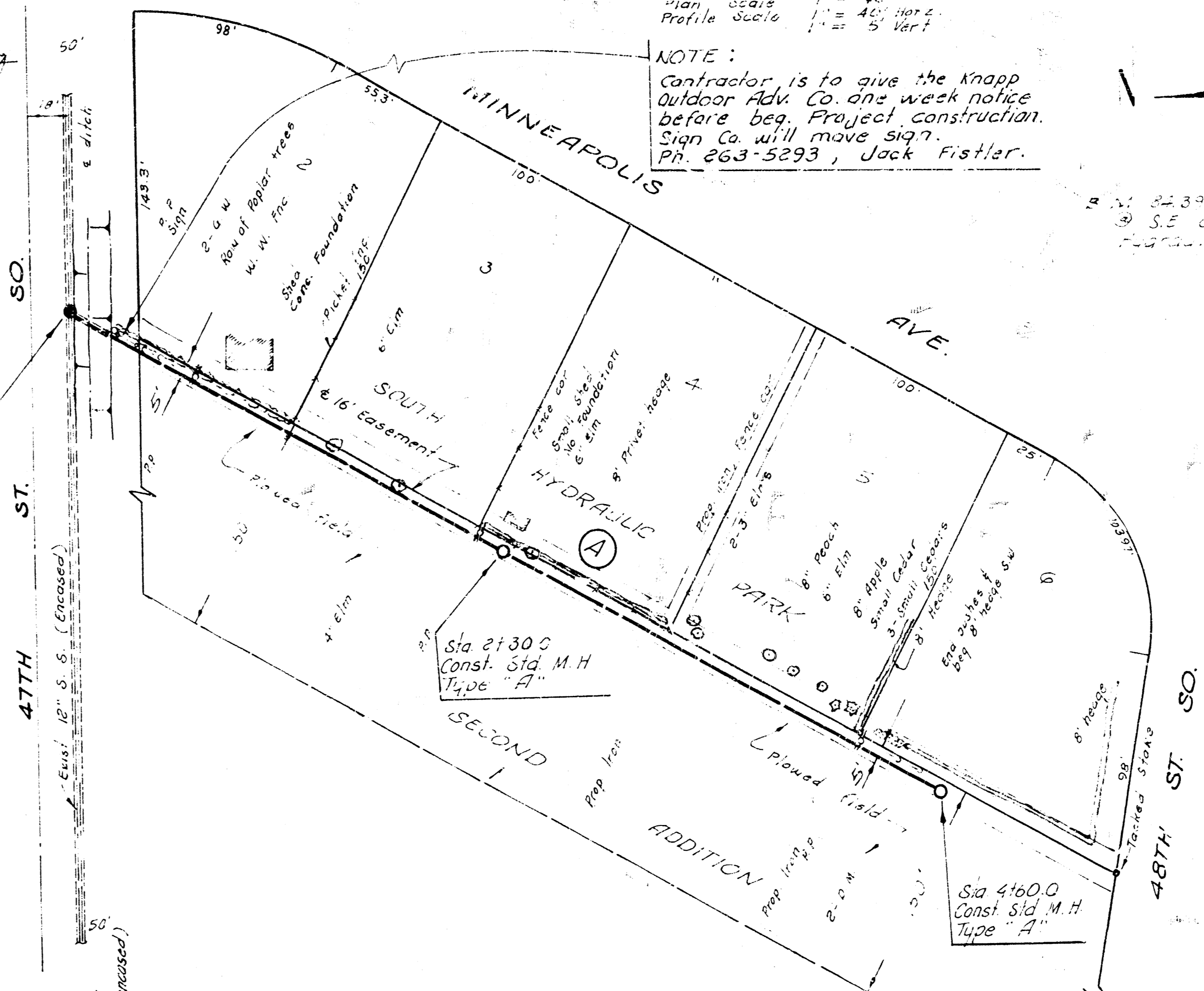


P.R. 22



Survey by D.C.D.
 B.K.W. D.C.D. 1/4
 Plan by J.R.W.
 Checked by J.R.W.

Sta 0100.0
 Exst. M.H.
 Exst. 8" x 15"
 Slab Southwest
 Slab crosses
 out of W. side
 of Al. H.



Plan Scale 1" = 40'
 Profile Scale 1" = 5' Vert

NOTE:
 Contractor is to give the Knapp
 Outdoor Adv. Co. one week notice
 before beg. Project construction.
 Sign Co. will move sign.
 Ph. 263-5293, Jack Fister.

Sta 0100.0 Exst. M.H.
 Sta 0130.0 Exst. M.H.
 Sta 4160.0 Exst. M.H.

LAT. 24, MAIN I, S. W. INTERCEPTOR SEWER
 CITY OF WICHITA, KANSAS
 R. W. LINN — CITY ENGINEER
 FEB. 1972 PROJECT NO. DBKL 571007