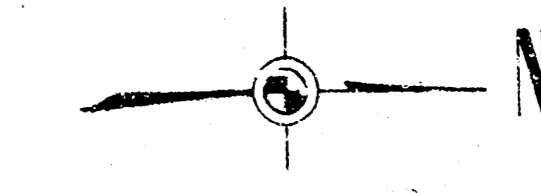
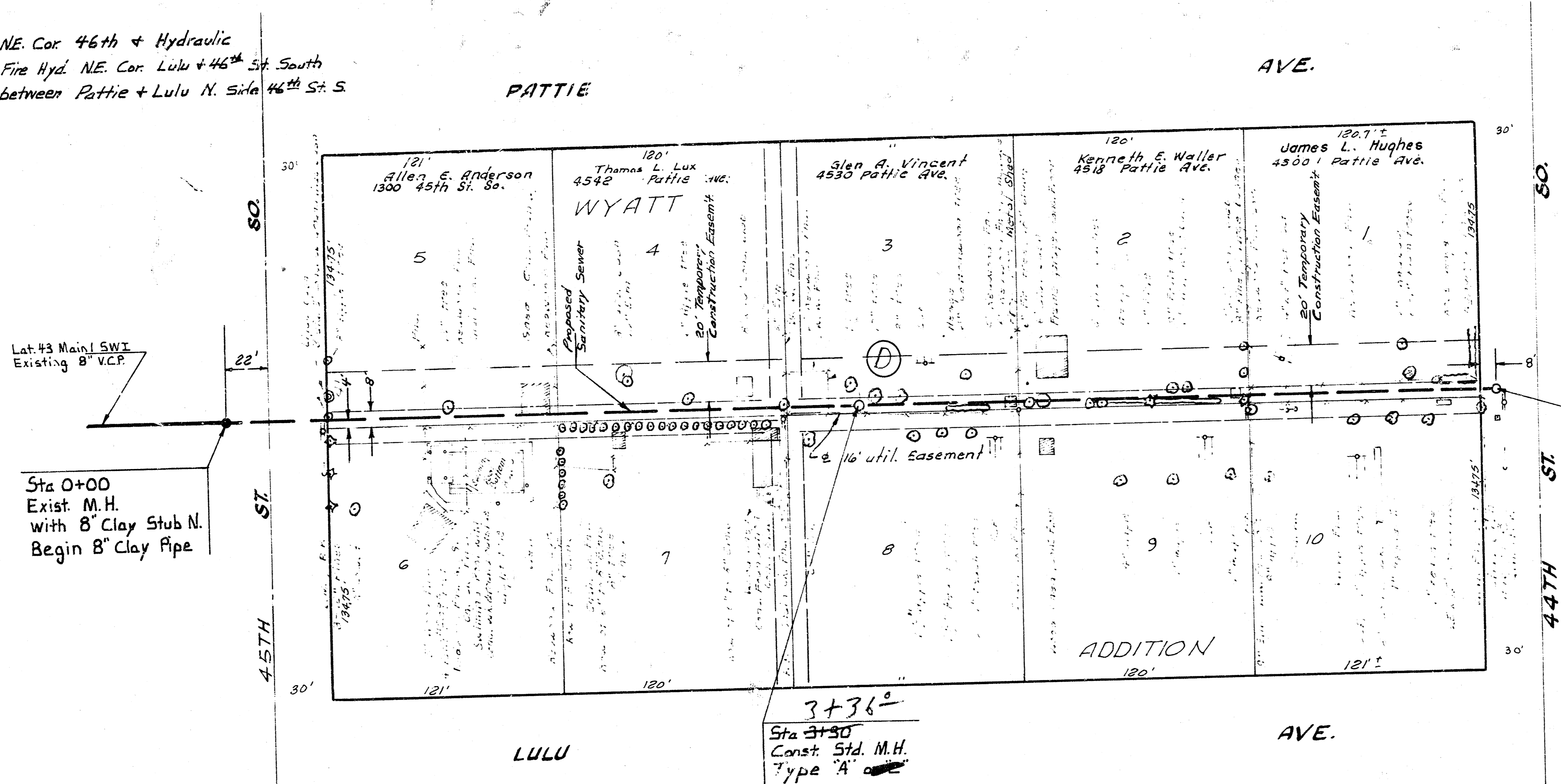


B.M. 85.78 Top N. Bolt Fire Hyd. NE. Cor. 46th + Hydraulic  
 B.M. 86.86 S.E. Bolt Top Flange Fire Hyd. NE. Cor. Lulu + 46th St. South  
 B.M. 84.51 R.R. Spk. S. Side PP between Pattie + Lulu N. Side 46th St. S



Plan Scale 1" = 40'  
 Profile Scale 1" = 40' Horiz.  
 1" = 5' Vert.

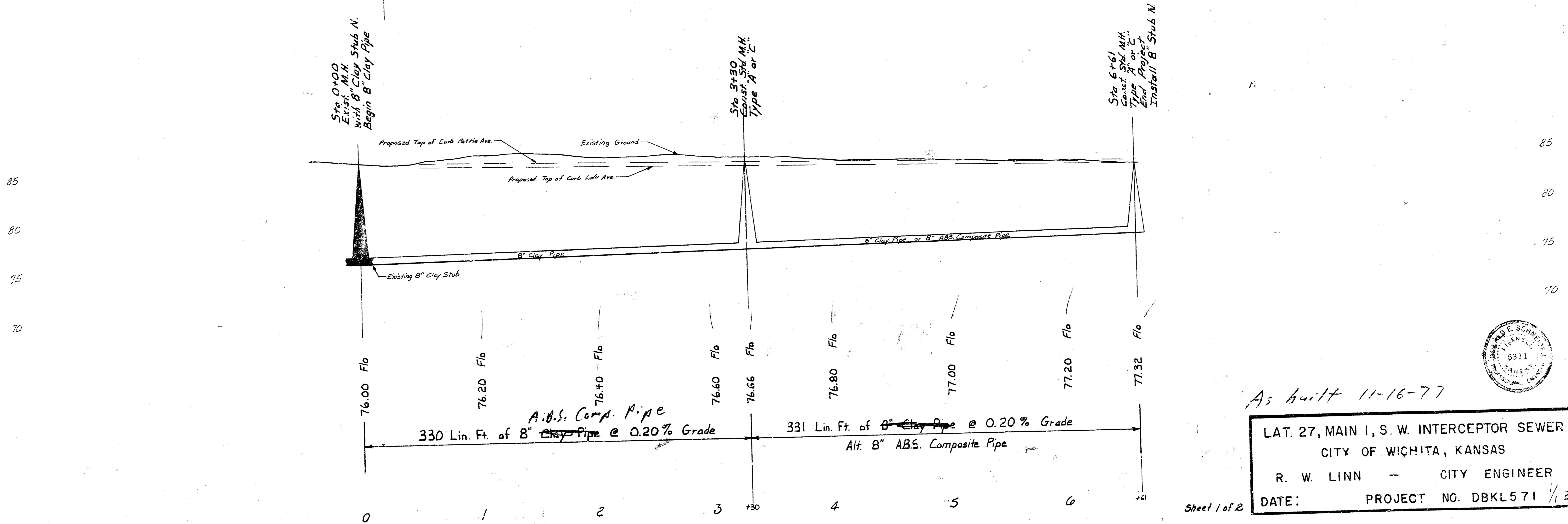


Sta 6+61  
 Const. Std. M.H.  
 Type 'A' or 'C'  
 End Project  
 Install 8" Stub N.

Sta 3+30  
 Const. Std. M.H.  
 Type 'A' or 'C'

Sta 0+00  
 Exist. M.H.  
 with 8" Clay Stub N.  
 Begin 8" Clay Pipe

NOTE: CONTRACTOR SHALL GIVE ALL PROPERTIES AFFECTED BY THE CONSTRUCTION OF THIS PROJECT A MINIMUM OF 24 HOURS ADVANCE NOTICE PRIOR TO STARTING CONSTRUCTION. CONDITIONS OF RIGHT-OF-WAY ACQUISITION REQUIRES THE CONTRACTOR TO MAINTAIN ANY DRAINAGE THAT IS DAMAGED AS A RESULT OF THE CONSTRUCTION OF THIS SEWER.



As built 11-16-77

LAT. 27, MAIN I, S. W. INTERCEPTOR SEWER  
 CITY OF WICHITA, KANSAS  
 R. W. LINN — CITY ENGINEER  
 DATE: PROJECT NO. DBKL571 1/2