

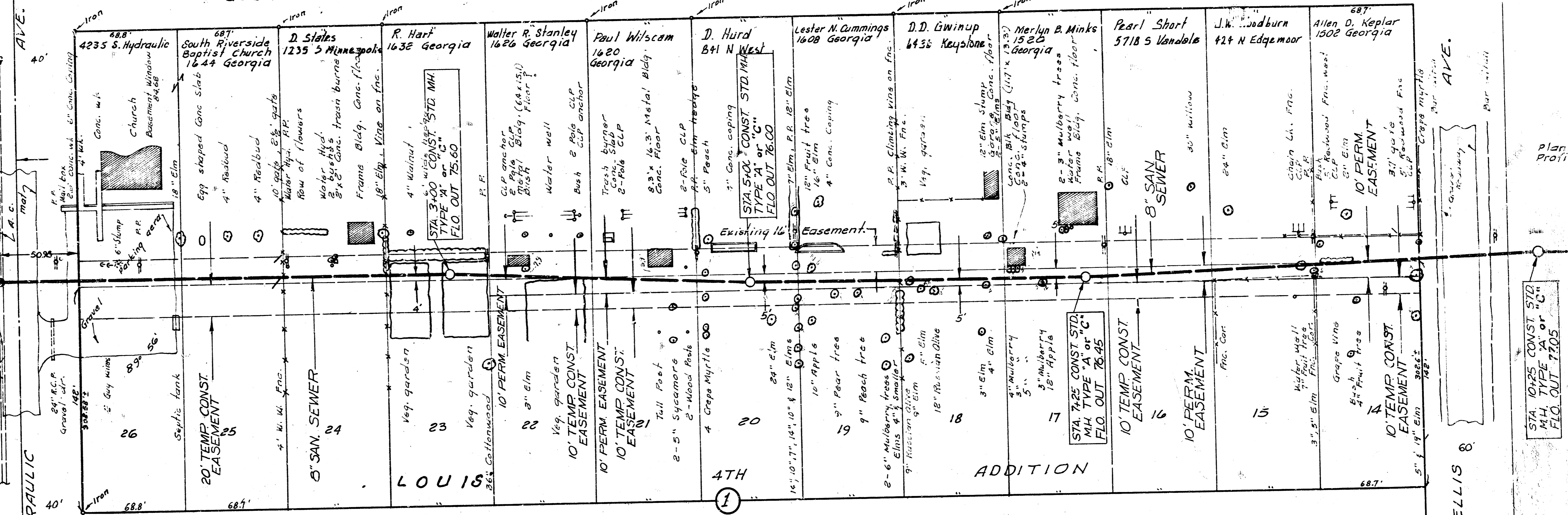
B.M. 85.92 Head of east bolt Fire Hydrant S.W. cor. Alta & Hydraulic.

NOTE: SOUTH RIVERSIDE BAPTIST CHURCH WANTS THE SEWER COMPLETED ON THEIR PROPERTY BETWEEN MONDAY AND FRIDAY SO THEY CAN USE THE PARKING ON SUNDAY.

NOTE: START PROJECT AT EXISTING M.H. - NEW FLO. IN ELE. 75.00

GEORGIA

AVE.



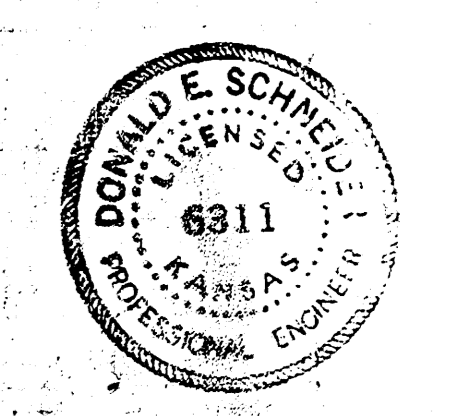
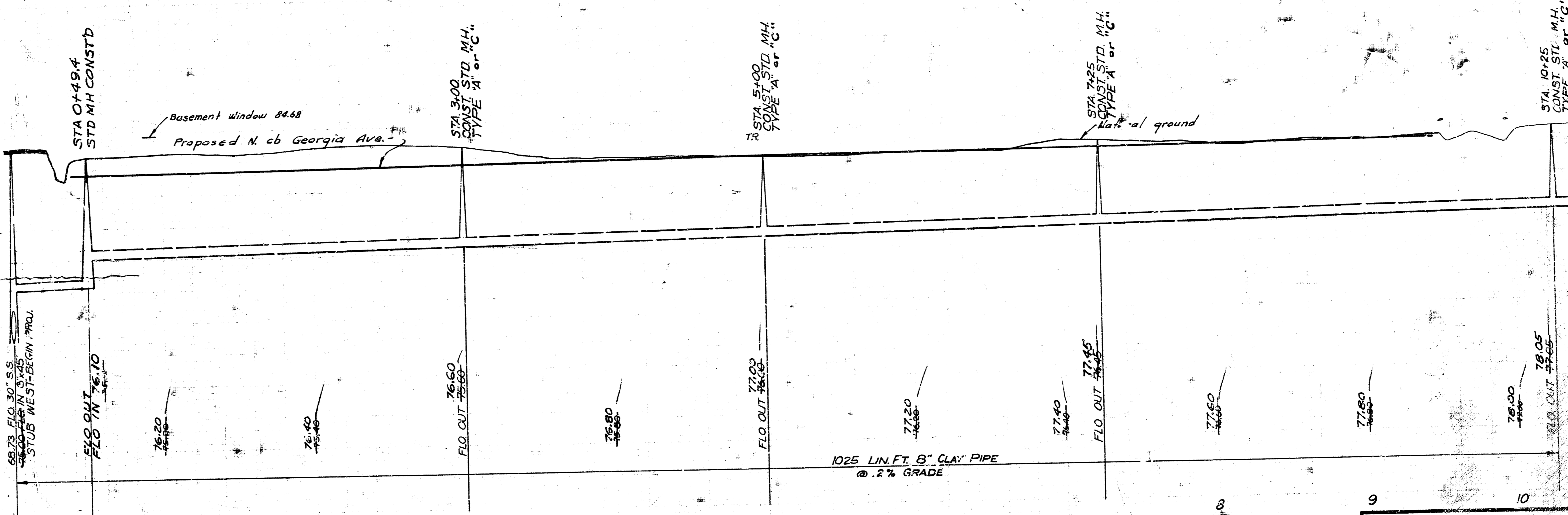
Plan Scale 1" = 40' Horiz
Profile Scale 1" = 4' Vert

NOTE: CONTRACTOR TO REPLACE ALL FENCES THAT ARE REMOVED TO FACILITATE CONSTRUCTION OF THE SEWER. FENCES TO BE REPLACED IN A CONDITION EQUAL TO OR BETTER THAN THE ORIGINAL.

NOTE: WATER WELL LOCATED ON LOT 14 IS TO BE PROTECTED DURING CONSTRUCTION OF SEWER TO PREVENT ANY DAMAGE.

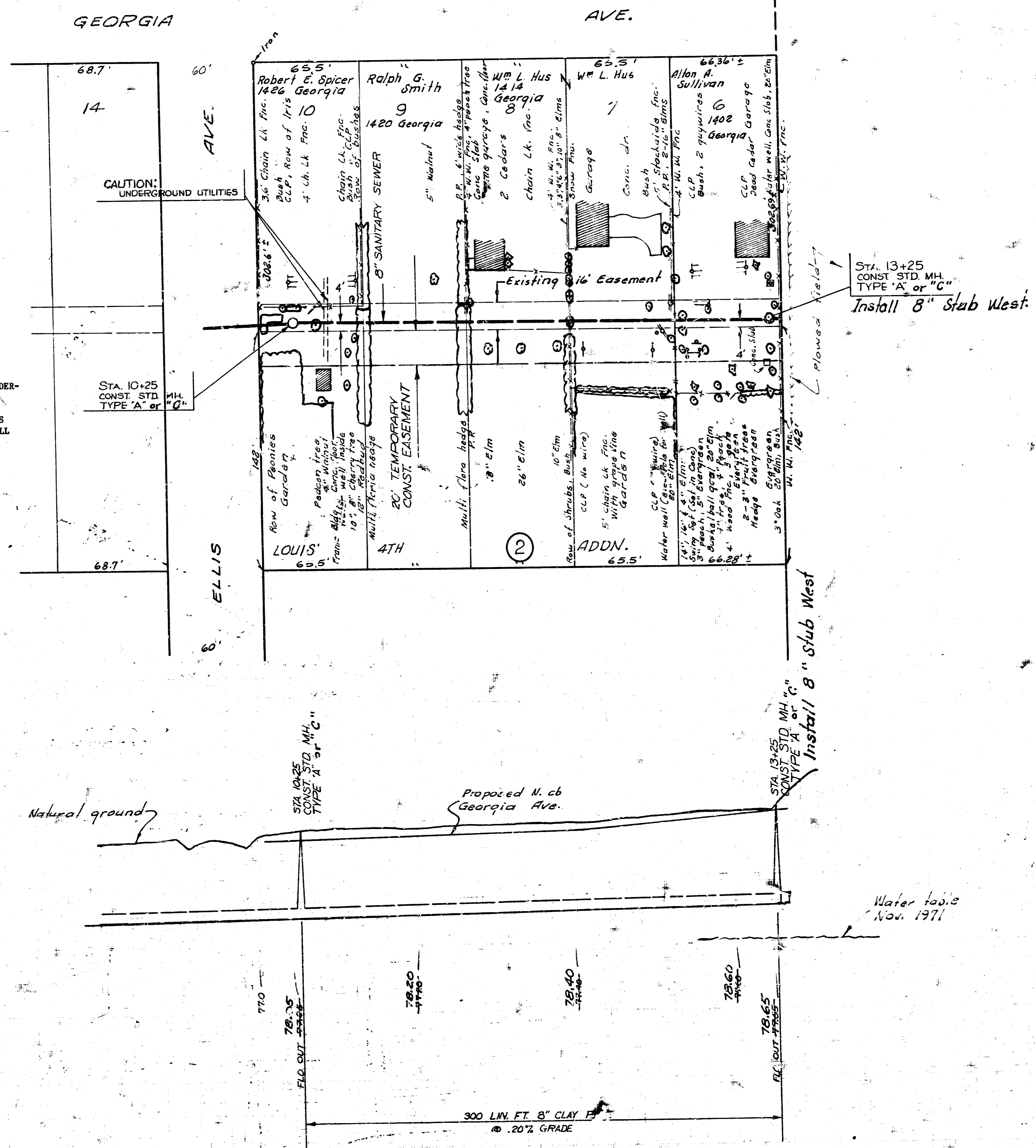
85
80
75
70
65

NOTE: Plug opening in manhole with brick and mortar plug.
GRADE ELEV'S RAISED 1" BY CITY ENGR.



LAT. 28, MAIN I, S. W. INTERCEPTOR SEWER
CITY OF WICHITA, KANSAS
W. LINN - CITY ENGINEER
1974 PROJECT NO. DBKL 5 71033

B. M. 86.195 60 penny nail N-face R.P.
W. L. Ellis 190° N. of E. A11a.



NOTE: CONTRACTOR TO REMOVE AND REPLACE UNDERGROUND WATER LINE AND ELECTRIC LINE AT APPROXIMATELY STA. 10+45 AS NECESSARY TO FACILITATE CONSTRUCTION OF THE SEWER. THIS WORK WILL NOT BE PAID FOR DIRECTLY AND SHALL BE CONSIDERED AS SUBSIDIARY TO THE OTHER ITEMS OF WORK.

CAUTION: UNDERGROUND UTILITIES

STA. 13+25
CONST. STD. MH
TYPE "A" or "C"
Install 8" Slab West

Install 8" Slab West