

LATERAL 61, MAIN I
SOUTHWEST INTERCEPTOR

468-76-245-81099-000-000-001

CITY OF WICHITA, KS.

R.W. BRUGGEMAN — DIR. ENGINEERING



LOCATION MAP

INDEX TO DRAWINGS

LINE	SH NO.
LINE 1	2-4
LINE 2	6
LINE 3	5
LINE 4	3
LINE 5	5

Note -
Trees to be removed are marked with a tree symbol, any tree which in the opinion of the Engineer can be spared, shall be saved.
Clearing Right-of-Way shall be a lump sum bid and will include tree removal and fence removed & replaced.
Contractor to verify utility crossings located thruout the project.
Fences are to be replaced in the same condition as they were prior to construction.
Contractor to use caution when crossing the Cities Service Pipeline at the two locations. Clearance is minimal on Line 3.

NOTE: REINFORCED CONCRETE ENCASEMENT WHICH DOES NOT EXTEND TO MANHOLES SHALL BEGIN OR END AT JOINTS IN THE CLAY PIPE IN SUCH A MANNER WHICH WILL MAINTAIN THE FLEXIBILITY OF THE PIPE JOINT.

NOTE:
THE CONTRACTOR SHALL BE RESPONSIBLE FOR PRESERVING PROPERTY IRONS. THE CONTRACTOR SHALL BE REQUIRED TO RE-ESTABLISH ANY PROPERTY IRONS WHICH ARE DAMAGED OR DESTROYED BY HIS CONSTRUCTION OPERATIONS. SUCH IRONS SHALL BE RE ESTABLISHED BY A LICENSED LAND SURVEYOR OR A LICENSED PROFESSIONAL ENGINEER IN ACCORDANCE WITH STATE LAWS.



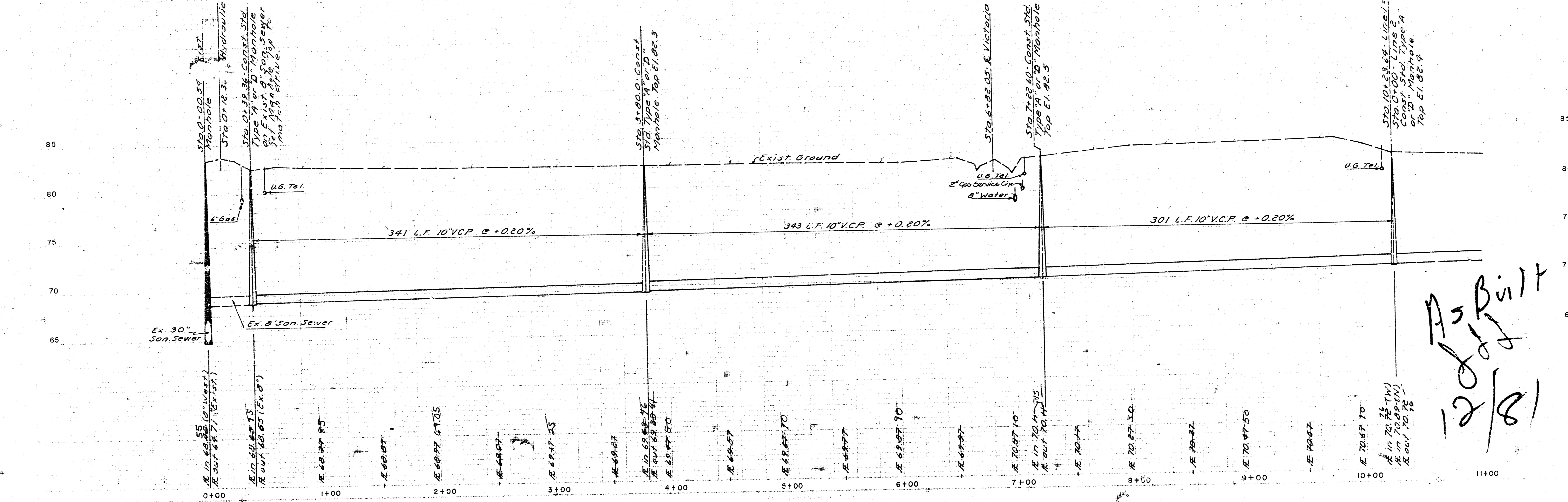
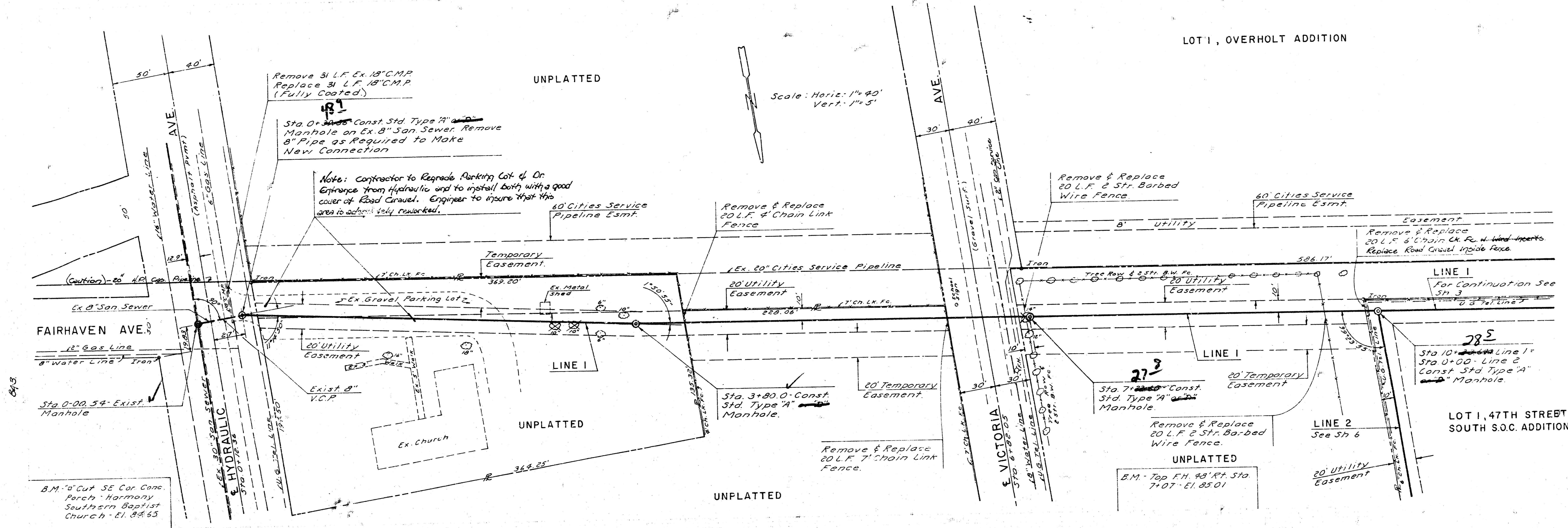
*As Built
JJB
12/81*

DATE

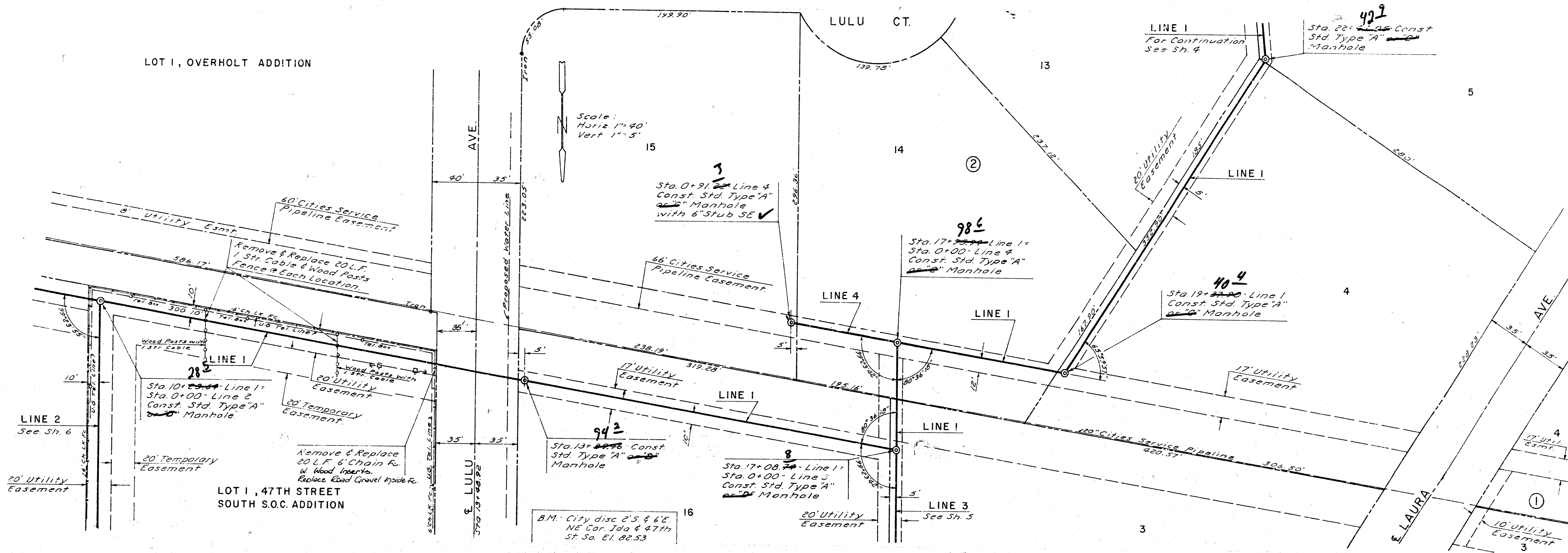
BAUGHMAN COMPANY, P.A.
SURVEYING & ENGINEERING
316/262-7271 • 320 LAURA • WICHITA, KANSAS 67211

LOT 1, OVERHOLT ADDITION

Scale: Horiz: 1"=40'
Vert: 1"=5'



As Built
12/81



Scale:
 Horiz 1"=40'
 Vert 1"=5'

Sta. 0+91.22 Line 4
 Const. Std. Type "A"
 Manhole
 with 6" Stub SE

Sta. 17+27.77 Line 1
 Sta. 0+00 Line 4
 Const. Std. Type "A"
 Manhole

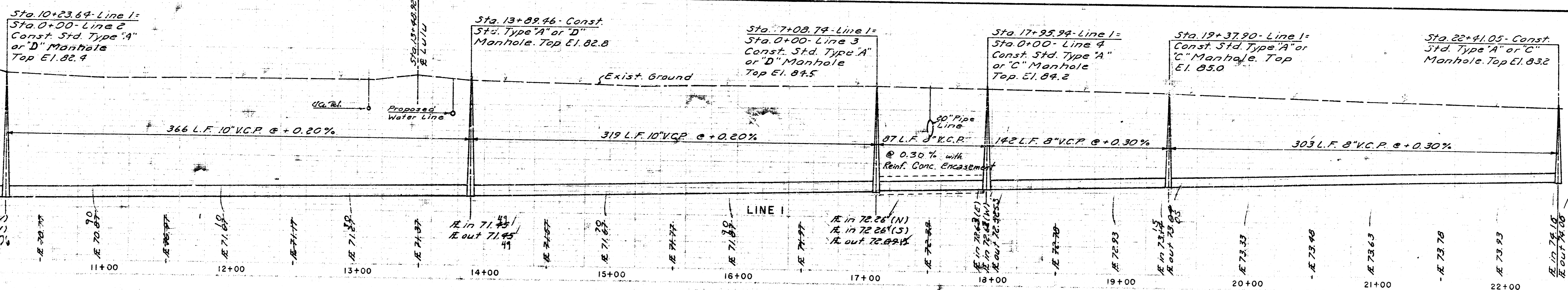
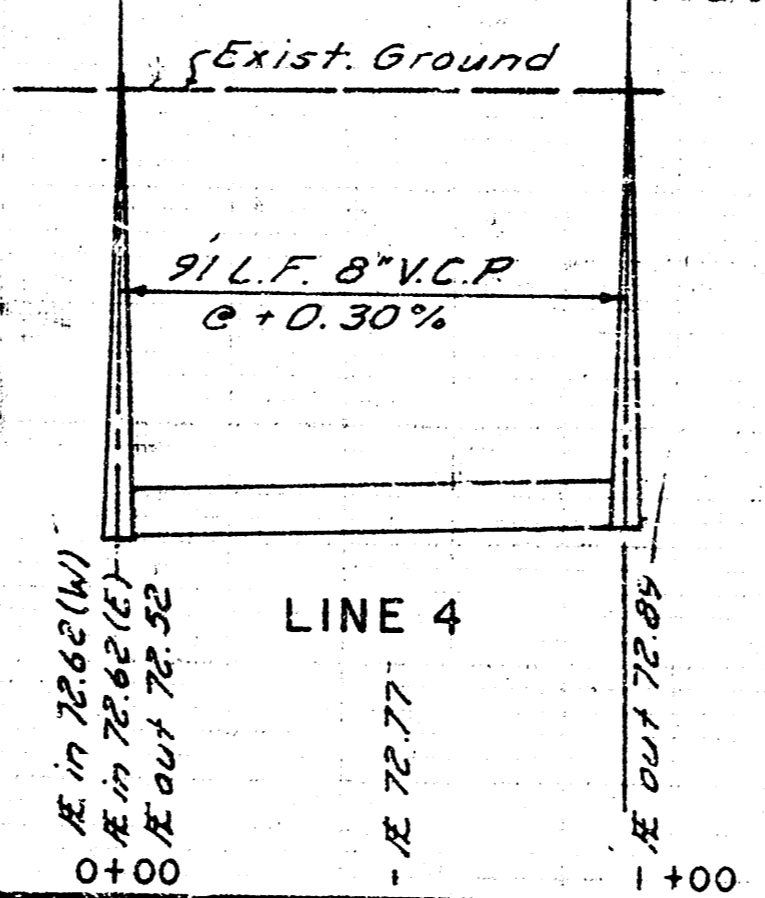
Sta. 19+27.90 Line 1
 Const. Std. Type "A"
 Manhole

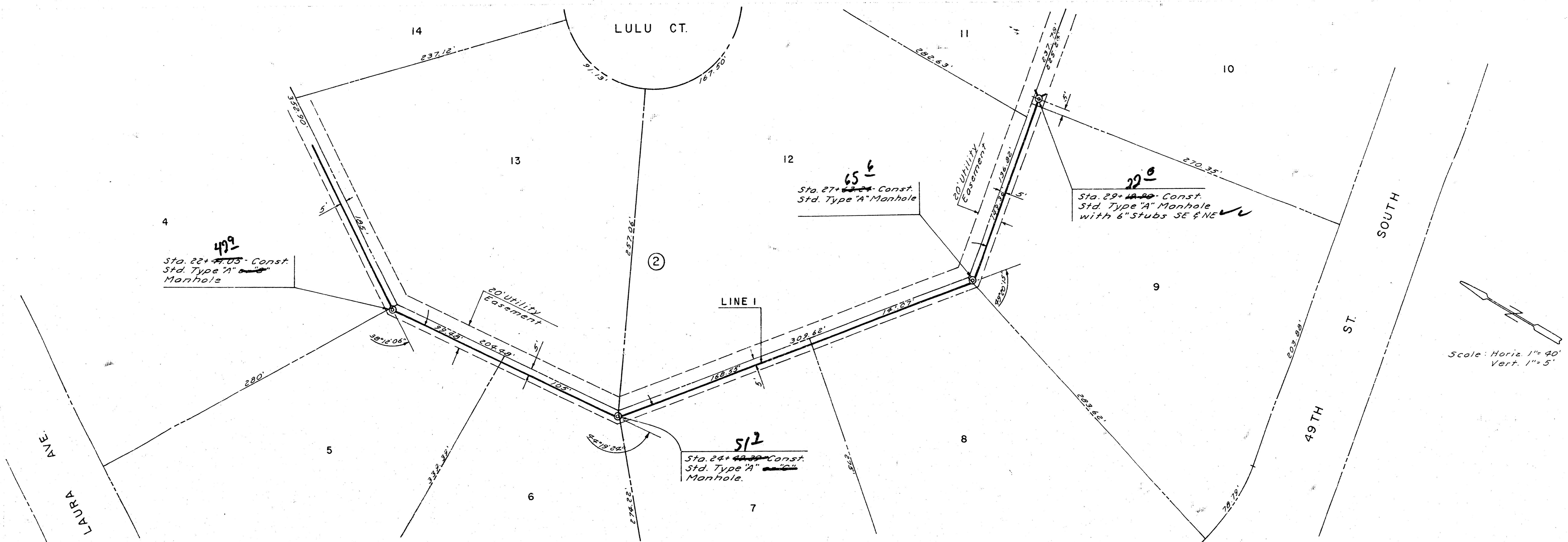
Sta. 13+89.46 Const.
 Std. Type "A"
 Manhole

Sta. 17+08.79 Line 1
 Sta. 0+00 Line 3
 Const. Std. Type "A"
 Manhole

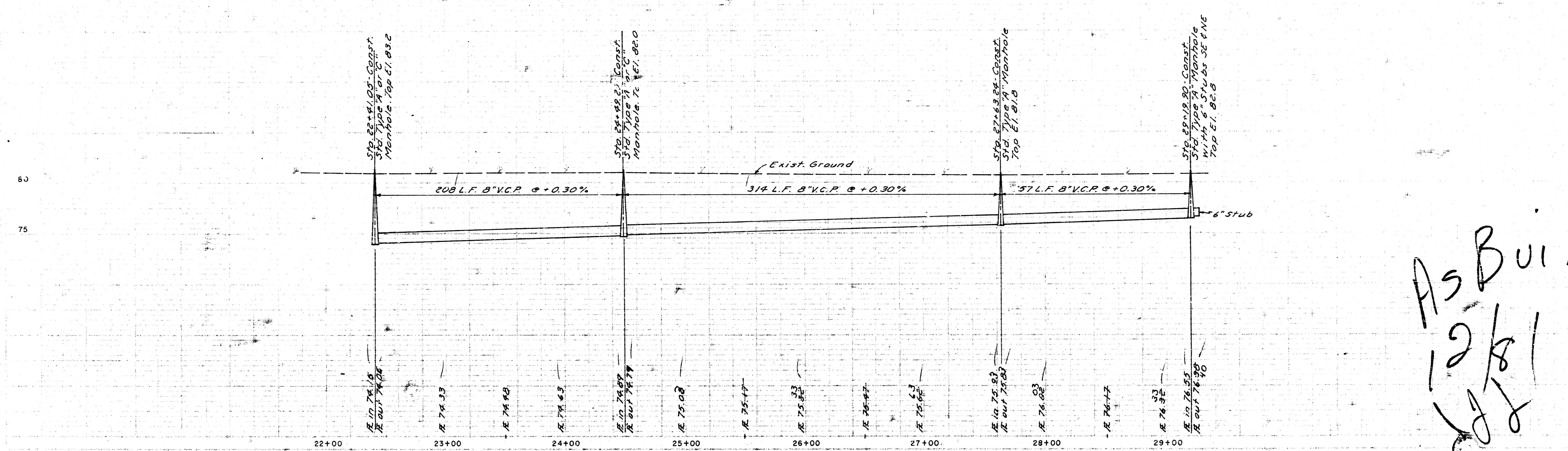
Sta. 0+91.22 Const.
 Std. Type "A" or "C"
 Manhole with 6"
 Stub SE. Top El. 83.6

Sta. 0+00 Line 4
 Sta. 17+95.94 Line 1
 Const. Std. Type "A"
 or "C" Manhole.
 Top El. 84.2

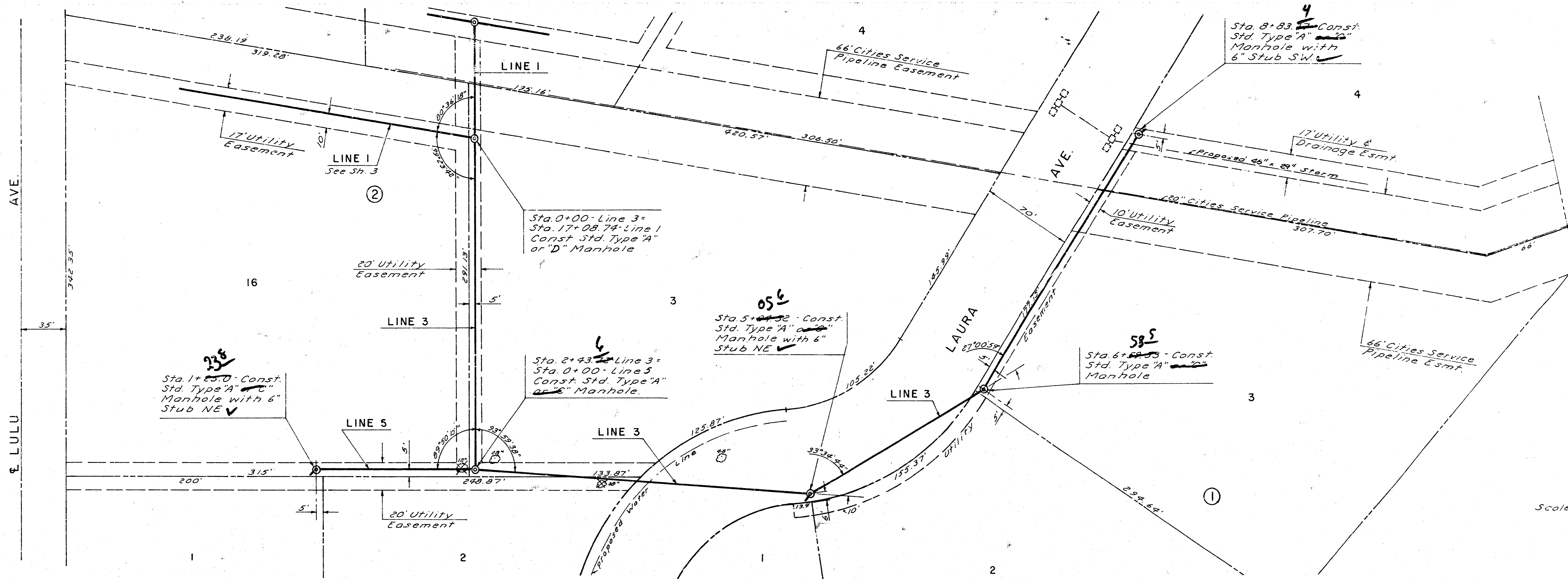




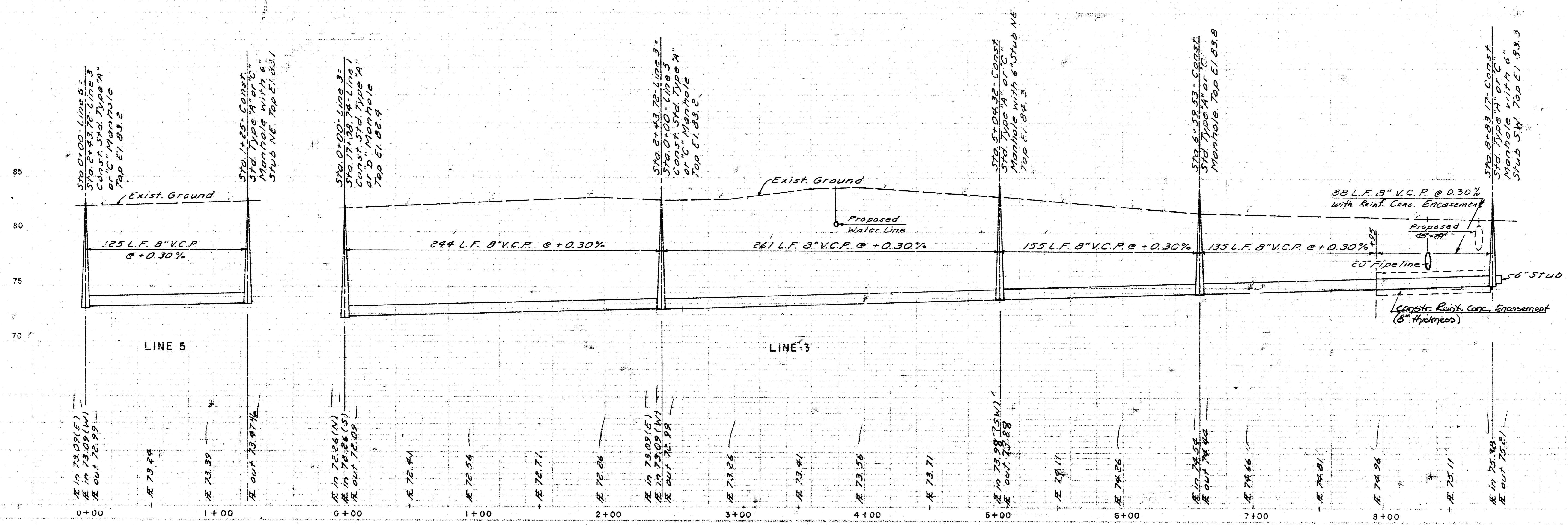
Scale: Horiz. 1" = 90'
Vert. 1" = 5'



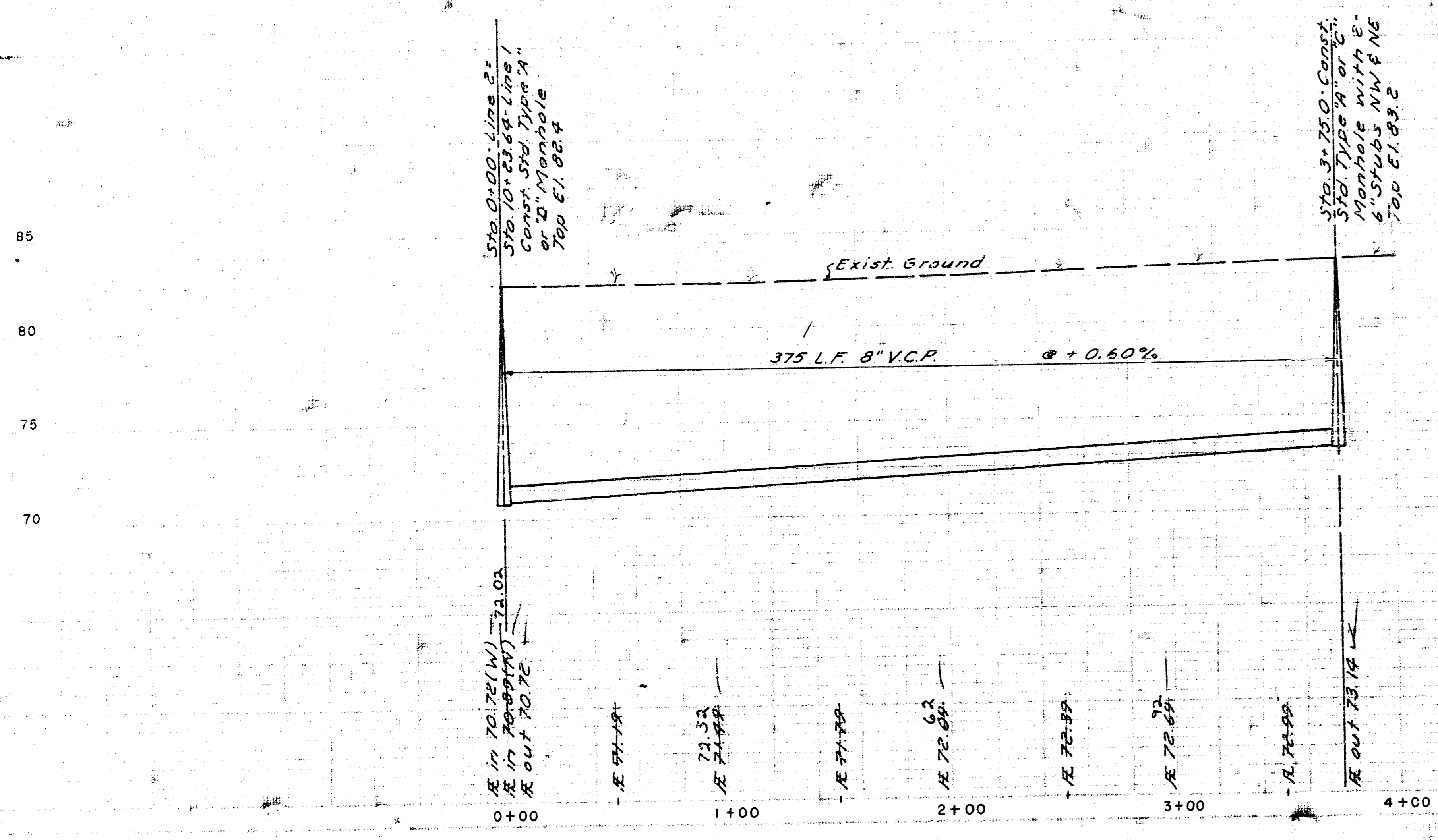
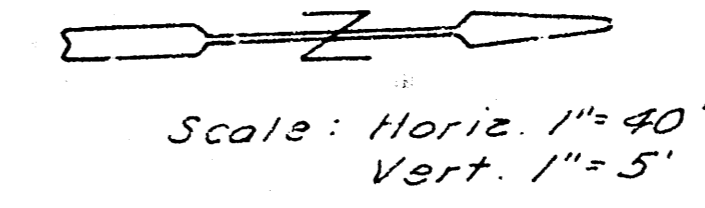
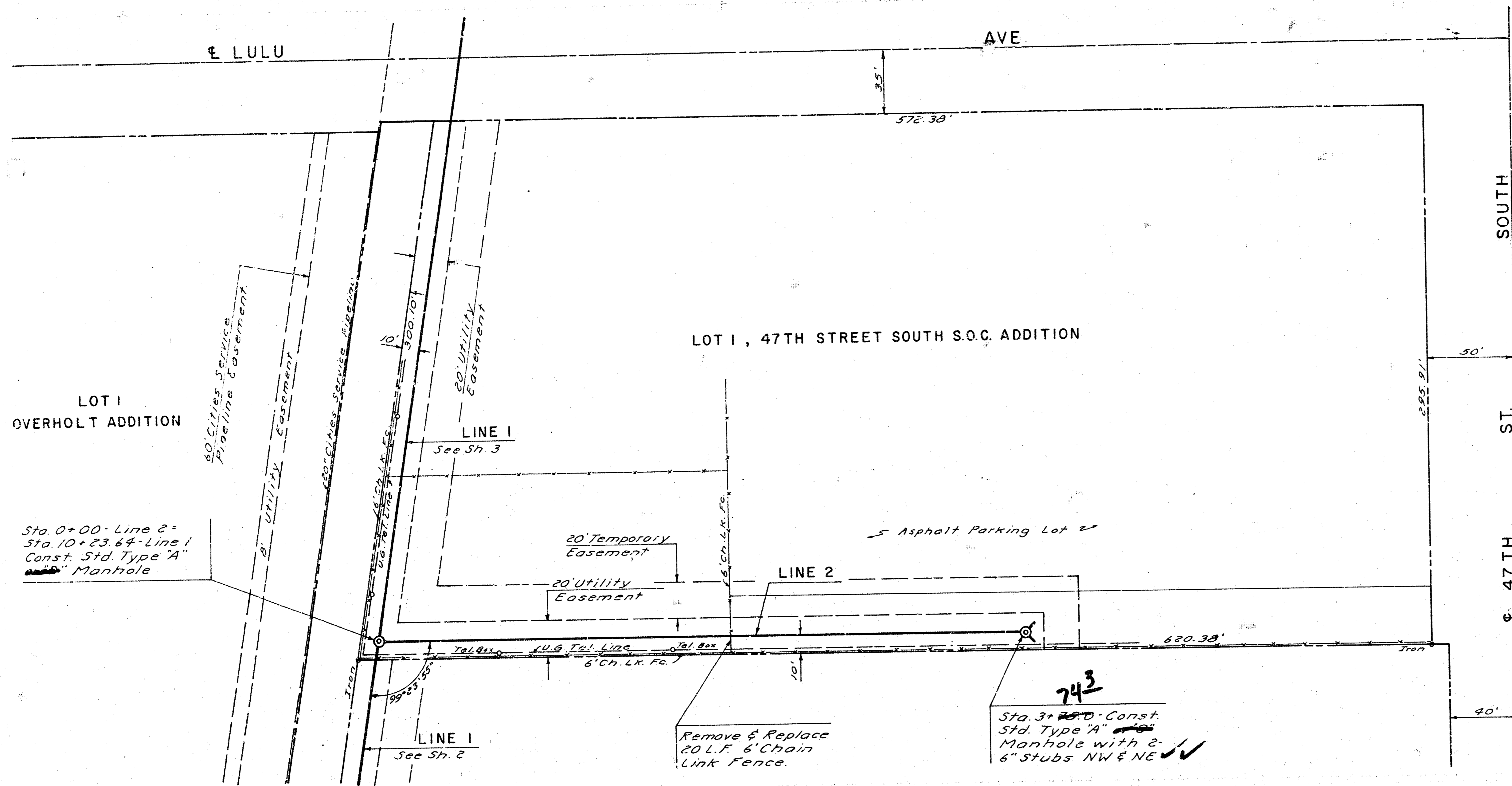
As Built
12/8/1



Scale: Horiz. 1" = 40'
Vert. 1" = 5'



10/15



As Built
 12/81

85
 80
 75
 70

10 2 4 6 8 10 12