

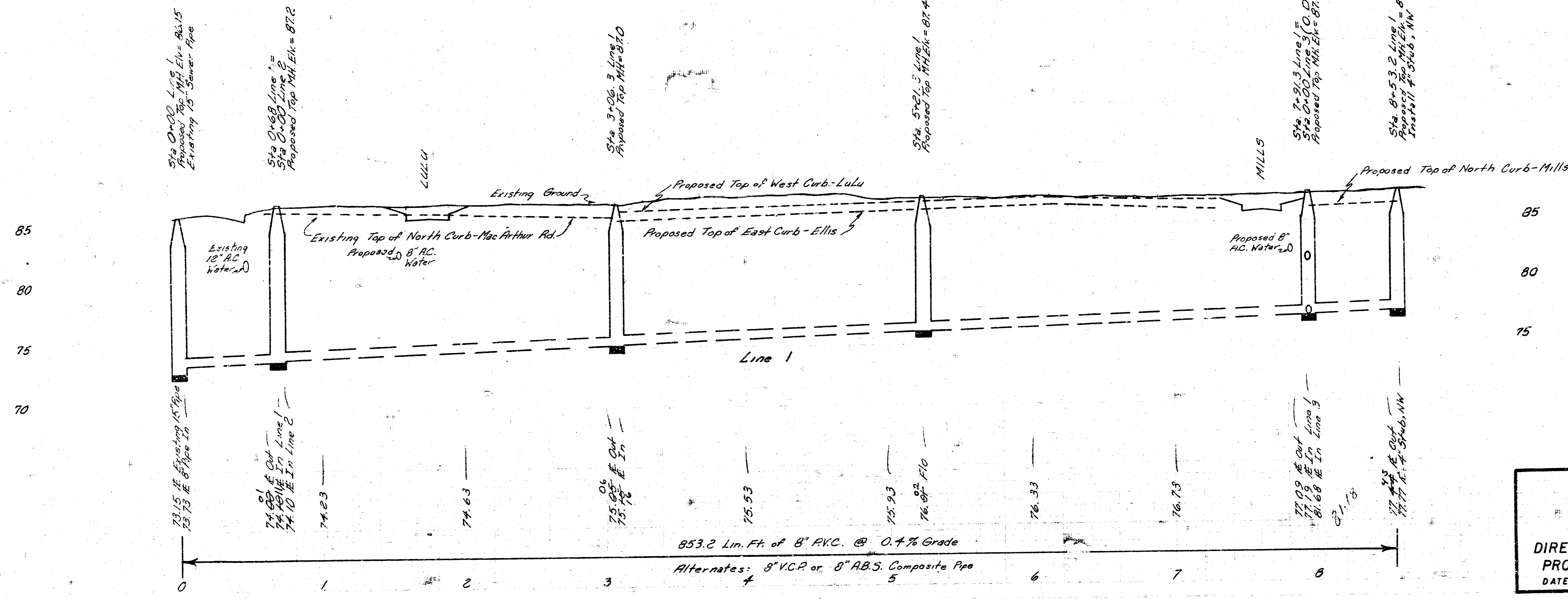
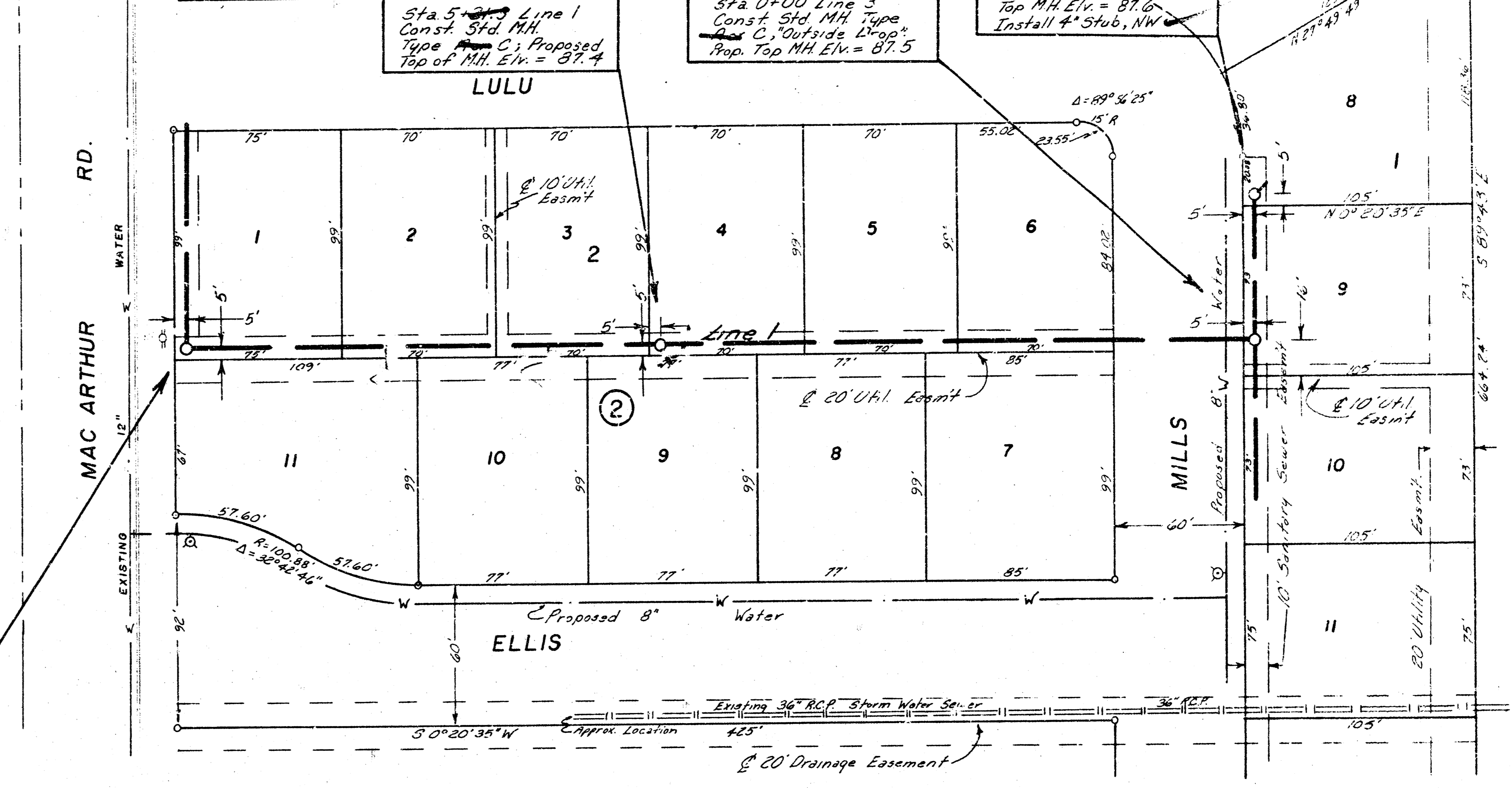
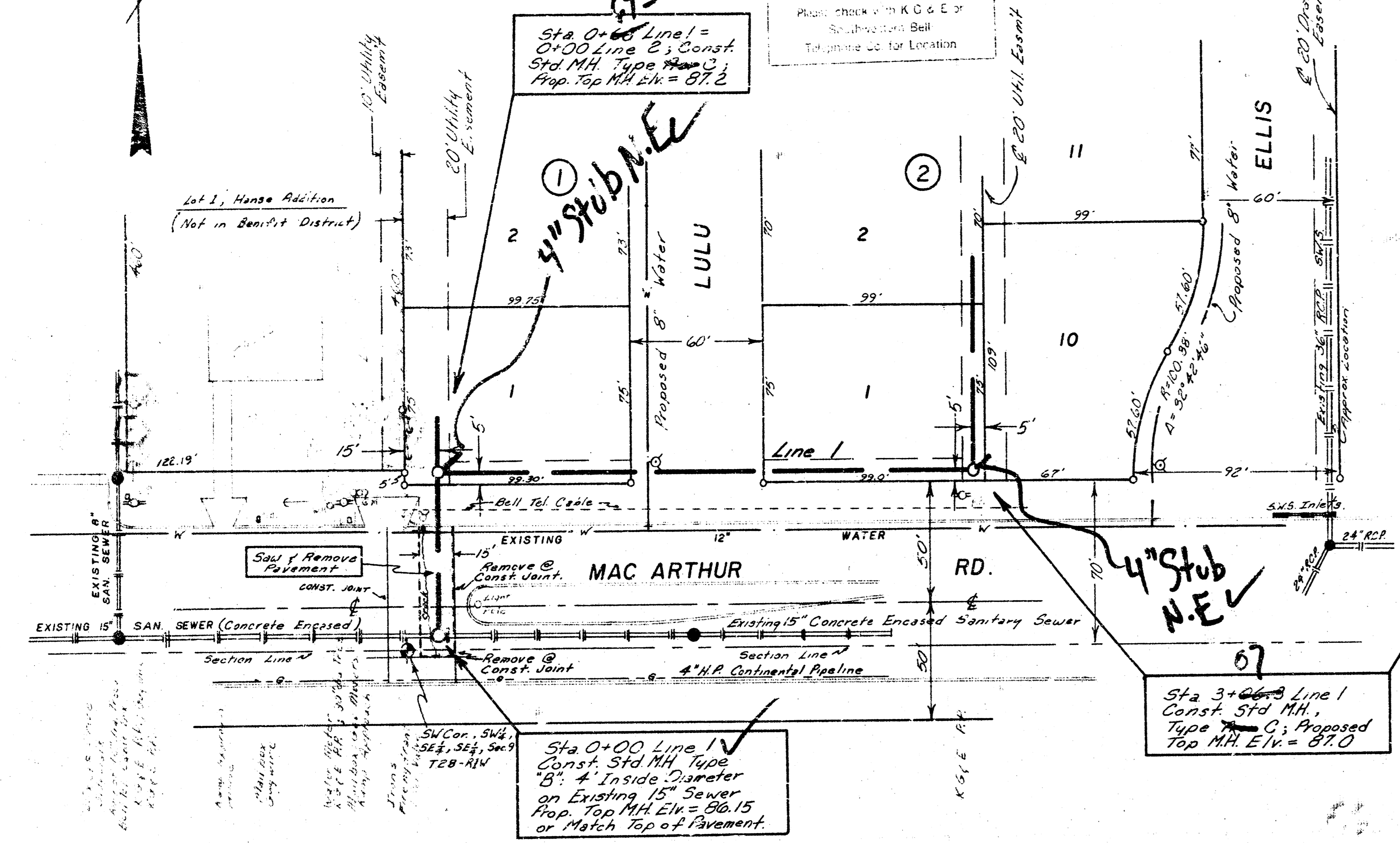
Scale:
 1" = 40' Plan
 1/8" = 40' Horiz. Profile
 1" = 5' Vert.

Bench Marks:
 56.195 - 62" Nail on N. Face of Power Pole,
 W. R. Ellis and 190 ± N. of @ A17A.
 87.90 - 109 ± W. of @ Ellis, N. Side of
 Mac Arthur Rd. RR. Spk. on N. Face. h.g. & E. Power Pole.

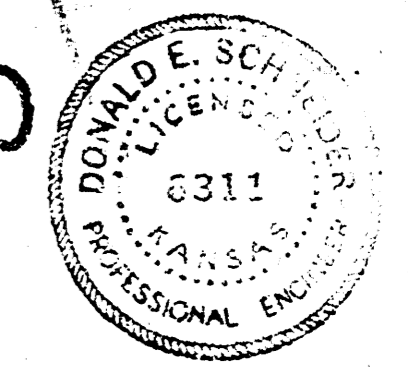
CAUTION
UNDERGROUND
UTILITIES
 Please Check with K.C. & E. of
 Substation Bell
 for precise location.

THE CONTRACTOR SHALL BE RESPONSIBLE
 FOR PRESERVING PROPERTY IRONS. THE
 CONTRACTOR SHALL BE REQUIRED TO RE-
 INSTALL ANY PROPERTY IRONS WHICH
 ARE DAMAGED OR DESTROYED BY HIS CON-
 STRUCTION OPERATIONS. SUCH IRONS SHALL
 BE REINSTALLED BY A LICENSED LAND
 SURVEYOR OR A LICENSED PROFESSIONAL
 ENGINEER IN ACCORDANCE WITH STATE LAWS.

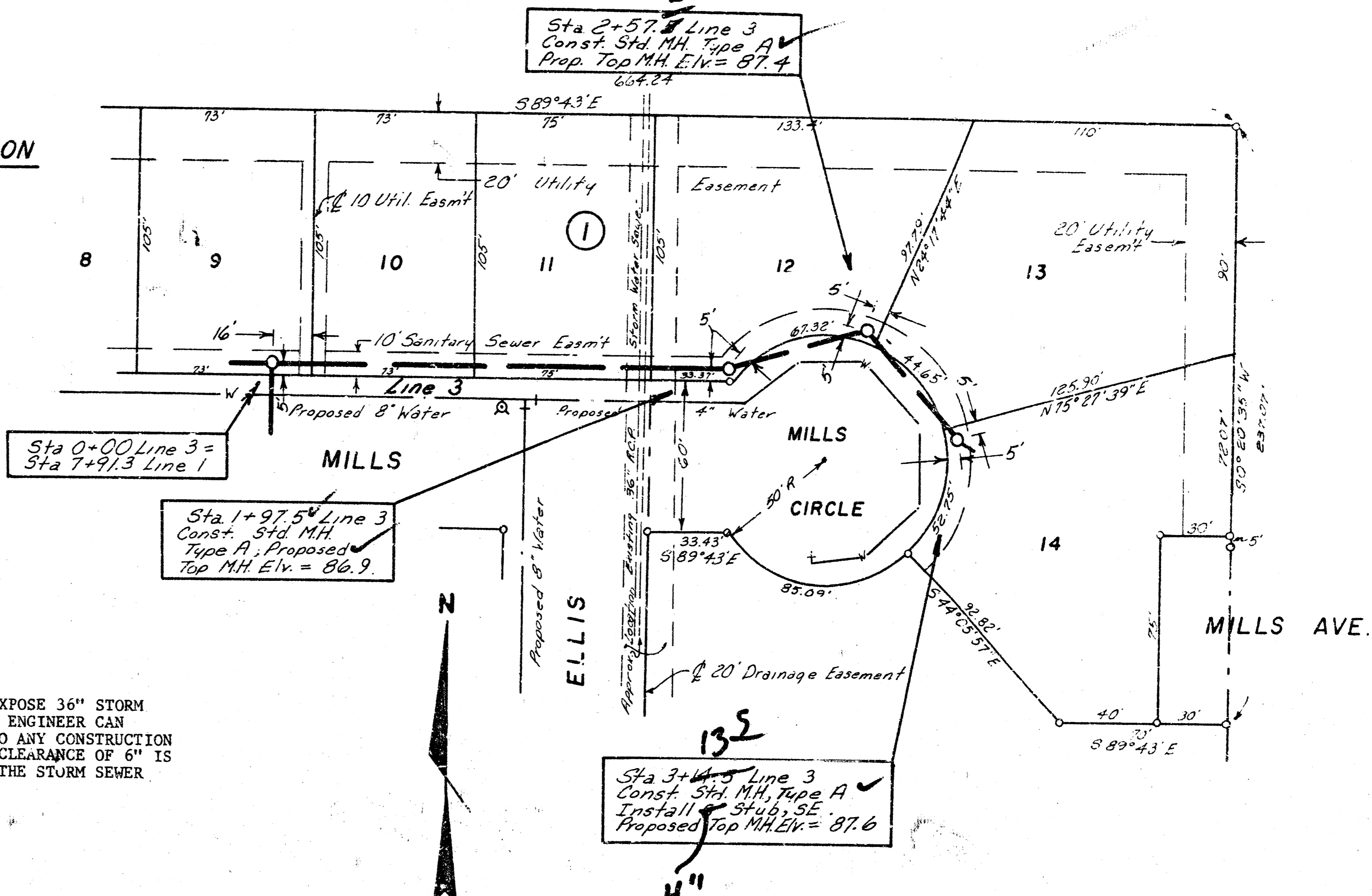
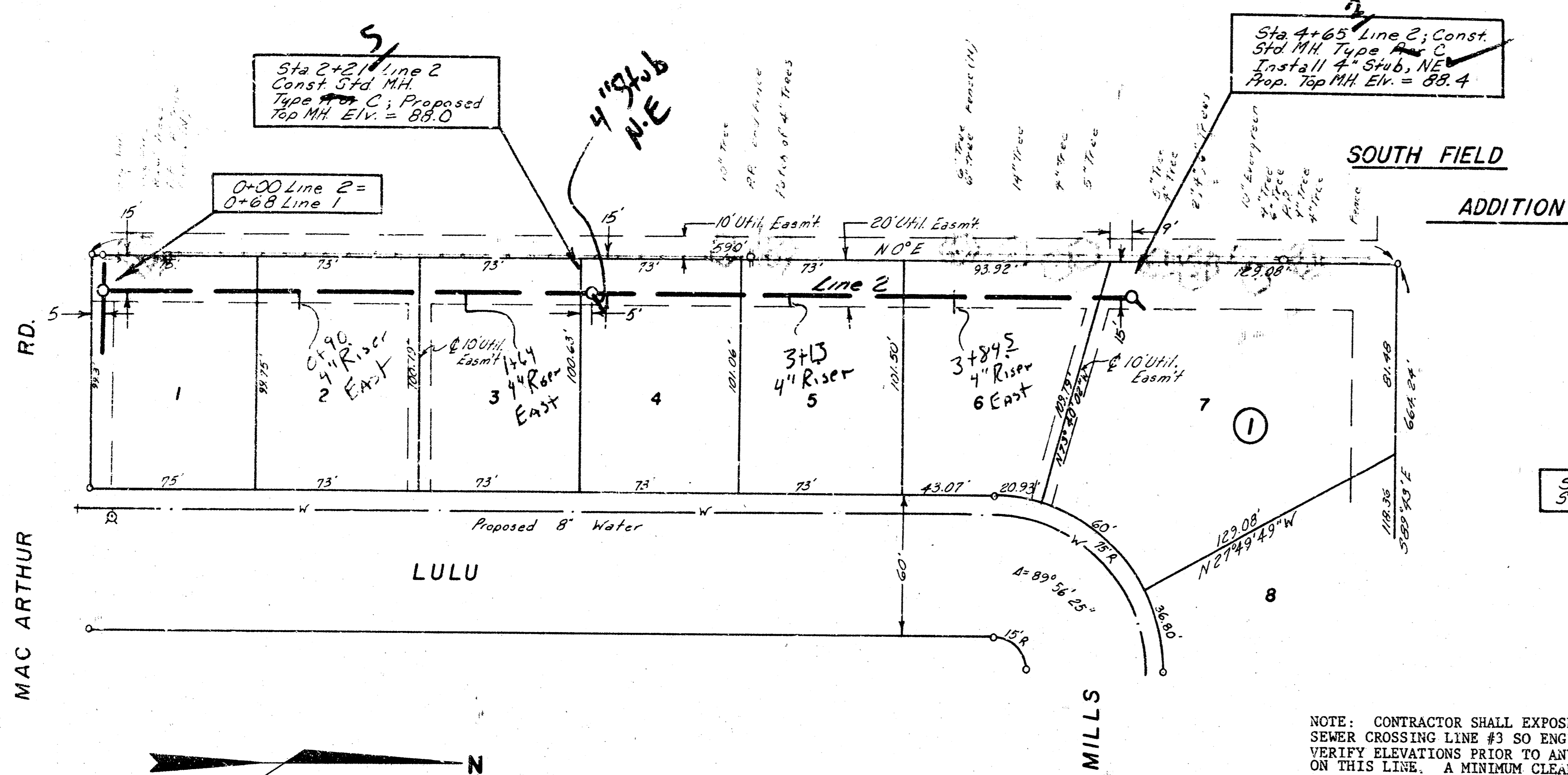
SOUTH FIELD
ADDITION



Handwritten signature and date:
 12/81

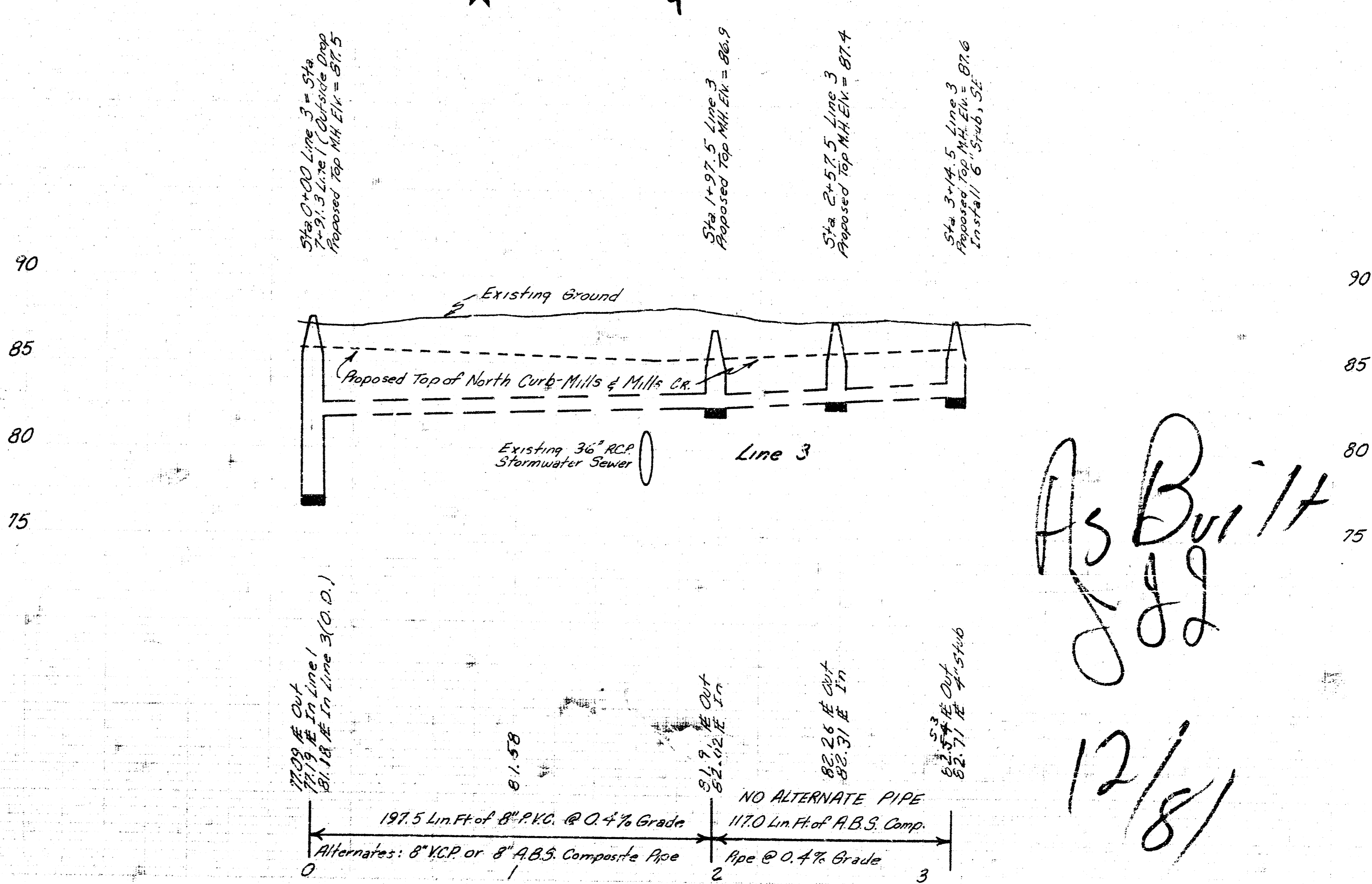
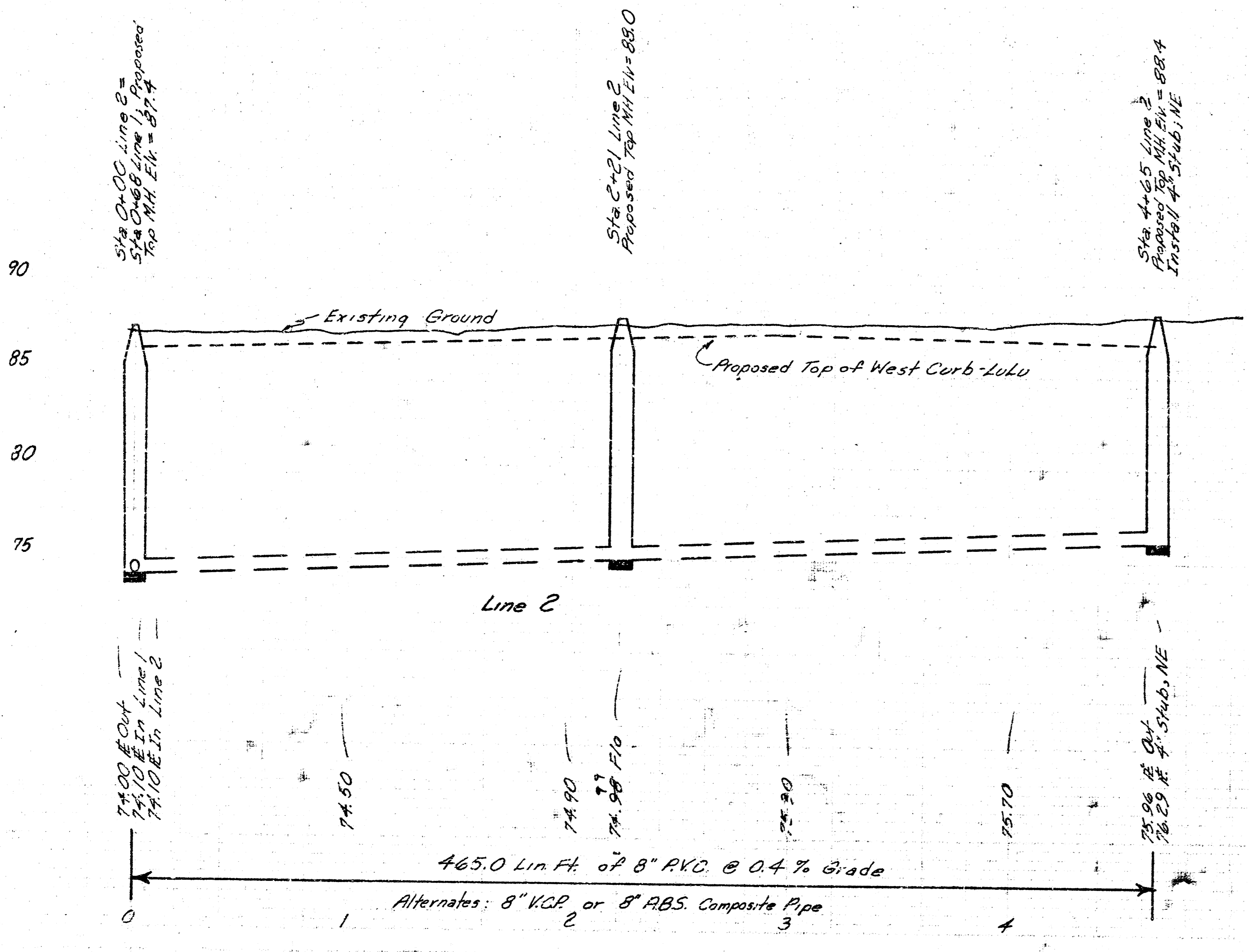


LAT. 62, MAIN 1, S. W. I.
CITY OF WICHITA, KANSAS
R. W. BRUGGEMAN
DIRECTOR OF ENGINEERING / CITY ENGINEER
PROJ. NO. 46876-245-81121-000-000-001
 DATE _____ SHEET 1 of 2



NOTE: CONTRACTOR SHALL EXPOSE 36" STORM SEWER CROSSING LINE #3 SO ENGINEER CAN VERIFY ELEVATIONS PRIOR TO ANY CONSTRUCTION ON THIS LINE. A MINIMUM CLEARANCE OF 6" IS TO BE MAINTAINED BETWEEN THE STORM SEWER AND THE SANITARY SEWER.

SCALE: 1" = 40' Plan
 1" = 40' Horiz.
 1" = 5' Profile



As Built
 12/81