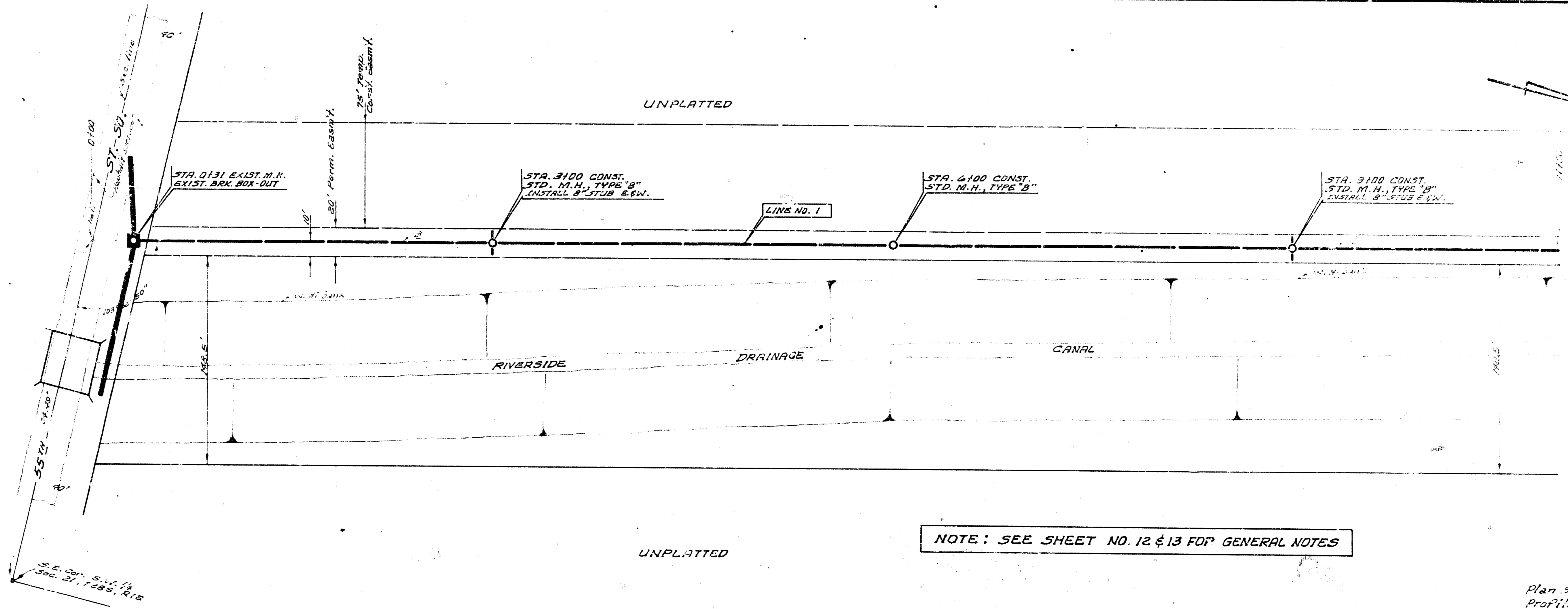


B.E. Smith
 B. E. SMITH JULY 16, 1969
 CITY ENGINEER

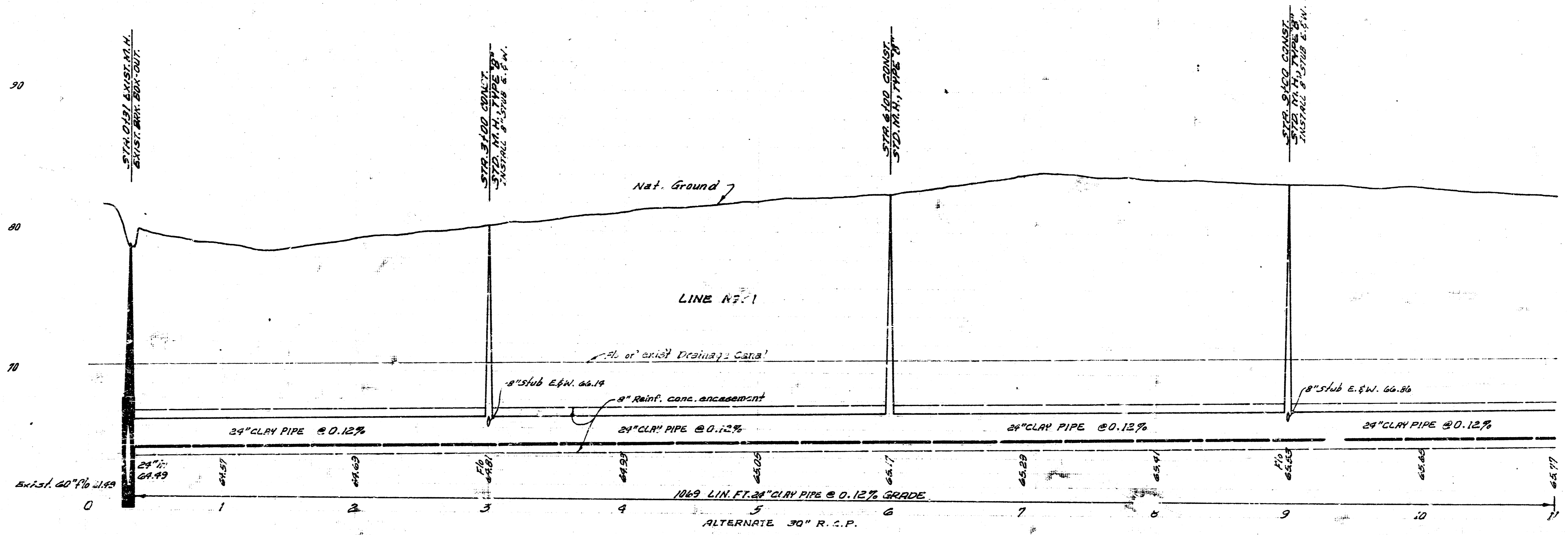


SUB. 2, S.W. INTERCEPTOR
 CITY OF WICHITA, KANSAS—B. E. SMITH, CITY ENGINEER
 PROJECT NO. DBKM568083

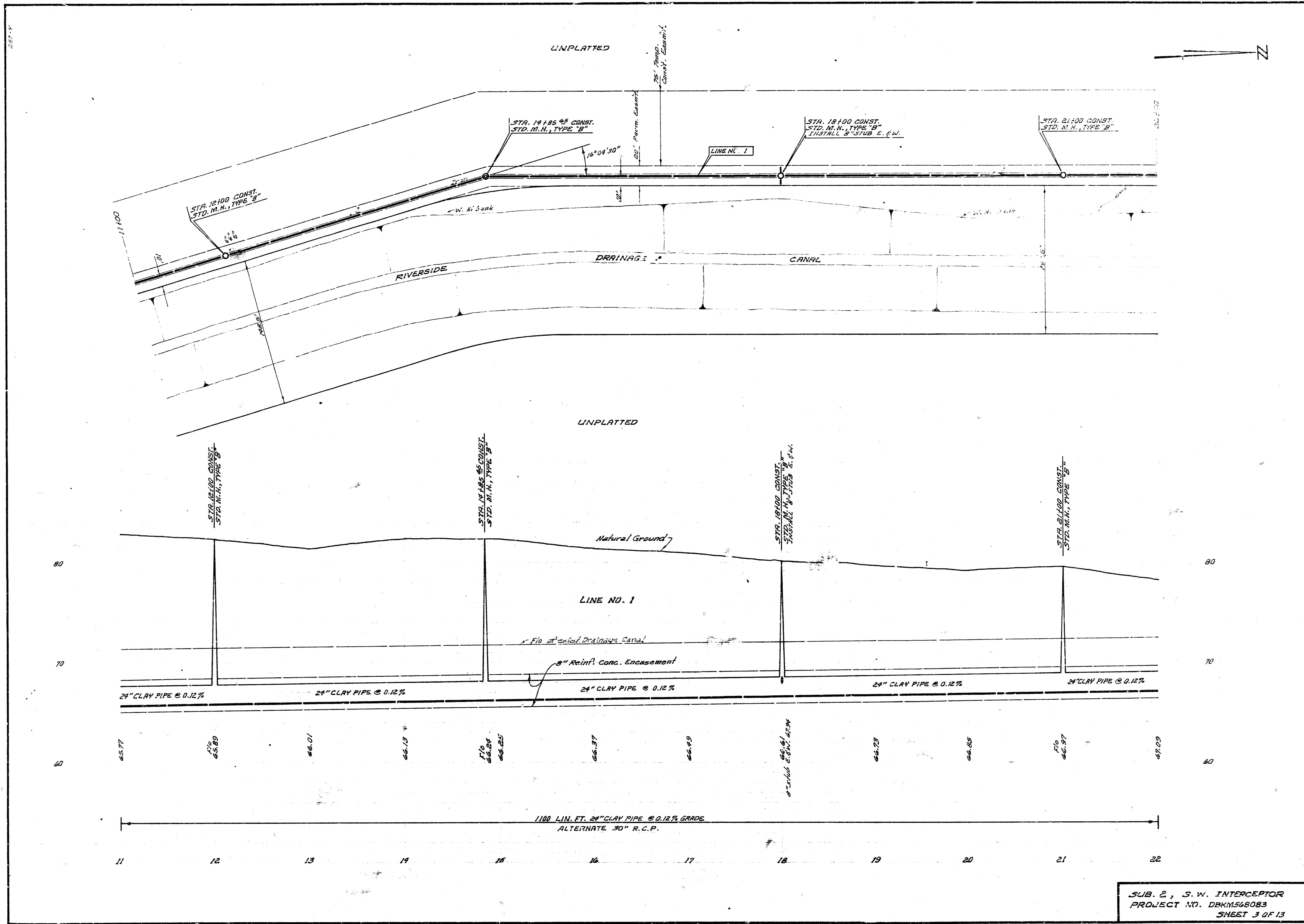
G. Young
D. Chamer

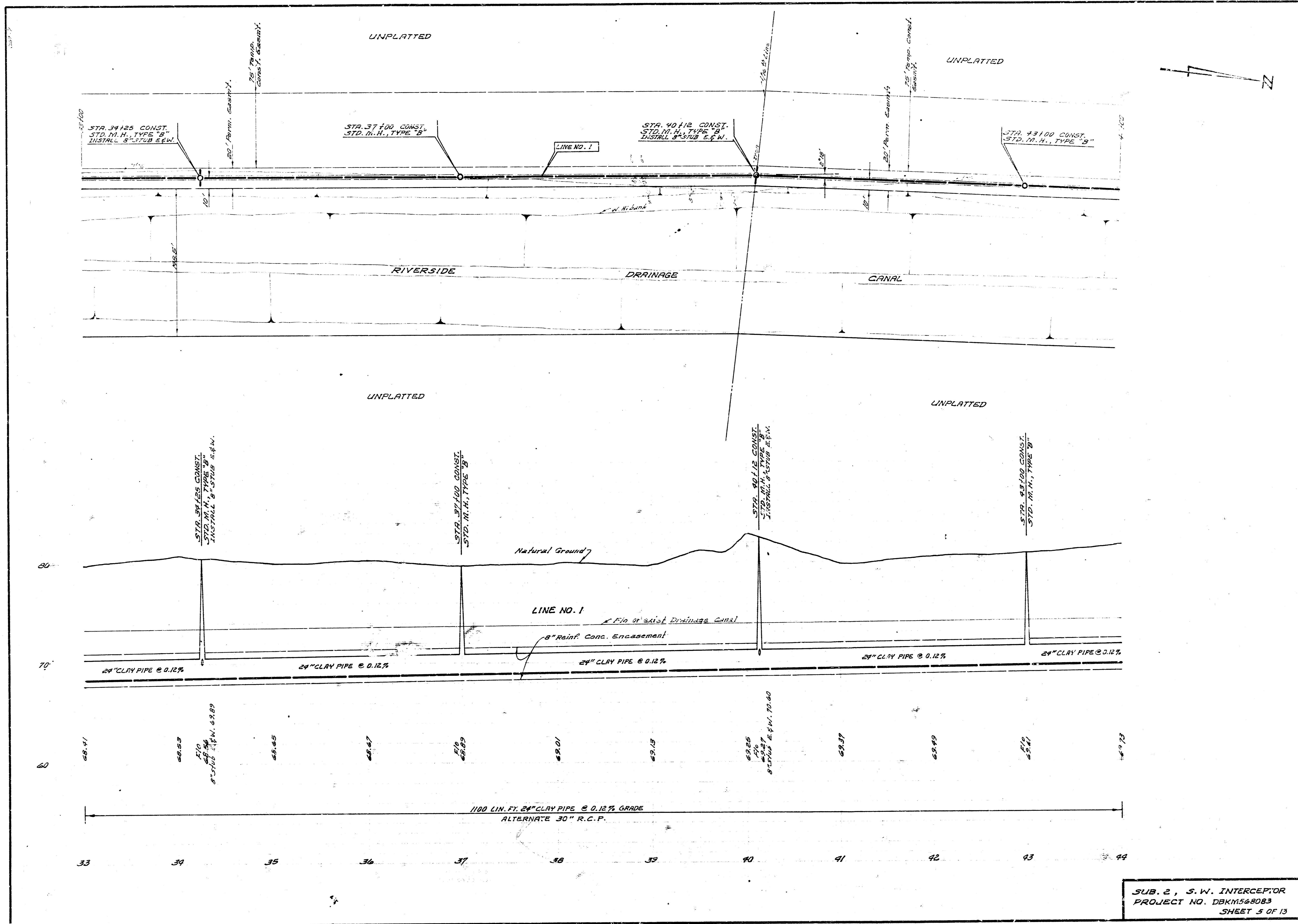


B.M. 81.795 "A" Top E. and So. hubward Conc. bridge on 55th St. So. @ Riverside Drainage Canal

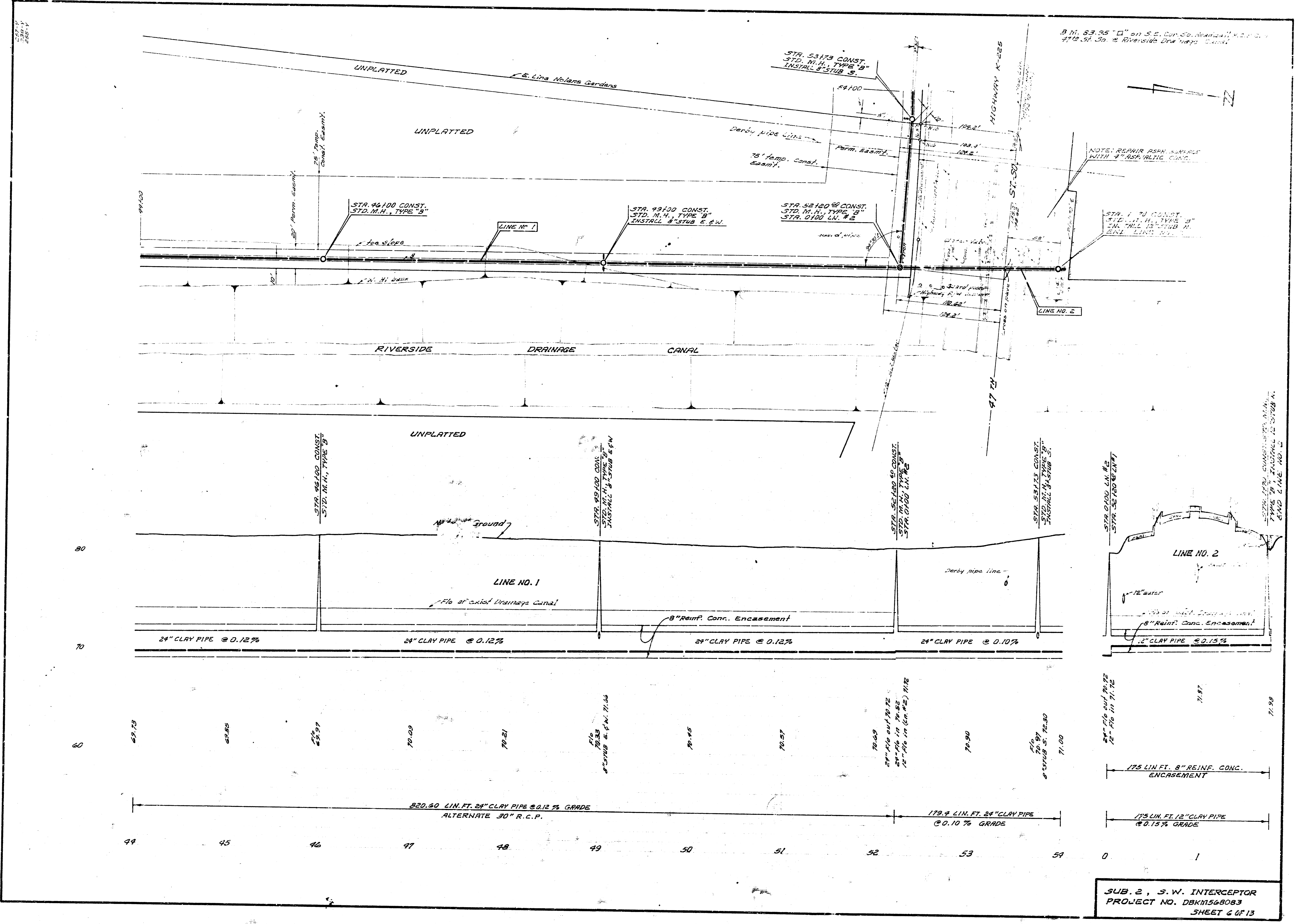


SUB. 2, S.W. INTERCEPTOR
PROJECT NO. DBK1568083
SHEET 2 OF 13



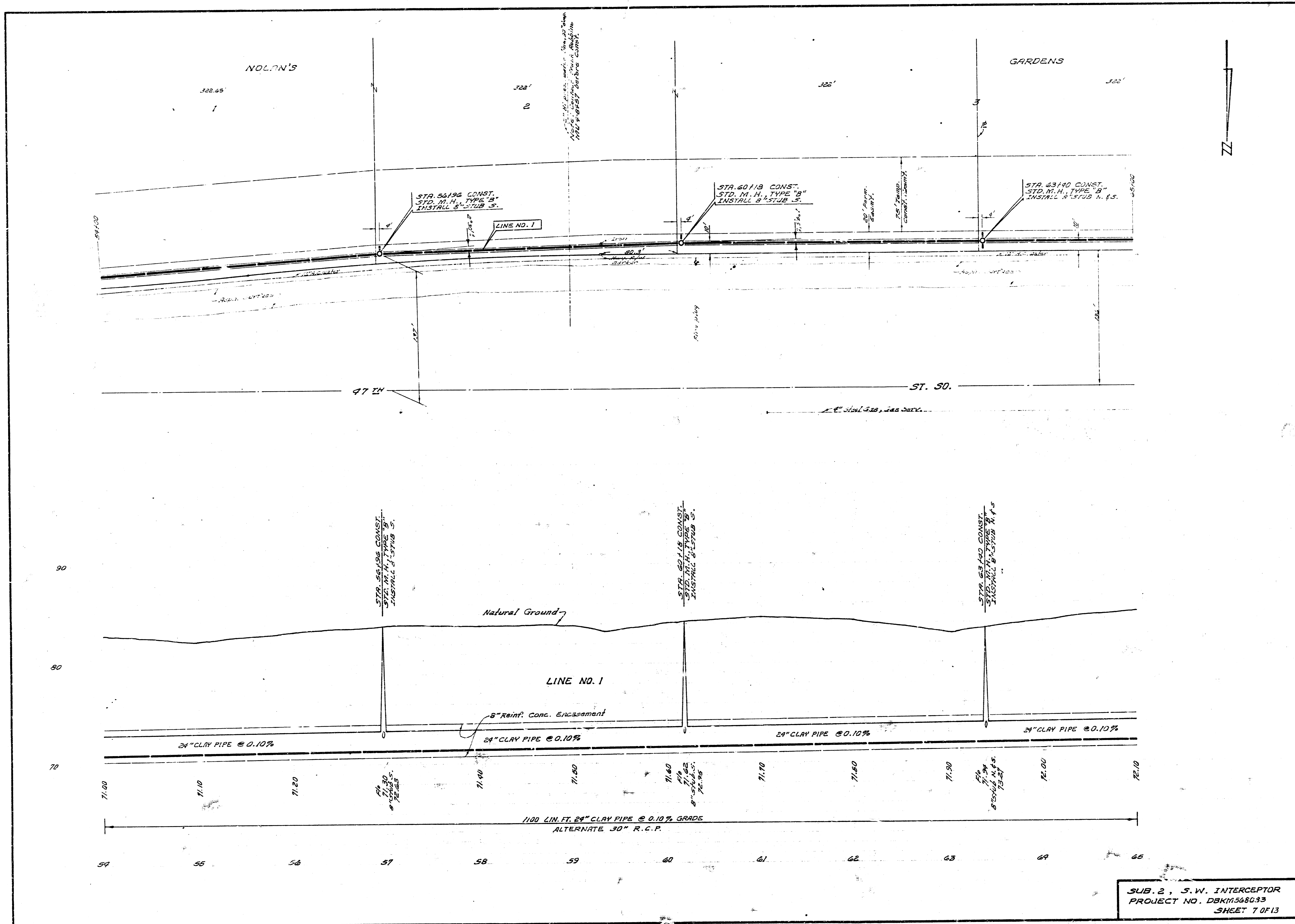


SUB. 2, S.W. INTERCEPTOR
 PROJECT NO. DBKM5&8083
 SHEET 5 OF 13

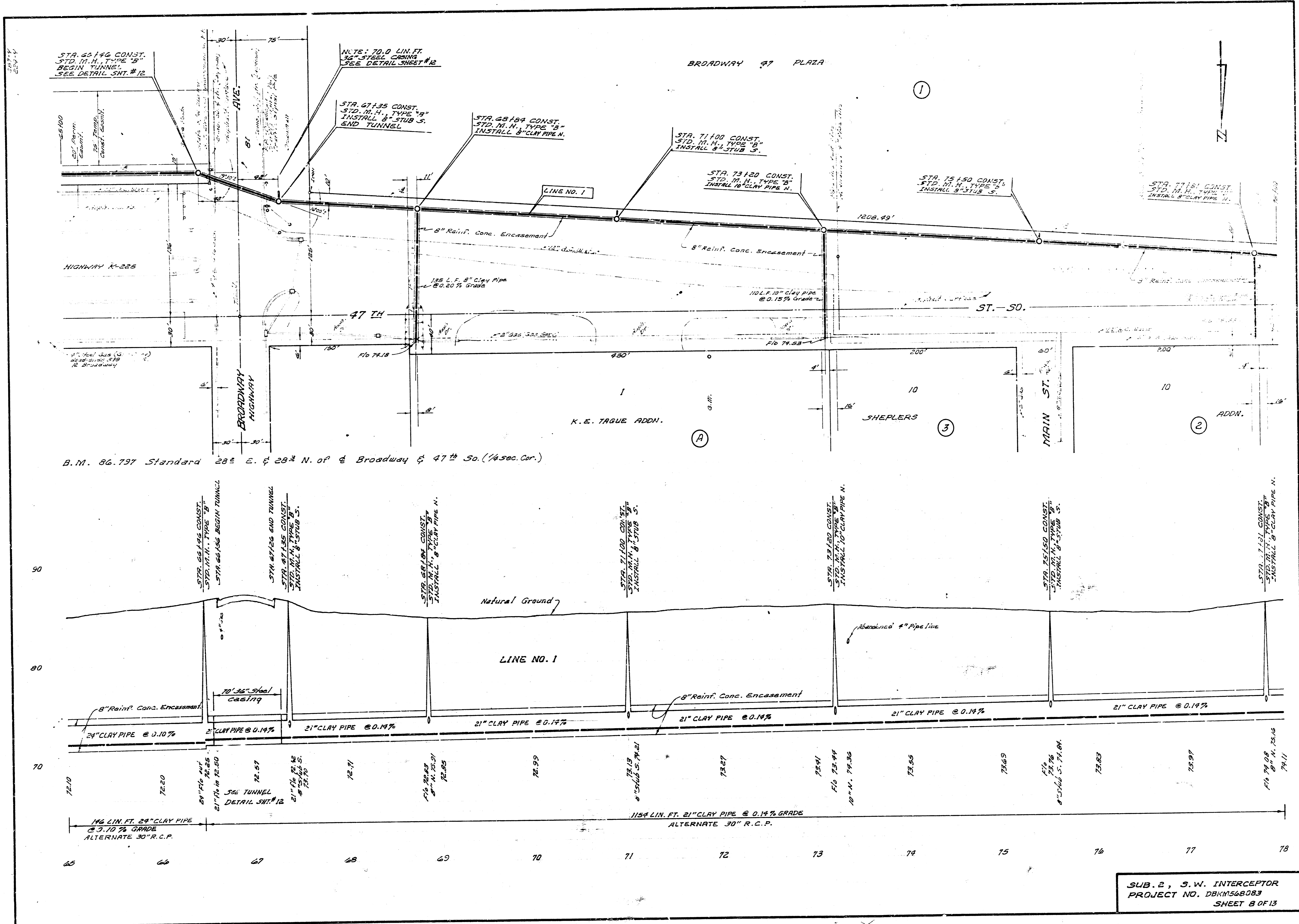


B.M. 53.95 "□" on S.E. Cor. of Abingdon, N.E. 1/4, Sec. 17, T. 30. S., R. 10. E., Riverside Drainage Canal

SUB. 2, S.W. INTERCEPTOR
 PROJECT NO. DBK1548083
 SHEET 6 OF 13

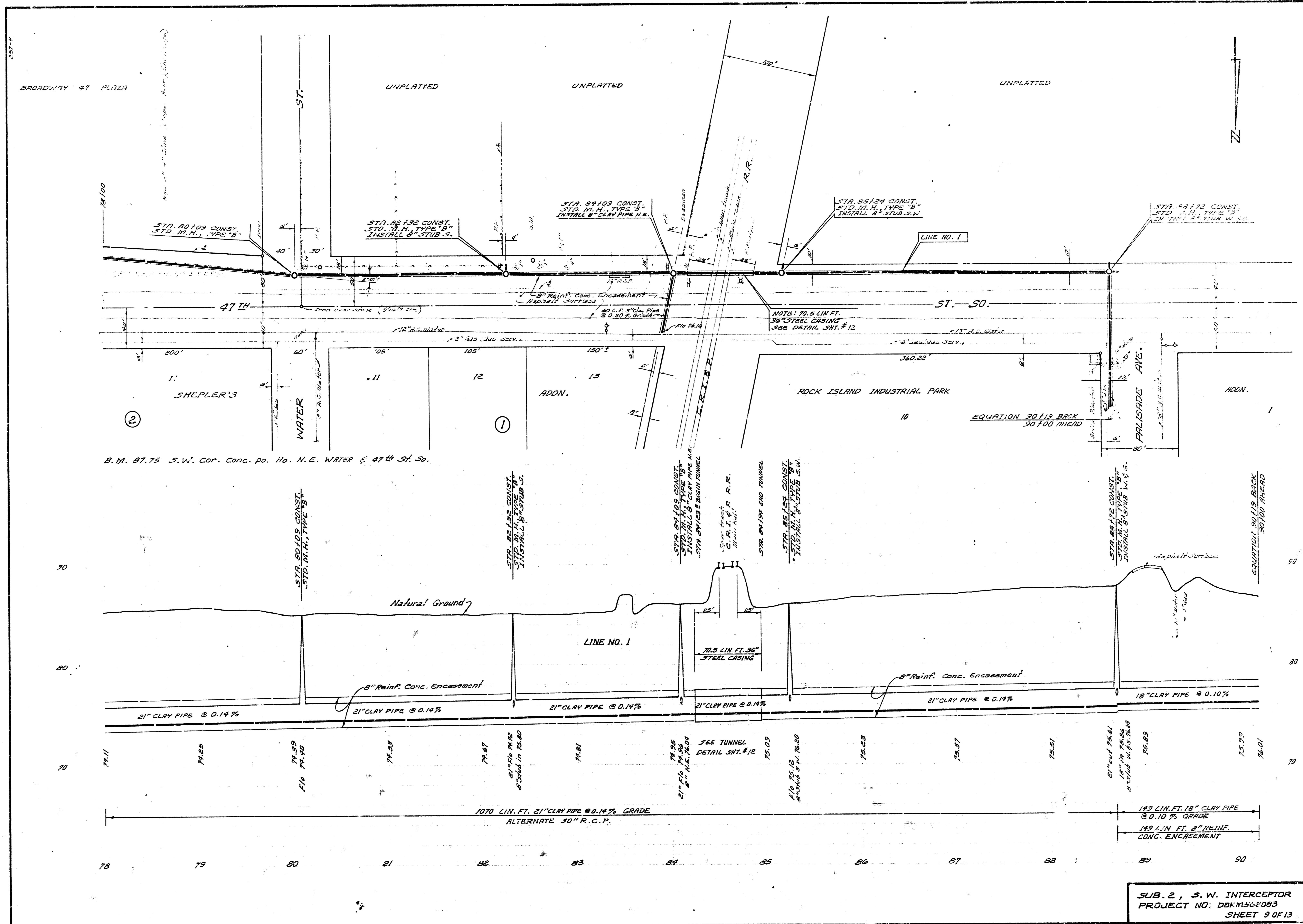


SUB. 2, S.W. INTERCEPTOR
 PROJECT NO. DBKM568033
 SHEET 7 OF 13

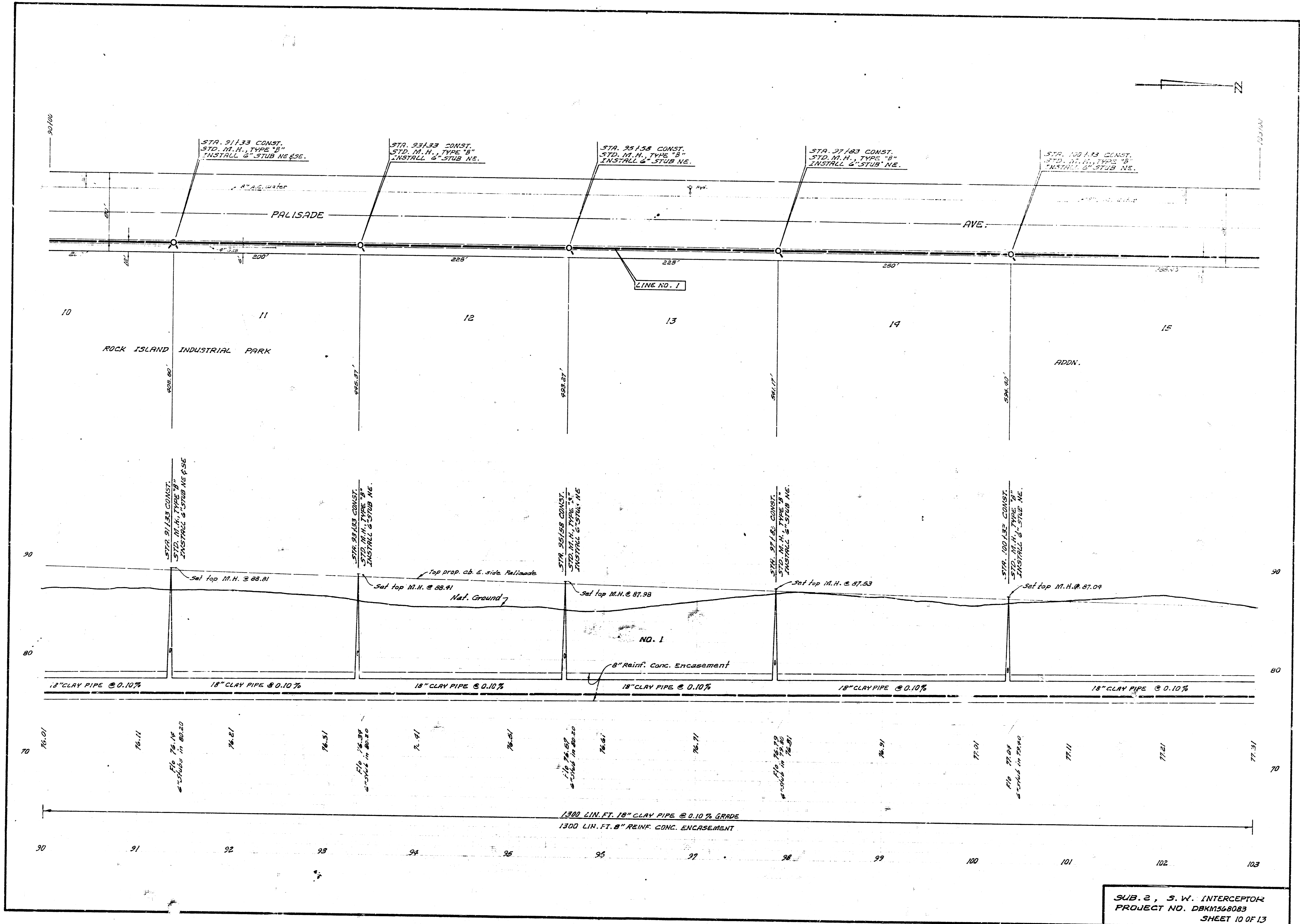


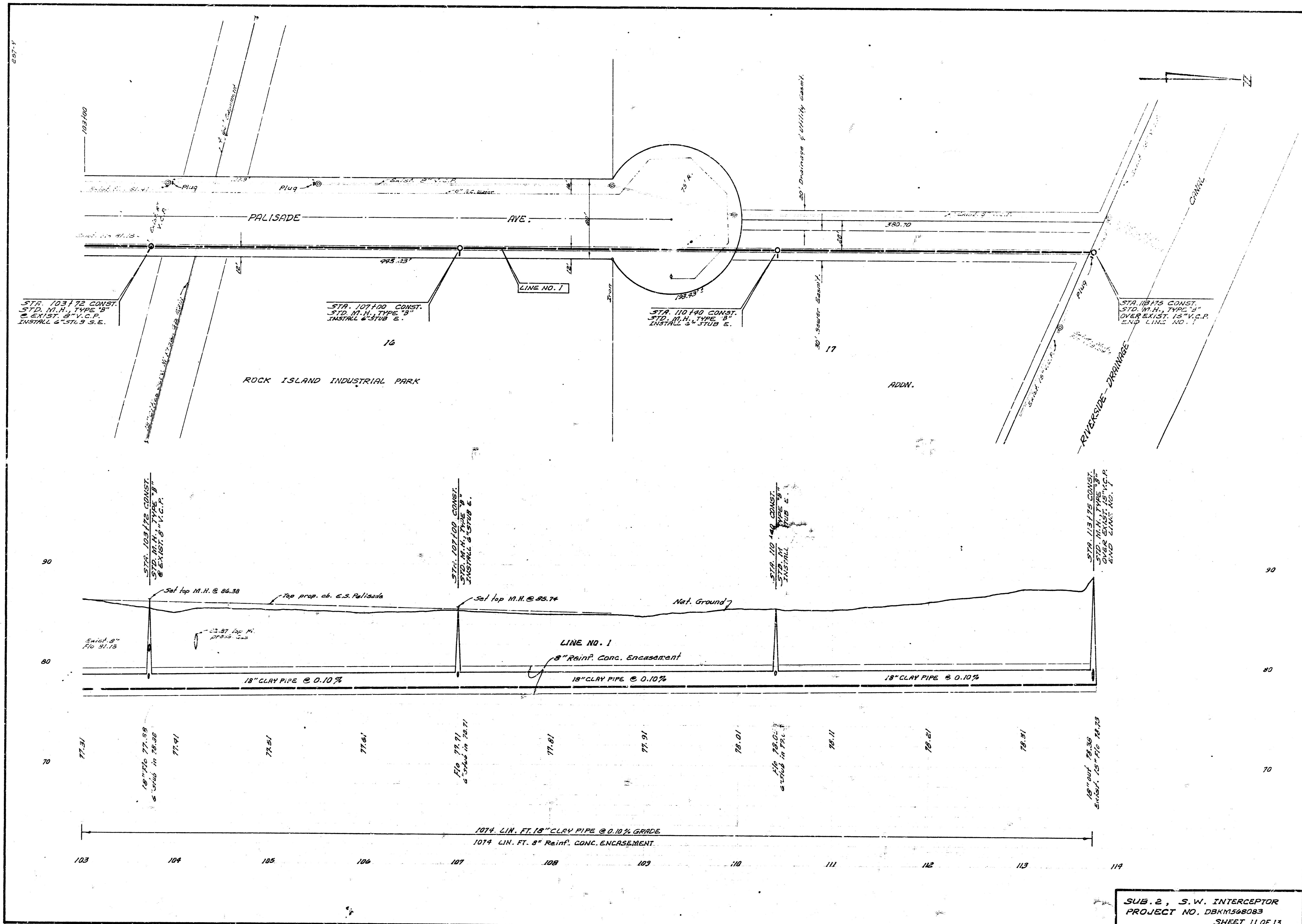
B.M. 86.737 Standard 28 E. of 28 N. of Broadway & 47th So. (1/4 sec. Cor.)

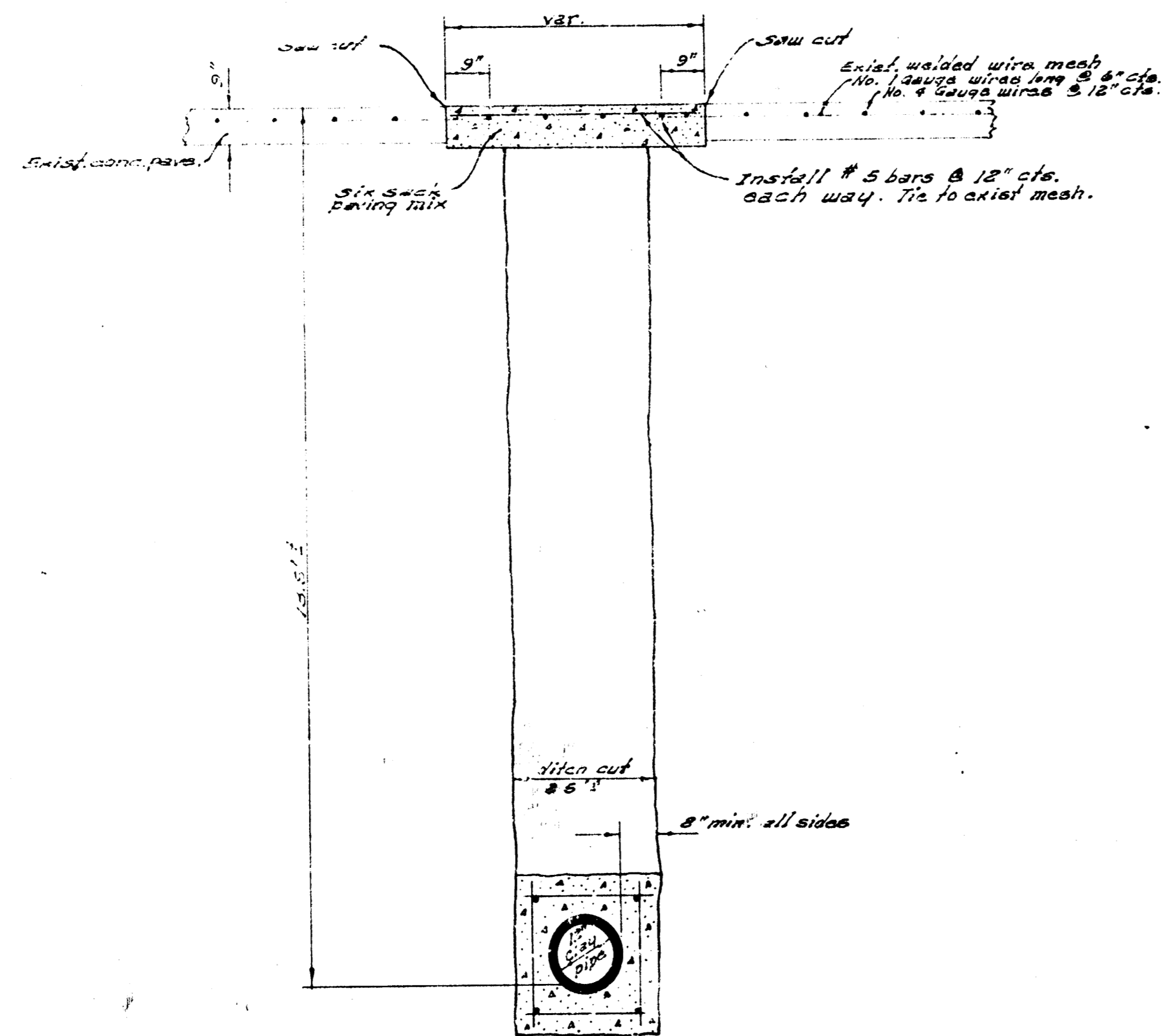
SUB. 2, S.W. INTERCEPTOR
PROJECT NO. DBKM56B083
SHEET 8 OF 13



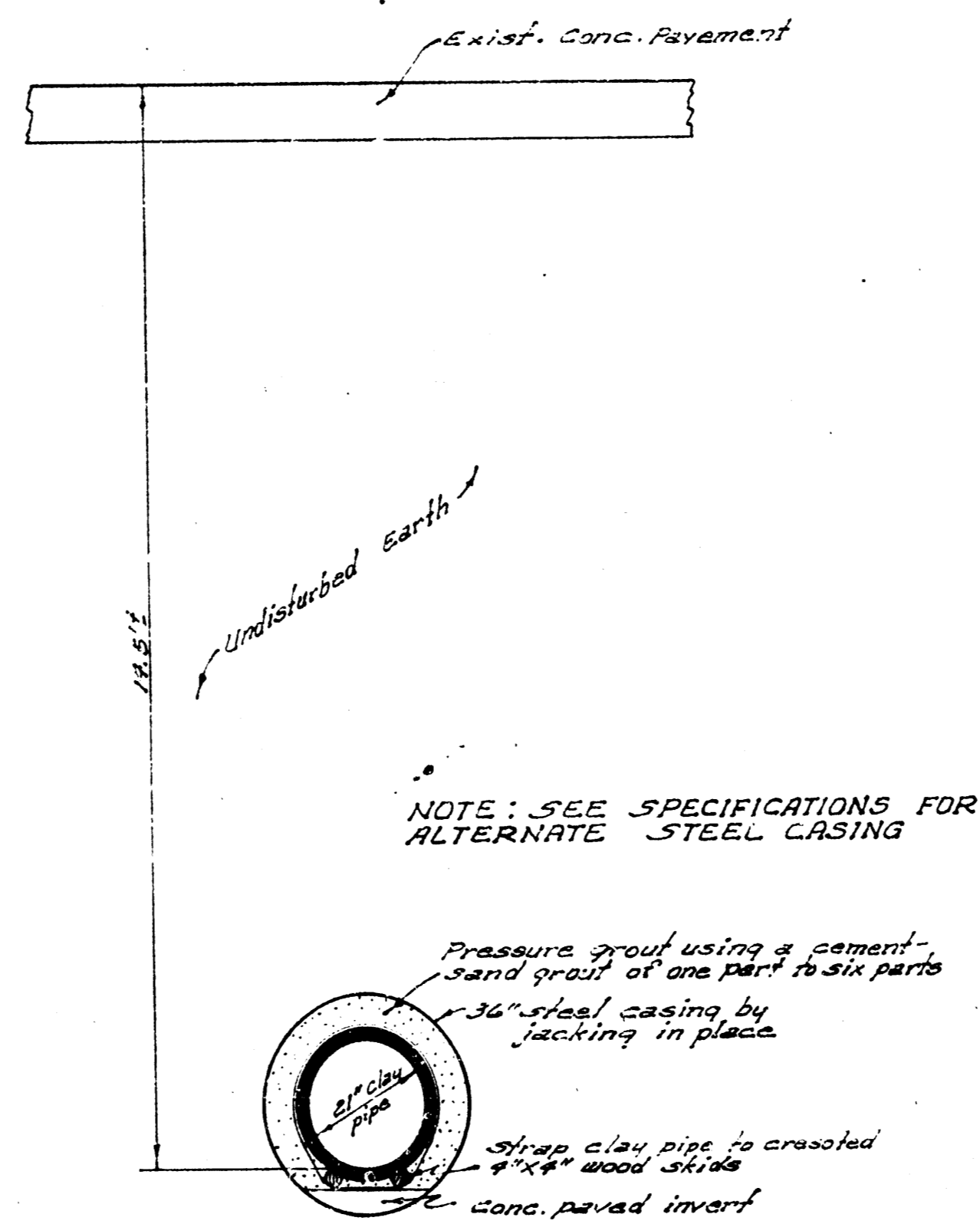
SUB. 2, S.W. INTERCEPTOR
 PROJECT NO. DBKMS6E083
 SHEET 9 OF 13



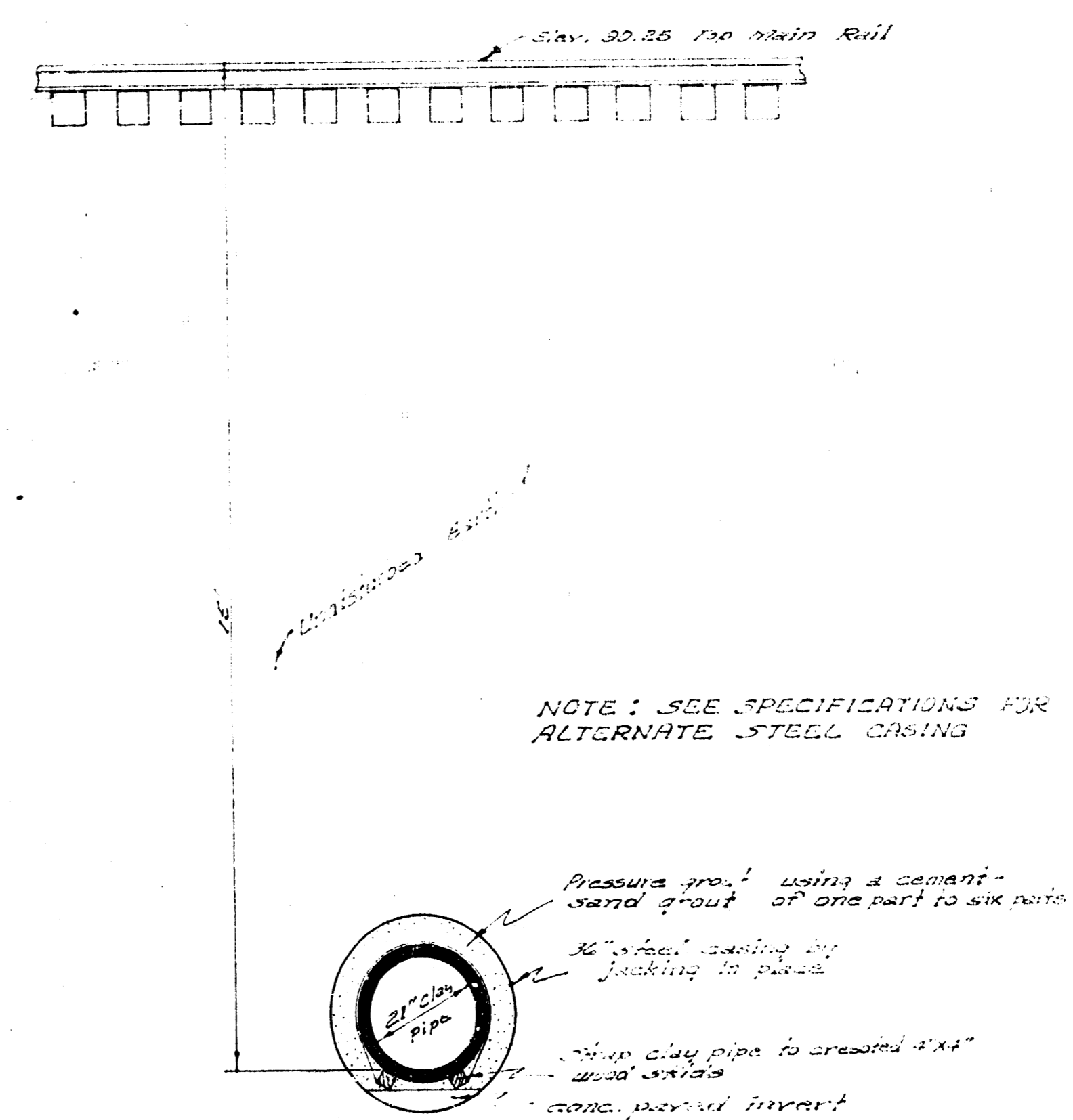




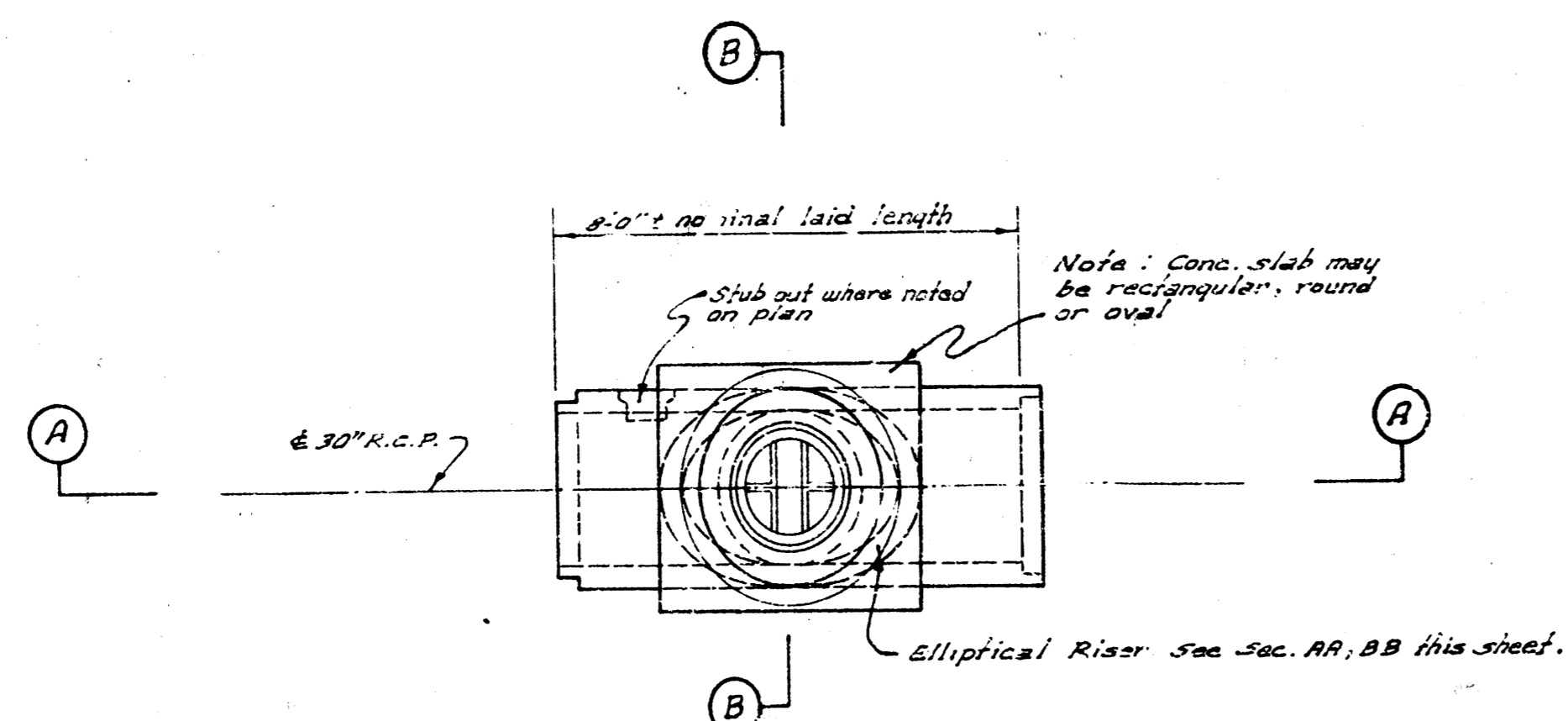
TYPICAL SECTION
 47TH ST. 30. (HIGHWAY 225) CROSSING STR. 1100 TO 1175 LN. #2
 Scale 1"=2'-0"



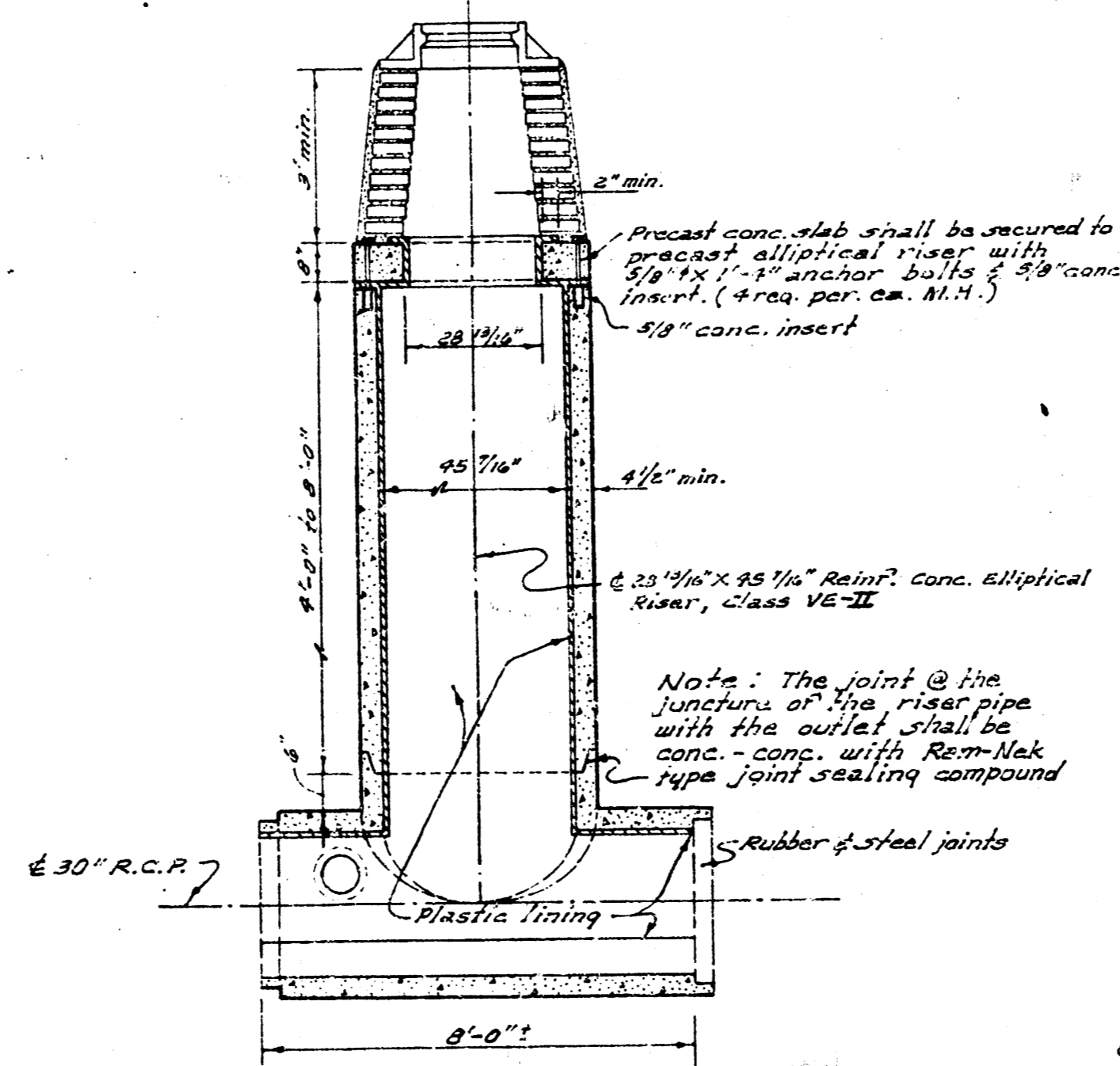
TYPICAL SECTION
 BROADWAY (HIGHWAY 81) CROSSING STR. 64156 TO 64126 LN. #1
 Scale 1"=2'-0"



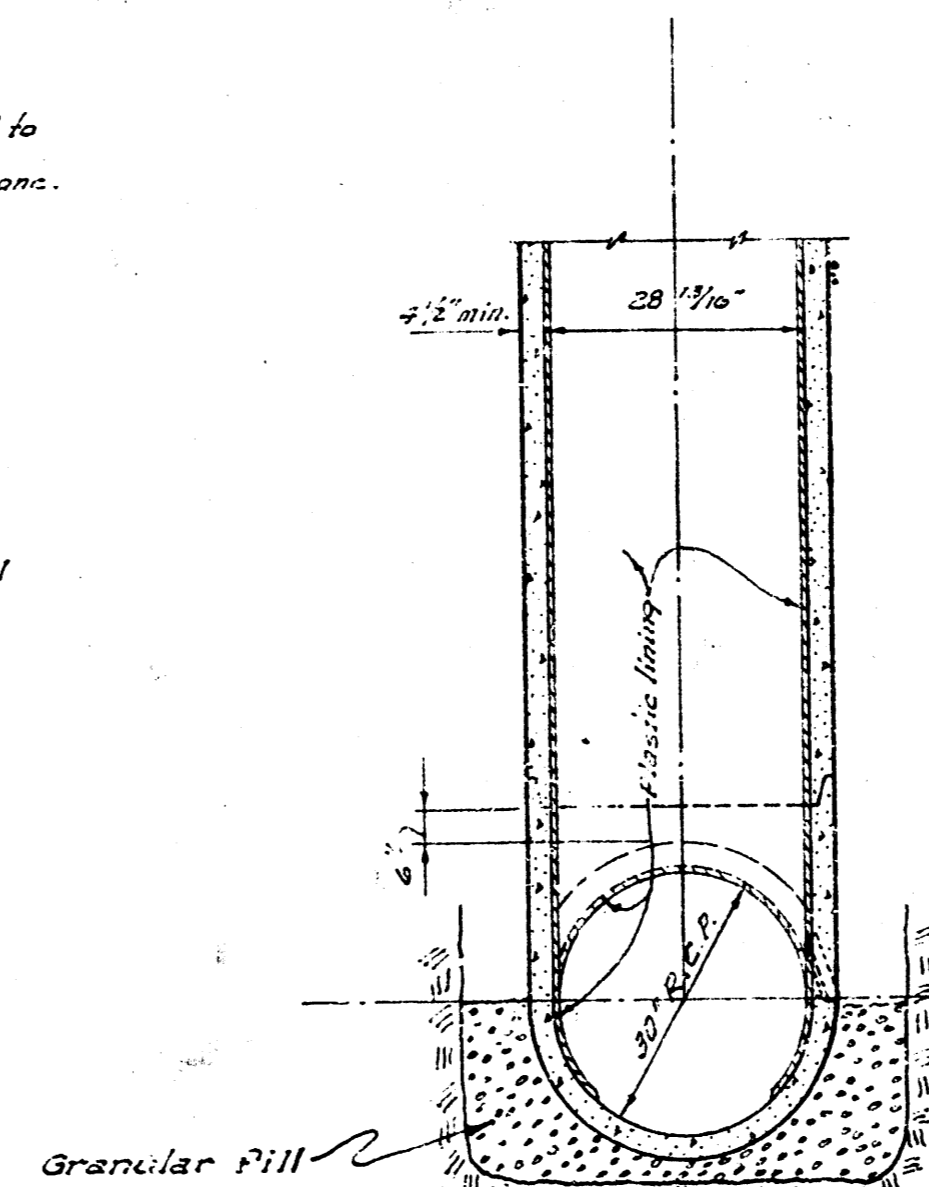
TYPICAL SECTION
 C.R.I. & P. R.R. CROSSING STR. 84123 TO 84194 LN. #1
 Scale 1"=2'-0"



PLAN
 PRECAST CONC. M.H. FOR 30" R.C.P.
 Scale 3/4"=1'-0"



SECTION A-A
 Scale 3/4"=1'-0"



SECTION B-B
 No Scale

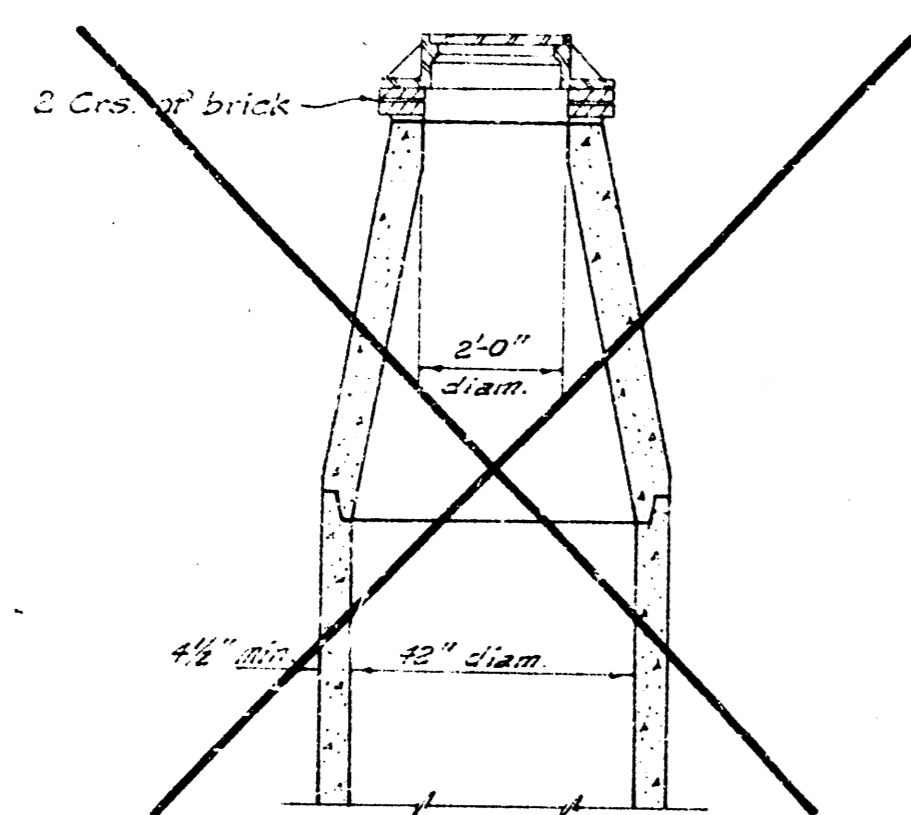
GENERAL NOTES:

- #1 24" & 21" clay pipe shall be encased with 8" Reinf. conc. encasement. 8" Reinf. conc. encasement on 24" clay pipe shall not be paid directly, but shall be included in price bid for 24" clay pipe encased & 21" clay pipe encased respectively.
- #2 Where boring, augering or jacking is required in connection with railroads or highways, each crossing will be measured for payment horizontally along the $\frac{1}{2}$ of the casing from end to end.
 The unit price bid for steel casing (36") shall include all costs of installation, pressure proof, created wood skids, metal struts, conc. paved invert, and encasement & all necessary tools & equipment required to complete the work. No interruption of traffic will be permitted & any location where boring, augering or jacking is required.
- #3 All sawing of exist. conc. pavements to be removed shall be incidental to the item of pavement item.
- #4 Before repairing asphalt traveled way, trim exist. mat (1) and rest of road base repair with power saw. Cost of sawing to be included in bid item Tans Asphalt.
- #5 The Contractor shall be responsible for all settlement of backfill which may occur within one year after final completion of the project.
 The Contractor shall make or cause to be made all necessary backfill replacements & repairs within 30 days after notice from the Engineer.
- #6 All sand backfill to be incidental to the project & shall be included in bid price of Lin. Ft. of pipe.
 Where flushing of the excavated material is directed by the Engineer, the Contractor shall consolidate the backfill using water jets & vibrators. Flushing to be incidental to the project & shall be included in the bid price of Lin. Ft. of pipe.

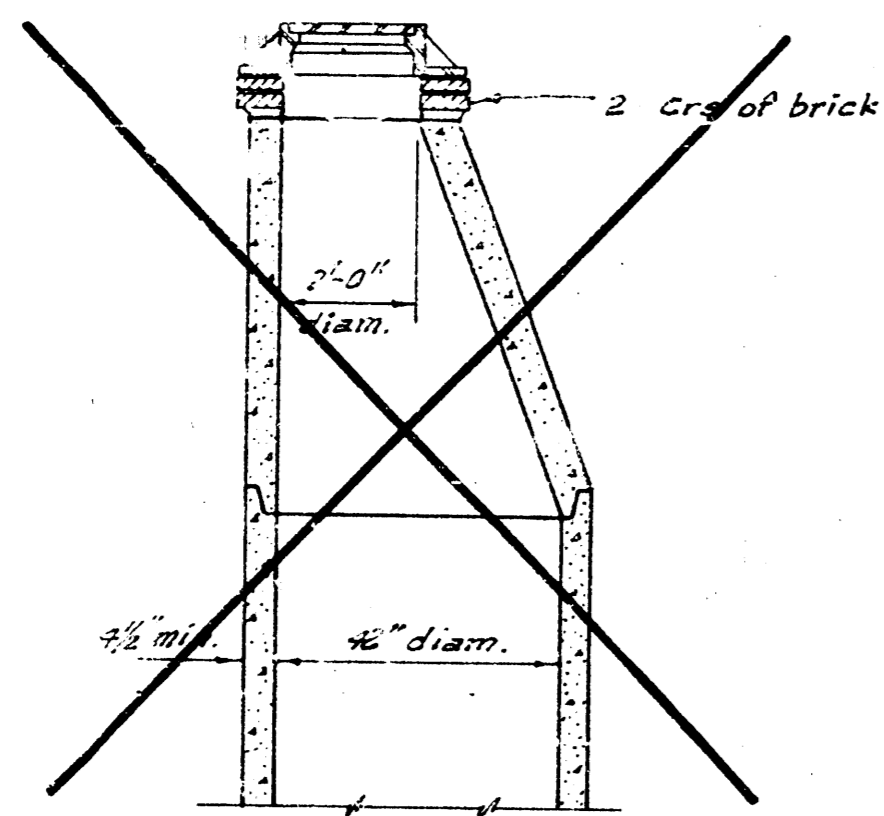
General Notes continued on sheet 13

GENERAL NOTES CONTINUED

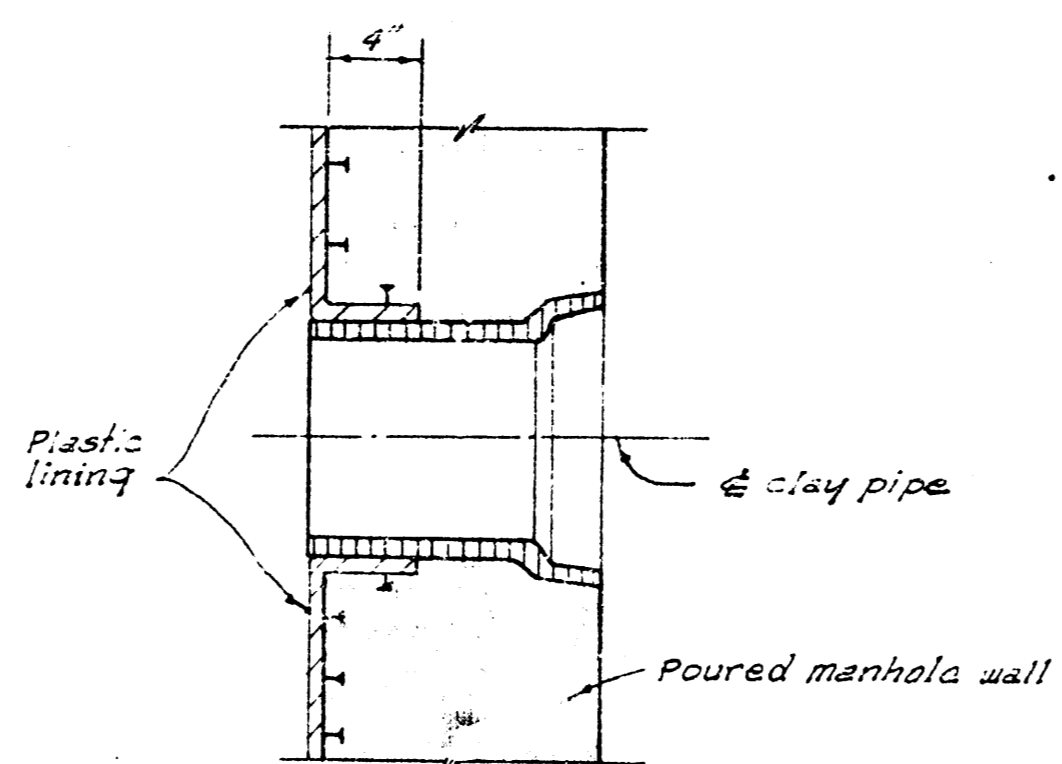
#7 All 6" & 8" slabs as shown on plans or called for in the specifications will not be paid for directly but shall be included in price bid per ea. manhole all types.



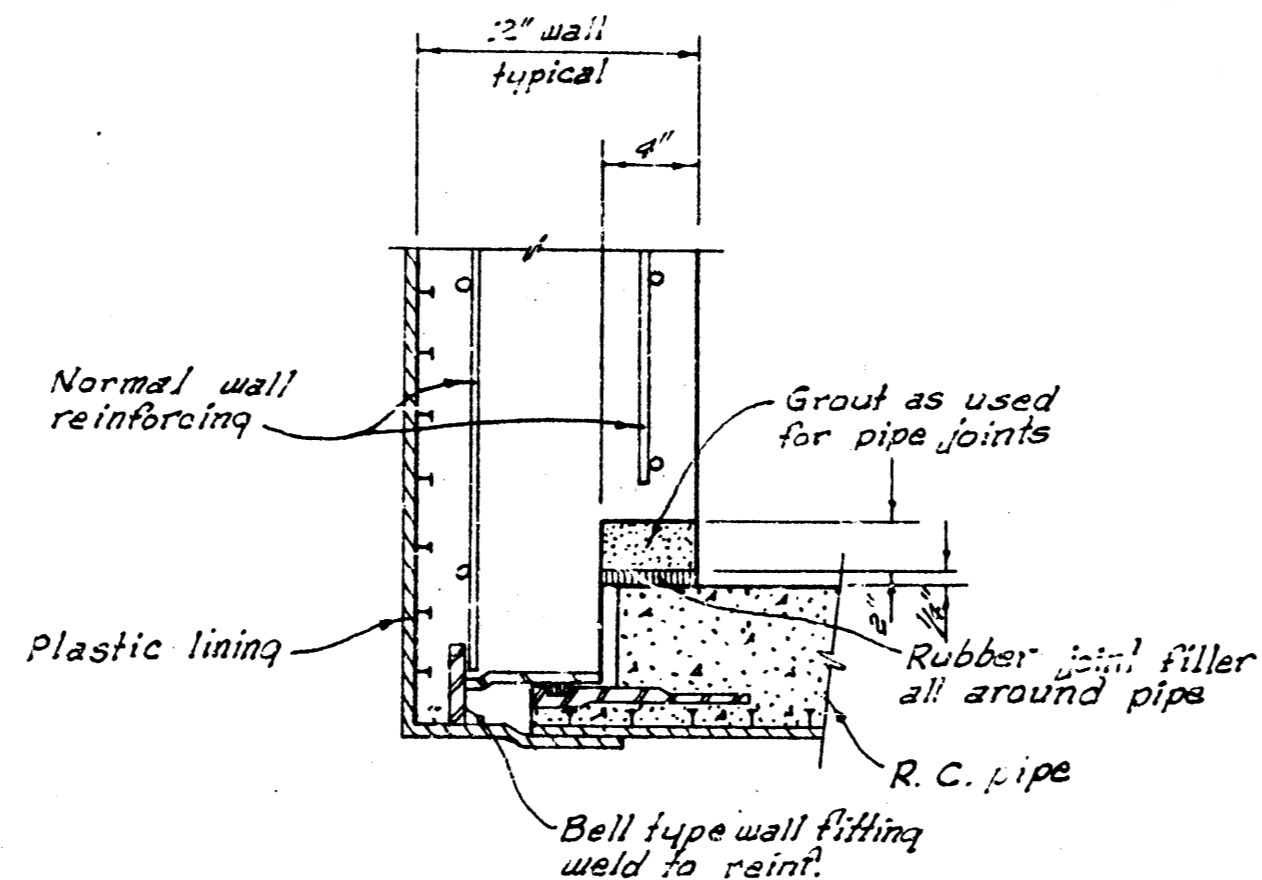
SECTION



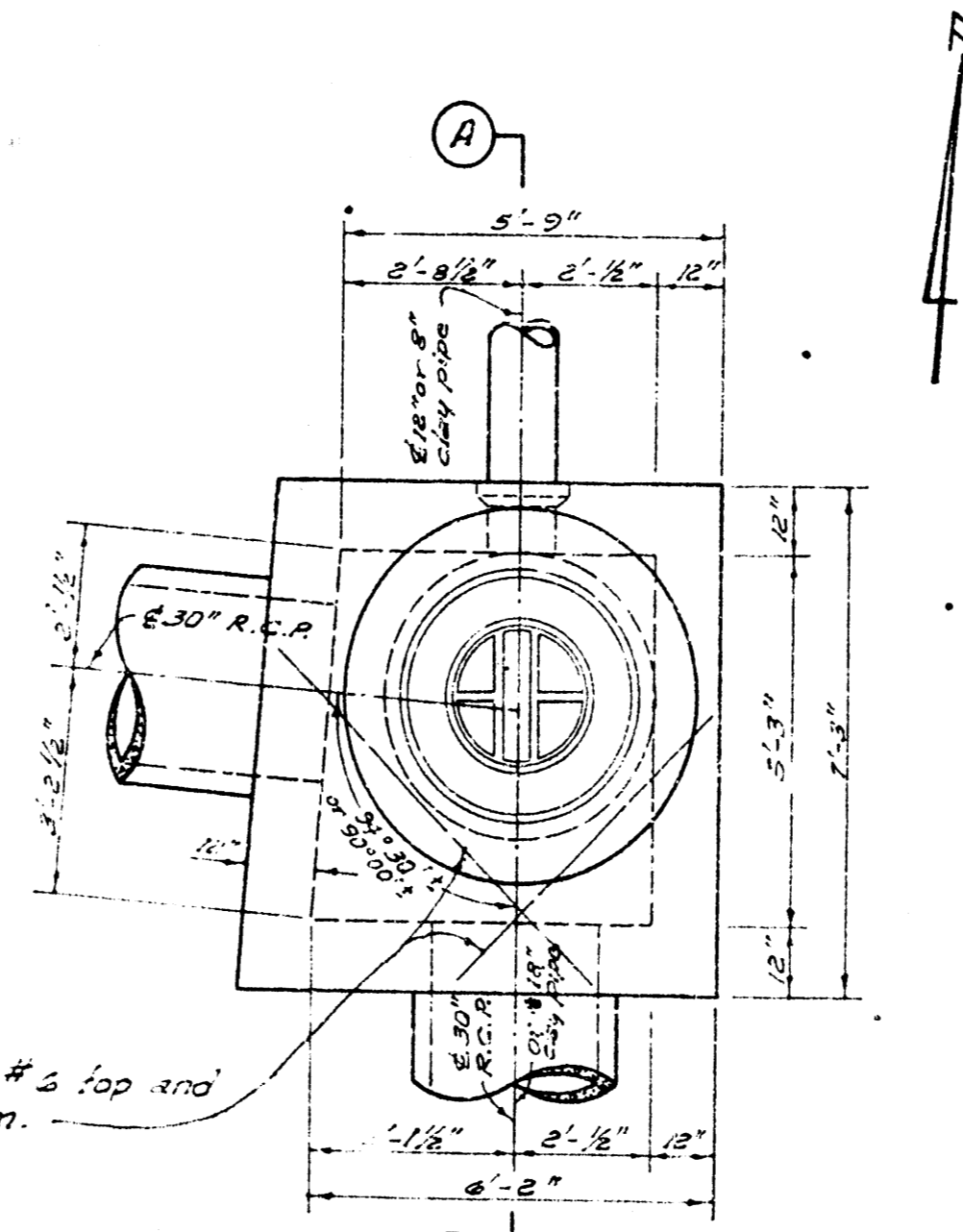
SECTION



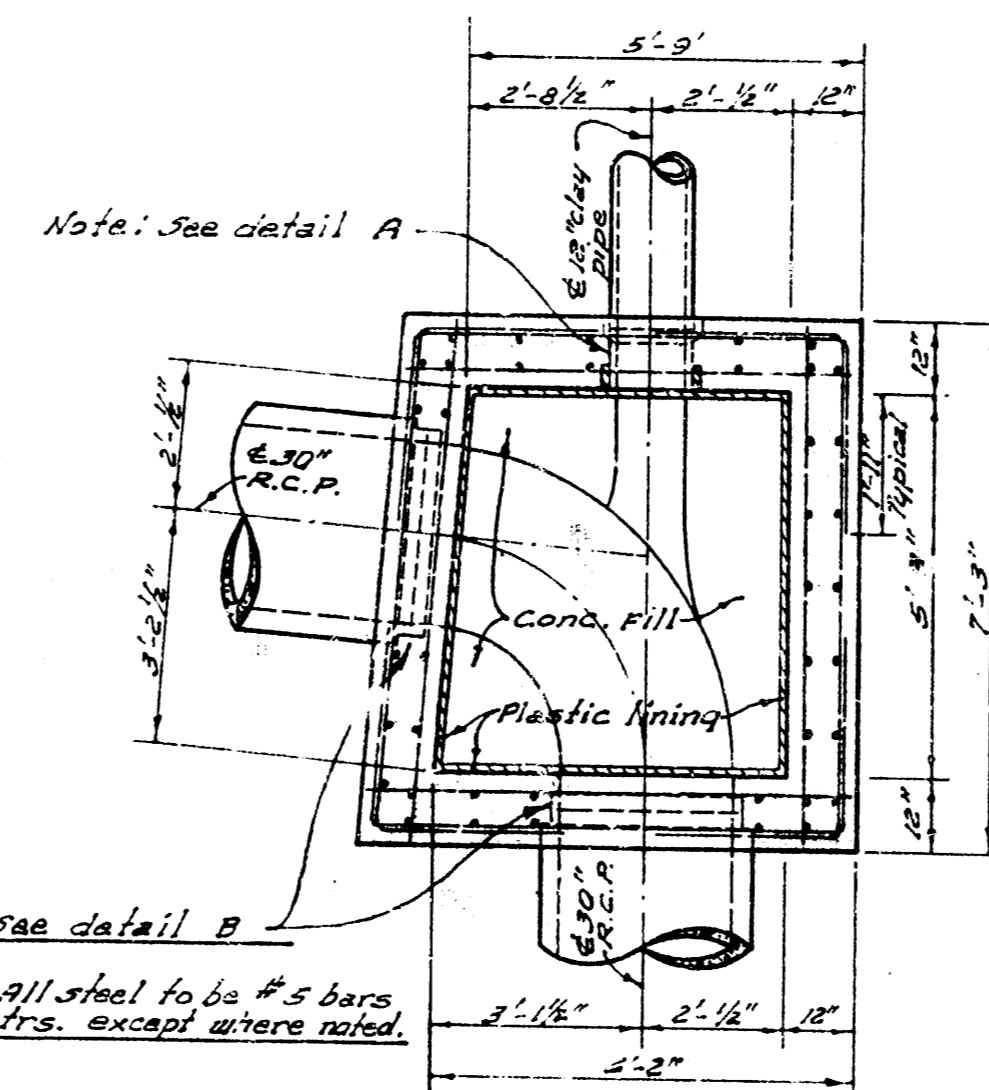
DETAIL A
Scale 1/2"=1'-0"



DETAIL B
Scale 1/2"=1'-0"

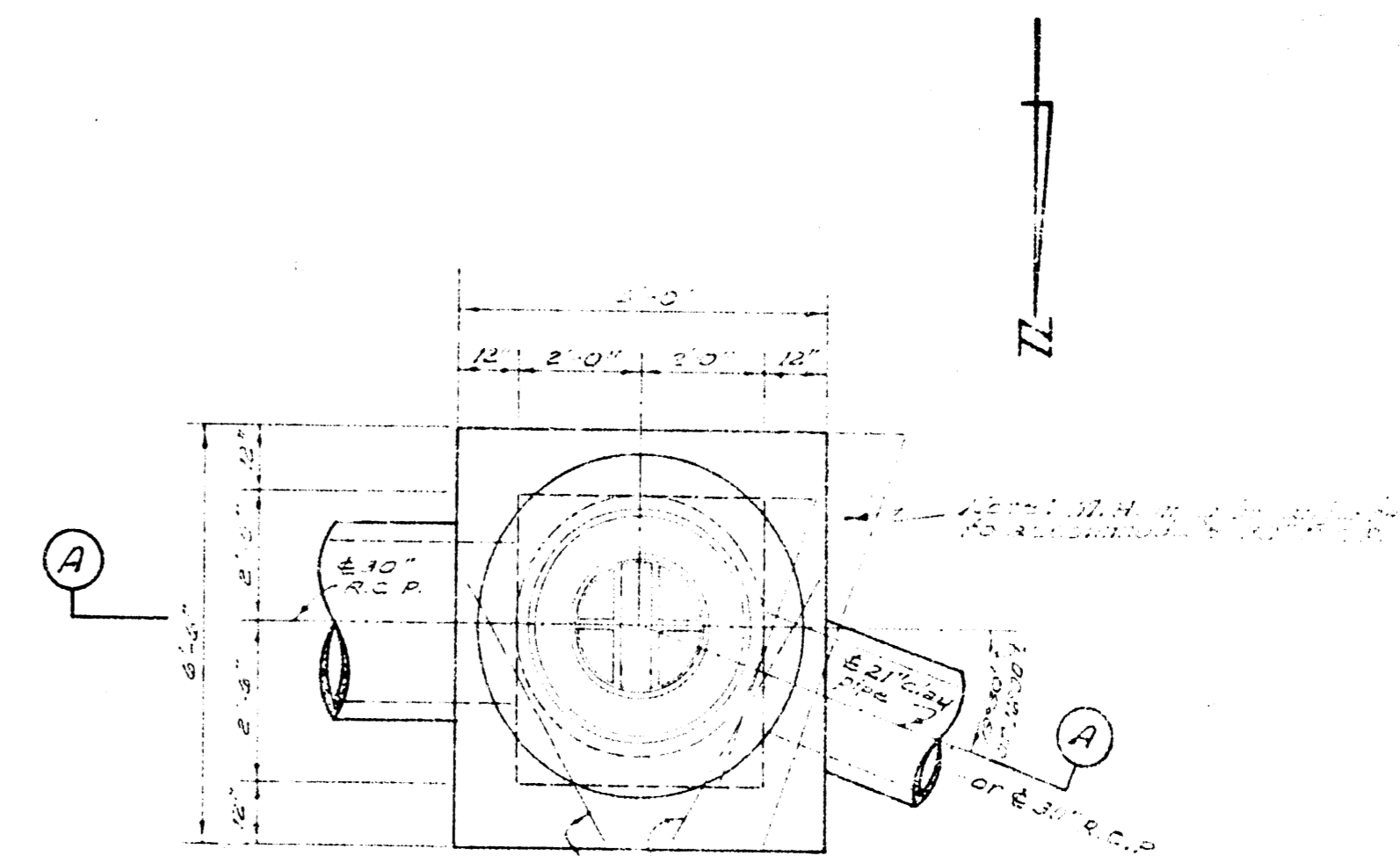


PLAN

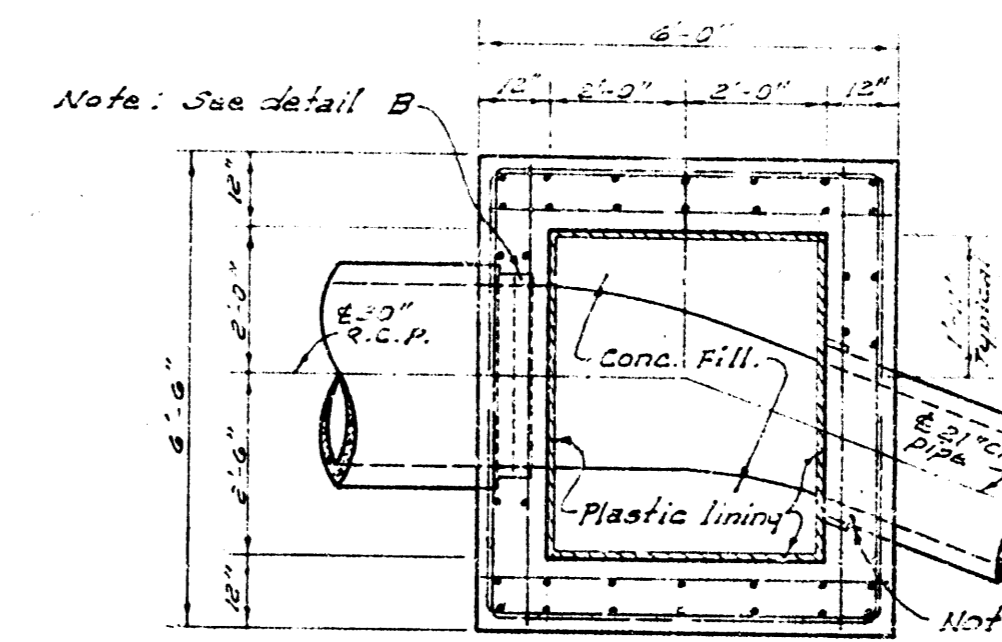


SECTION

Note: All steel to be #5 bars
#12" cfrs. except where noted

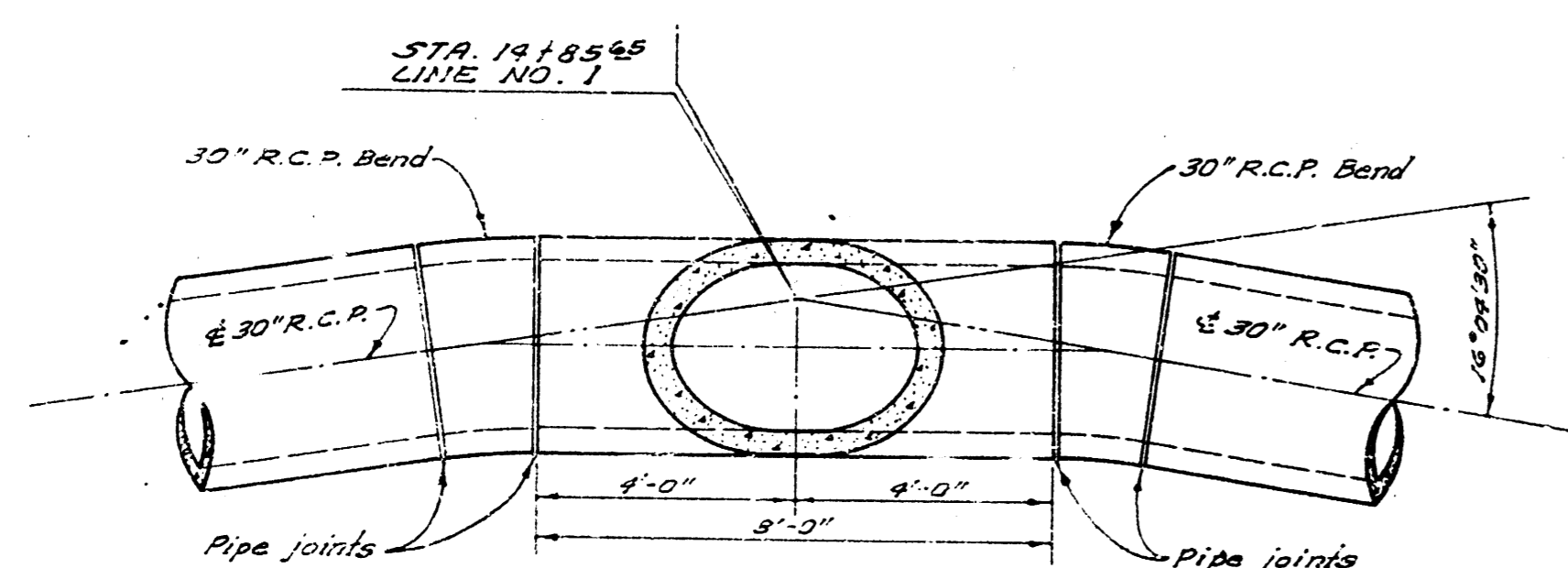


PLAN



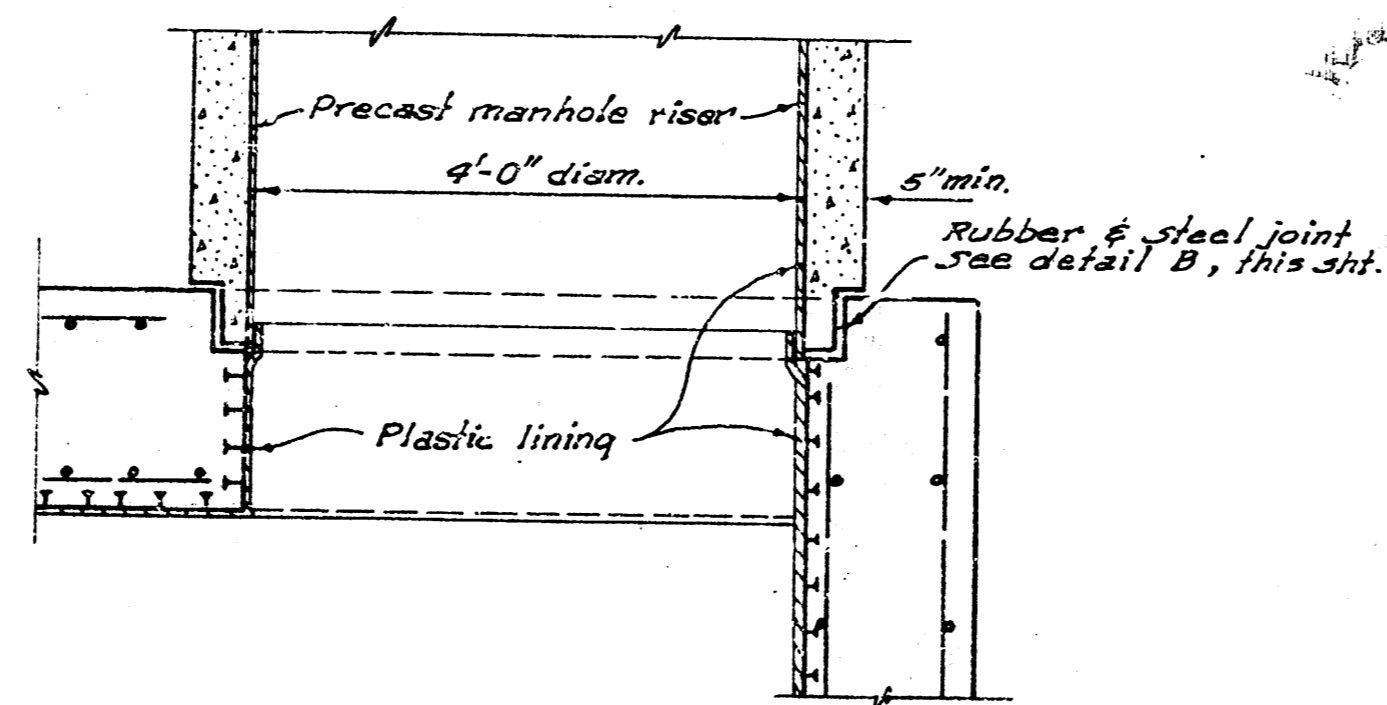
SECTION

Note: All steel to be #5 bars
#12" cfrs. except where noted

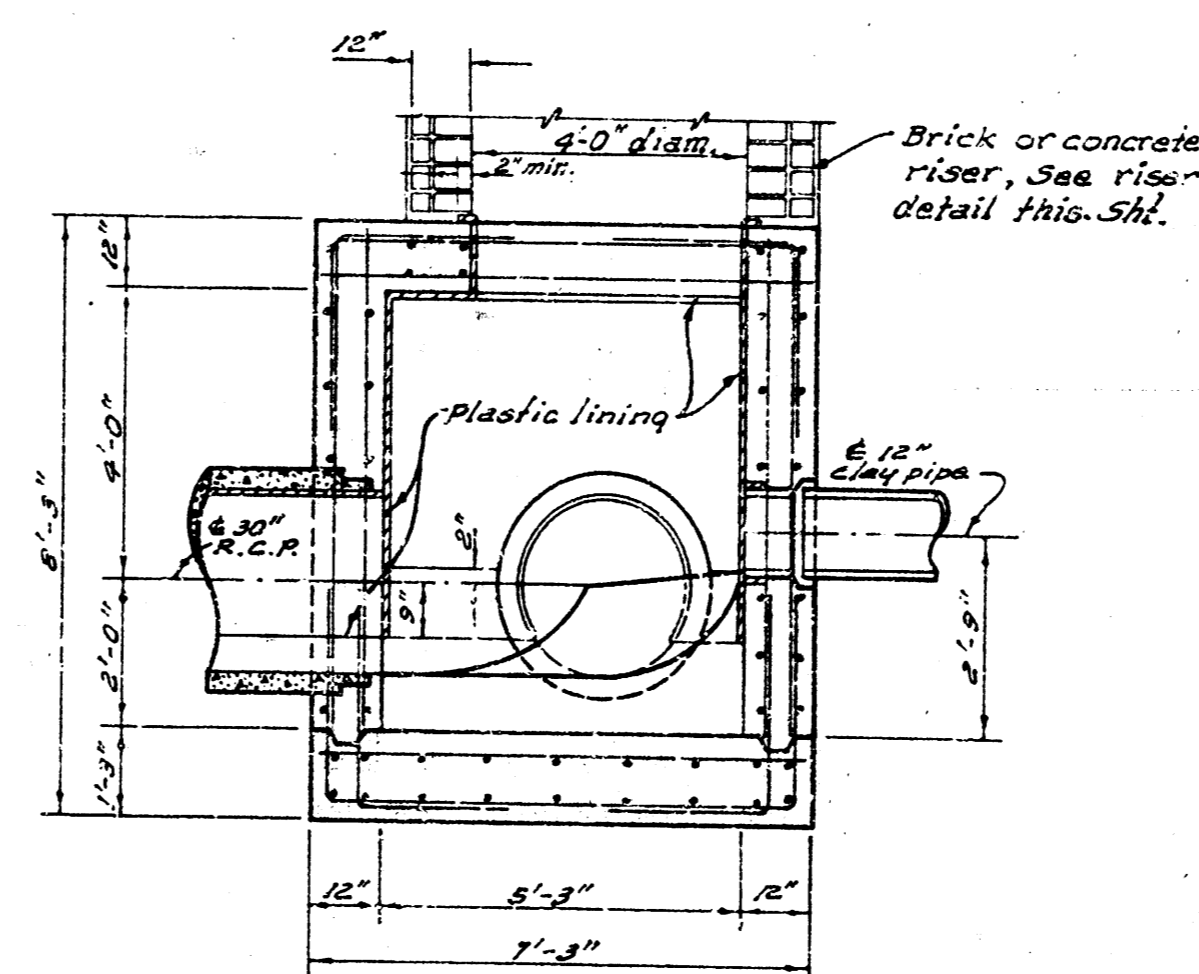


ALIGNMENT DETAIL
Scale 3/8"=1'-0"

Note: Provide 30" R.C.P. bands as required to maintain alignment @ the following locations: 14185+30, Sta. 14185+50, 14185+58, 14185+59, 14185+60, 14185+61, 14185+62, 14185+63, 14185+64, 14185+65, 14185+66, 14185+67, 14185+68, 14185+69, 14185+70, 14185+71, 14185+72, 14185+73, 14185+74, 14185+75, 14185+76, 14185+77, 14185+78, 14185+79, 14185+80, 14185+81, 14185+82, 14185+83, 14185+84, 14185+85, 14185+86, 14185+87, 14185+88, 14185+89, 14185+90, 14185+91, 14185+92, 14185+93, 14185+94, 14185+95, 14185+96, 14185+97, 14185+98, 14185+99, 14186+00.

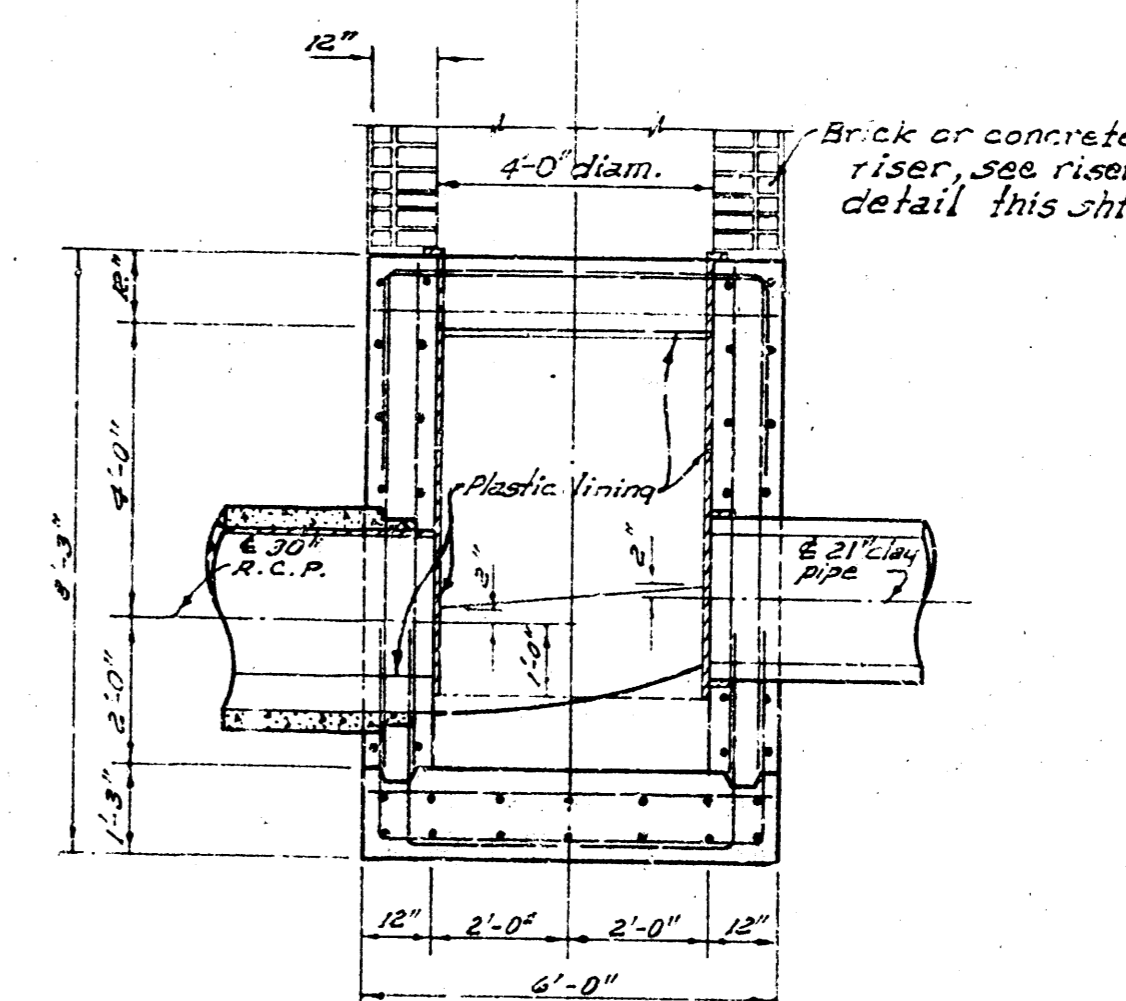


PRECAST RISER ON POURED MANHOLE DETAIL
Scale 3/4"=1'-0"



SECTION AA

ALTERNATE CONC. M.H. FOR STA. 52120 TO STA. 88172
Scale 3/8"=1'-0"



SECTION AA

ALTERNATE CONC. M.H. FOR STA. 66190 TO STA. 47135
Scale 3/8"=1'-0"

SUB. 2, S.W. INTERCEPTOR
PROJECT NO. DBKM568083
SHEET 13 OF 13