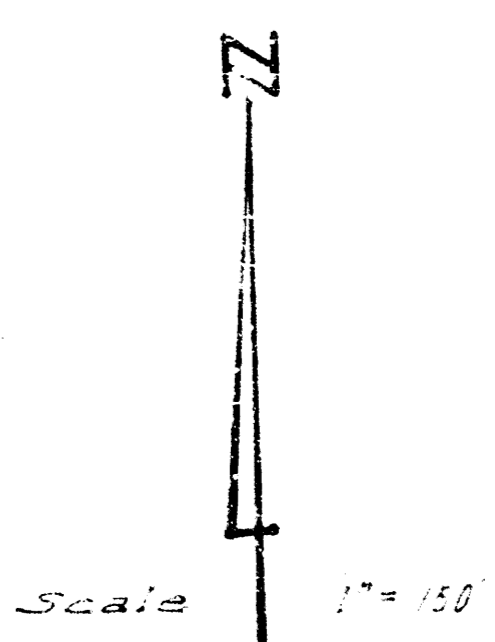
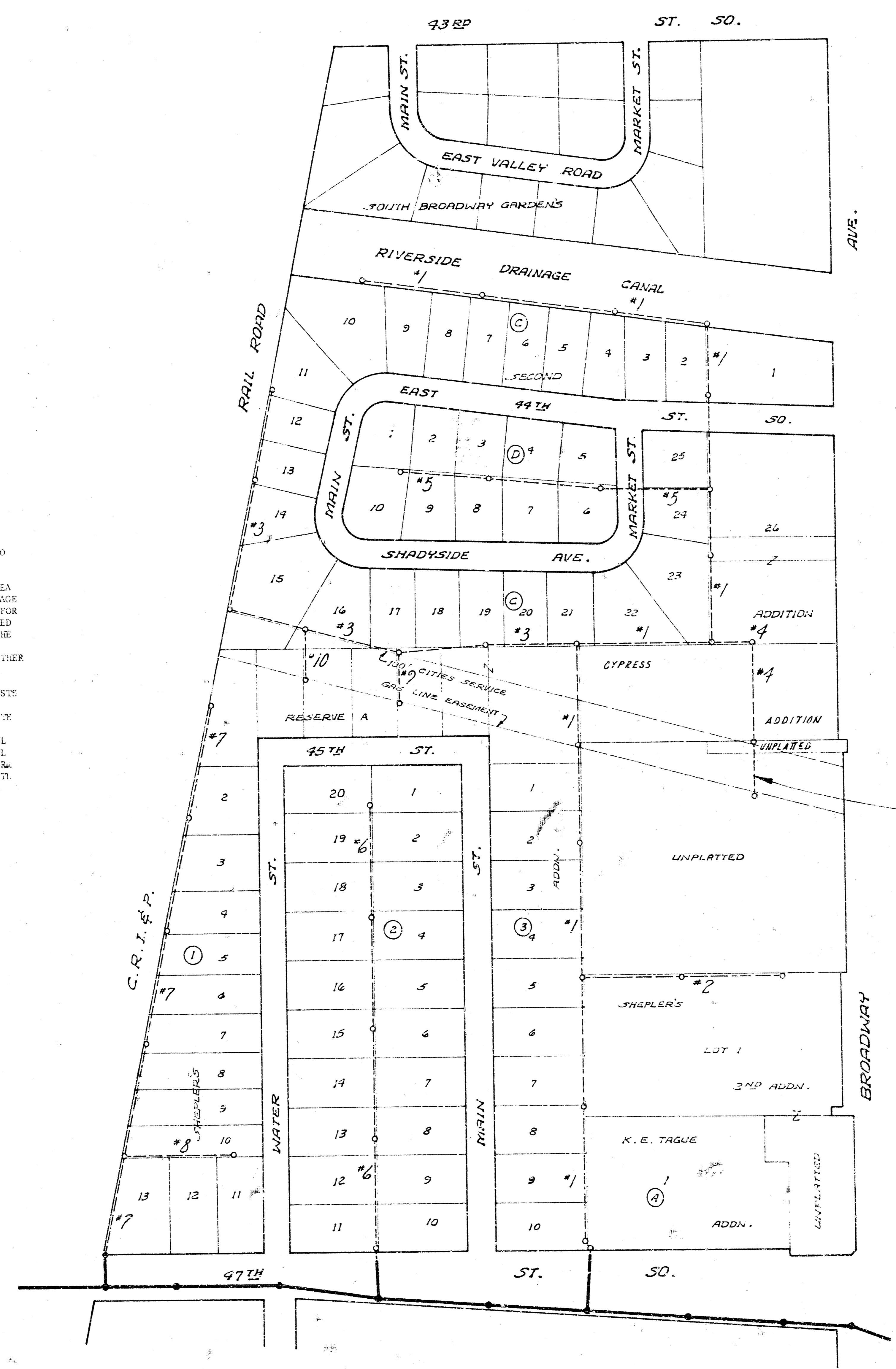


Drawing Number 111-18

- GENERAL NOTES
1. CONTRACTOR IS TO REPLACE ALL FENCE THAT IS REMOVED TO FACILITATE CONSTRUCTION OF THE SEWER.
 2. CONTRACTOR SHALL CONTACT CITIES SERVICE PIPELINE COMPANY PRIOR TO DOING ANY WORK ACROSS THEIR EASEMENT.
 3. RAILROAD RIGHT-OF-WAY IS TO BE UTILIZED AS ADDITIONAL WORKING AREA FOR CONSTRUCTION OF PORTIONS OF LINE #3 AND #7. RIVERSIDE DRAINAGE CANAL RIGHT-OF-WAY IS TO BE UTILIZED AS ADDITIONAL WORKING AREA FOR CONSTRUCTION OF A PORTION OF LINE #1. CONTRACTOR WILL BE REQUIRED TO AREA GRADE THESE RIGHT-OF-WAYS IN A CONDITION ACCEPTABLE TO THE ENGINEER UPON COMPLETION OF THE PROJECT. THIS WORK WILL NOT BE PAID FOR DIRECTLY AND SHALL BE CONSIDERED AS INCIDENTAL TO THE OTHER ITEMS OF WORK.
 4. THE LUMP SUM BID ITEM CLEARING RIGHT-OF-WAY SHALL INCLUDE ALL COSTS FOR REMOVING LARGE TREES, SMALL TREES, STUMPS, HEDGE, BRUSH, AND ALL OTHER SITE CLEARING WORK NECESSARY TO PREPARE THE PROJECT SITE FOR CONSTRUCTION. THE APPROXIMATE QUANTITIES OF WORK TO BE COMPLETED UNDER THIS ITEM IS THE REMOVAL OF 35 LARGE TREES, 45 SMALL TREES, 15 STUMPS, AND 120 LINEAL FEET OF HEDGE. CONTRACTOR SHALL OBTAIN ENGINEER'S AT RIVAL PRIOR TO REMOVING ANY TREES. NO OTHER PAYMENT WILL BE MADE FOR CLEARING WORK TO PREPARE THE PROJECT SITE FOR CONSTRUCTION UNLESS PROVISIONS HAVE BEEN MADE FOR ADDITIONAL PAYMENT IN THE CONTRACT BID ITEMS.

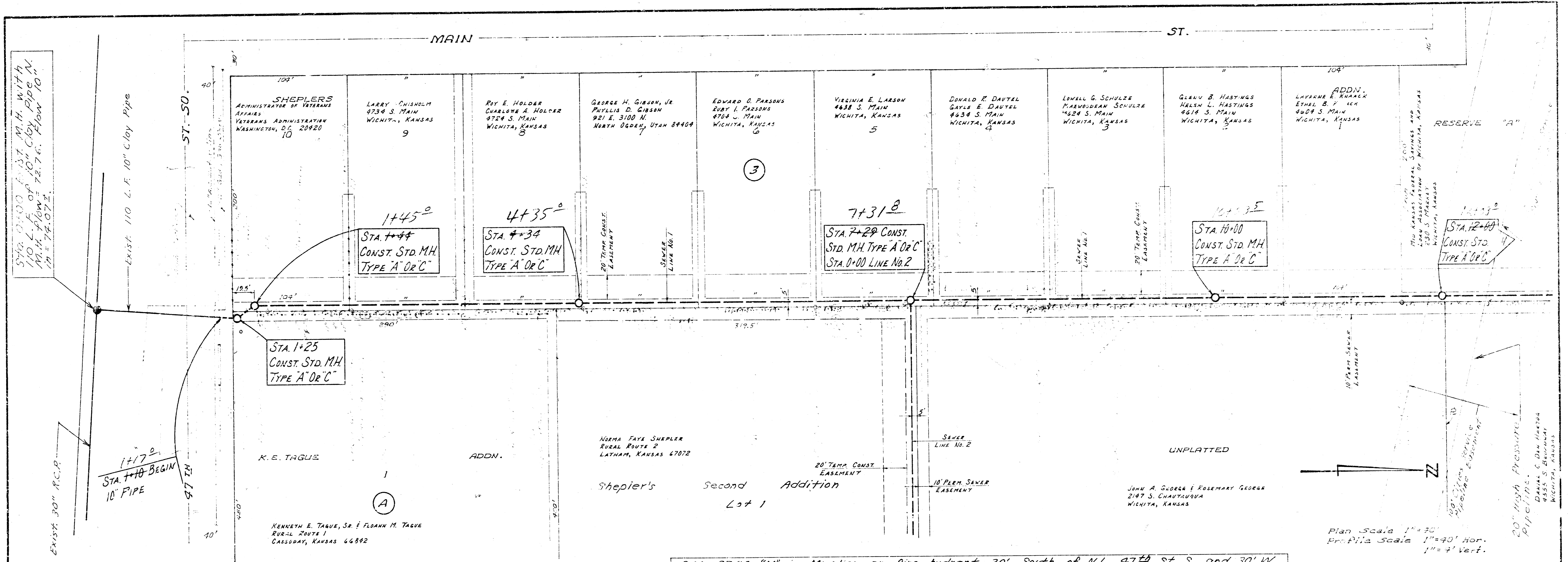


LINE No. 1	SHT. Nos. 2, 3 & 4
LINE No. 2	SHT. No. 5
LINE No. 3	SHT. No. 6
LINE No. 4	SHT. No. 7
LINE No. 5	SHT. No. 8
LINE No. 6	SHT. No. 9
LINE No. 7	SHT. No. 10
LINE No. 8	SHT. No. 5
LINE No. 9	SHT. No. 8
LINE No. 10	SHT. No. 8

NOTE:
Check Elev. of 20" Gas Pipeline before beginning Line No. 1 and Line No. 4. This is to be sure that the sewer line will clear Pipeline.

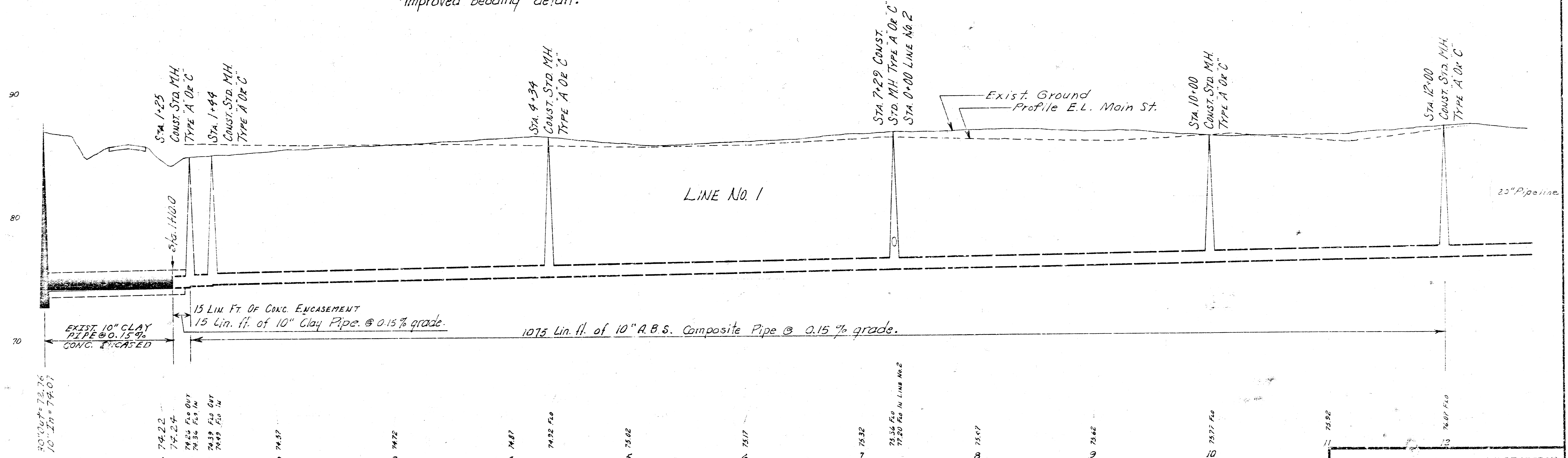
As Built 7-1-75

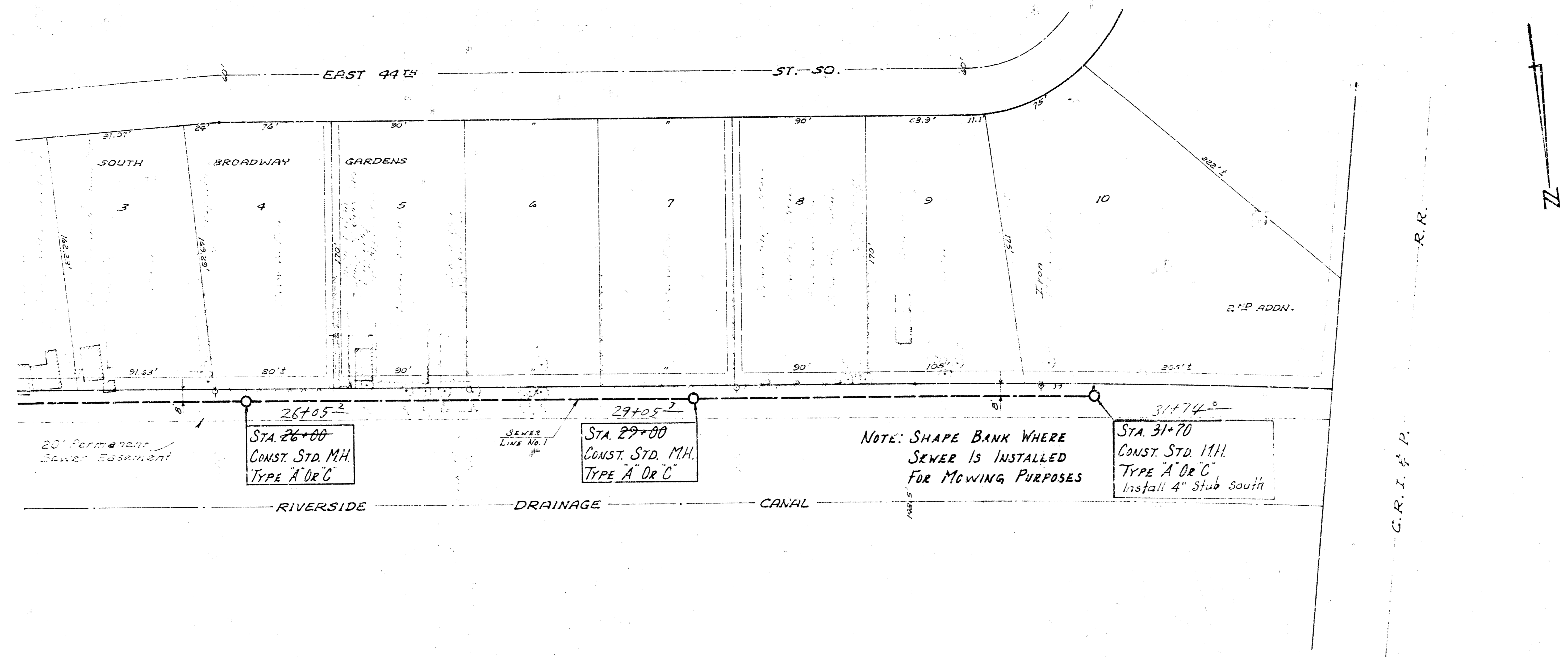
LAT. 9, MAIN 2, S.W. INTERCEPTOR
CITY OF WICHITA, KANSAS
R. W. LINN, CITY ENGINEER
PROJ. NO. D8KLS70013
DATE: Oct. 75



B.M. 87.34 "M" in Mueller on fire hydrant 30' South of N.L. 47th St. S. and 30' W. of entrance to Western Swinger Club.

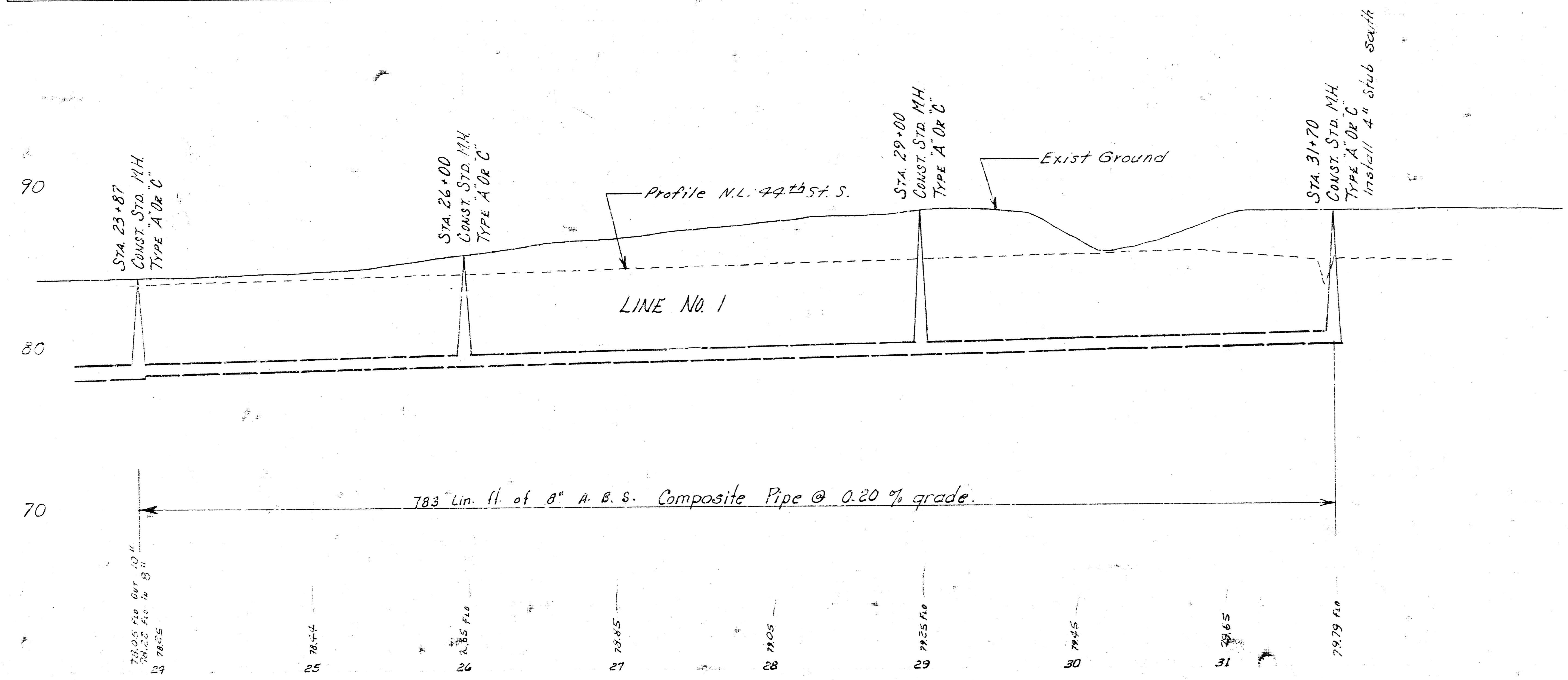
NOTE: See sheet No. 7 for "Improved Bedding" detail.

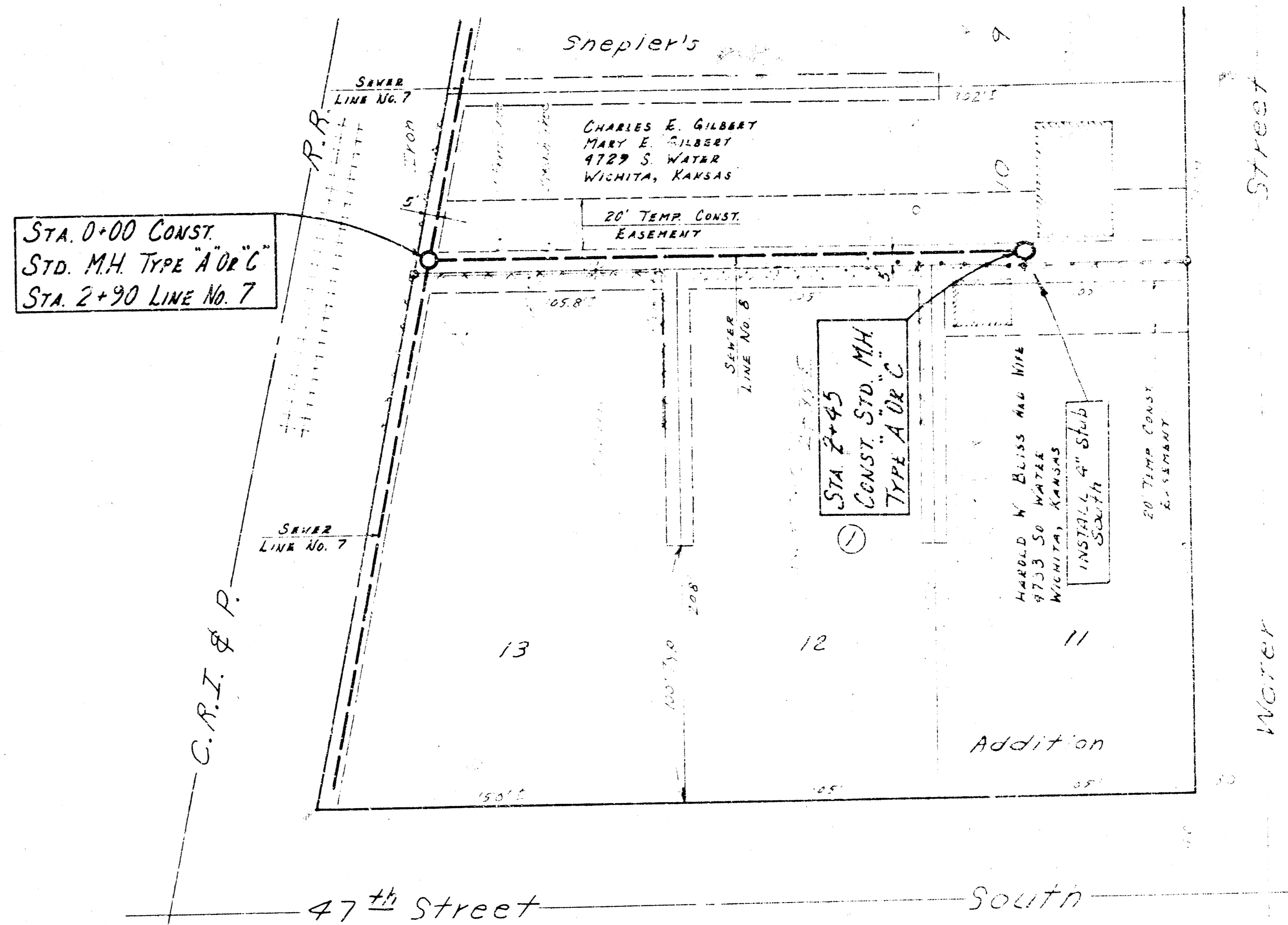
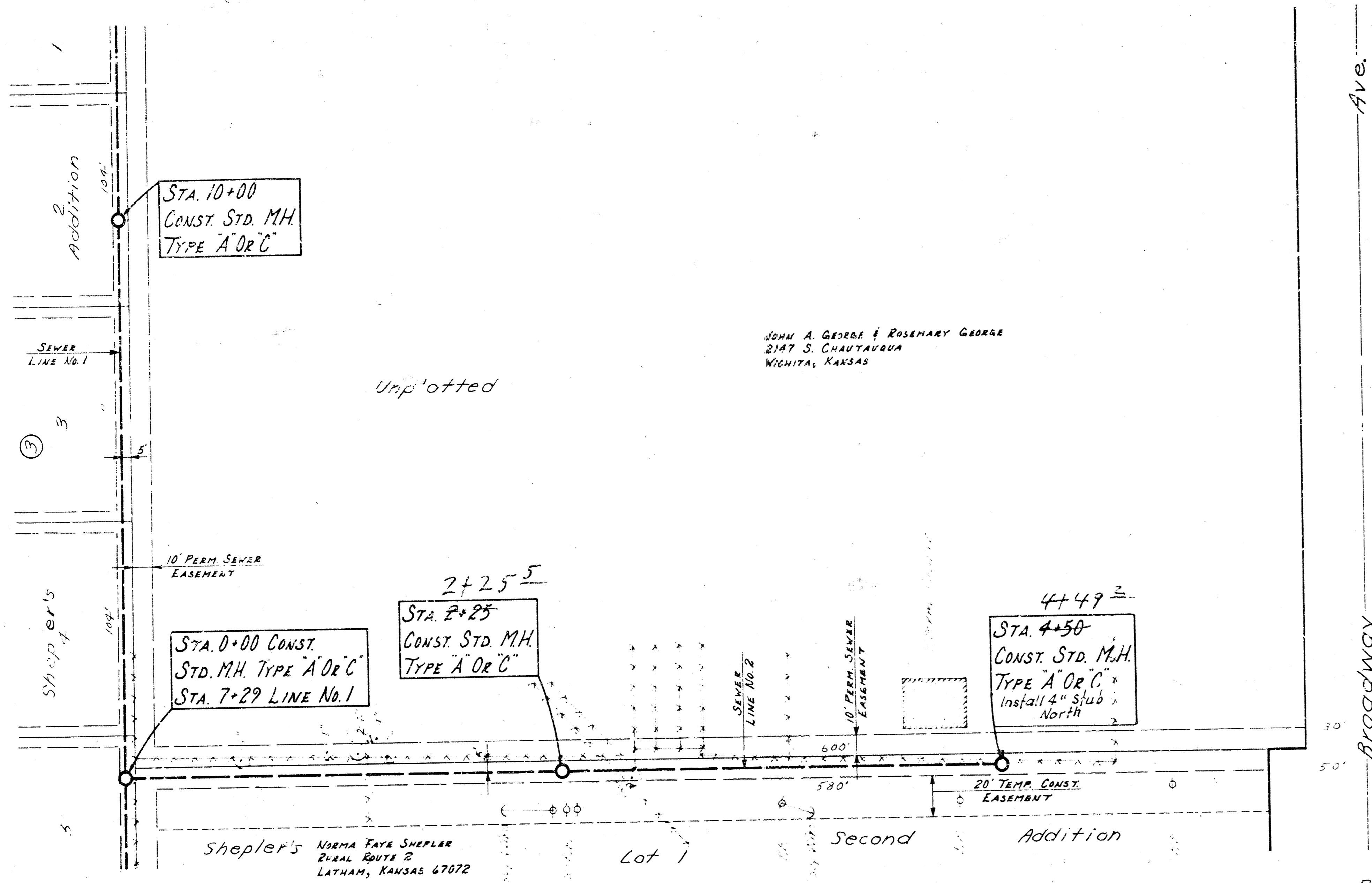




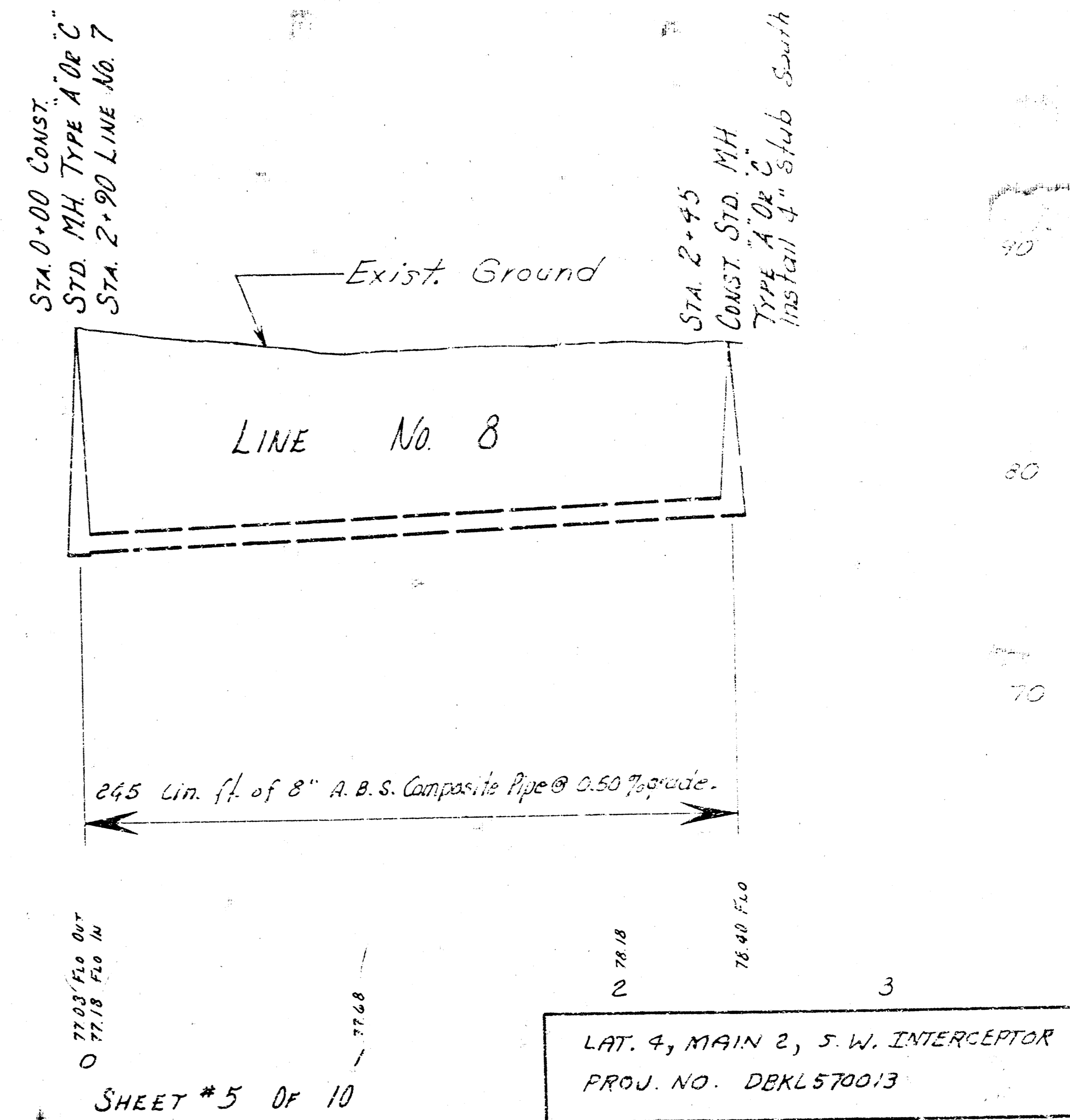
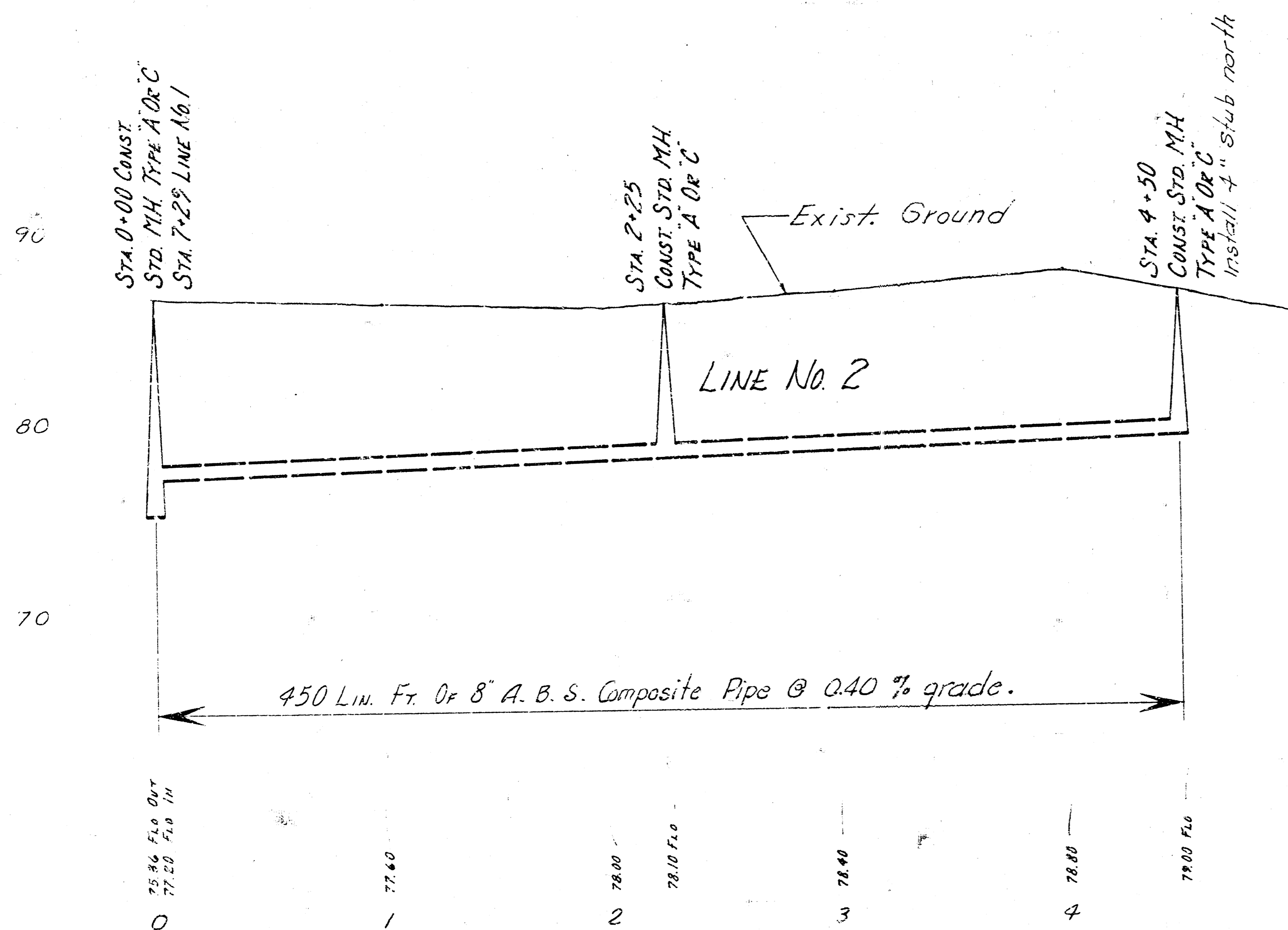
B.M. 87.60 Stepbench S. side of P.P. at N.E. corner of Lot 6, Block C, South Broadway Gardens Second Addition.

Plan Scale Horiz. 1"=40'
Vert. 1"=4'



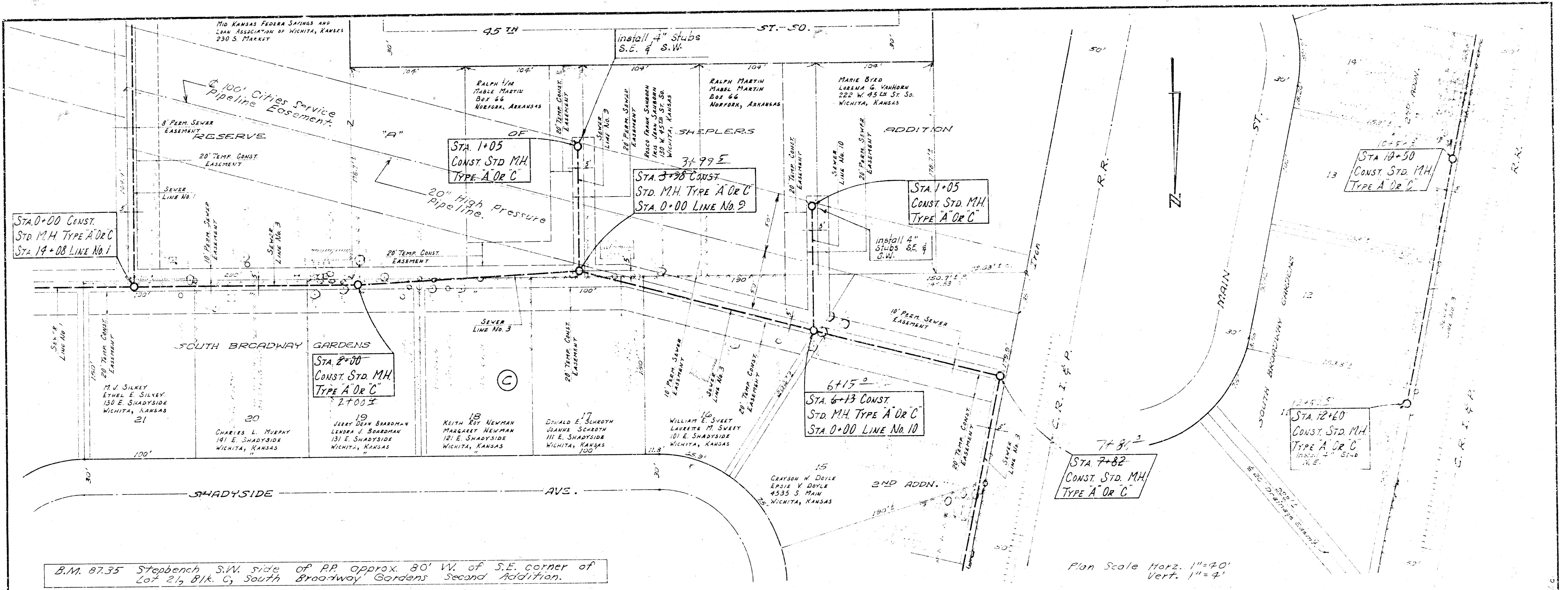


Plan Scale Horiz. 1" = 40'
Vert. 1" = 5'



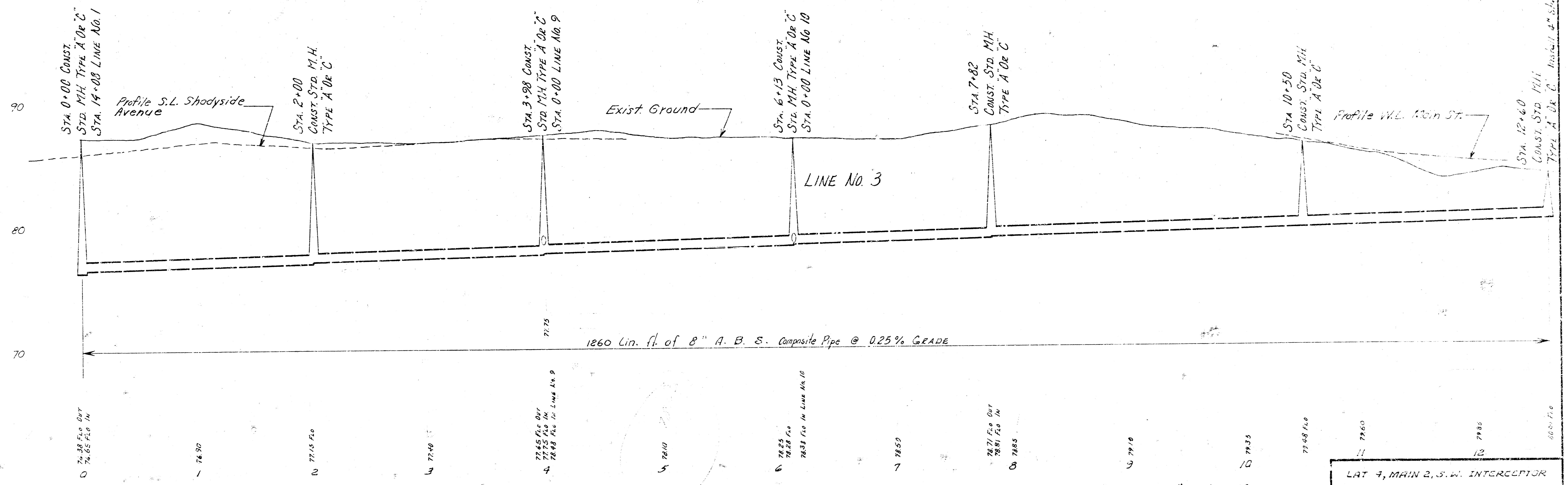
LAT. 4, MAIN 2, S.W. INTERCEPTOR
PROJ. NO. DEKL570013

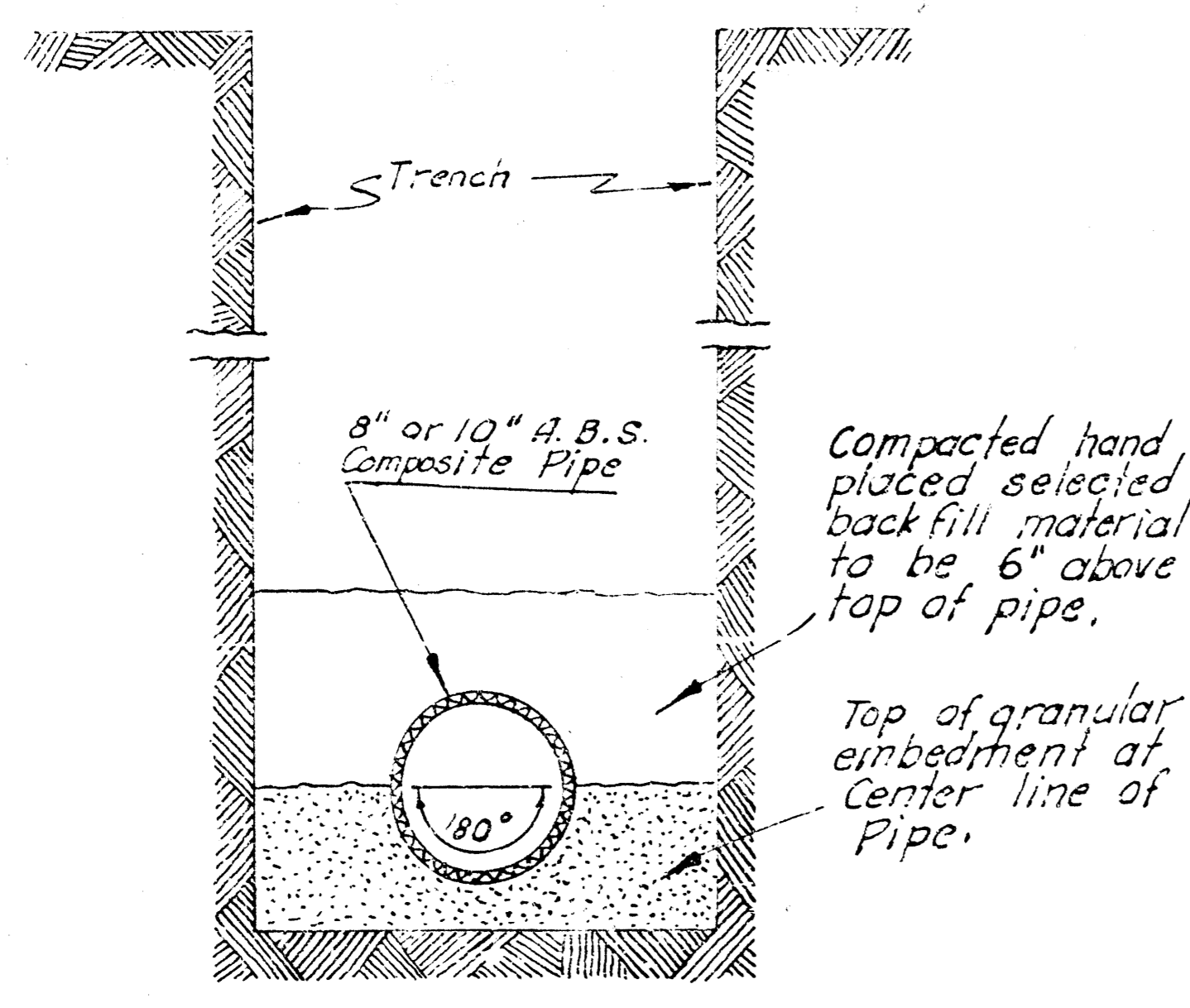
SHEET #5 OF 10



B.M. 87.35 Stepbench S.W. side of RR approx. 80' W. of S.E. corner of Lot 2 1/2, Bk. C, South Broadway Gardens Second Addition.

Plan Scale Horz. 1"=40'
Vert. 1"=4'

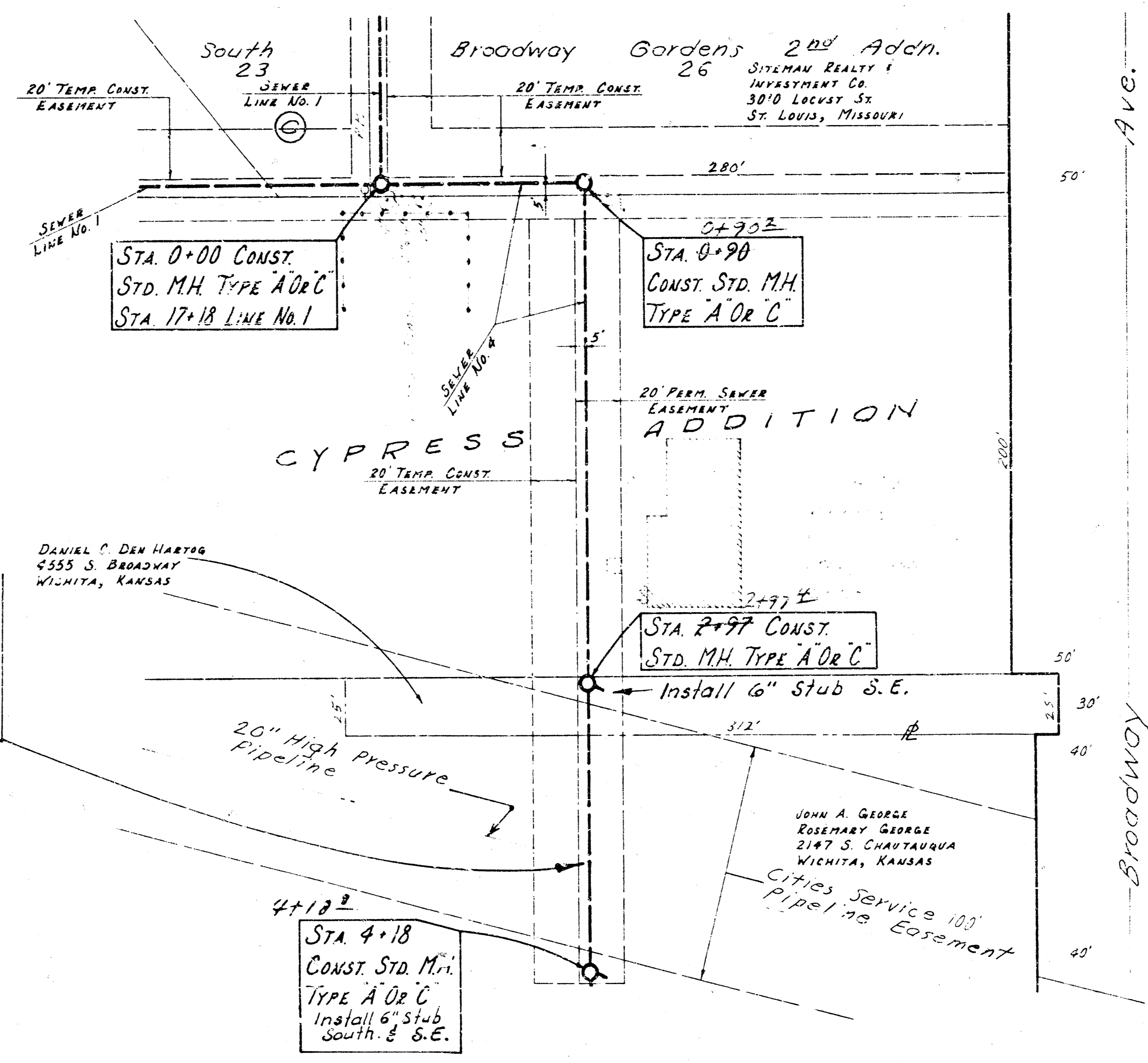




IMPROVED BEDDING

Minimum depth of granular embedment below pipe shall be 1/4 of pipe diameter, but in no case less than 4 inches.

NOTE: Check Elev. of 20" Gas Pipeline before beginning Line No. 1 and Line No. 4. This is to be sure that the sewer line will clear Pipeline.



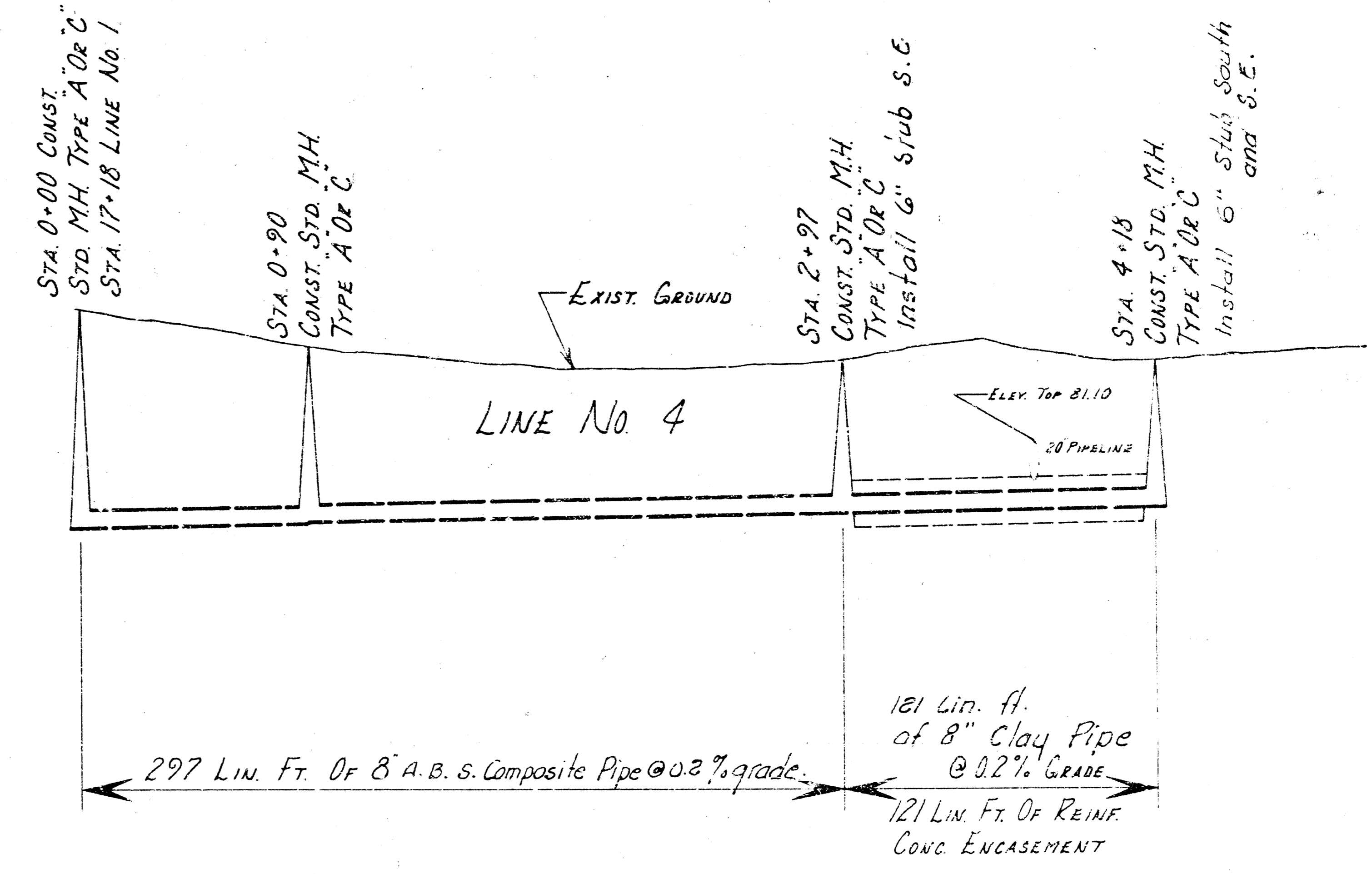
B.M. 86.90 "X" cut in S.W. corner conc. porch @ Kissacks Auto Parts.

B.M. 87.35 Steppench S.W. side of RR approx. 186 ft W. of S.E. corner of Lot 23, Blk. C, South Broadway Gardens 2nd Addn.

Plan Scale Horiz. 1"=40' Vert. 1"=5'

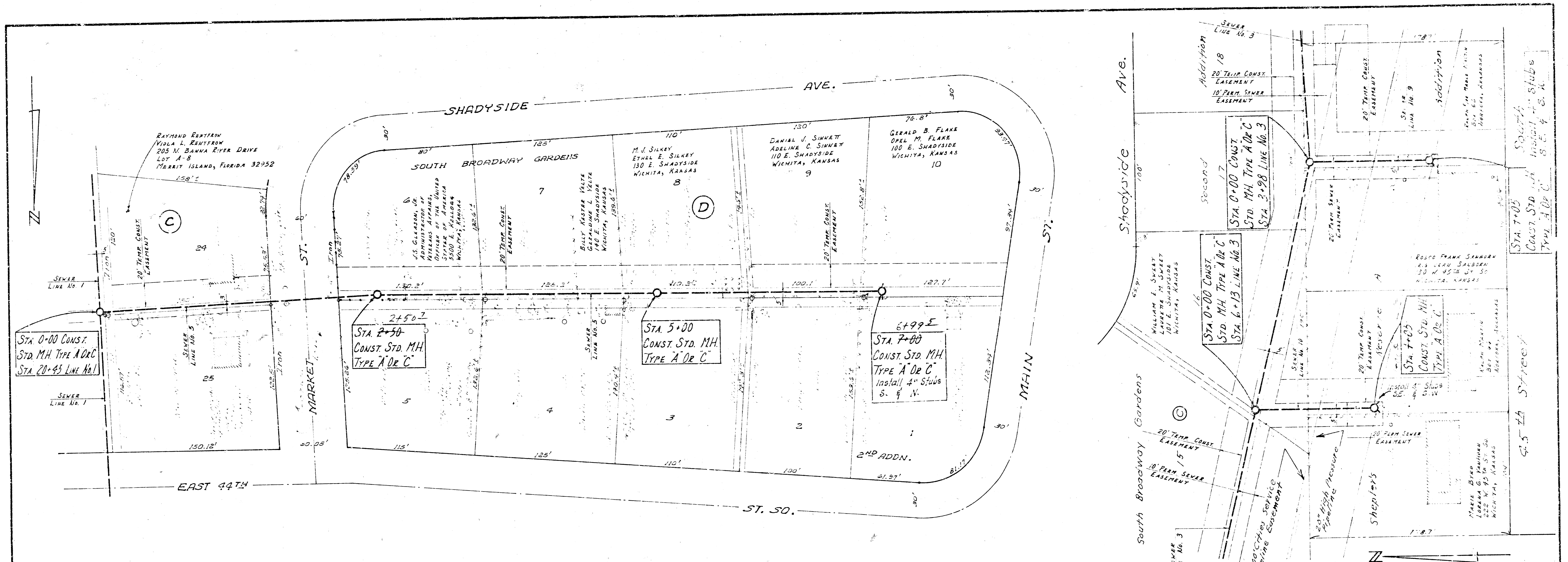
90
80
70

90
80
70

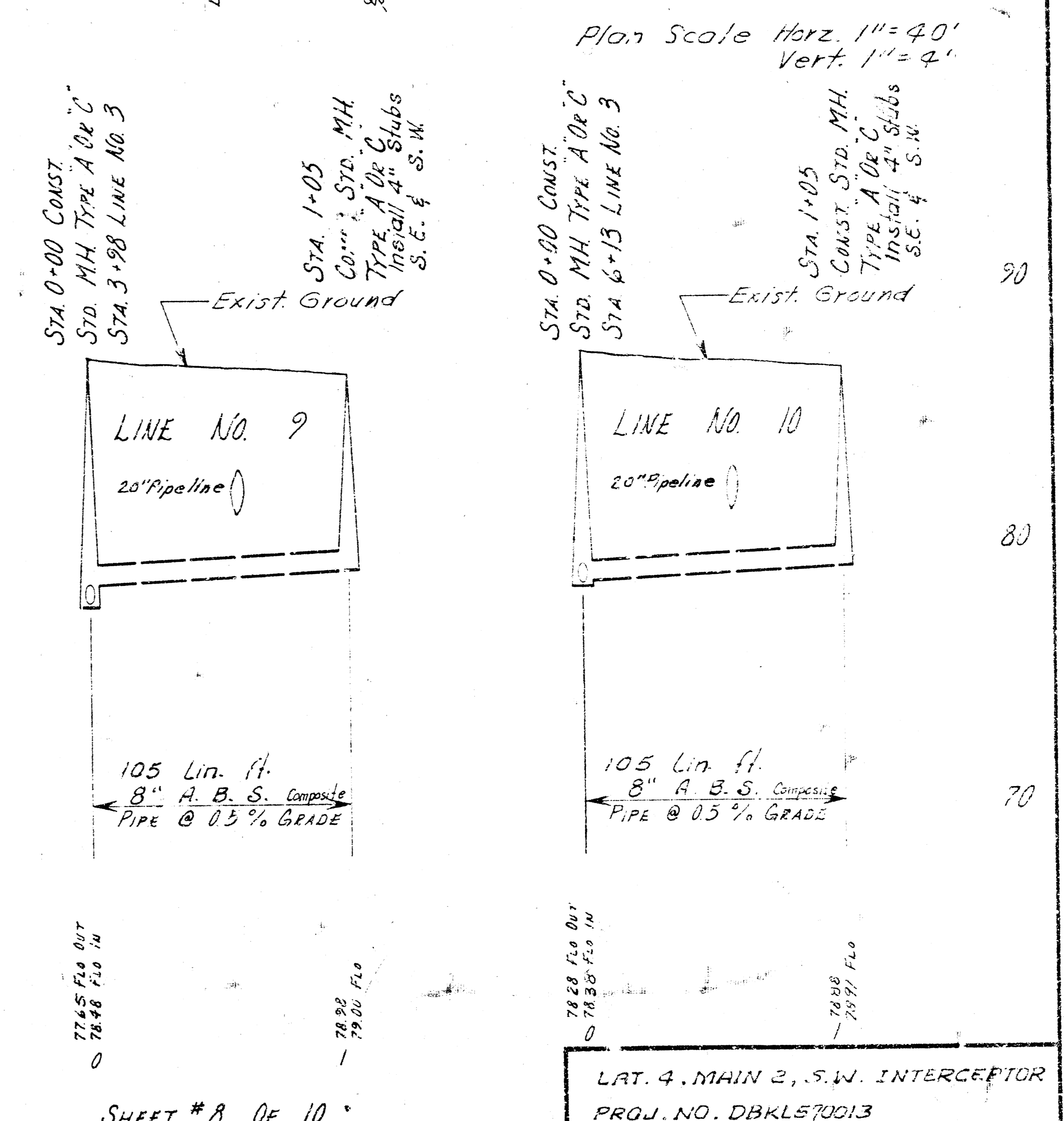
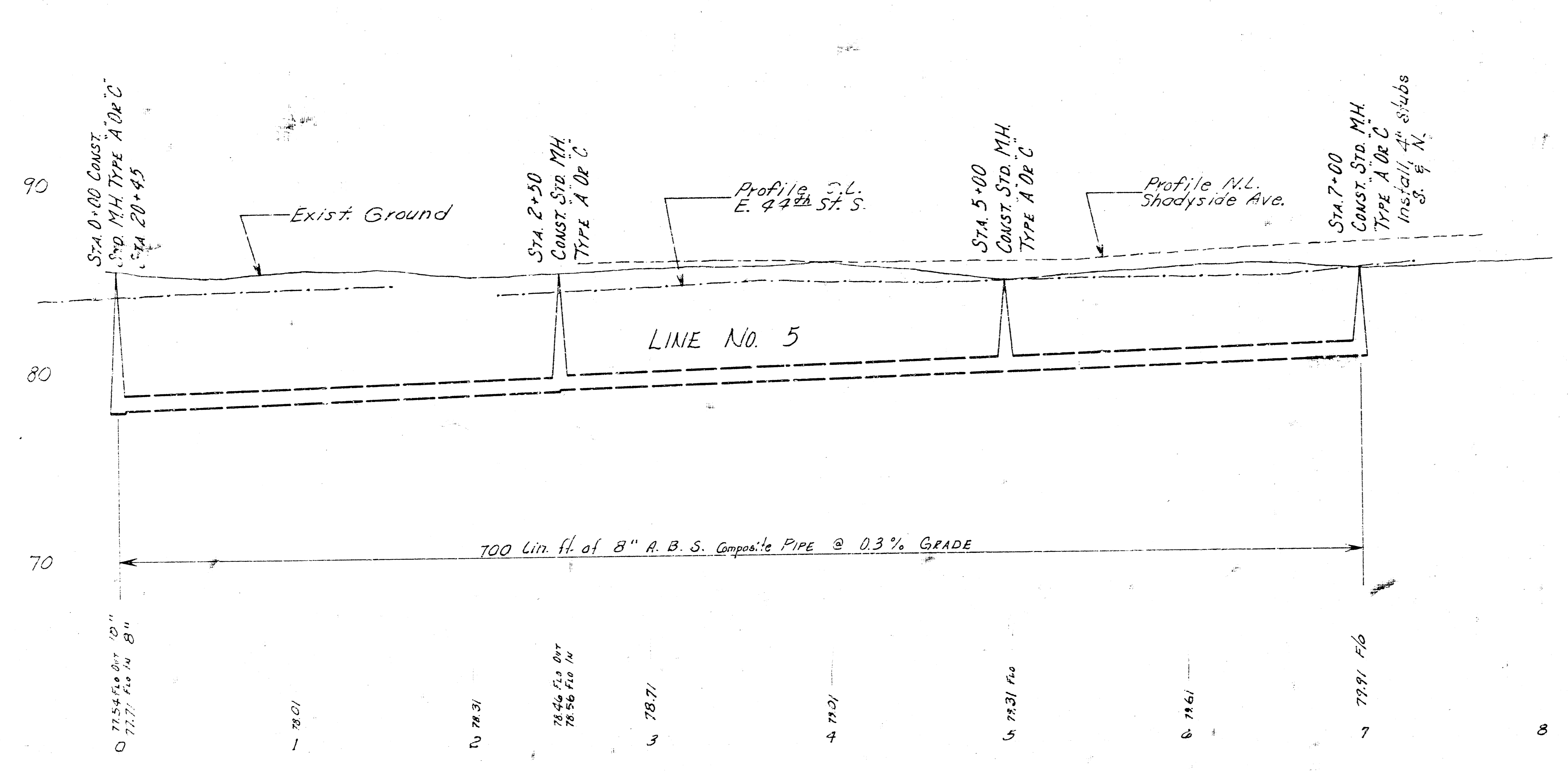


SHEET # 7 OF 10

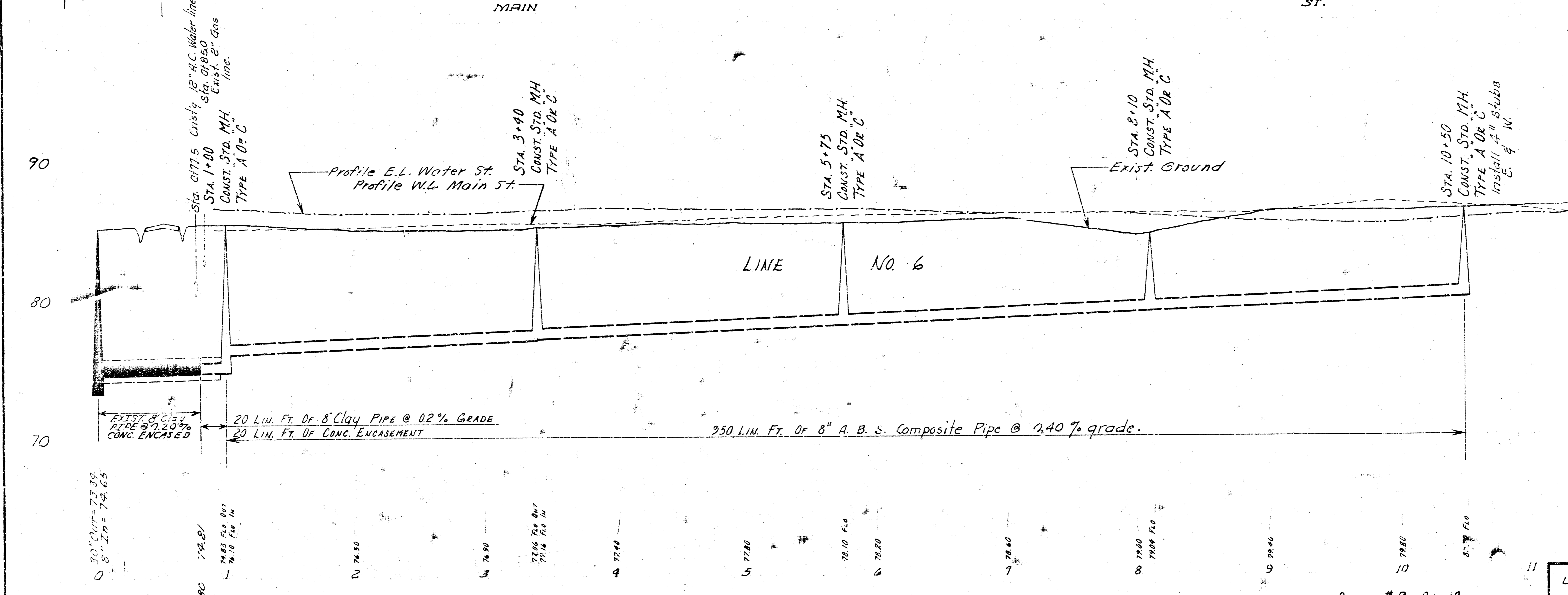
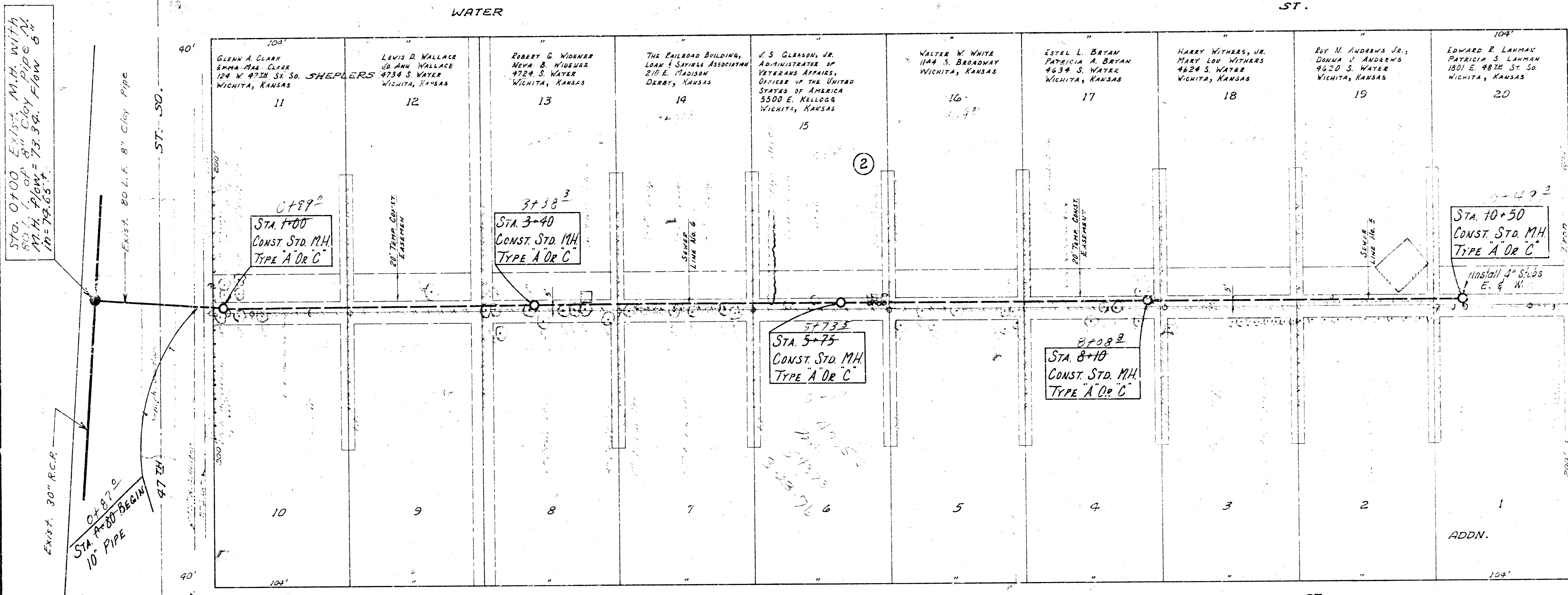
LAT. 4, MAIN 2, S.W. INTERCEPTOR
PROJ. NO. DBKL570013



B.M. 85.73 Steppench S.E. side of RR at S.E. corner of Lot 25, Blk. C, South Broadway Gardens Second Addition.



B.M. 85.80 R.R. Spike on E.S. of P.P. at S.W. corner of Lot 10, Block 2, Sheplers Addition.



Plan Scale Horiz. 1"=40'
Vert. 1"=4'

