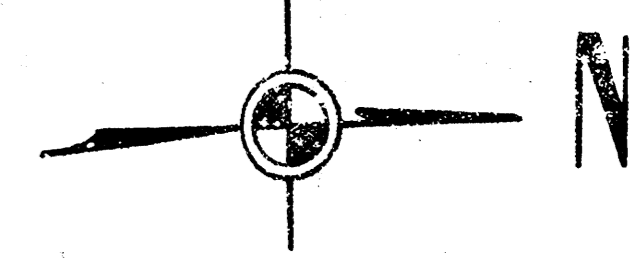
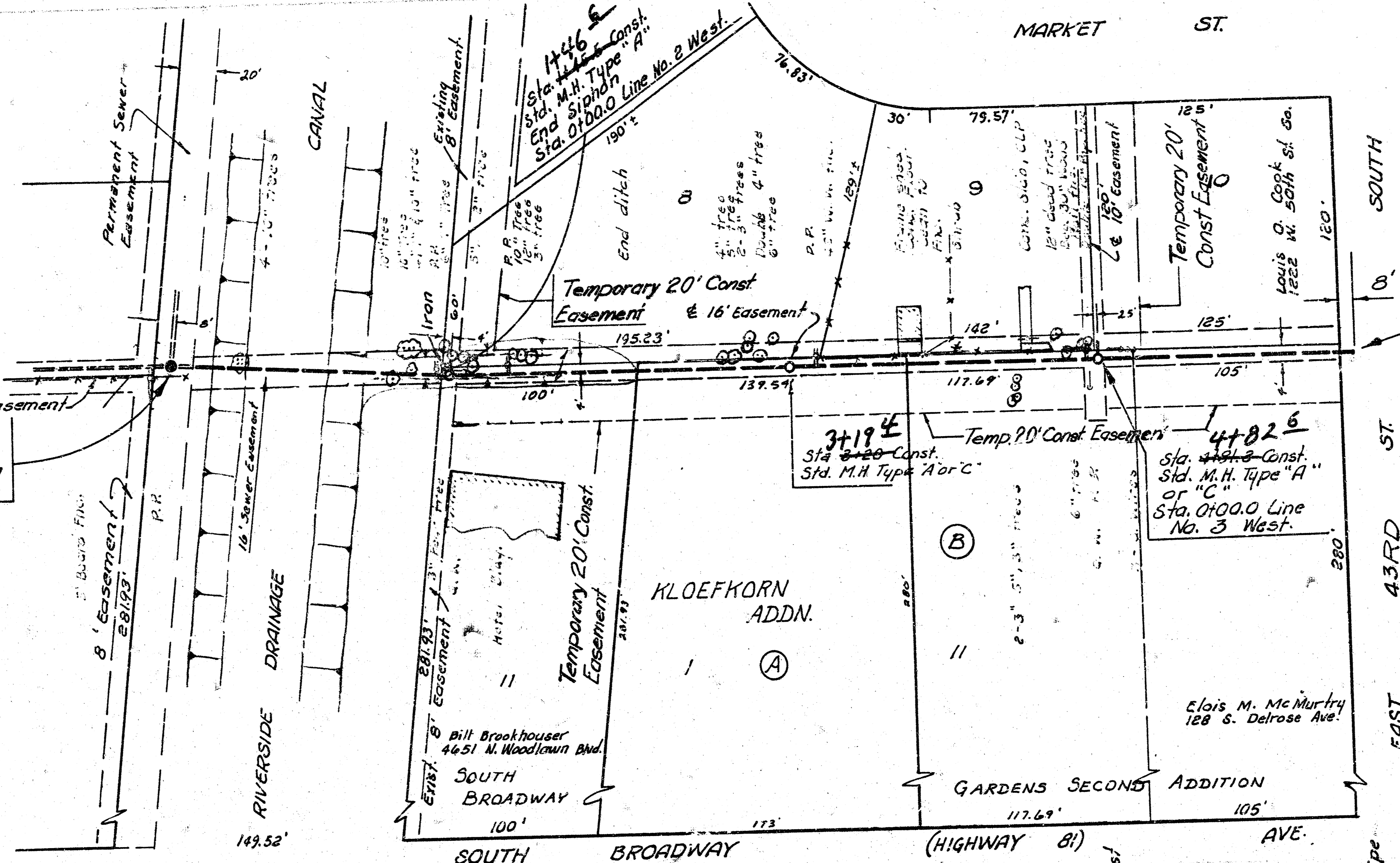


B. M. 88.30 "d" cut top S.E. cor. conc. base for Bidwell Village Sign on N.W. cor. Broadway & 43rd St. So.

B. M. 87.72 N.E. cor. Conc. Patch Ho # 4401 So. Market.



Plan Scale 1" = 40'
Profile Scale 1" = 40' Horiz.
1" = 5' Vert.



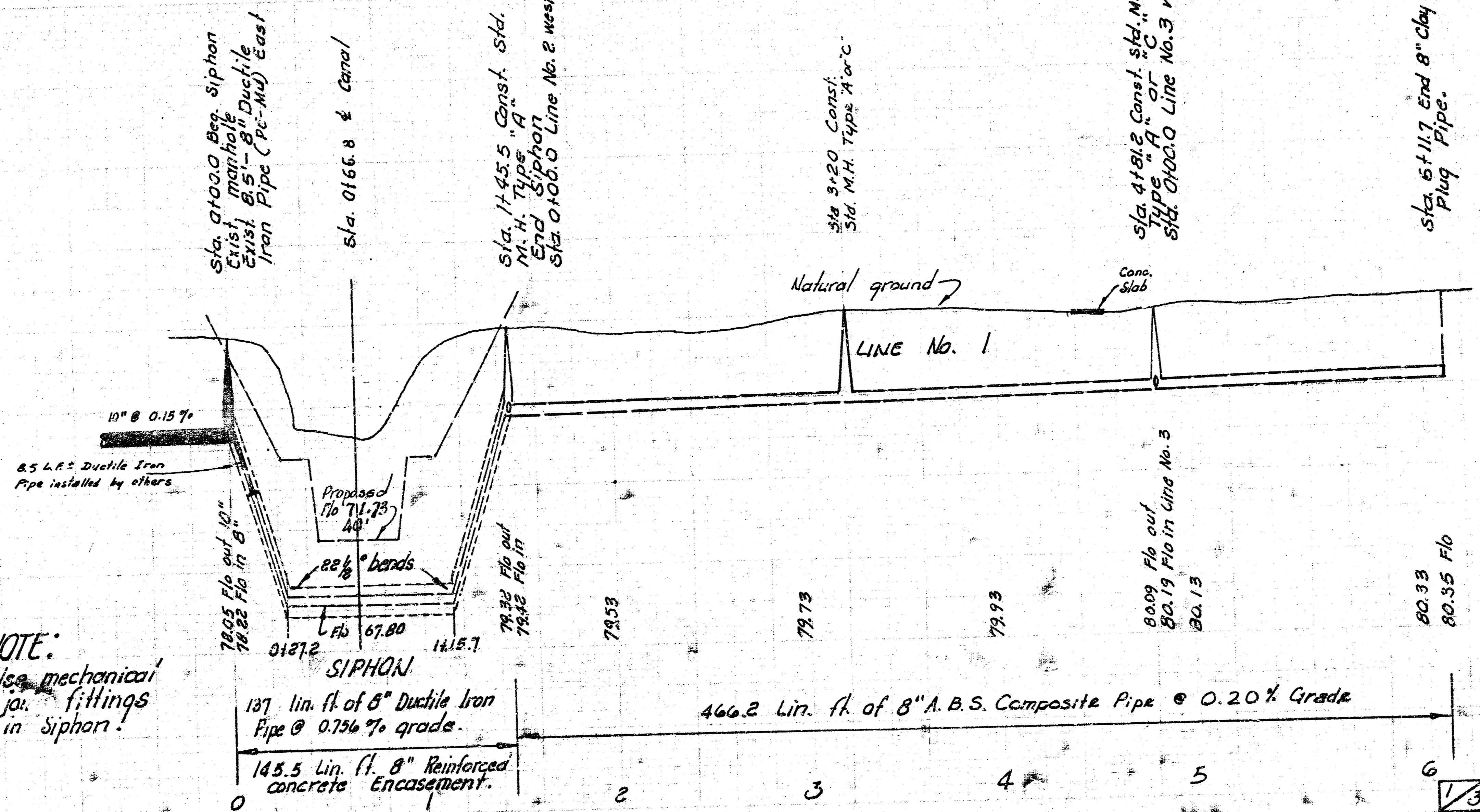
Sta. 0100.0 Beg. Siphon
Exist. manhole.
Exist. 8.5"-8" Ductile Iron pipe (PE-MU) east.

6+11.2
Sta. 6+11.7 End 8" A.B.S. Pipe Plug Pipe.

NOTE:
Owner of lot 8 and the south 100 ft. of lot 11 Block B wants all trees removed for fire place Wood.
City lateral across south 100 ft. of lot 11 Block B will cut Septic Tank main line and lateral field.

GENERAL NOTES
BACKFILL IN CHANNEL RIGHT-OF-WAY SHALL BE EXCAVATED MATERIAL COMPACTED TO A MINIMUM DENSITY OF 90% OF STANDARD DENSITY. COMPACTION OF EXCAVATED BACKFILL MATERIAL SHALL BE CONSIDERED AS SUBSIDIARY TO THE OTHER ITEMS OF WORK. EMP SUM BID FOR SIFON DOES NOT INCLUDE MANHOLE. AS SUBSIDIARY TO THE OTHER ITEMS OF WORK, CONTRACTOR WILL BE REQUIRED TO NOTIFY PROPERTY OWNERS MANHOLE WILL BE PAID FOR SEPARATELY. CONTRACTOR WILL BE REQUIRED TO NOTIFY PROPERTY OWNERS ADJACENT TO AND ALONG THE NORTH SIDE OF THE RIVERSIDE DRAINAGE CANAL SUFFICIENTLY IN ADVANCE OF CONSTRUCTION OF LINE #2 SUCH THAT THESE PROPERTY OWNERS MAY HAVE THE OPPORTUNITY TO TRANSPLANT SHRUBS AND TREES OR OTHERWISE SALVAGE IMPROVEMENTS ENDANGERED BY THE SEWER CONSTRUCTION. CONTRACTOR WILL ALSO BE REQUIRED TO NOTIFY THE OWNER OF LOT 6, BLOCK 9 OF THE NECESSITY OF MOVING THE SHED WITH A CONCRETE FLOOR OFF THE EASEMENT. THE PROPERTY OWNER SHALL BE GIVEN AN OPPORTUNITY TO MOVE THIS SHED PRIOR TO CONSTRUCTION OF THE SEWER. CONTRACTOR SHALL BE REQUIRED TO MOVE THIS SHED WITH A CONCRETE FLOOR AS A PART OF THIS CONTRACT IF IT IS NOT MOVED BY THE PROPERTY OWNER. THE SHED AND ITS CONCRETE FLOOR IN ITS NEW LOCATION SHALL BE EQUAL TO OR BETTER THAN ITS CONDITION IN THE ORIGINAL LOCATION. THE BID PRICE OF SHED MOVED (CONCRETE FLOOR) SHALL INCLUDE ALL COSTS FOR MOVING THIS SHED INCLUDING REMOVAL AND REPLACING THE CONCRETE FLOOR.

Field Engineer to make 'ties' to all irons.
Irons disturbed or destroyed are to be replaced.
Contractor shall not remove any trees without prior approval from the Field Engineer.



NOTE:
Use mechanical joint fittings in Siphon.

As built 4-27-77

LAT. 6, MAIN 2, S. W. INTERCEPTOR SEWER
CITY OF WICHITA, KANSAS

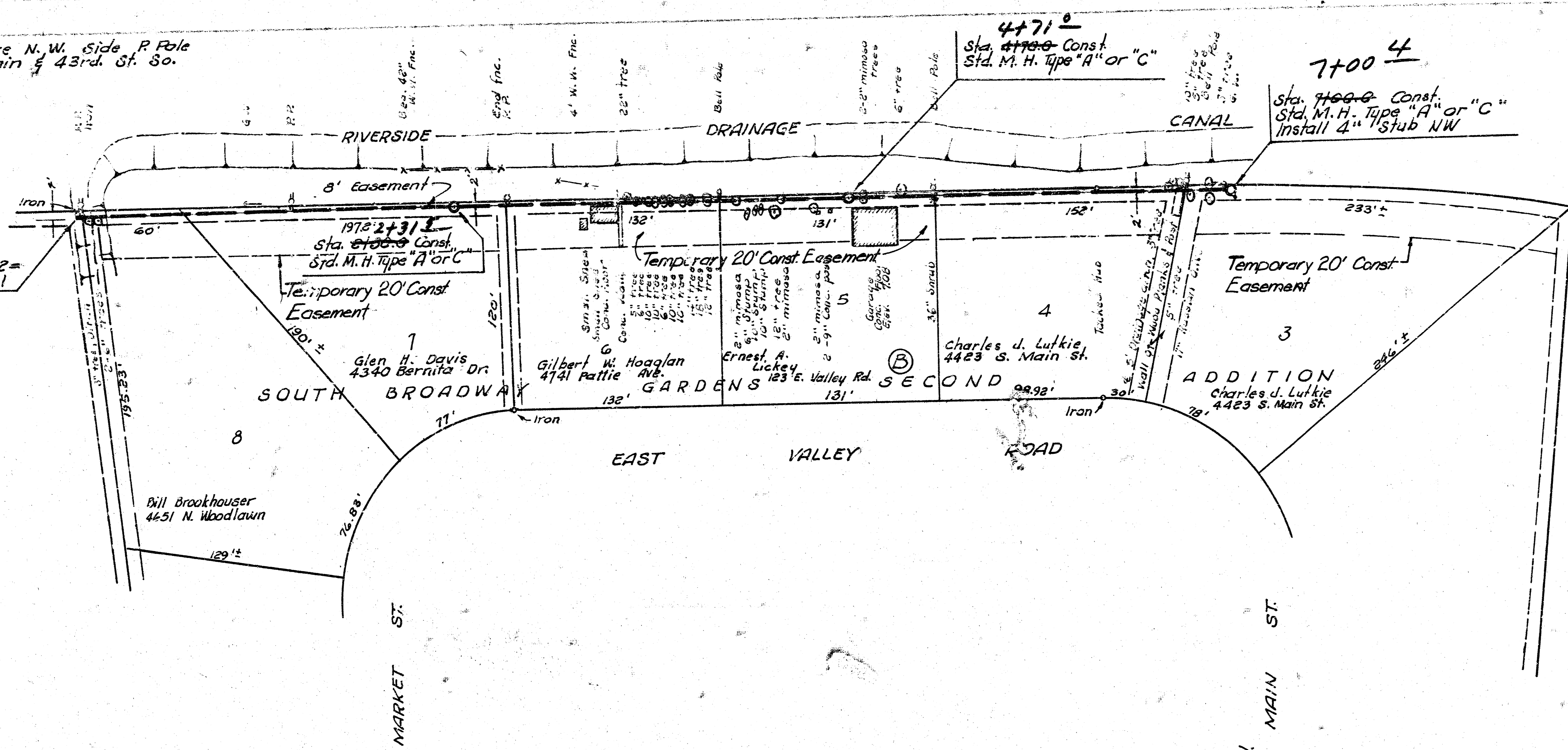
R. W. LINN — CITY ENGINEER
MARCH 1975 PROJECT NO. DBKL 57 20 2



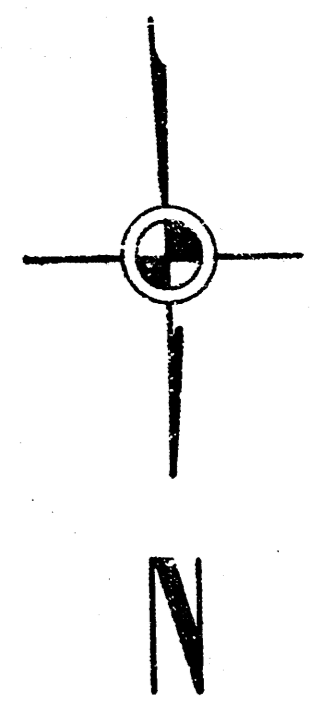
90
85
80
75
70
65

B. M. 8998 R. R. Spike N. W. Side P Pole
on S. E. cor Main & 43rd St. So.

Sta. 0+00.0 Line No 2 =
Sta. 1+45.5 Line No. 1



C. R. I. & P.



Sta. 0+00.0 Line No. 2 =
Sta. 1+57.5 Line No. 1

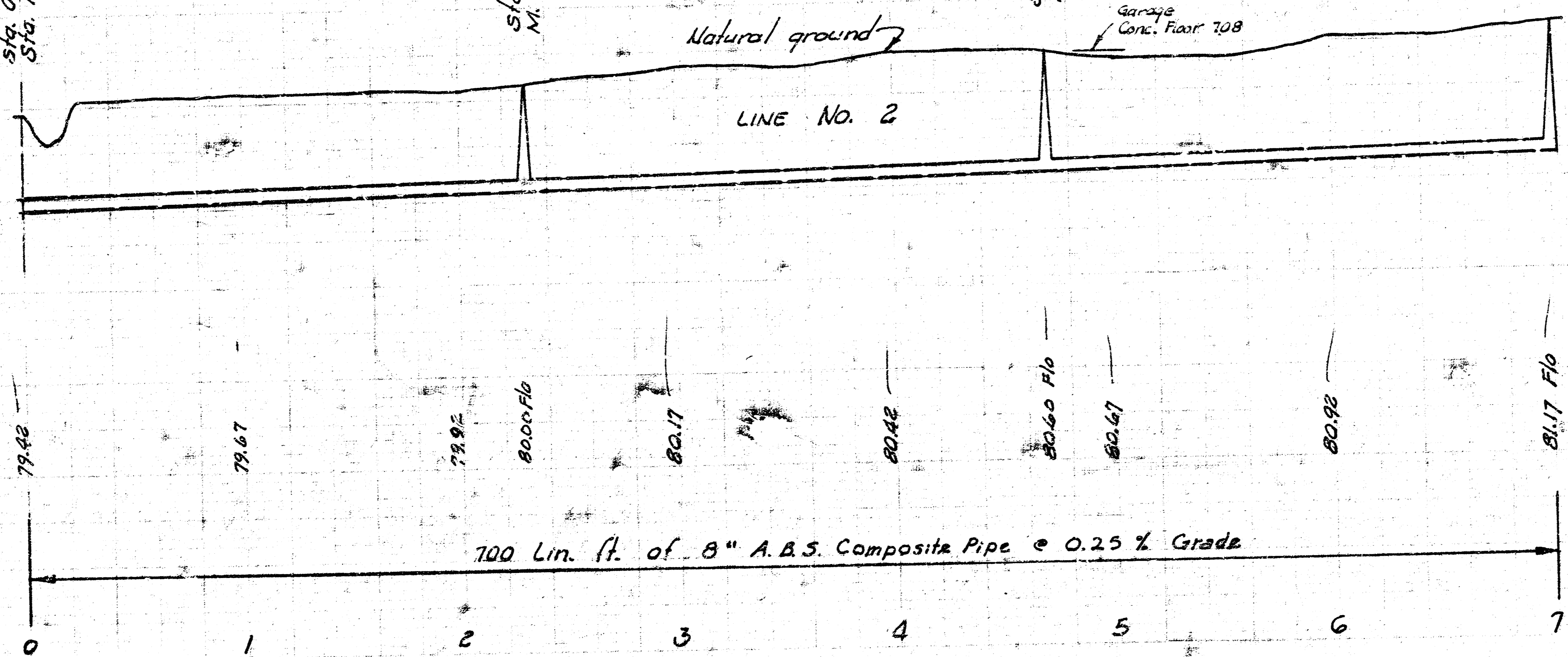
Sta. 2+30.0 Const. Std.
M. H. Type "A" or "C"

Sta. 4+70.0 Const. Std.
M. H. Type "A" or "C"

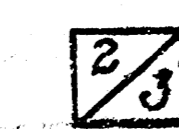
Sta. 7+00.0 Const. Std.
M. H. Type "A" or "C"
Install 4" Stub NW

90
85
80
75

90
85
80
75

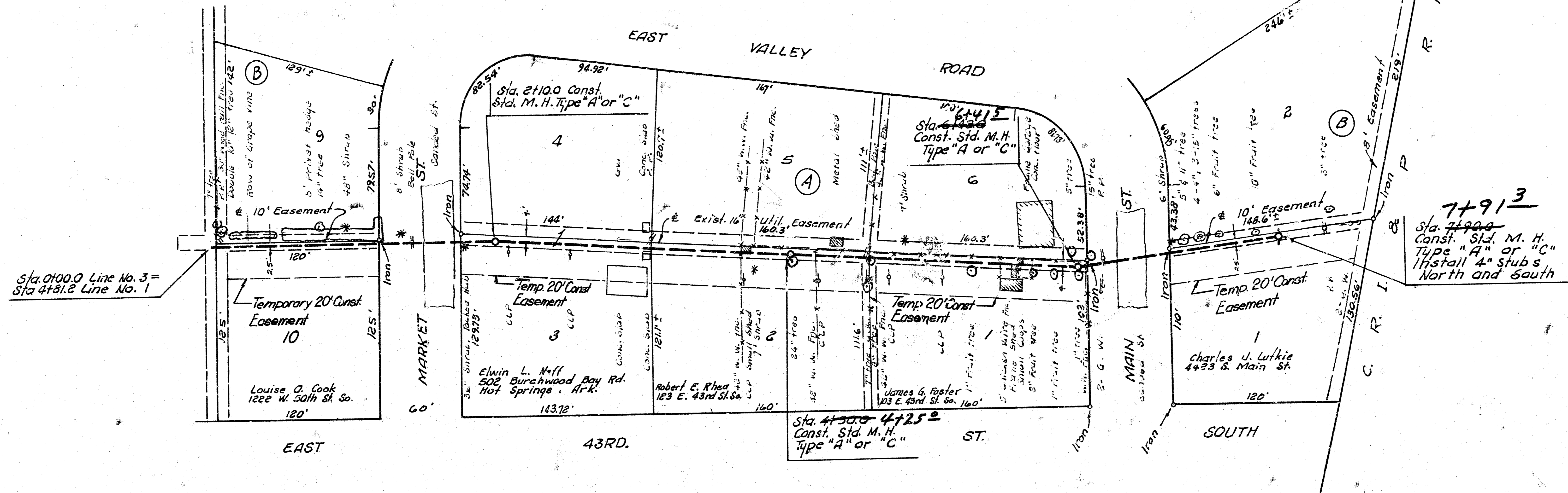


LAT. 6, MAIN 2, S. W. INTERCEPTOR SEWER
PROJECT NO. DBKL572023



B. M. 85.98 R. R. Spike N.W. side P. Pole on S. E. cor. Main & 43rd St. So.

SOUTH BROADWAY GARDENS SECOND ADDITION



Sta. 0100.0 Line No. 3 = Sta. 4191.2 Line No. 1

77913
Sta. 7790.0 Const. Std. M. H. Type "A" or "C" Install 4" stubs North and South

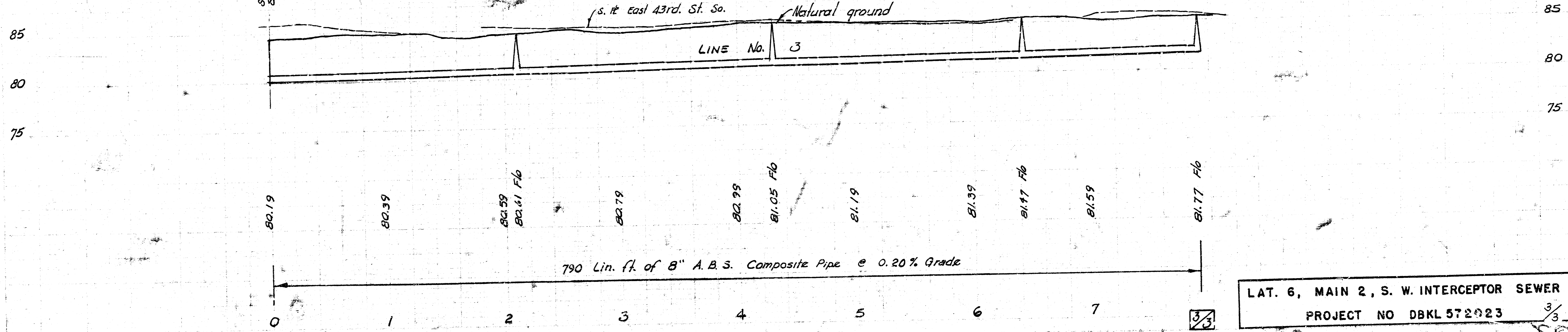
Sta. 0100.0 Line No. 3 = Sta. 4191.2 Line No. 1

Sta. 2100 Const. Std. M. H. Type "A" or "C"

Sta. 4190.0 Const. Std. M. H. Type "A" or "C"

Sta. 6142.0 Const. Std. M. H. Type "A" or "C"

Sta. 7790.0 Const. Std. M. H. Type "A" or "C" Install 4" stubs North and South



LAT. 6, MAIN 2, S. W. INTERCEPTOR SEWER
PROJECT NO DBKL 572023