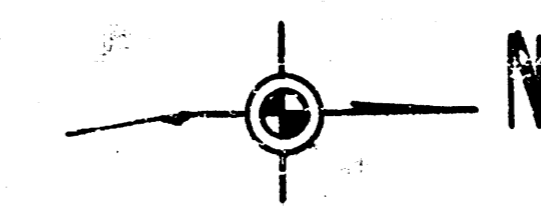


B.M. 86.90 "+" cut in S.W. cor. conc. Pd. Auto Parts Store.

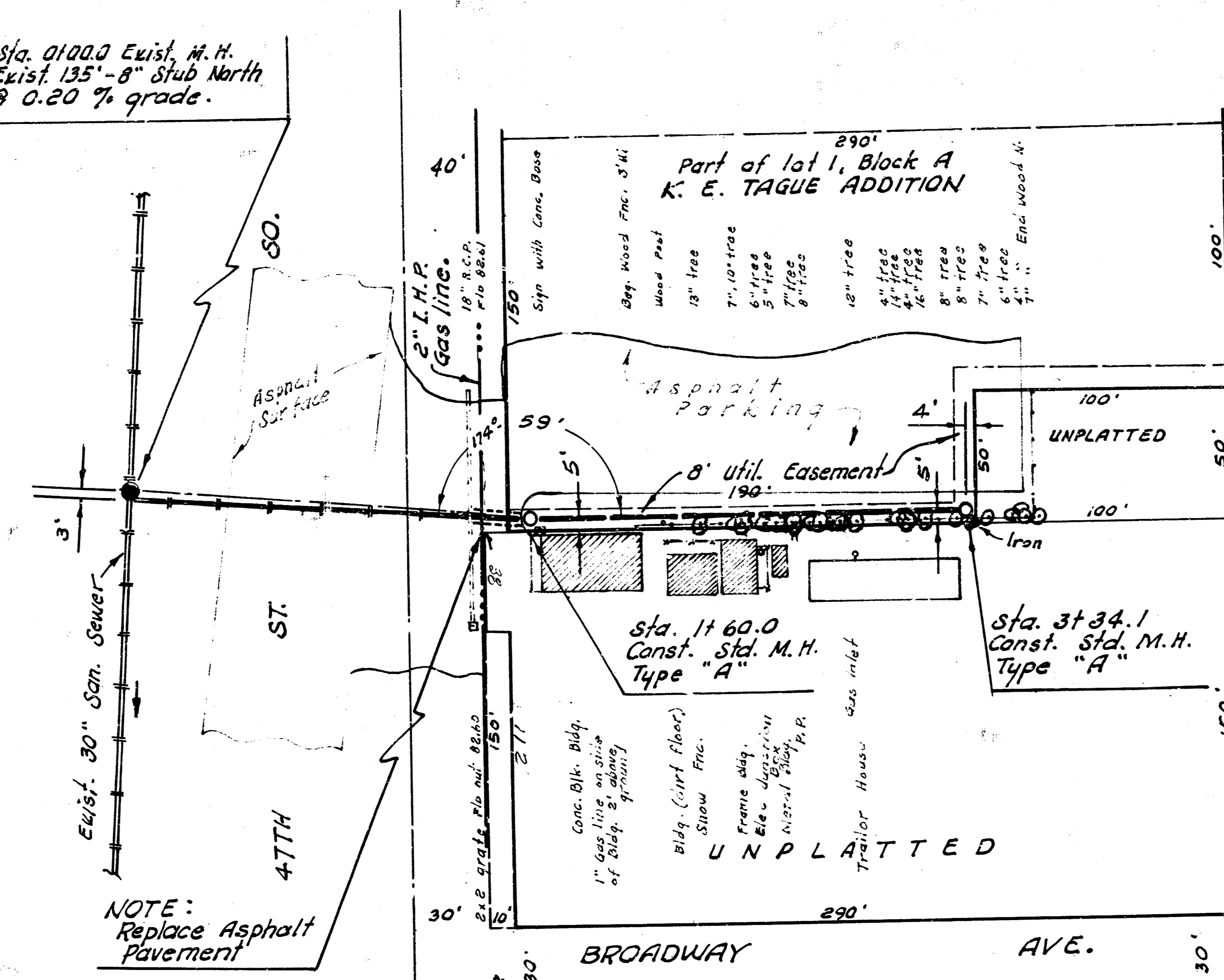
Sta. 0100.0 Exist. M.H.  
Exist. 135'-8" Sub North  
@ 0.20 % grade.



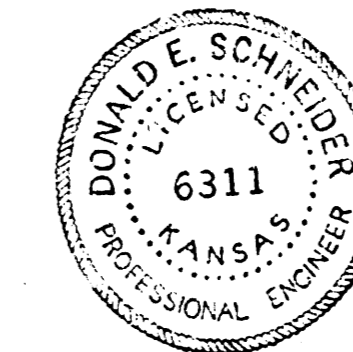
Plan Scale 1" = 40'  
Profile Scale 1" = 40' Horiz.  
1" = 5' Vert.

U.A.F. v. R.W.

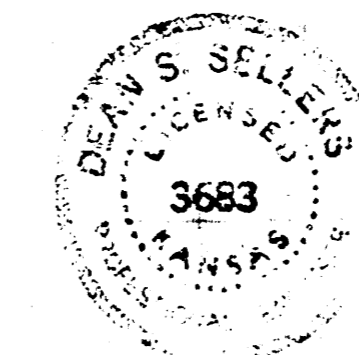
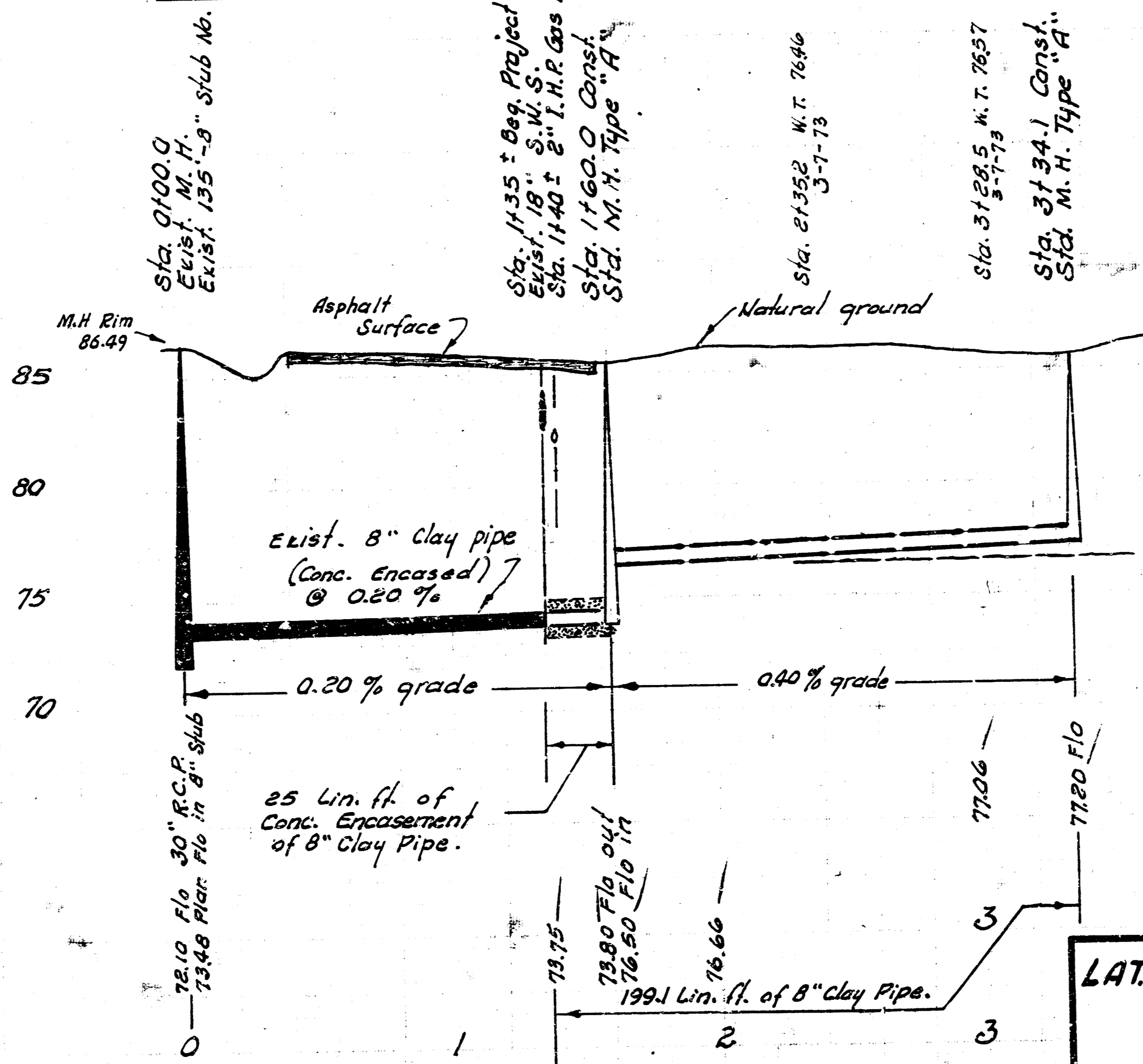
43



NOTE TO FIELD ENGINEER AND CONTRACTOR  
All sand backfill for this project shall be included in the price bid, per linear foot of clay pipe, and shall include the cost of sand, placing, jetting and vibrating and all necessary tools and labor to complete the backfill.



NOTE:  
Replace Asphalt Pavement



LAT. 7, MAIN 2, S.W. INTERCEPTOR SEWER  
CITY OF WICHITA, KANSAS  
R. W. LINN - CITY ENGINEER  
APRIL 1973 PROJECT NO. DBK1572081

12-Eng  
1-water

FILMED FROM THE BEST AVAILABLE COPY