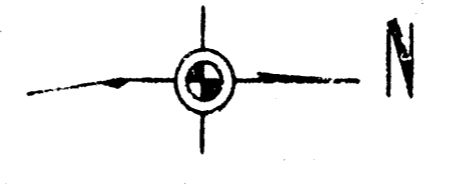
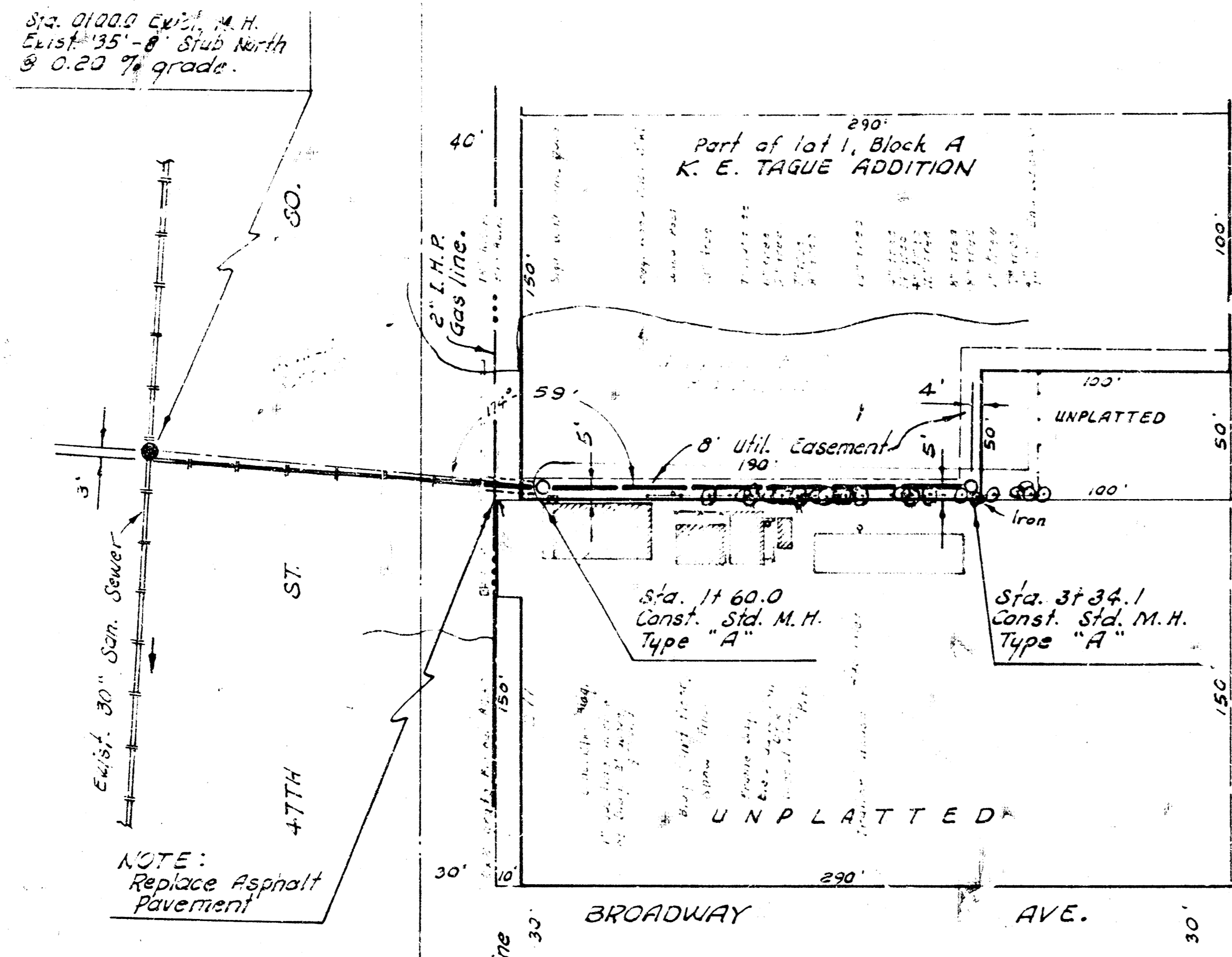


B.M. 2690 "f" cut in S.W. cor. conc. Pk. Auto Parts Store.



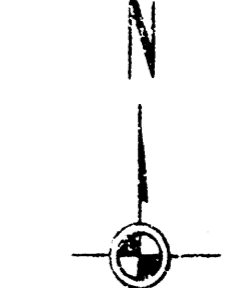
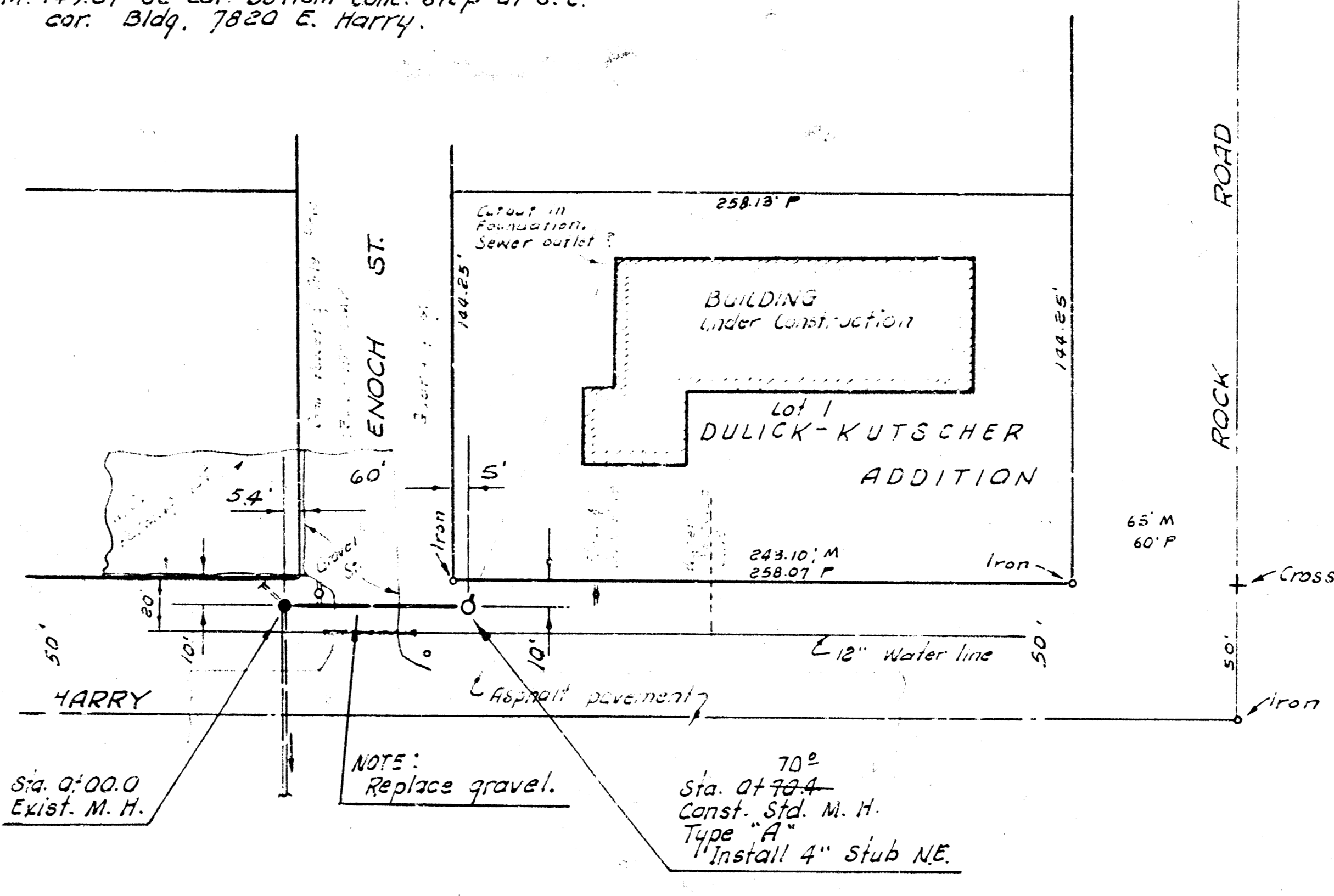
Plan Scale 1"=40'
Profile Scale 1"=5' Vert.

NOTE TO FIELD ENGINEER AND CONTRACTOR
All sand backfill for this project shall be included in the price bid, per linear foot of clay pipe, and shall include the cost of sand, placing, jitting and vibrating and all necessary tools and labor to complete the backfill.

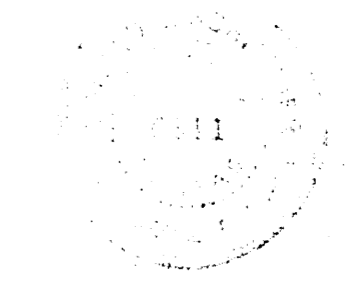


B.M. 145.38 "f" top W-End Handrail, R.C.B.C. on Harry 238' E. of Rock Rd.
B.M. 149.79 "M" in Mueller Fire Hydrant N.W. cor. Rock Rd. & Harry.
B.M. 149.87 SE cor. bottom conc. Step of S.E. cor. Bldg. 7820 E. Harry.

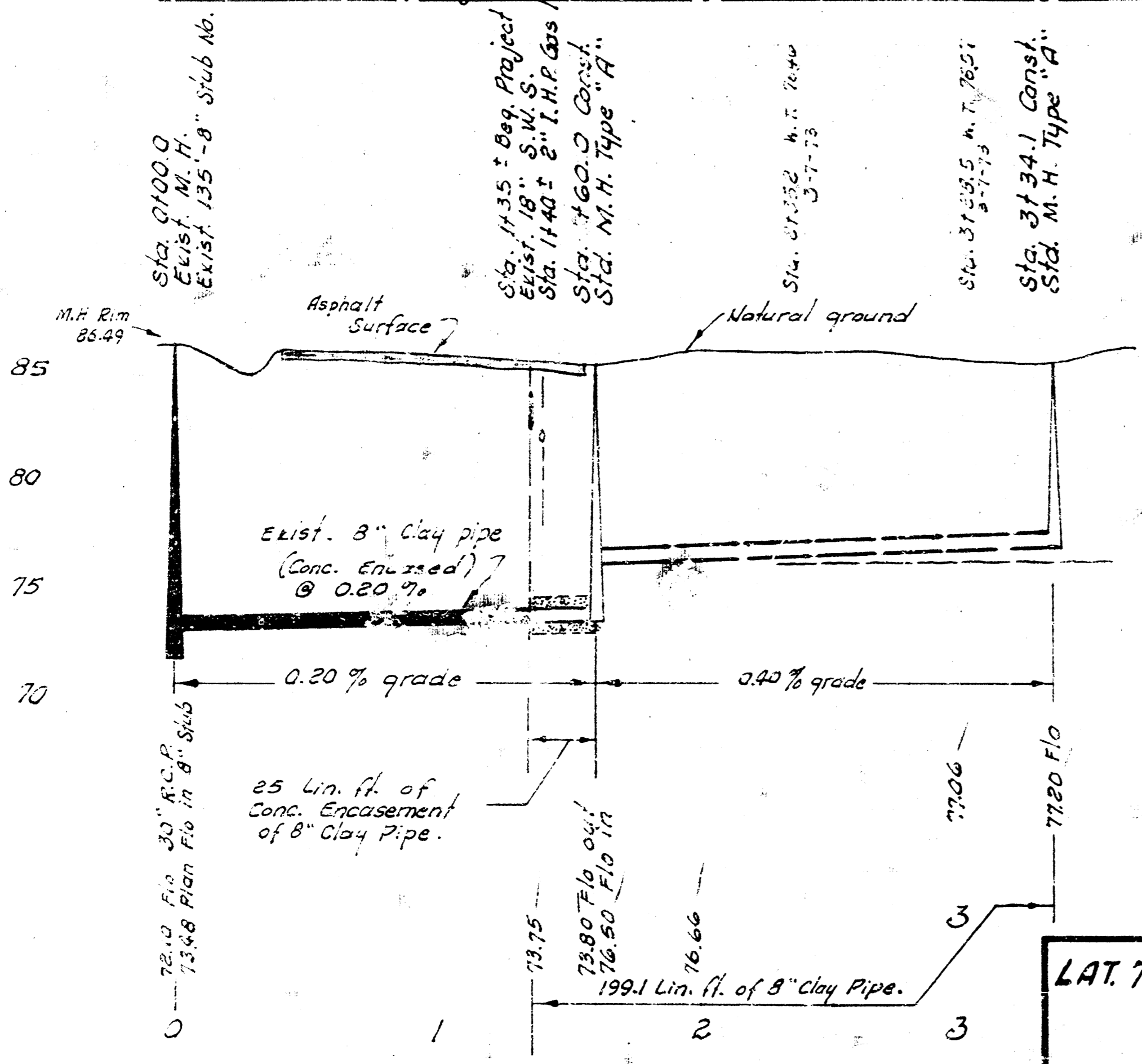
Survey by A.C.K. Bk. D.L.K. 123
Plan by J.R.W.
Checked by _____



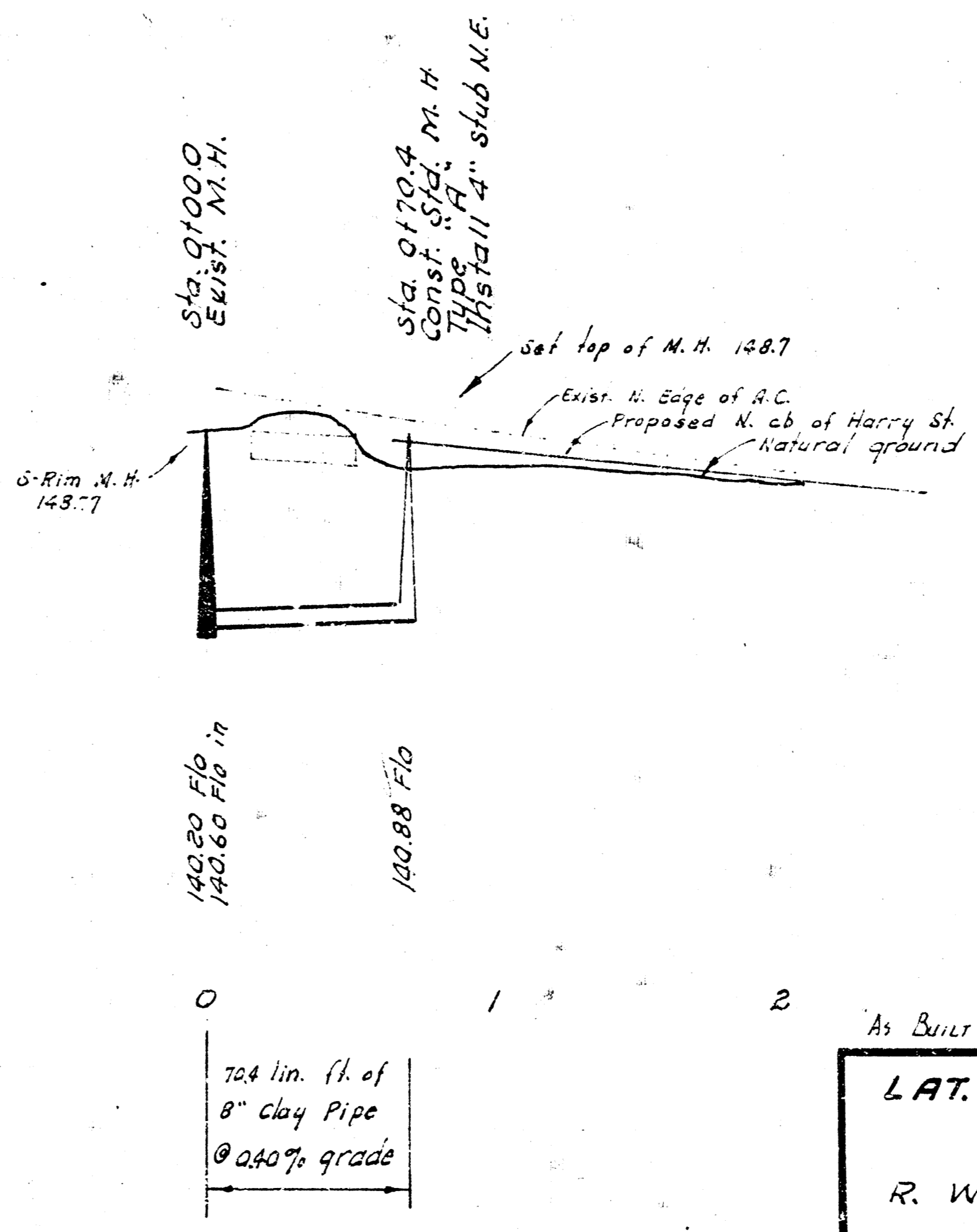
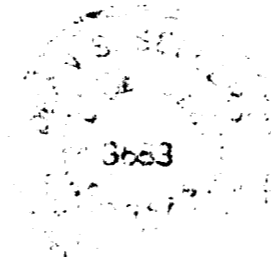
Plan Scale 1"=40'
Profile Scale 1"=5' Vert.



DATE: 4.11.73



LAT. 7, MAIN 2, S.W. INTERCEPTOR SEWER
CITY OF WICHITA, KANSAS
R. W. LINN - CITY ENGINEER
APRIL 1973 PROJECT NO. DBK L 572081



LAT. 8, MAIN 16, WAR INDUSTRIES SEWER
CITY OF WICHITA, KANSAS
R. W. LINN - CITY ENGINEER
FEB. 1973. PROJECT NO. DBK L 572077

