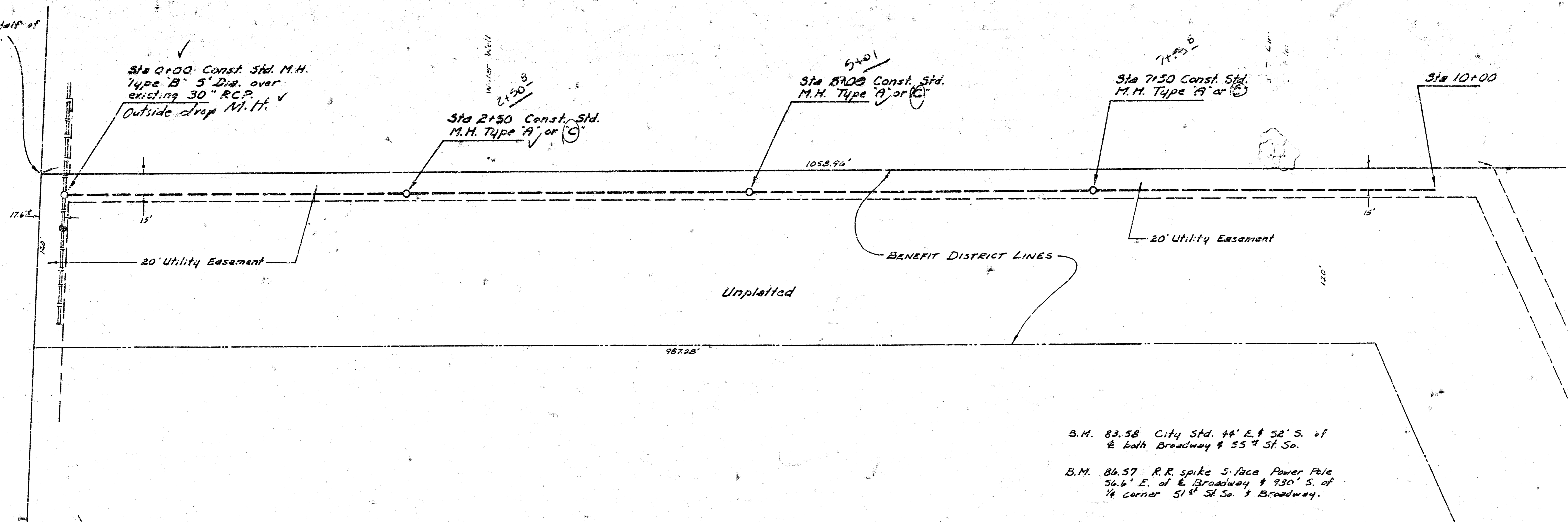


REVISED JUNE 26, 1978

Scale Plan 1" = 40'
Profile 1" = 40' Hor.
1" = 5' Vert.

396' 11" of S.L. of North Half of SW 1/4, Sec 21, T28N R1E.

RIVERSIDE DRAINAGE CANAL



B.M. 83.58 City Std. 44' E. & 52' S. of E. both Broadway & 55th St. So.

B.M. 86.57 R.R. spike S. face Power Pole 56.6' E. of E. Broadway & 930' S. of 1/4 corner 51st St. So. & Broadway.

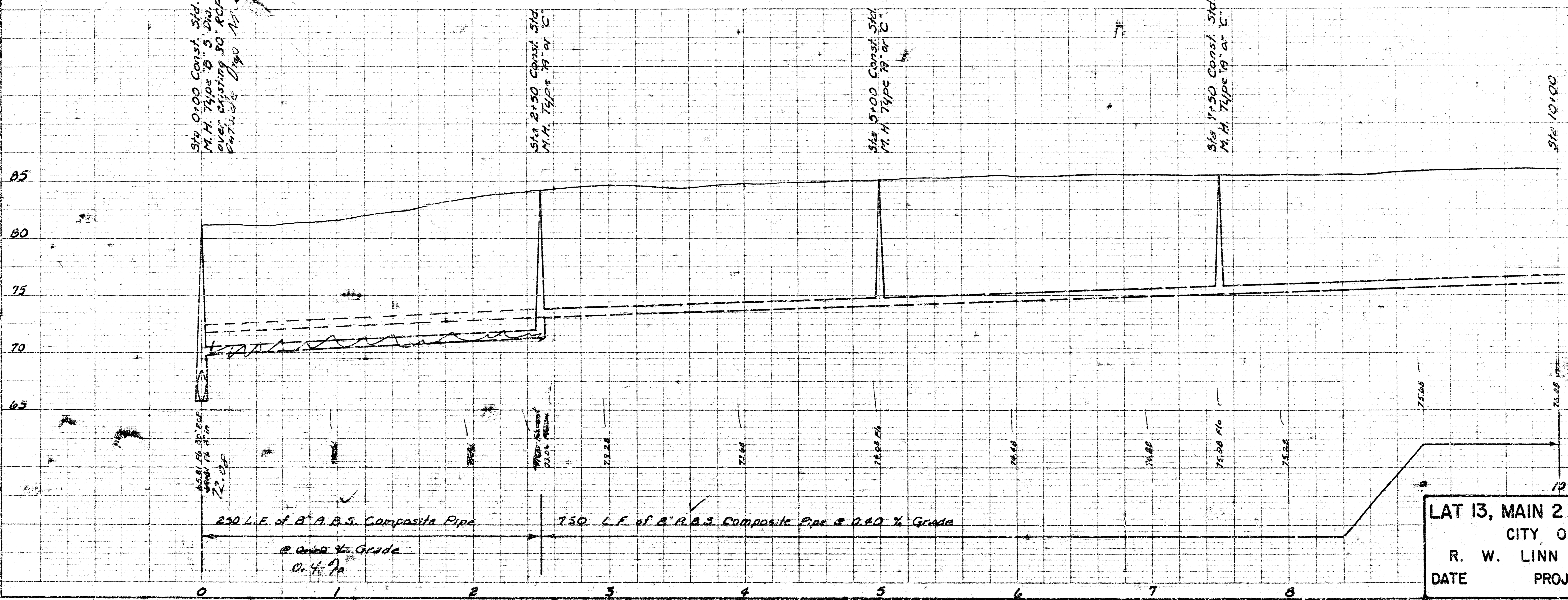
Sta 0+00 Const. Std. M.H. Type B 5" Dia. over existing 30" RCP. Outside Drop M.H.

Sta 2+50 Const. Std. M.H. Type A or C

Sta 5+01 Const. Std. M.H. Type A or C

Sta 7+50 Const. Std. M.H. Type A or C

Sta 10+00



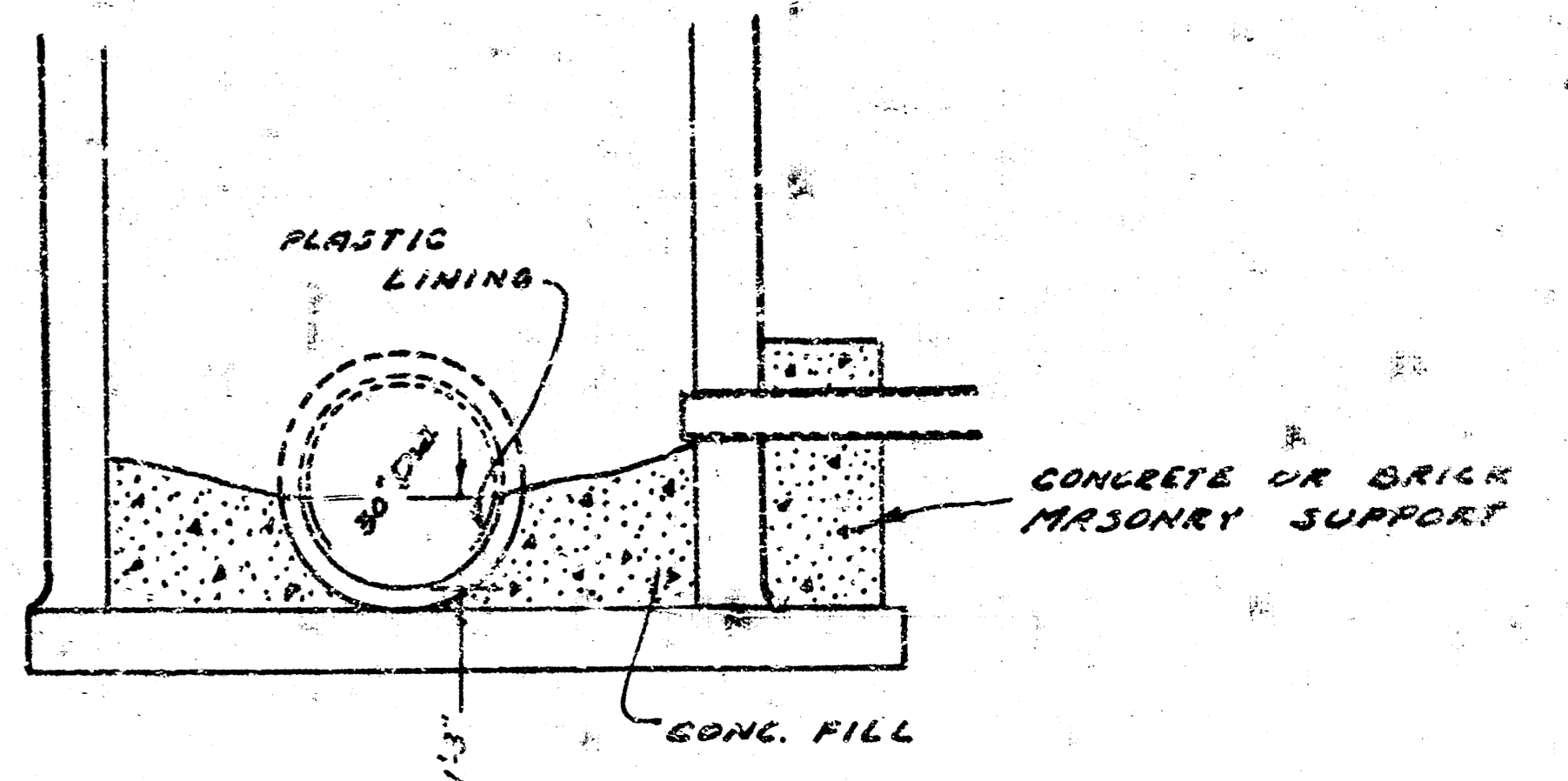
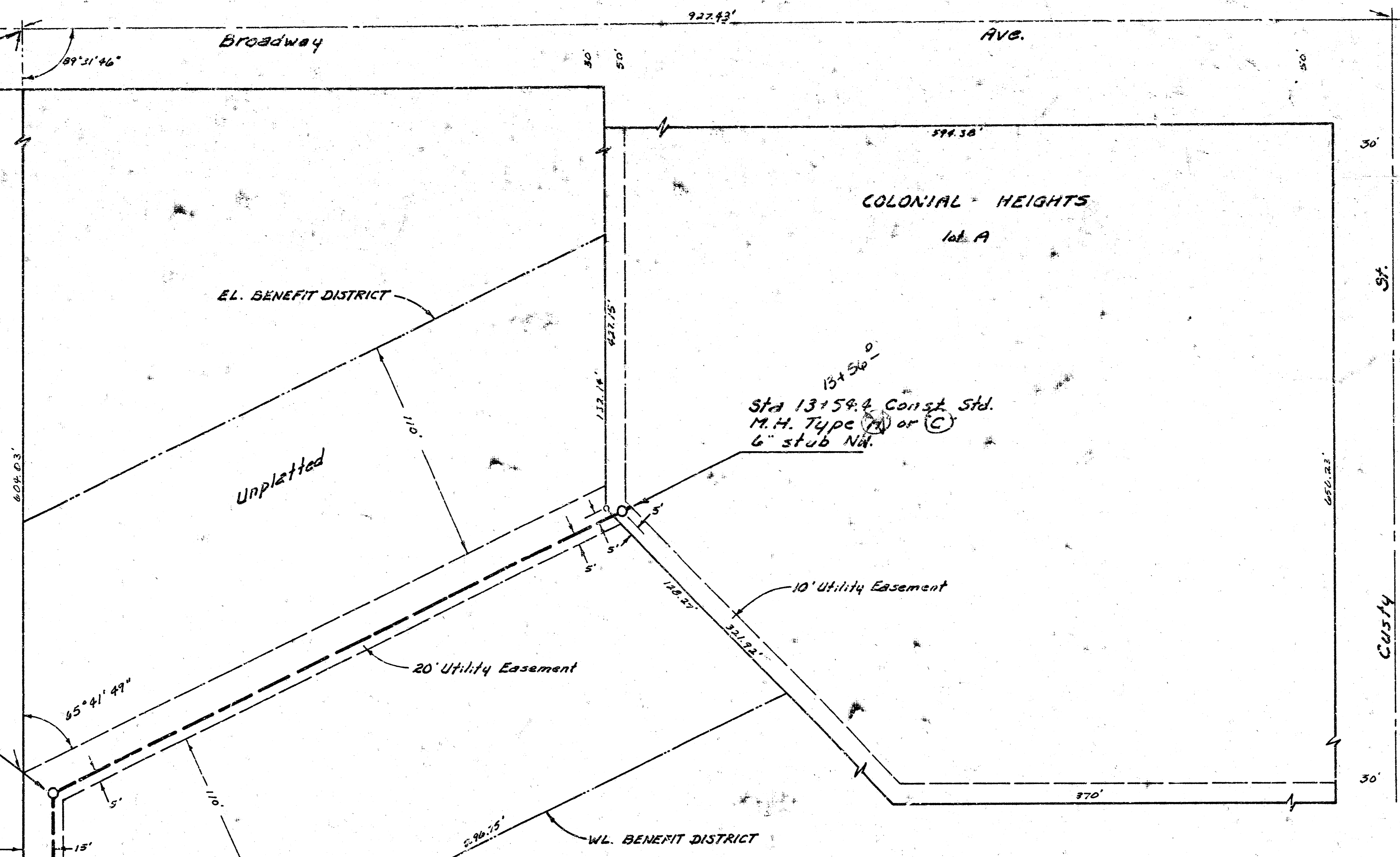
AS BUILT
4/7/79
D 80
C 8

LAT 13, MAIN 2, SW. INTERCEPTOR SE
CITY OF WICHITA, KANSAS
R. W. LINN — CITY ENGINEER
DATE PROJ. NO. 468-76-245-80498-0000

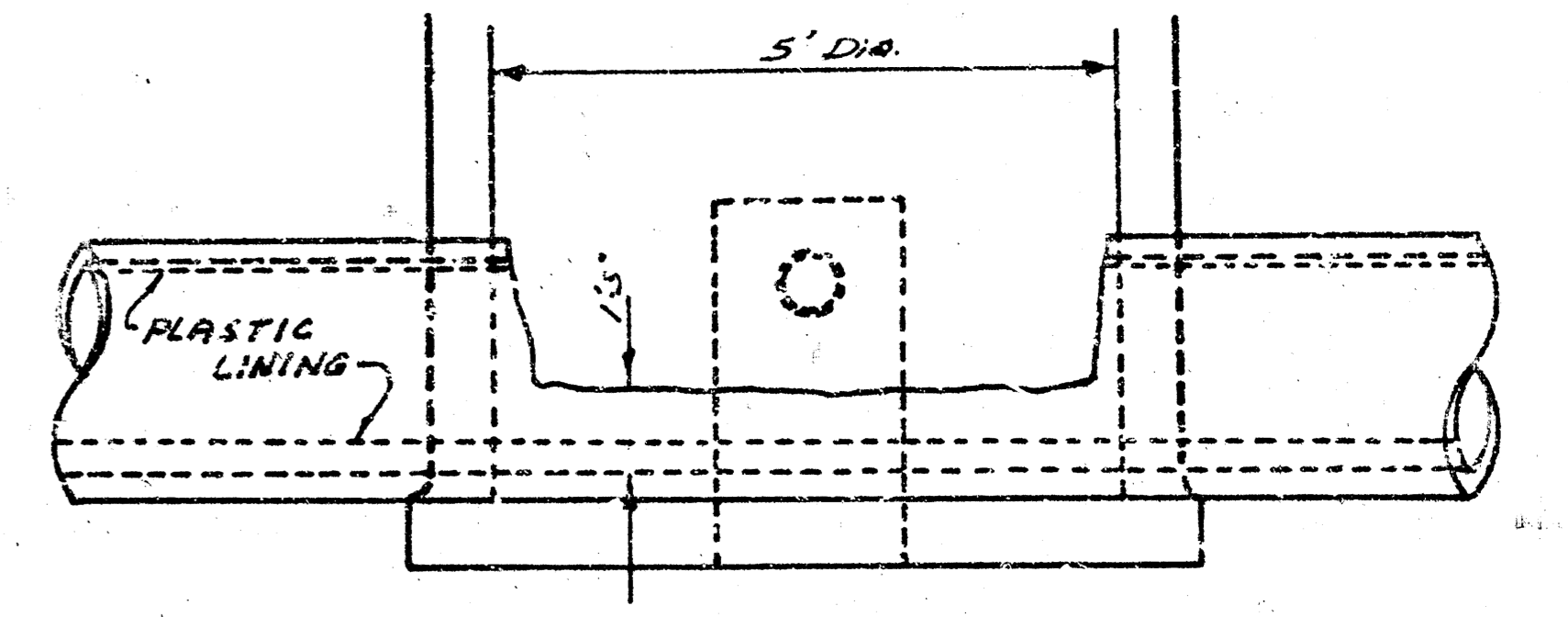
REVISED JUNE 26, 1918

396' N. of S.W. Corner of North Half of SW 1/4, Sec 21, T20 S, R1E.

Scale Plan 1" = 40' Profile 1" = 40' Horiz. 1" = 5' Vert.



SECTION Sta 0+00 3rd. M.H. Type 'B', 5' Dia.



NOTE: All exposed concrete pipe surface to be protected with Plastic Lining approved by the Field Engineer.

Method of removing top 1/2 of 30" RCR is to be approved by the Field Engineer.

Outside of brick manhole at 0+00 shall be given two coats of Bitumastic Super Service Black as manufactured by Koppers Chemicals and Coatings or an approved equal. Application shall be according to manufacturer's recommendations.

Wijp-Bond Bentonite as manufactured by Archer Daniels Midland Co. or an approved equal shall be mixed with the backfill material lying below water table elevation at the manhole location at Sta 0+00. Approximately 40 pounds of Bentonite is to be uniformly mixed with the backfill material.

