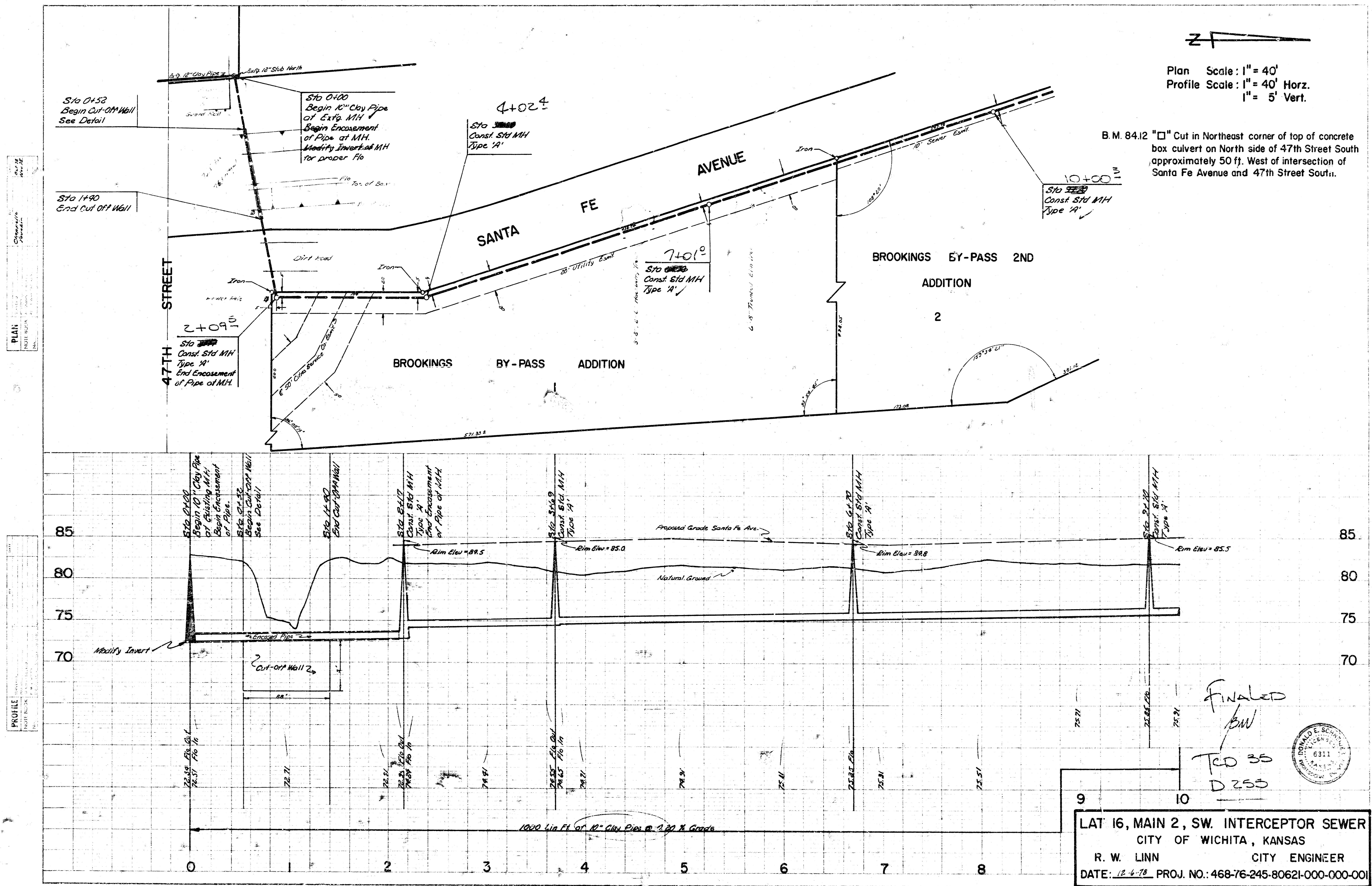


Plan Scale: 1" = 40'
 Profile Scale: 1" = 40' Horz.
 1" = 5' Vert.

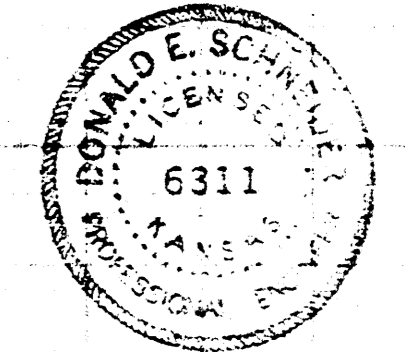
B.M. 84.12 "□" Cut in Northeast corner of top of concrete box culvert on North side of 47th Street South approximately 50 ft. West of intersection of Santa Fe Avenue and 47th Street South.



FINALED
 BW
 TRD 35
 D 255

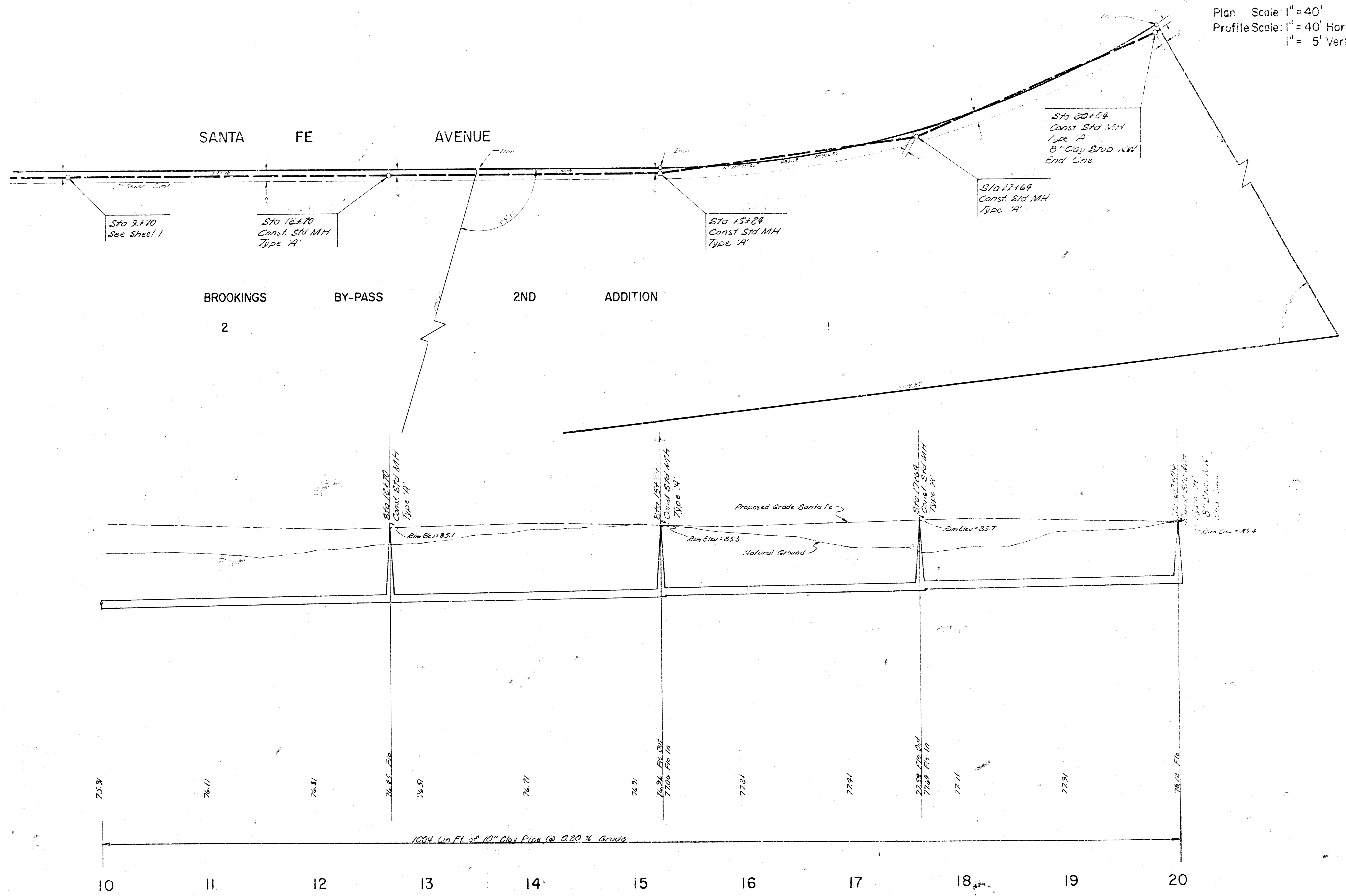
9 10

LAT 16, MAIN 2, SW. INTERCEPTOR SEWER
 CITY OF WICHITA, KANSAS
 R. W. LINN CITY ENGINEER
 DATE: 12-6-78 PROJ. NO.: 468-76-245-80621-000-000-001

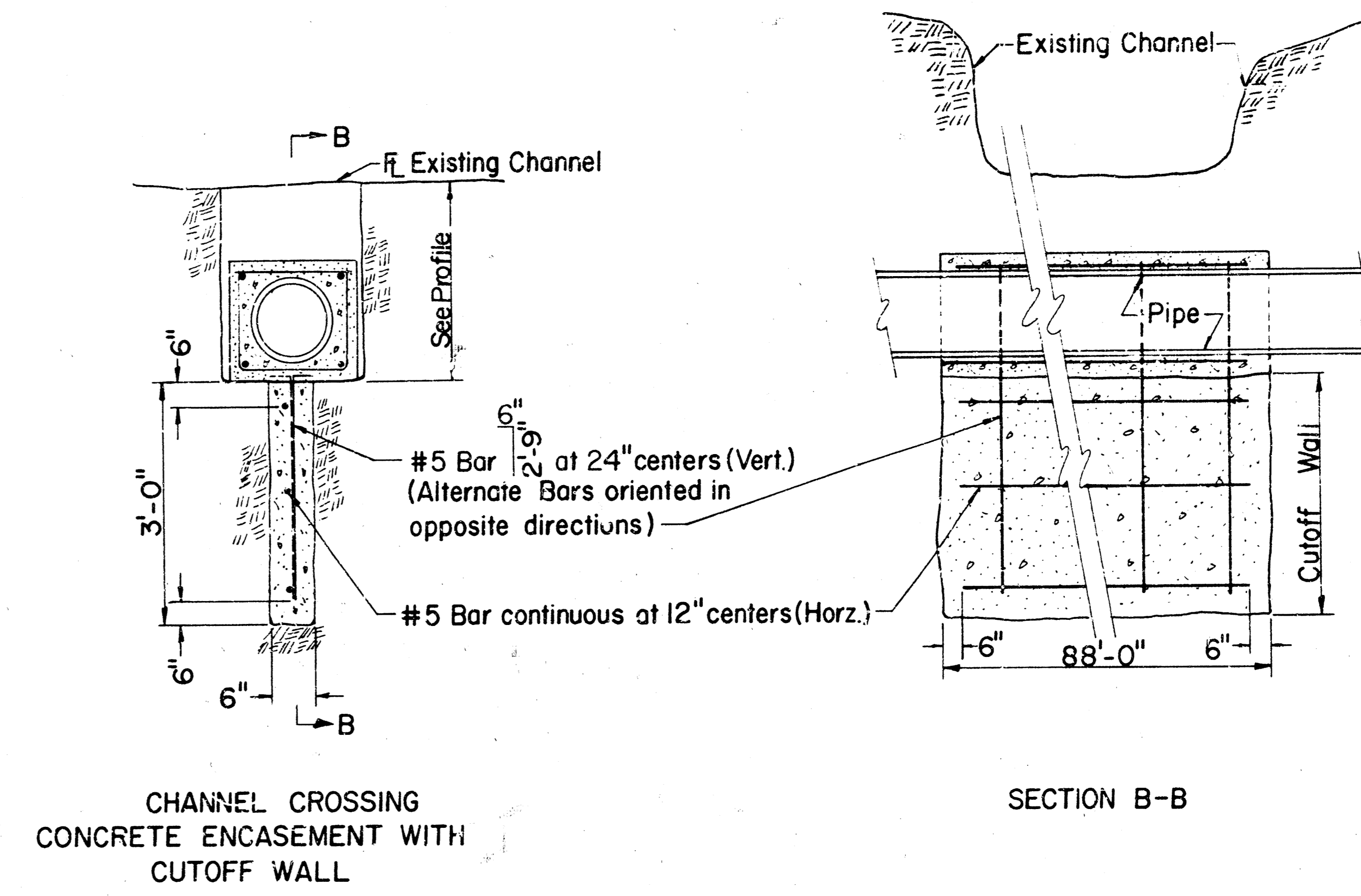


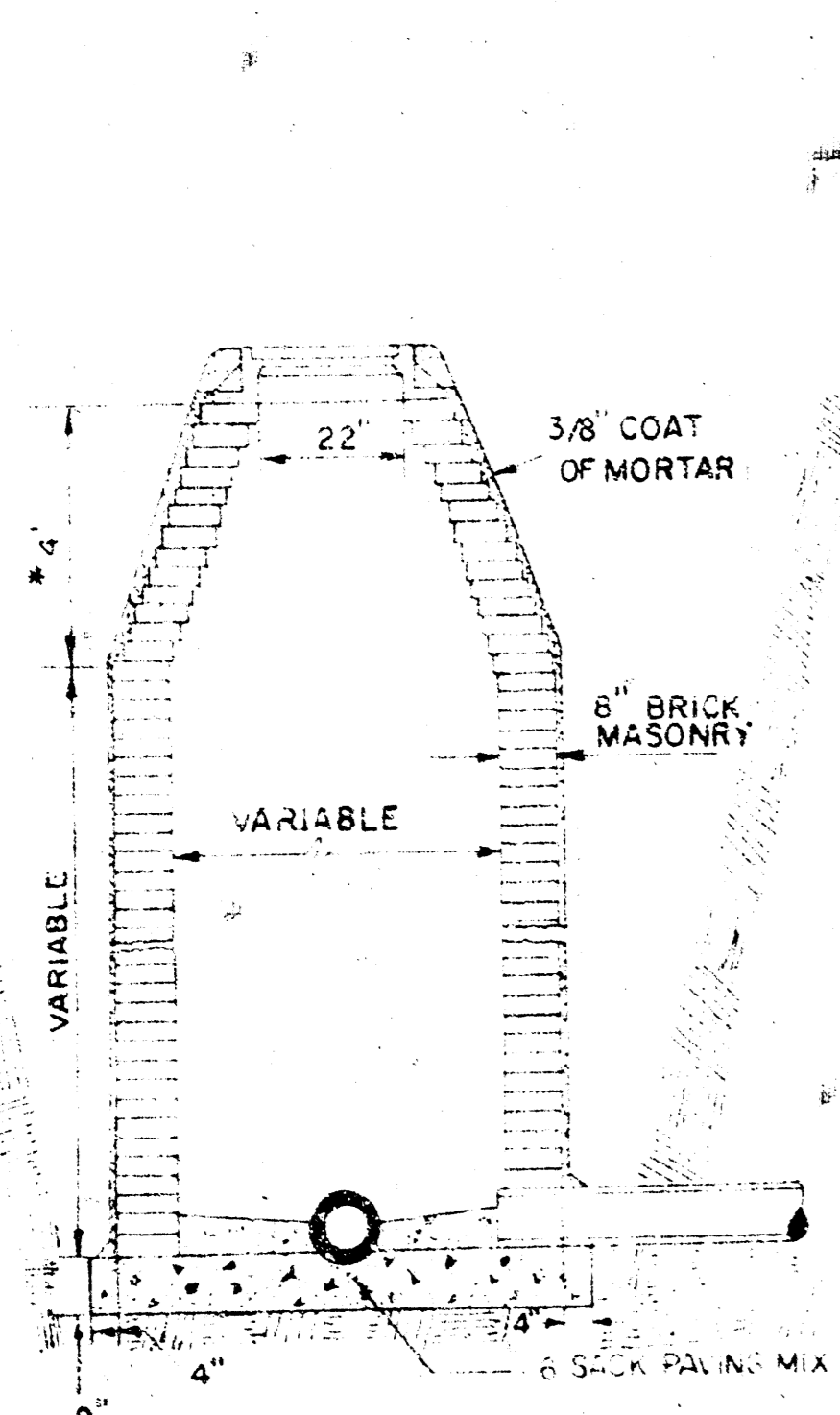
B.M. 94.12 "□" Cut in Northeast corner of top of concrete box culvert on North side of 47th Street South approximately 50 ft. West of intersection of Santa Fe Avenue and 47th Street South.

Plan Scale: 1" = 40'
 Profile Scale: 1" = 40' Horiz.
 1" = 5' Vert.

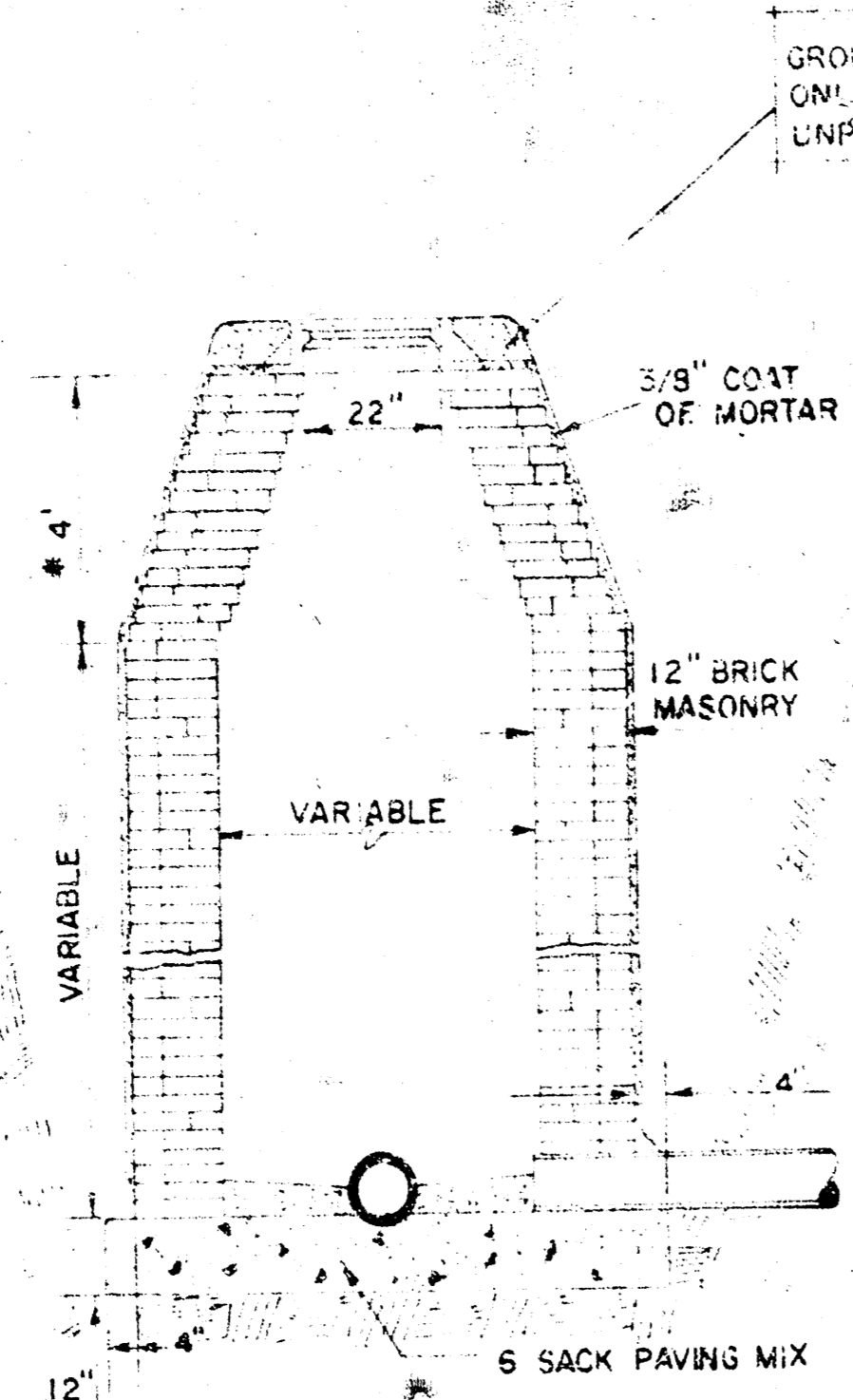


DETAIL OF ENCASEMENT

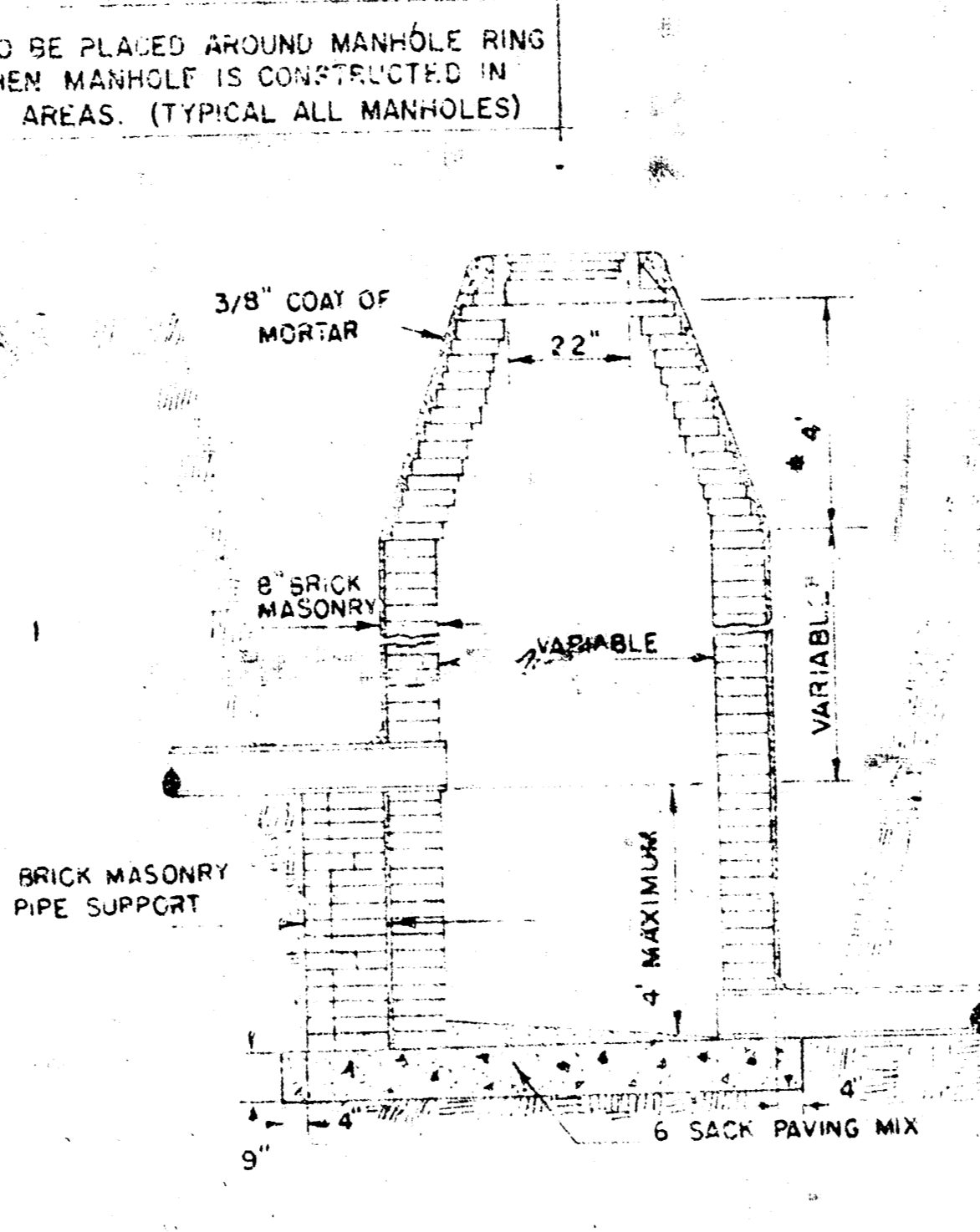




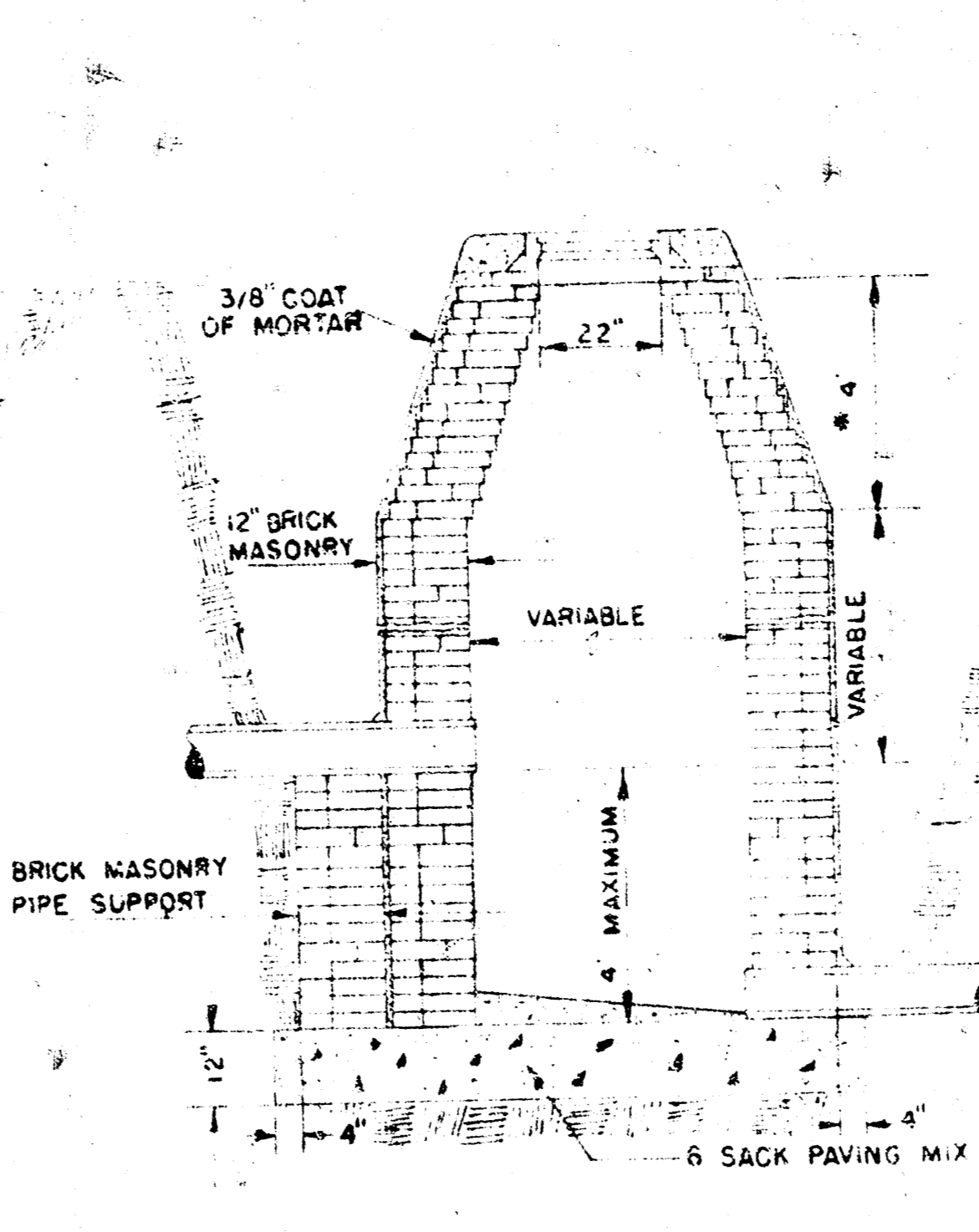
STANDARD MANHOLE TYPE "A"



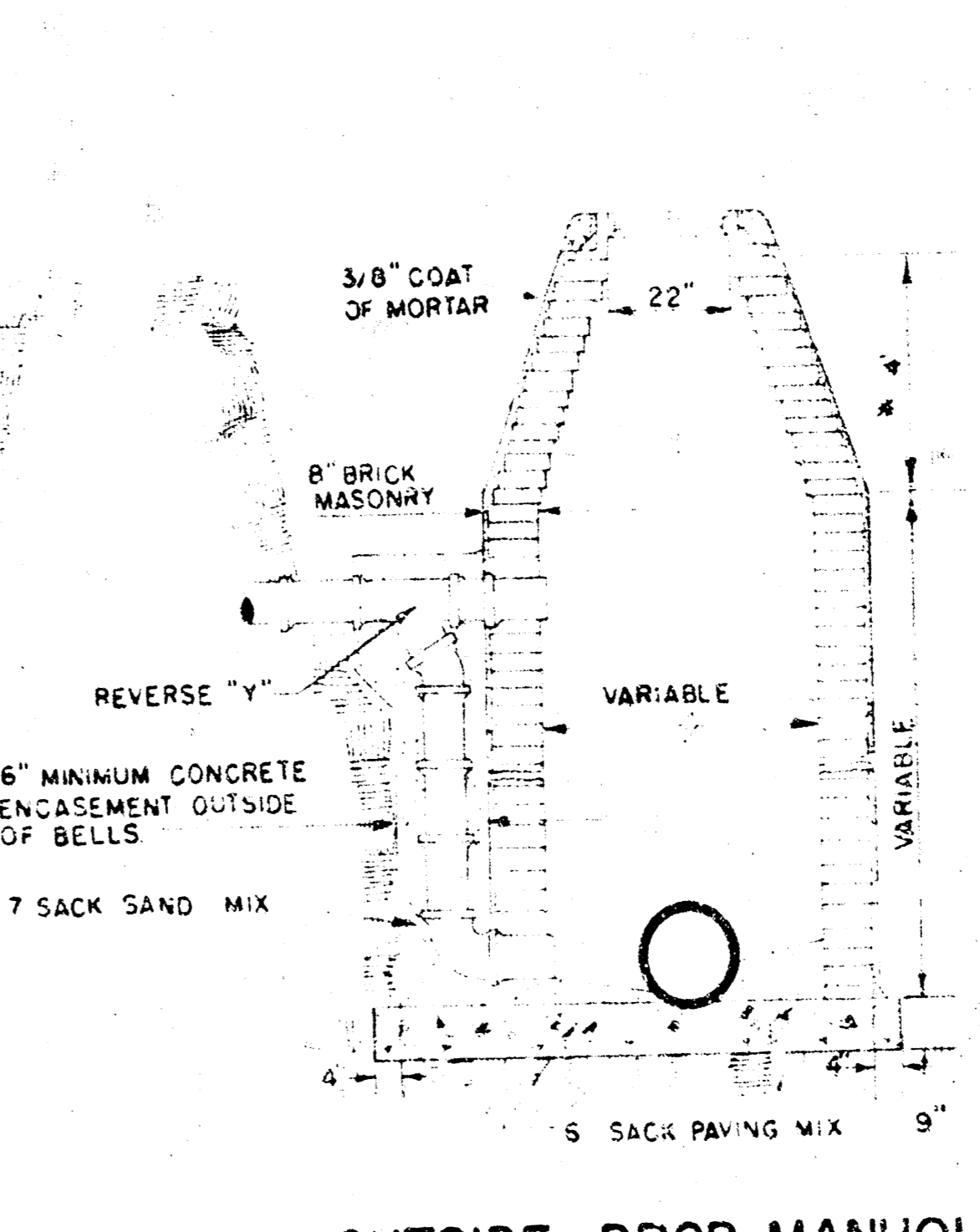
STANDARD MANHOLE TYPE "B"



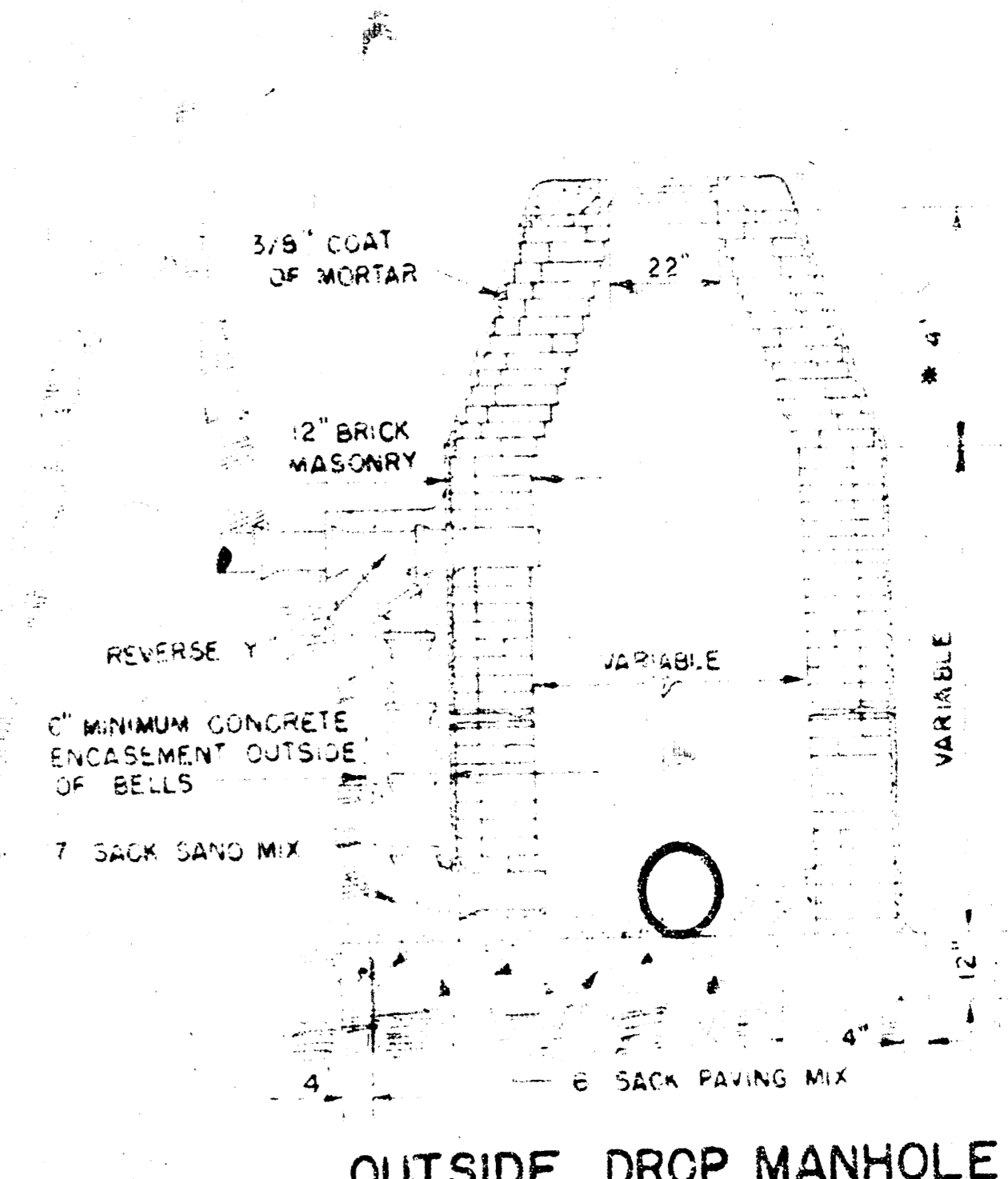
DROP MANHOLE TYPE "A"



DROP MANHOLE TYPE "B"



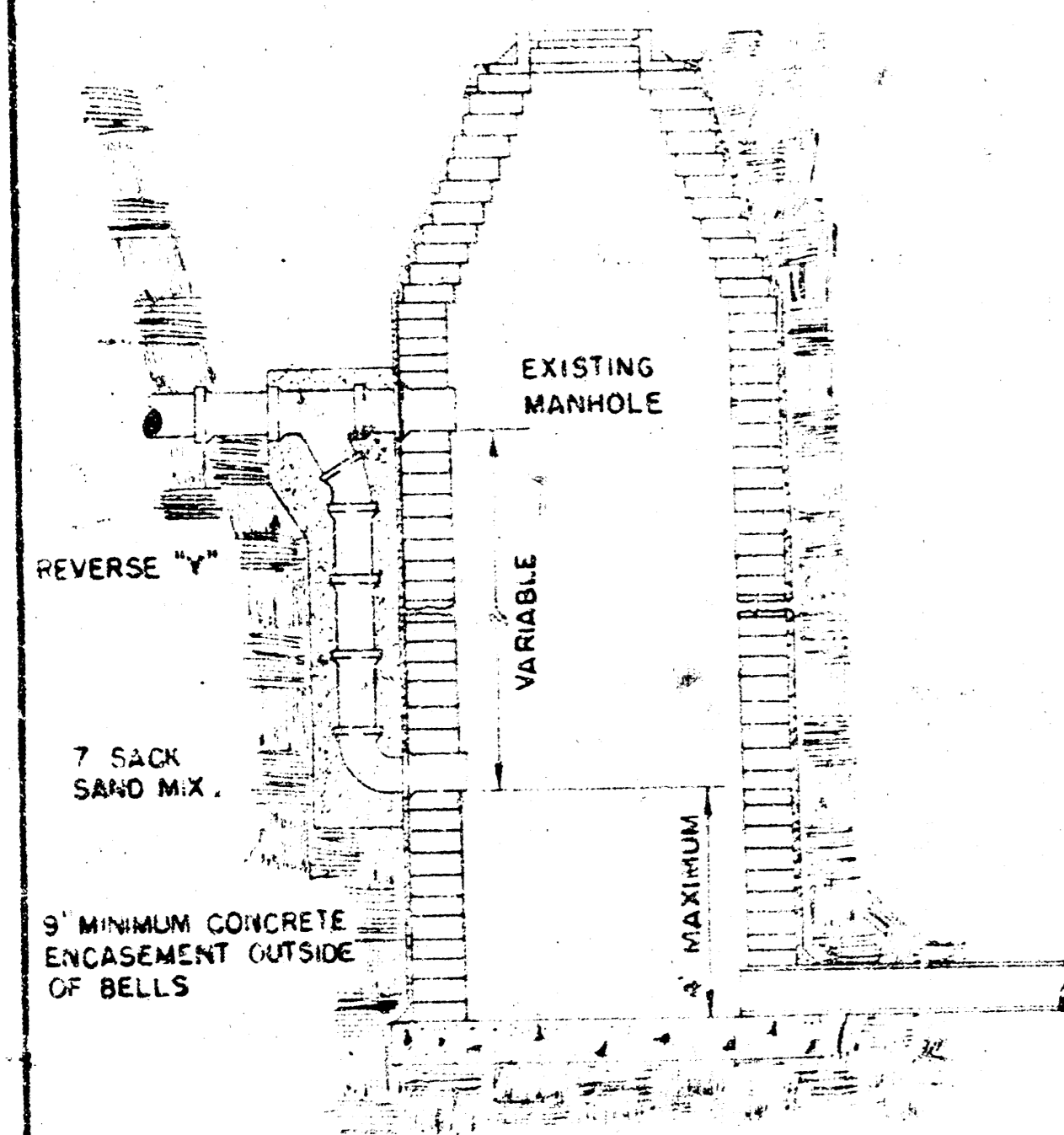
OUTSIDE DROP MANHOLE TYPE "A"



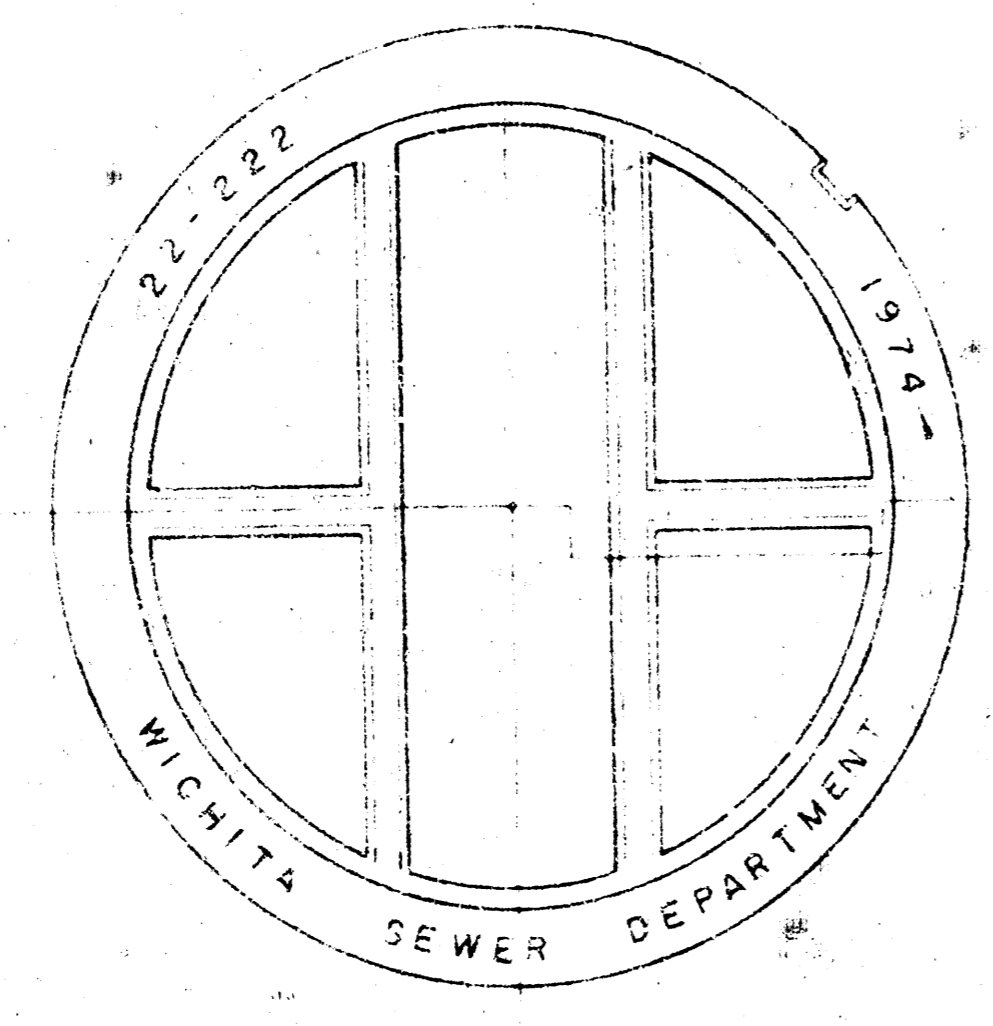
OUTSIDE DROP MANHOLE TYPE "B"

* DRAW = 6" ON 5" DIA. M.H.

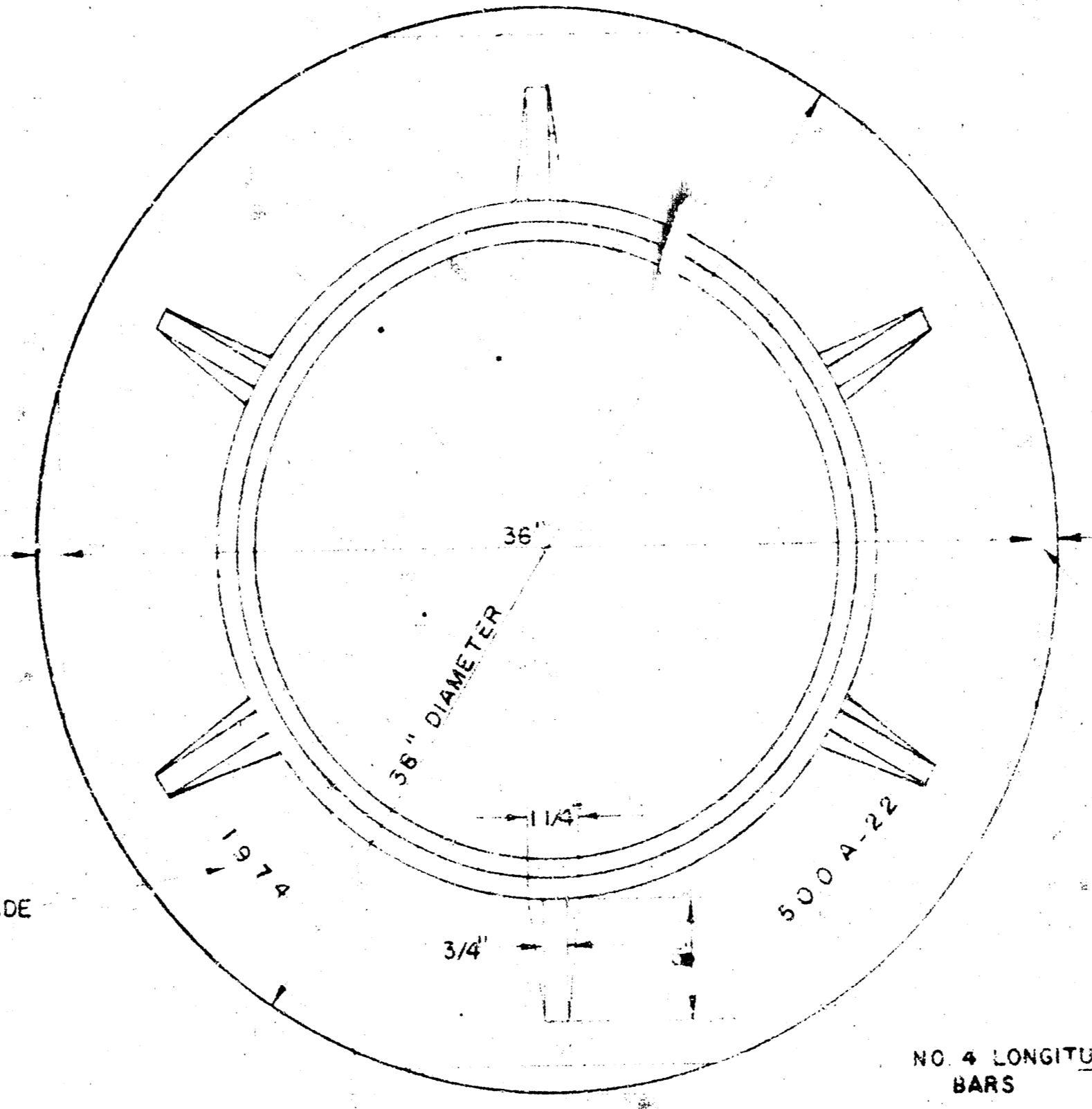
NOTE: REINFORCING STEEL SHALL BE INSTALLED IN THE MANHOLE BASES 6" ABOVE THE BOTTOM. REINFORCING STEEL SHALL CONSIST OF NO. 4 BARS PLACED ON 6" CENTERS IN BOTH DIRECTIONS. THE COST OF REINFORCING STEEL IS TO BE INCLUDED IN THE PRICE BID FOR THE MANHOLE.



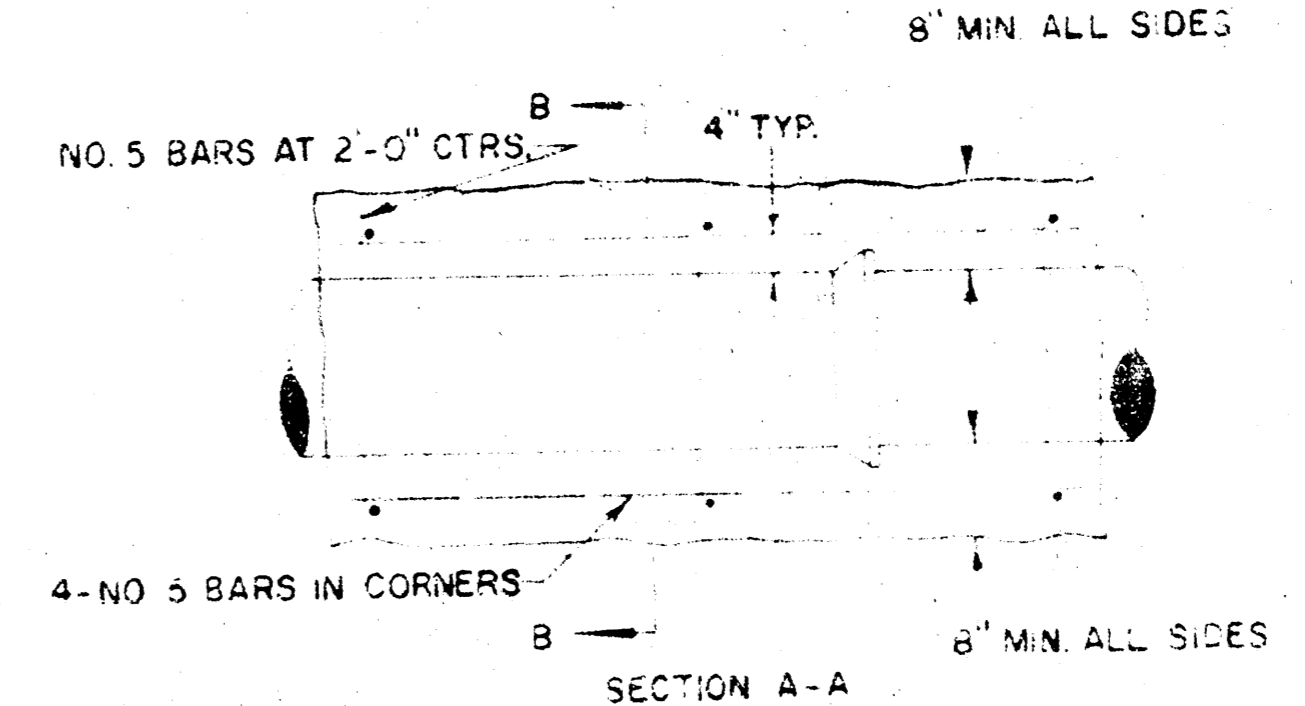
DETAIL OF DROP STACK FOR EXISTING MANHOLES IN GROUND WATER



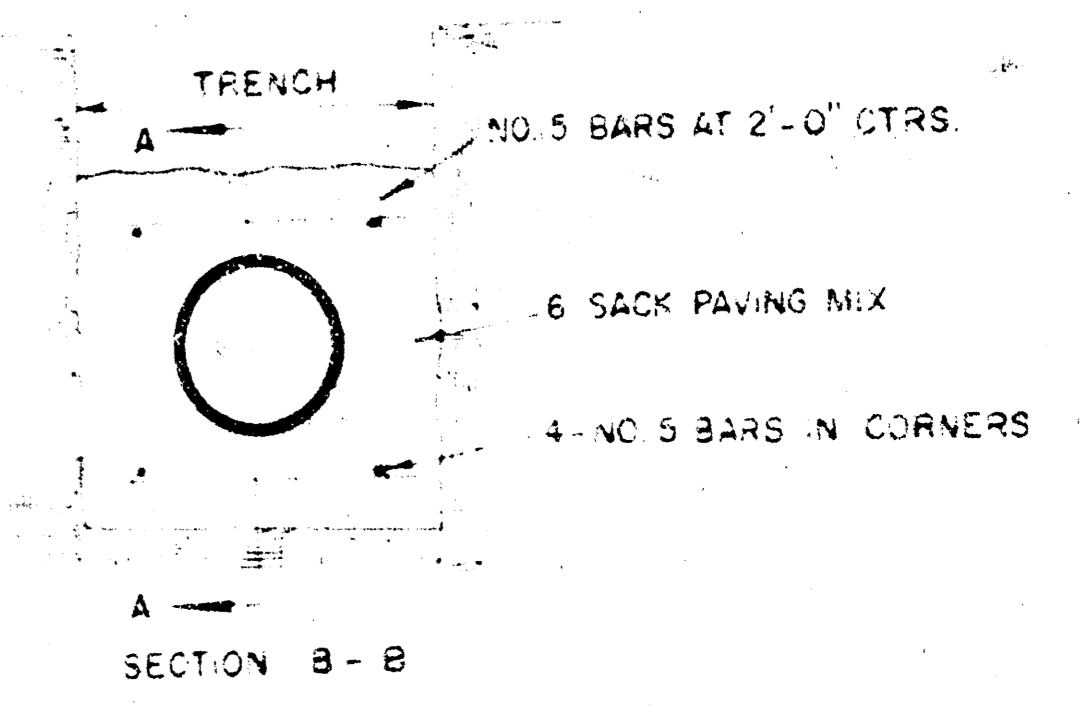
TOP VIEW MANHOLE COVER WEIGHT 40 LBS.



TOP VIEW MANHOLE RING WEIGHT 325 LBS. RING NO. 500A WEIGHT 800 LBS. RING NO. 500AS



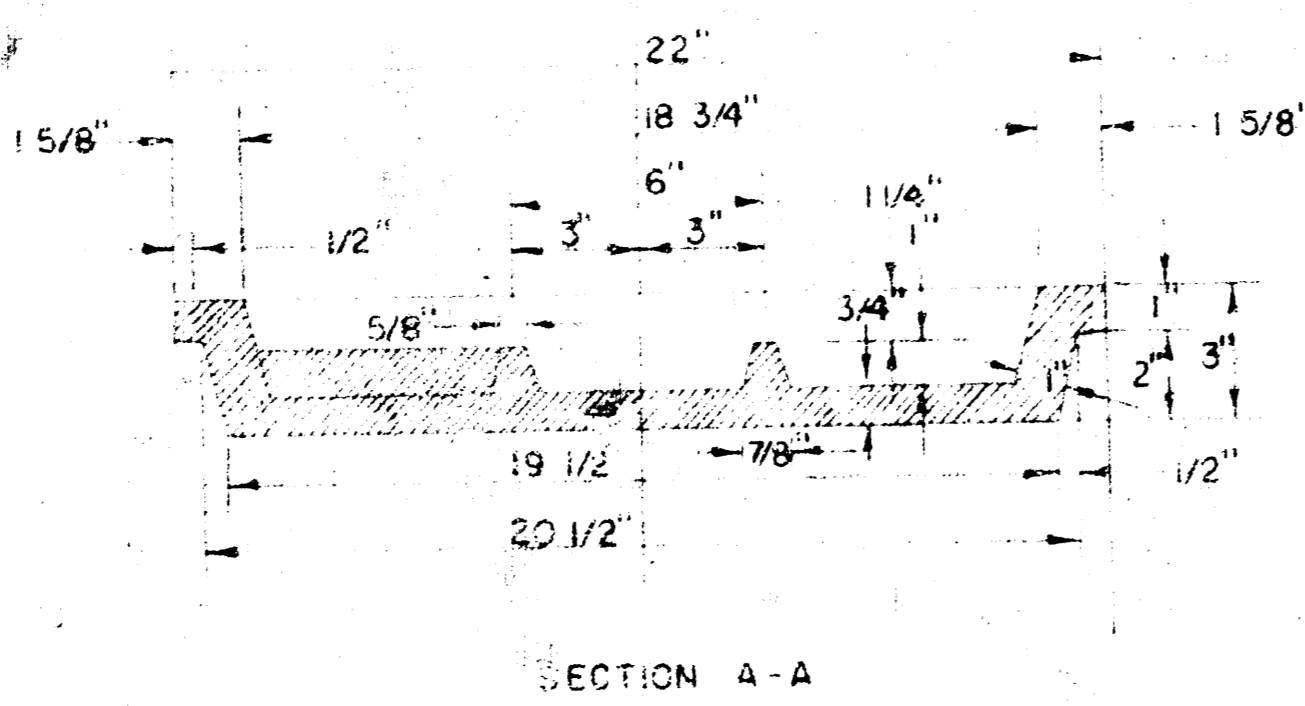
SECTION A-A REINFORCED CONCRETE ENCASEMENT



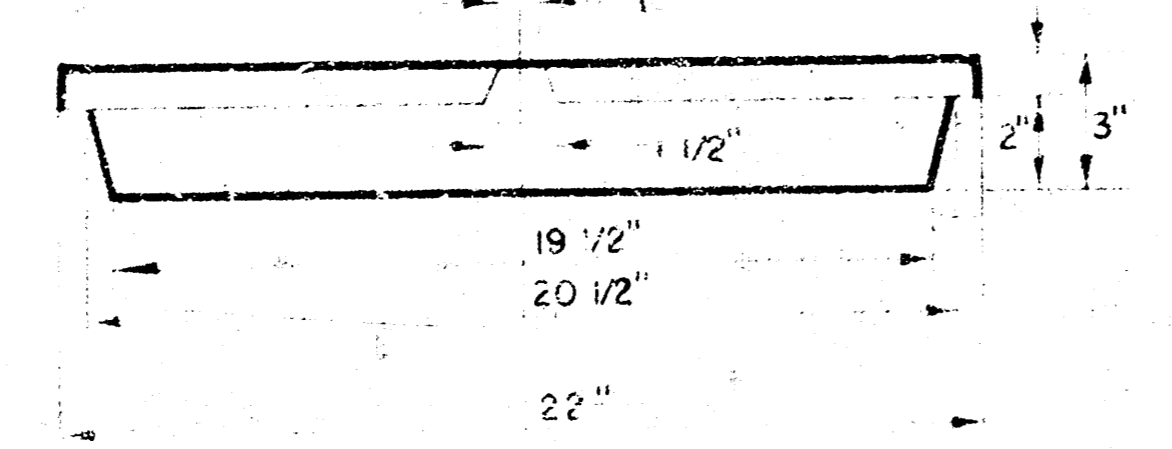
SECTION B-B REINFORCED CONCRETE ENCASEMENT

GENERAL NOTES

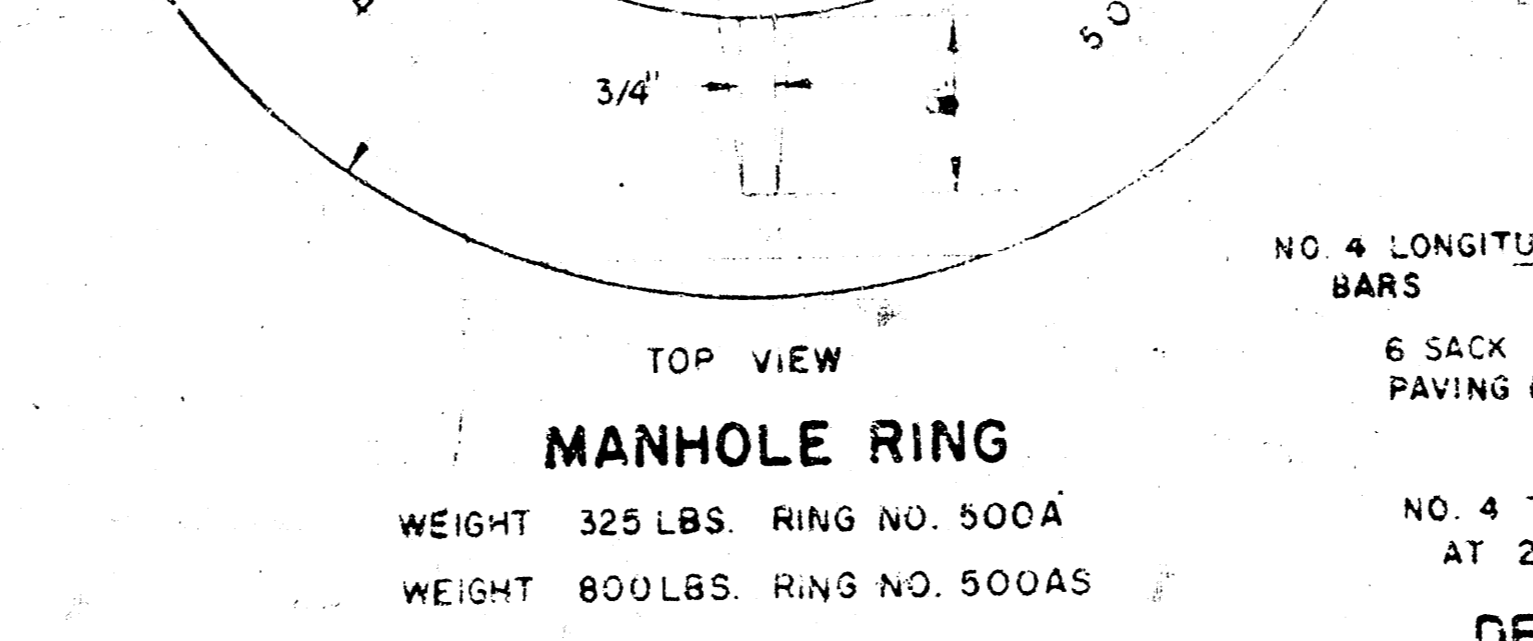
- MORTAR USED IN MASONRY CONSTRUCTION SHALL CONTAIN 8 SACKS OF CEMENT PER CUBIC YARD.
- STANDARD MANHOLES TYPE "A" OR TYPE "B" AND STANDARD DROP MANHOLES TYPE "A" OR TYPE "B" SHALL BE BID AS STANDARD MANHOLES FOR THE TYPE AND DIAMETER INDICATED.
- OUTSIDE DROP MANHOLES SHALL BE BID AS STANDARD OUTSIDE DROP MANHOLES FOR THE TYPE AND DIAMETER INDICATED. ALL MANHOLE DIAMETERS WILL BE 4' UNLESS INDICATED OTHERWISE.
- MANHOLES WITH PIPE SIZES LARGER THAN 24" SHALL BE 5' DIAMETER.
- THE FLOORS OF ALL MANHOLES SHALL BE SHAPED TO INCREASE HYDRAULIC EFFICIENCY USING 8 SACK SAND MIX CONCRETE.
- PIPES INSTALLED WITHIN THE MANHOLE EXCAVATION SHALL BE CRADLED WITH CONCRETE TO THE LIMITS OF THE MANHOLE EXCAVATION. COST OF CRADLE WITHIN MANHOLE EXCAVATION SHALL BE INCLUDED IN THE PRICE BID FOR THE MANHOLE.



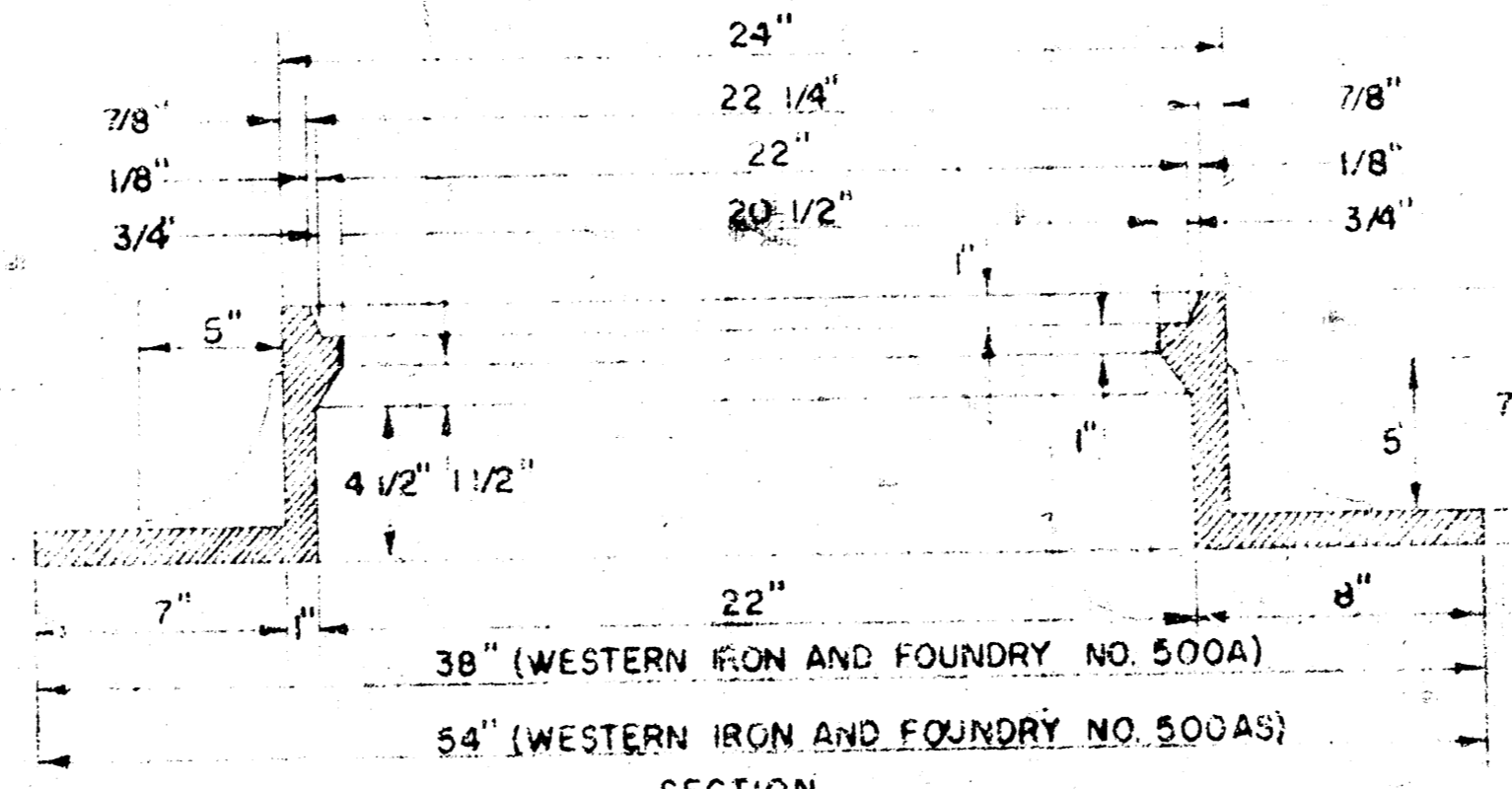
SECTION 4-A MANHOLE COVER



SIDE VIEW MANHOLE COVER



DETAIL OF CONCRETE CRADLE



SECTION MANHOLE RING

OUTSIDE CIRCUMFERENCE OF COVER AND THE INNER FACE AND SEAT OF RING TO BE MACHINE FIT.

ORDINARY BEDDING METHOD STORM SEWER PIPE

REVISED 4-13-77
 DETAILS OF SEWER APPURTENANCES ADOPTED AS STANDARD DESIGN BY ENGINEERING DIVISION CITY OF WICHITA, KANSAS R. W. LINN CITY ENGINEER 1974