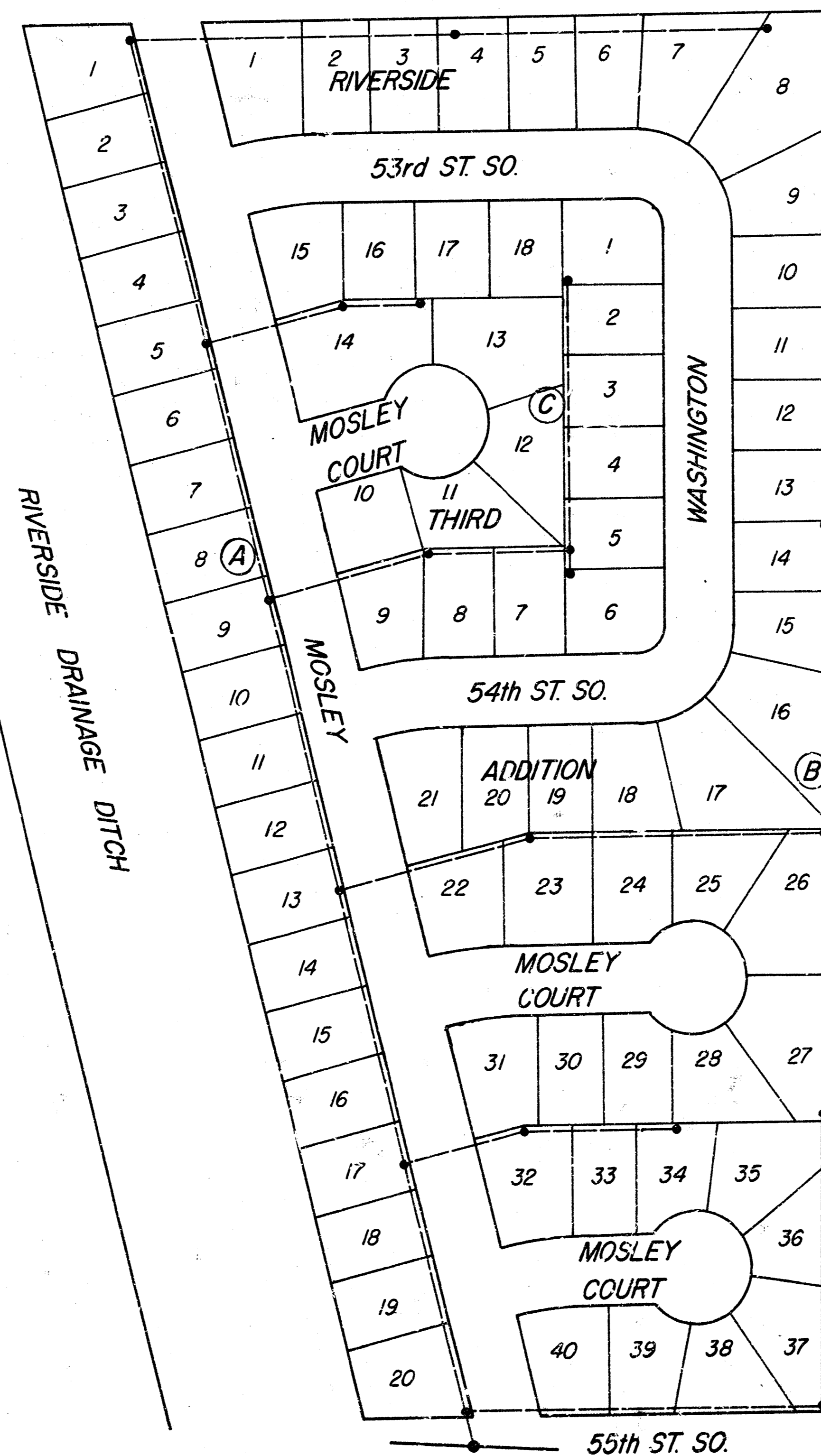


Lateral 18, Main 2, Southwest Interceptor
468-76-245-80770-000-000-001

CITY of WICHITA, KANSAS
 DEPT. of PUBLIC WORKS-ENG. DIV.
 DEAN S. SELLERS-ACTING CITY ENGINEER



GENERAL NOTES

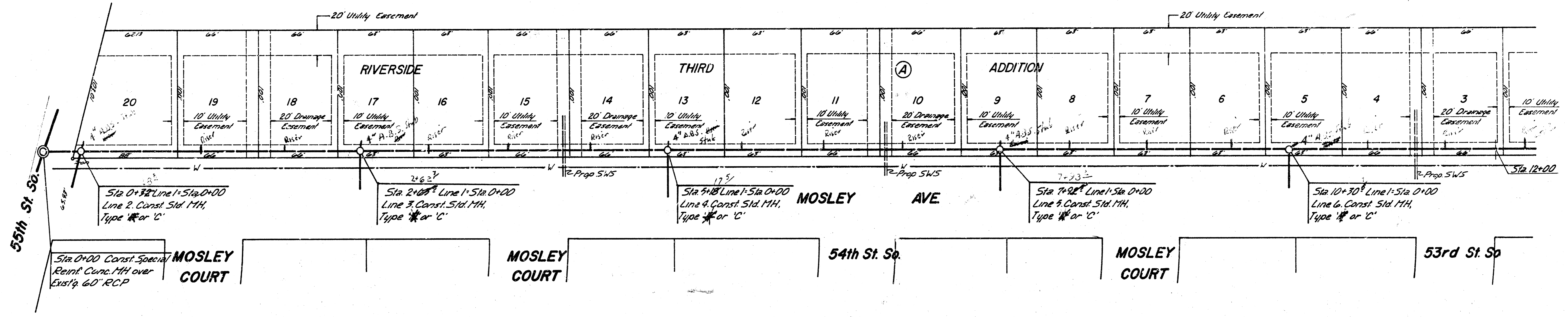
1. CONTRACTOR TO CONTACT UTILITY COMPANIES FOR LOCATION OF UNDERGROUND LINES.
2. FIELD ENGINEER SHALL SET TOP OF MANHOLES TO MATCH PROPOSED FINISH GRADE AS DETERMINED BY DEVELOPER UNLESS OTHERWISE NOTED ON PLANS.
3. OUTSIDE OF MANHOLE AT STATION 0 + 00 LINE NO. 1 SHALL BE WATERPROOFED WITH TWO HEAVY COATS OF COPPERS BITUMASTIC SUPER SERVICE BLACK, TNEPEC #50 HEAVY TNEPECOL, U.S.S. TARNASTIC 103, OR APPROVED EQUAL.
4. CONTRACTOR SHALL REMOVE TOP HALF OF 60" PLASTIC LINED RCP IN NEW MANHOLE AT STATION 0 + 00, LINE 1. LINES OF REMOVAL SHALL BE SAWS TO NEAT LINES. ALL REMAINING EXPOSED EDGES OF CONCRETE PIPE SHALL BE COVERED WITH PLASTIC LINING AND SEALED.
5. FIELD ENGINEER TO MAKE TIES TO ANY IRONS THAT MAY BE DISTURBED DURING CONSTRUCTION AND REPLACE ANY THAT ARE DESTROYED.

NOTE: FIELD ENGINEER SHALL SET TOPS OF MANHOLES TO MATCH PROPOSED FINISHED GRADE AS DETERMINED BY THE DEVELOPER. RISERS AND ADDITIONAL STUBS SHALL BE INSTALLED ON THIS PROJECT TO SERVE INDIVIDUAL LOTS WHEN ORDERED BY THE FIELD ENGINEER. RISER CONSTRUCTION SHALL CONFORM TO THE REQUIREMENTS AS SHOWN ON STANDARD RISER DETAIL SHEET. LOCATIONS OF THE ENDS OF THE RISERS SHALL BE MARKED BY FASTENING GREEN PLASTIC COLORED TAPE TO THE END OF THE RISER AND BROUGHT TO THE GROUND SURFACE AS THE EXCAVATION IS BACKFILLED SUCH THAT THE COLORED TAPE WILL BE VISIBLE WHEN THE PROJECT IS COMPLETED. ALL RISERS SHALL BE CONSTRUCTED USING S.D.P., 23.5 A.B.S., OR P.V.C. PIPE. ELEVATIONS OF STUBS AND TOPS OF RISERS SHALL BE SUCH THAT WILL FACILITATE CONNECTION OF BASEMENT DRAINS WHEN THESE LOTS ARE DEVELOPED.

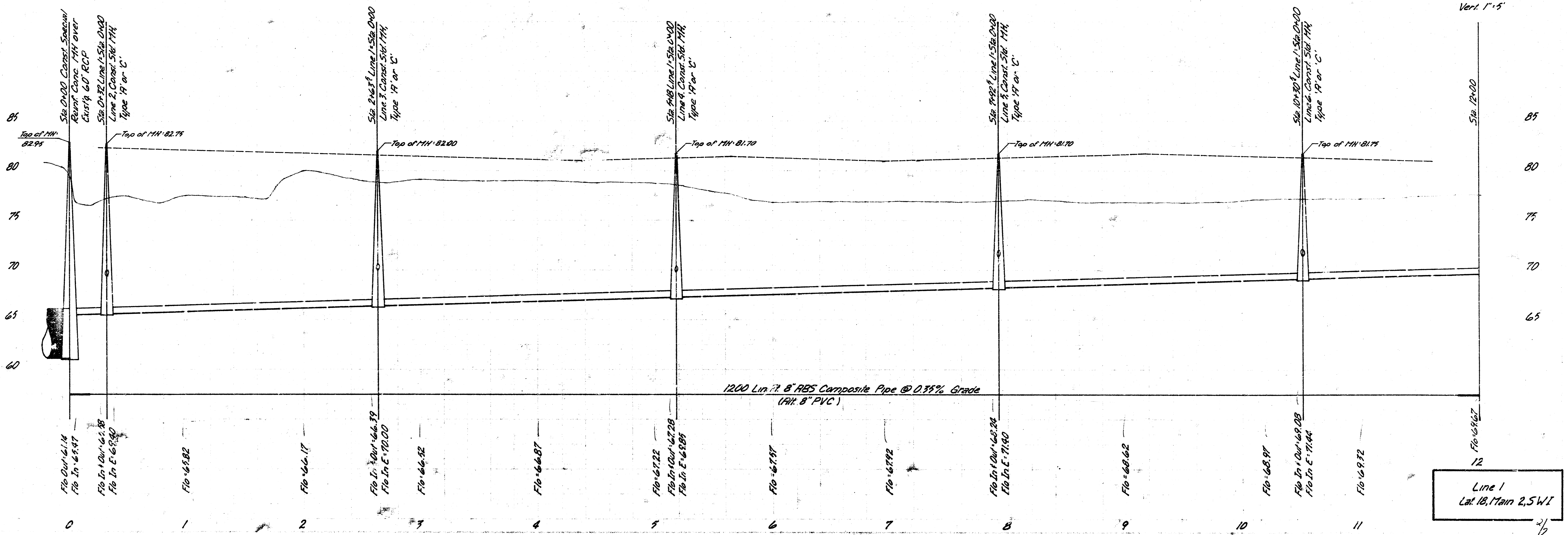
As Built
 11-6-80 B.R.
 E294

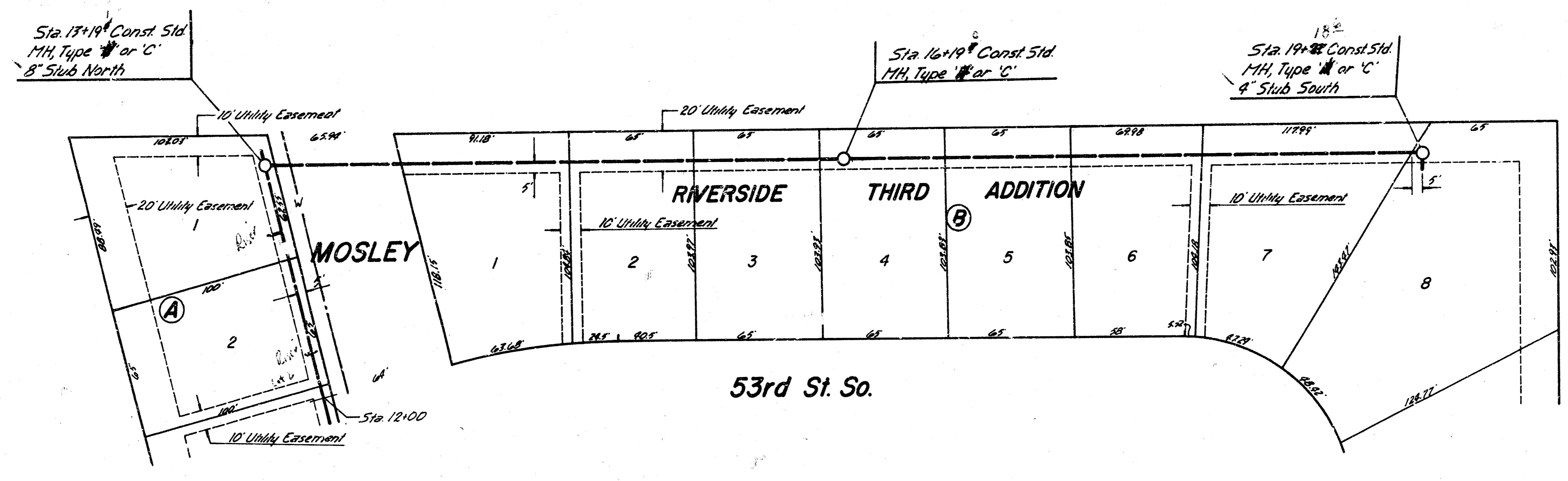


DRAINAGE DEDICATION

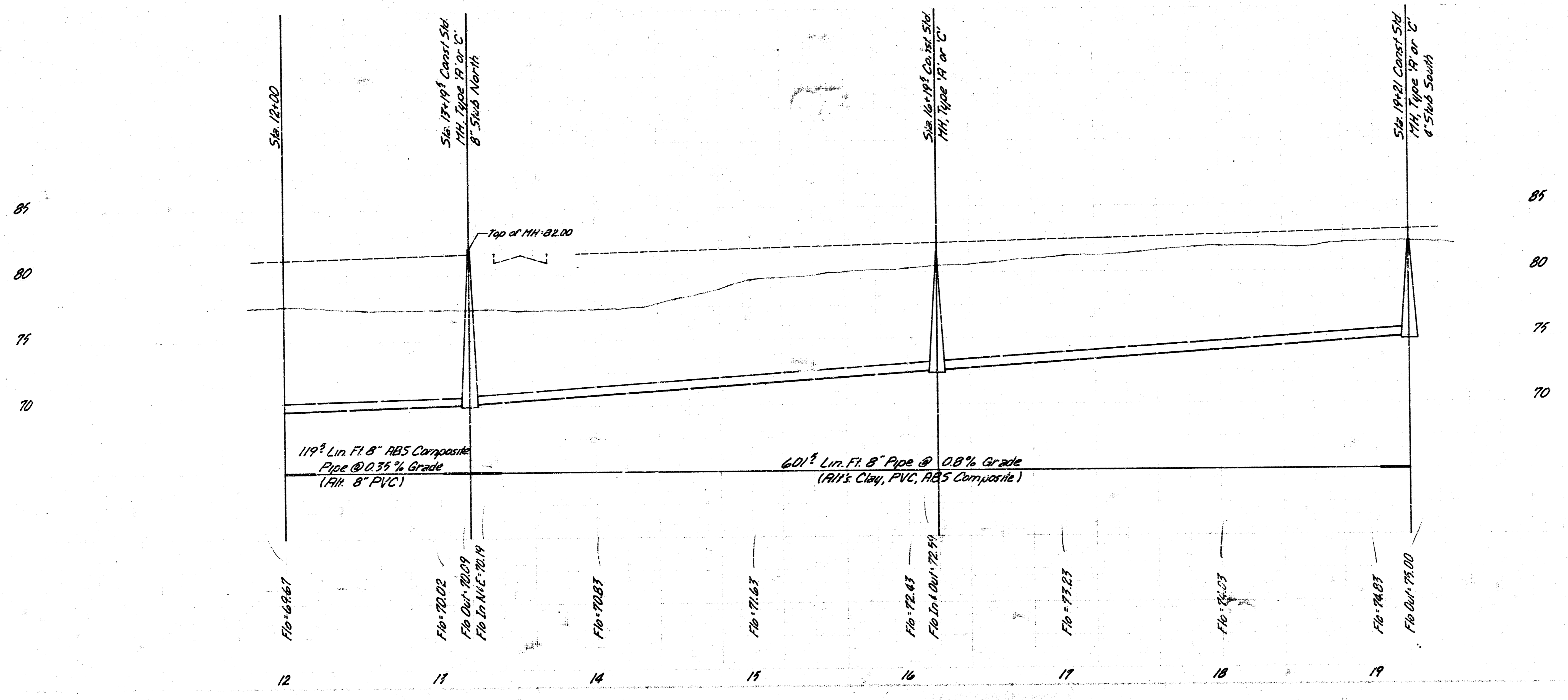


Scale
Plan 1"=40'
Profile Horiz 1"=40'
Vert 1"=5'

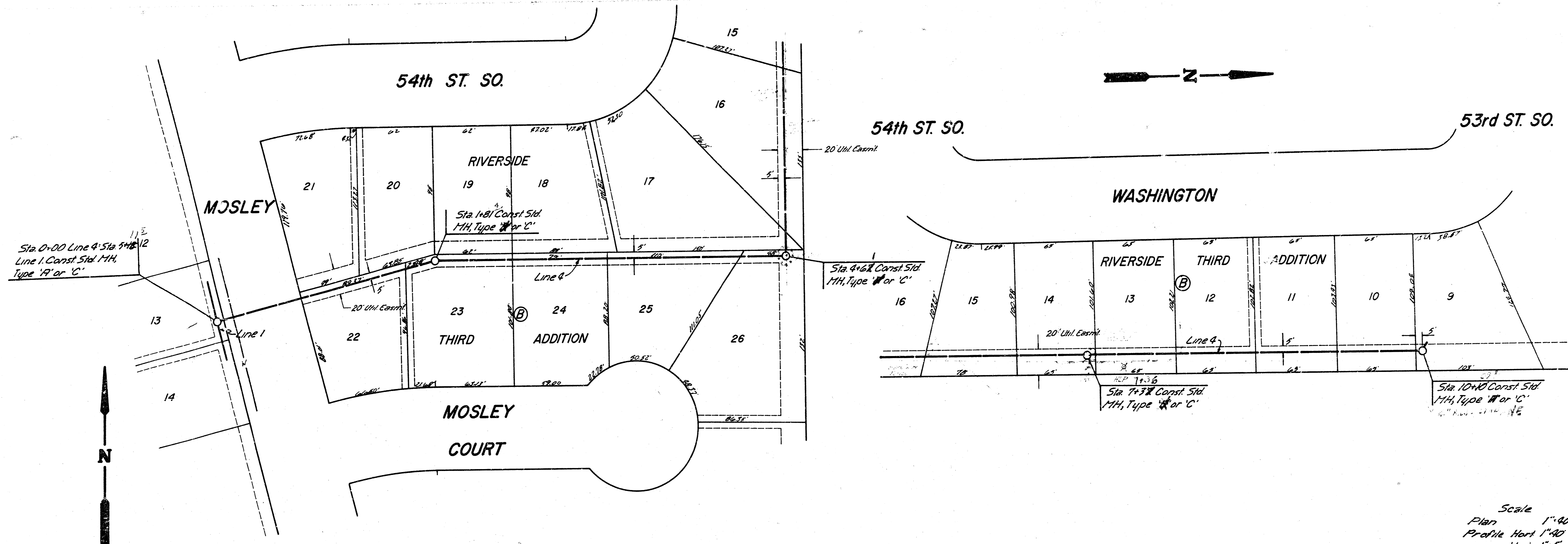




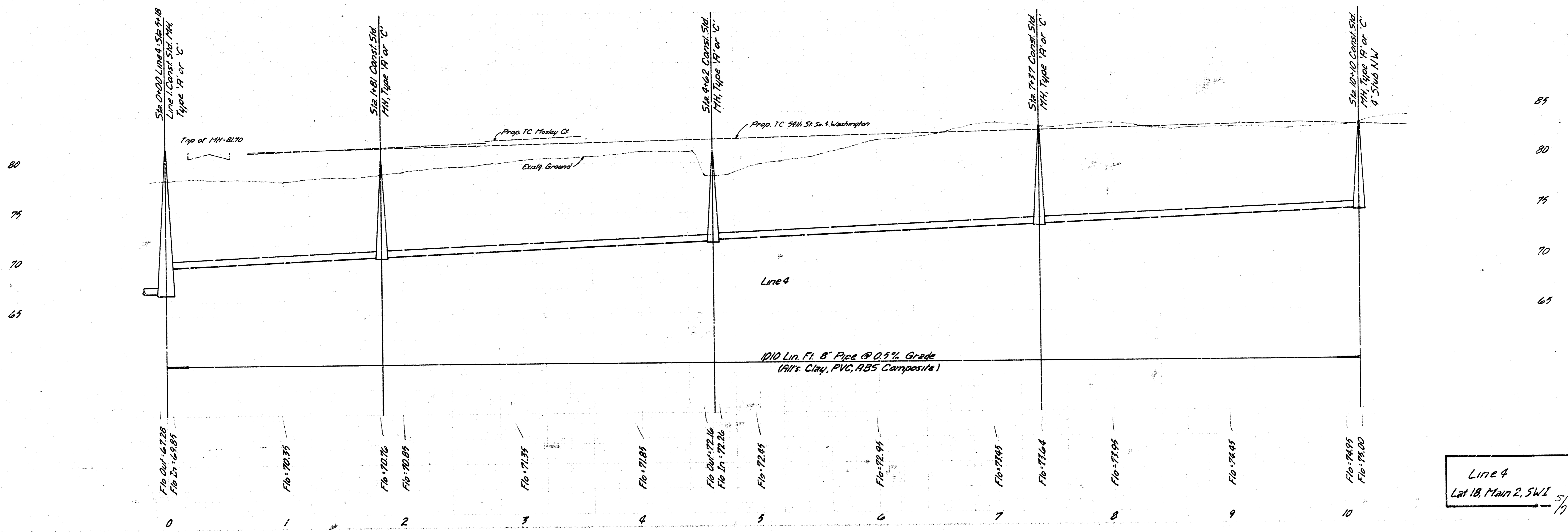
Scale
 Plan 1"=40'
 Profile Horiz 1"=40'
 Vert 1"=5'



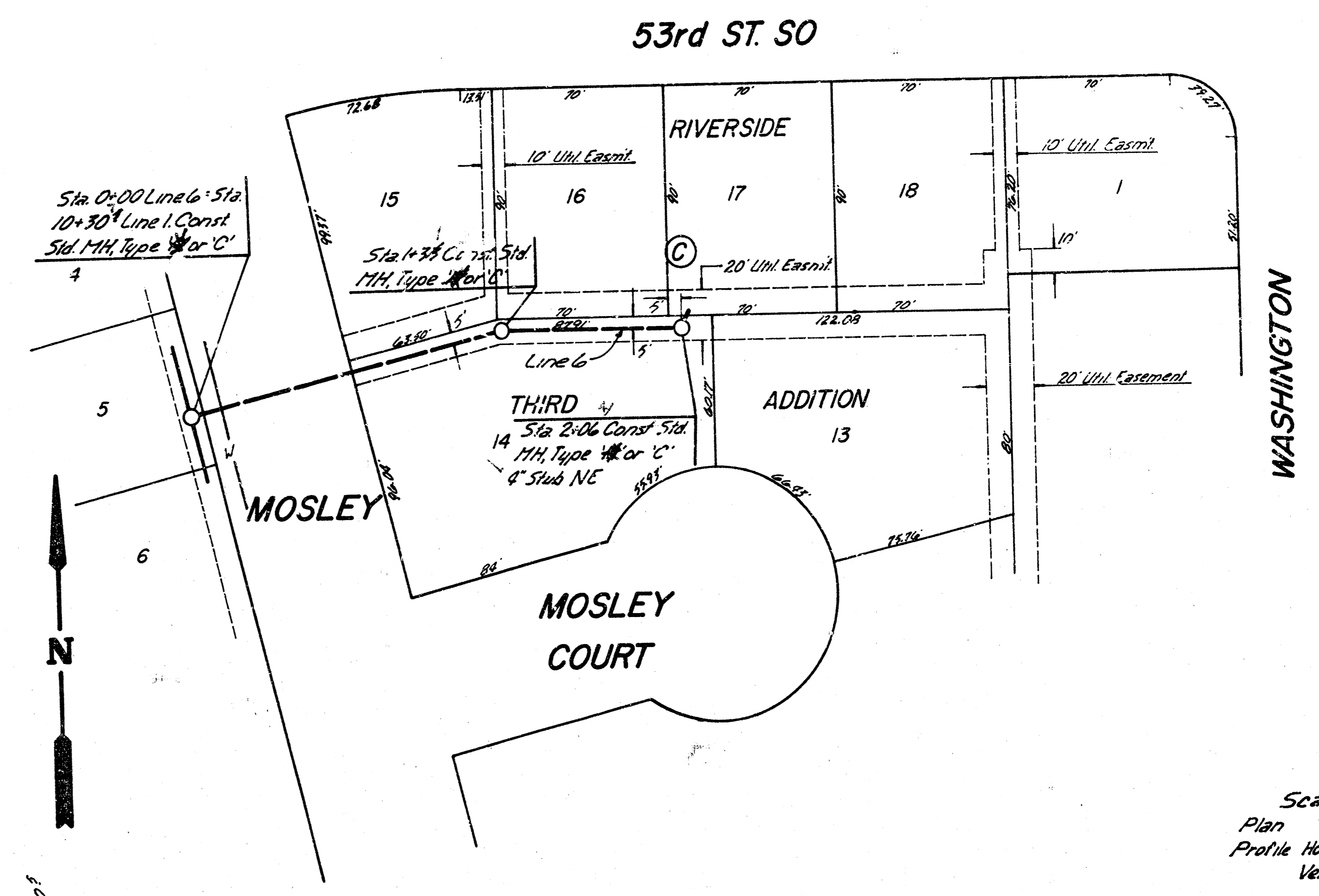
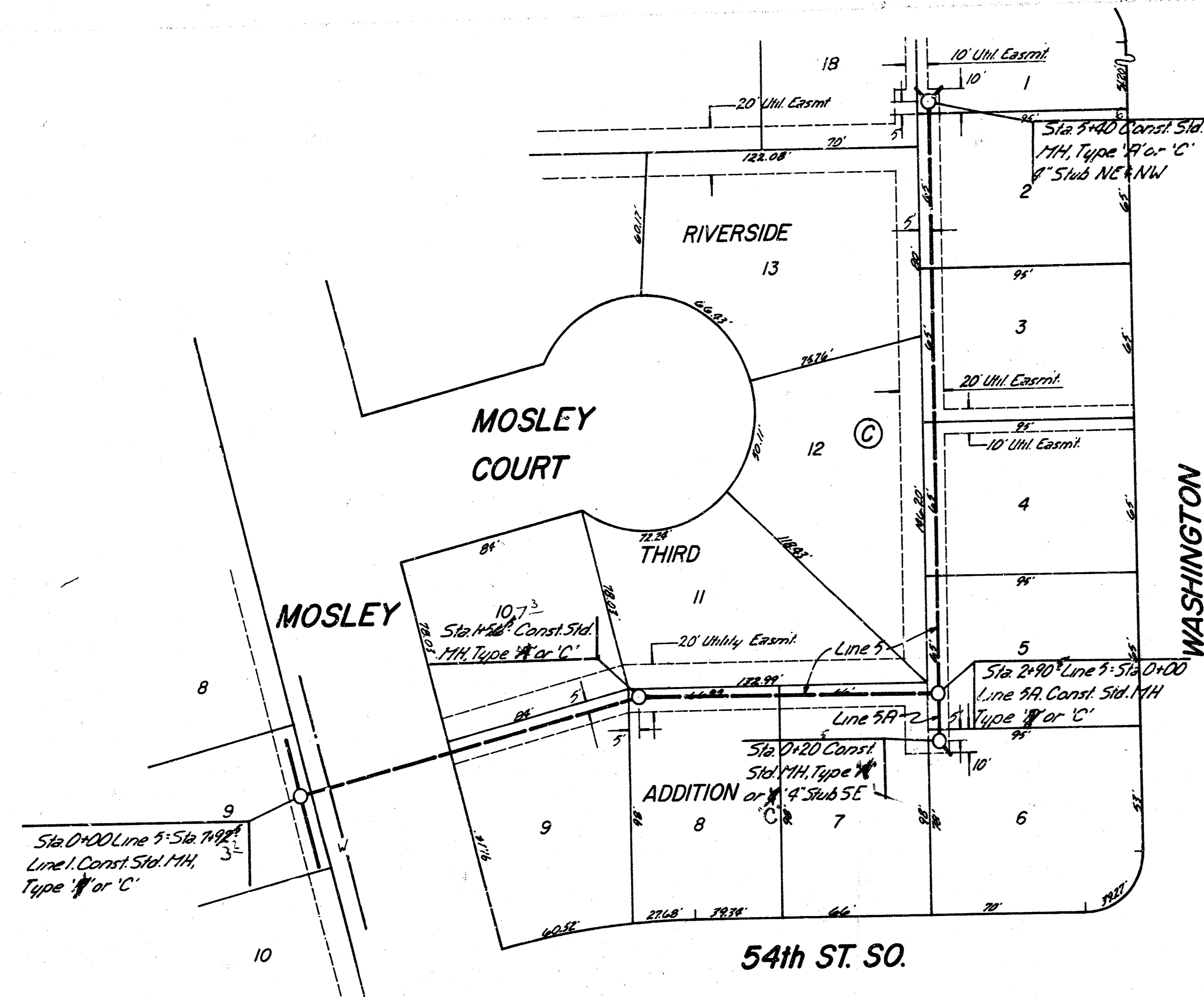
Line 1
 Lot 18, Main 2, SWI
 3/12



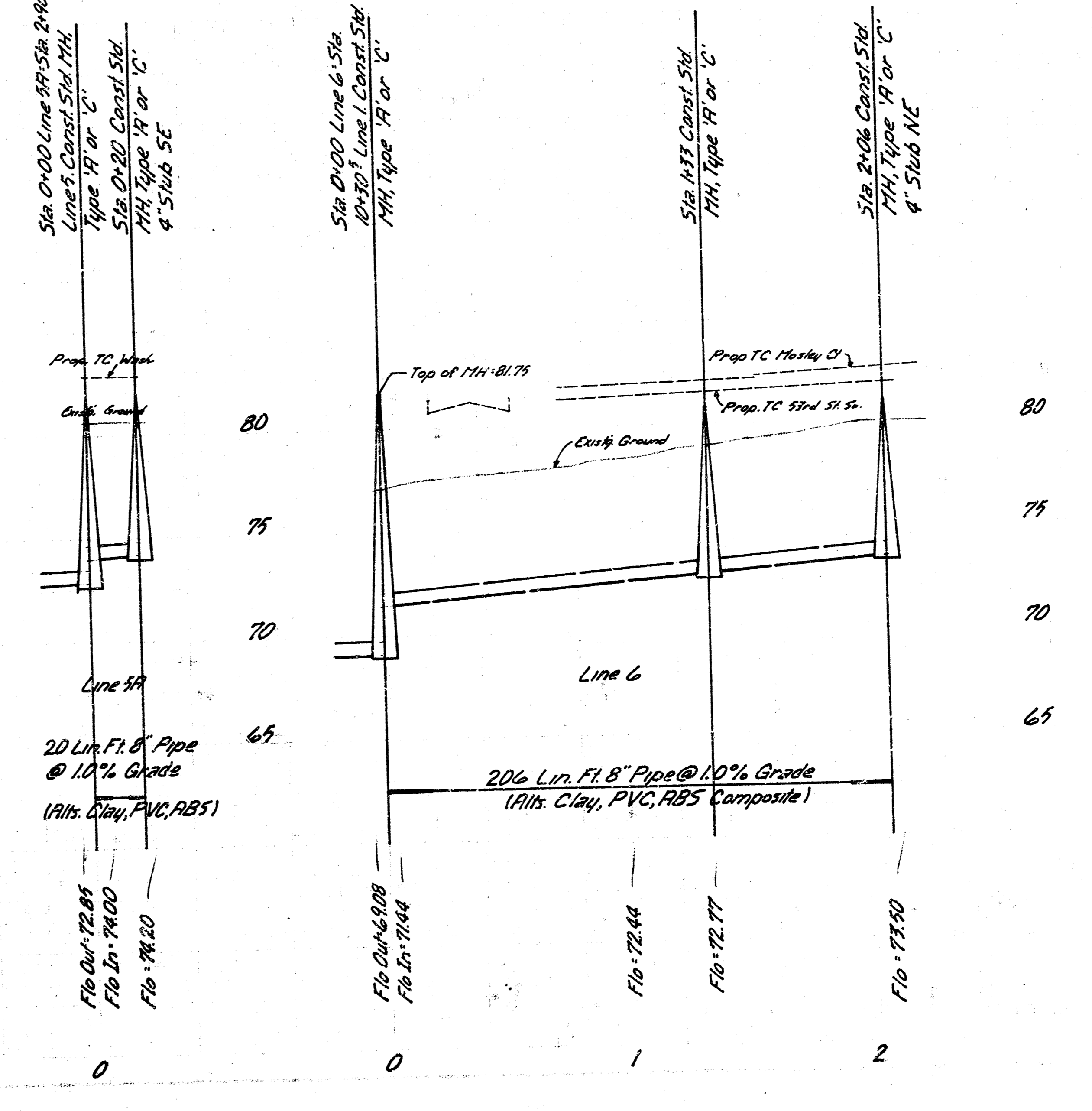
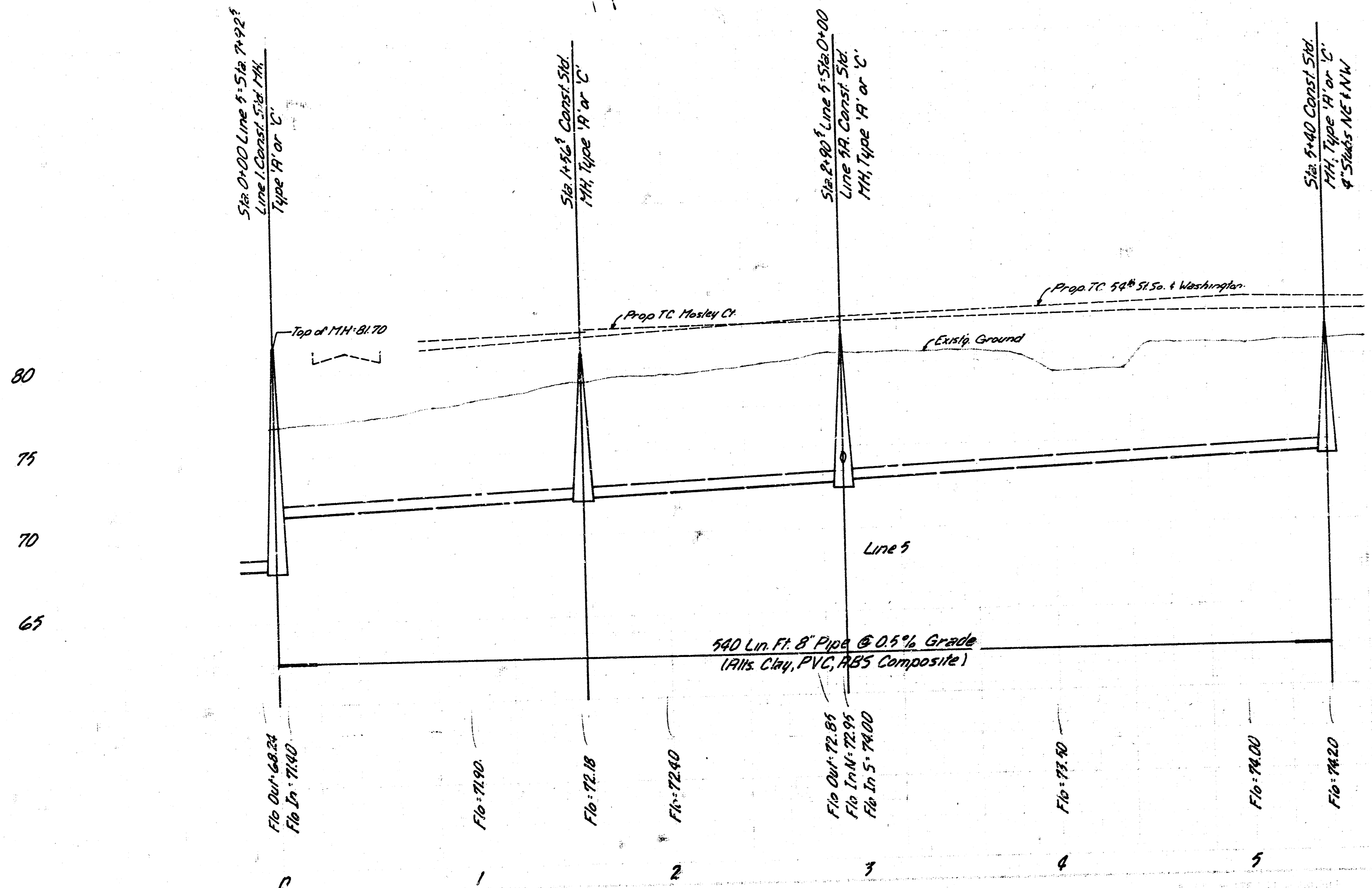
Scale
 Plan 1"=40'
 Profile Vert 1"=40'
 Vert 1"=5'



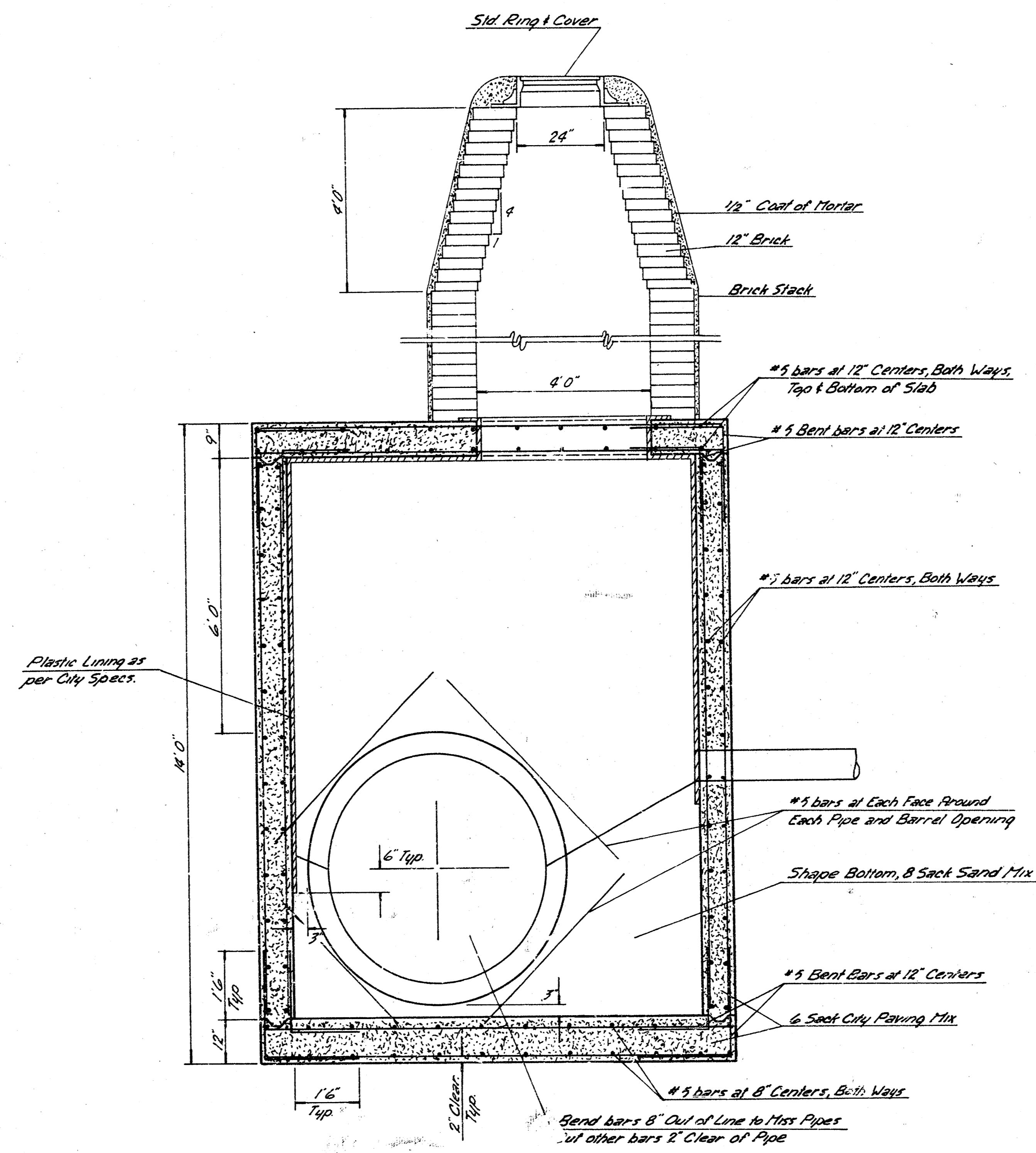
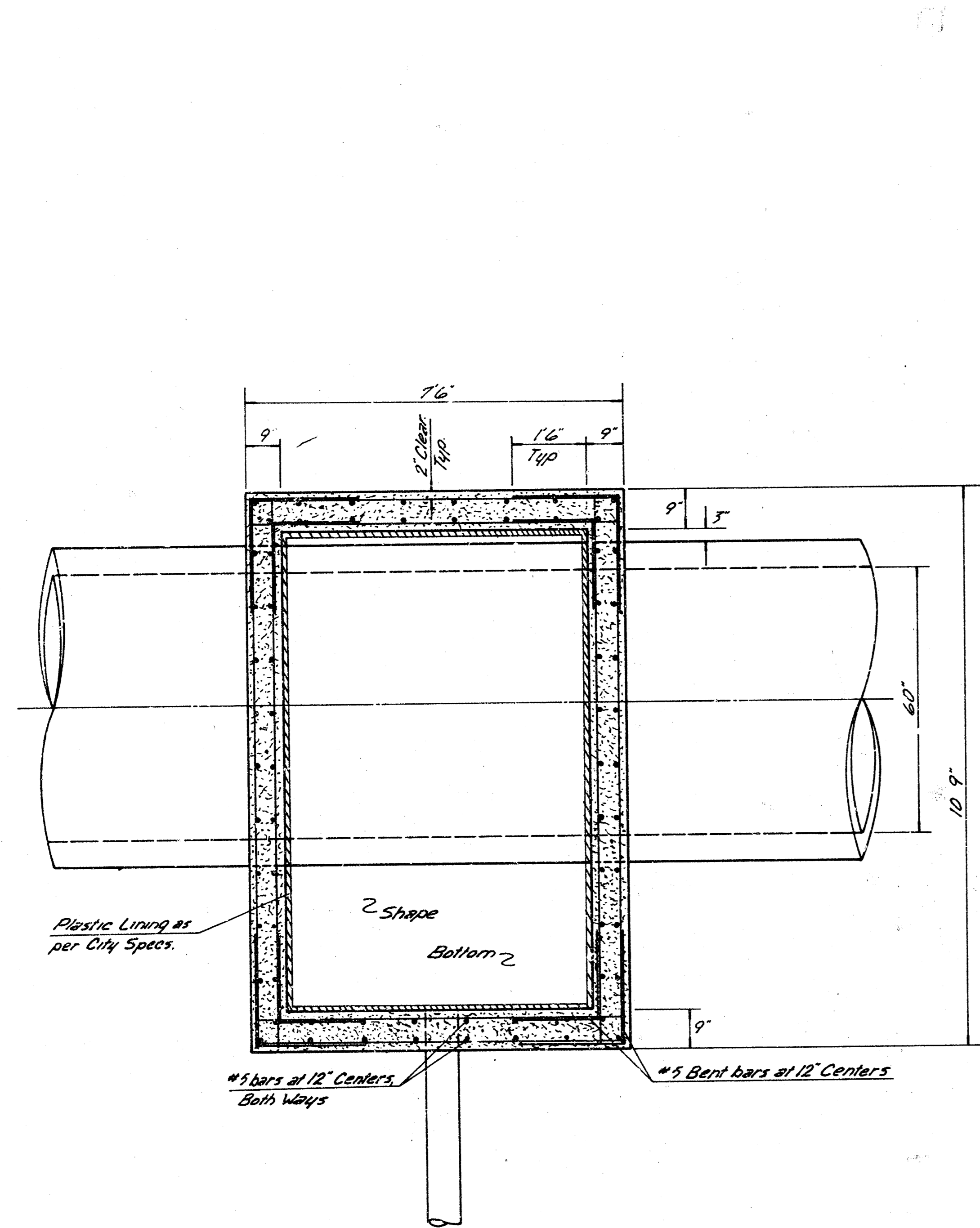
Line 4
 Lat 18, Main 2, SW 1/4



Scale
Plan 1"=40'
Profile Vert. 1"=40'
Vert. 1"=5'



Line 5, 5A + 6
Lat. 18, Main 2, SWI
6/17



DETAIL
SPECIAL REINFORCED
CONCRETE MANHOLE
with OFFSET STACK