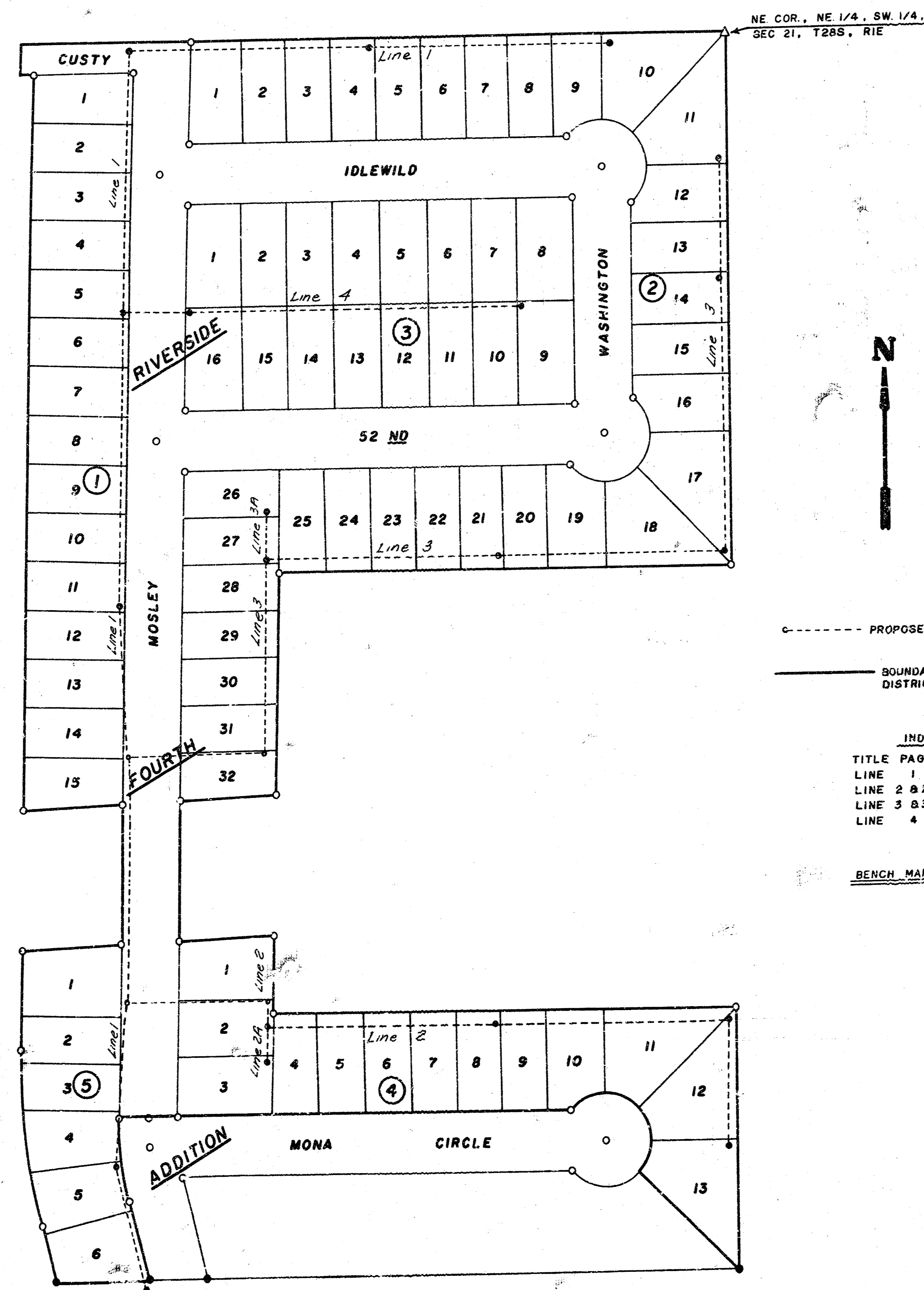


LATERAL 20, MAIN 2, SOUTHWEST INTERCEPTOR SEWER CITY OF WICHITA, KANSAS

R. W. BRUGGEMAN: DIRECTOR OF ENGINEERING/CITY ENGINEER

PROJECT NO. 468-76-245-81086-000-000-001



----- PROPOSED SAN SEWER
 ——— BOUNDARY OF IMPROVEMENT DISTRICT

INDEX TO SHEETS

TITLE PAGE	SHEET 1
LINE 1	SHEET 2 & 3
LINE 2 & 2A	SHEET 4
LINE 3 & 3A	SHEET 5 & 6
LINE 4	SHEET 6

BENCH MARKS - 84.56' NW "M" IN MUELLER ON FIRE HYDRANT AT NW COR. OF MEAD & 53RD ST. SO.
 77.54' "D" SO. END OF CONC. HEADWALL, W. END OF KTA DRAINAGE SMT. APPROX. 120' W OF WL MOSLEY.

THE CONTRACTOR SHALL BE RESPONSIBLE FOR PRESERVING PROPERTY IRONS. THE CONTRACTOR SHALL BE REQUIRED TO RE-ESTABLISH ANY PROPERTY IRONS WHICH ARE DAMAGED OR DESTROYED BY HIS CONSTRUCTION OPERATIONS. SUCH IRONS SHALL BE RE-ESTABLISHED BY A LICENSED LAND SURVEYOR OR A LICENSED PROFESSIONAL ENGINEER IN ACCORDANCE WITH STATE LAWS.

NOTE: RISER PIPE SHALL BE INSTALLED TO SERVE INDIVIDUAL LOTS OR TRACTS IN CONJUNCTION WITH NEW SANITARY SEWER CONSTRUCTION, UNLESS OTHERWISE ORDERED BY THE ENGINEER, BECAUSE OF GROUND WATER, UNSTABLE SOIL OR UNUSUALLY DEEP CONSTRUCTION. RISER LOCATIONS SHALL BE AS APPROVED BY THE PROPERTY OWNER WITH THE CONCURRENCE OF THE ENGINEER. INSTALLATION OF RISERS ON SEWERS BECAUSE OF UNUSUAL DEPTH WILL BE REQUIRED WHEN THE SEWER IS DEEPER THAN TWELVE FEET (12'). THE CONTRACTOR WILL BE REQUIRED TO FILE WRITTEN DOCUMENTATION WITH THE ENGINEER IN A FORM APPROVED BY THE ENGINEER INDICATING THE LOCATIONS WHERE RISERS ARE TO BE INSTALLED AS REQUESTED BY THE PROPERTY OWNER OR HIS AUTHORIZED REPRESENTATIVE. RISER PIPE CONSTRUCTION SHALL CONFORM TO THE REQUIREMENTS AS SHOWN ON THE STANDARD RISER DETAIL SHEET.

*As Built
6-82
J.L.L.*

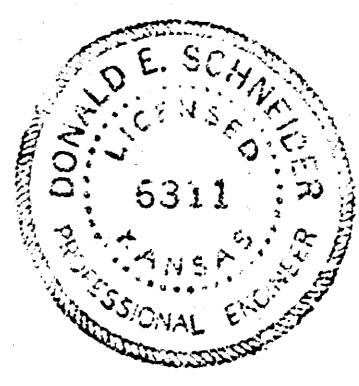
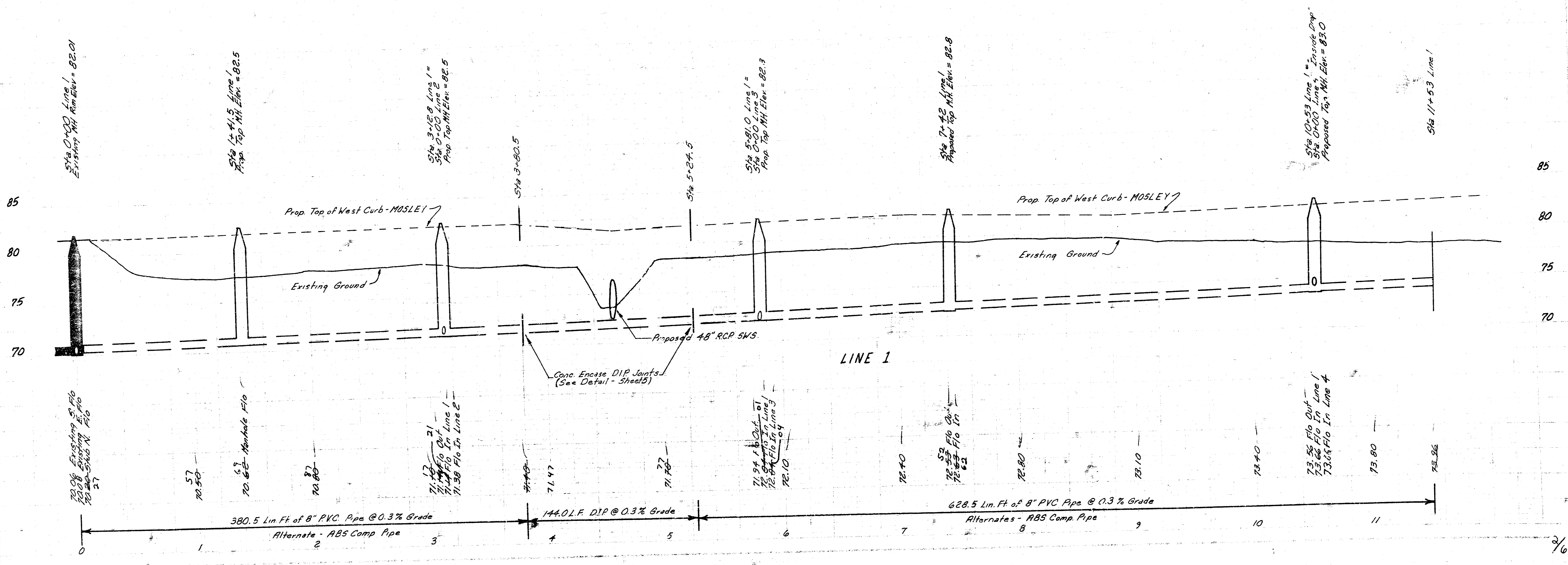
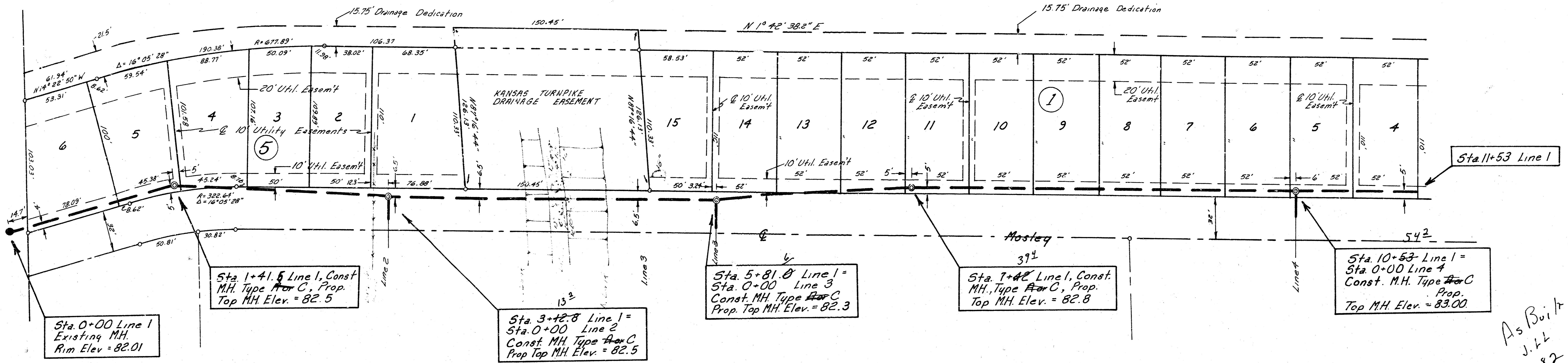


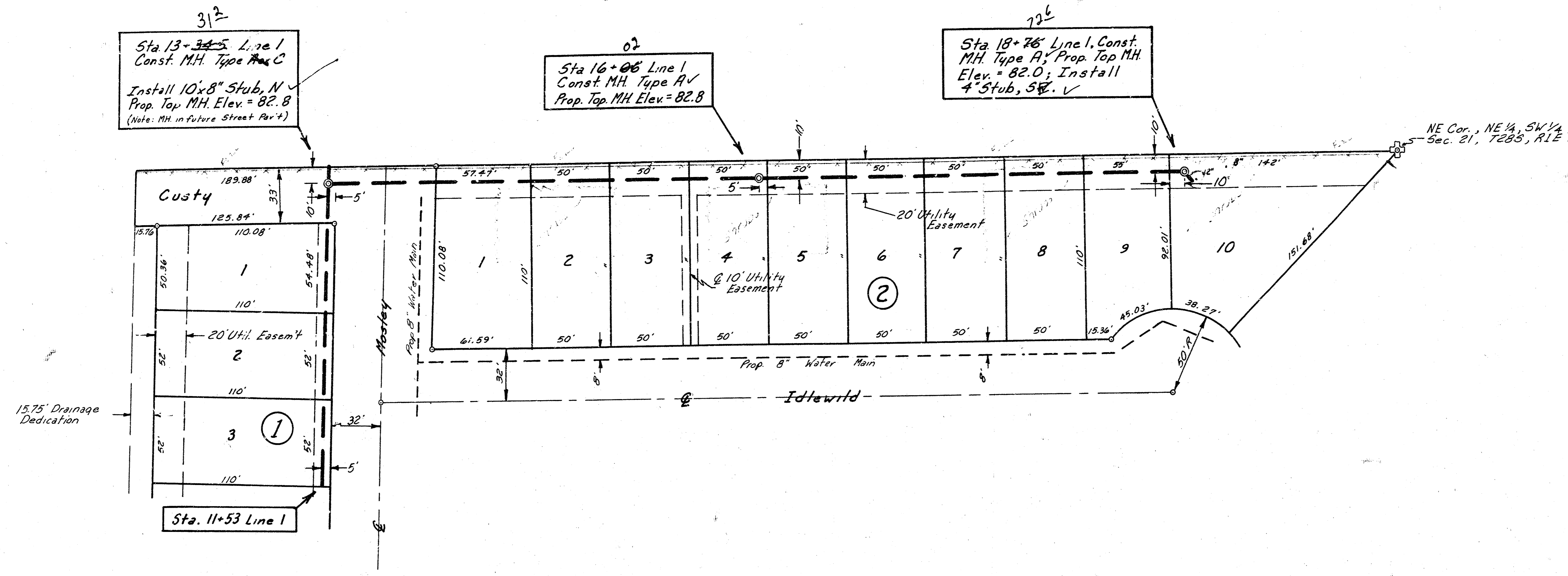
Fig 2-17-82

SCALE: 1" = 40' Plan
 1" = 40' Profile
 1" = 5' Profile



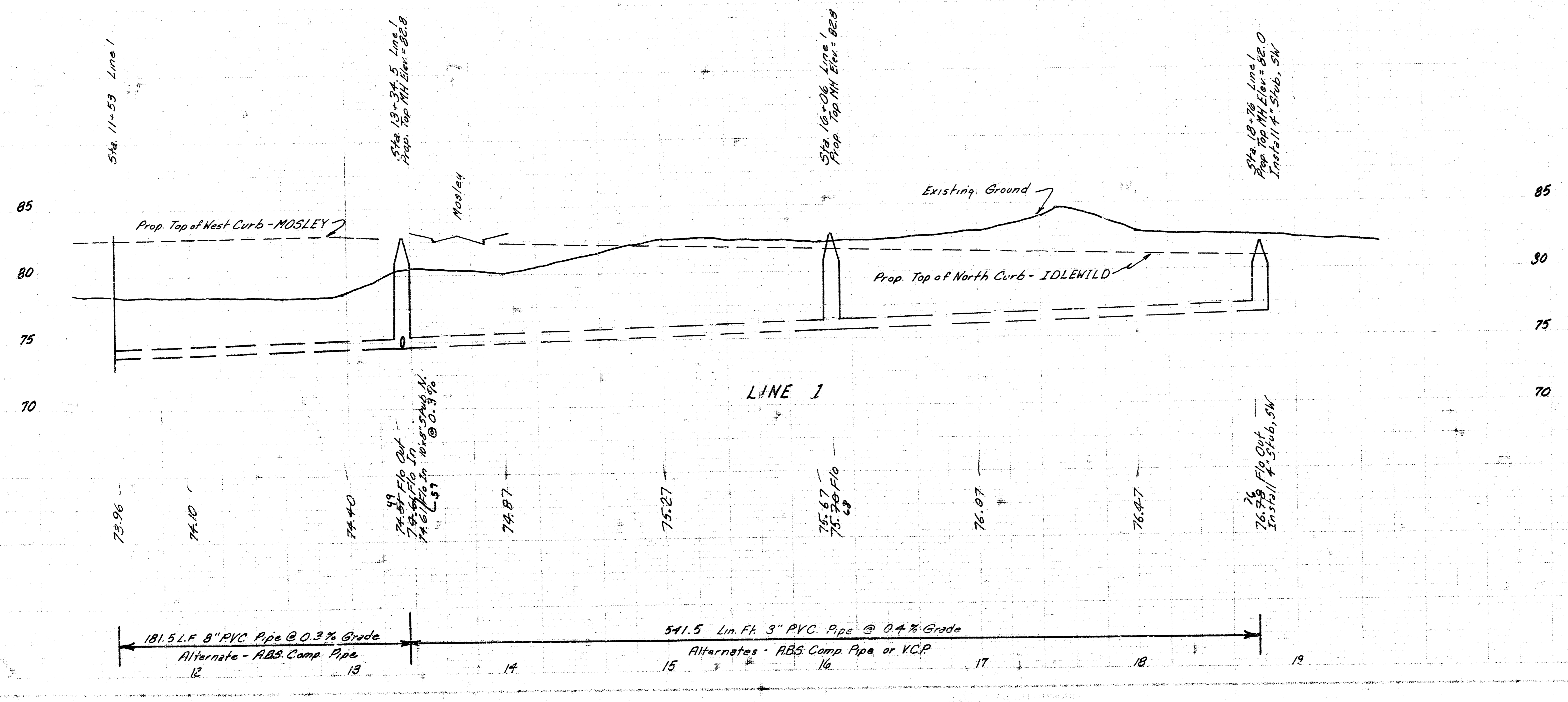
As Built
 J.L.L.
 6-82

LATERAL 20, MAIN 2, S.W. I.
 PROJECT NO. 468-76-245-81086-000-000-001
 LINE 1 SHEET 3



SCALE: 1" = 40' Plan
 Hrs 1" = 40' Profile
 Vert. 1" = 5'

As Built
 6.82
 J.L.L.



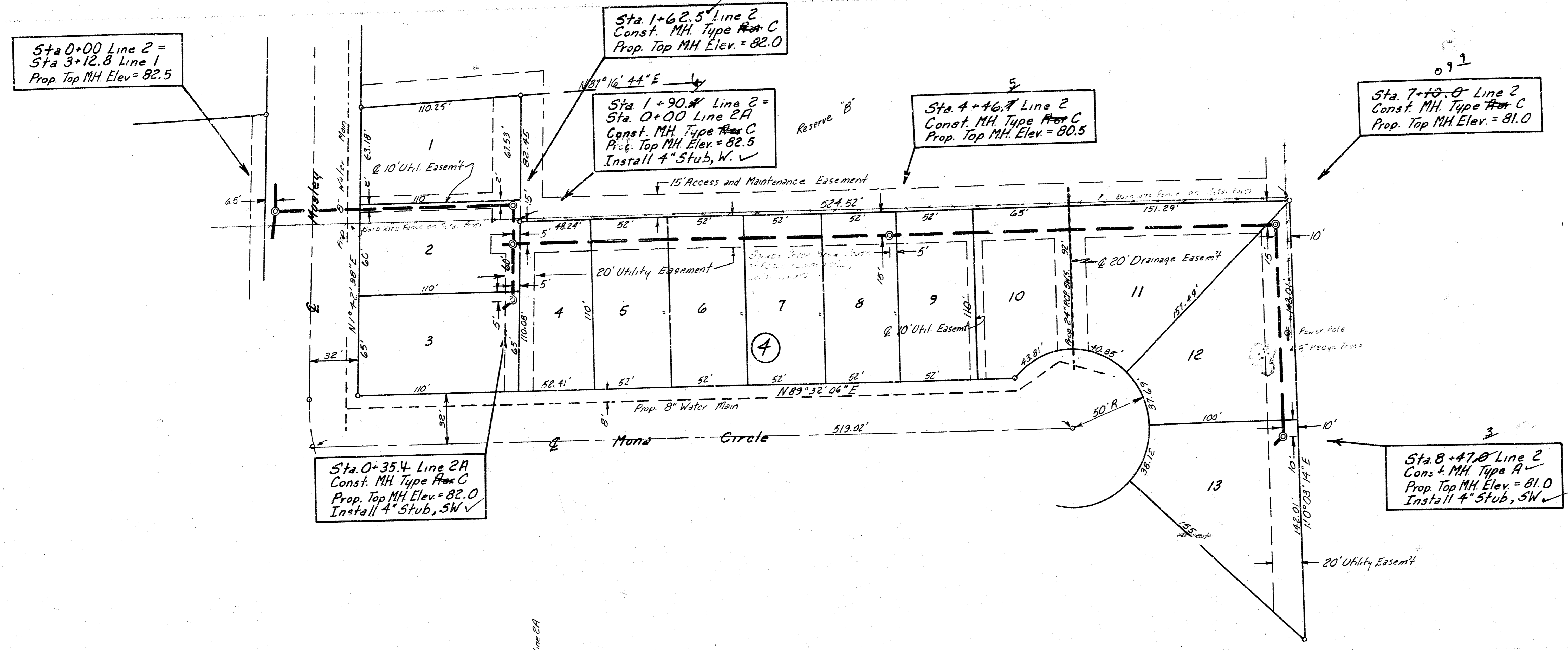
M. Ruppel
 J. Lindsey
 12/81
 1/82

M.R.P.'S

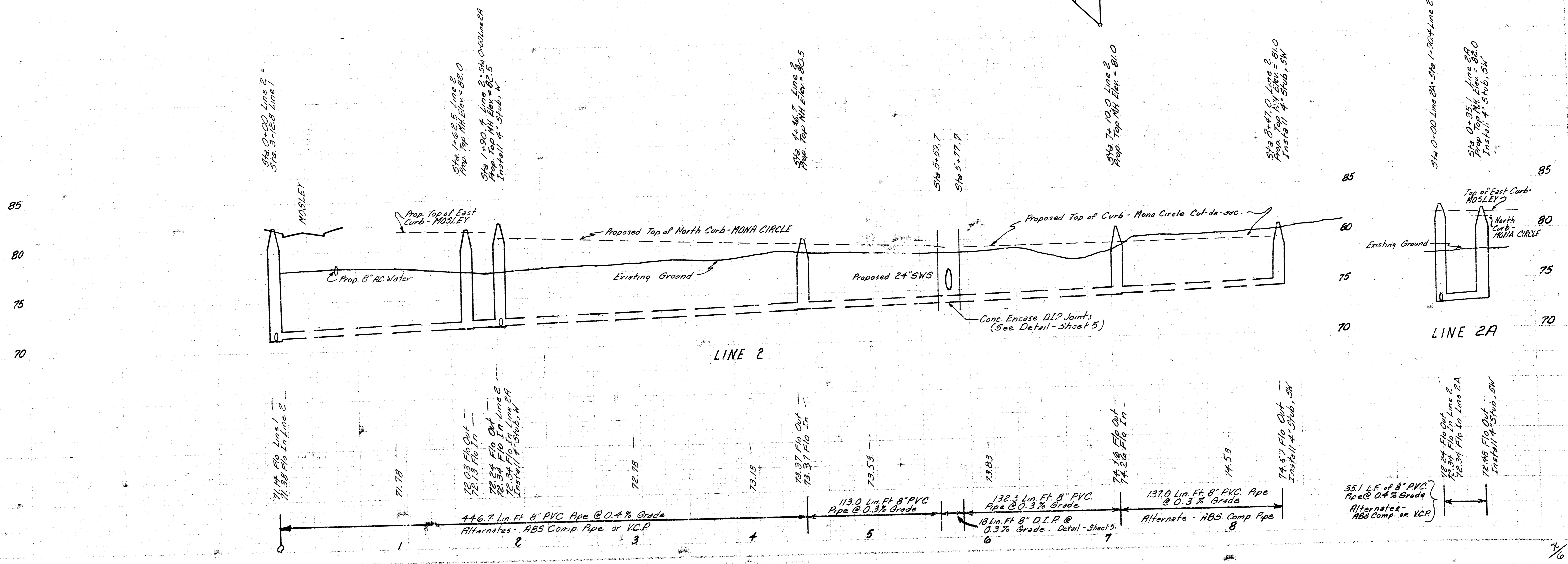
M. Ruppel
 J. Lindsey
 12/81
 1/82

M.R.P.'S

LATERAL 20, MAIN 2, S.W.I.
 PROJECT NO. 468-76-245-81086-000-000 001
 LINE 2 & 2A SHEET 4



SCALE: 1" = 40' Plan
 Horiz. 1" = 40' Profile
 Vert. 1" = 5' Profile

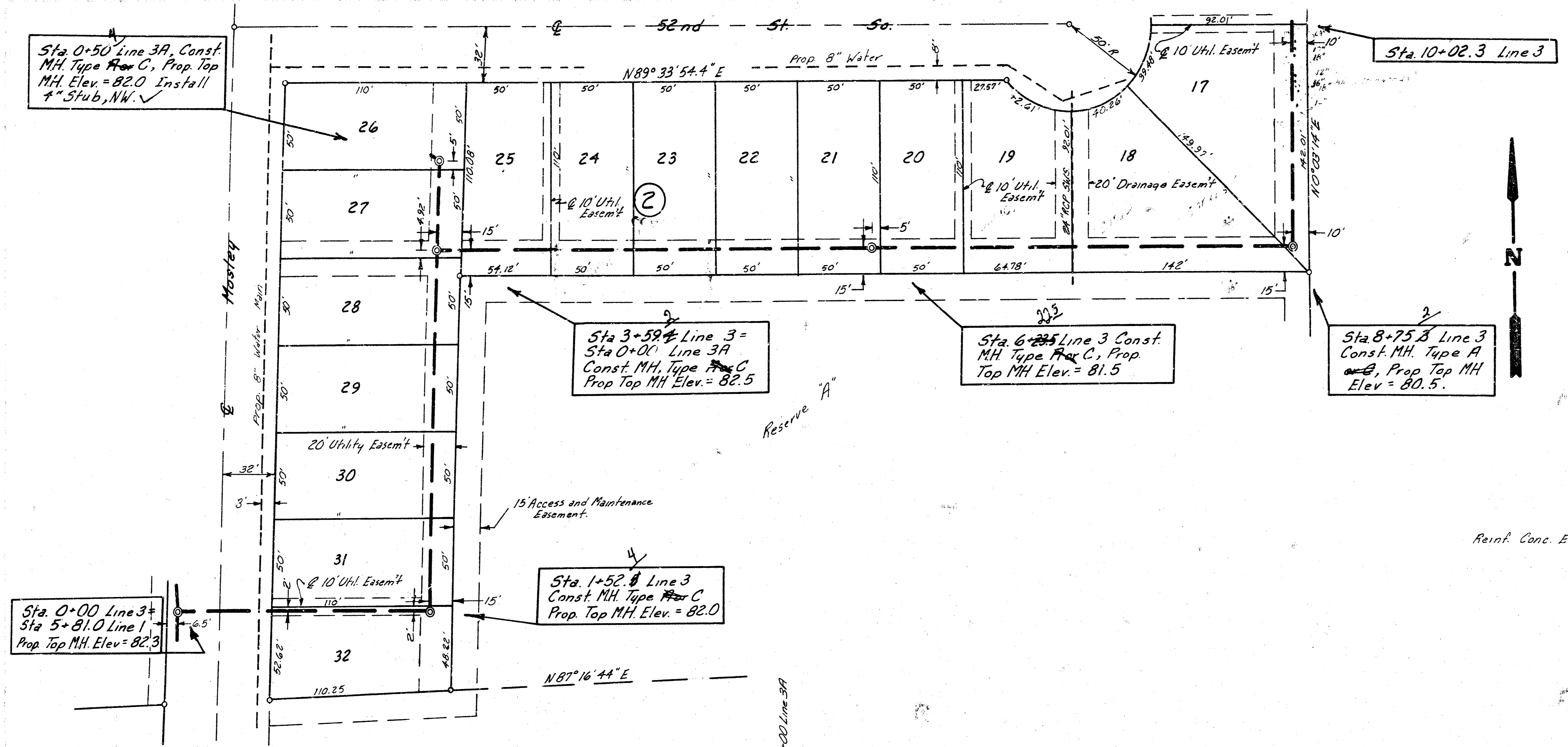


12/81
 J. Lindzey

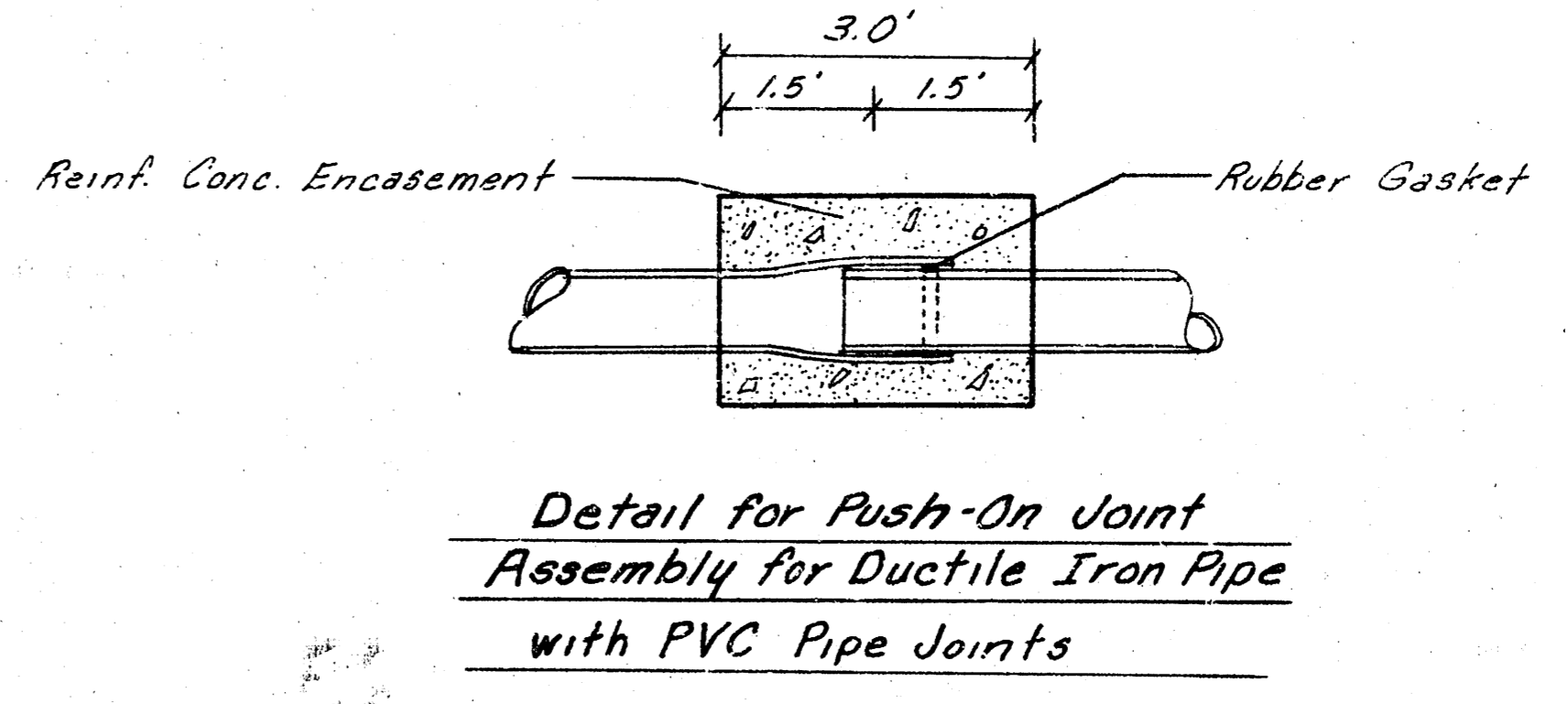
12/81
 J. Lindzey

12/81
 J. Lindzey

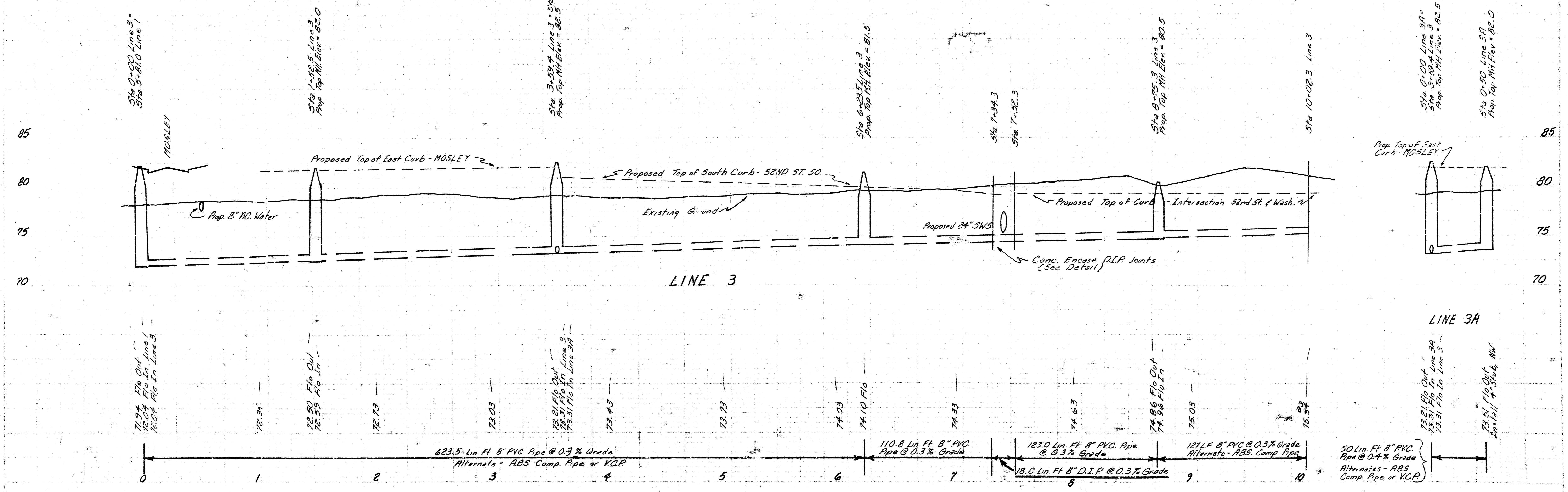
LATERAL 20, MAIN 2, S.W.I.
 PROJECT NO. 468-76-245 91086-000-000-001
 LINE 3 & 3A SHEET 5



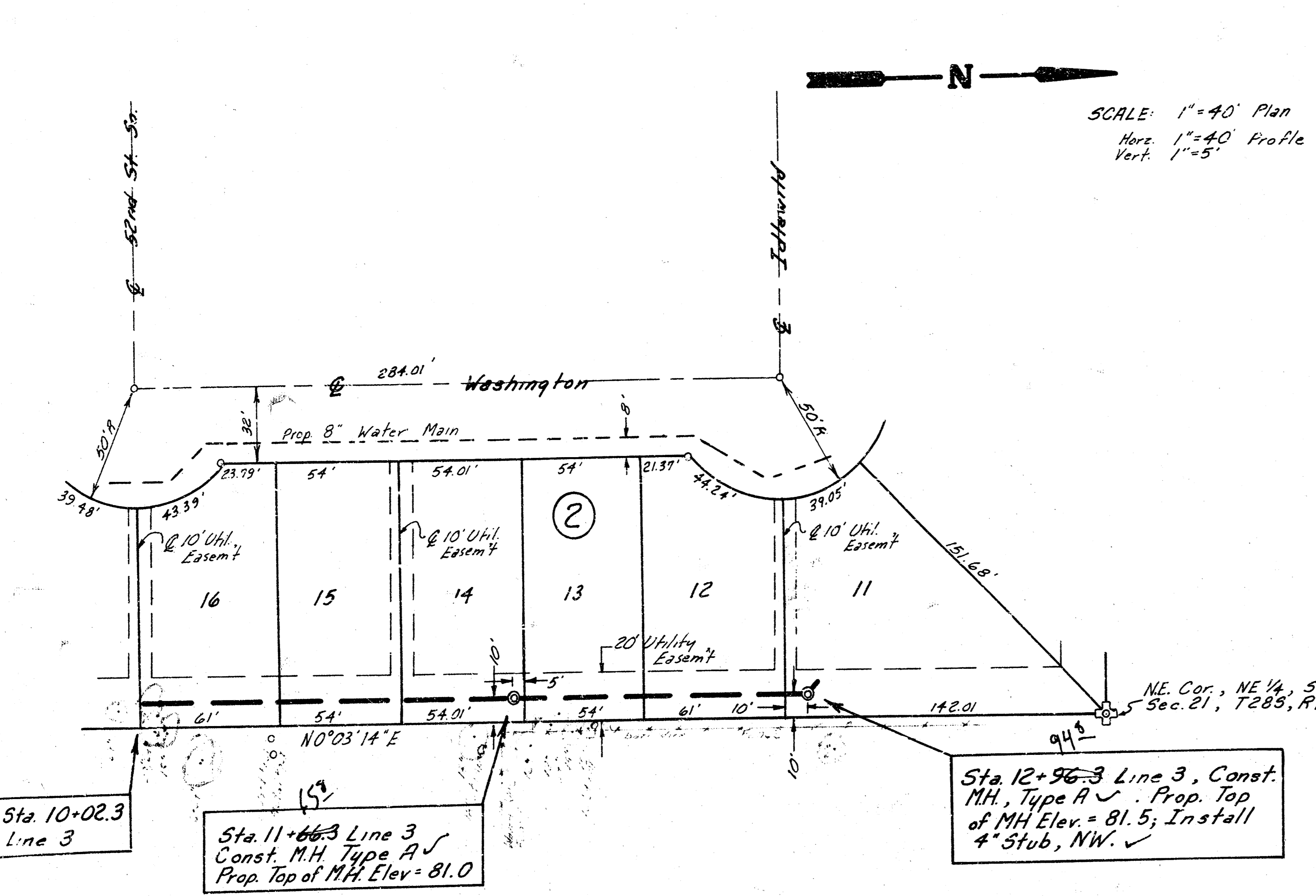
SCALE: 1"=40' Plan
 Horiz. 1"=40' Profile
 Vert. 1"=5' Profile



As Built
 JLL
 6-82



LATERAL 20, MAIN 2, S.W. I.
 PROJECT NO. 468-76-245-81086-000-000-001
 LINE 3 & 4 SHEET 6



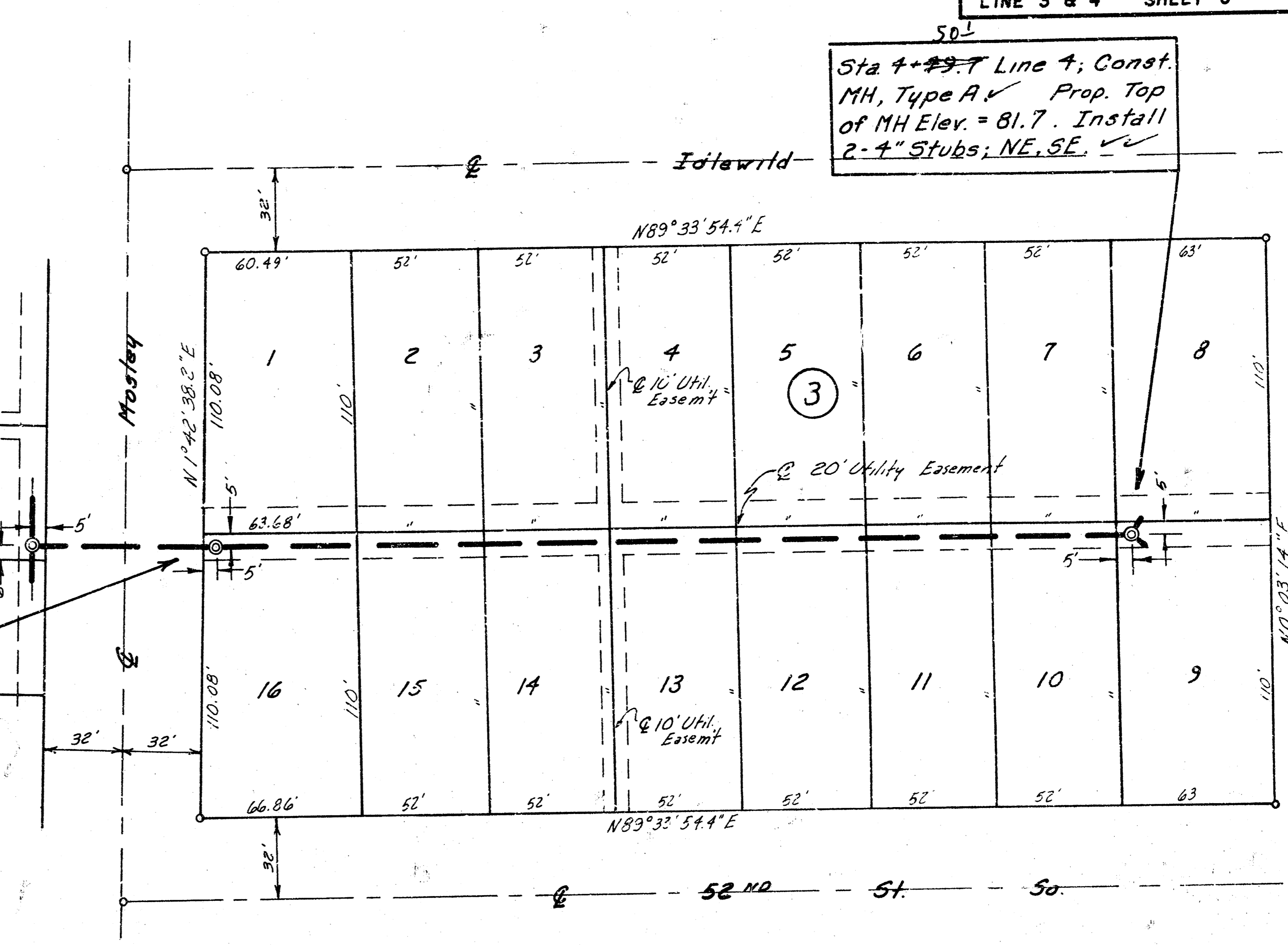
Sta 0+00 Line 4 =
 Sta 10+53 Line 1;
 Const. MH, Type A or C;
 Prop. Top of MH Elev. = 83.0

Sta 0+74 Line 4; Const.
 MH, Type A or C; Prop.
 Top of MH Elev. = 83.0

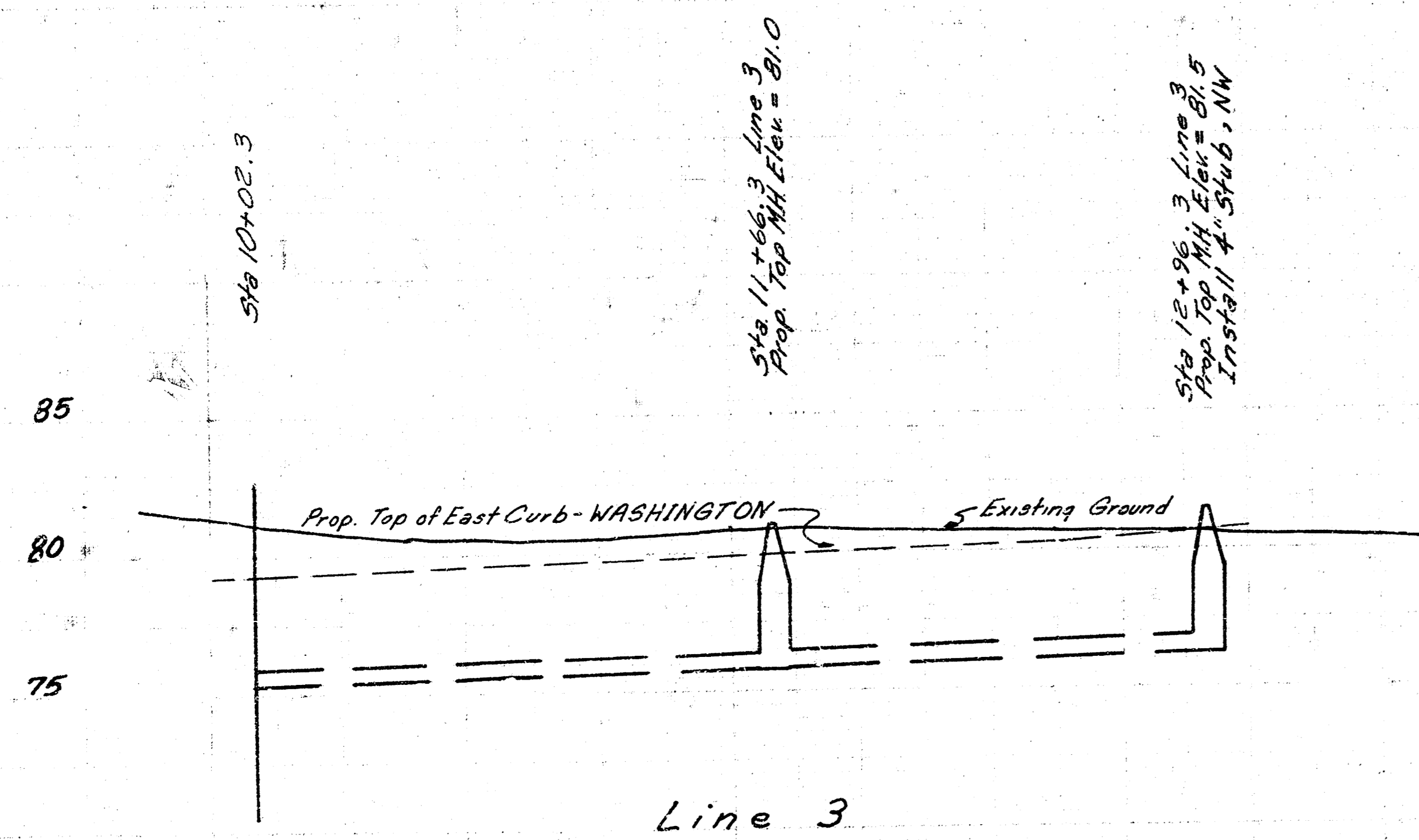
Sta 12+96 Line 3, Const.
 MH, Type A; Prop. Top
 of MH Elev. = 81.5; Install
 4" Stub, NW.

Sta 11+66 Line 3
 Const. MH Type A
 Prop. Top of MH Elev. = 81.0

Sta 10+02.3
 Line 3

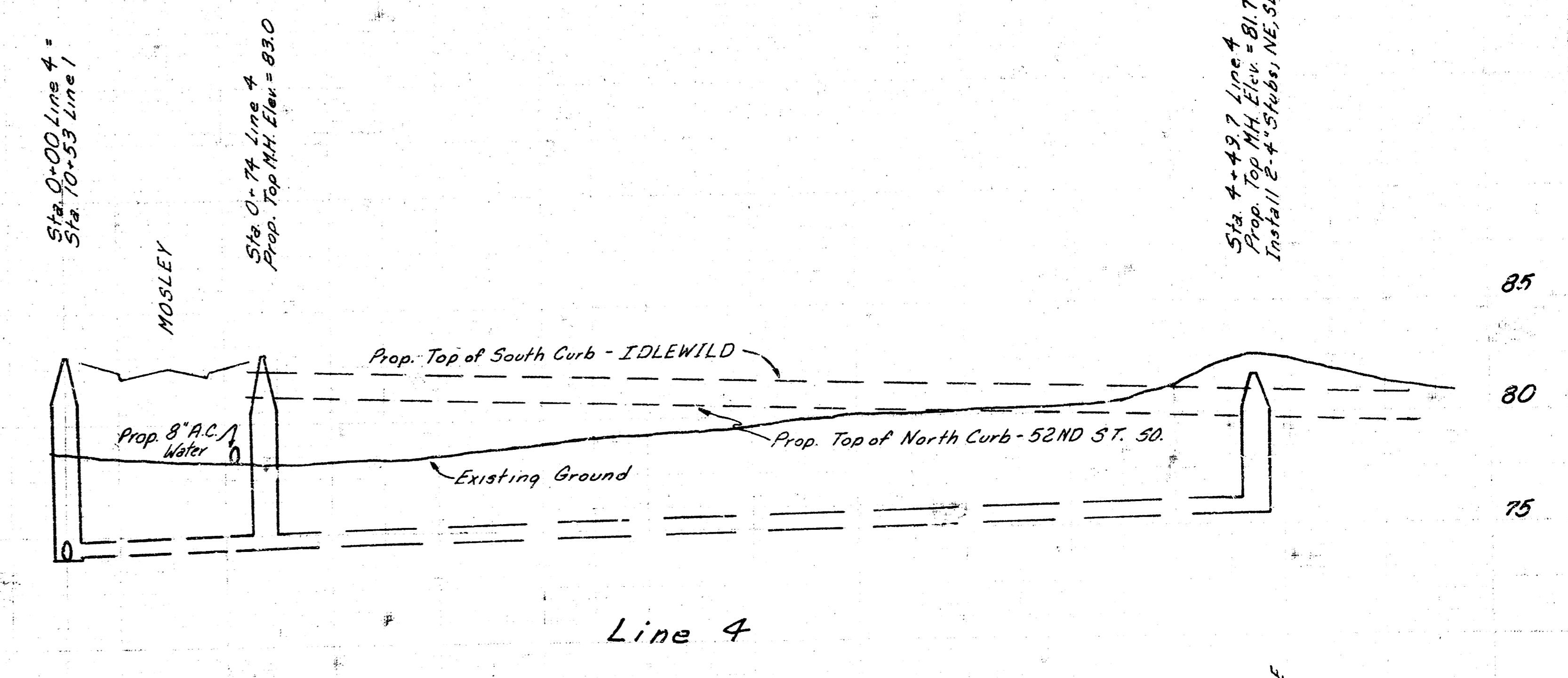


Sta 4+49 Line 4; Const.
 MH, Type A; Prop. Top
 of MH Elev. = 81.7. Install
 2-4" Stubs; NE, SE.



Install 294.0 Lin. Ft. 8" PVC @ 0.3% Grade
 Alternate - RBS Composite Pipe

75.34 75.63 75.83 F10 75.73 76.22 F10 Out Install 11" 4" Stub, NW



Install 449.7 Lin. Ft. 8" PVC Pipe @ 0.4% Grade
 Alternates - ABS Comp. Pipe or KCP.

73.56 F10 Out 73.66 F10 In Line 1 73.66 F10 In Line 4 73.96 F10 Out 73.95 F10 In 74.06 74.46 74.86 75.26 75.46 F10 Out Install 2-4" Stubs, NE, SE

As Built
 J.L.L.
 6/82