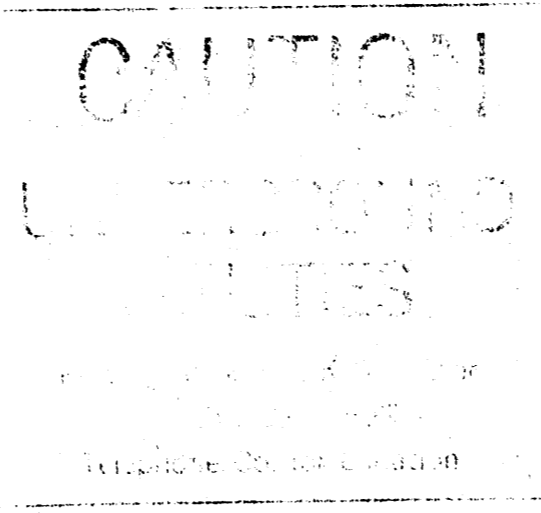
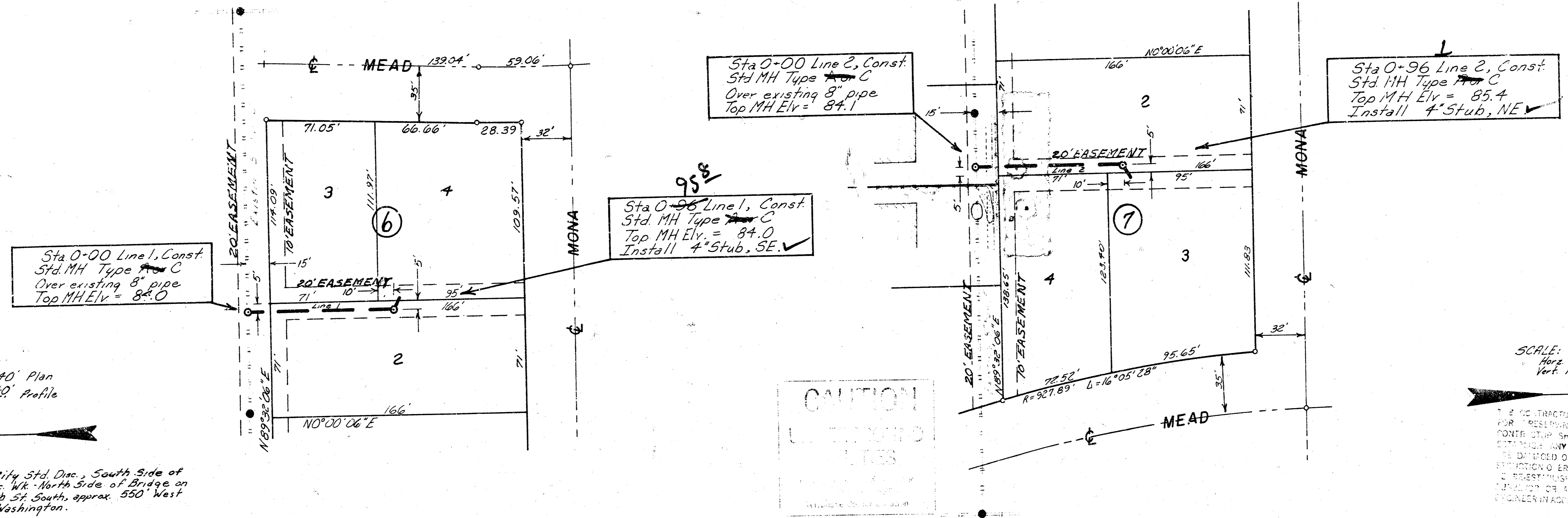


Riverside 4TH Addition

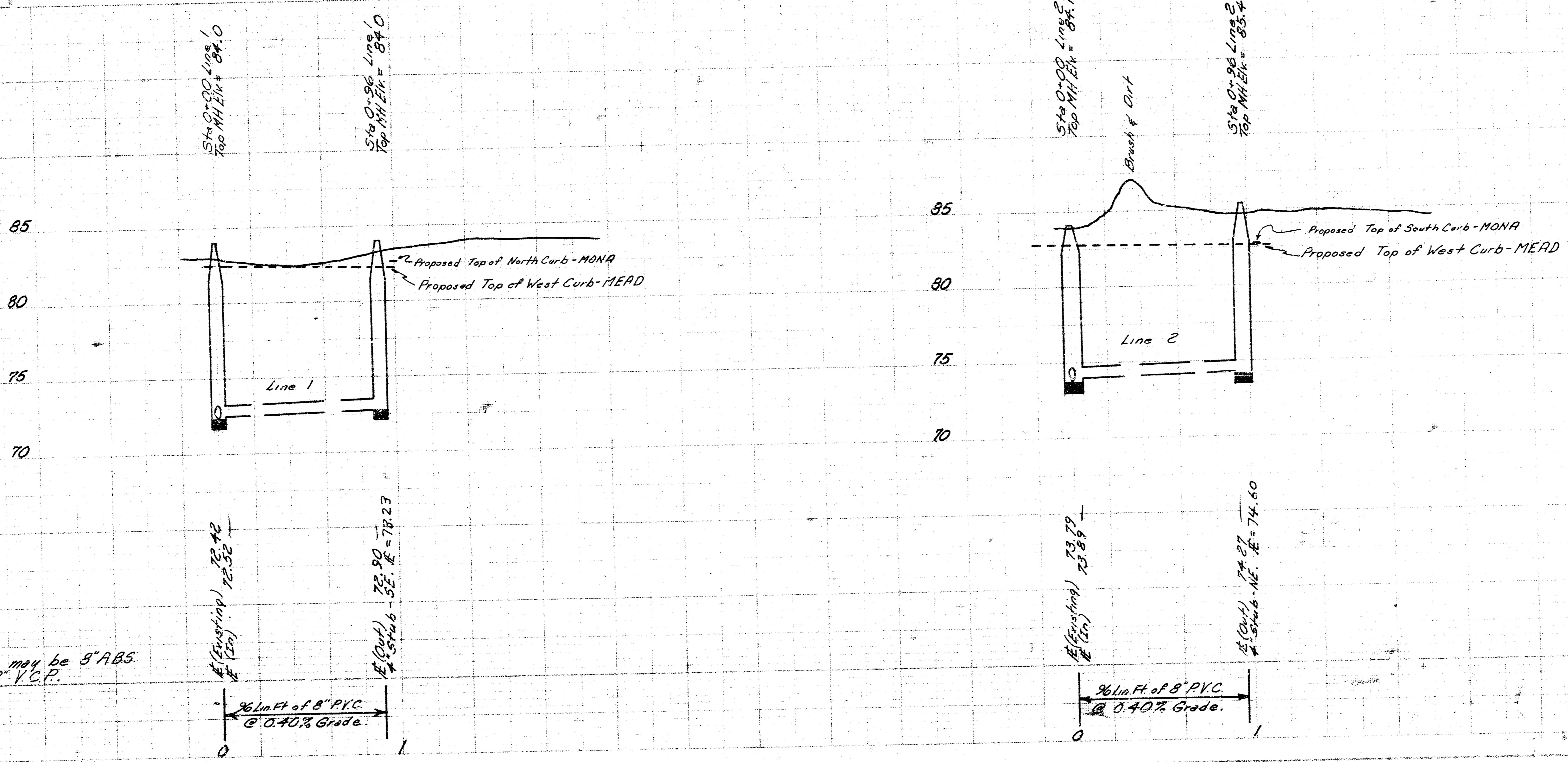
SCALE: 1"=40' Plan
 Horiz. 1"=40' Profile
 Vert. 1"=5'

SCALE: 1"=40' Plan
 Horiz. 1"=40' Profile
 Vert. 1"=5'

Bench Mark: 8123 - City Std. Disc., South Side of
 Conc. Wk. North Side of Bridge on
 55th St. South, approx. 550' West
 of Washington.



CONTRACTOR SHALL BE RESPONSIBLE FOR RESURFACING AND CITY IRONS. THE CONTRACTOR SHALL BE REQUIRED TO RE-INSTALL ANY MISSING IRONS WHICH ARE DAMAGED OR DESTROYED BY HIS CONSTRUCTION OPERATIONS. SUCH IRONS SHALL BE FURNISHED BY A LICENSED CONTRACTOR OR A LICENSED PROFESSIONAL ENGINEER IN ACCORDANCE WITH STATE LAWS.



Note: Alternate pipe may be 8" ABS Comp. Pipe or 8" V.C.P.

As Built
 J & J
 11/81



SHEET 1 of 1
LAT. 21, MAIN 2, S.W.I.
 CITY OF WICHITA, KANSAS
R.W. BRUGGEMAN
 DIRECTOR OF ENGINEERING / CITY ENGINEER
 PROJ. NO. 468-76-245-81087-000-000-001