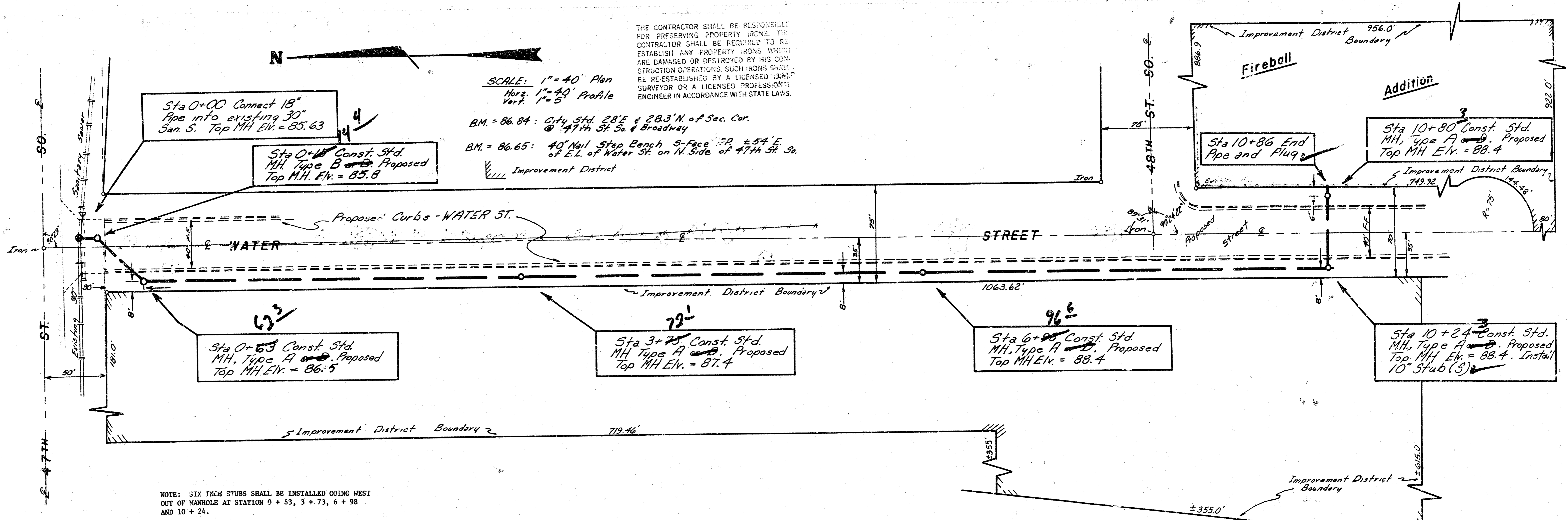


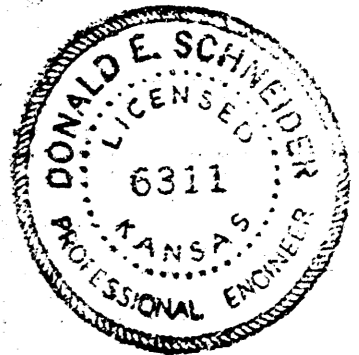
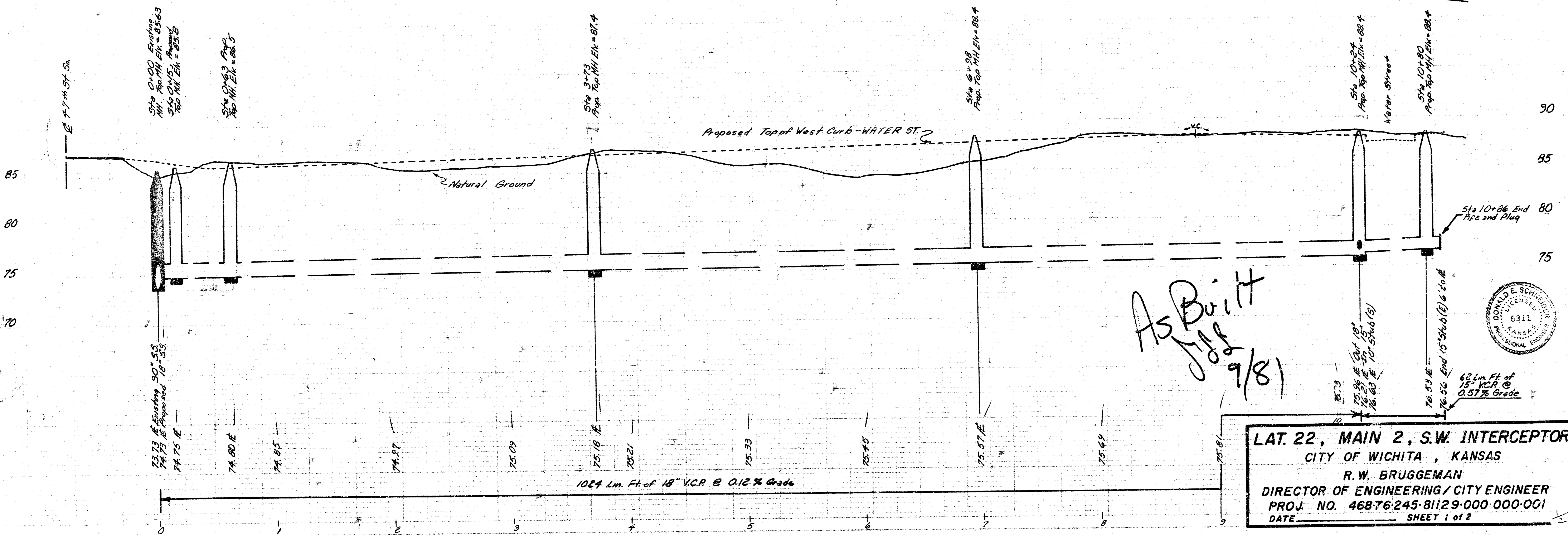
THE CONTRACTOR SHALL BE RESPONSIBLE FOR PRESERVING PROPERTY IRONS. THE CONTRACTOR SHALL BE REQUIRED TO RE-ESTABLISH ANY PROPERTY IRONS WHICH ARE DAMAGED OR DESTROYED BY HIS CONSTRUCTION OPERATIONS. SUCH IRONS SHALL BE RE-ESTABLISHED BY A LICENSED LAND SURVEYOR OR A LICENSED PROFESSIONAL ENGINEER IN ACCORDANCE WITH STATE LAWS.

SCALE: 1" = 40' Plan  
 Horiz. 1" = 40' Profile  
 Vert. 1" = 5'

B.M. = 86.84: City Std. 28'E & 28.3' N. of Sec. Cor. @ 47th St. So. & Broadway  
 B.M. = 86.65: 40' Nail Step Bench S-Face 7.2' ± 5.4' E. of E.L. of Water St. on N. Side of 47th St. So.



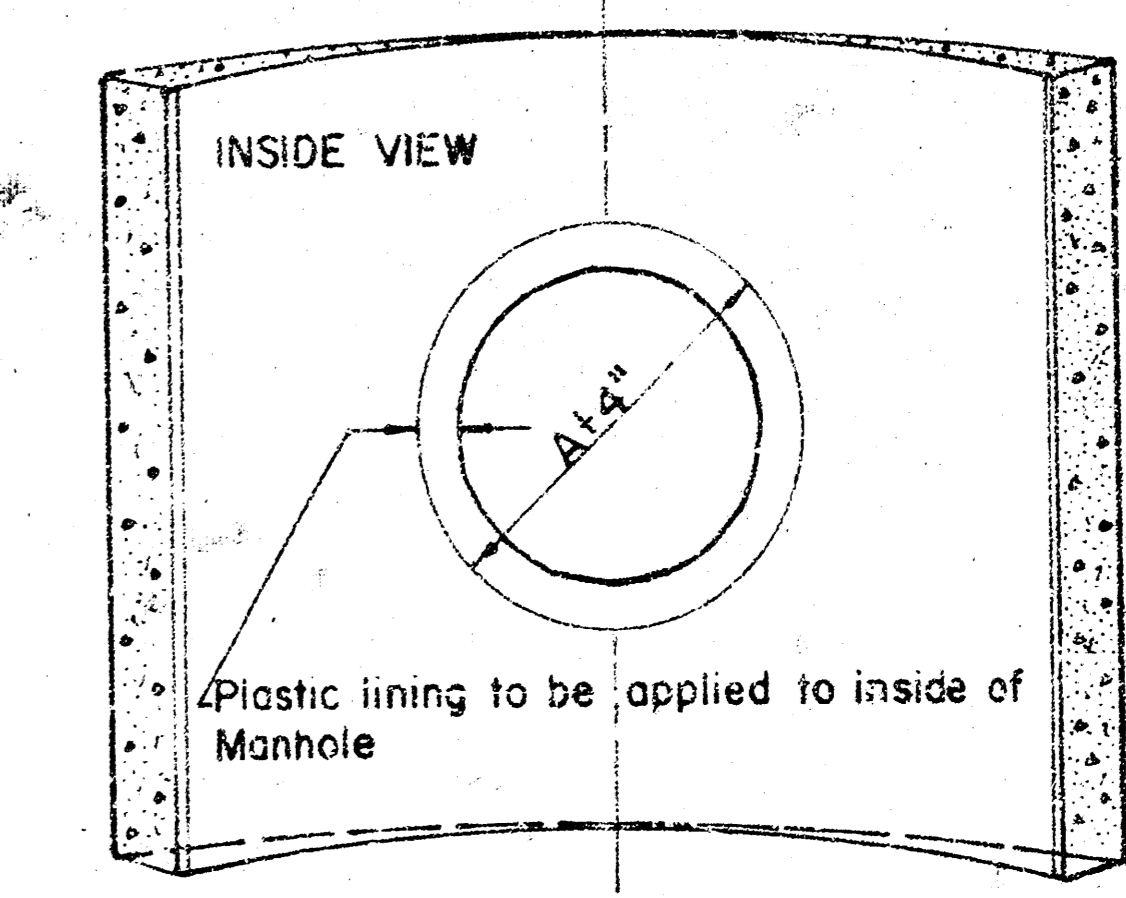
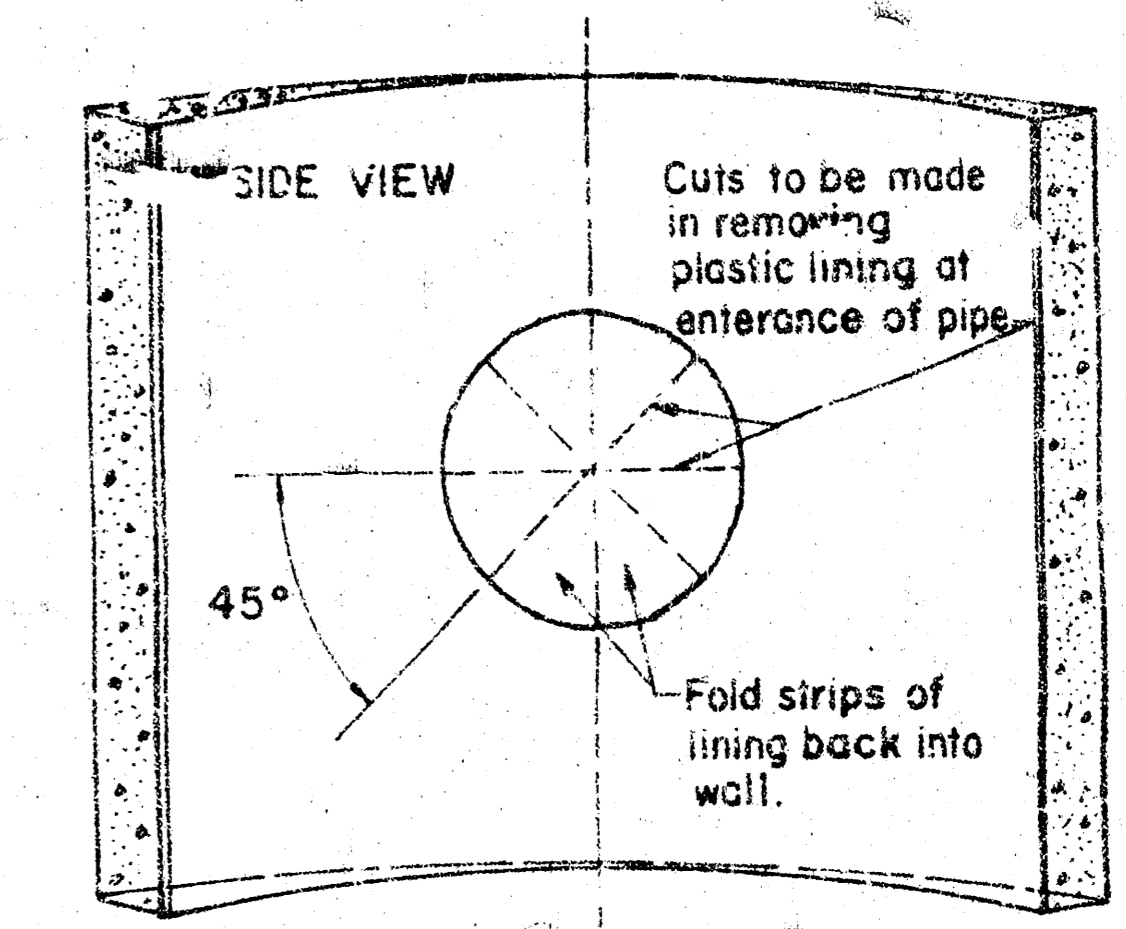
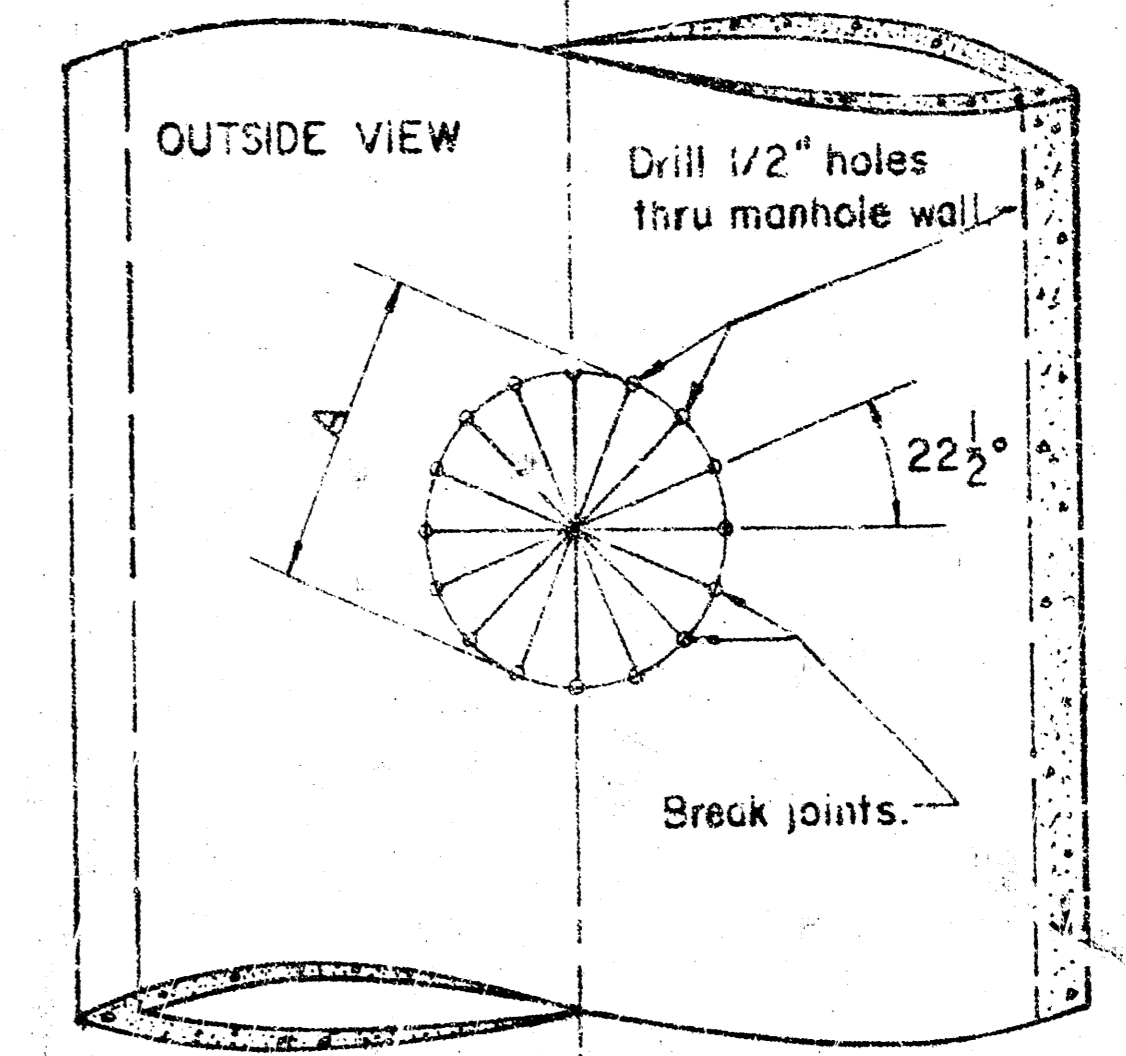
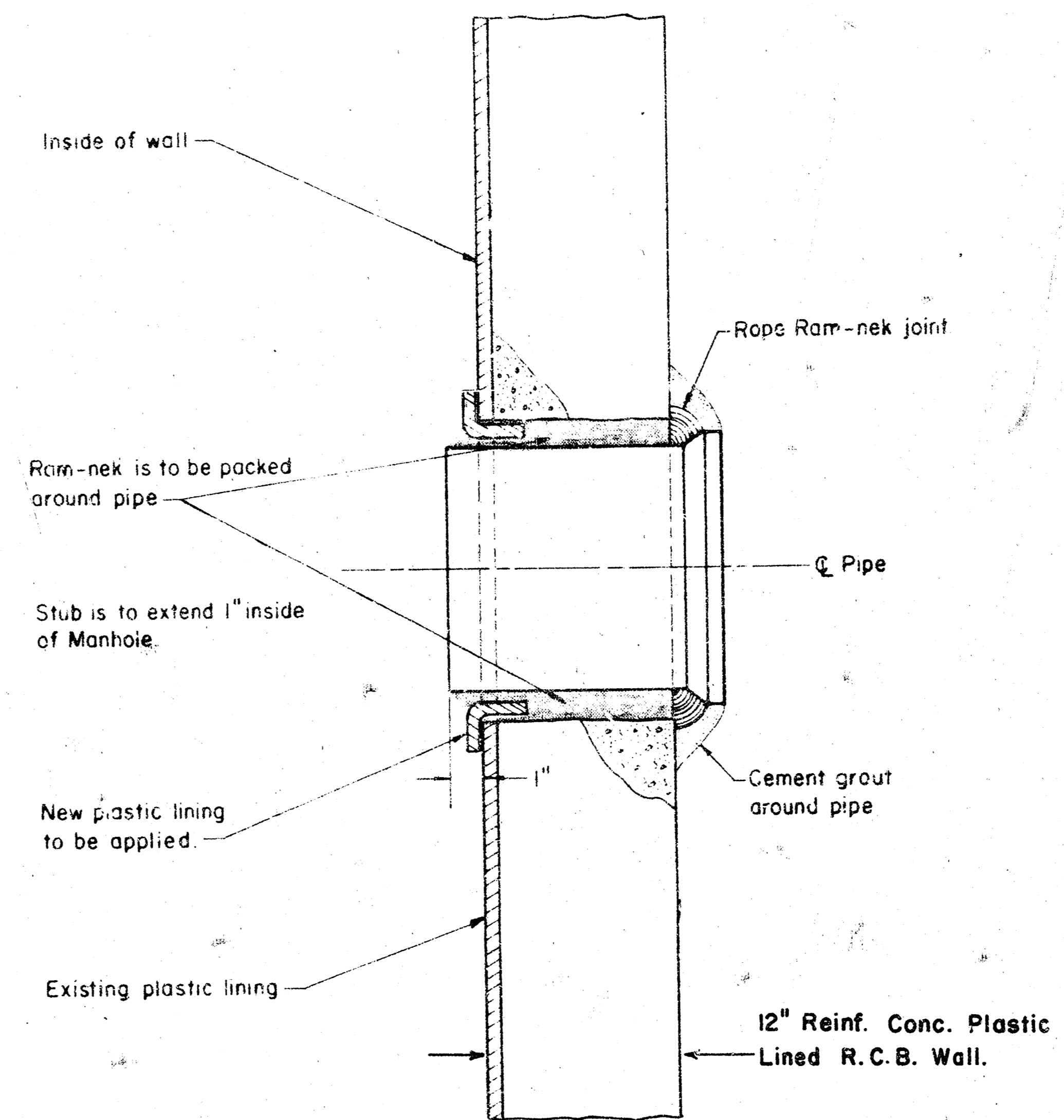
NOTE: SIX IRON STUBS SHALL BE INSTALLED GOING WEST OUT OF MANHOLE AT STATION 0 + 63, 3 + 75, 6 + 90 AND 10 + 24.



**LAT. 22, MAIN 2, S.W. INTERCEPTOR**  
 CITY OF WICHITA, KANSAS  
 R. W. BRUGGEMAN  
 DIRECTOR OF ENGINEERING / CITY ENGINEER  
 PROJ. NO. 468-76-245-81129-000-000-001  
 DATE \_\_\_\_\_ SHEET 1 of 2

From East Plan, D. Gray, 6/81  
 DOC 850

Public Works Division, S. Lindsey, 6/81



NOTE: DRAWING DEPICTS CONNECTION TO STRUCTURAL TEE MANHOLE BUT THESE SAME REQUIREMENTS ARE TO APPLY TO CONNECTION TO BE MADE TO THE PLASTIC LINED REINFORCED CONCRETE BOX MANHOLE AT STATION 0 + 00.

A = OUTSIDE DIAMETER OF PIPE + 2"

DRAWN: Oct. 1978  
 DETAIL OF PIPE CONNECTION  
 TO STRUCTURAL TEE MANHOLE  
 CITY OF WICHITA, KANSAS  
 LAT. 22, MAIN 2, S.W. INTERCEPTOR  
 PROJECT NUMBER: 468-76-245-81129-003-000-001  
 DATE: SHEET 2 of 2

FILMED FROM THE BEST  
 AVAILABLE COPY