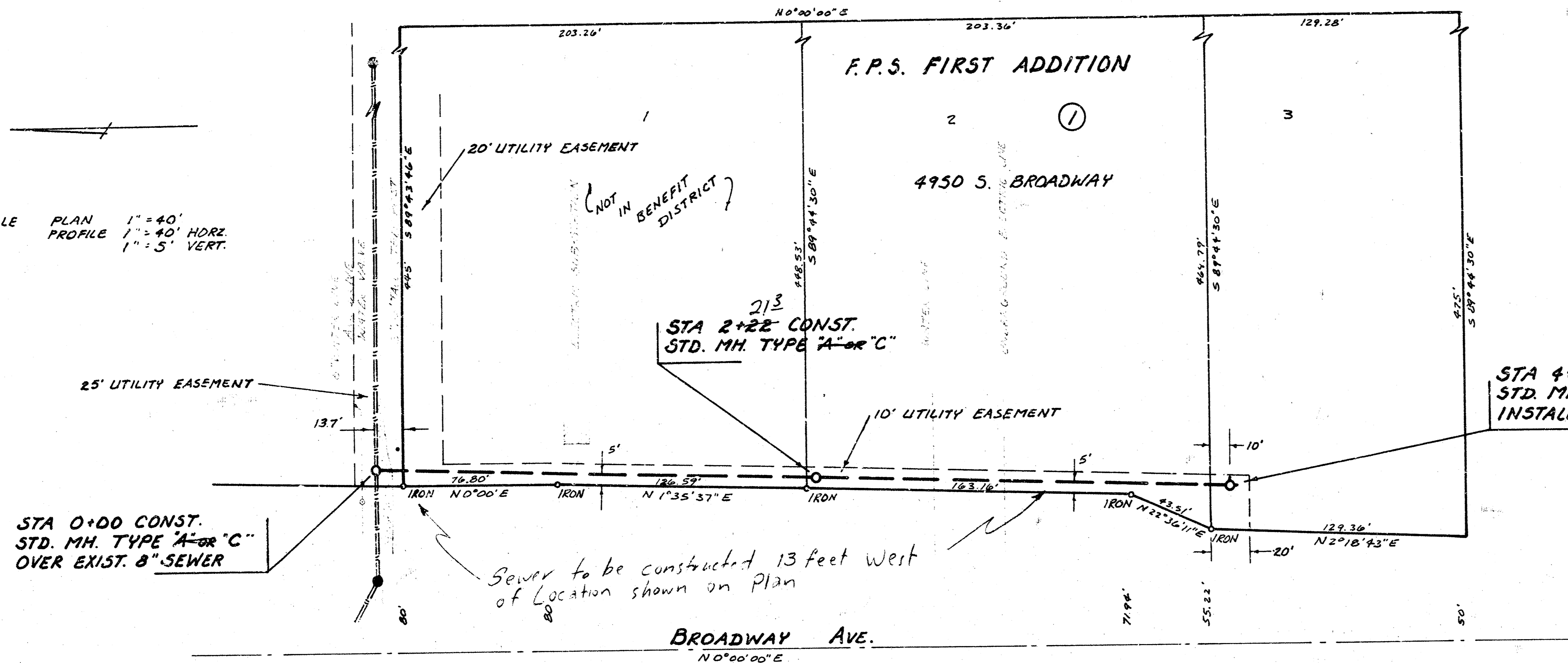


SCALE PLAN 1"=40'
PROFILE 1"=40' HORIZ.
1"=5' VERT.



THE CONTRACTOR SHALL BE RESPONSIBLE FOR PRESERVING PROPERTY IRONS. THE CONTRACTOR SHALL BE REQUIRED TO RE-ESTABLISH ANY PROPERTY IRONS WHICH ARE DAMAGED OR DESTROYED BY HIS CONSTRUCTION OPERATIONS. SUCH IRONS SHALL BE RE-ESTABLISHED BY A LICENSED LAND SURVEYOR OR A LICENSED PROFESSIONAL ENGINEER IN ACCORDANCE WITH STATE LAWS.

STA 0+00 CONST. STD. MH. TYPE "A" OR "C" OVER EXIST. 8" SEWER

STA 2+22 CONST. STD. MH. TYPE "A" OR "C"

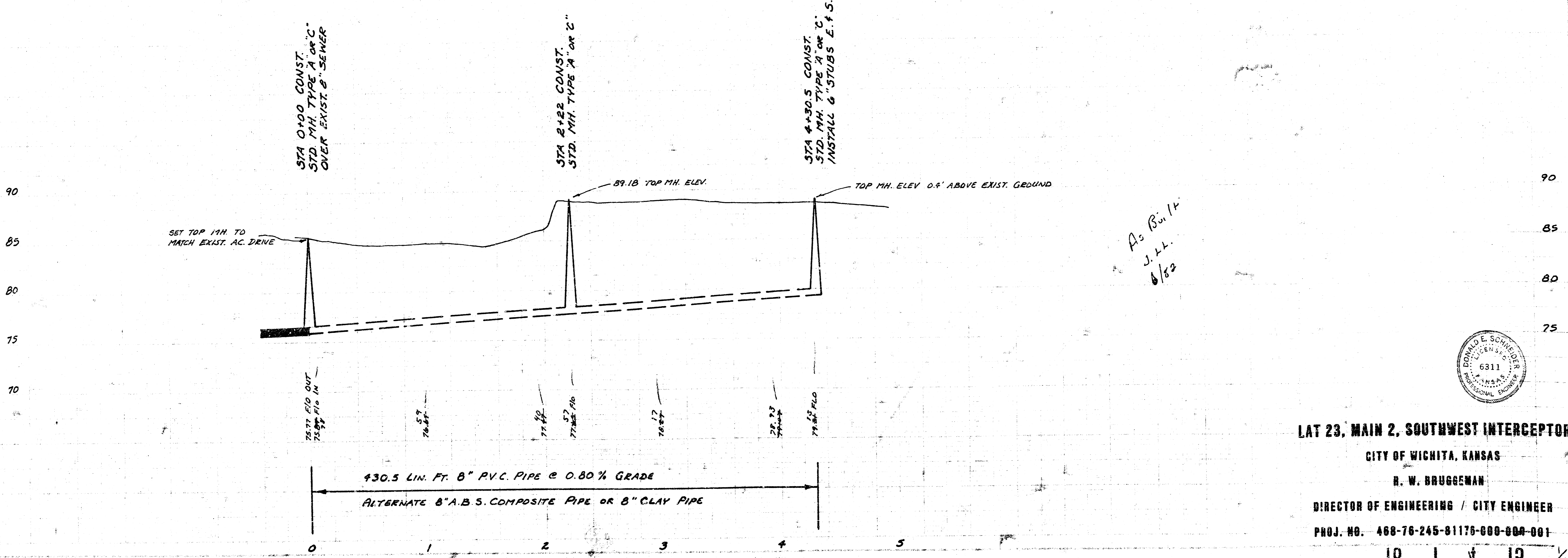
STA 4+30.5 CONST. STD. MH. TYPE "A" OR "C" INSTALL 6" STUBS E. & S.

STA 0+00 CONST. STD. MH. TYPE "A" OR "C" OVER EXIST. 8" SEWER

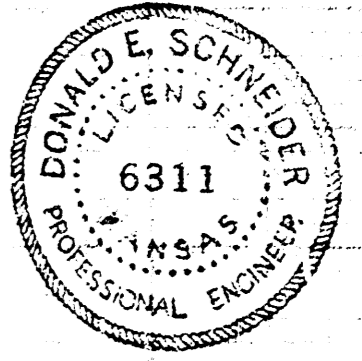
STA 2+22 CONST. STD. MH. TYPE "A" OR "C"

STA 4+30.5 CONST. STD. MH. TYPE "A" OR "C" INSTALL 6" STUBS E. & S.

B.M. 86.84 CITY STD. DISC. 28'E. & 28.3' N. OF 1/4 SEC. CORNER AT 47TH ST. SO. & BROADWAY.
B.M. 87.15 40 PENNY NAIL SE. FACE P.P. 40' N. OF NL. 48TH ST. SO. ON W. SIDE BROADWAY.



As Bui. 14
J.H.
6/82



LAT 23, MAIN 2, SOUTHWEST INTERCEPTOR
CITY OF WICHITA, KANSAS
R. W. BRUGGEMAN
DIRECTOR OF ENGINEERING / CITY ENGINEER
PROJ. NO. 468-76-245-81176-000-000-001