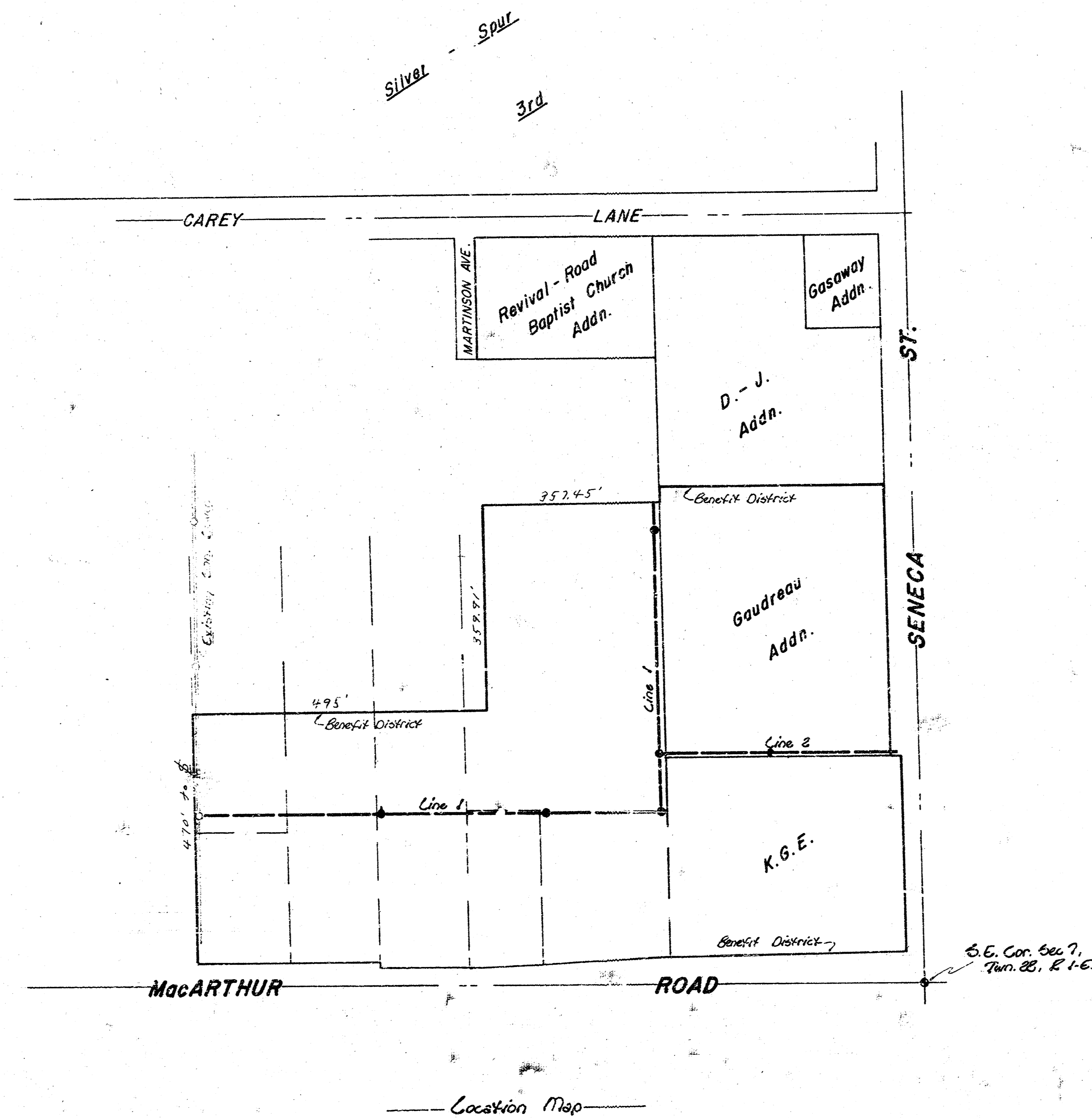


LAT 2, MAIN 3,
SOUTHWEST INTERCEPTOR
PROJECT NO.
468-76-245-80032-000-000-001



Note -

Field Engineer to take ties and any "irons" moved or destroyed due to construction shall be replaced.
Contractor to use caution around the 12" High Pressure Gas Service Co. Line in West side of Seneca.
Manhole tops to be set at least 4" above top of existing ground.
Risers to be constructed where necessary to serve existing homes.
Field Engineer to verify necessary locations.
Contractor to verify any other utility locations in the vicinity of Sewer Line construction.
Contractor to verify and locate an electric line crossing at approximately Sta. 4+30, Line 1. Removal and replacement of this line shall be considered incidental to C.F. Pipe.
A 60' Tolson Cities Service Pipeline Co. Easement exists in ... Gaudreau Addn. The pipeline has been removed from this Easement.

As Built
5/8/88

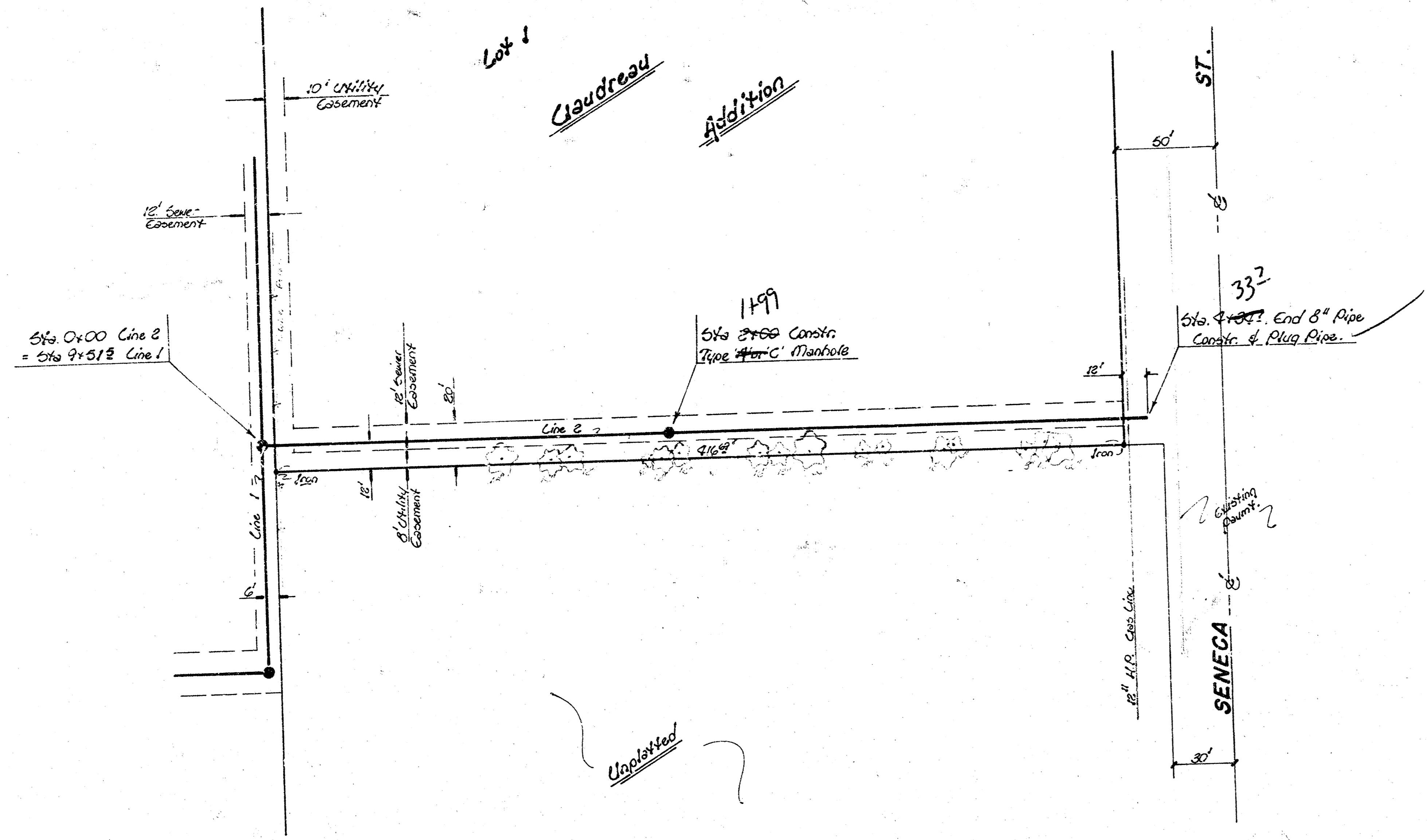
NOTE: ACCESS TO PROJECT SITE WILL BE FROM SENECA STREET ADJACENT TO AND ALONG THE NORTH SIDE OF LINE #2. ADDITIONAL WORKING AREA OUTSIDE OF EASEMENTS SHALL BE CONFINED TO AS SMALL AN AREA AS POSSIBLE ON THE NORTH SIDES AND THE WEST SIDES OF THE SEWER ALIGNMENT EXCEPT WHERE OTHERWISE RESTRICTED BY THE PLANS.



CITY OF WICHITA, KS.
R.W. BRUGEMAN — DIR. ENGINEERING
Date

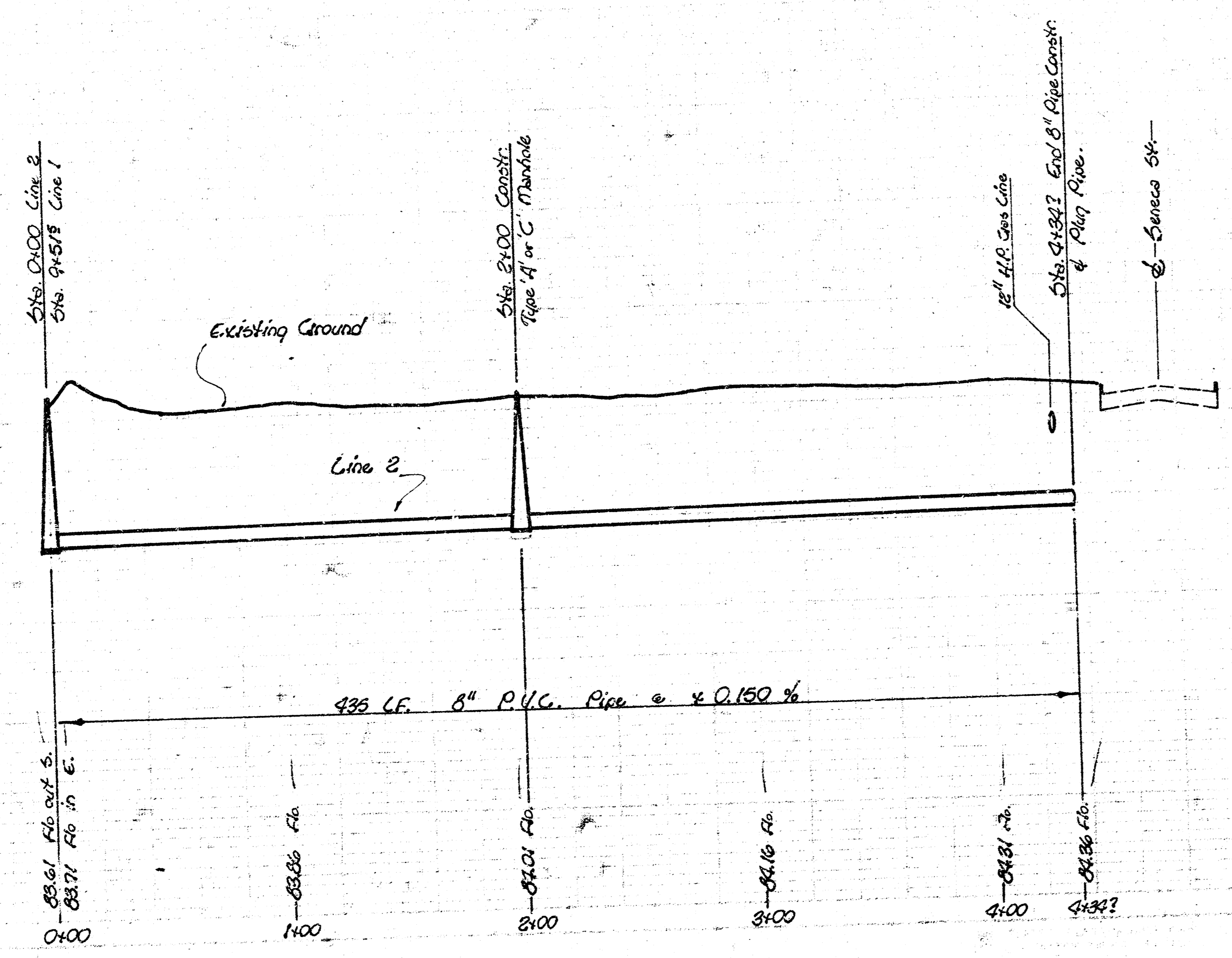
BAUGHMAN COMPANY, P.A.
SURVEYING & ENGINEERING
316/262-7271 • 330 LAURA • WICHITA, KANSAS 67211

PLANNED FROM THE BEST



Scale:
 Plan: 1" = 40'
 Profile: 1" = 30' Hor
 1" = 5' Vert.

95
 90
 85
 80



As Built
 5/8/88
 JLL

Lot 2, Main 3, S.W.I.

4/4
 1/4 SE

