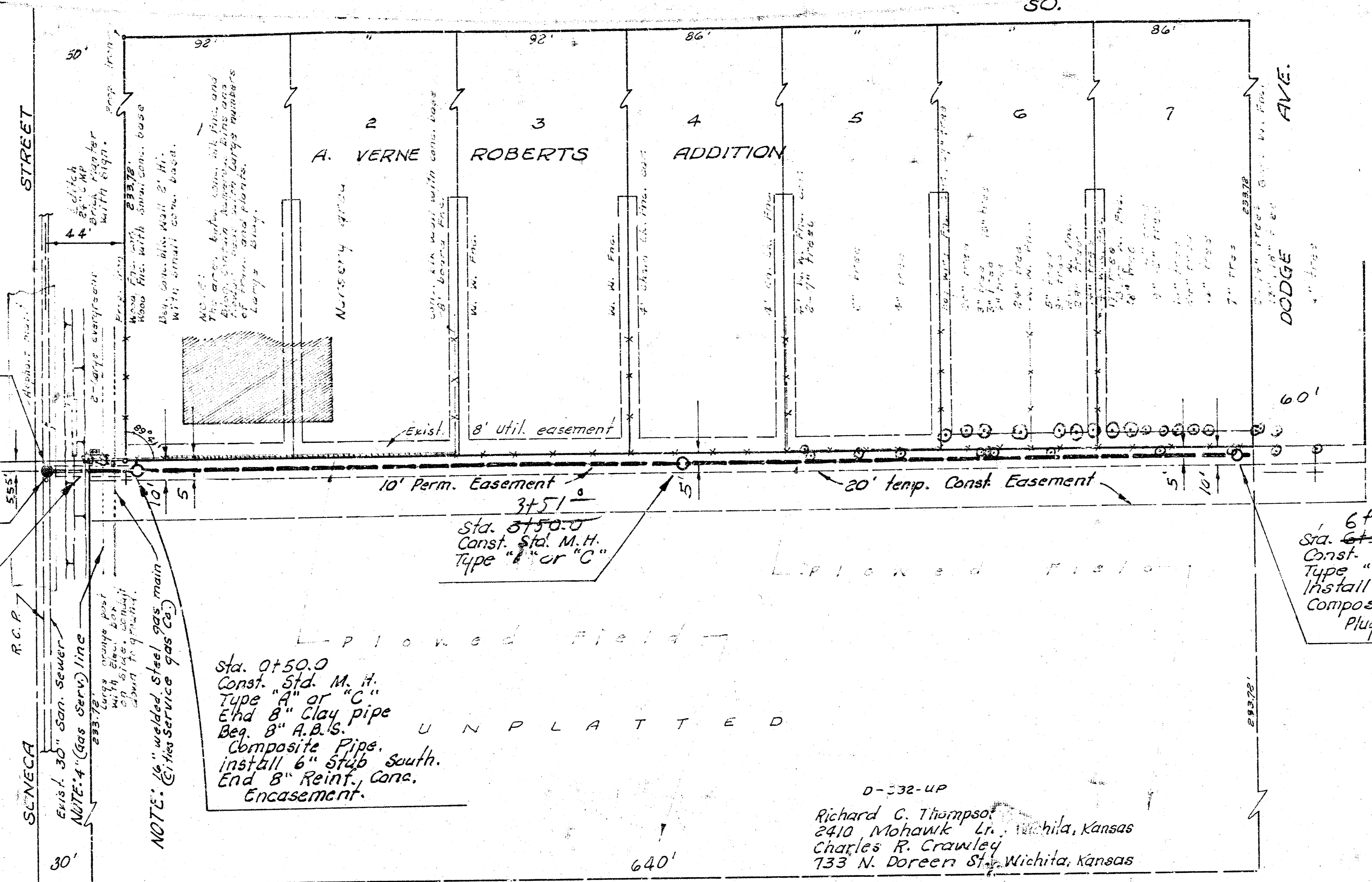


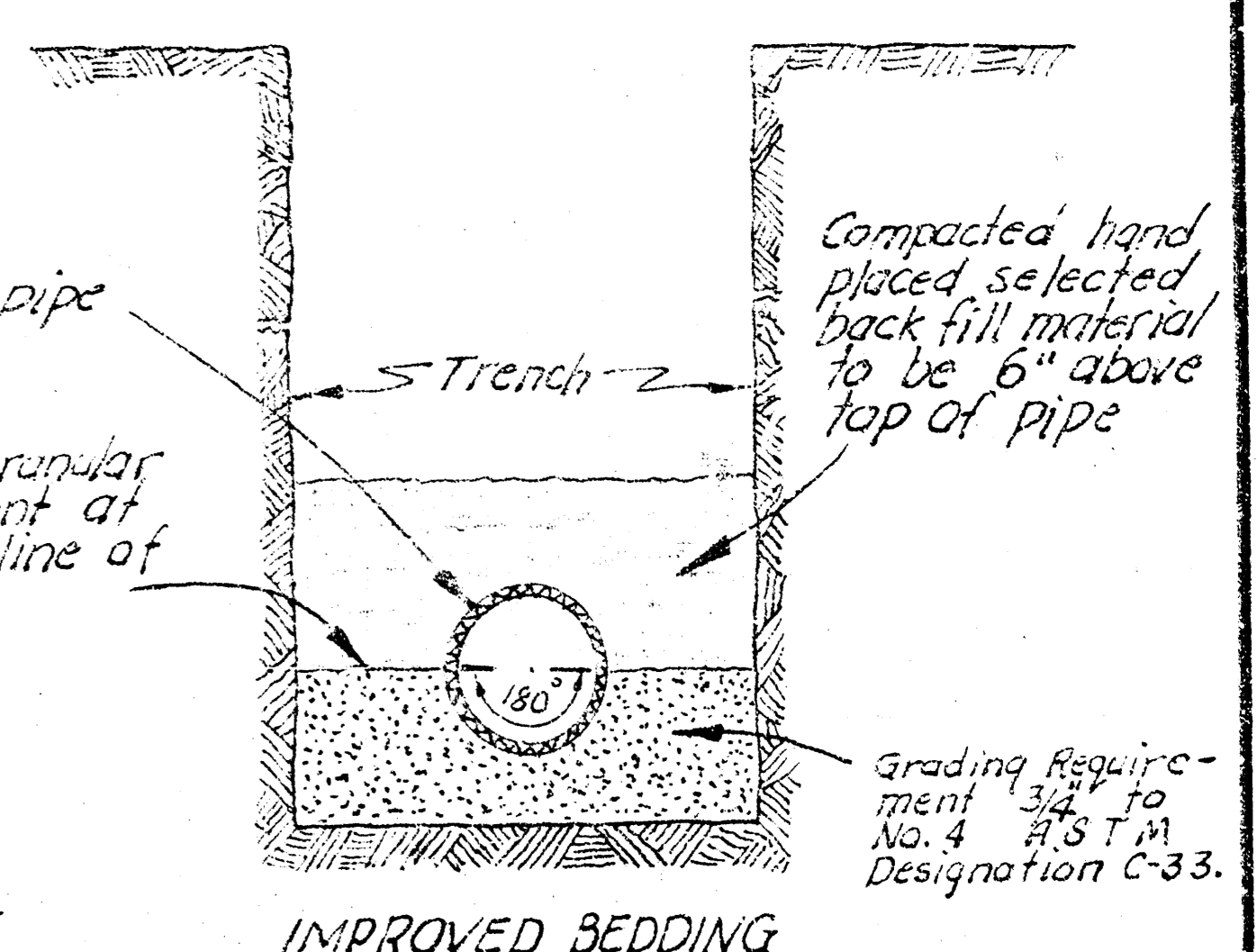
B. M. 83.38 R. R. Spike E. S.
P.P. N. W. cor. Seneca and
50th St. So.

Survey by J. L. M. B. L. No. 104
Plan by J. L. M. B. L.
Checked by

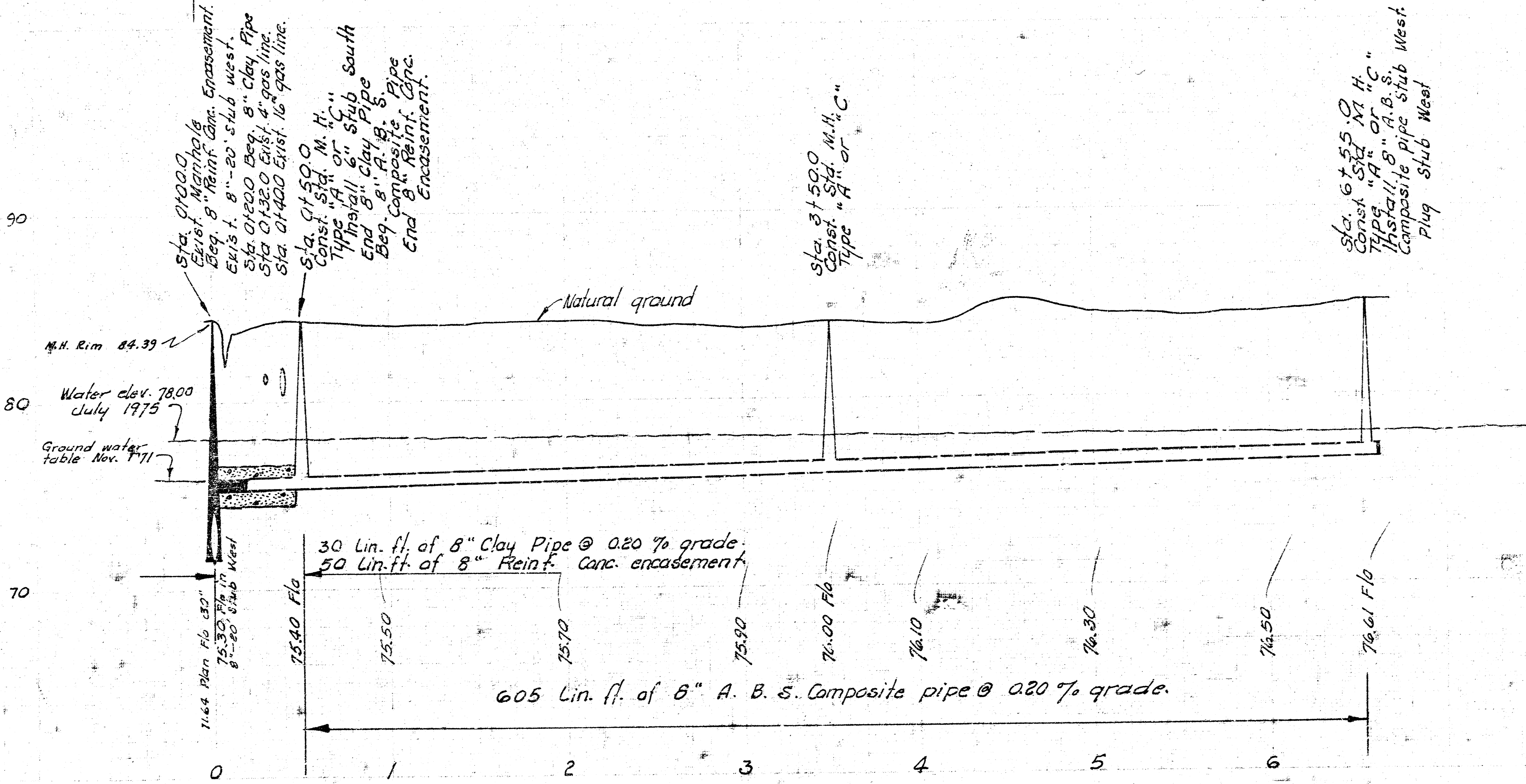
GENERAL NOTE
ACRYLONITRILE-BUTADIENE-STYRENE (A.B.S.) COMPOSITE SEWER PIPE SHALL CONFORM WITH THE LATEST REVISION OF A.S.T.M. DESIGNATION D-2680. ALL A.B.S. COMPOSITE SEWER PIPE FURNISHED FOR THIS PROJECT SHALL HAVE SOLVENT-CEMENTED JOINTS. CONTRACTOR SHALL EXERCISE CAUTION IN THE MAKING OF JOINTS SUCH THAT THE ENDS OF ALL PIPES ARE BUTTED TOGETHER. ALL A.B.S. COMPOSITE SEWER PIPE SHALL BE INSTALLED IN ACCORDANCE WITH THE MANUFACTURER'S RECOMMENDATIONS. THE A.B.S. COMPOSITE SEWER PIPE MAY BE ARMED TRUSS PIPE OR AN APPROVED EQUAL. CONTRACTOR SHALL BE REQUIRED TO TAKE PRECAUTIONS WHILE FLUSHING AND VIBRATING BACKFILL MATERIAL TO PREVENT PIPE FROM FLOATING.



Plan Scale 1" = 40'
Profile Scale 1" = 4' Vert.



IMPROVED BEDDING
Minimum depth of granular embedment below pipe shall be 1/4 of pipe diameter, but in no case less than 4 inches.
The bid price of Lin. ft. of 8" A. B. S. Composite pipe shall include the cost of granular embedment.



As Built 1-29-76
LAT. 10, MAIN 3, S. W. INTERCEPTOR SEWER
CITY OF WICHITA, KANSAS
R. W. LINN — CITY ENGINEER
197 PROJECT NO. DBKL 57 10 40

