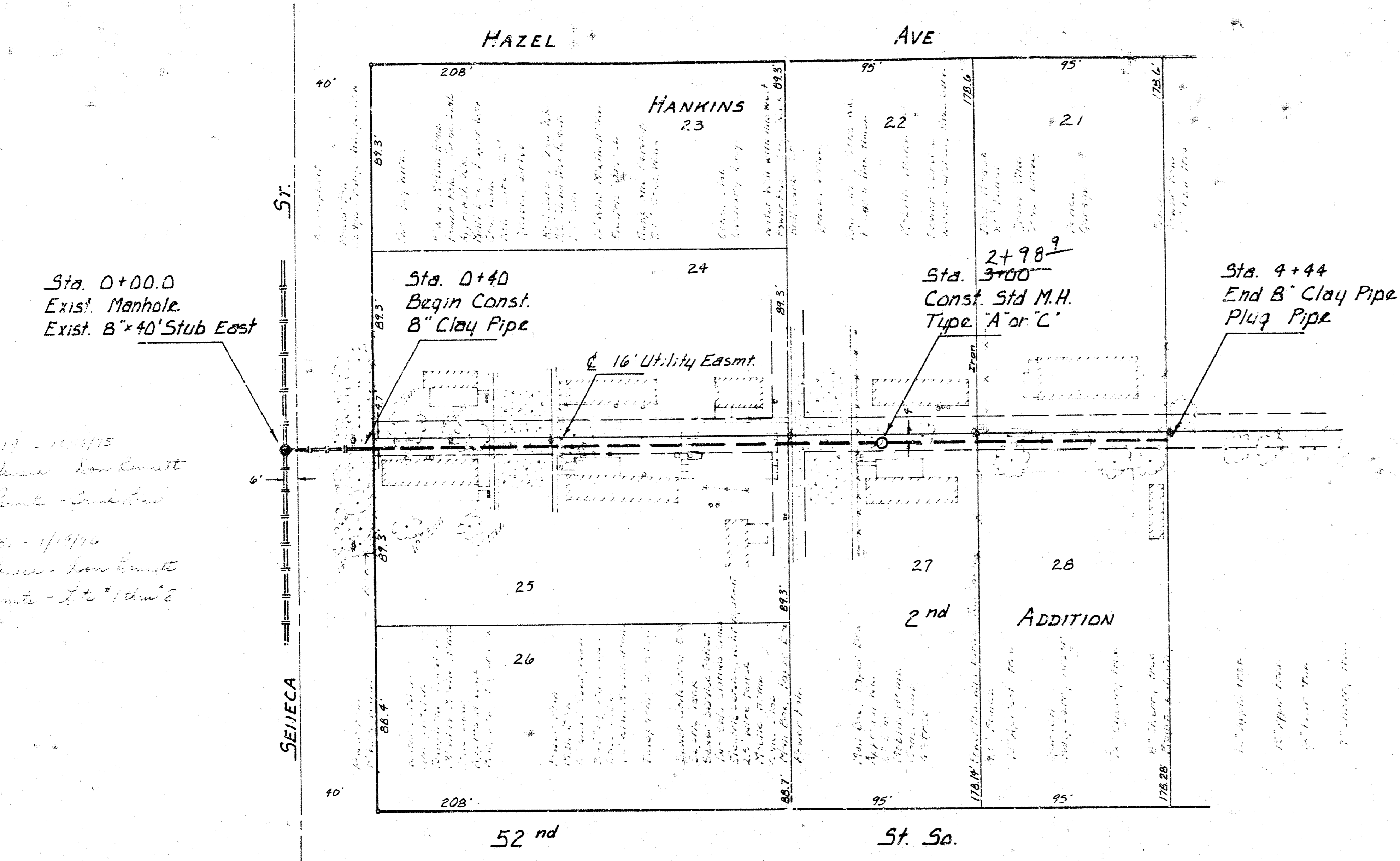


D.L.K. 220
R. Linn

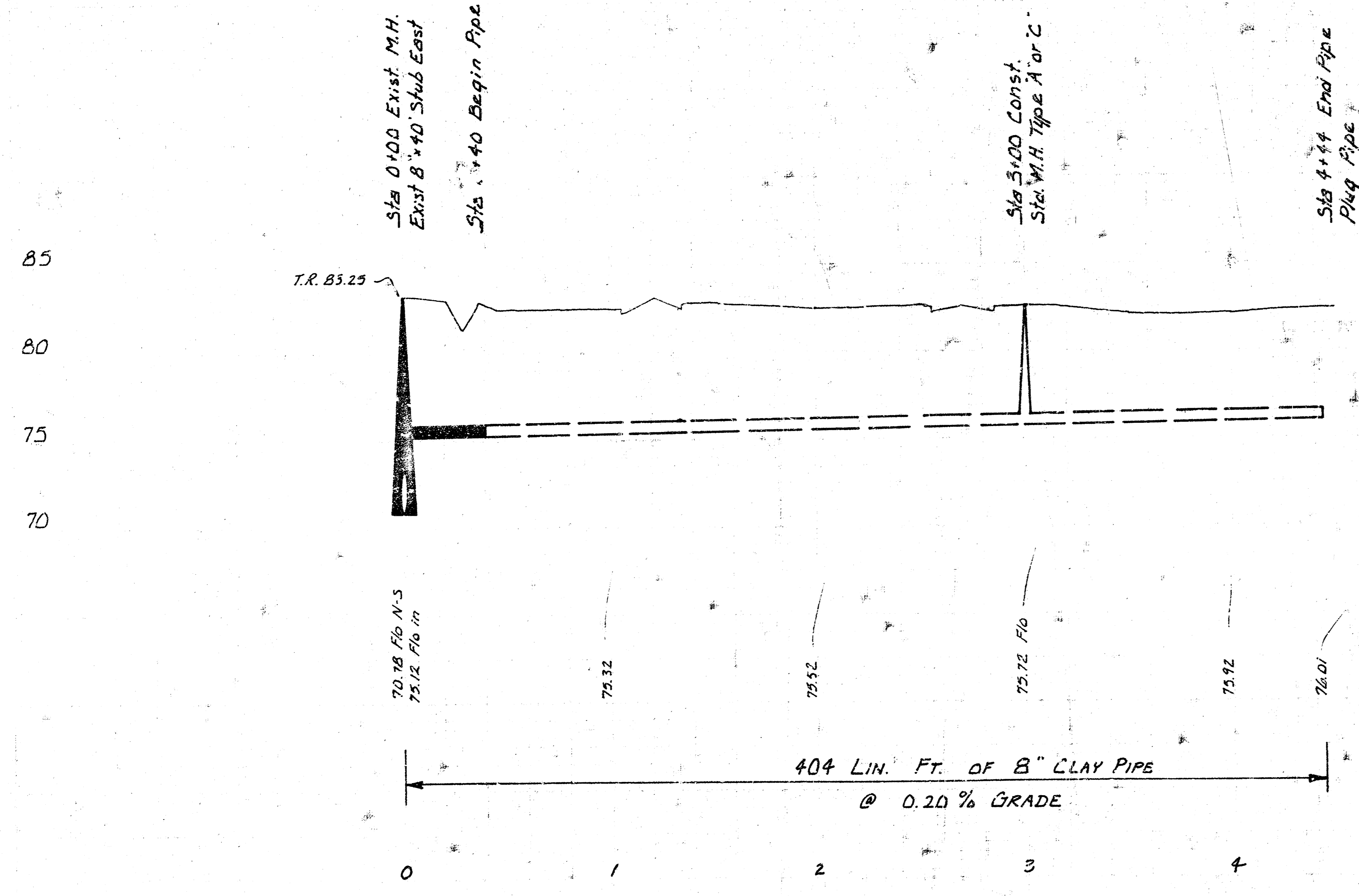
33244-17 - 10/1/75
5222 S. Seneca - low limit
Under Permit - 12' x 18" S
33244-5 - 1/1/76
5222 S. Seneca - low limit
Under Permit - 12' x 18" S



Plan Scale 1" = 40'
Profile Scale 1" = 5' Vert.

B.M. 82.97 R.R. spike E. face Power Pole
NW corner Seneca + 51st St So.
B.M. 80.72 City Std. disc 30" S and 45' E
of E. of Seneca + 55th St So.

GENERAL NOTE
PRIVATE UTILITIES MAY BE LOCATED ON UTILITY EASEMENT.
CONTRACTOR SHALL BE REQUIRED TO REMOVE PRIVATE UTILITIES
AS REQUIRED TO CONSTRUCT THE SEWER. PRIVATE UTILITIES
WILL BE REPLACED BY OWNER OF MOBILE HOME COURT.
MOBILE HOME ON SOUTH SIDE OF PROPOSED SEWER BETWEEN
STA. 0+50 and STA. 1+00 WILL BE MOVED BY THE OWNER
OF THE COURT TO FACILITATE CONSTRUCTION OF THE SEWER.
CONTRACTOR MUST CONTACT MANAGER OF MOBILE HOME COURT
AND MAKE ARRANGEMENTS FOR TEMPORARY RELOCATION OF
SAID MOBILE HOME PRIOR TO CONSTRUCTION OF THE SEWER.



As Built 1-29-76

LAT 15, MAIN 3, S.W. I.
CITY OF WICHITA, KANSAS
R. W. LINN — CITY ENGINEER
PROJECT NO. DBKL575020

