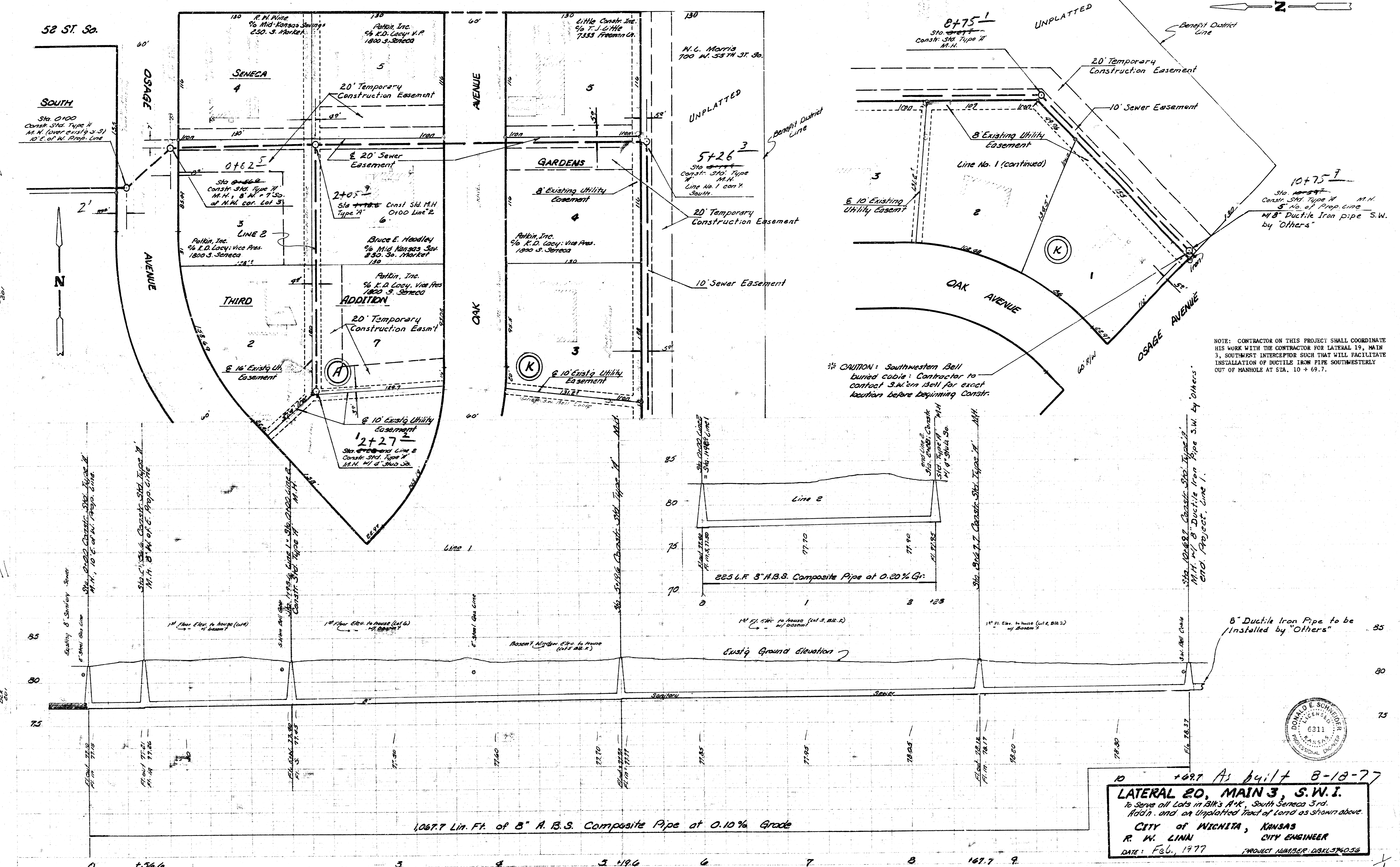


B.M. 85.4B : N.E. corner of concrete porch to House at 801 W. 52ND Street So.
 B.M. 85.50 : N.E. corner of concrete porch to House at 3319 So. Osage Avenue

SCALE:
 Plan: 1" = 40'
 Profile: vertical 1" = 5'
 horizontal 1" = 40'



NOTE: CONTRACTOR ON THIS PROJECT SHALL COORDINATE HIS WORK WITH THE CONTRACTOR FOR LATERAL 19, MAIN 3, SOUTHWEST INTERCEPTOR SUCH THAT WILL FACILITATE INSTALLATION OF DUCTILE IRON PIPE SOUTHWESTERLY OUT OF MANHOLE AT STA. 10 + 69.7.

CAUTION: Southwestern Bell buried cable: Contractor to contact S.W. Bell for exact location before beginning Constr.

8" Ductile Iron Pipe to be installed by Others



1067.7 Lin. Ft. of 8" A.B.S. Composite Pipe at 0.10% Grade

1097 As built 8-18-77

LATERAL 20, MAIN 3, S.W.I.
 To Serve all Lots in Blk's A-K, South Seneca 3rd Addn. and an Unplatted Tract of Land as shown above.

CITY OF WICHITA, KANSAS
 R. W. LINN CITY ENGINEER
 DATE: Feb., 1977 PROJECT NUMBER: DSKL374058

14 10 3 15