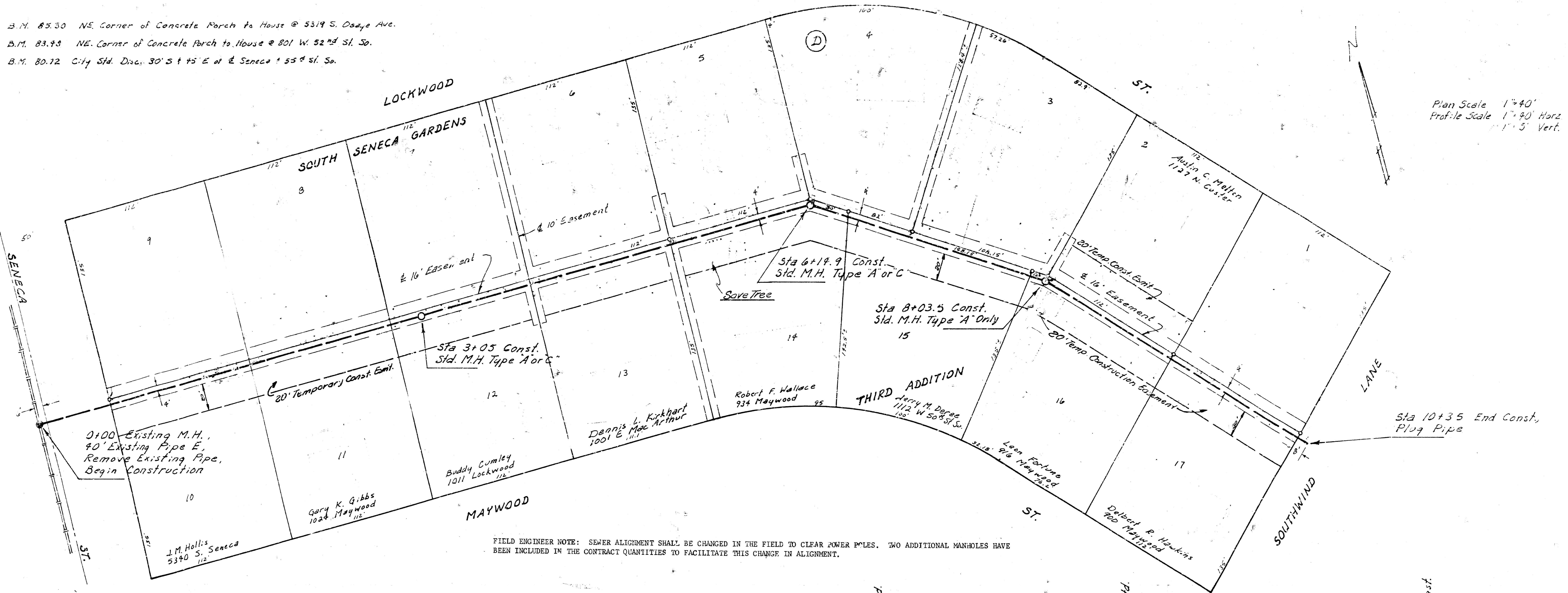


B.M. 83.30 NE Corner of Concrete Porch to House @ 5319 S. Osage Ave.
 B.M. 83.93 NE Corner of Concrete Porch to House @ 801 W. 52nd St. So.
 B.M. 80.12 City Std. Disc. 30' S + 15' E of S Seneca + 55' S St. So.



FIELD ENGINEER NOTE: SEWER ALIGNMENT SHALL BE CHANGED IN THE FIELD TO CLEAR POWER POLES. TWO ADDITIONAL MANHOLES HAVE BEEN INCLUDED IN THE CONTRACT QUANTITIES TO FACILITATE THIS CHANGE IN ALIGNMENT.

NOTE: CONTRACTOR WILL BE REQUIRED TO GIVE PROTECTIVE WORKING EFFECTED BY THE CONSTRUCTION OF THIS SEWER A MINIMUM OF 24 HOURS ADVANCE NOTICE PRIOR TO START OF CONSTRUCTION. THE FOLLOWING CONDITIONS WERE MADE AS A RESULT OF RIGHT-OF-WAY ACQUISITION AND SHALL BE ADHERED TO BY THE CONTRACTOR AS FOLLOWS:
 LOT 12, BLOCK D - WOOD SHED ON SKIDS TO BE MOVED OFF THE TEMPORARY EASEMENT IS OWNED.
 LOT 13, BLOCK D - FENCE WHICH IS REMOVED SHALL BE REPLACED.
 LOT 14, BLOCK D - FENCE WHICH IS REMOVED SHALL BE REPLACED.
 LOT 15, BLOCK D - FENCE WHICH IS REMOVED SHALL BE REPLACED.
 LOT 16, BLOCK D - FENCE WHICH IS REMOVED SHALL BE REPLACED.

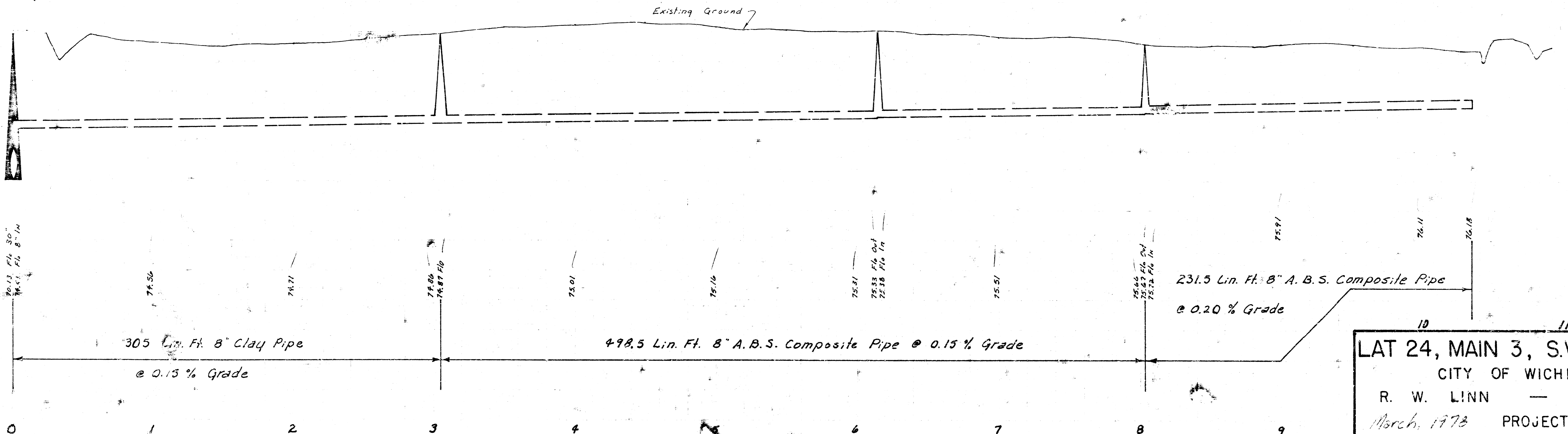
Sta 0+00 Existing M.H., 40' Existing Pipe E, Remove Existing Pipe, Begin Construction.

Sta 3+05 Const. Std. M.H. Type A or C.

Sta 6+19.9 Const. Std. M.H. Type A or C.

Sta 8+03.5 Const. Std. M.H. Type A Only.

Sta 10+35 End Const. Plug Pipe.



LAT 24, MAIN 3, S.W. INTERCEPTOR
 CITY OF WICHITA, KANSAS
 R. W. LINN — CITY ENGINEER
 March, 1978 PROJECT NO. DBKL577049