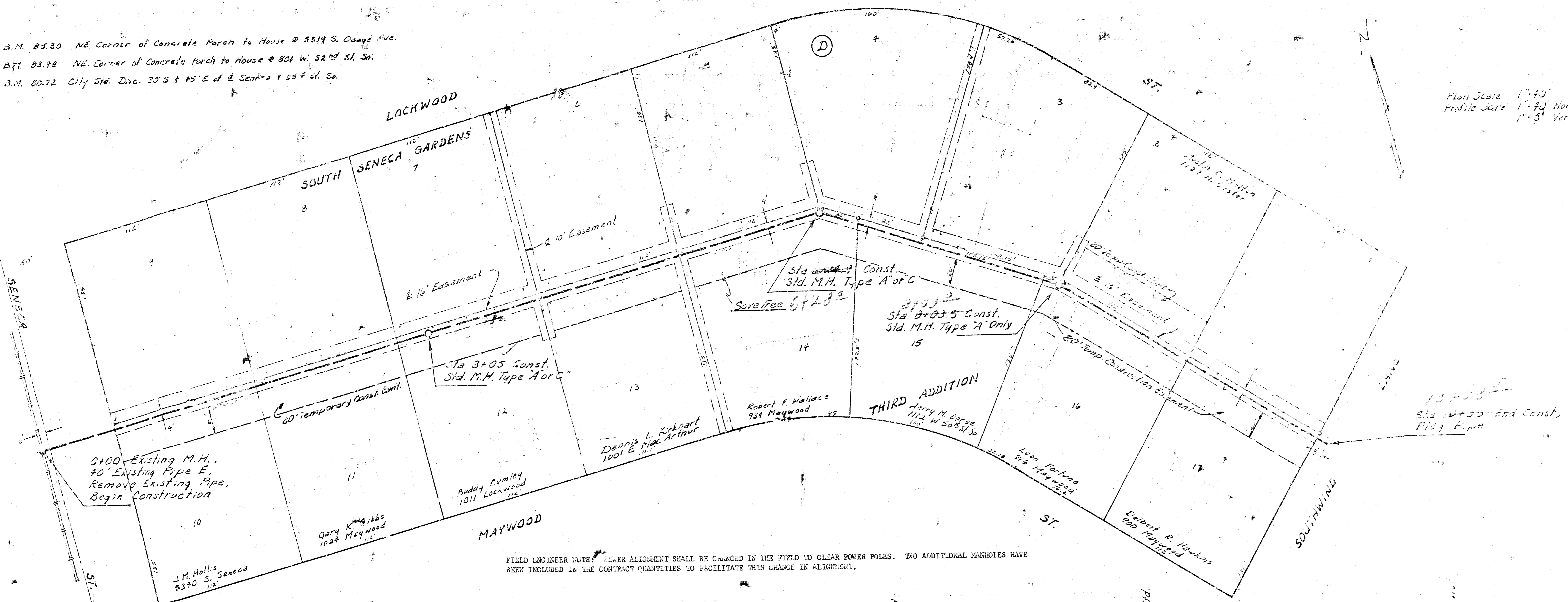


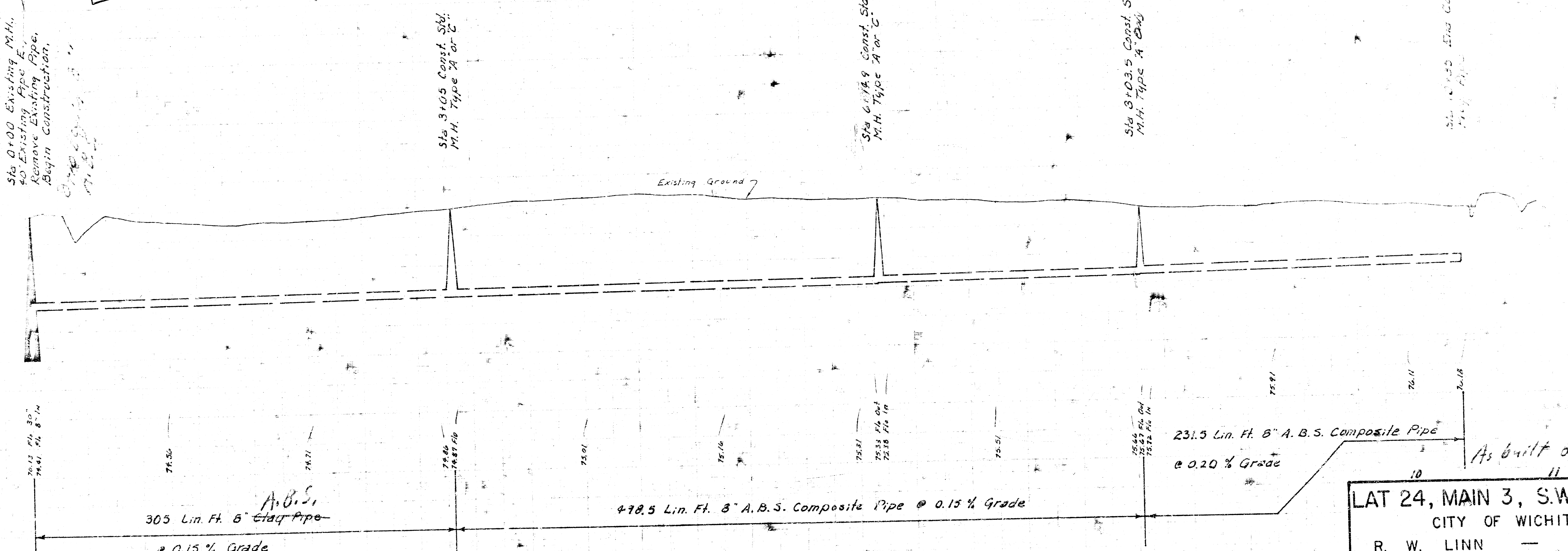
B.M. 85.30 NE Corner of Concrete Porch to House @ 5819 S. Osage Ave.
 B.M. 83.98 NE Corner of Concrete Porch to House @ 801 W. 52nd St. So.
 B.M. 80.72 City Sid. Disc. 30' S + 45' E of E. Seneca + 55' S. So.



Plan Scale 1"=40'
 Profile Scale 1"=40' Horiz.
 1"=5' Vert.

FIELD ENGINEER NOTE: SEWER ALIGNMENT SHALL BE CHANGED IN THE FIELD TO CLEAR POWER POLES. TWO ADDITIONAL MANHOLES HAVE BEEN INCLUDED IN THE CONTRACT QUANTITIES TO FACILITATE THIS CHANGE IN ALIGNMENT.

NOTE: CONTRACTOR WILL BE REQUIRED TO OBTAIN NECESSARY PERMITS FROM THE CITY ENGINEER PRIOR TO THE COMMENCEMENT OF THIS WORK. A RECORD OF THIS WORK SHALL BE MAINTAINED THROUGHOUT THE PROJECT. THE CONTRACTOR SHALL BE RESPONSIBLE FOR OBTAINING ALL NECESSARY PERMITS AND FOR THE COST THEREOF. THE CONTRACTOR SHALL BE RESPONSIBLE FOR THE PROTECTION OF ALL UTILITIES AND STRUCTURES TO REMAIN. THE CONTRACTOR SHALL BE RESPONSIBLE FOR THE PROTECTION OF ALL ADJACENT PROPERTIES AND FOR THE COST THEREOF. THE CONTRACTOR SHALL BE RESPONSIBLE FOR THE PROTECTION OF ALL ADJACENT PROPERTIES AND FOR THE COST THEREOF.



LAT 24, MAIN 3, S.W. INTERCEPTOR
 CITY OF WICHITA, KANSAS
 R. W. LINN — CITY ENGINEER
 March, 1973 PROJECT NO. DBKL577049

