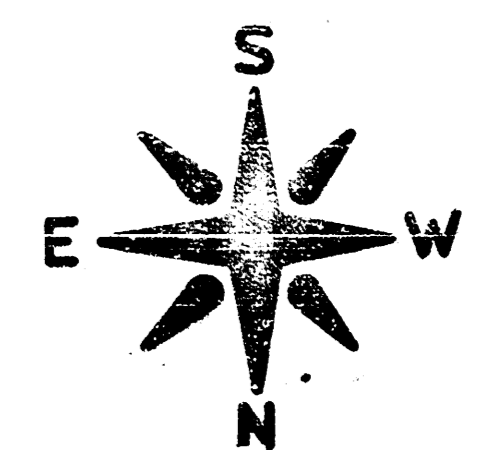


S.M. 87.34 CITY STD., 74' N of 44' E of E Both 47th St. S. of SENECA
 S.M. 86.60 SE Cor. CONC. PAVEN. SLAB, YELLOW No. WS SENECA of SOUTH
 of 48th St. S.

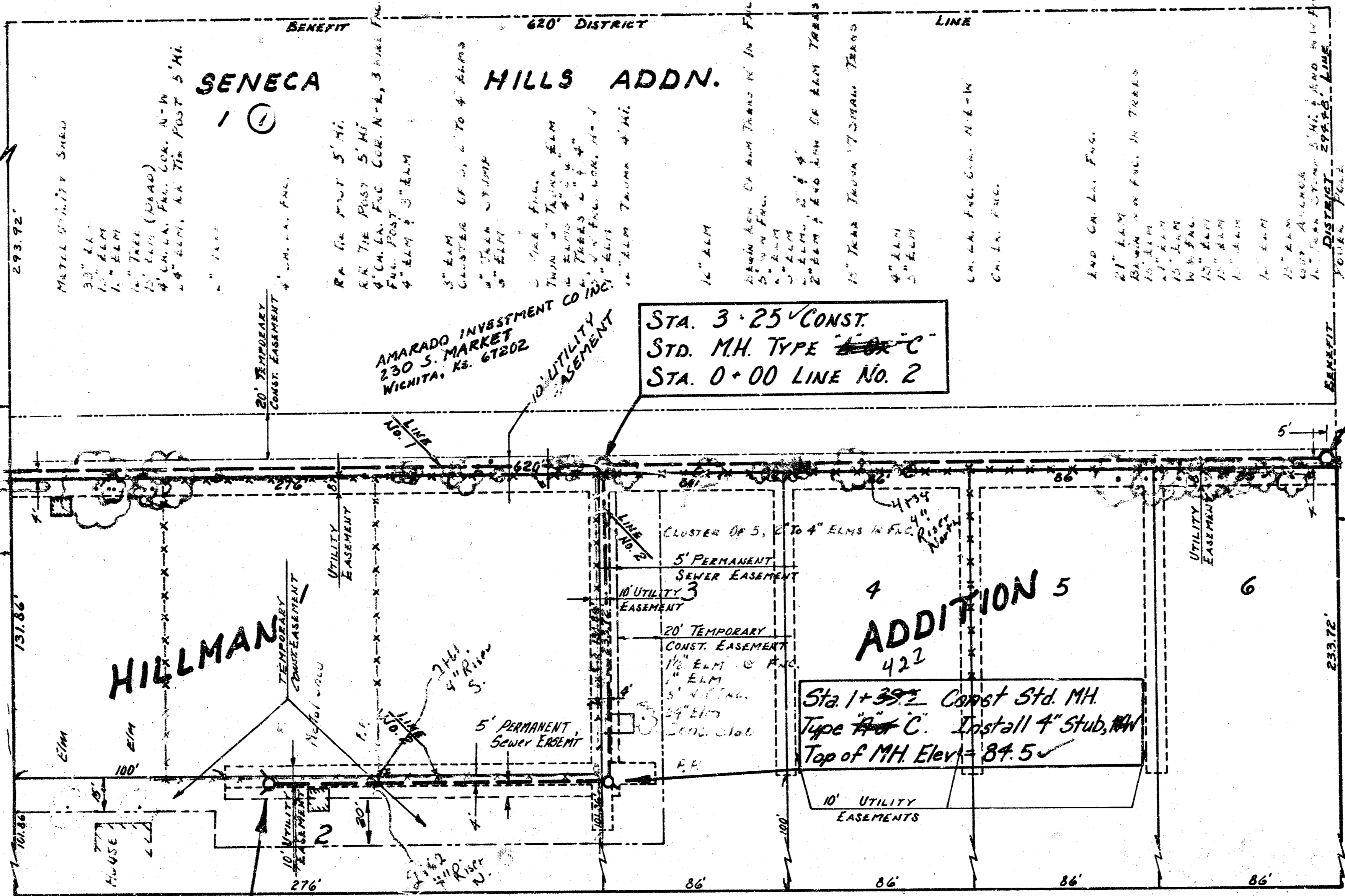
As Built
 9.53



PLAN
 PULASKI
 E. KOWALL
 REVISED
 J. LINDSEY
 1983

THE CONTRACTOR SHALL BE RESPONSIBLE FOR PRESERVING PROPERTY IRONS. THE CONTRACTOR SHALL BE REQUIRED TO RE-ESTABLISH ANY PROPERTY IRONS WHICH ARE DAMAGED OR DESTROYED BY HIS CONSTRUCTION OPERATIONS. SUCH IRONS SHALL BE RE-ESTABLISHED BY A LICENSED LAND SURVEYOR OR A LICENSED PROFESSIONAL ENGINEER IN ACCORDANCE WITH STATE LAWS.

CAUTION
 UNDERGROUND
 UTILITIES



STA. 6+00 CONST.
 STD. MH. TYPE "A" OR "C"
 8" STUB WEST

STA. 3+25 CONST.
 STD. MH. TYPE "C"
 STA. 0+00 LINE NO. 2

Sta 0+00 Existing MH
 Remove Existing Stub &
 Encasement & Plug MH.

Sta 1+39.2 Const Std. MH
 Type "C" Install 4" Stub, MH
 Top of MH Elev = 84.5

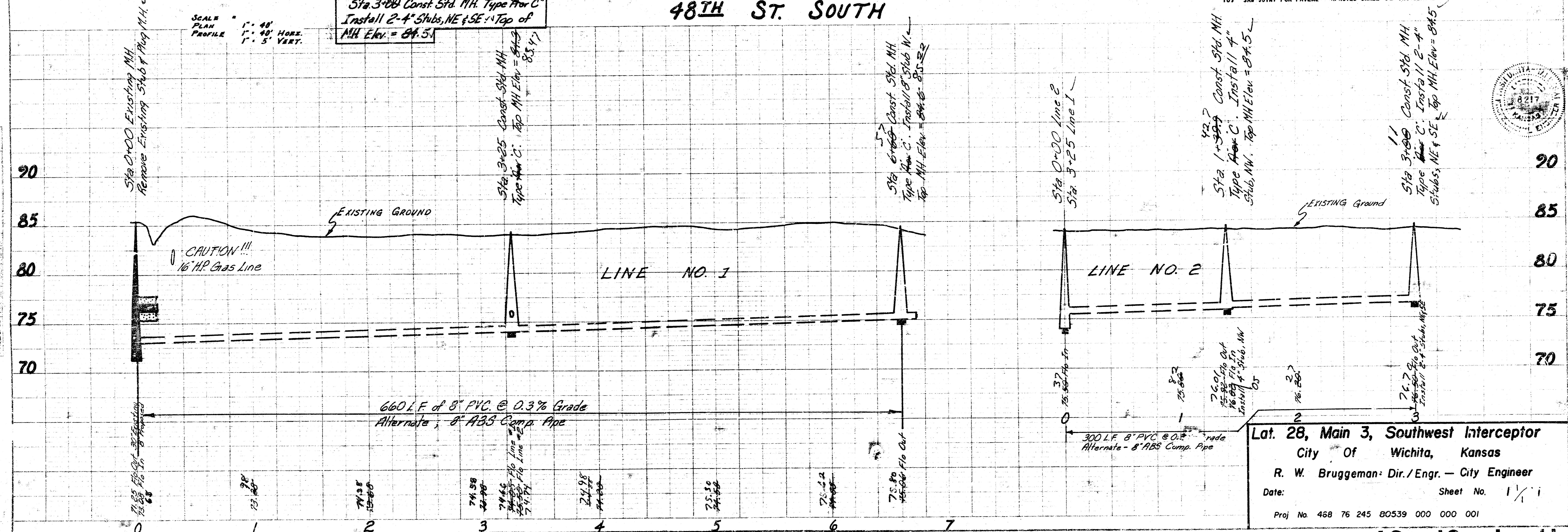
Sta. 3+00 Const. Std. MH. Type "A" or "C"
 Install 2-4" Stubs, NE & SE Top of
 MH Elev = 84.5

48TH ST. SOUTH

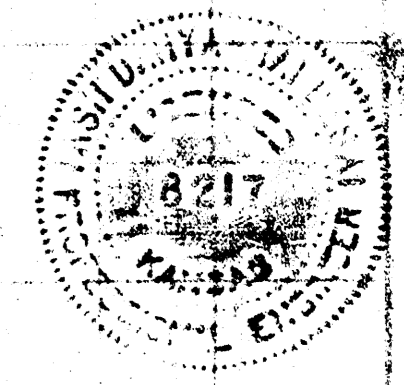
SCALE
 PLAN 1" = 40'
 PROFILE 1" = 40' HORIZ.
 1" = 5' VERT.

Sta. 1+39.2 Const. Std. MH
 Type "C" Install 4" Stub, NW
 Top of MH Elev = 84.5

Sta. 3+00 Const. Std. MH
 Type "C" Install 2-4" Stubs, NE & SE
 Top of MH Elev = 84.5



PROFILE
 PULASKI
 E. KOWALL
 REVISED
 J. LINDSEY
 1983



Lat. 28, Main 3, Southwest Interceptor
 City of Wichita, Kansas
 R. W. Bruggeman: Dir. / Engr. - City Engineer
 Date: _____ Sheet No. 1/1
 Proj No. 468 76 245 80539 000 000 001

19 10 1 15