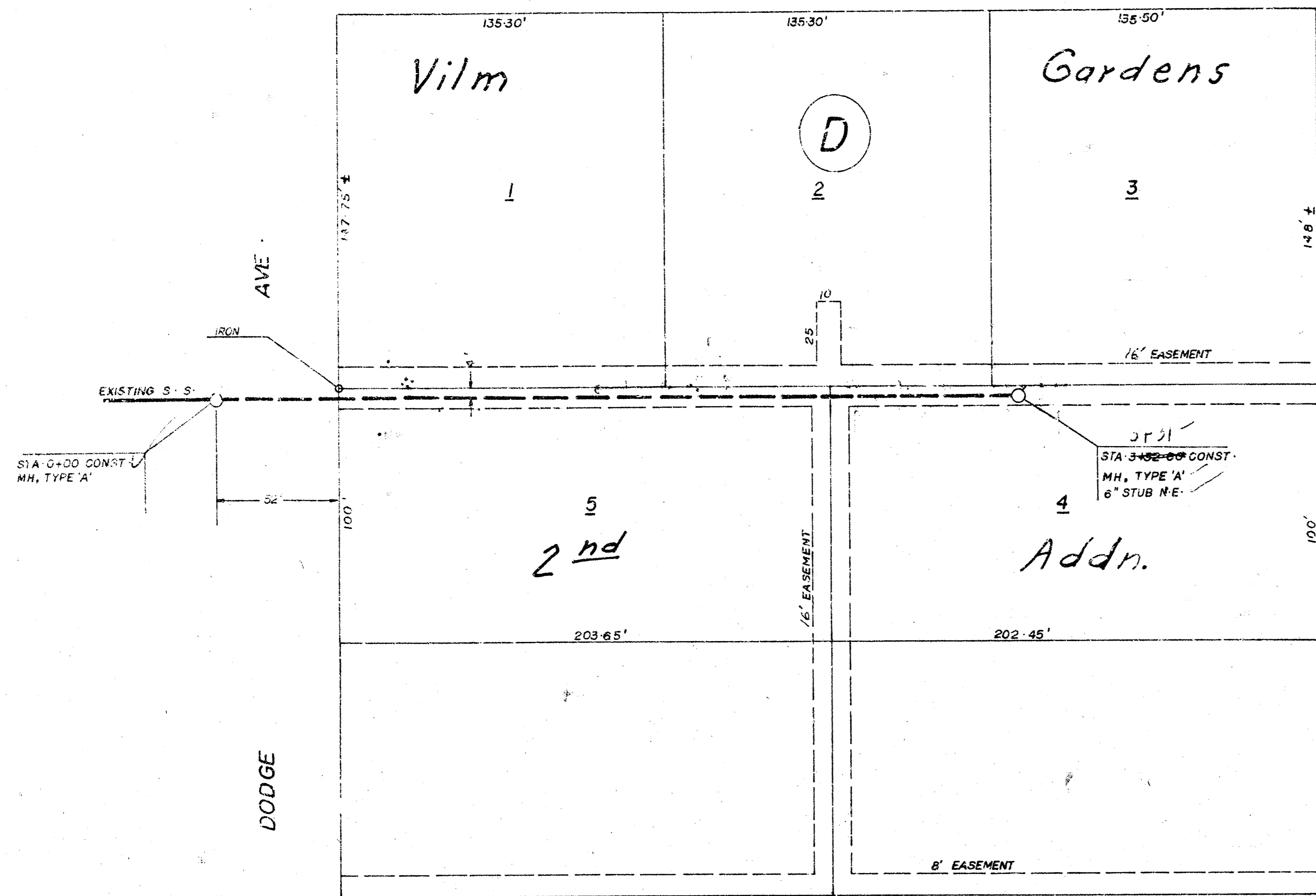


43 RD SOUTH

VILM GARDENS SECOND ADDITION

VILM GARDENS SECOND ADDITION



NOTE: CONTRACTOR SHALL GIVE PROPERTY OWNERS AND/OR TENANTS AFFECTED BY THE CONSTRUCTION OF THIS PROJECT A MINIMUM ADVANCED NOTICE OF 24 HOURS PRIOR TO STARTING CONSTRUCTION.

NOTES

- 1- FIELD ENGINEER TO TAKE TIES TO ALL IRONS THAT MAYBE DISTURBED DURING CONSTRUCTION AND REPLACE ANY THAT ARE DESTROYED.
- 2- CONTRACTOR TO CONTACT UTILITY COMPANIES FOR LOCATION OF ANY UNDERGROUND LINES.
- 3- FIELD ENGINEER TO SET TOP OF MANHOLES TO FINISH GRADE AS DETERMINED BY DEVELOPER.
- 4- FIELD ENGINEER SHOULD DECIDE FOR REMOVING TREES IF IS NECESSARY.

NOTE

Benefit District Are Lots 1 Through 5

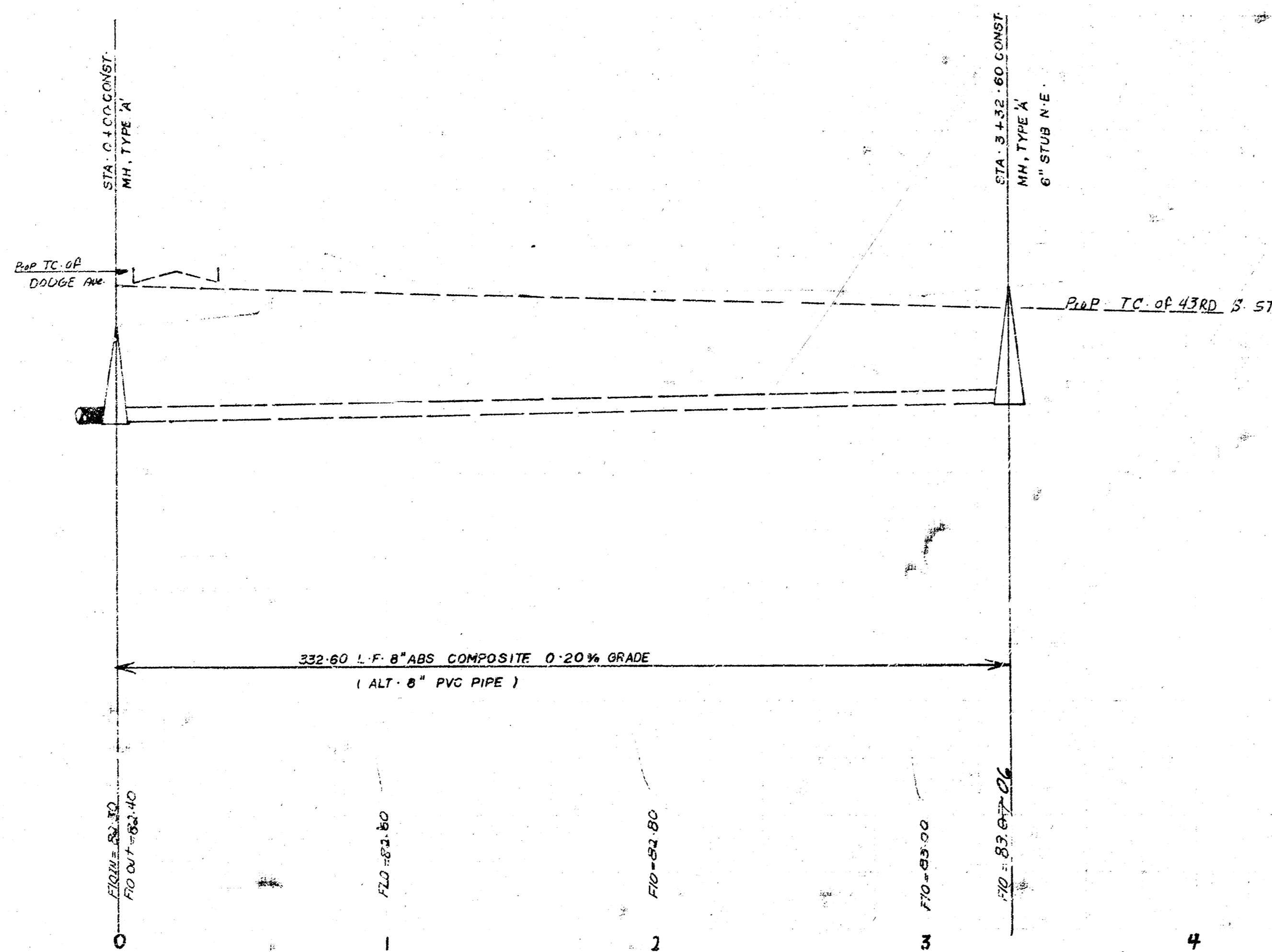


SCALE

PLAN	1" = 40'
Profile HORT.	1" = 40'
VERT.	1" = 5'

B.M = 88.01 City Std Disc 48' E of 42.80' S of C  
Seneca & 43RD ST. S.

90  
85  
80



*As Built  
JSL  
4/81*

LAT-30, Main 3 SWI  
468-76-245-80745-004-000-001  
City of Wichita, Kansas  
Dept. of Public Works—Engineering DIV.  
Dean Sellers Acting City Engineer  
DATE

FILMED FROM THE BEST