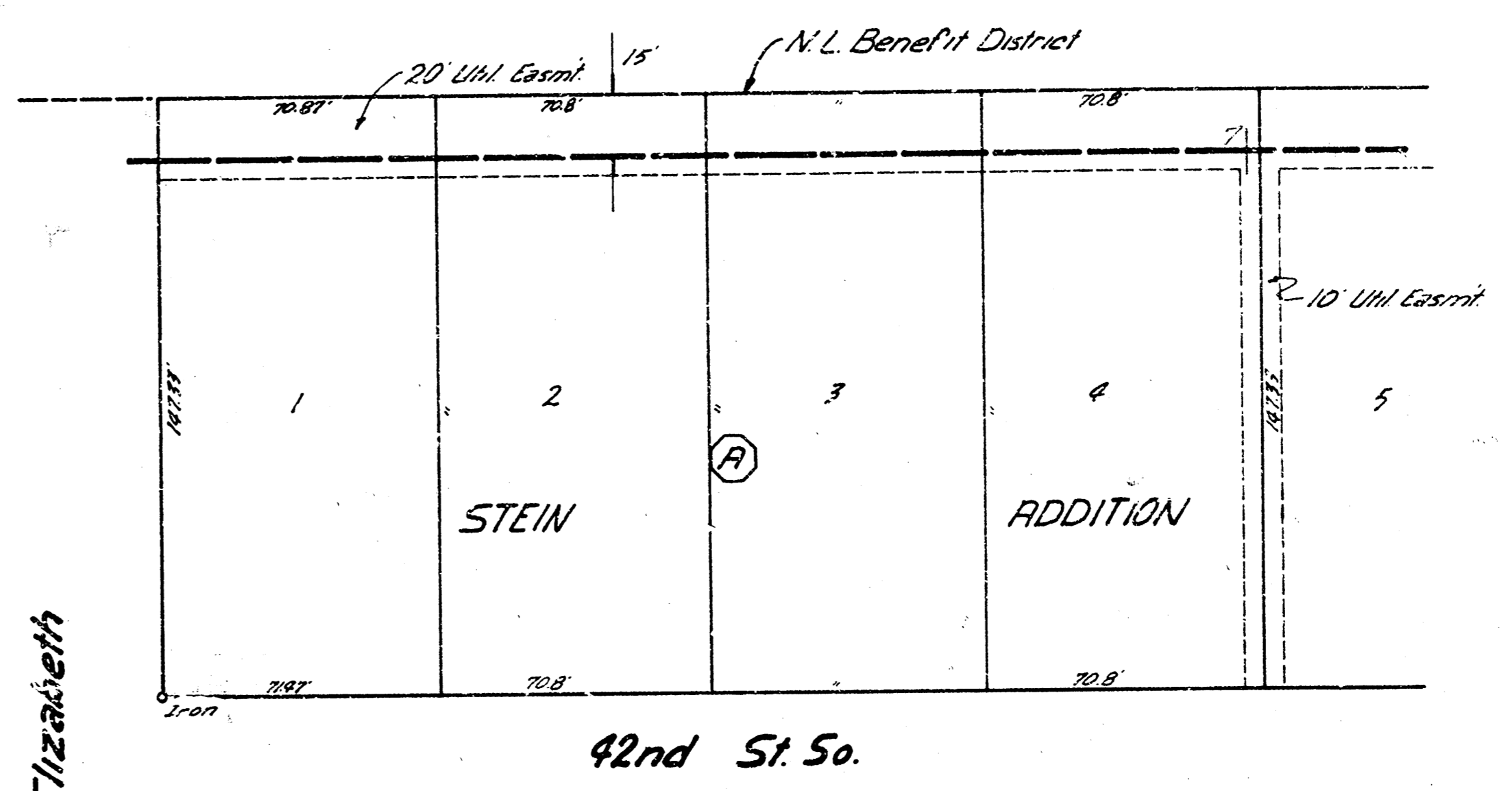
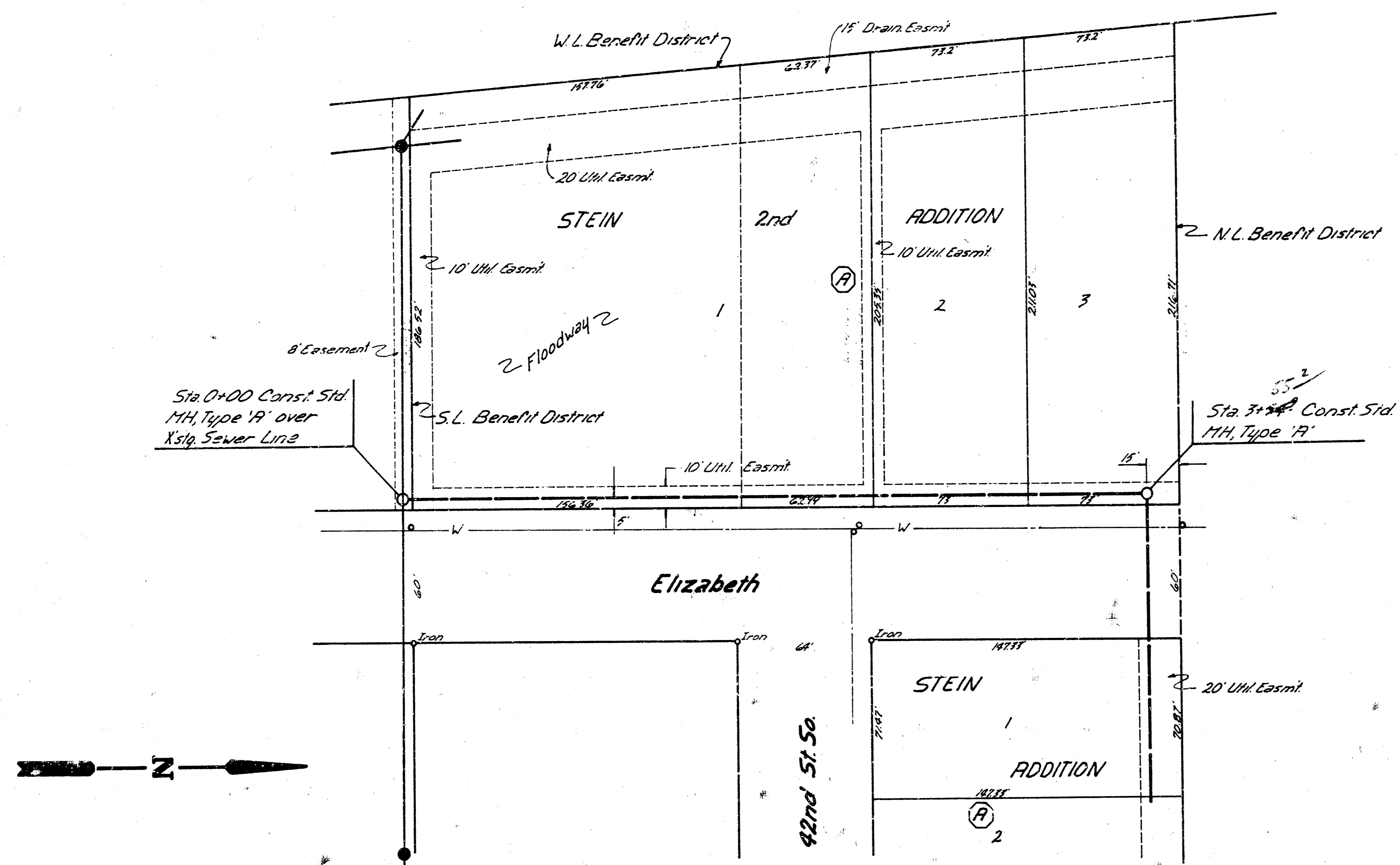


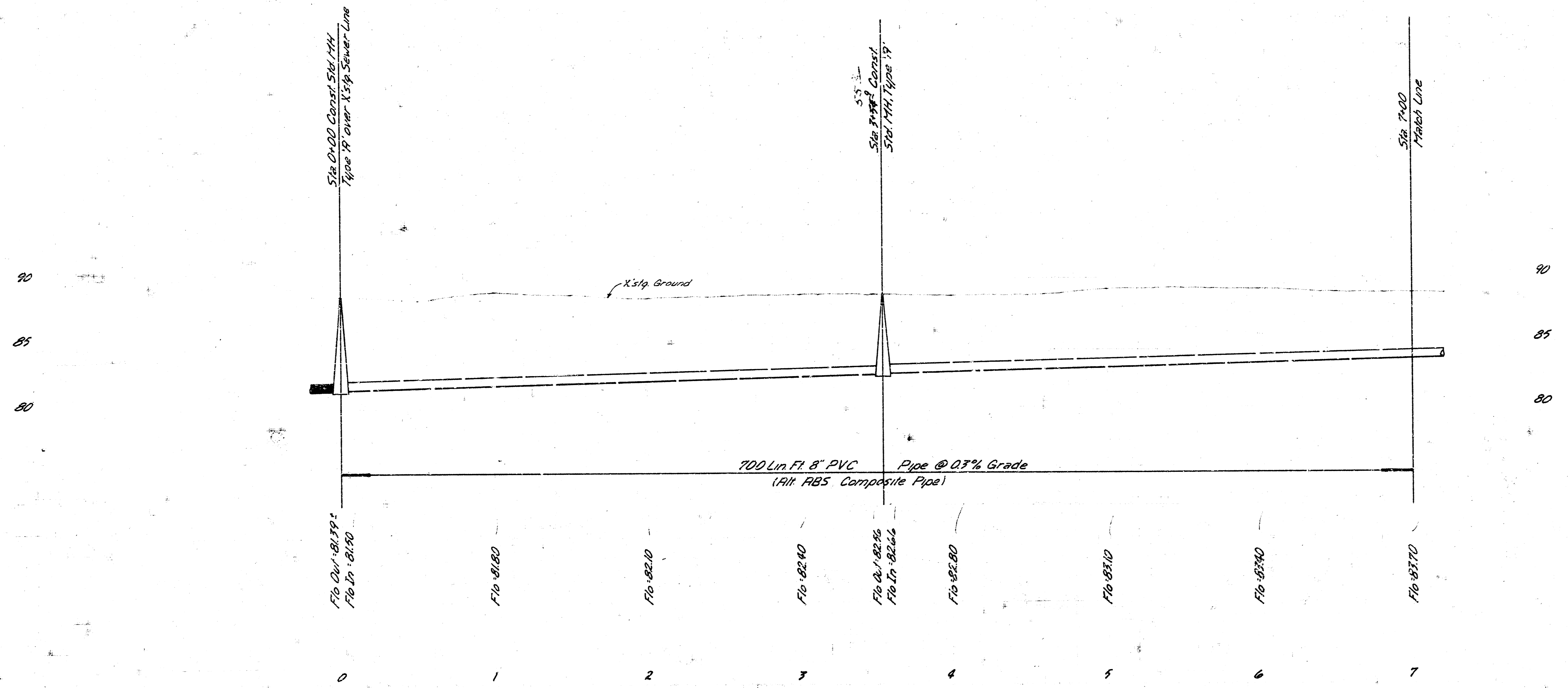
NOTE: FIELD ENGINEER SHALL SET TOPS OF MANHOLES TO MATCH PROPOSED FINISH GRADE AS DETERMINED BY THE FIELD ENGINEER. RISERS AND ADDITIONAL STUBS SHALL BE INSTALLED ON THIS PROJECT TO SERVE ADJACENT LOTS WHEN DEMAND BY THE FIELD ENGINEER. RISER CONSTRUCTION SHALL CONFORM TO THE REQUIREMENTS AS SHOWN ON STANDARD SPECIFICATIONS. JOINTS OF THE ENDS OF THE RISERS SHALL BE MADE BY FASTENING GREEN PLASTIC COLORED TAPE TO THE END OF THE RISER AND SECURE TO THE GROUND SURFACE AS THE EXCAVATION IS BACKFILLED SO THAT THE COLORED TAPE WILL BE VISIBLE AFTER THE PROJECT IS COMPLETED. ALL RISERS SHALL BE CONSTRUCTED USING S.D.R. 23.5 A.B.S. OR P.V.C. PIPE.



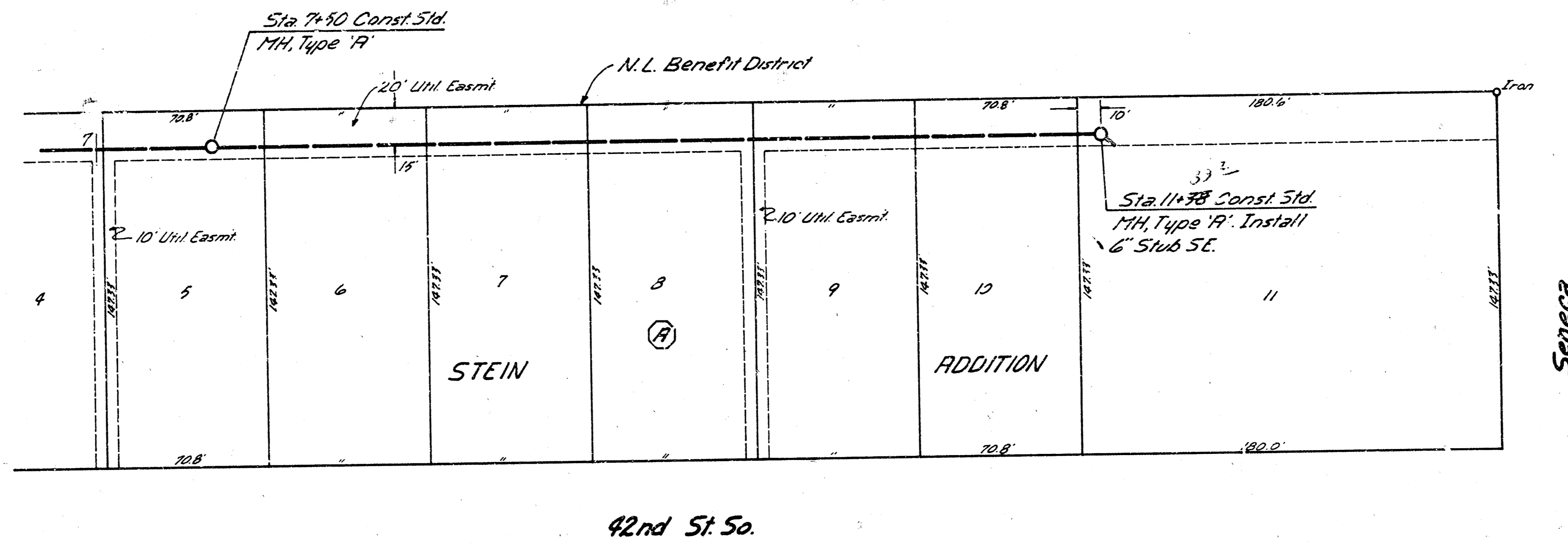
SCALE  
 Hor: 1"=40'  
 Vert: 1"=5'

B.M. 91.07 '11' W Face Conc. Walk Approx. 23 FT  
 E. of N.E. Cor. Bldg. 11 Southgate Village  
 B.M. 90.05 '11' SW Cor. Conc. Walk, SW Cor. Neal's  
 Burger Bar.

General Notes  
 1. Field Engineer to Set Top of Manholes to  
 Finish Grade as Determined by the Developer  
 2. Field Engineer to Uncover Existing Pipes & Verify  
 Elevation Before Beg. Construction.



Lat. 31, Main 3, SWI  
 668-76-245-80823-000 400-001  
 City of Wichita, Kansas  
 Dept. of Public - Eng. Div.  
 Dawn S. Sellers - Acting City Engineer



SCALE  
 Horz 1"=40'  
 Vert 1"=5'

