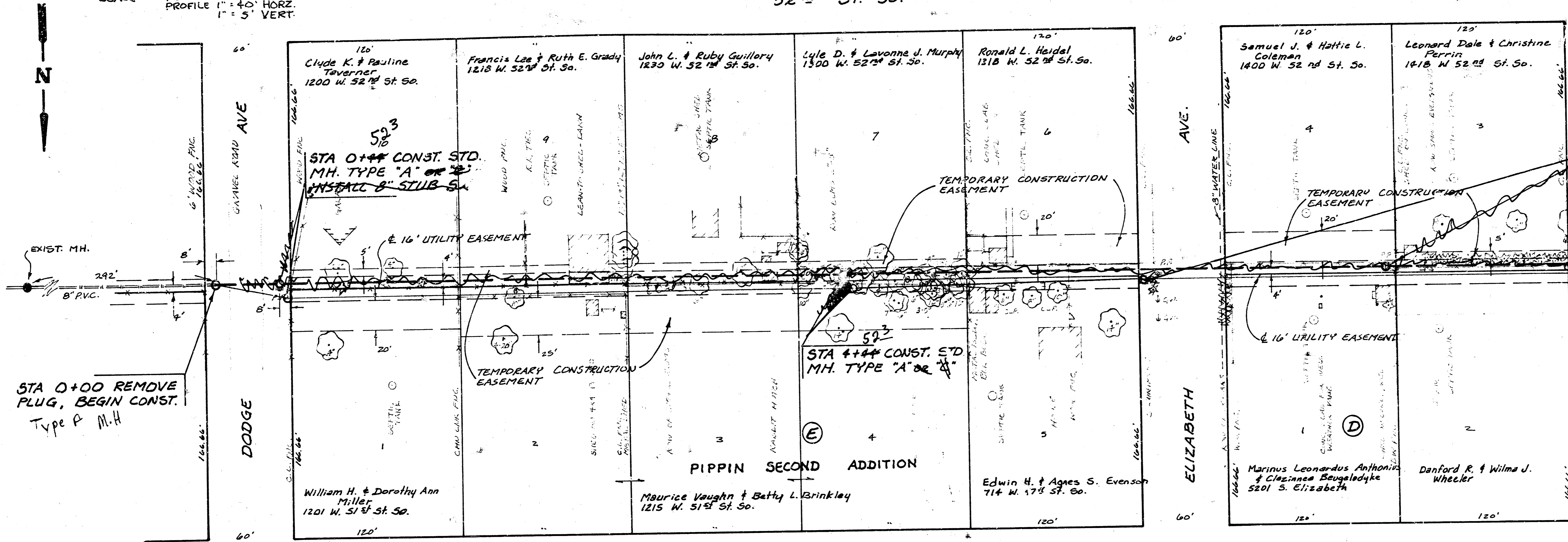


THE CONTRACTOR SHALL BE RESPONSIBLE FOR PRESERVING PROPERTY IRONS. THE CONTRACTOR SHALL BE REQUIRED TO RE-ESTABLISH ANY PROPERTY IRONS WHICH ARE DAMAGED OR DESTROYED BY HIS CONSTRUCTION OPERATIONS. SUCH IRONS SHALL BE RE-ESTABLISHED BY A LICENSED LAND SURVEYOR OR A LICENSED PROFESSIONAL ENGINEER IN ACCORDANCE WITH STATE LAWS.

SCALE PLAN 1" = 40' PROFILE 1" = 5' VERT.

52ND ST. 50.



6+58²
STA 6+58 CONST. STD. MH. TYPE "A" OR "E"

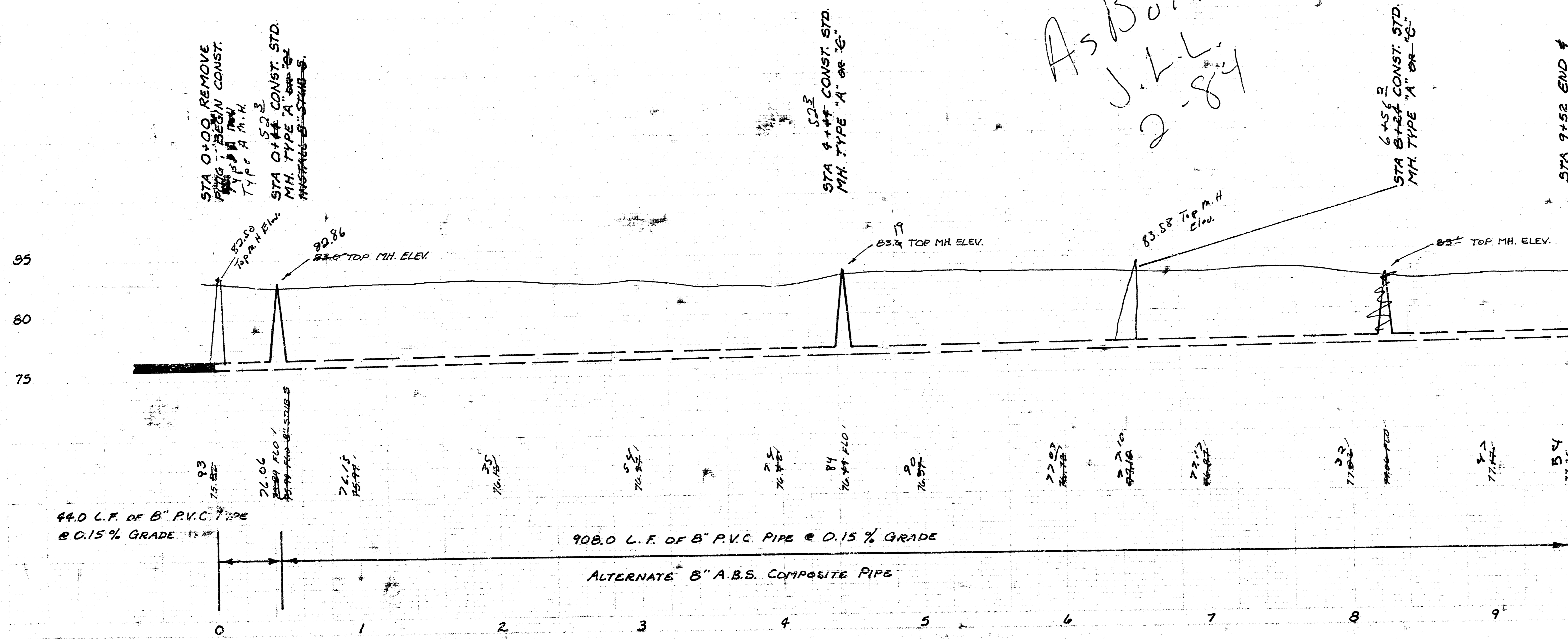
STA 9+52 END # PLUG PIPE

NOTE: The Contractor shall be required to install tight sheeting where the sewer construction is in the proximity of buildings to protect the buildings from damage. The cost shall be incidental to the project.

B.M. 83.08 R.R. SPIKE E. FACE P.P. NW. CORNER 52ND ST. 50. AND DODGE.
B.M. 82.72 CITY STD. DISC. 30' S. + 45' E. OF E. BOTH SENEGA AND 55TH ST. 50.
B.M. 83.31 R.R. SPIKE E. FACE P.P. NW CORNER 52ND ST. 50. AND SENEGA

51ST ST. 50.

As Built
J.L.L.
2-84



PROJECT DESCRIPTION	
LAT. 40, MAIN 3, SW. INTERCEPTOR	
PROJECT NUMBER	
468-76-245-81303-000-000-001	
BOOK NO. DCD-278	APPROVED BY
DRAWN BY LODM/S	DATE
CITY OF WICHITA DEPARTMENT OF ENGINEERING	
M. E. LINDEBAK - CITY ENGINEER	SCALE

10 1 3 0