

SHEET NO.	TOTAL SHEETS
1	3

CONSTRUCTION PLANS FOR LATERAL 48, MAIN 3 SOUTHWEST INTERCEPTOR SEWER

IN

THE CITY OF WICHITA SEDGWICK CO. KANSAS

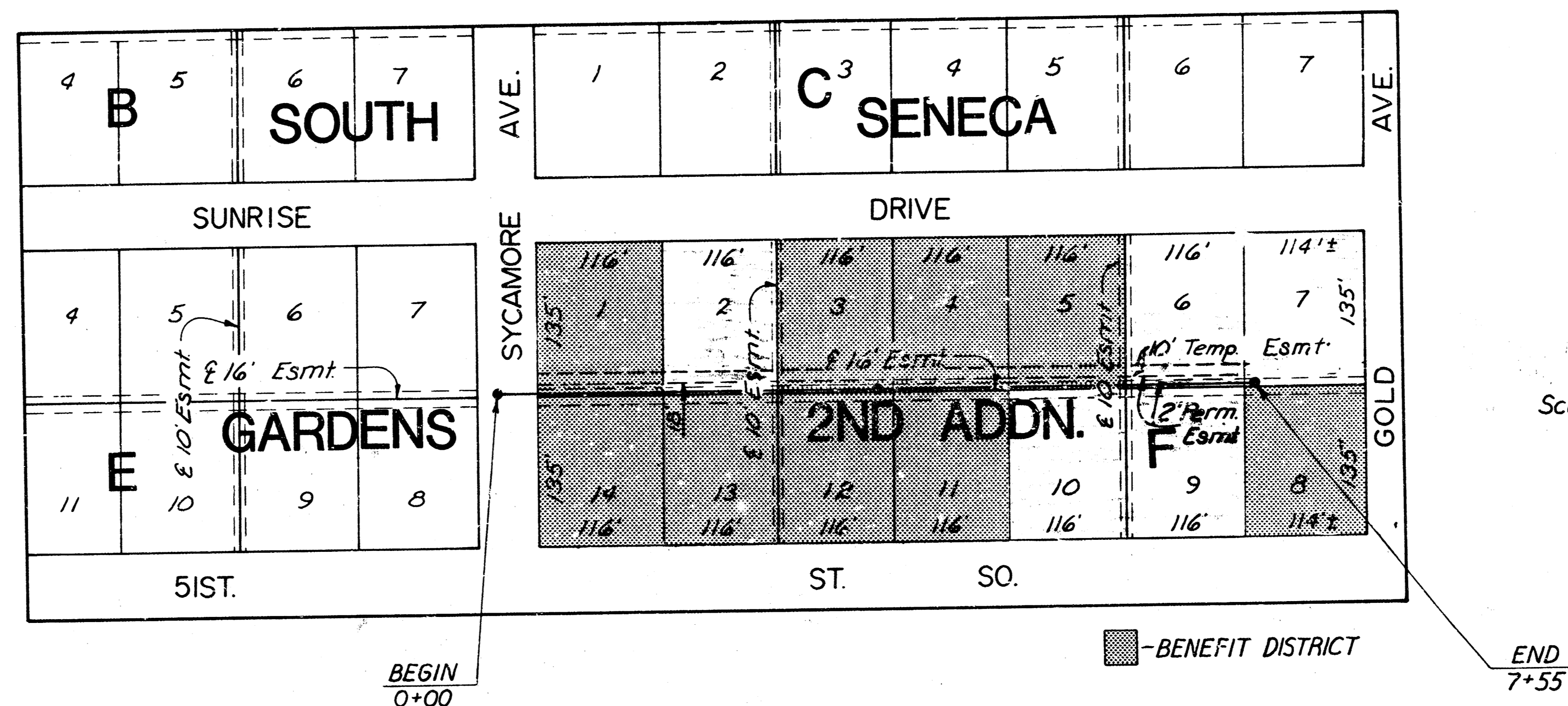
MICHAEL E. LINDEBAK, P. E. - CITY ENGINEER

GENERAL NOTES

1. All construction and materials shall comply with City of Wichita Specifications and Standards.
2. All elevations shown are City of Wichita Datum (USGS - 1187.4 - CITY DATUM).
3. All grassed areas disturbed by the Contractor shall be *restored in* accordance with the City of Wichita Standard Specifications and in accordance with the City of Wichita Administrative Regulation AR78.
4. Rubble from the removal of miscellaneous structures and excess excavation which is to be wasted shall be disposed of on sites to be provided by the Contractor. These sites shall be approved by the Engineer as to suitability, appearance and site location. Locations that, in the opinion of the Engineer, will leave an unsightly appearance will not be approved.
5. The Contractor shall be responsible for preserving property irons. The Contractor will be required to re-establish any property irons which are damaged or destroyed by his construction operations. Such irons shall be re-established by a licensed land surveyor in accordance with state laws.
6. Trees and shrubs in public right-of-way which are in direct conflict with proposed new construction shall be removed by the Contractor with the Engineer's approval. Trees and shrubs which are not in direct conflict with proposed new construction shall be saved and protected from damage. Cost of tree removal shall be subsidiary to project.
7. Construction of Standard Manholes shall conform to City of Wichita Standards for Type P, Type C, or Type D manholes. The City of Wichita Standard Manhole Cover shall be used at all manhole locations. These standards are available at the City Engineers office and will be provided upon request.
8. The Contractor shall provide positive drainage away from all manhole covers.
9. The Contractor shall give all property owners and/or tenants of developed property abutting the construction of this project a minimum of ten (10) days advance notice prior to start of construction.
10. Underground utility service lines and overhead utility pole lines are to be adjusted as necessary by others prior to construction unless the plans specifically call for their adjustment by the Contractor or unless the plans specifically identify a utility to be adjusted by its owner during construction. Existing utilities and their location, as shown on the plans, represent the best information obtainable for design. The Contractor will be required to work around existing utilities within the right-of-way which do not conflict with proposed construction.
11. The Contractor shall notify pipeline companies at least 24 hours in advance of any work being performed across and/or adjacent to pipelines.
12. The Contractor shall remove Chain Link, Woven Wire, or Wood Fences as needed for construction and shall reconstruct and or replace Fences in like kind at same locations upon completion of construction. Fence costs shall be subsidiary to the project.

INDEX OF SHEETS

1. TITLE SHEET
2. PLAN/PROFILE
3. PLAT OF SOUTH SENECA GARDENS 2ND ADDITION



INDEX CODE 740498

CITY OF WICHITA PROJECT NO. 468 76 245 82059 000 000 001

MAY 1990

PLANS PREPARED BY

MID-CONTINENT ENGINEERS

WICHITA, KANSAS



*AS BUILT
RPI 1-91*

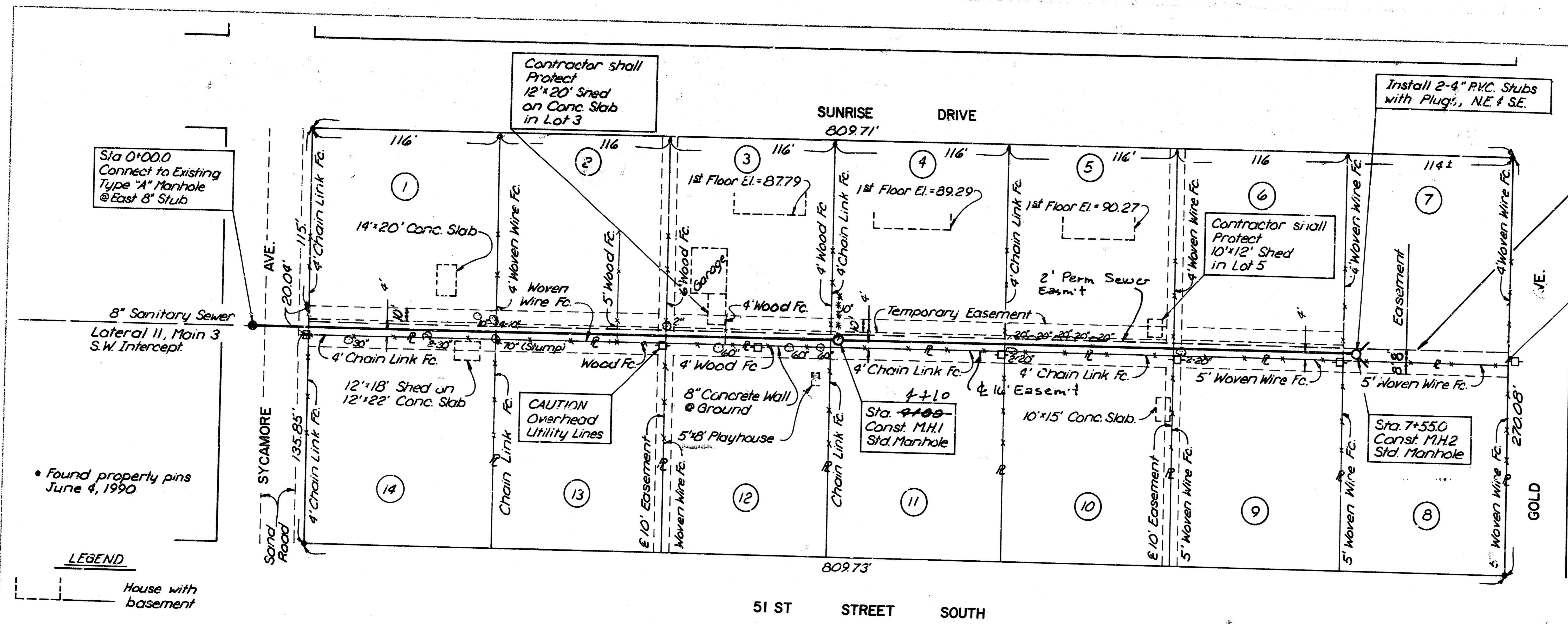
MID CONTINENT ENGINEERS	WICHITA KANSAS	DESIGNED <i>MJM</i> SCALE 1"=100'
		DETAILED <i>DJR</i> DATE 5-23-90

FILMED FROM THE BEST
AVAILABLE COPY

DATE	5-30-90
DESIGNED BY	MLM
CHECKED BY	DLR
IN CHARGE	DLR
PROJECT NO.	90-80
SHEET NO.	2
TOTAL SHEETS	3

DATE	5-30-90
DESIGNED BY	MLM
CHECKED BY	DLR
IN CHARGE	DLR
PROJECT NO.	90-80
SHEET NO.	2
TOTAL SHEETS	3

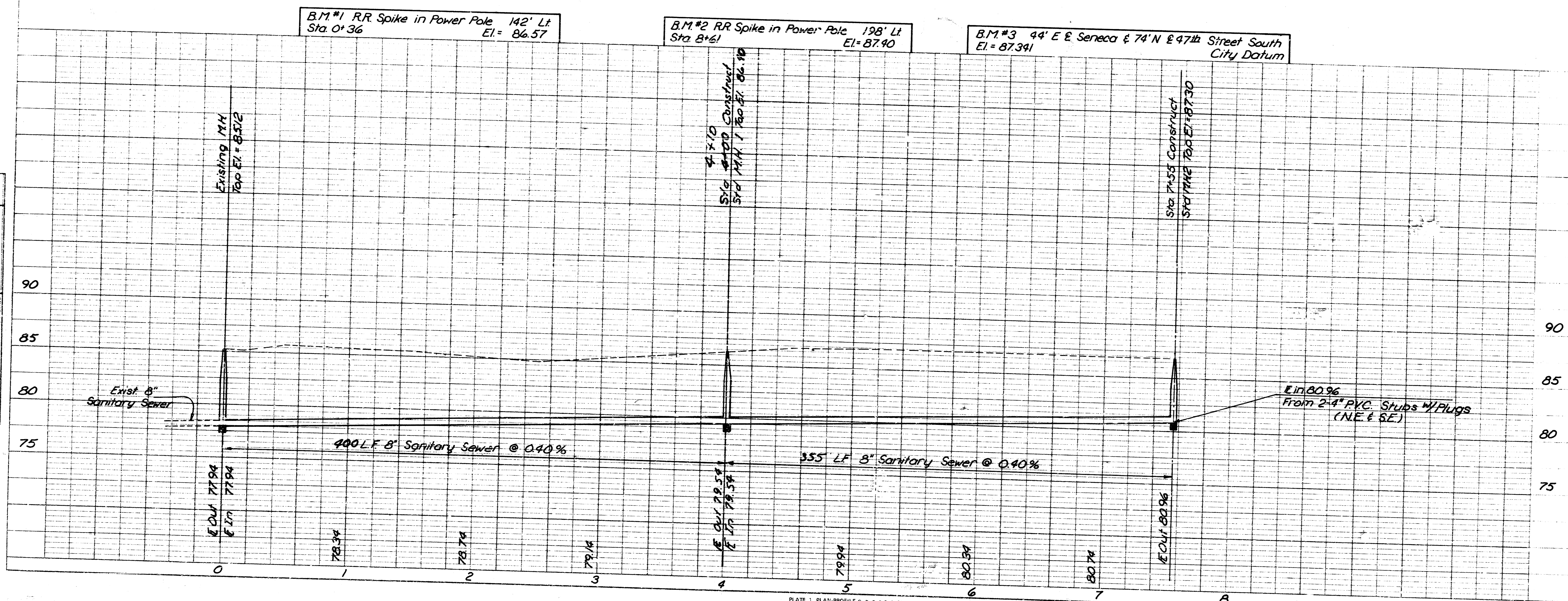
SHEET NO.	2
TOTAL SHEETS	3



Note: Contractor shall restrict construction operations to the existing 8' Easement. No temporary construction easement could be obtained on Lot 7.

P.O.T. Sta. 8+60.98
 1. 1/2" Rebar @ Sta. 5.70' SE.
 2. Tack & Washer in Power Pole 46.28' NE.
 3. Spike & Washer in 90° Elm 3.78' S.
 4. 2" Galv. Fence Corner Post

PLAN: Lat & Long
 PROFILE: Horiz. same as above
 Vert.



LATERAL 48, MAIN 3
 SOUTHWEST INTERCEPTOR SEWER

PLAN / PROFILE

MID CONTINENT ENGINEERS
 WICHITA KANSAS

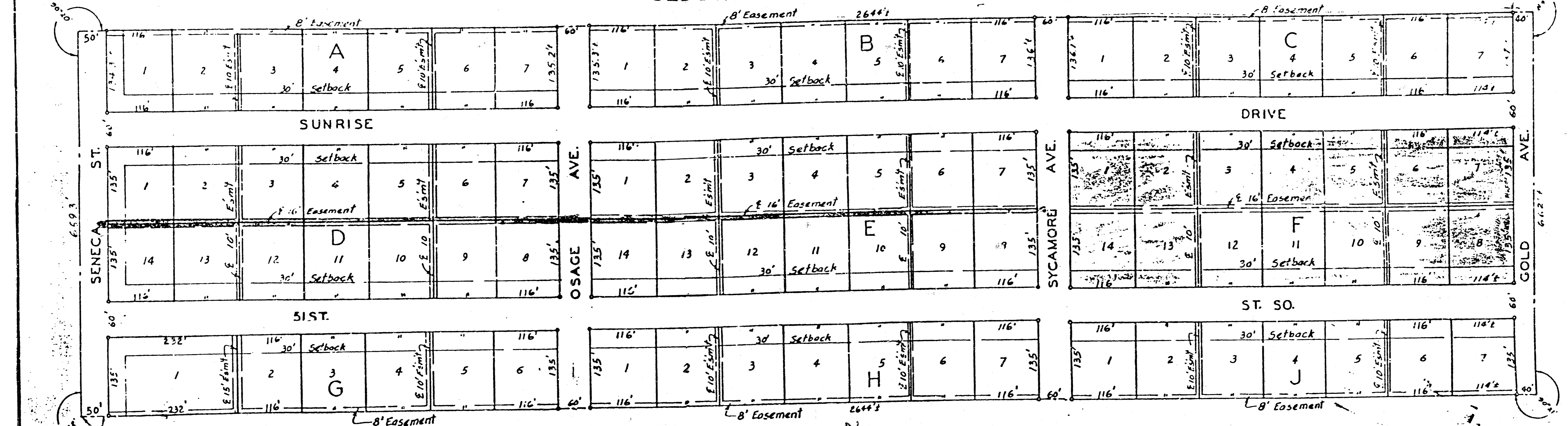
DESIGNED BY: MLM
 DRAWN BY: DLR

JOB NO.: 90-80
 DATE: 6-12-90

ID. NO. 740498
 MICHAEL E. LINDEBAK P.E. - CITY ENGINEER
 CITY OF WICHITA PROJECT NO. 468 82059

FILMED FROM THE BEST AVAILABLE COPY

SOUTH SENECA GARDENS SECOND ADDITION SEDGWICK COUNTY, KANSAS



SW 1/4 Sec 20, T28S, R1E of the 6th P.M.

State of Kansas }
County of Sedgwick }
I, Kenneth O. Taylor, civil engineer in said state and county do hereby certify that I have surveyed and platted "South Seneca Gardens Second Addition" Sedgwick County, Kansas, and that the accompanying plat is a true and correct exhibit of said survey described as follows: The S 1/2 of the S 1/4 of the NW 1/4 of Sec. 20, T28S, R1E of the 6th P.M.
Kenneth O. Taylor, Civil Engineer

Know all men by these presents that we, the Morris Building Company, Inc., a corporation by its president, W. L. Morris and its Sec.-Treas., Vera Stutzman, have caused the land described in the civil engineer's certificate to be platted into lots, blocks and streets to be known as "South Seneca Gardens Second Addition" Sedgwick County, Kansas. Easements are hereby granted as indicated on the plat for the construction and maintenance of all public utilities. The streets are hereby dedicated to and for the use of the public.
W. L. Morris, President
Vera Stutzman, Sec.-Treas.

State of Kansas }
County of Sedgwick }
Be it remembered that on this 21 day of June, 1954, before me a notary public in and for said county and state, came W. L. Morris, president, and Vera Stutzman, Sec.-Treas. of Morris Building Company, Inc., a corporation of the State of Kansas, personally known to me to be such officers, and to be the same persons who executed as such officers the foregoing instrument of writing in behalf of said corporation, and duly acknowledged the execution of same for themselves and for said corporation for the uses and purposes therein set forth.
In witness whereof, I have here unto set my hand and affixed my notary seal the day and year above written.
William B. Belle, Notary Public

My commission expires April 21, 1956.

This plat of "South Seneca Gardens Second Addition" Sedgwick County, Kansas, has been submitted to and considered by the City Planning Commission of the City of Wichita, Kansas, and is hereby transmitted to the Board of Commissioners of the City of Wichita, Kansas, with the recommendation that such plat be approved as proposed.
Dated this 15 day of June, 1954.
The City Planning Commission of the City of Wichita, Kansas.

G. H. Beckel, Chairman
J. H. ..., Secretary
Approved by the Board of City Commissioners this 22 day of June, 1954.
M. C. ..., Mayor
..., City Clerk
Approved by the Board of County Commissioners this 8th day of July, 1954.
..., County Clerk

Entered on transfer record this 8th day of July, 1954.
..., County Clerk

State of Kansas }
County of Sedgwick }
This is to certify that this instrument was filed for record in the register of Deed office on the 21 day of June, 1954, at 9 o'clock a.m., and is duly recorded.
..., Register of Deeds
..., Deputy

S2,4-16

Restatements 2 M 323 Page 106

ID. NO. 740498
CITY OF WICHITA PROJECT NO. 468 82059

PLAT OF SOUTH SENECA GARDENS 2ND ADDITION

MID CONTINENT ENGINEERS
WICHITA, KANSAS

DESIGNED M.L.M. SCALE 1"=100'
DETAILED D.L.R. DATE 6-12-50
QUANTITIES SHEET 3 OF 3

FILMED FROM THE BEST AVAILABLE COPY