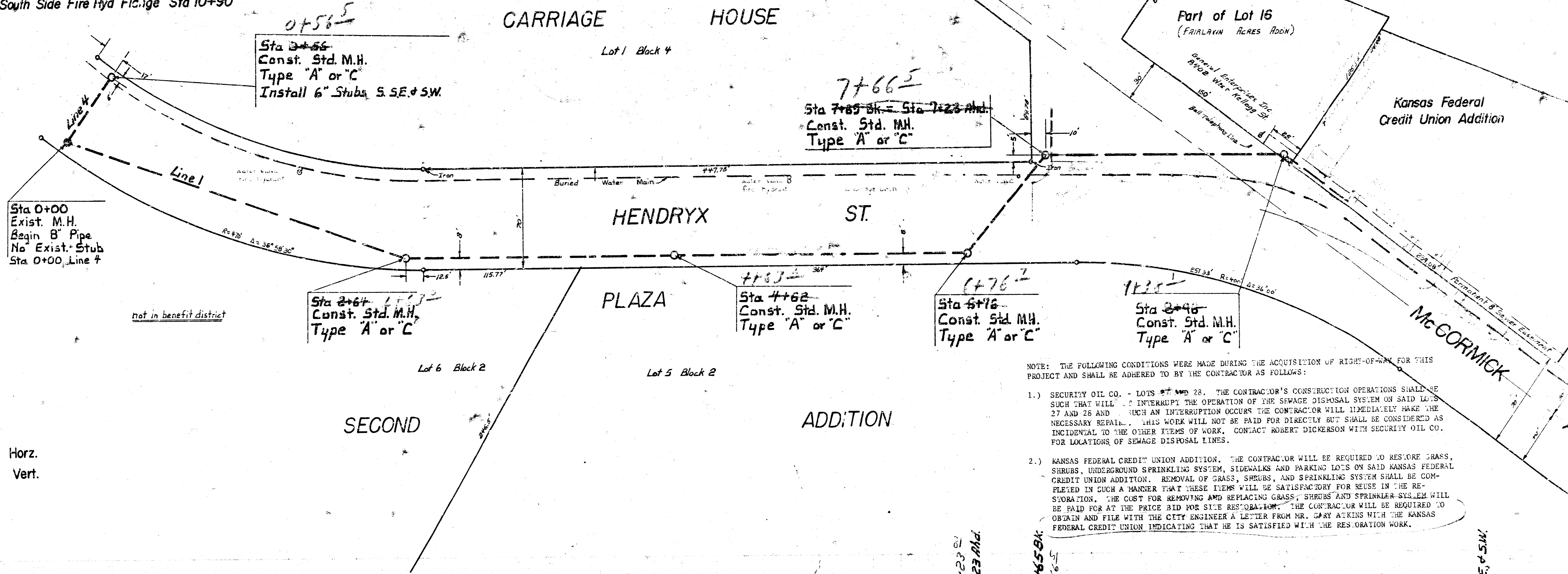
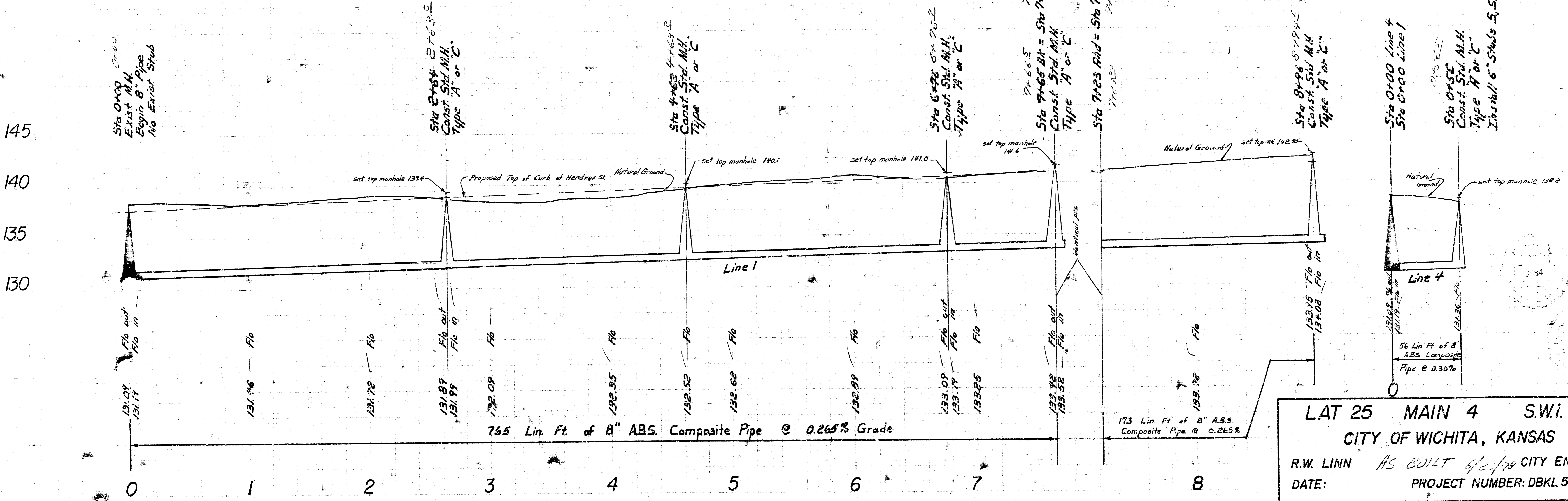


BM 141.55 City Std. Disc 31.2' ft. West of C Tyler & 88.2' SE. of center of U.S. 54 Pavements.
 BM 143.43 R.R. Spk. South Side Power Pole at NE. Cor. Robin Rd., Topaz, & Evergreen intersection
 BM 144.71 'M' in Mueller South Side Fire Hyd. Flange Sta 10+90



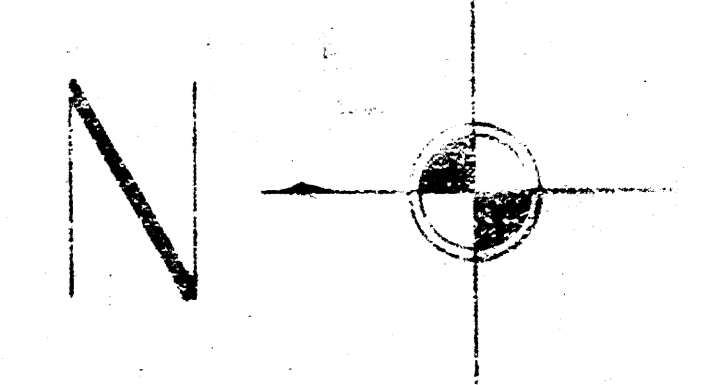
Plan Scale 1" = 40'
 Profile Scale 1" = 40' Horz.
 1" = 5' Vert.

- NOTE: THE FOLLOWING CONDITIONS WERE MADE DURING THE ACQUISITION OF RIGHT-OF-WAY FOR THIS PROJECT AND SHALL BE ADHERED TO BY THE CONTRACTOR AS FOLLOWS:
- 1.) SECURITY OIL CO. - LOTS 27 AND 28. THE CONTRACTOR'S CONSTRUCTION OPERATIONS SHALL BE SUCH THAT WILL NOT INTERRUPT THE OPERATION OF THE SEWAGE DISPOSAL SYSTEM ON SAID LOTS 27 AND 28 AND IF SUCH AN INTERRUPTION OCCURS THE CONTRACTOR WILL IMMEDIATELY MAKE THE NECESSARY REPAIR. THIS WORK WILL NOT BE PAID FOR DIRECTLY BUT SHALL BE CONSIDERED AS INCIDENTAL TO THE OTHER ITEMS OF WORK. CONTACT ROBERT DICKERSON WITH SECURITY OIL CO. FOR LOCATIONS OF SEWAGE DISPOSAL LINES.
 - 2.) KANSAS FEDERAL CREDIT UNION ADDITION. THE CONTRACTOR WILL BE REQUIRED TO RESTORE GRASS, SHRUBS, UNDERGROUND SPRINKLING SYSTEM, SIDEWALKS AND PARKING LOTS ON SAID KANSAS FEDERAL CREDIT UNION ADDITION. REMOVAL OF GRASS, SHRUBS, AND SPRINKLING SYSTEM SHALL BE COMPLETED IN SUCH A MANNER THAT THESE ITEMS WILL BE SATISFACTORY FOR REUSE IN THE RESTORATION. THE COST FOR REMOVING AND REPLACING GRASS, SHRUBS AND SPRINKLER SYSTEM WILL BE PAID FOR AT THE PRICE BID FOR SITE RESTORATION. THE CONTRACTOR WILL BE REQUIRED TO OBTAIN AND FILE WITH THE CITY ENGINEER A LETTER FROM MR. GAY ATKINS WITH THE KANSAS FEDERAL CREDIT UNION INDICATING THAT HE IS SATISFIED WITH THE RESTORATION WORK.

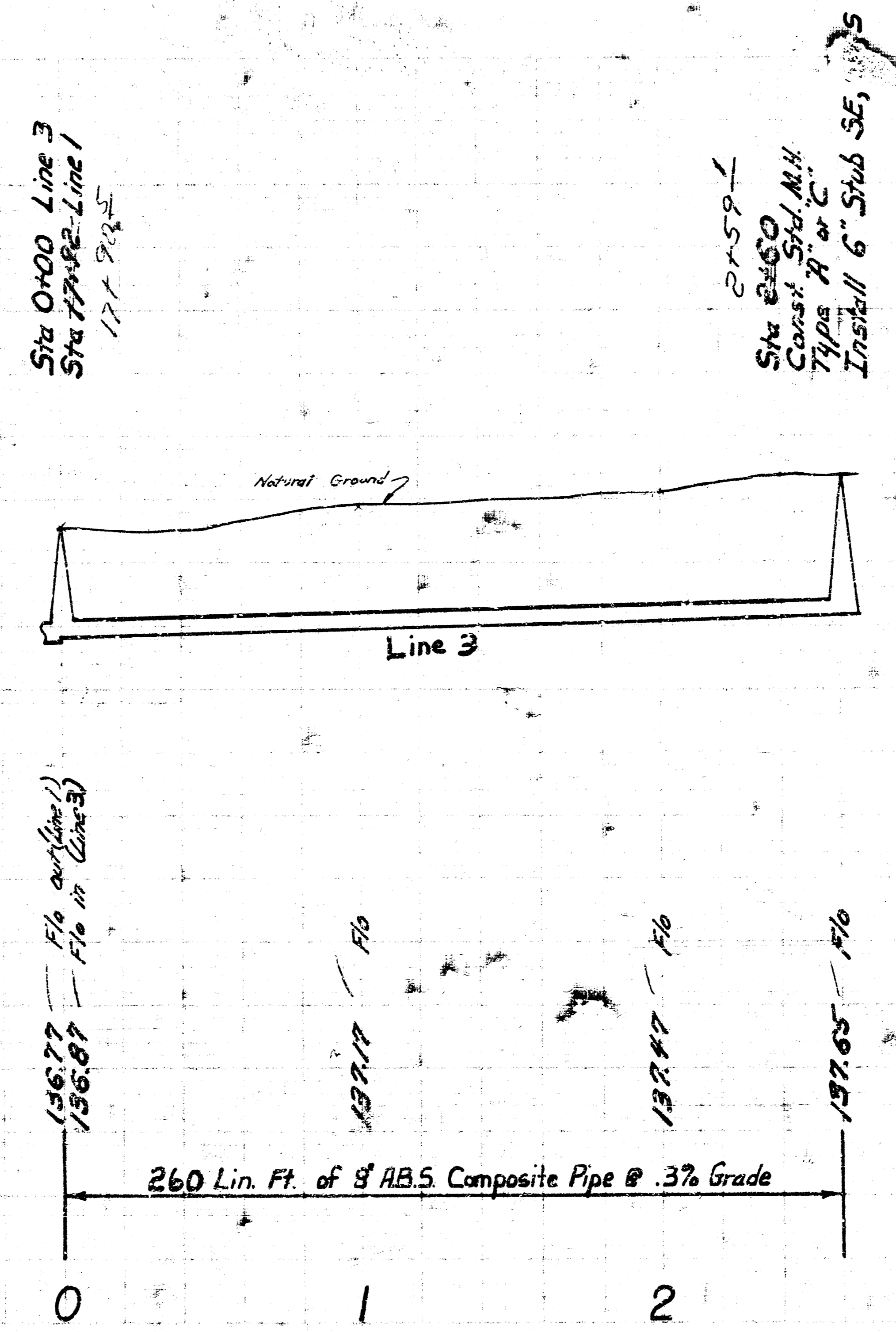
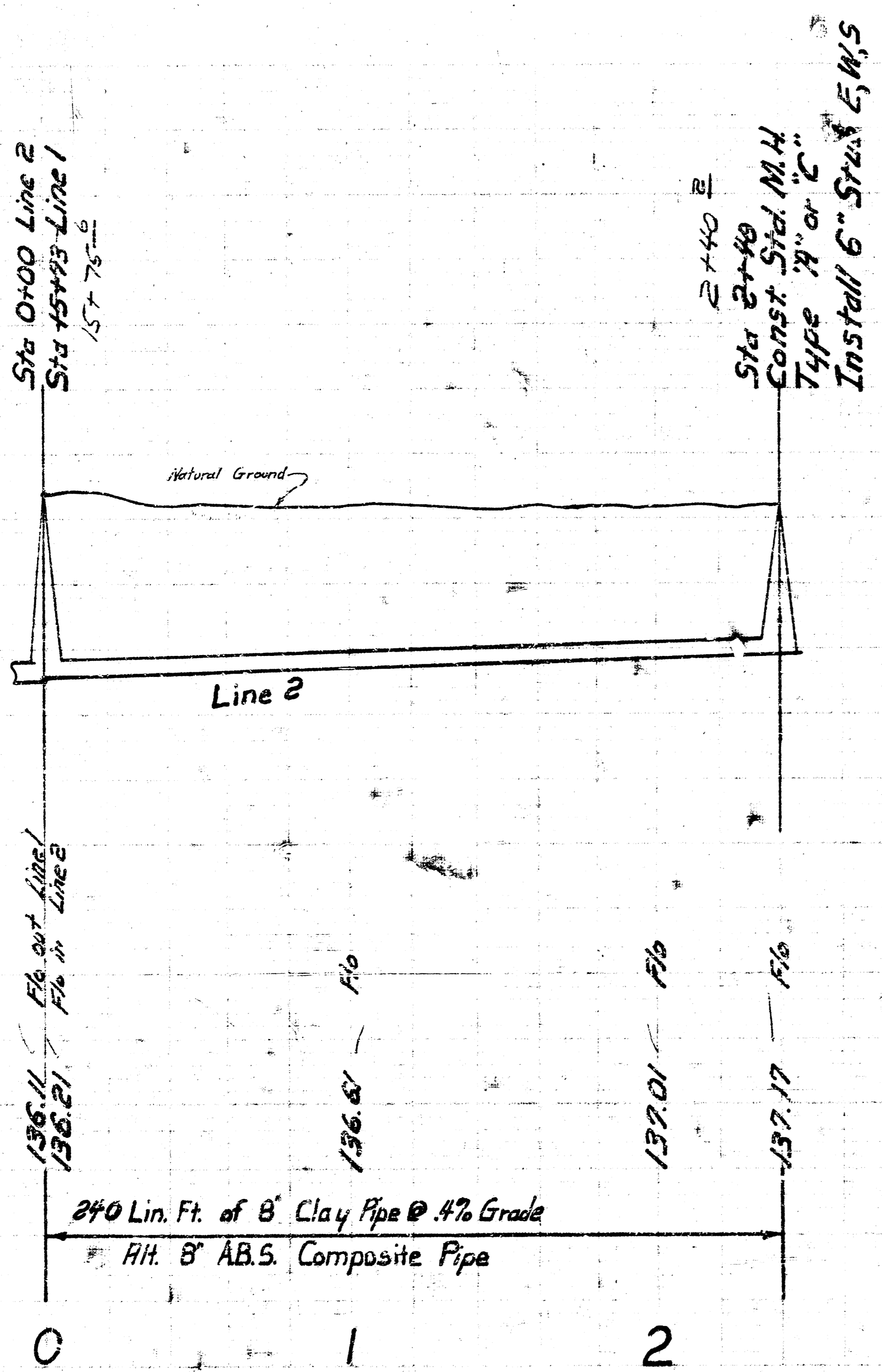
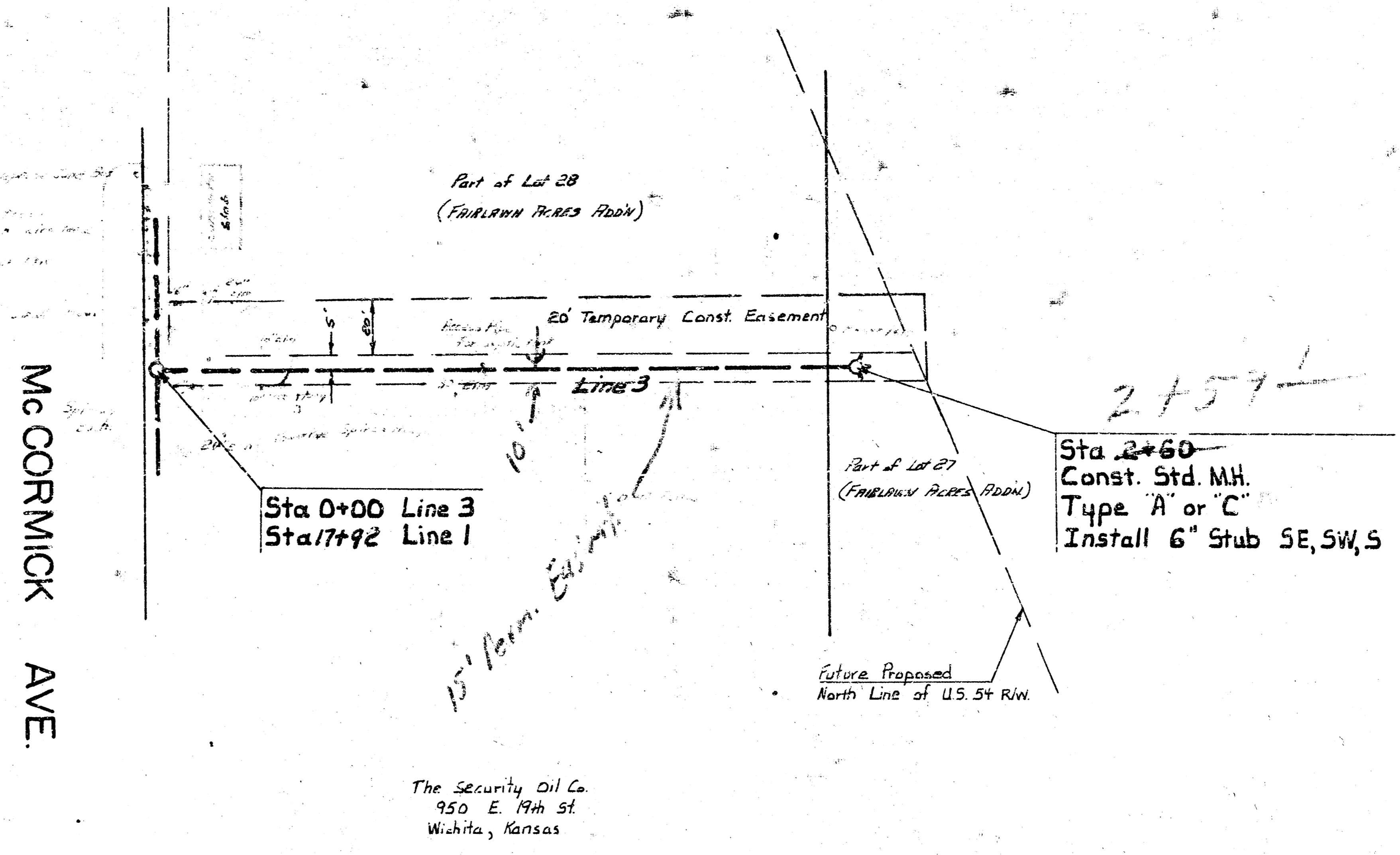
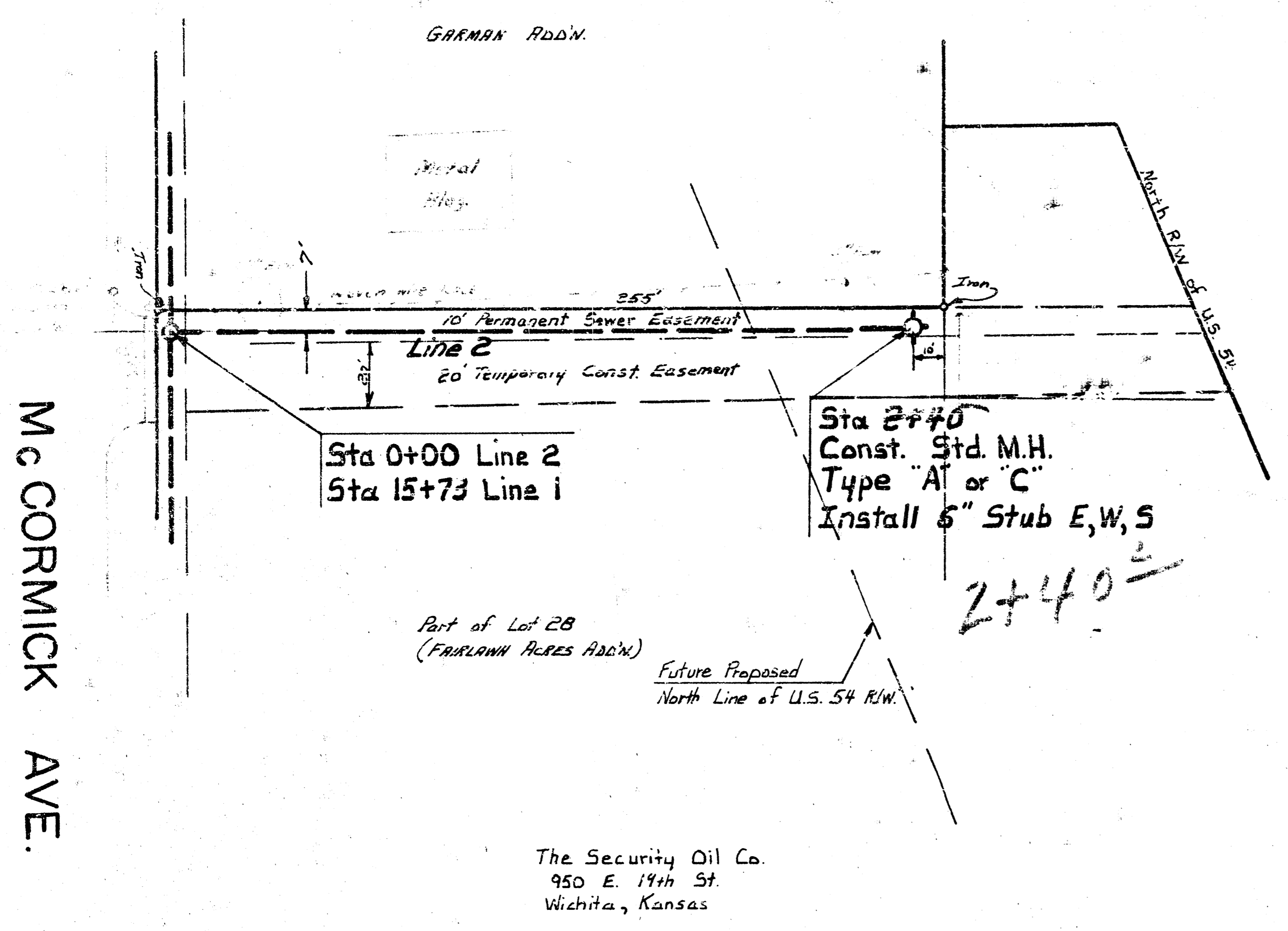


LAT 25 MAIN 4 S.W.I.
 CITY OF WICHITA, KANSAS
 R.W. LINN AS BUILT 6/20/78 CITY ENGINEER
 DATE: PROJECT NUMBER: DBKL 57701

As built 6-20-78



Plan Scale 1" = 40'
Profile Scale 1" = 40' vert
1" = 5' vert



LAT 25 MAIN 4 SWI
AS BUILT 4/20/78 Project No. DBKL577011