

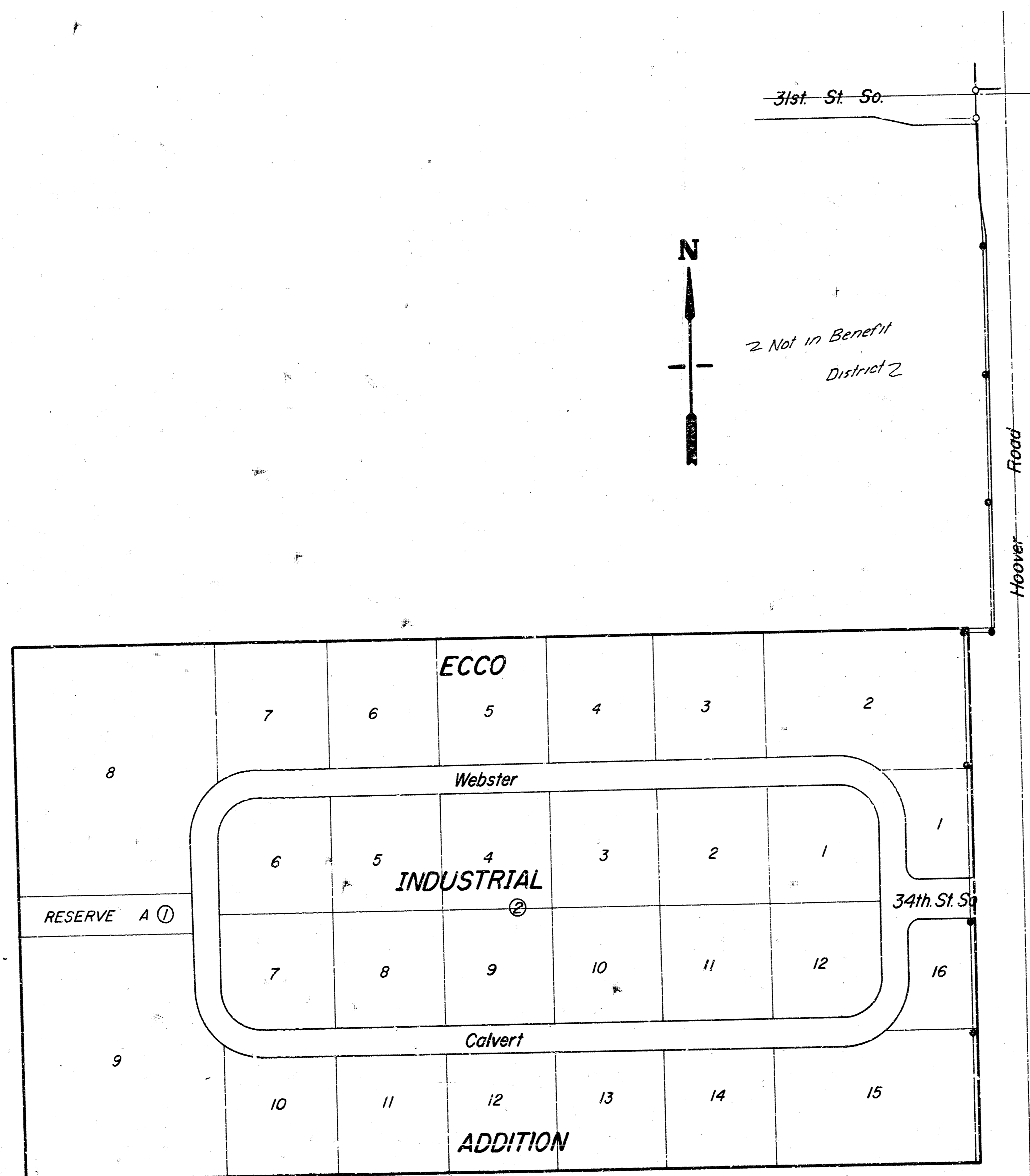
Main 7, Southwest Interceptor Sewer
468-76-245-80229-000-000-001

City of Wichita, Kansas
 Dep't. of Public Works-Eng. Div
 Dean S. Sellers-Acting City Engineer
 Date _____

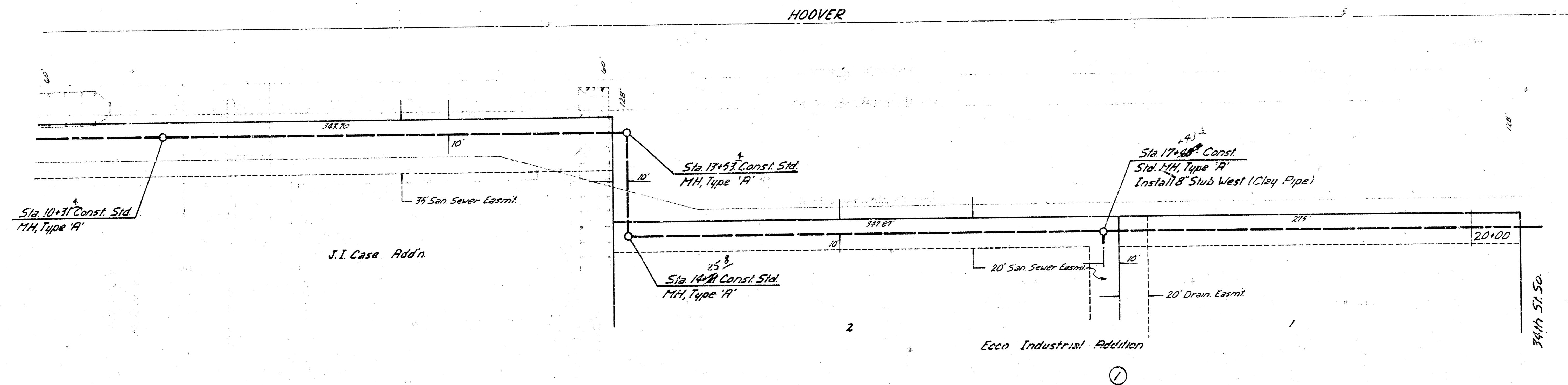
GENERAL NOTES

1. FIELD ENGINEER TO MARK PILES TO ANY DEPTH THAT MAY BE DISTURBED AND REPLACE ANY THAT ARE DESTROYED.
2. A MINIMUM OF ONE LANE OF TRAFFIC IS TO BE MAINTAINED ON 31ST STREET SOUTH AT ALL TIMES.
3. CONTRACTOR TO CONTACT BAYTS MANUFACTURING TO MAKE ARRANGEMENTS TO MAINTAIN REGULAR ACCESS TO BAYTS AT ALL TIMES DURING THEIR NORMAL WORKING HOURS.
4. CONTRACTOR TO NOTIFY THE FOLLOWING UTILITY COMPANIES A MINIMUM OF 48 HOURS IN ADVANCE OF BEGINNING CONSTRUCTION:

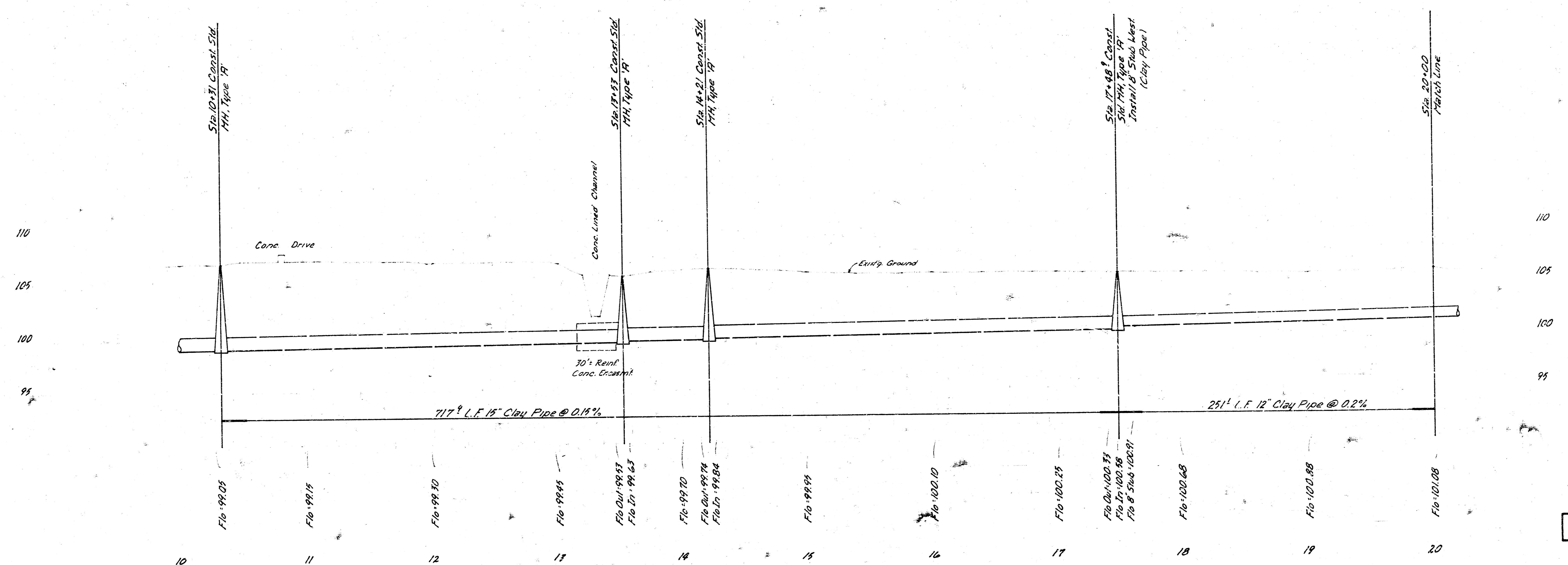
CONTINENTAL OIL COMPANY	1-800-231-2551
KANSAS GAS SUPPLY COMPANY	1-316-254-7243 or 1-316-524-3621
WICHITA GAS UTILITY	1-316-263-4655
ARSLA GAS COMPANY	1-316-263-3161
SOUTHWESTERN BELL TELEPHONE	
WICHITA WATER DEPARTMENT	
5. COST OF 3" STUBS IS TO BE INCIDENTAL TO HANDLE CONSTRUCTION.
6. CONCRETE FLOOR REMOVED AND REPLACED SHALL BE PAID FOR AS 6" CONCRETE DRIVE.
7. CONCRETE REBAR REMOVAL AND REPLACEMENT IS TO BE PAID FOR AS 6" CONCRETE DRIVE.
8. REINFORCED CONCRETE ENCASING IS TO BEGIN AND END AT A JOINT IN 12" PIPE WHEN PIPE USED IS CLAY PIPE.
9. CONTRACTOR'S METHOD FOR HANDLING SEWAGE FLOOD DURING CONSTRUCTION OF THIS PROJECT SHALL BE APPROVED BY THE ENGINEER.
10. CONTRACTOR SHALL EXCAVATE WICHITA GAS UTILITY PIPELINE AT STATION 12+88 PRIOR TO LAYING ANY SEWER PIPE SUCH THAT THE FIELD ENGINEER CAN MAKE AN ACCURATE DETERMINATION OF THE ELEVATION OF THE PIPELINE.
11. CONTRACTOR SHALL GIVE THE SEDGWICK COUNTY DEPARTMENT OF PUBLIC WORKS A MINIMUM ADVANCE NOTICE OF SEVEN DAYS PRIOR TO START OF CONSTRUCTION.

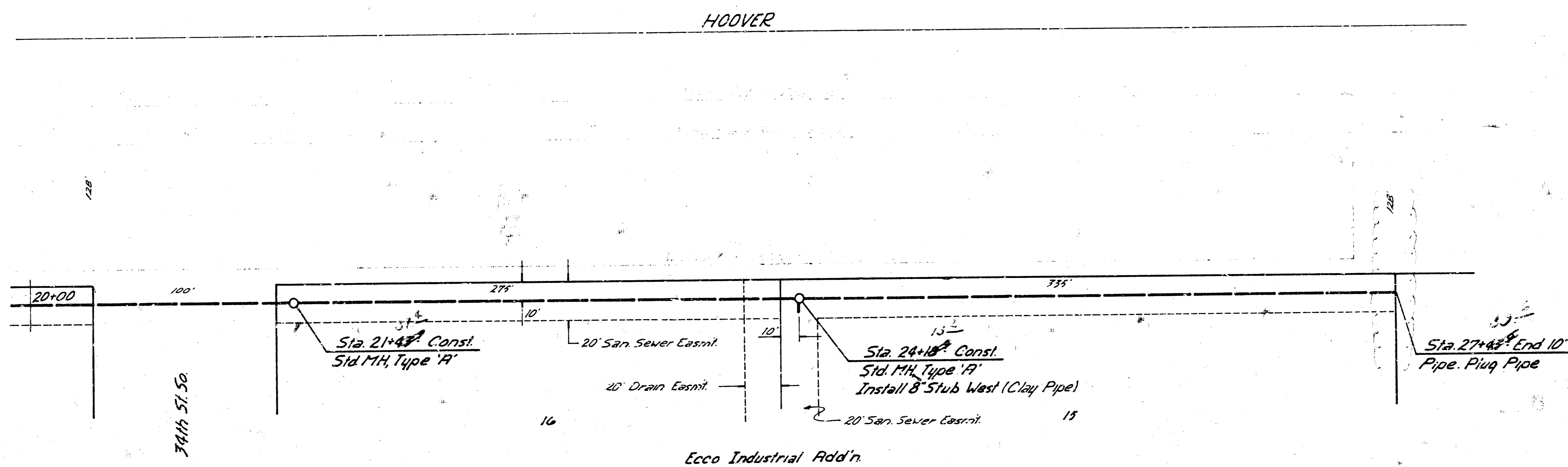


As Built J.L.
 8-26-80 E281

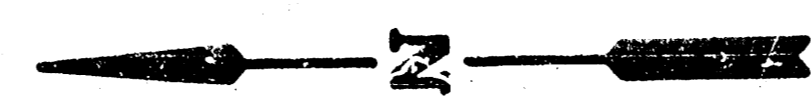


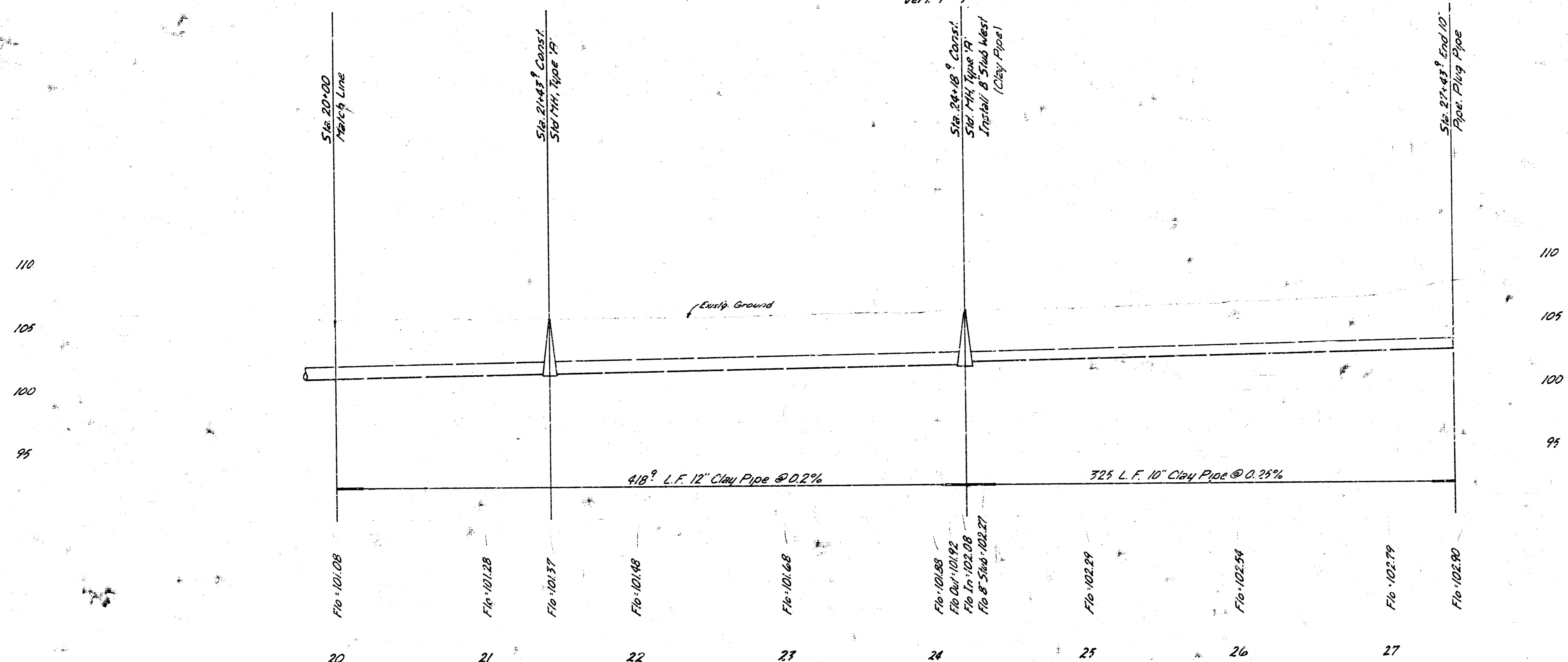
SCALE
 Hort. 1"=40'
 Vert. 1"=5'





Ecco Industrial Add'n
①


 SCALE
 Horz. 1" = 40'
 Vert. 1" = 5'



Main 7, S.W.I.