



LAT 1, MAIN 10, SW. INTERCEPTOR SEWER

CITY OF WICHITA, KANSAS

R.W. BRUGGEMAN
DIRECTOR OF ENGINEERING CITY ENGINEER

PROJ. NO. 468-76-245-80685-000-000-001

NOTE: TOPS OF MANHOLES SHALL BE SET 0.4' ABOVE EXISTING GROUND EXCEPT WHERE A SPECIFIC ELEVATION IS SHOWN ON PLANS.

Line 1 Sheet 3-5
Line 2 Sheet 6
Line 3 Sheet 7
Line 4 Sheet 7

As Built
JBB
7-81

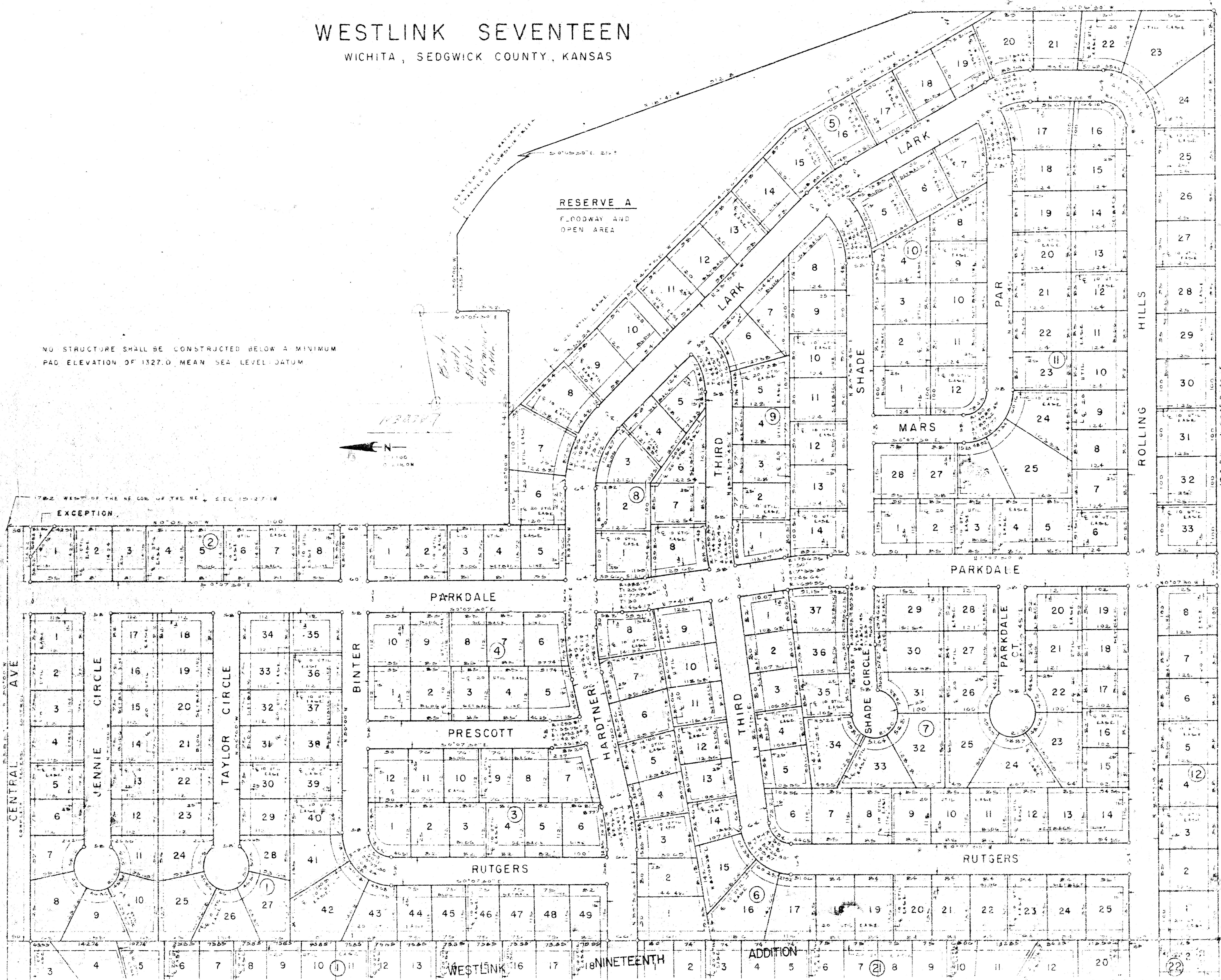
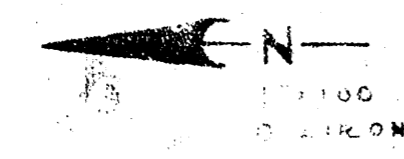


WESTLINK SEVENTEEN

WICHITA, SEDGWICK COUNTY, KANSAS

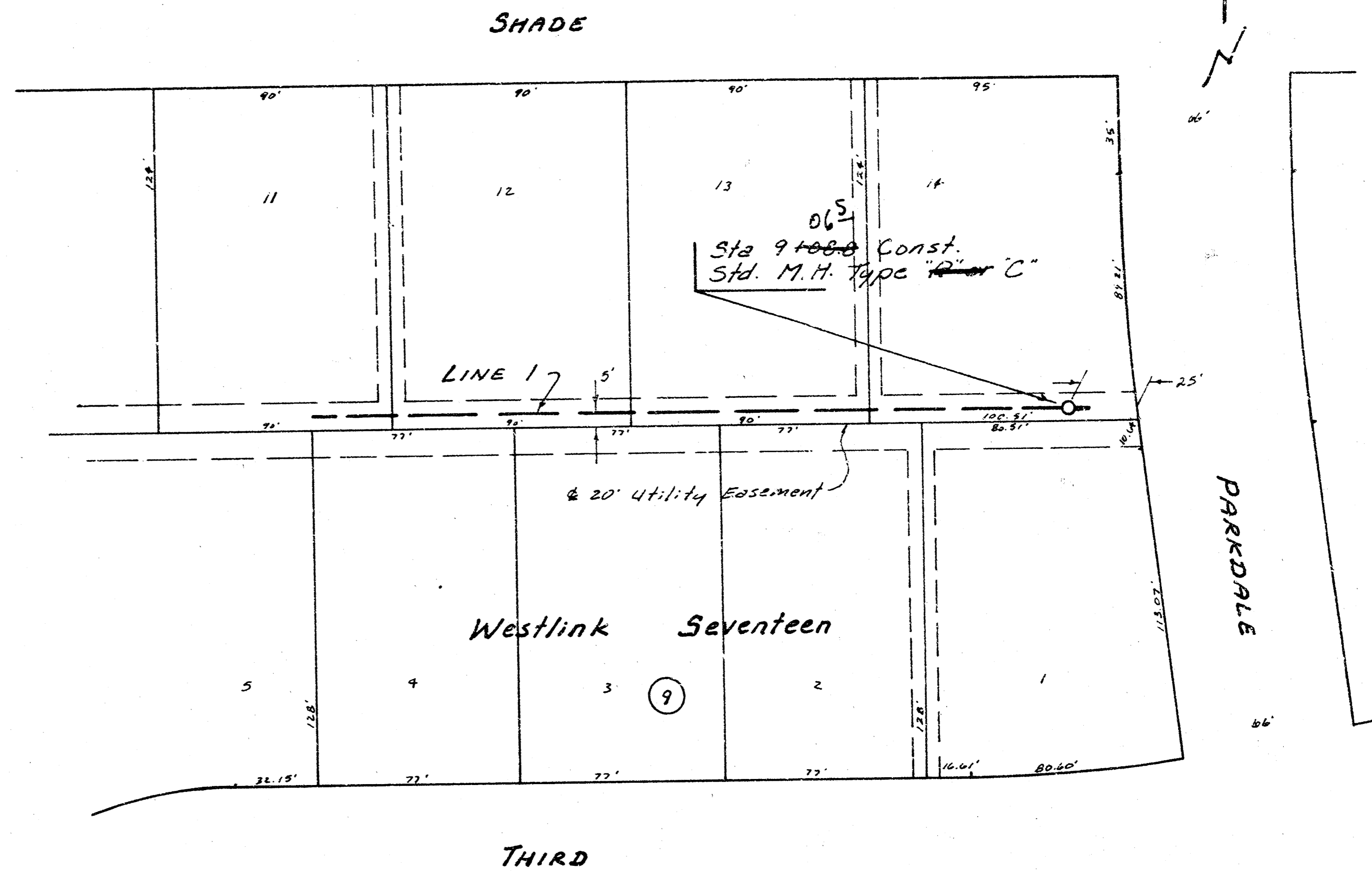
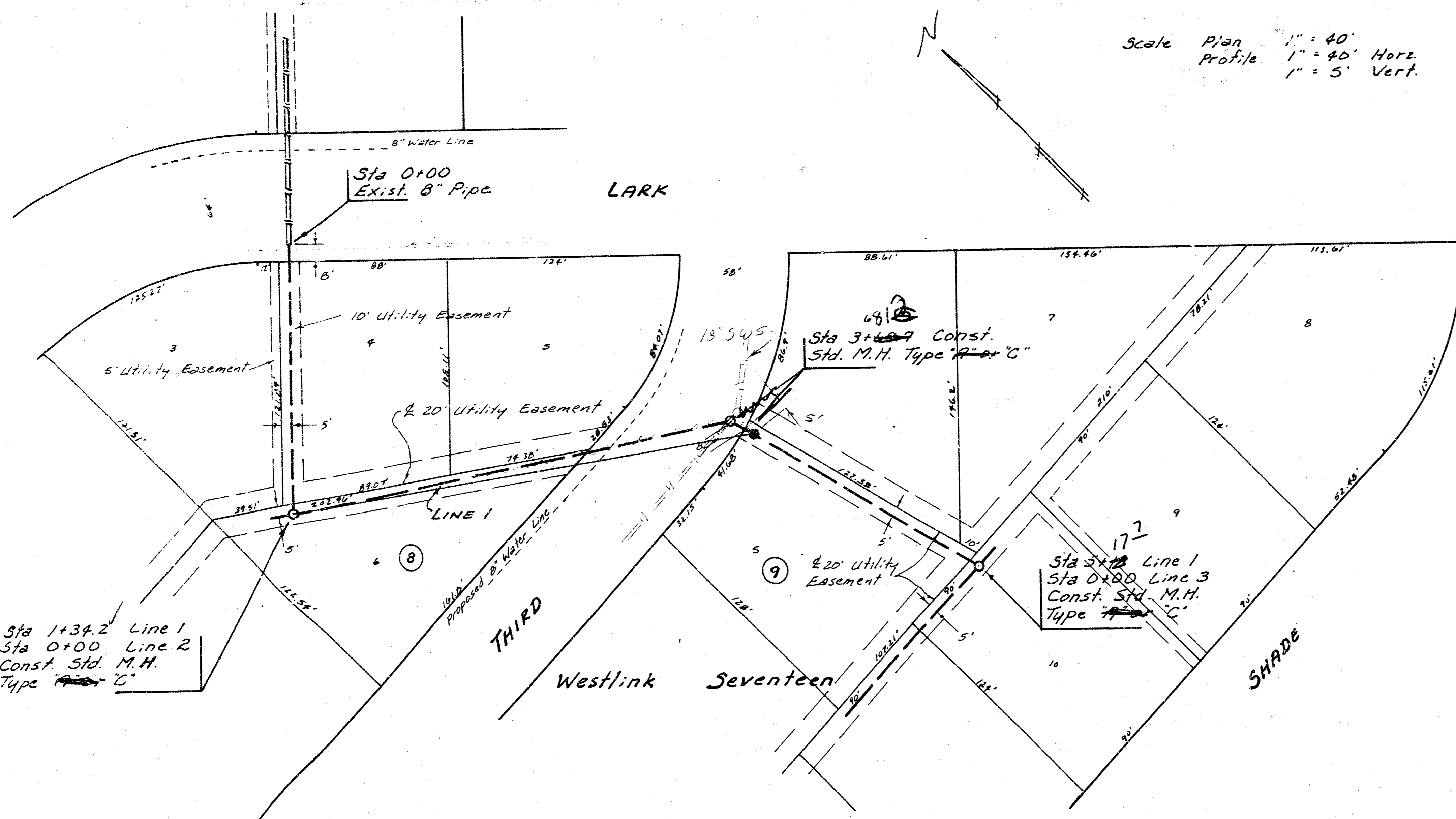
NO STRUCTURE SHALL BE CONSTRUCTED BELOW A MINIMUM
PAD ELEVATION OF 1327.0 MEAN SEA LEVEL DATUM

RESERVE A
FLOODWAY AND
OPEN AREA

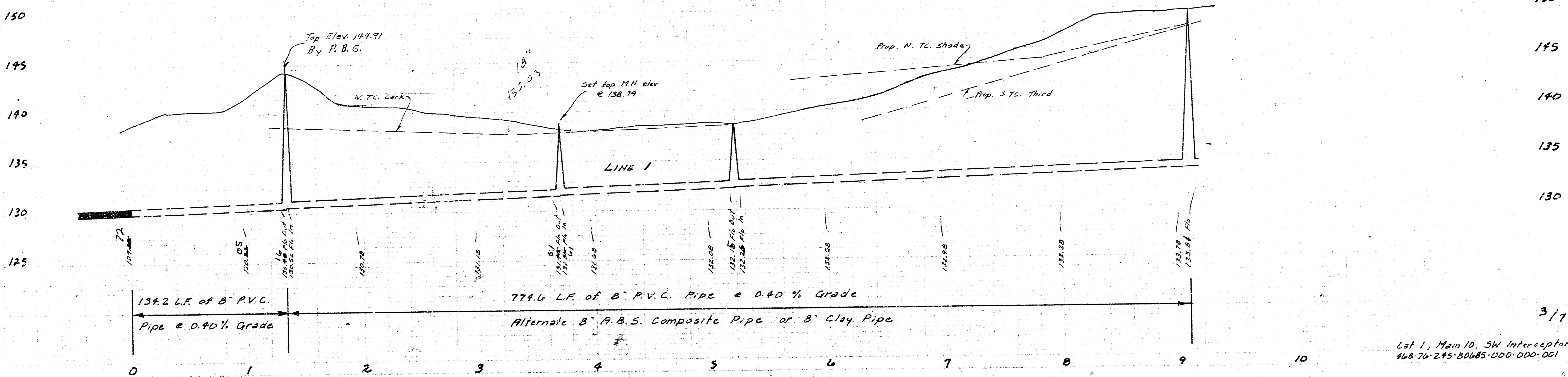


Scale Plan 1" = 40'
 Profile 1" = 40' Horiz.
 1" = 5' Vert.

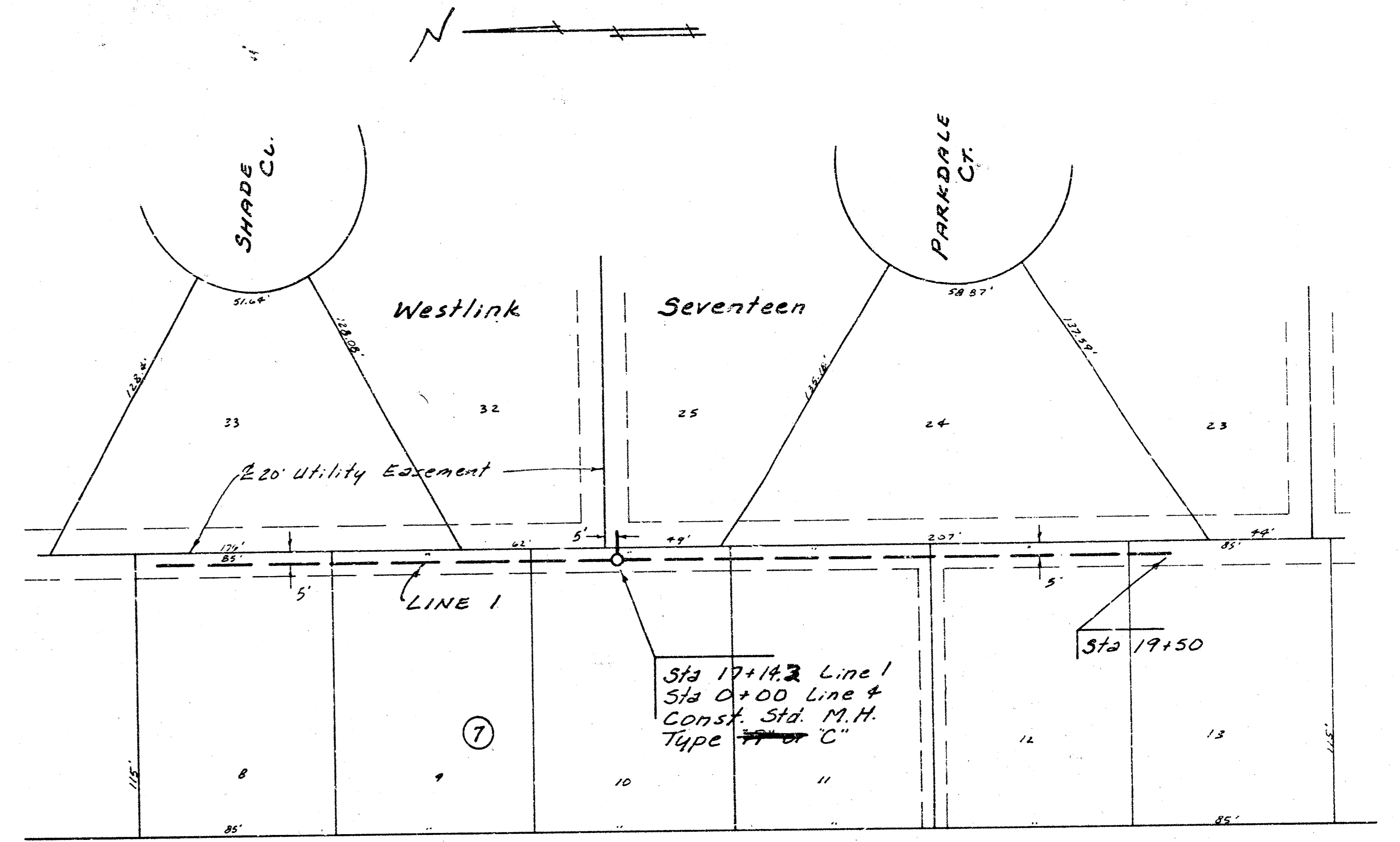
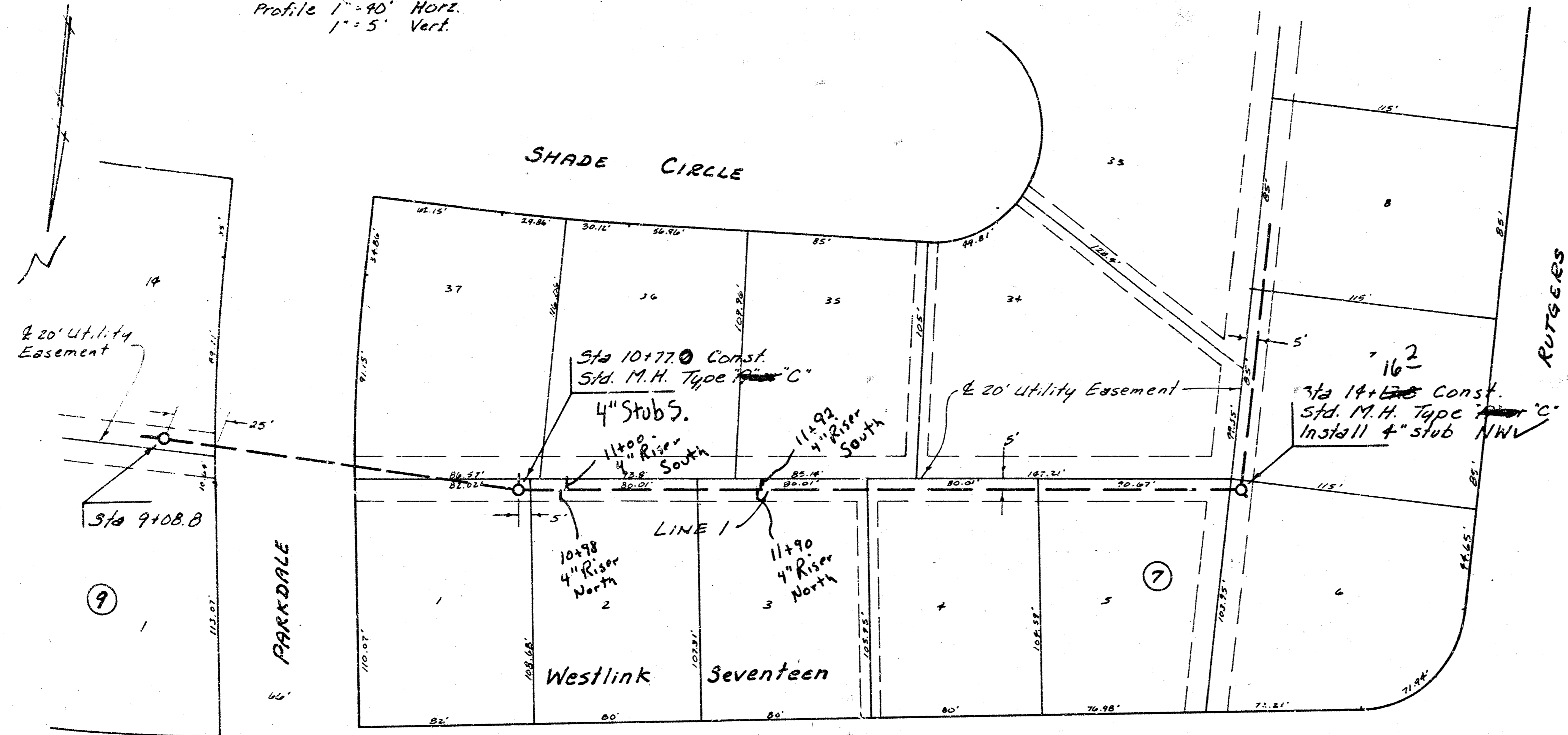
B.M. 137.55 "a" Top West curb of Lark @ E and
 Return @ EL. Third.
 B.M. 144.00 "a" Top South Curb Lark @ EL. Parkdale



Sta 0+00 Exist. 8" Pipe
 Sta 1+34.2 Line 1
 Sta 0+00 Line 2
 Const. Std. M.H. Type "C"
 Sta 3+40.7 Const. Std. M.H. Type "C"
 Sta 5+19 Line 1
 Sta 0+00 Line 3
 Const. Std. M.H. Type "C"
 Sta 9+00.8 Const. Std. M.H. Type "C"



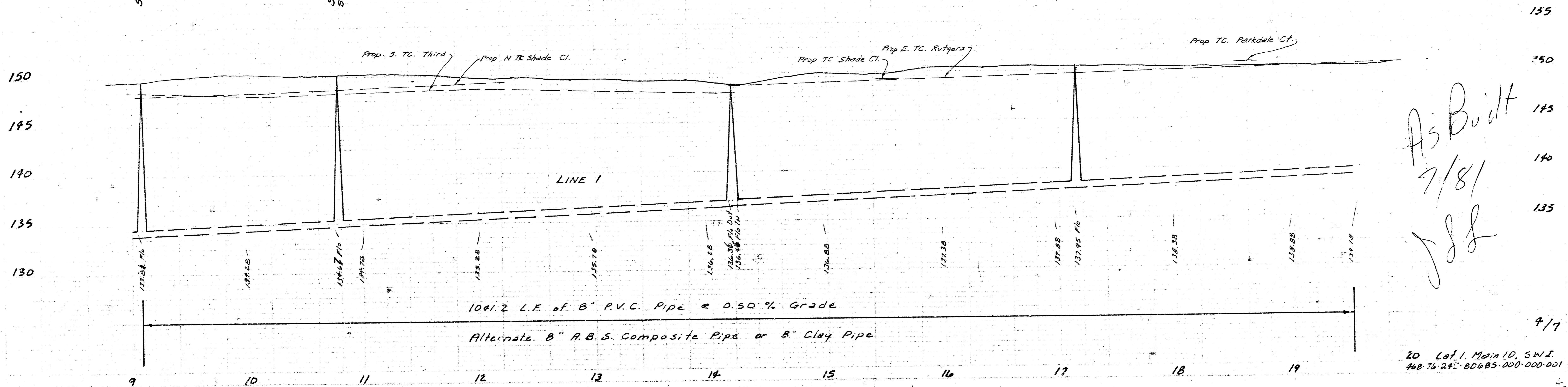
Scale Plan 1" = 40'
 Profile 1" = 40' Horiz.
 1" = 5' Vert.



THIRD

RUTGERS

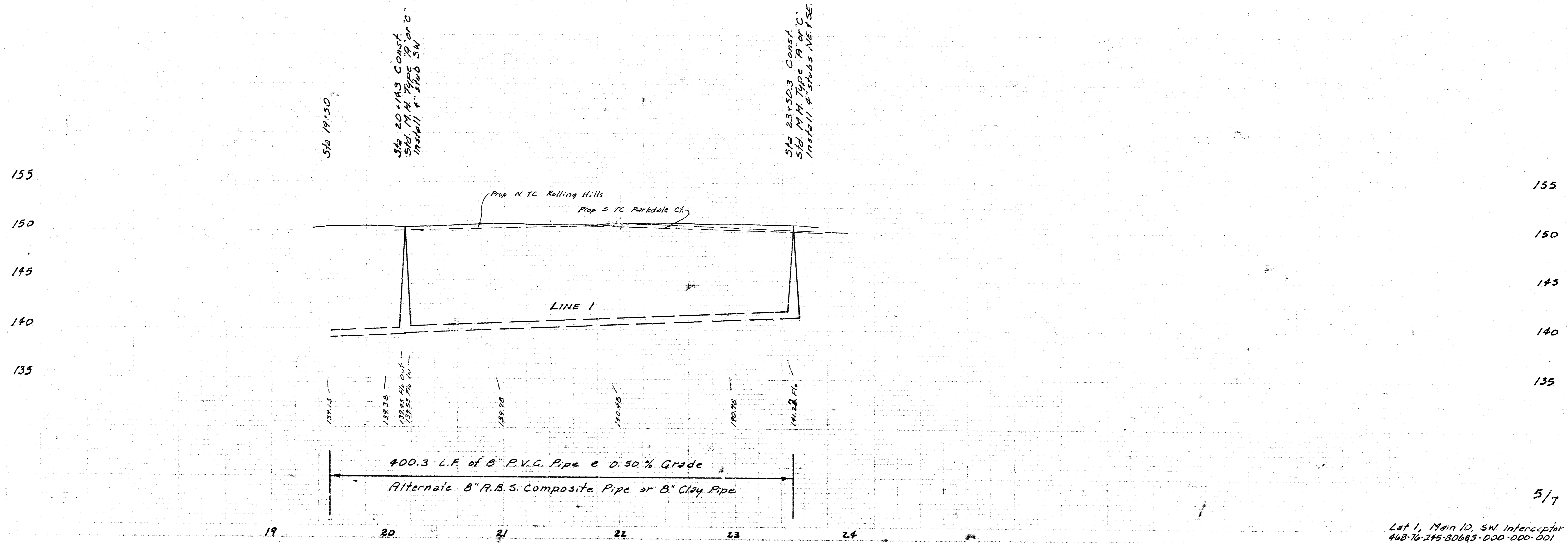
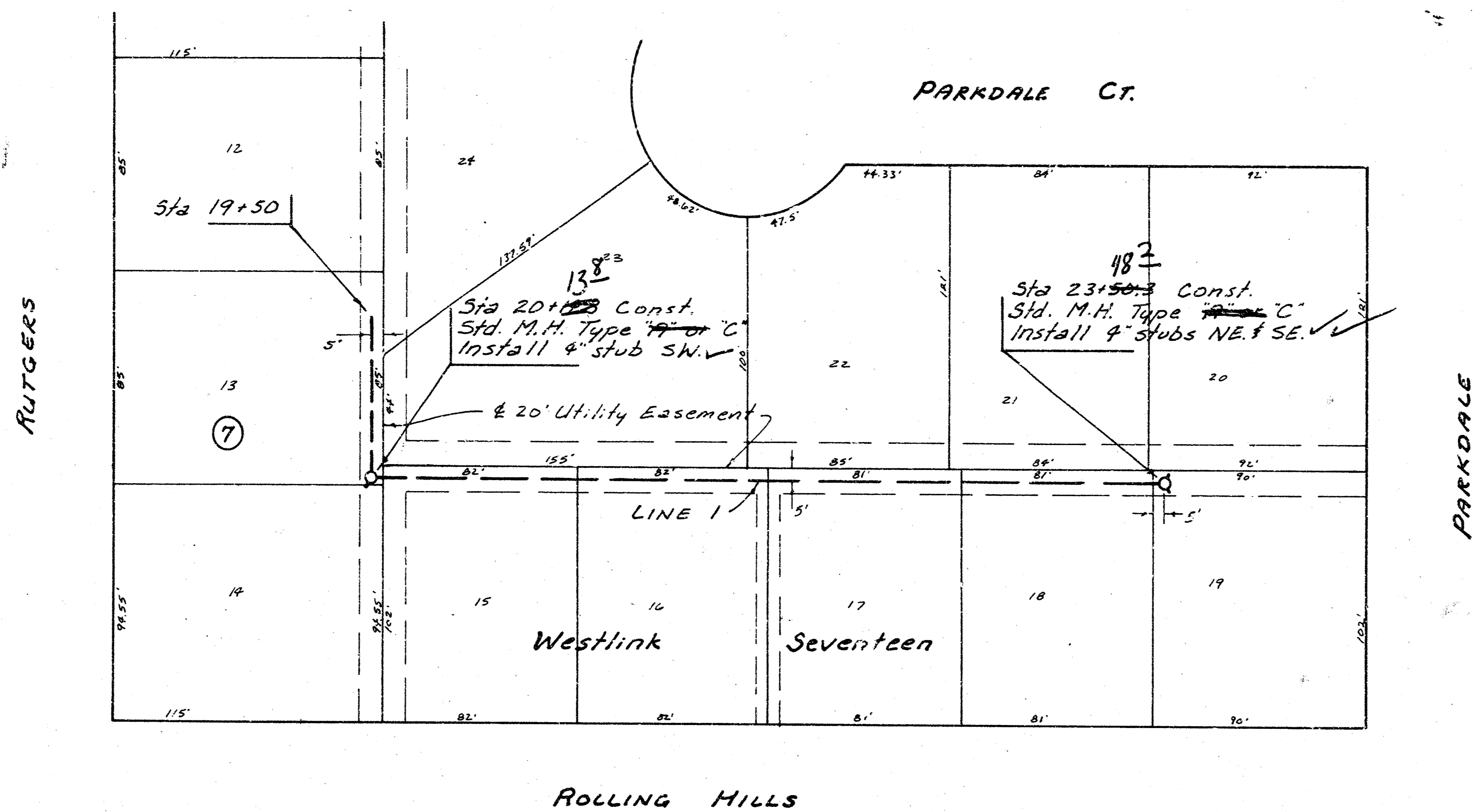
Sta 9+08.8
 Sta 10+77.0 Const. Std. M.H. Type "C"
 Sta 14+17.8 Const. Std. M.H. Type "C" Install 4" stub NW
 Sta 17+14.2 Line 1 Sta 0+00 Line 1 Const. Std. M.H. Type "C"
 Sta 17+50



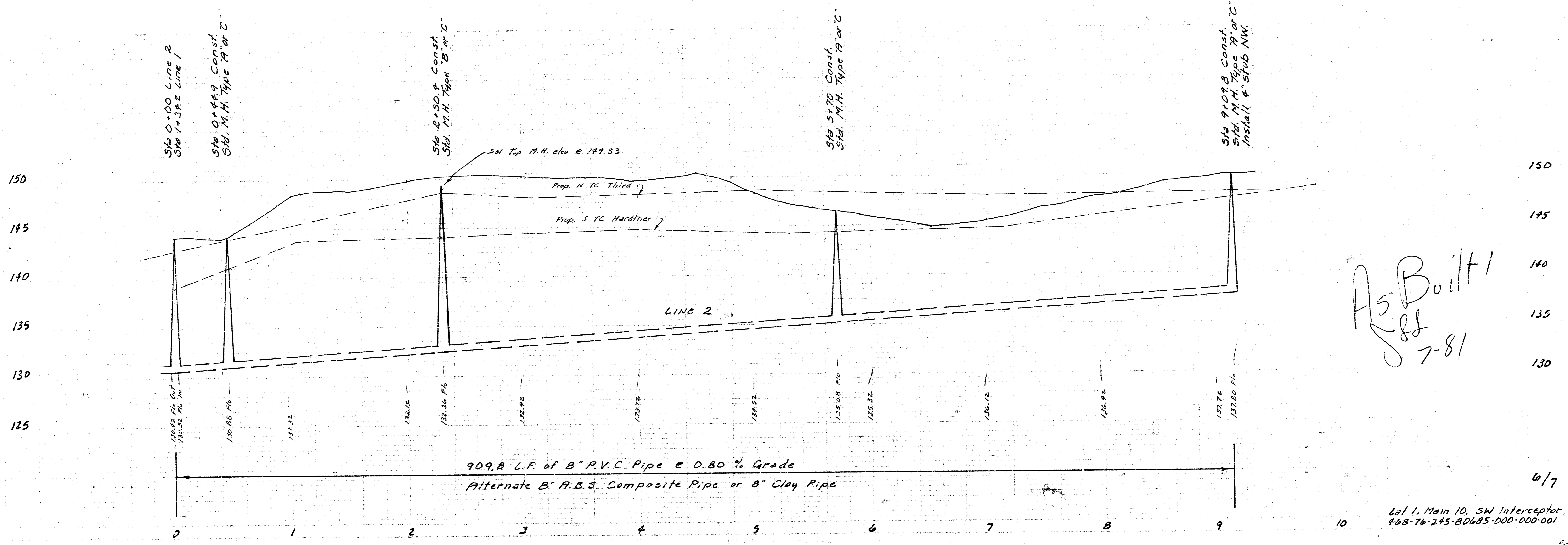
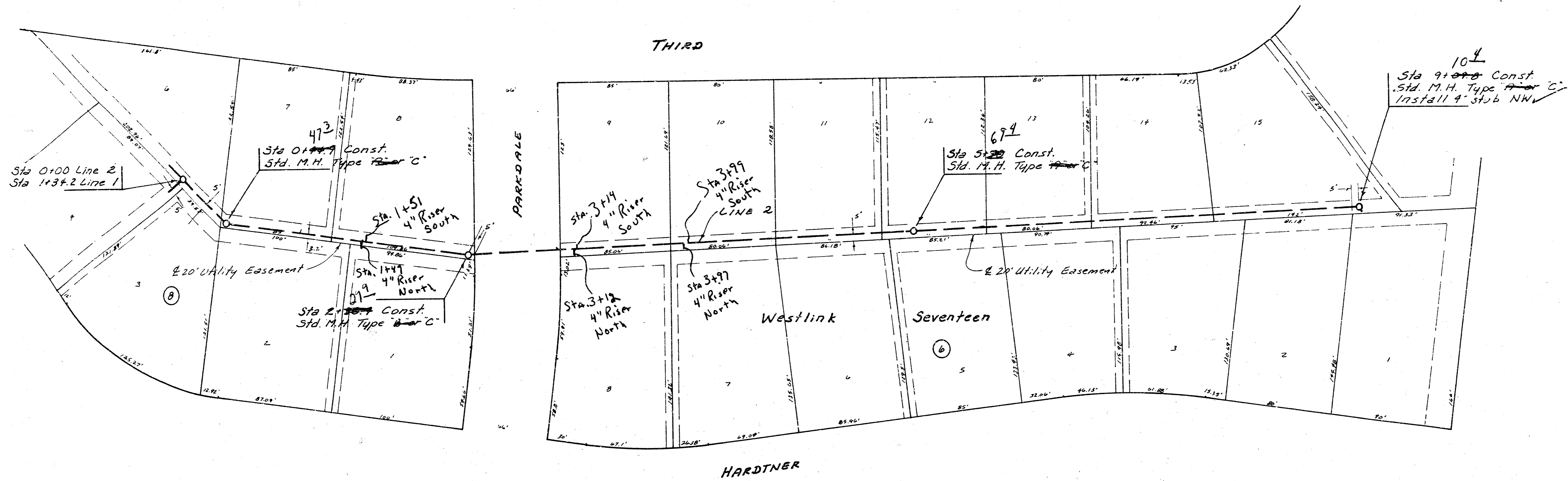
As Built
 7/81
 JSS

9/7

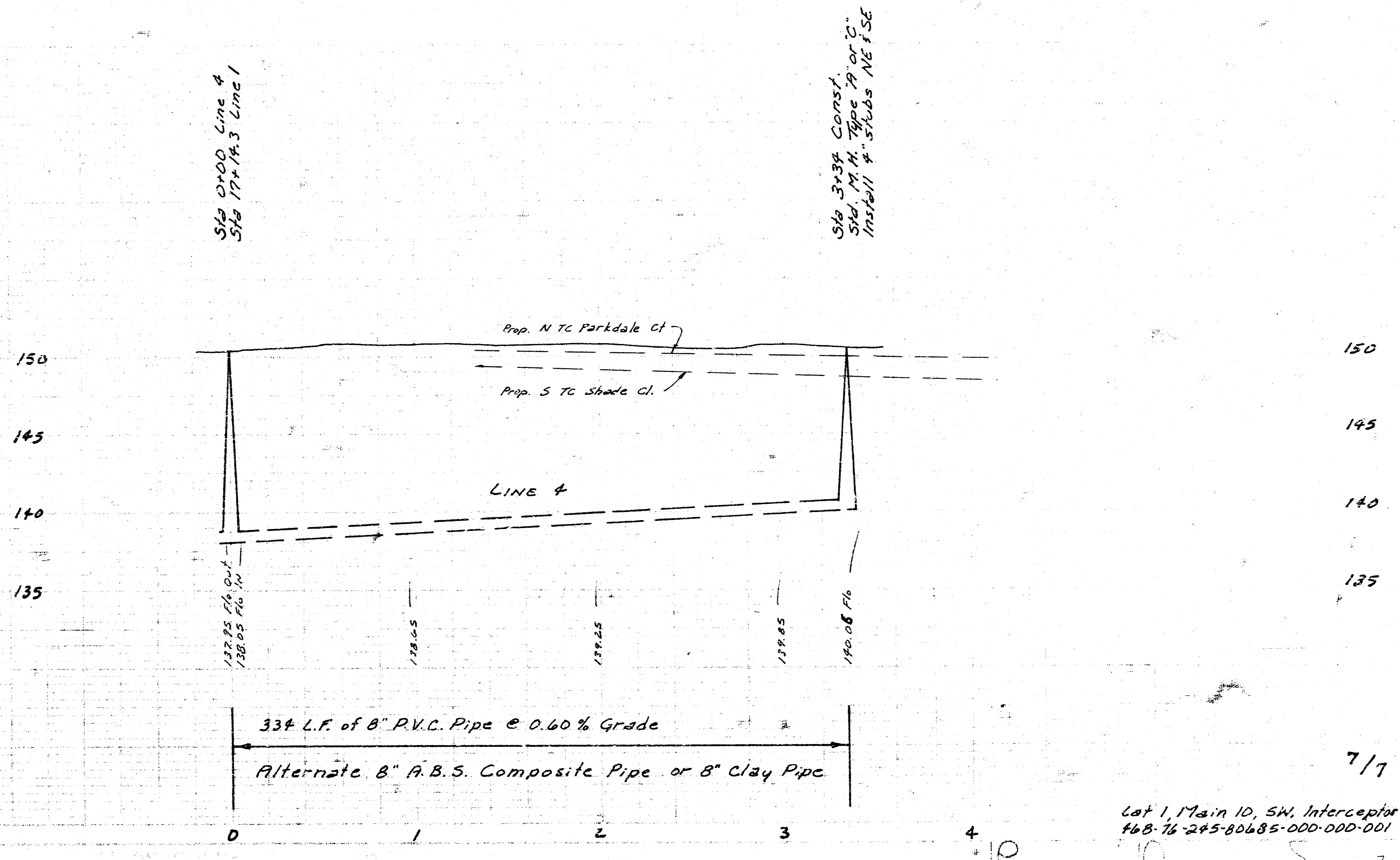
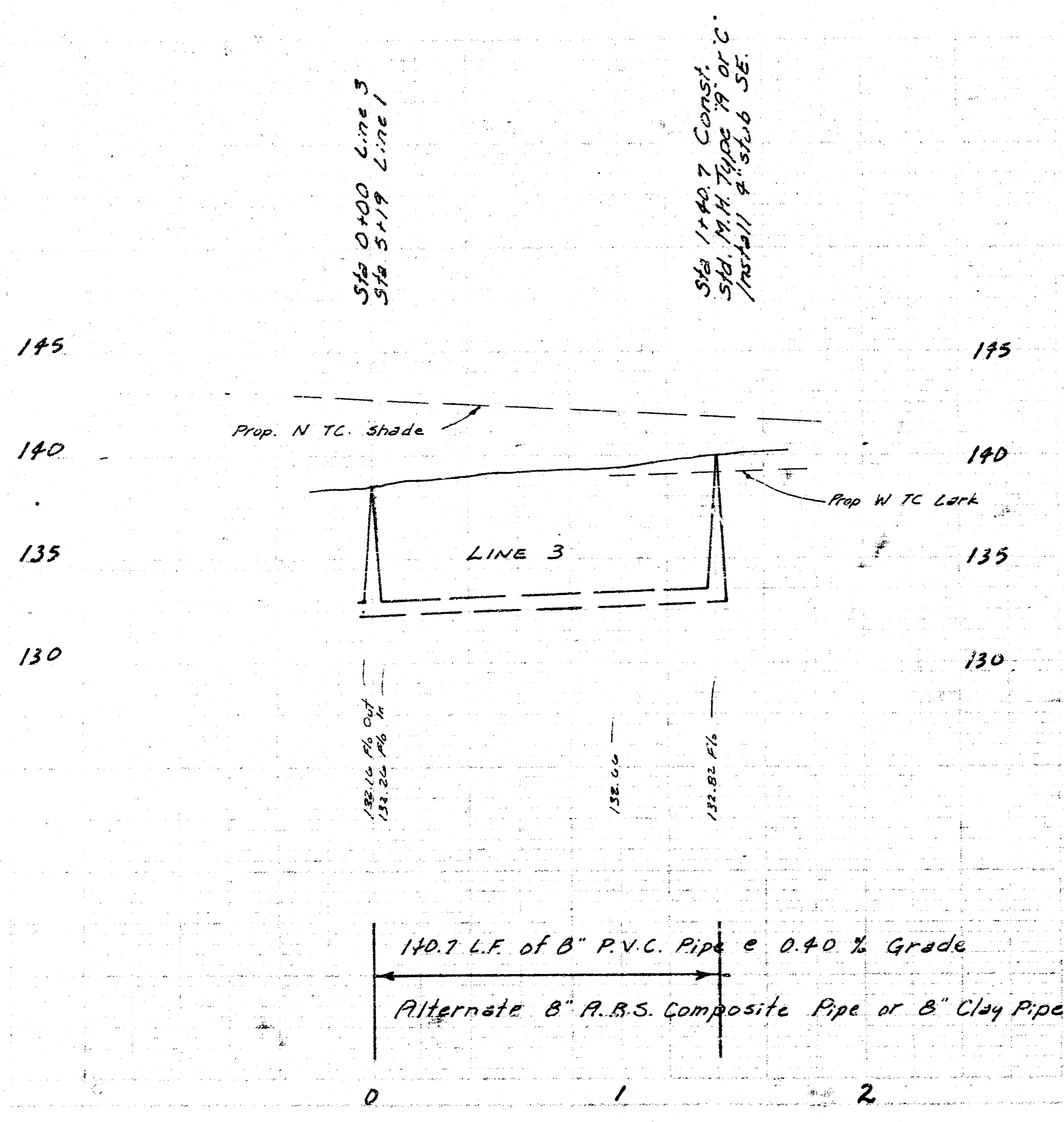
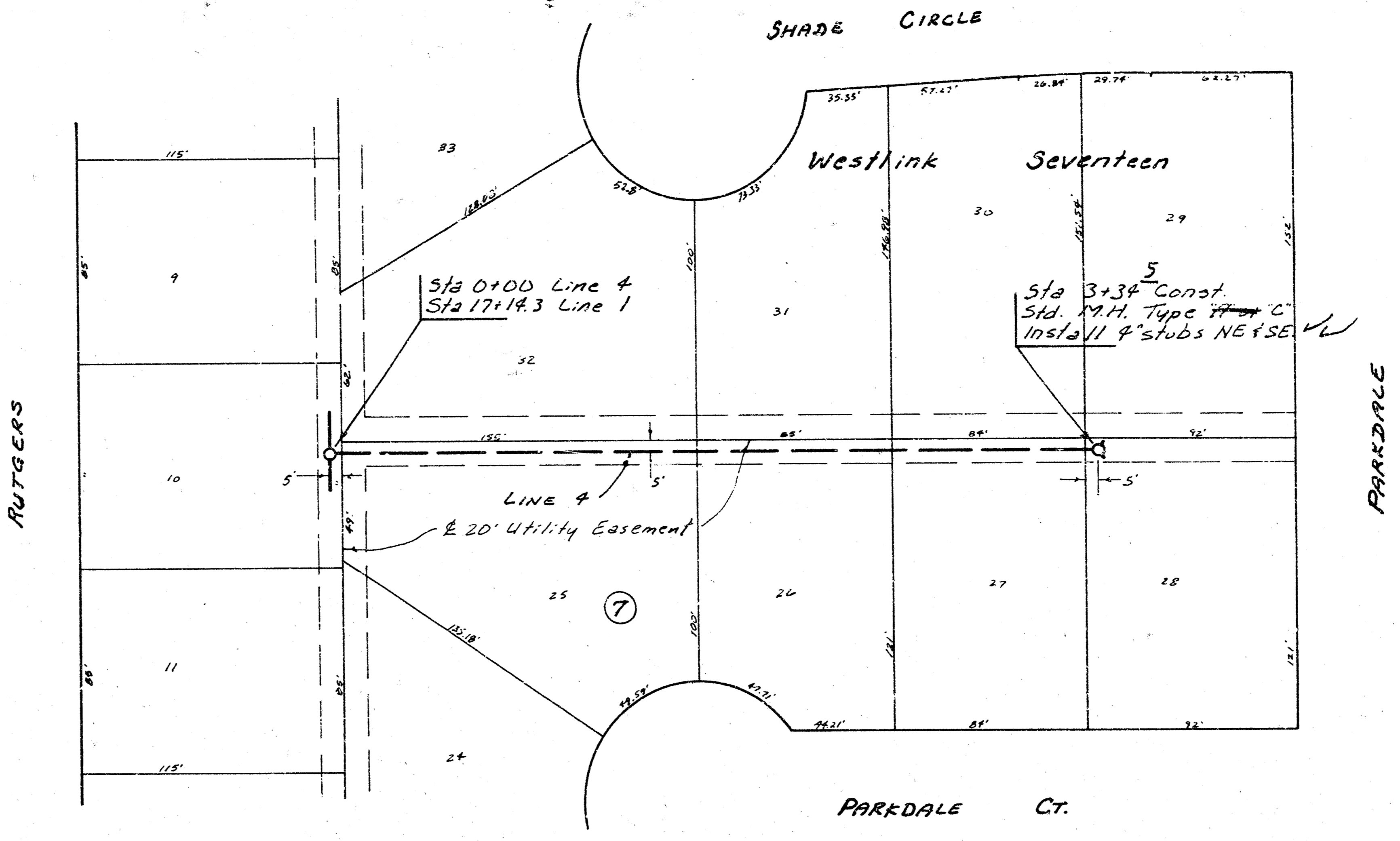
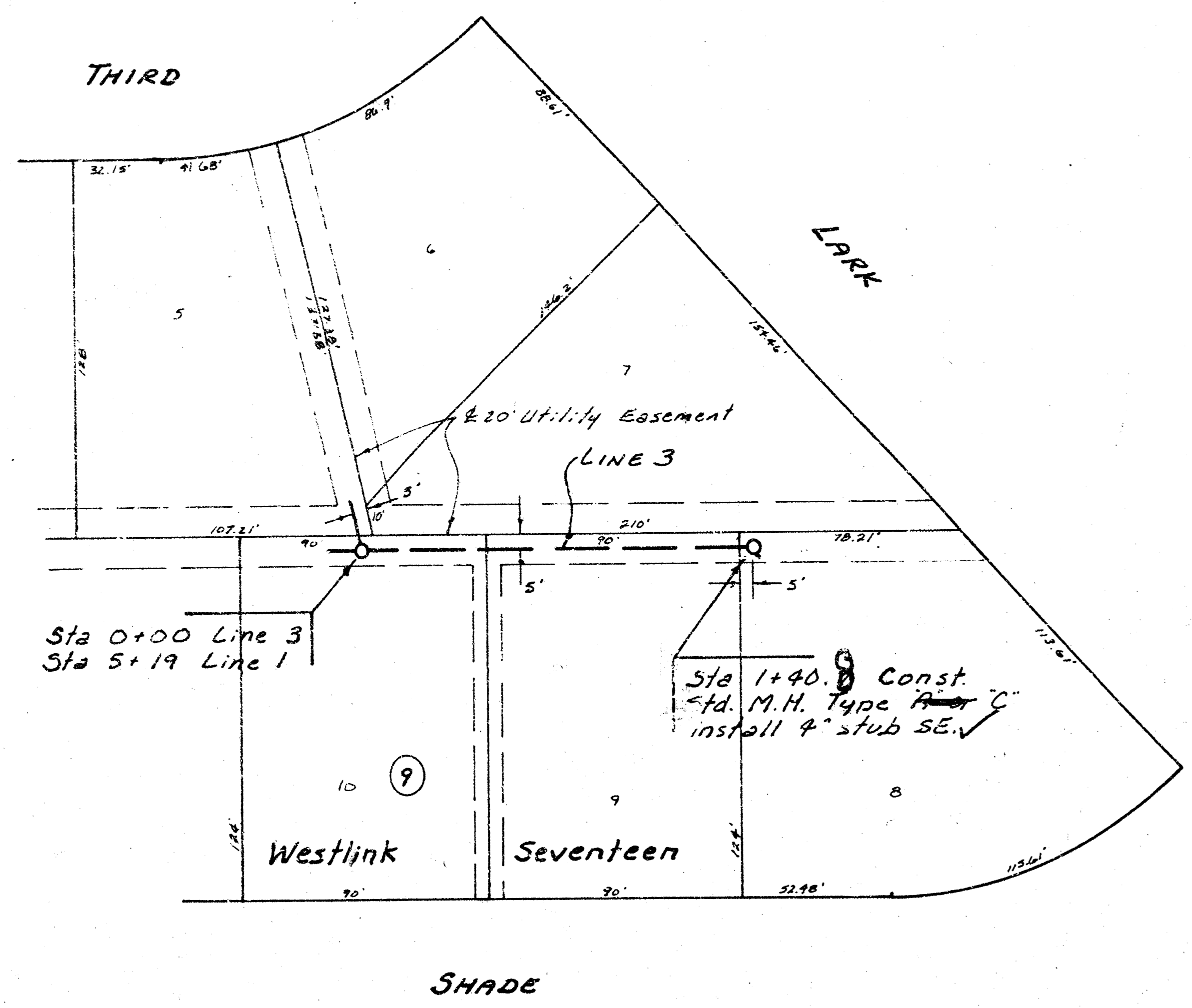
Scale Plan 1" = 40'
 Profile 1" = 40' Horiz.
 1" = 5' Vert.



Scale Plan 1" = 40'
 Profile 1" = 4' Horiz.
 1" = 5' Vert.



Scale Plan 1" = 40'
 Profile 1" = 40' Horiz.
 1" = 5' Vert.



Lot 1, 17 1/2 in 10, SW, Interceptor
 #68-16-245-80685-000-000-001

7/7