

**CAUTION**  
 UNDERGROUND UTILITIES  
 Please refer to utility maps and field notes for location of utilities.

Sta 0+00 Existing MH  
 Begin Const Connect to  
 8" Stub. Top MH Elev = 130.67  
 Adjust to Proposed Elev.  
 of 131.53

826  
 Sta 4+03.5 Const Std  
 MH, Type ~~A~~ C  
 Prop. Top MH Elev = 132.2

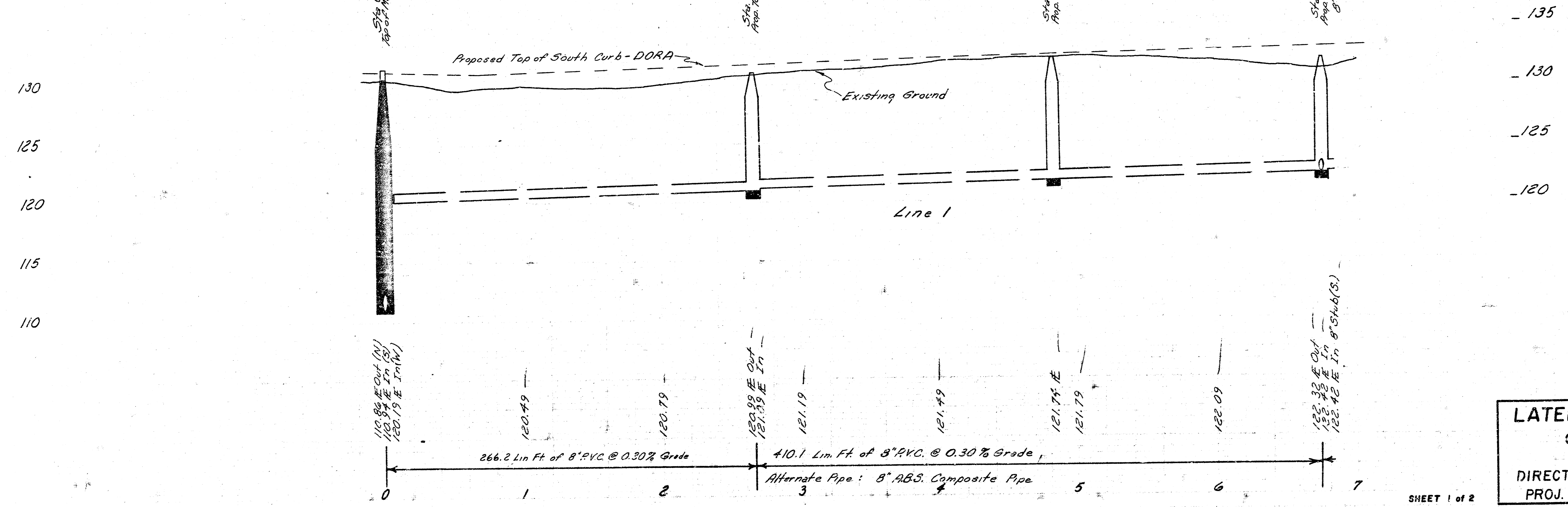
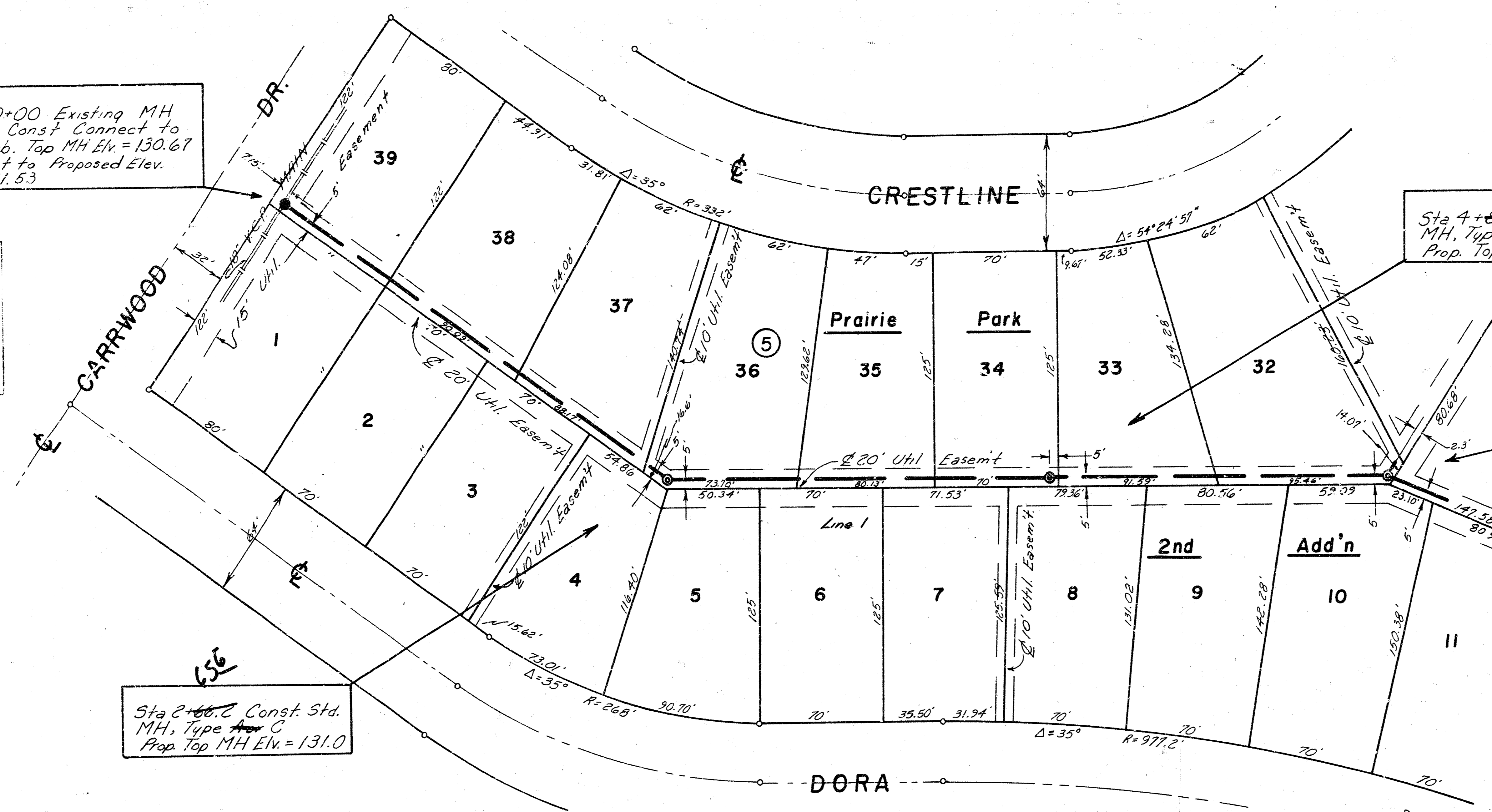
2  
 Sta 6+76.7 Const Std  
 MH Type ~~A~~ C  
 Install 8" Stub, 5  
 Prop. Top MH Elev = 132.0

656  
 Sta 2+66.2 Const. Std.  
 MH, Type ~~A~~ C  
 Prop. Top MH Elev = 131.0

**Bench Marks:**  
 131.32 - RR Spk on West Face  
 Elm Tree @ NE Cor. of  
 Prairie Park End Addn.  
 130.43 - "H" @ Base of Chain Lk. fence  
 post E.L. Carwood and Carr  
 130.81 - "D" @ Base of Chain Lk. fence approx.  
 15 ft. South of N.L. Esthiner and  
 E.L. Carwood  
 Estab. 130.67 - N. Rim S.S. MH. Located 7.15 ft. West  
 and 5.1 ft. South of NE. Cor. Lot 39, Blk 5,  
 Prairie Park 2nd Addn.

SCALE: 1" = 40' Plan  
 Horiz. 1" = 40' Profile  
 Vert. 1" = 5' Profile

THE CONTRACTOR SHALL BE RESPONSIBLE FOR PROTECTING ALL EXISTING UTILITIES. THE CONTRACTOR SHALL BE RESPONSIBLE FOR OBTAINING ALL NECESSARY PERMITS AND APPROVALS FROM THE CITY OF WICHITA, KANSAS. THE CONTRACTOR SHALL BE RESPONSIBLE FOR OBTAINING ALL NECESSARY PERMITS AND APPROVALS FROM THE CITY OF WICHITA, KANSAS.



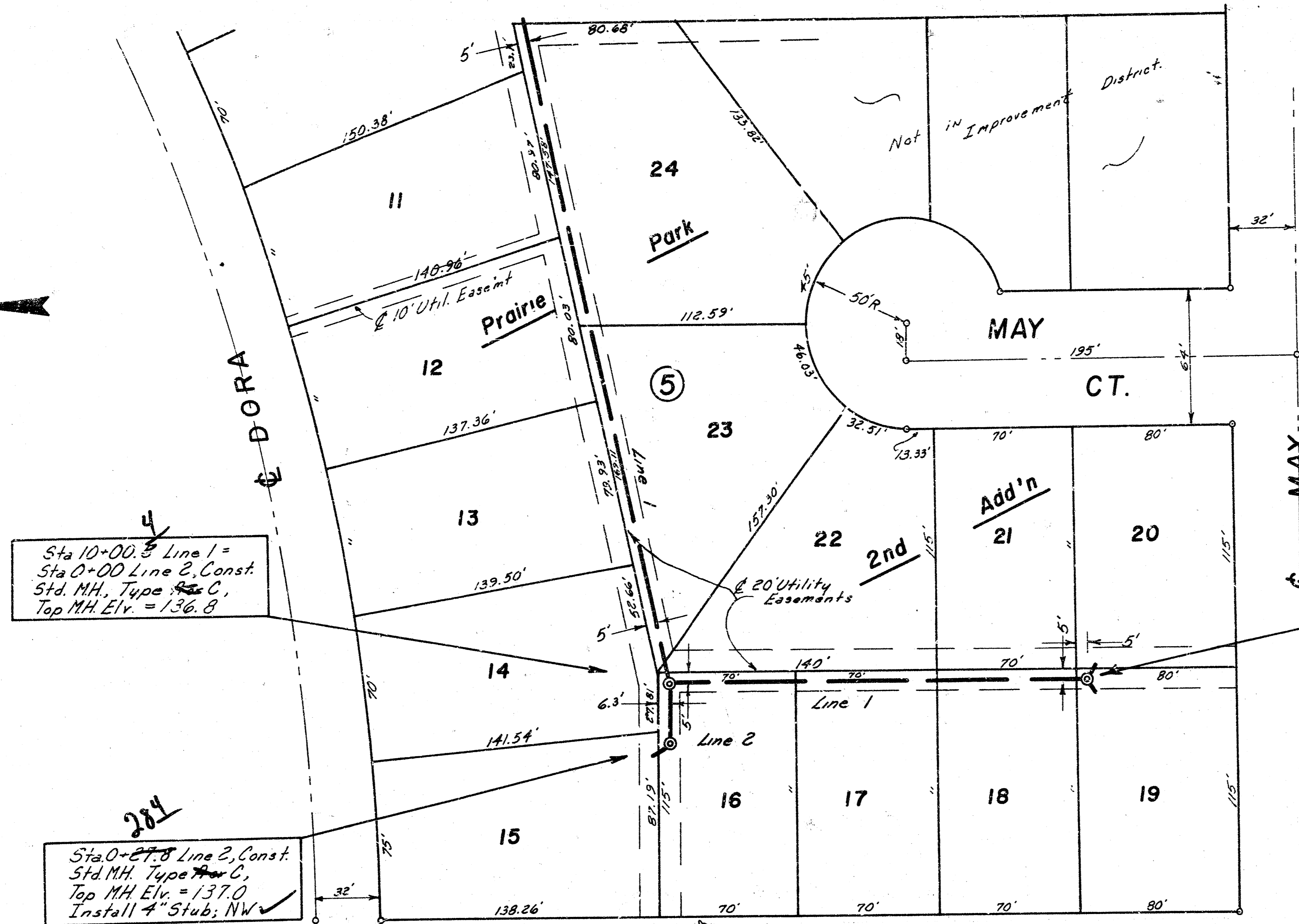
**LATERAL 4, MAIN II, S. W. I.**  
 CITY OF WICHITA, KANSAS  
 R.W. BRUGGEMAN  
 DIRECTOR OF ENGINEERING/CITY ENGINEER  
 PROJ. NO. 468-76-245 81093-000-000-001

As Built  
 11/81



SCALE: 1" = 40' Plan  
 Horiz. 1" = 40' Profile  
 Vert. 1" = 5'

THESE PLANS AND SPECIFICATIONS ARE PREPARED BY THE ENGINEER AND CONTRACTOR AND TO BE CONSIDERED AS SUCH. THE CONTRACTOR SHALL BE RESPONSIBLE FOR OBTAINING ALL NECESSARY PERMITS AND FOR THE PROTECTION OF ALL UTILITIES AND STRUCTURES. THE CONTRACTOR SHALL BE RESPONSIBLE FOR THE PROTECTION OF ALL UTILITIES AND STRUCTURES. THE CONTRACTOR SHALL BE RESPONSIBLE FOR THE PROTECTION OF ALL UTILITIES AND STRUCTURES.



Sta 10+00.5 Line 1 =  
 Sta 0+00 Line 2, Const.  
 Std. MH, Type C,  
 Top MH Elev. = 136.8

Sta 0+27.8 Line 2, Const.  
 Std. MH, Type C,  
 Top MH Elev. = 137.0  
 Install 4" Stub, NW

Sta 12+00.8 Const.  
 Std. MH, Type C,  
 Top MH Elev. = 136.3  
 Install 4" Stubs, SE, SW

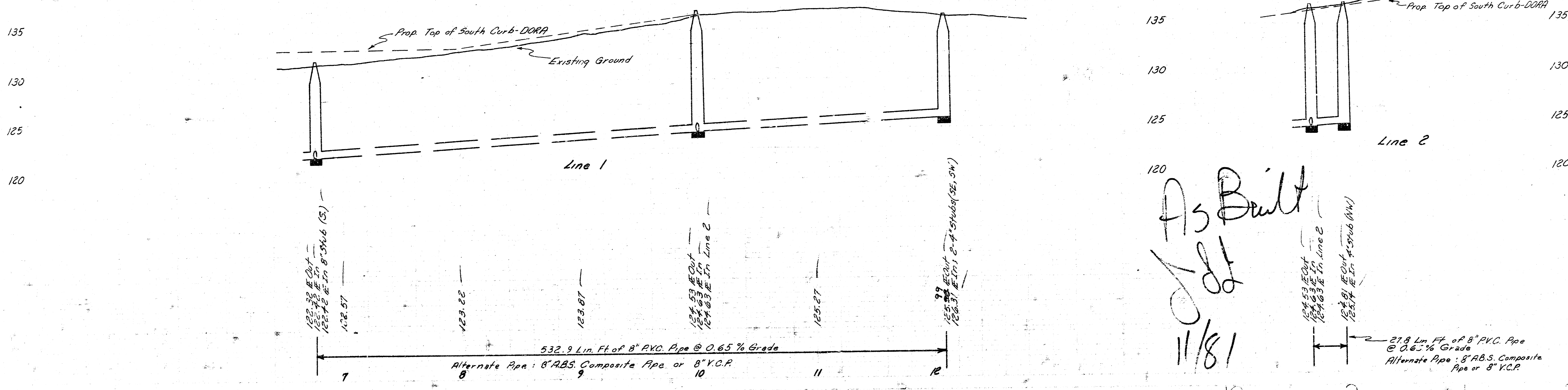
Sta 6+16.3  
 MH (See Sheet 1)

Sta 10+00.5 Line 1 =  
 Sta 0+00 Line 2  
 Prop. Top MH Elev. = 136.8

Sta 12+00.8  
 Prop. Top MH Elev. = 136.3  
 Install 4" Stubs, SE, SW

Sta 10+00.5 Line 2  
 Sta 0+00 Line 2

Sta 0+27.8 Line 2  
 Prop. Top MH Elev. = 137.0



As Built  
 11/81

27.8 Lin. Ft. of 8" PVC Pipe  
 @ 0.65% Grade  
 Alternate Pipe: 8" A.B.S. Composite  
 Pipe or 8" V.C.P.

B. Pender  
 J. Lindsey

B. Pender  
 J. Lindsey

B. Pender  
 J. Lindsey

C. W.