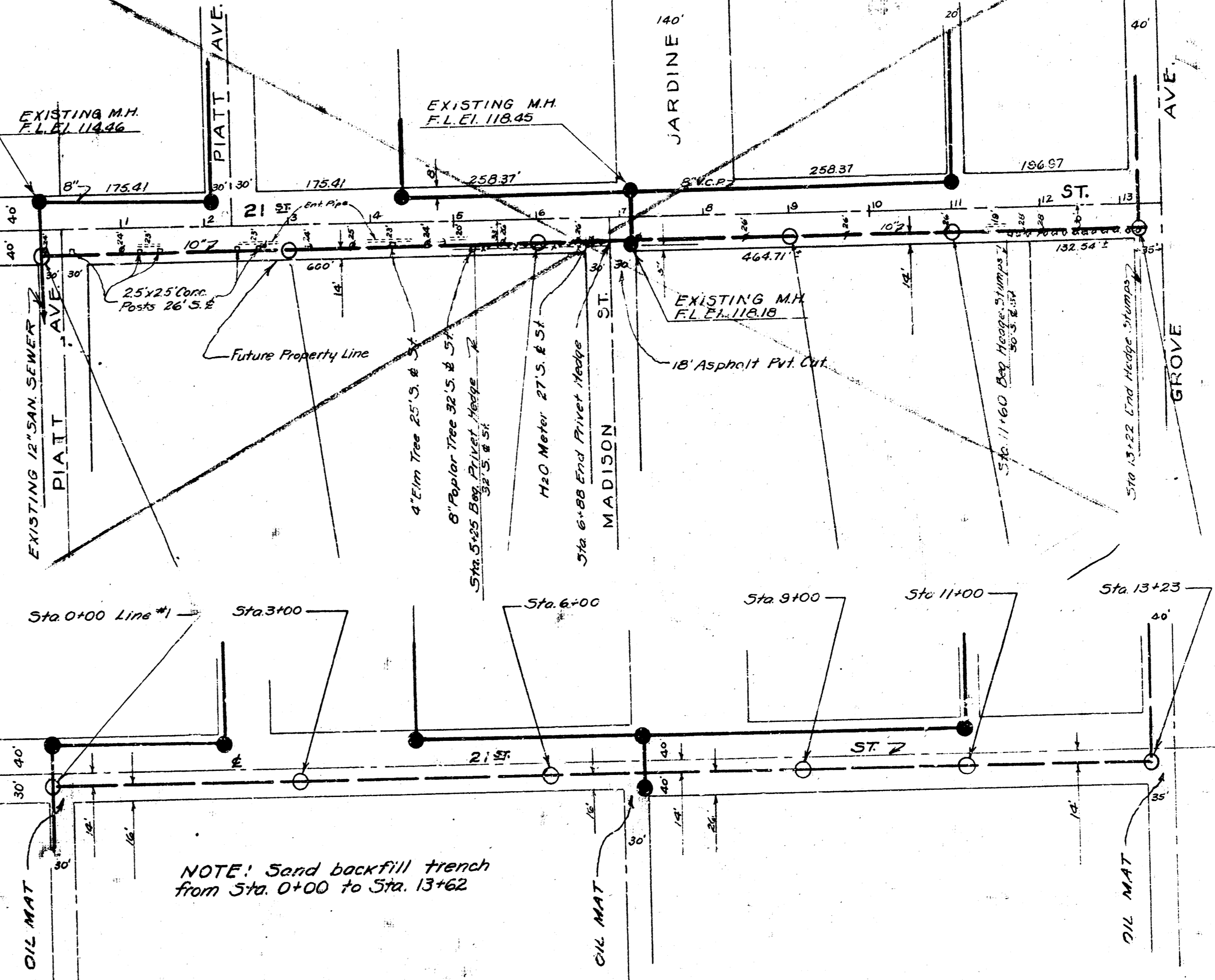


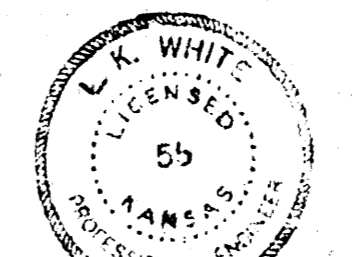
N
SCALE 1"=100'

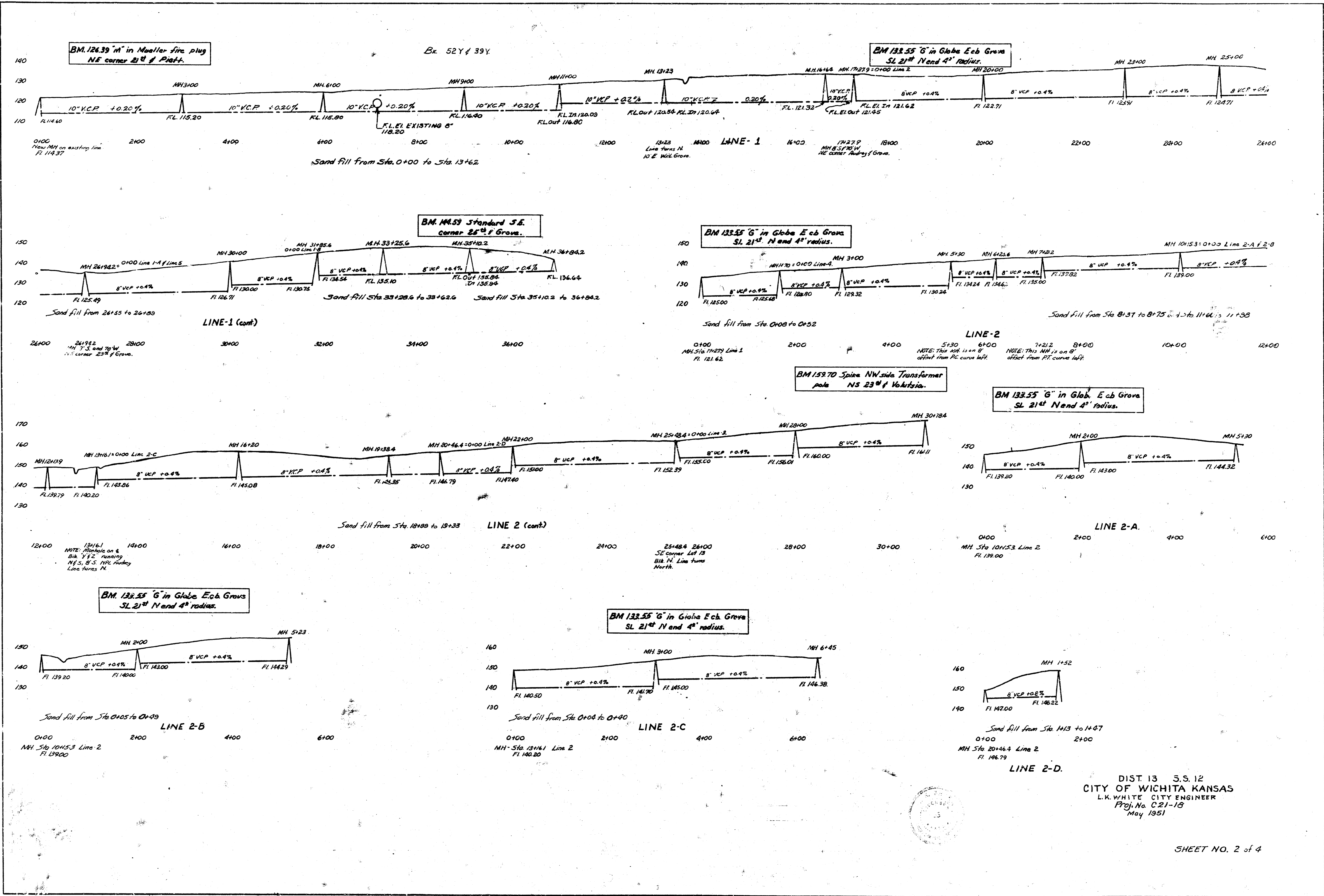


NOTE: Sand backfill trench from Sta. 0+00 to Sta. 13+62

NOTE: REAR YARD EASEMENTS 8' IN WIDTH SIDE 5' IN WIDTH ANCHOR 10' MIN. BUILDING LINE AS PER ZONING ORD. OF WICHITA, KANSAS.

DIST. 13 S.S. 12
CITY OF WICHITA KANSAS
L.K. WHITE CITY ENGINEER
Proj. No. C-21-18
May 1951





BM 126.39 " in Mueller fire plug
NE corner 2nd of Platt.

Br. 52Y of 39Y

BM 122.55 " in Globe Eek Grove
SL 21st N and 4th radius.

BM 145.53 Standard 3.6
corner 25th of Grove.

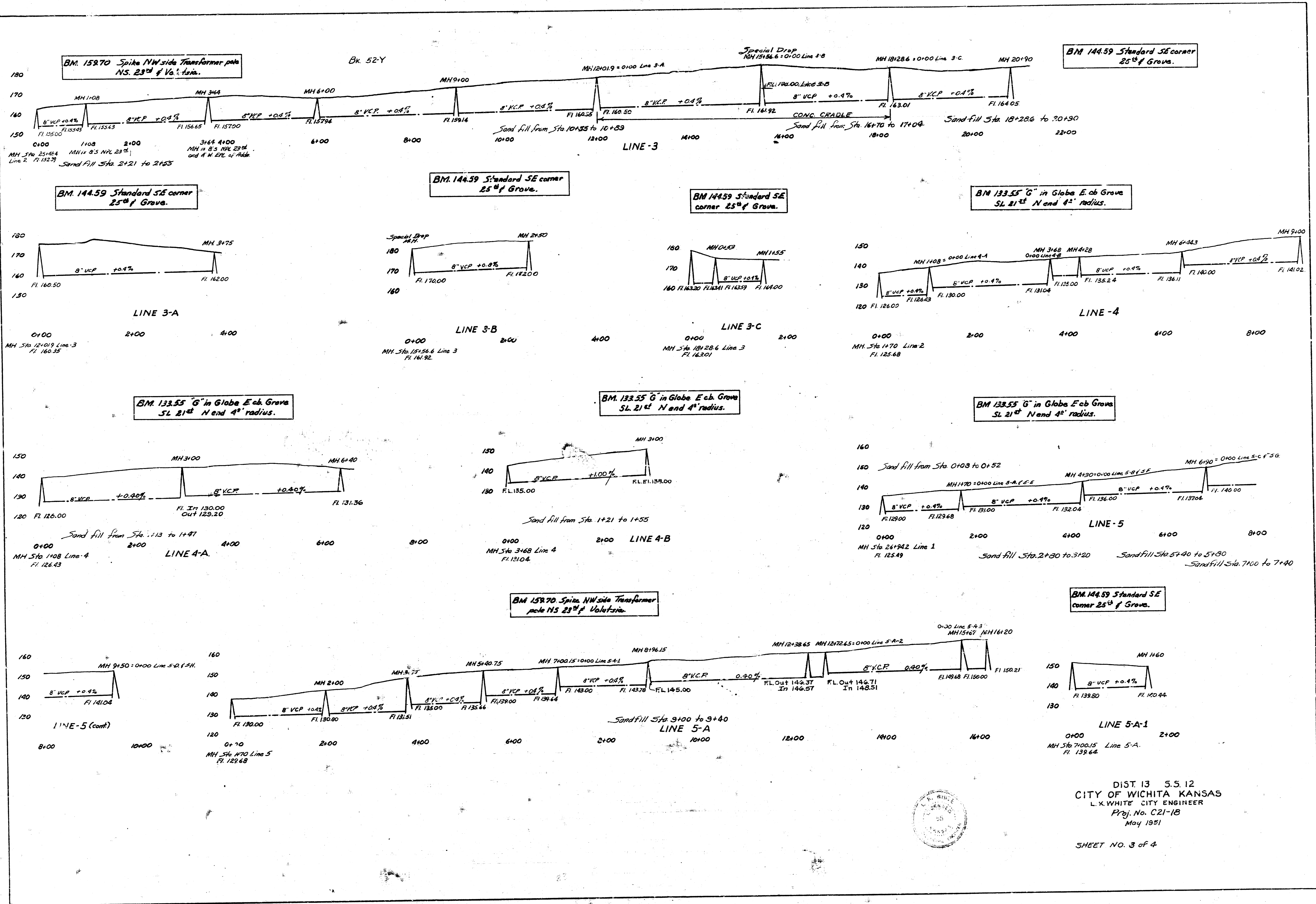
BM 122.55 " in Globe Eek Grove
SL 21st N and 4th radius.

BM 122.55 " in Globe Eek Grove
SL 21st N and 4th radius.

BM 122.55 " in Globe Eek Grove
SL 21st N and 4th radius.

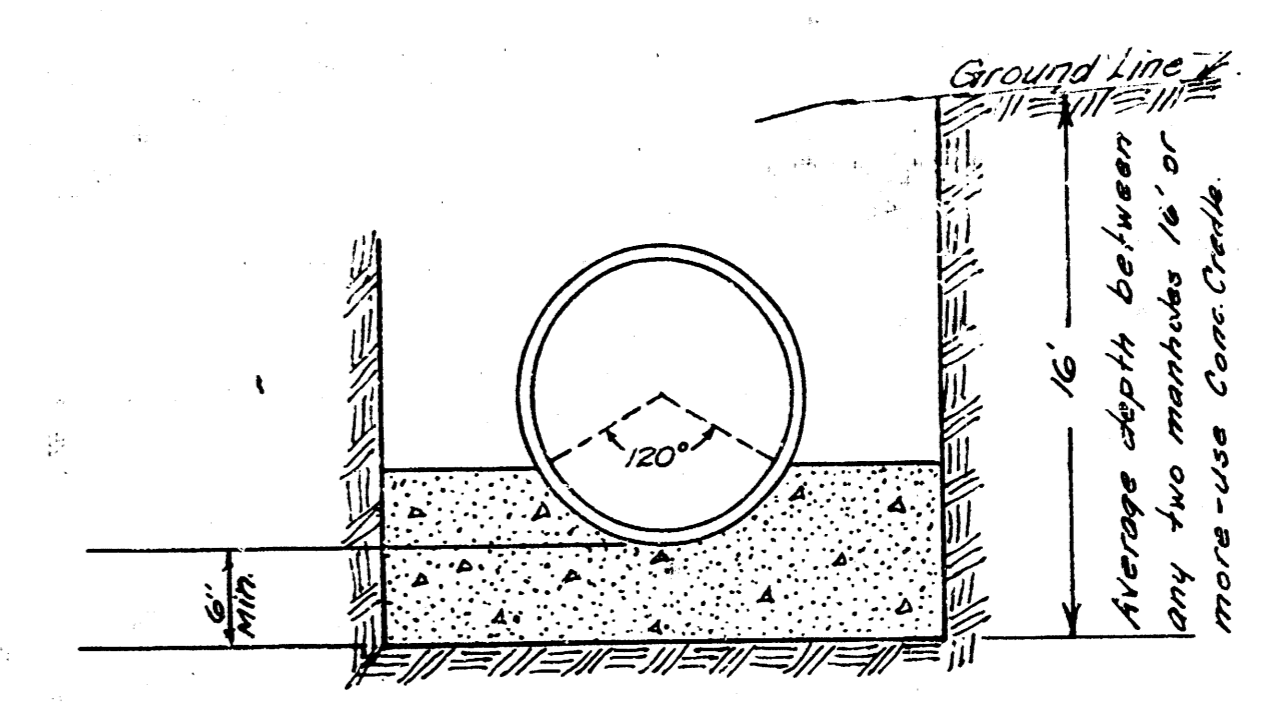
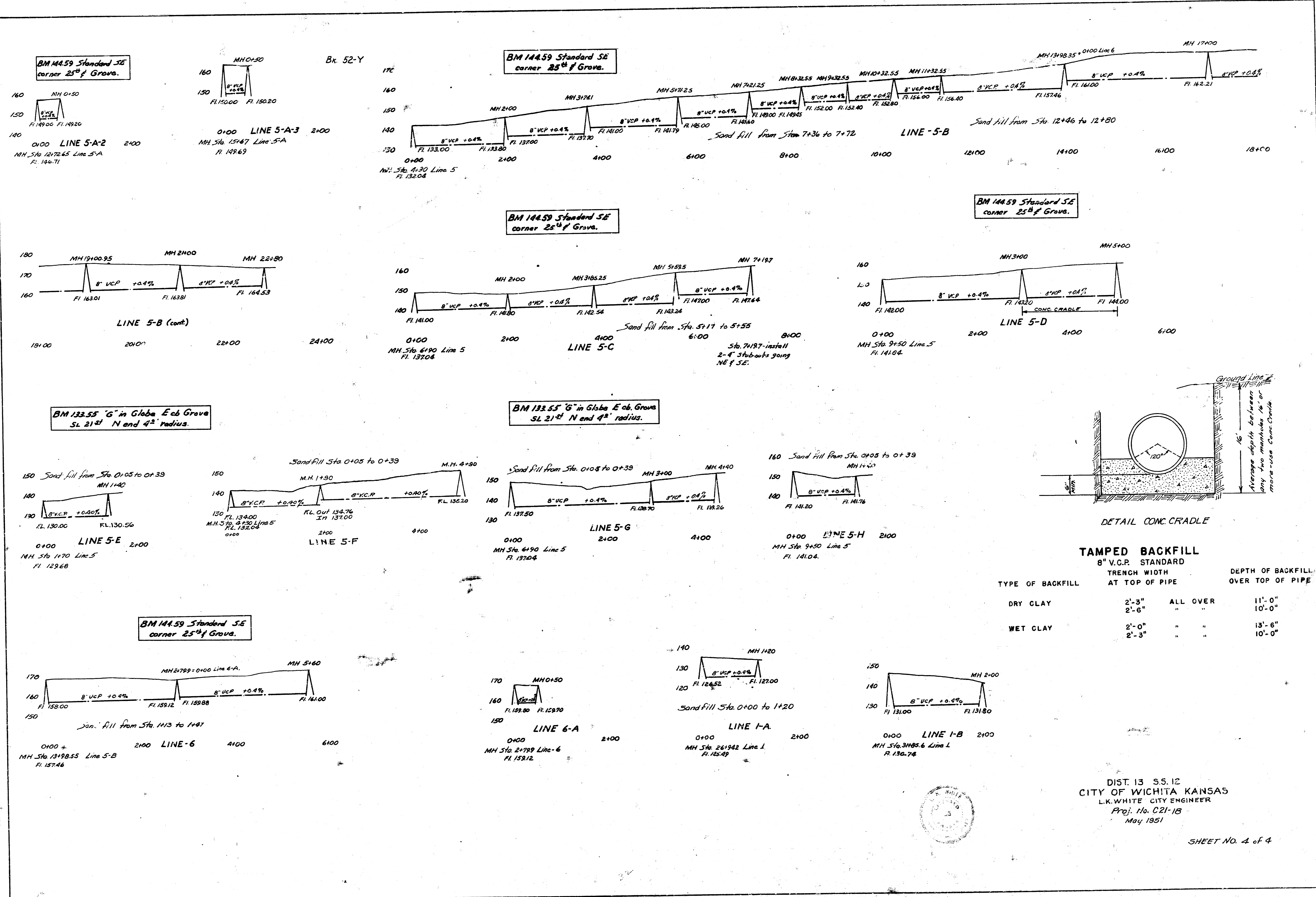
BM 122.55 " in Globe Eek Grove
SL 21st N and 4th radius.

DIST 13 S.S. 12
CITY OF WICHITA KANSAS
L.K. WHITE CITY ENGINEER
Proj. No. C-21-18
May 1951



DIST 13 S.S. 12
 CITY OF WICHITA KANSAS
 L. X. WHITE, CITY ENGINEER
 Proj. No. C21-18
 May 1951

SHEET NO. 3 of 4



TAMPED BACKFILL
8" V.C.R. STANDARD

TYPE OF BACKFILL	TRENCH WIDTH AT TOP OF PIPE	DEPTH OF BACKFILL OVER TOP OF PIPE
DRY CLAY	2'-3"	ALL OVER
	2'-6"	10'-0"
WET CLAY	2'-0"	13'-6"
	2'-3"	10'-0"

DIST. 13 S.S. 12
CITY OF WICHITA KANSAS
L.K. WHITE CITY ENGINEER
Proj. No. C21-18
May 1951